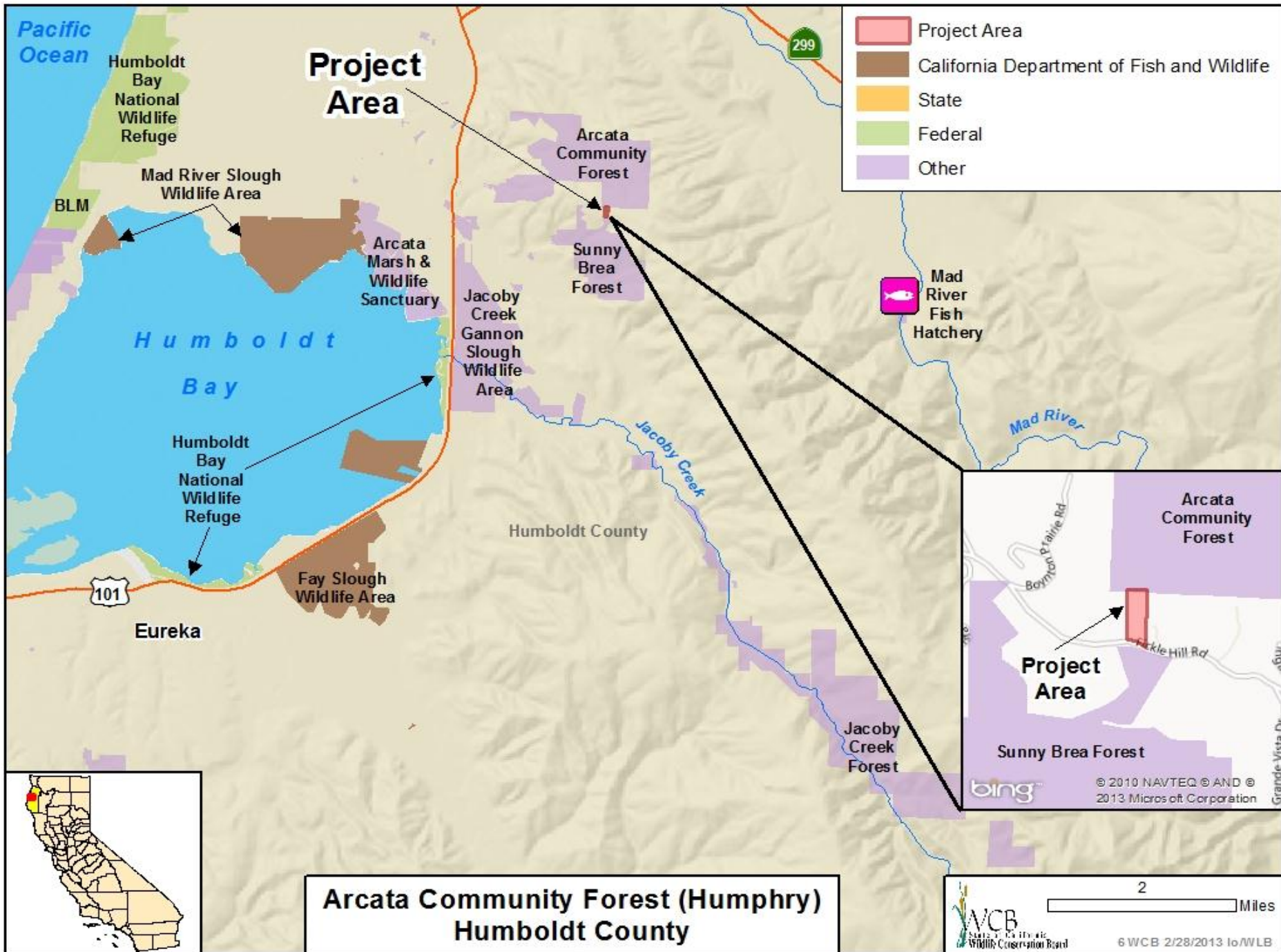


**March 11, 2013**  
**Wildlife Conservation Board Meeting**  
**1:00 PM, State Capitol, Room 112**  
**Sacramento, California 95814**





- Project Area
- California Department of Fish and Wildlife
- State
- Federal
- Other

# Project Area

## Arcata Community Forest (Humphry) Humboldt County

2 Miles

WCB  
 Humboldt County Wildlife Conservation Board  
 6 WCB 2/28/2013 to/WLB

Project Area

Sunny Brea Forest

Arcata Community Forest

© 2010 NAVTEQ © AND ©  
2013 Microsoft Corporation



Pacific Ocean

Humboldt Bay National Wildlife Refuge

Mad River Slough Wildlife Area

BLM

Humboldt Bay

Humboldt Bay National Wildlife Refuge

Eureka

101

Arcata Community Forest

Sunny Brea Forest

Jacoby Creek Gannon Slough Wildlife Area

Jacoby Creek Forest

Humboldt County

Jacoby Creek

Mad River

Mad River Fish Hatchery

Arcata Marsh & Wildlife Sanctuary

Fay Slough Wildlife Area

299



#6. Arcata Community Forest (Humphry)  
Humboldt County



- Looking south from the rear portion of the property towards Fickle Hill Road

## #6. Arcata Community Forest (Humphry) Humboldt County

---



- Looking southeast from the rear portion of the property towards Fickle Hill Road



#6. Arcata Community Forest (Humphry)  
Humboldt County

---



- Looking east from the property line.



## #6. Arcata Community Forest (Humphry) Humboldt County



Photo courtesy of Mark Andre, City of Arcata

- Pacific fisher spotted January 2013 just south of the proposed acquisition in the Jacoby Creek Forest



## #6. Arcata Community Forest (Humphry) Humboldt County

- Northern spotted owl seen north of the proposed acquisition in the Arcata Community Forest



Photo courtesy of Mark Andre, City of Arcata

#6. Arcata Community Forest (Humphry)  
Humboldt County

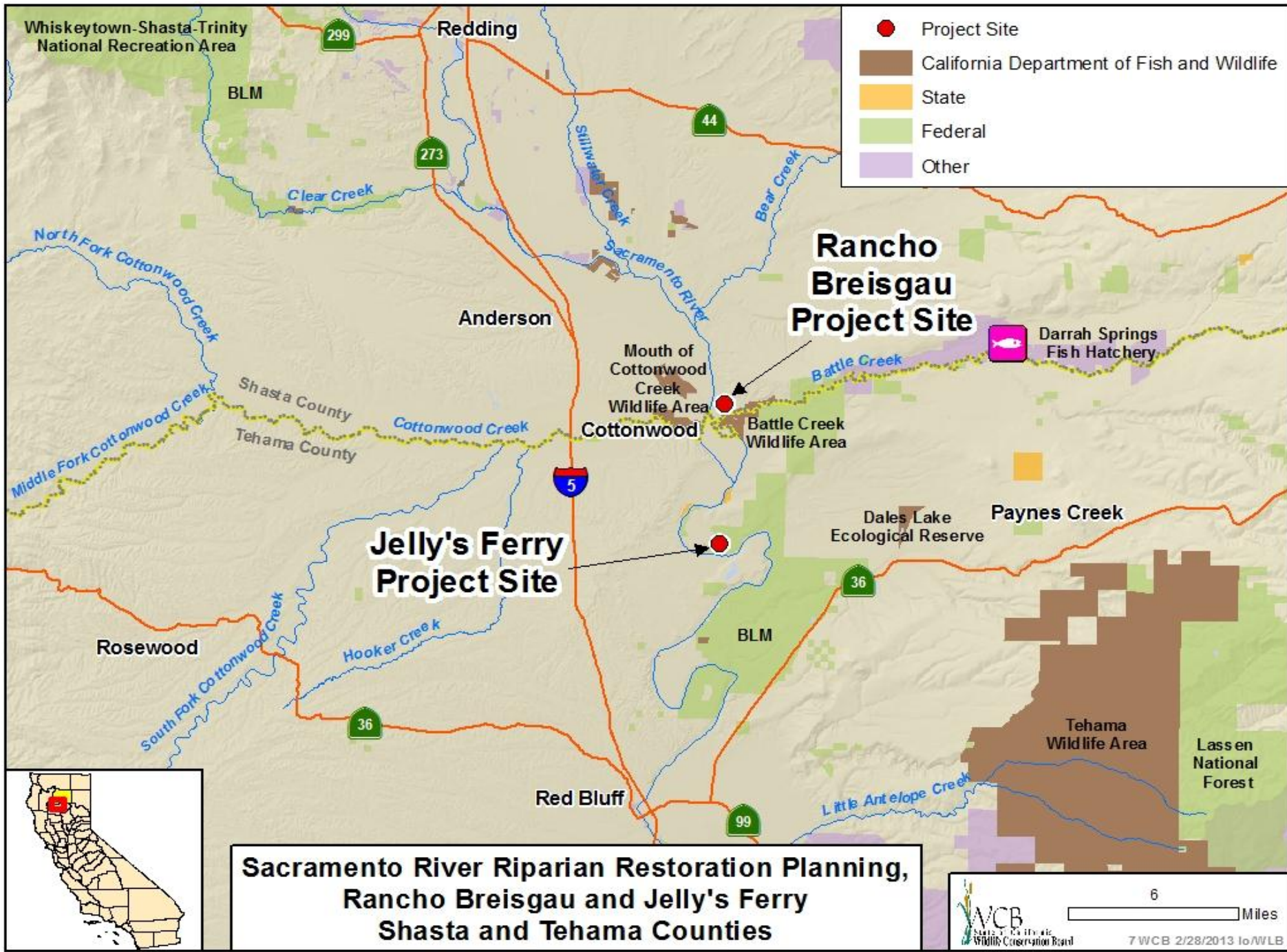
---



Photo courtesy of Mark Andre, City of Arcata

- Del Norte salamander seen north of the proposed acquisition in the Arcata Community Forest





**Sacramento River Riparian Restoration Planning,  
Rancho Breisgau and Jelly's Ferry  
Shasta and Tehama Counties**

#7. Sacramento River Riparian Restoration Planning,  
Rancho Breisgau and Jelly's Ferry  
Shasta and Tehama Counties

---



- Andrew Jelly settled at the Jelly's Ferry site in approximately 1850. The project site was cleared and farmed over 150 years ago. Photo 4 shows the former agricultural field with Mt. Lassen in the background.



## #7. Sacramento River Riparian Restoration Planning, Rancho Breisgau and Jelly's Ferry Shasta and Tehama Counties



- The loam soils at Jelly's Ferry will support restoration of oak woodland savannah, oak grasslands, and Valley oak woodlands. A small linear area (about two acres) on right shows lower topography that floods during high water events on the Sacramento River.

#7. Sacramento River Riparian Restoration Planning,  
Rancho Breisgau and Jelly's Ferry  
Shasta and Tehama Counties



- Grain field at Rancho Breisgau to be restored to riparian forest.

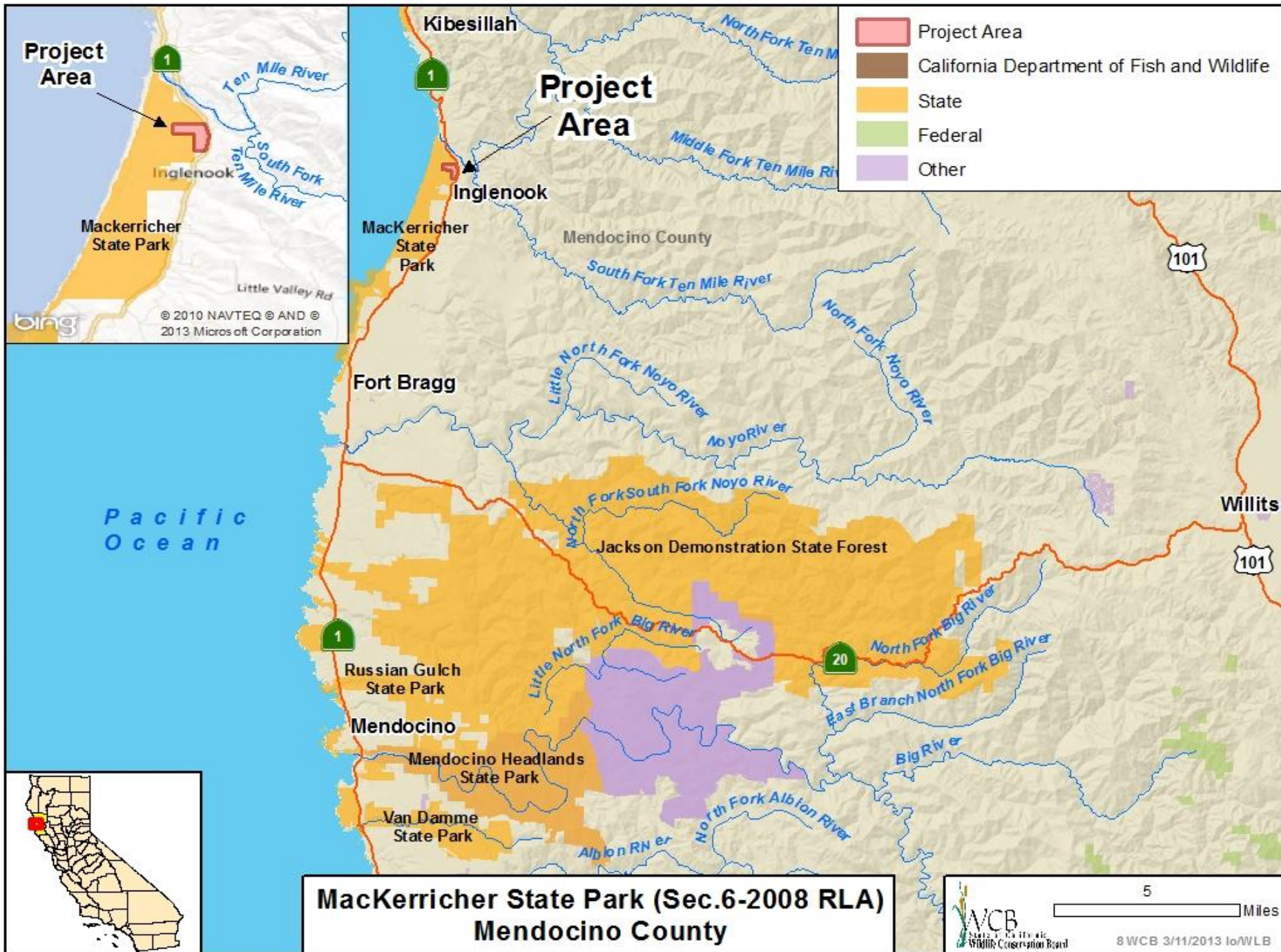


#7. Sacramento River Riparian Restoration Planning,  
Rancho Breisgau and Jelly's Ferry  
Shasta and Tehama Counties

---



- Remnant riparian vegetation exists along the Rancho Breisgau's perimeter which can be seen in the distance.





#8. MacKerrincher State Park (Sec. 6-2008 RLA)  
Mendocino County



- Property is located just south of the Highway One bridge over Ten Mile River

#8. MacKerrincher State Park (Sec. 6-2008 RLA)  
Mendocino County

---



- The property has undulating hillsides and has excellent westerly facing views that overlook the MacKerrincher State Park sand dunes and the Pacific Ocean.



## #8. MacKerrincher State Park (Sec. 6-2008 RLA) Mendocino County

### Project Description

Restore ecosystem processes that are crucial to the viability of endangered species and their habitats in the Inglenook Fen-Ten Mile Dunes Natural Preserve by:

- Removing non-native plants, including European beachgrass and iceplant using hand labor.
- Reestablishing native plants, including endangered species, by seeding, transplanting, or installation of cuttings.



Western Snowy Plover



Menzies' Wallflower



Howell's Spineflower

- Slide courtesy of Department of Fish and Wildlife – Northern Region

## #8. MacKerrincher State Park (Sec. 6-2008 RLA) Mendocino County

---



- Non-native grasses will need to be removed to enable native species to recover.

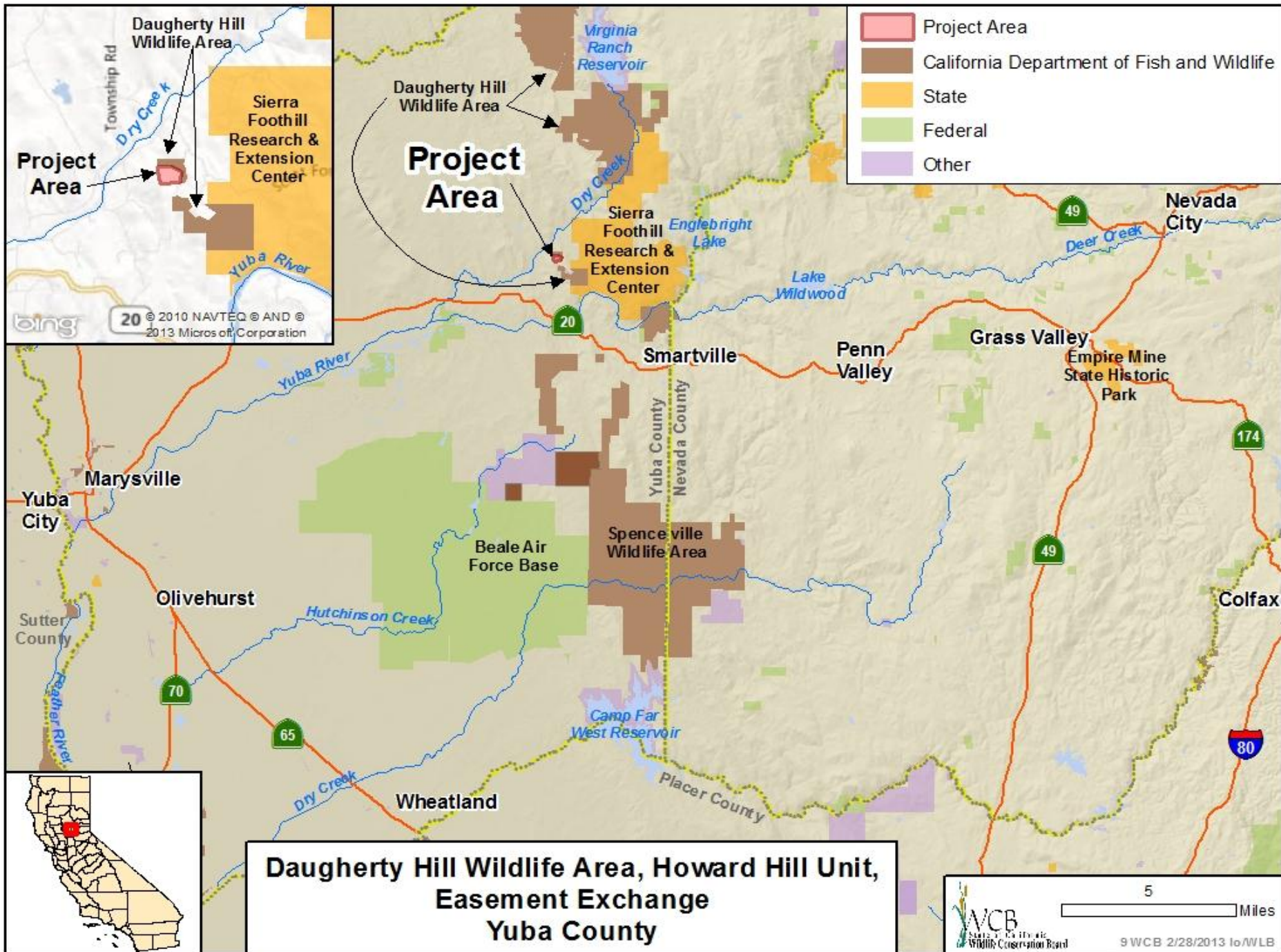


#8. MacKerrincher State Park (Sec. 6-2008 RLA)  
Mendocino County

---



- Slide courtesy of Department of Fish and Wildlife – Northern Region



**Daugherty Hill Wildlife Area, Howard Hill Unit,  
Easement Exchange  
Yuba County**



#9. Daugherty Hill Wildlife Area, Howard Hill Unit,  
Easement Exchange  
Yuba County



- Access point to CDFW property (Easement C & D)



#9. Daugherty Hill Wildlife Area, Howard Hill Unit,  
Easement Exchange  
Yuba County



- Road and Utilities on CDFW Property (Easement B)



#9. Daugherty Hill Wildlife Area, Howard Hill Unit,  
Easement Exchange  
Yuba County



- Excessive slope at current across point to CDFW property



#9. Daugherty Hill Wildlife Area, Howard Hill Unit,  
Easement Exchange  
Yuba County



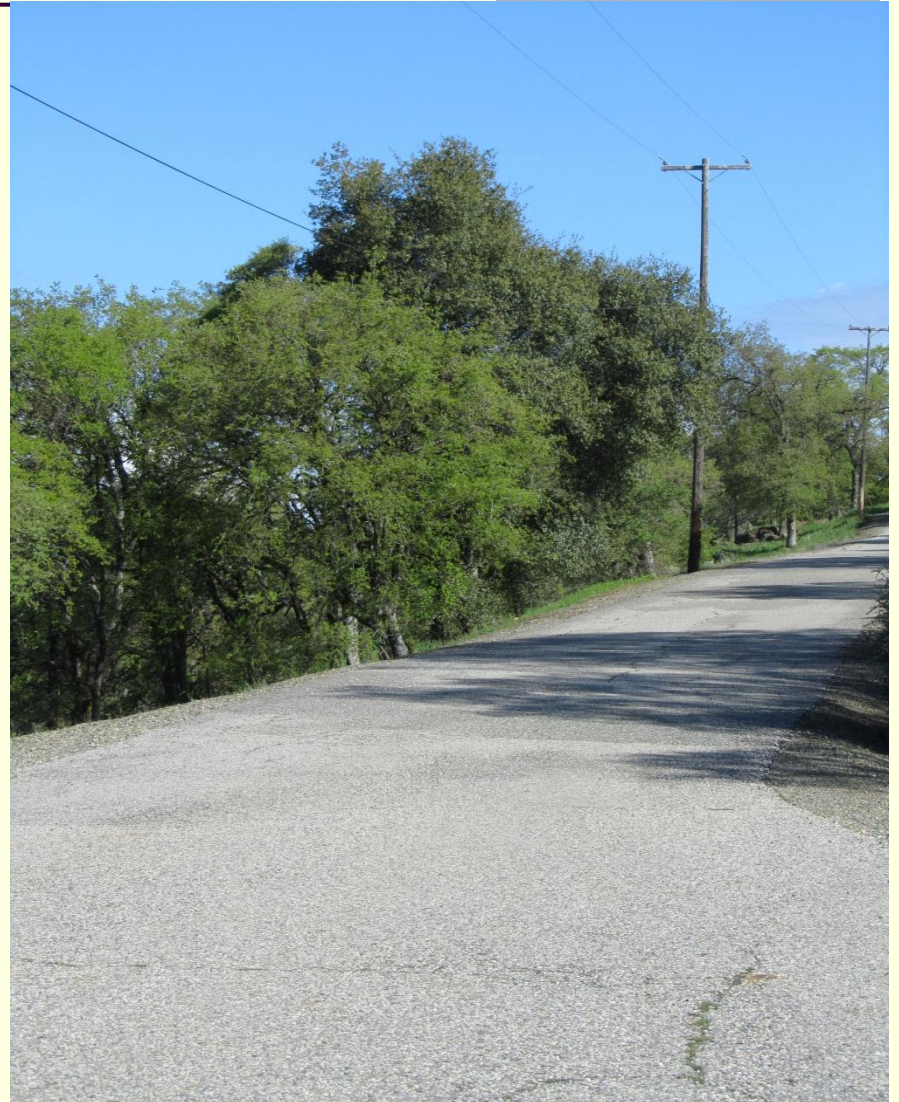
- Visual of extent of slope at existing CDFW access point

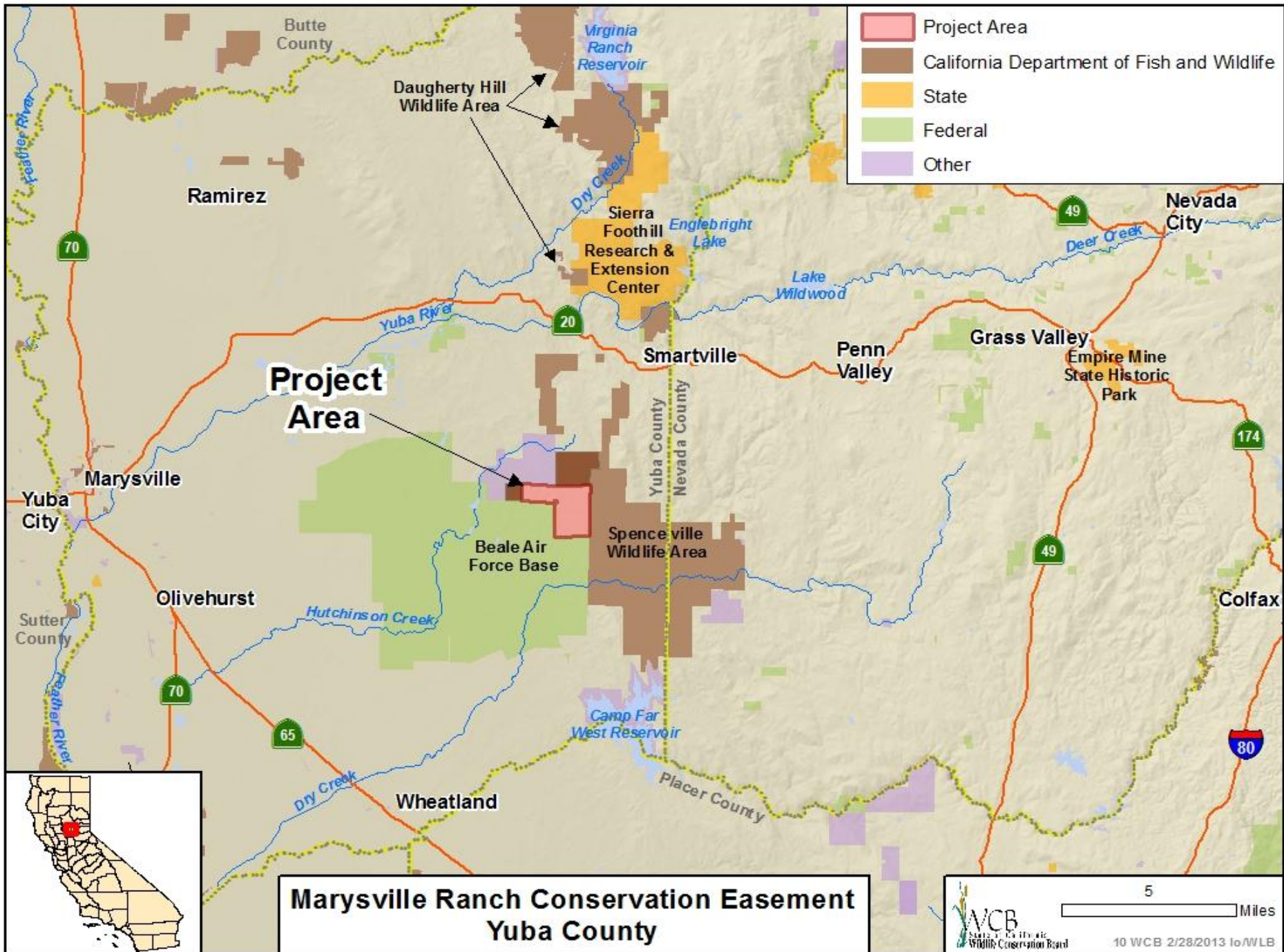


#9. Daugherty Hill Wildlife Area, Howard Hill Unit,  
Easement Exchange  
Yuba County

---

- Looking back on CDFW property, current access point to the left





**Marysville Ranch Conservation Easement  
Yuba County**



## #10. Marysville Ranch Conservation Easement Yuba County



Photo Courtesy of the Trust for Public Land

- View of the property's bedrock and mortars

## #10. Marysville Ranch Conservation Easement Yuba County



Photo Courtesy of the Trust for Public Land

- View of distant oaks in the background and bedrock mortar in the foreground



## #10. Marysville Ranch Conservation Easement Yuba County



Photo Courtesy of the Trust for Public Land

- View of oak trees in the background and bedrock mortar in the foreground

## #10. Marysville Ranch Conservation Easement Yuba County



Photo Courtesy of the Trust for Public Land

- View of the headwaters on the property



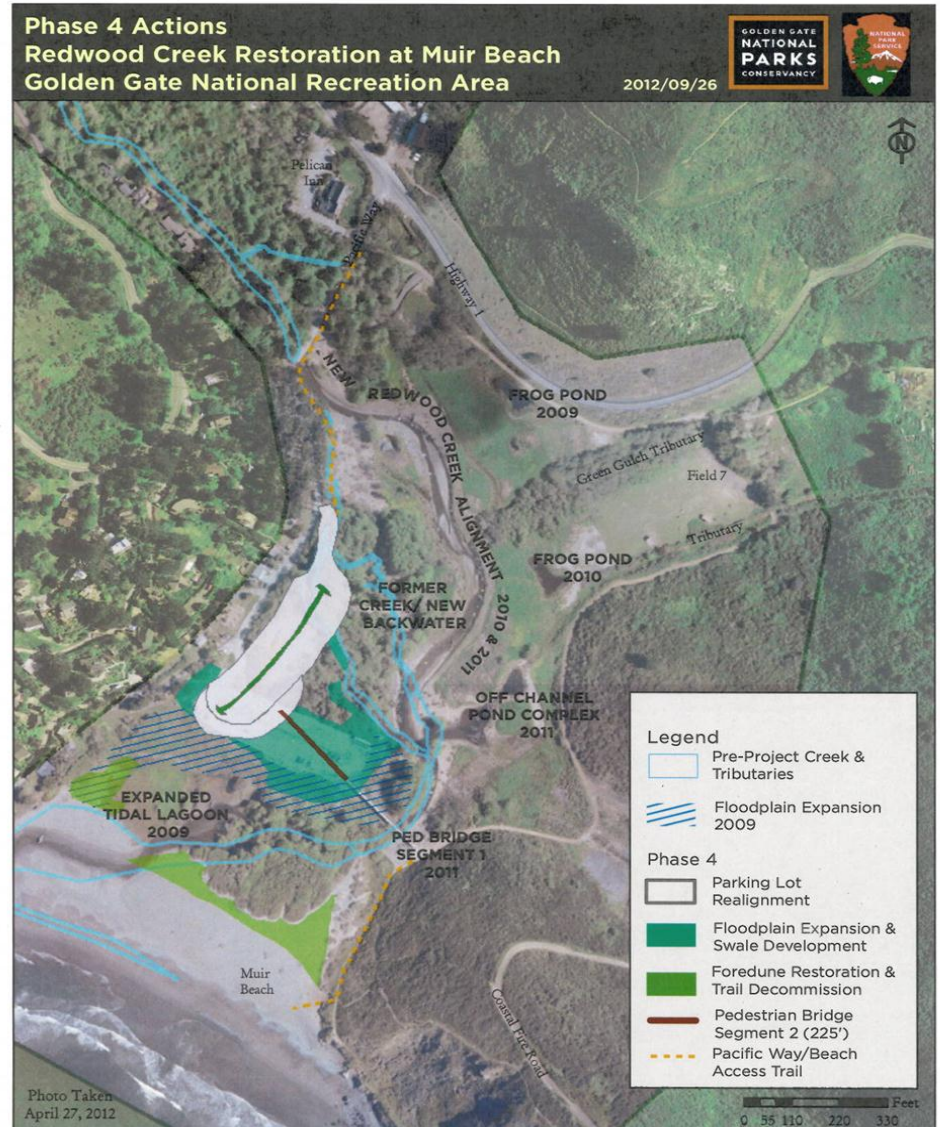


- Project Area
- California Department of Fish and Wildlife
- State
- Federal
- Other

**Lower Redwood Creek Restoration, Phase II  
Marin County**

# #11. Lower Redwood Creek Restoration, Phase II Marin County

- Aerial view of project area





# #11. Lower Redwood Creek Restoration, Phase II Marin County



- View of the project area from adjacent hillside, looking northeast

# #11. Lower Redwood Creek Restoration, Phase II Marin County



- Current parking lot, to be relocated



## #11. Lower Redwood Creek Restoration, Phase II Marin County



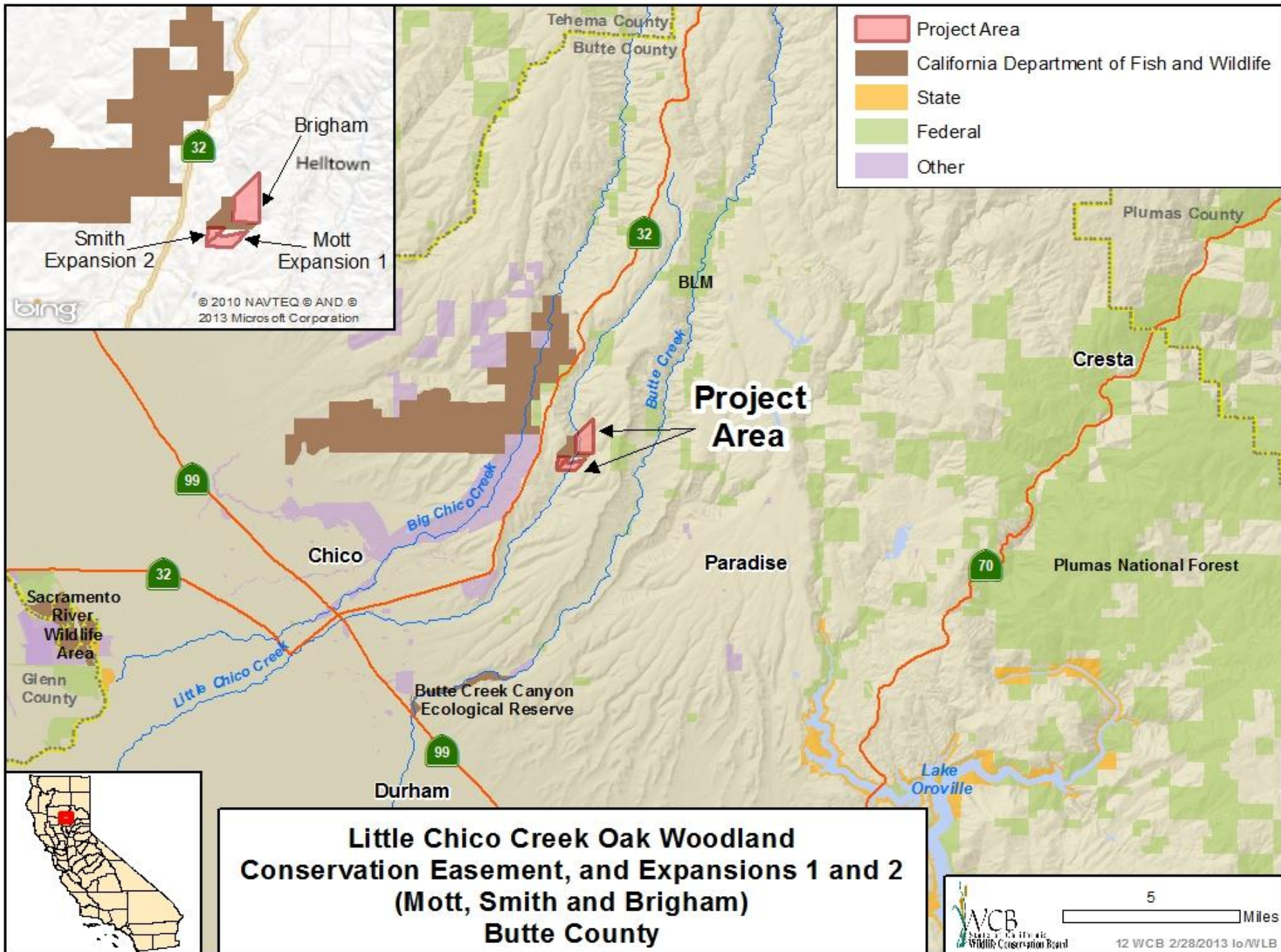
- Boardwalk leading to the parking lot from the beach, will be extended to new parking lot location

# #11. Lower Redwood Creek Restoration, Phase II Marin County



- View of Redwood Creek restored in 2011-2012





#12. Little Chico Creek Oak Woodland Conservation Easement, and Expansions 1 and 2 (Mott, Smith and Brigham), Butte County



- Little Chico Creek (Brigham property)



#12. Little Chico Creek Oak Woodland Conservation Easement, and Expansions 1 and 2 (Mott, Smith and Brigham), Butte County

---



- Blue Oak Woodlands (Brigham property)

#12. Little Chico Creek Oak Woodland Conservation Easement, and Expansions 1 and 2 (Mott, Smith and Brigham), Butte County

---



- Blue Oak Woodlands (Mott property)



#12. Little Chico Creek Oak Woodland Conservation Easement, and Expansions 1 and 2 (Mott, Smith and Brigham), Butte County



- Little Chico Creek ( Mott property)

#12. Little Chico Creek Oak Woodland Conservation Easement, and Expansions 1 and 2 (Mott, Smith and Brigham), Butte County

---



- Blue Oak Woodlands (Smith property)



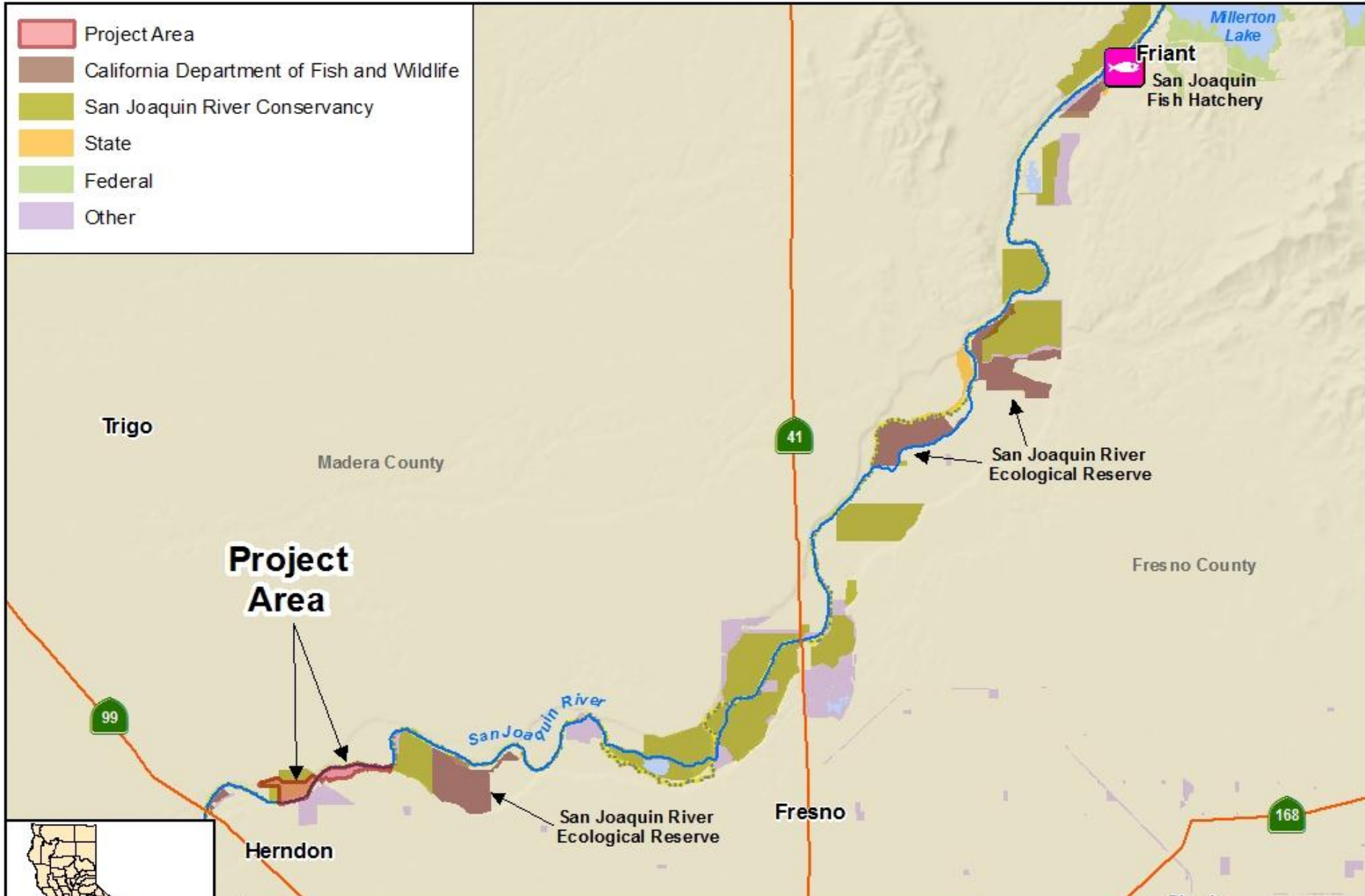
#12. Little Chico Creek Oak Woodland Conservation Easement, and Expansions 1 and 2 (Mott, Smith and Brigham), Butte County

---



- Blue Oak Woodland (Smith property)

- Project Area
- California Department of Fish and Wildlife
- San Joaquin River Conservancy
- State
- Federal
- Other



**Project Area**

**San Joaquin River Parkway, Riverbottom Park and Schneider Property Habitat Restoration  
Madera and Fresno Counties**

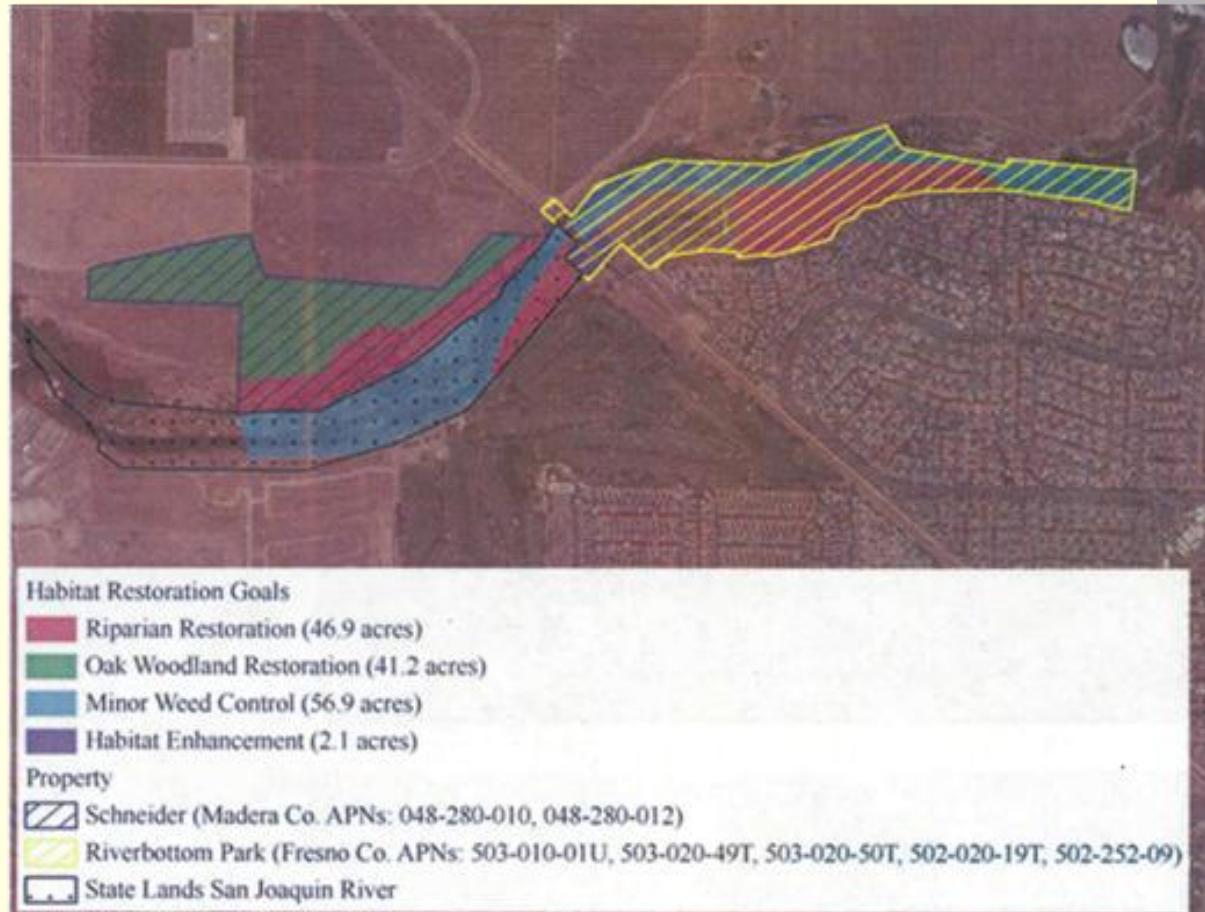


2 Miles

13 WCB 2/28/2013 lo/WLB



# #13. San Joaquin River Parkway, Riverbottom Park and Schneider Property Habitat Restoration Madera and Fresno Counties



- Aerial view of project area

#13. San Joaquin River Parkway, Riverbottom Park and  
Schneider Property Habitat Restoration  
Madera and Fresno Counties

---



- Eucalyptus tree on the Schneider Property



#13. San Joaquin River Parkway, Riverbottom Park and  
Schneider Property Habitat Restoration  
Madera and Fresno Counties



- Burlington Northern Santa Fe railroad crossing Riverbottom Park

# #13. San Joaquin River Parkway, Riverbottom Park and Schneider Property Habitat Restoration Madera and Fresno Counties



- View of San Joaquin River with the Schneider property on the left and State Lands Commission land on the right. Rail crossing is in the distance.



● Project Site

■ California Department of Fish and Wildlife

■ San Joaquin River Conservancy

■ State

■ Federal

■ Other

**Project Site**

**Friant**  
San Joaquin Fish Hatchery

San Joaquin River Ecological Reserve

Fresno County

Trigo

Madera County

41

99

San Joaquin River

Fresno

168

Herndon

San Joaquin River Ecological Reserve

Clovis

**San Joaquin River Parkway,  
Lost Lake Park Campground Improvements  
Fresno County**



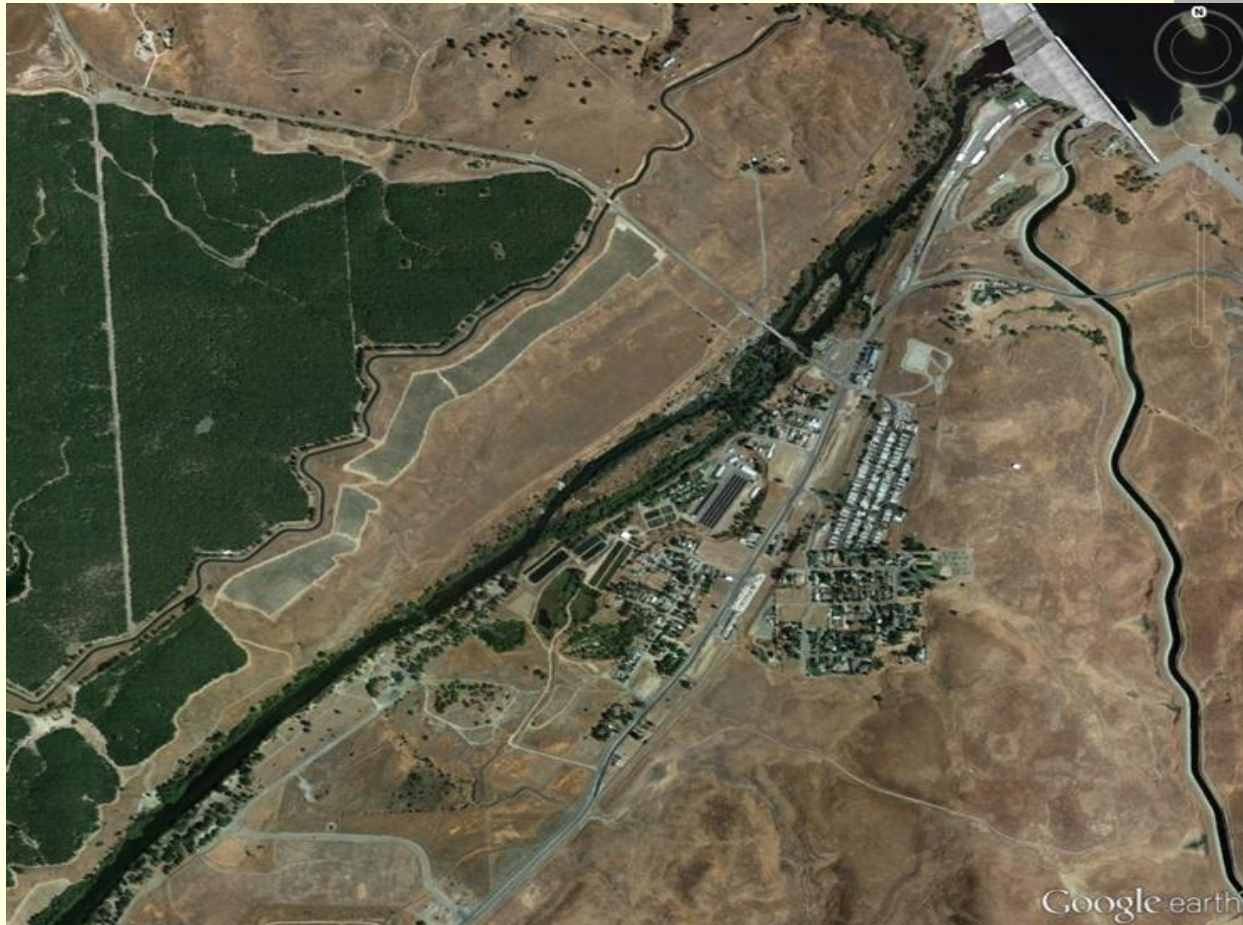
2.5

Miles

14 WCB 2/28/2013 lo/WLB



# #14. San Joaquin River Parkway, Lost Lake Park Campground Improvements Fresno County



- Aerial view of project area



## #14. San Joaquin River Parkway, Lost Lake Park Campground Improvements Fresno County

---



- Restroom in disrepair

#14. San Joaquin River Parkway,  
Lost Lake Park Campground Improvements  
Fresno County

---



- Campground road along riverfront

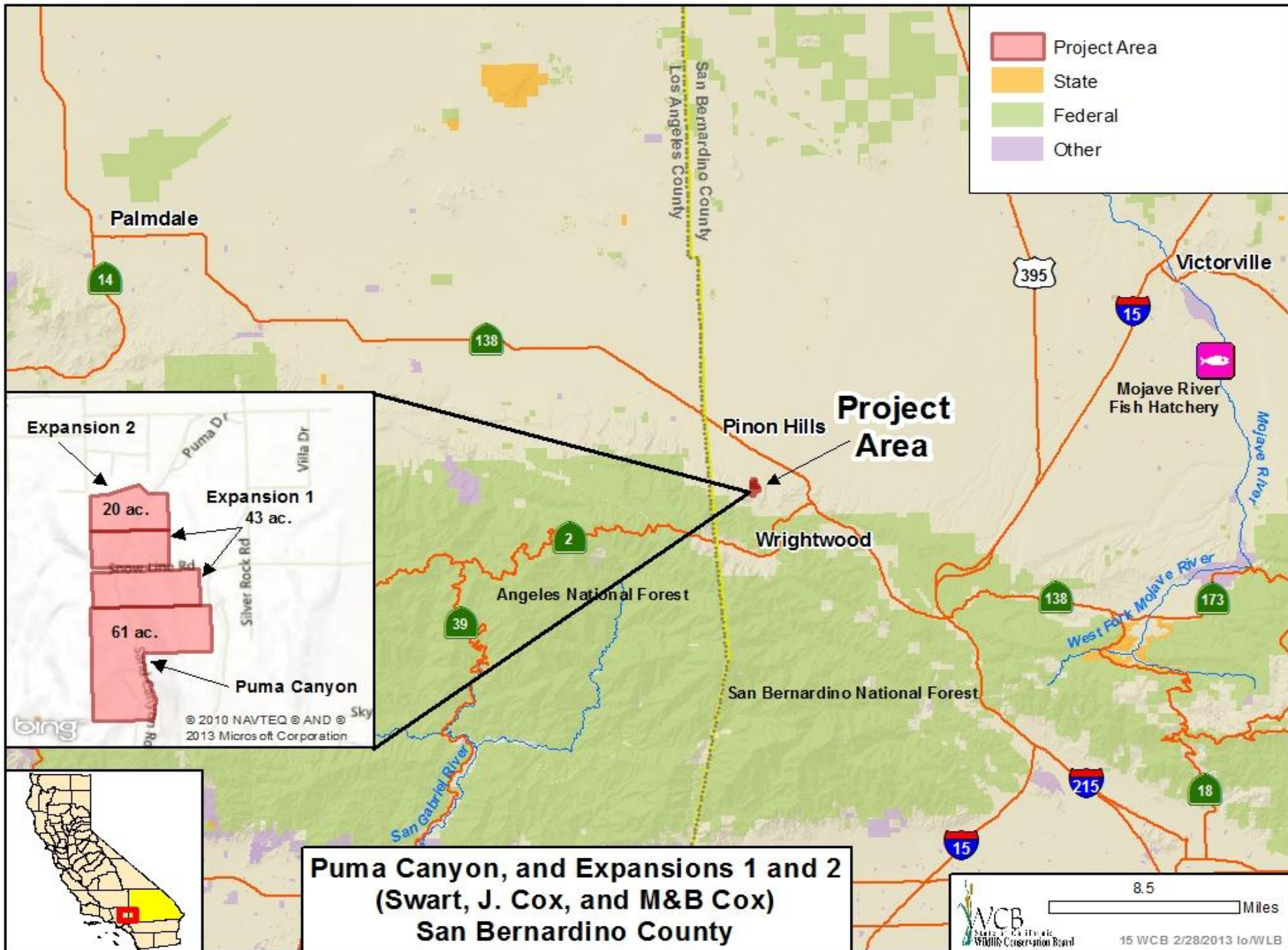


#14. San Joaquin River Parkway,  
Lost Lake Park Campground Improvements  
Fresno County

---



- Typical campsite on the river



- Project Area
- State
- Federal
- Other

**Expansion 2**  
20 ac.

**Expansion 1**  
43 ac.

**Puma Canyon**  
61 ac.

Streets shown: Puma Dr, Villa Dr, Snowflake Rd, Silver Rock Rd.

© 2010 NAVTEQ © AND © 2013 Microsoft Corporation

**Puma Canyon, and Expansions 1 and 2  
(Swart, J. Cox, and M&B Cox)  
San Bernardino County**



#15. Puma Canyon, and Expansions 1 and 2  
(Swart, J. Cox, and M&B Cox)  
San Bernardino County



Photo Courtesy of Transition Habitat Conservancy

- Puma Canyon, from Cox Property looking south across into Swart Property

#15. Puma Canyon, and Expansions 1 and 2  
(Swart, J. Cox, and M&B Cox)  
San Bernardino County

---

- Saylor Property in the winter,  
Joshua Trees



Photo Courtesy of Transition Habitat Conservancy



#15. Puma Canyon, and Expansions 1 and 2  
(Swart, J. Cox, and M&B Cox)  
San Bernardino County



- Puma Canyon, Manzanita, Cholla cactus, Joshua tree and Pinyon pine, Swart Property



#15. Puma Canyon, and Expansions 1 and 2  
(Swart, J. Cox, and M&B Cox)  
San Bernardino County

---



Photo Courtesy of Transition Habitat Conservancy

- Puma Canyon, leopard lizard, Saylor Property



#15. Puma Canyon, and Expansions 1 and 2  
(Swart, J. Cox, and M&B Cox)  
San Bernardino County



- Puma Canyon, looking south from Saylor Property to Cox Property

#15. Puma Canyon, and Expansions 1 and 2  
(Swart, J. Cox, and M&B Cox)  
San Bernardino County



- Puma Canyon, short joint beavertail in bloom, special status species



#15. Puma Canyon, and Expansions 1 and 2  
(Swart, J. Cox, and M&B Cox)  
San Bernardino County



Photo Courtesy of Transition Habitat Conservancy

- Puma Canyon, Cholla cactus in bloom

#15. Puma Canyon, and Expansions 1 and 2  
(Swart, J. Cox, and M&B Cox)  
San Bernardino County



- Puma Canyon, San Diego horned lizard, species of concern



#15. Puma Canyon, and Expansions 1 and 2  
(Swart, J. Cox, and M&B Cox)  
San Bernardino County



Photo Courtesy of Transition Habitat Conservancy

- Puma Canyon looking north from Swart Property across Cox Property

#15. Puma Canyon, and Expansions 1 and 2  
(Swart, J. Cox, and M&B Cox)  
San Bernardino County

---

- Puma Canyon looking north from Swart Property across Cox Property



Photo Courtesy of Transition Habitat Conservancy



#15. Puma Canyon, and Expansions 1 and 2  
(Swart, J. Cox, and M&B Cox)  
San Bernardino County



Photo Courtesy of Transition Habitat Conservancy

- Yucca in bloom

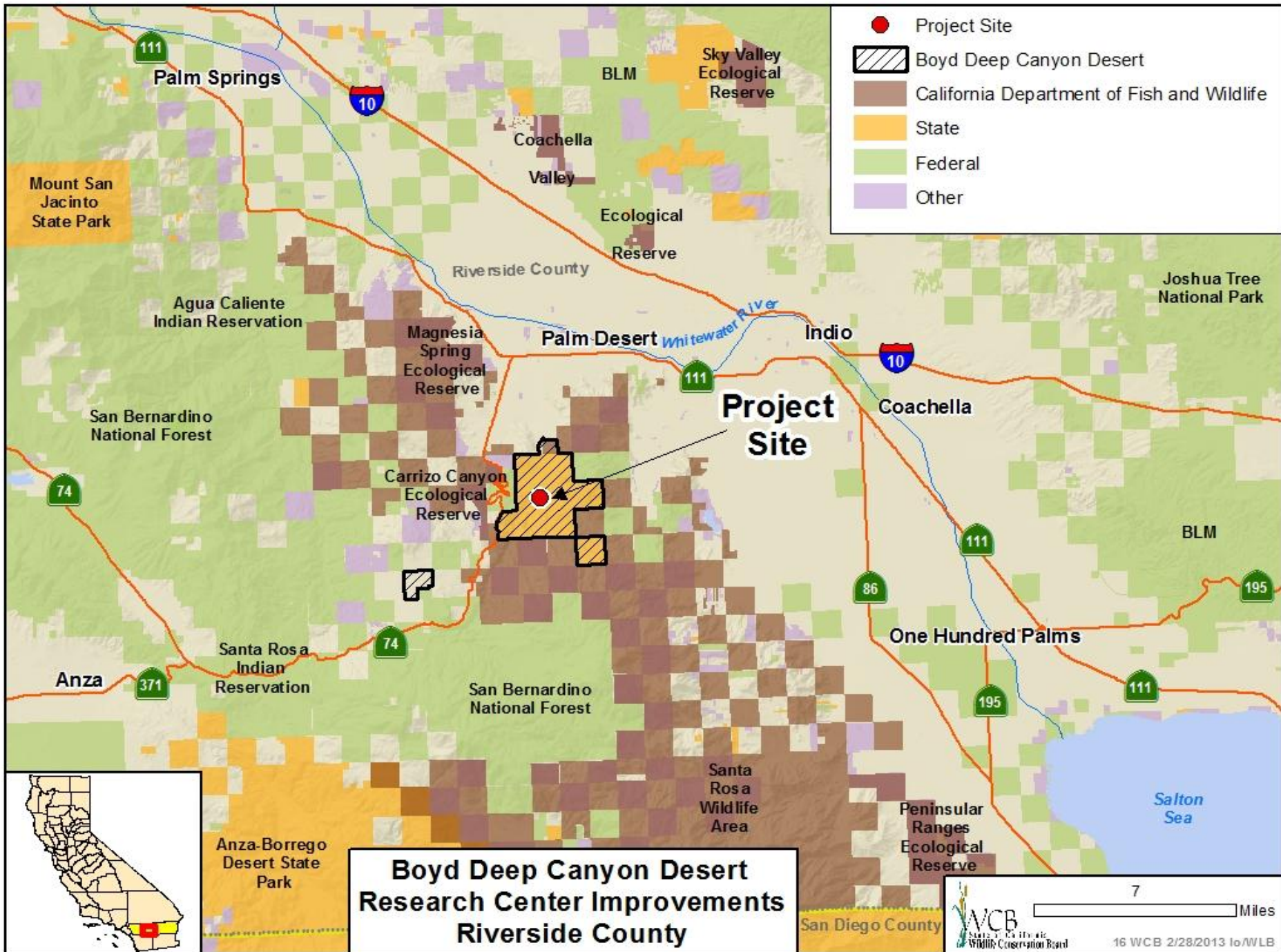
#15. Puma Canyon, and Expansions 1 and 2  
(Swart, J. Cox, and M&B Cox)  
San Bernardino County

---



- Puma Canyon Ridge looking east from Cox Property to Swart Property on next ridge





- Project Site
- Boyd Deep Canyon Desert
- California Department of Fish and Wildlife
- State
- Federal
- Other

**Boyd Deep Canyon Desert  
Research Center Improvements  
Riverside County**



## #16. Boyd Deep Canyon Desert Research Center Improvements Riverside County



- Boyd Deep Canyon Desert Research Center from above. The cottage house will be replaced with an education center. The footprint of the new education center is roughly highlighted



#16. Boyd Deep Canyon Desert  
Research Center Improvements  
Riverside County

---



- Existing cottage house which is structurally unsound will be removed and replaced with an Education Center

## #16. Boyd Deep Canyon Desert Research Center Improvements Riverside County



- Shade structures at the campground and teaching area. Restrooms and rustic lodging will be added to the camping and teaching area to accommodate overnight housing for up to 24 students.