

Summary Report of Black Bass Fishing Contests Held in California during 2012



Lake & Reservoir Management &
Research Project



Summary Report of Black Bass Fishing Contests Held in California during 2012

By

Rebecca Krogman
Environmental Scientist - Warmwater Specialist
Lake & Reservoir Management & Research Project
California Department of Fish & Wildlife

June 2012

This project was funded in part by the Federal Aid in Sport Fish Restoration Act,
Grant F-126-R-5, California.

TABLE OF CONTENTS

Summary Report	1
Introduction.....	4
History of Fishing Contest Management.....	4
Permitting Process.....	4
Reporting Requirement.....	5
Future of Fishing Contest Management.....	5
Permits Issued	6
Participation	8
Fishing Locations	10
Timing	12
Total Catch.....	14
Catch Rate	16
Fish Size	18
Initial Mortality.....	20
References	21
Additional Resources and FAQs.....	22
Where are upcoming tournaments?.....	22
How do I apply for a fishing contest permit?	22
How do I report the results of a fishing contest?.....	22
Do you have guidelines for livewells?	23

TABLE OF CONTENTS

Appendix 1	24
Appendix 2	28
Appendix 3	31

Introduction

Fishing contests represent an important component of recreational fishing in California, and typically include tournaments and derbies. Black bass tournaments represented 89% of all fishing contests held in California in 2012; therefore this report focuses on the black bass subset.

According to Southwick Associates (2011), U.S. bass anglers spend approximately \$9 billion annually on boats, tackle, traveling, renting gear, and other trip-related expenses (based on the USFWS 2006 National Survey on Fishing, Hunting and Wildlife-Associated Recreation). This equates to \$243.43/bass angler. The same national survey indicated that 328,000 state residents targeted black bass in California in 2006 (DOI and DOC 2007). Therefore, California black bass anglers spent an estimated \$80 million pursuing bass that year. Although rough, this may help put into perspective the socioeconomic value of bass angling in the state.

Note that this includes *all* black bass anglers, as California Department of Fish and Wildlife (CDFW) does not currently collect data identifying “tournament” anglers.

History of Fishing Contest Management

Beginning in 1975, organizers offering prizes or other inducements for the taking of sport fish in any California water were required to obtain a fishing contest permit from the CDFW. Since 1985, organizers have been required to submit a “Fishing Contest Report” to the CDFW detailing the results of each permitted contest. In 1990, in an effort to gather more data, regulations were established that provided two types of contests, “Event” and “Annual.” An “Event” type contest permit is designed to regulate large fishing contests often run by commercial organizations. The “Annual” type contest permit is designed to gather data from smaller organized contests, such as those offered by bass clubs or individuals.

Permitting Process

An “Event” type permit is required for contests in which more than 50 anglers will participate or the sponsor is offering \$1,000 or more in prizes or other inducements. An “Event” contest targeting black bass may not exceed 3 days duration, and no more than one “Event” type contest may be held on any water on the same day with the exception of the Sacramento – San Joaquin Delta (Delta). On the Delta, up to 3 “Event” permits may be issued per day as long as only one weigh-in location appears in each of the following counties: San Joaquin, Contra Costa, and Sacramento.

An “Annual” type permit is required for contests with 50 or fewer participants and the sponsor is offering less than \$1,000 in prizes or other inducements. Up to 12 individual contests may appear on each “Annual” type permit, and there is no limit to the number of “Annual” type permits that can be issued for each date and/or water.



Figure 1. 8.42-lb spotted bass caught by Matt Hamilton during a spring tournament at Lake Shasta. Photo by Bill Hutcheson.

Reporting Requirement

For each permit issued, the organizer is required to complete and return a “Fishing Contest Report” form to the CDFW within 30 days of the conclusion of each contest. Report compliance has varied from year to year - averaging about 60% for much of this decade. Beginning in 2007, in an effort to improve compliance, the CDFW began sending a “Letter of Notice” to organizers that specific contest reports were delinquent. In late 2008, CDFW improved reporting procedures by developing a writeable PDF form and e-mail submission procedures. These changes have helped improve sponsor compliance from less than 65% to over 95%.

Future of Fishing Contest Management

Fishing contests can put intense fishing pressure on black bass fisheries. Continued management is essential to ensure fishery health while maintaining and improving recreational fisheries. Management includes activities implemented by CDFW, water control agencies, property or marina managers, fishing contest sponsors, and the anglers.

CDFW does its part by:

- Approving or denying permits to hold fishing contests according to regulations
- Rescinding permits of non-compliant sponsors
- Monitoring fishing contests with an observer
- Responding to angler inquiries and concerns regarding tournaments
- Assessing the effects of fishing contests on the fishery, including poor fish care, barotrauma incidence, and mortality rates

Tournament organizations can do their part as a sponsor by:

- Enforcing proper fish care by participants in your contest
- Following the livewell guidelines provided (See “Additional Resources”)
- Informing your participants of unique conditions at any water, such as the presence of protected aquatic species, areas off limits to fishing, or non-standard length or bag limits
- Communicating with the local marina, water control agency, or property owner to ensure you have the appropriate permits and permissions
- Enforcing any aquatic invasive guidelines for all boats, such as quagga mussel inspections, and ensuring your participants are aware of any required inspections
- Filing your tournament reports in a timely manner.

Anglers can do their part by:

- Taking the best care of your fish possible at all points during the tournament. Remember, high mortality rates don’t just hurt your performance in the tournament; they hurt the fishery. The loss of large fish from the population reduces not only their density (and your catch rates), but also reduces the spawning potential of the population. Big females produce far more eggs than small females.
- Following the livewell guidelines provided (See “Additional Resources”)
- Following directions from sponsors during weigh-ins
- Respecting the special conditions identified for bass tournaments (See “Additional Resources”)
- Following all guidelines and regulations for aquatic invasive species and protected species

Permits Issued

In 2012, a total of 1,989 permits were issued to sponsors offering prizes for the taking of game fish in California. Of those permits, 1,774 were issued for tournaments targeting black bass. Not all permitted contests were held since some contests were cancelled. In 2012, 92% of all black bass fishing contest reports were submitted and used in the analysis described in this report (Figure 2).

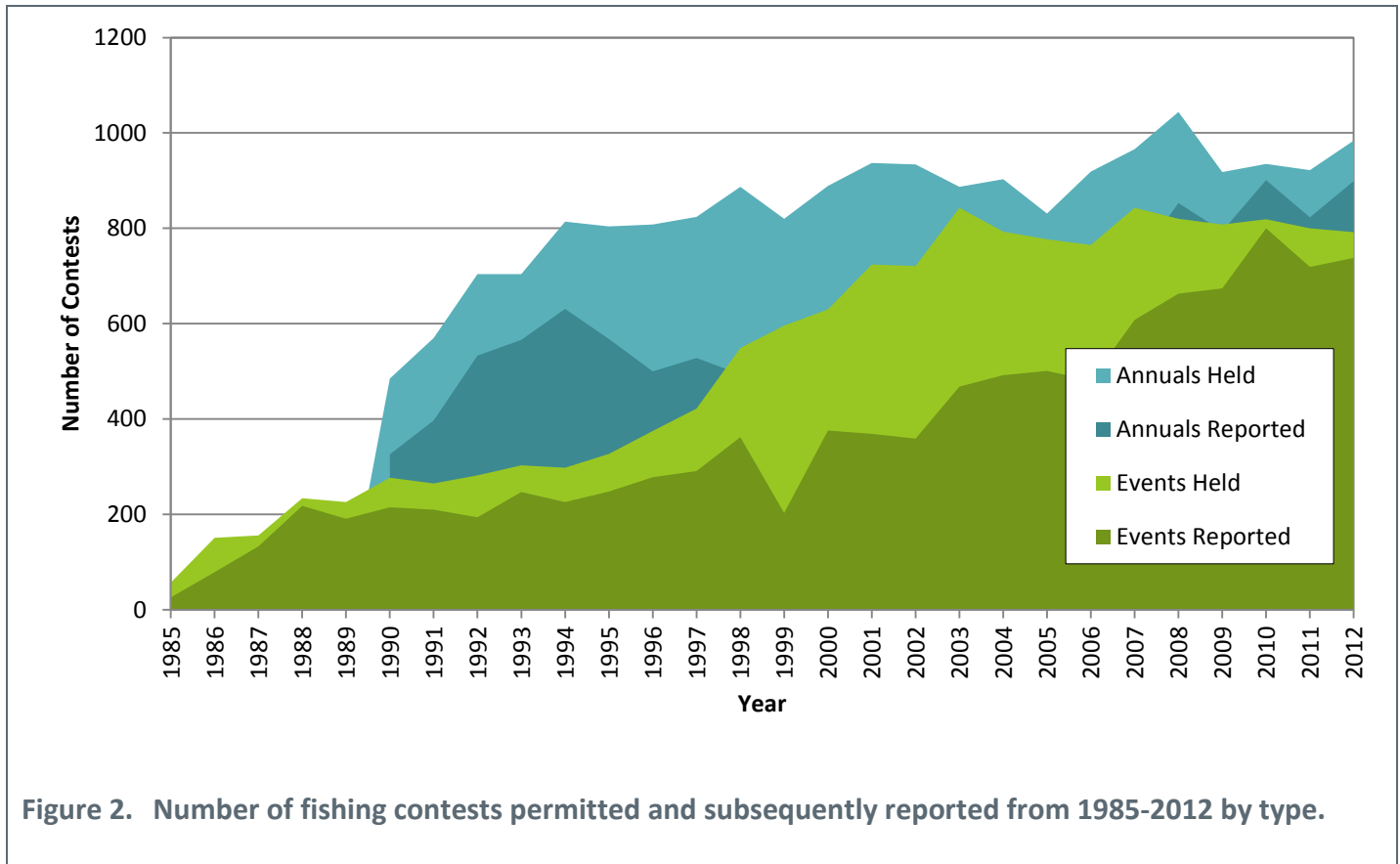


Figure 2. Number of fishing contests permitted and subsequently reported from 1985-2012 by type.

A total of 790 “Event” type fishing contests were permitted in 2012, of which 735 contests submitted complete reports. This represents a slight decrease from the number of contests permitted in 2011, but an increase in the number of contests that submitted complete reports (Table 1). Because 93 contests were cancelled or excluded for various reasons, a total of 642 “Event” type black bass contests were actually reported and held.

A total of 984 “Annual” type contests were permitted in 2012, of which 897 submitted completed reports. The number of “Annual” type contests permitted in 2012 represents a 7% increase from the previous year but still remains well below the high of 1,044 permits issued in 2008 (Table 2). Because 102 contests were cancelled, a total of 795 “Annual” type contests were actually reported and held.

The number of contests permitted has remained fairly consistent for “Event” and “Annual” type contests since 2007.

Table 1. Number of "Event" type bass fishing contests permitted annually from 1985-2012.

Year	Number of Contests	Year	Number of Contests	Year	Number of Contests	Year	Number of Contests
---	---	1990	277	2000	630	2010	819
---	---	1991	265	2001	724	2011	800
---	---	1992	282	2002	721	2012	790
---	---	1993	303	2003	843		
---	---	1994	298	2004	793		
1985	57	1995	327	2005	777		
1986	151	1996	375	2006	765		
1987	156	1997	422	2007	843		
1988	234	1998	549	2008	820		
1989	226	1999	596	2009	808		

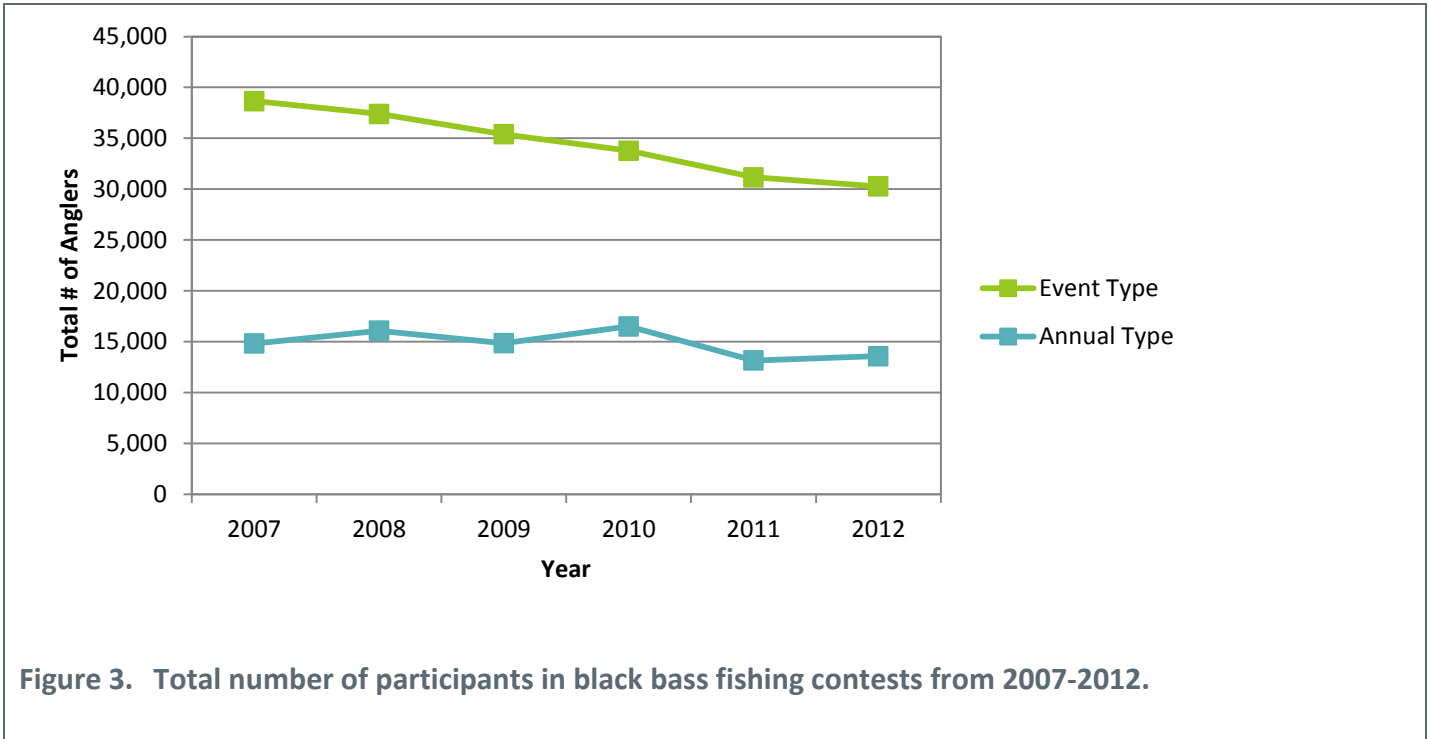
Table 2. Number of "Annual" type bass fishing contests permitted annually from 1985-2012.

Year	Number of Contests	Year	Number of Contests	Year	Number of Contests	Year	Number of Contests
---	---	1990	485	2000	889	2010	935
---	---	1991	570	2001	937	2011	922
---	---	1992	704	2002	934	2012	984
---	---	1993	704	2003	887		
---	---	1994	814	2004	903		
1985	---	1995	804	2005	831		
1986	---	1996	808	2006	919		
1987	---	1997	824	2007	966		
1988	---	1998	887	2008	1,044		
1989	---	1999	820	2009	918		

Participation

Overall participation held fairly constant from last year. The number of participants was similar to 2011 for “Event” type contests and increased 3% for “Annual” type contests (Figure 3). Participation by anglers in “Event” type contests has declined by about 22% since 2007.

The average number of anglers participating in a tournament has decreased for “Event” type contests since 2000, whereas the average participation for “Annual” type contests has remained stable (Figure 4). There was a peak in “Event” type participation rates in 2007, but it has since dropped below 50 anglers per tournament. The largest contest attracted 456 anglers, while the smallest contest attracted 1 angler.



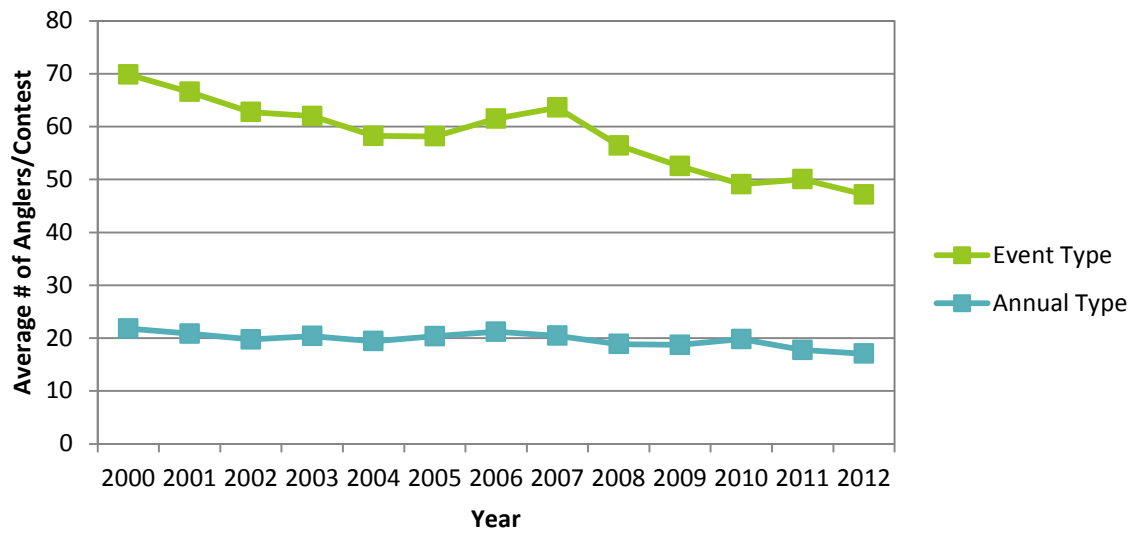


Figure 4. Average number of participants per contest from 2000-2012.

Fishing Locations

“Event” type fishing contests were held on 49 different waters throughout California (Table 3). In northern California, the Sacramento-San Joaquin Delta held the most tournaments of any water body, but up to 3 contests may be permitted on the Delta each day. For locations where only one “Event” type permit was permitted each day, Clear Lake was the most popular location in northern California, while Diamond Valley Lake was the most popular location in southern California. Lake McClure was also a very popular destination, a trend we have not observed in the past.

Table 3. Location and number of “Event” type contests targeting bass in 2012.

Water	# Contests	Water	# Contests
Sacramento - San Joaquin Delta	93	Folsom Lake	7
Clear Lake (Lake County)	44	Lake Casitas	7
Lake McClure	38	Big Bear Lake (San Bernardino County)	6
Diamond Valley Lake	31	Hensley Lake	6
Lake Don Pedro	30	Lake New Melones	5
Lake El Capitan	30	Lake Perris	5
Lake Oroville	30	Lake Sonoma	4
Lake Kaweah	23	Lake Almanor	3
Lake Castaic	22	Silverwood Lake	3
Lake Piru	21	Iron Gate Reservoir	2
Eastman Lake	20	Lake Camanche	2
Millerton Lake	20	Ruth Lake	2
Pine Flat Lake	20	Anderson Lake	1
Lake Santa Margarita	17	Black Butte Reservoir	1
Lake Berryessa	16	Coyote Lake	1
Lake Isabella	16	Lake Amador	1
Lake Nacimiento	15	Lake Pardee	1
Lake Shasta	15	Lake Pillsbury	1
Lake Hodges	13	Lake Skinner	1
Lake Success	13	Lake Sutherland	1
Pyramid Lake	13	Lake Tulloch	1
Lake San Antonio	12	New Hogan Lake	1
Lake Cachuma	11	Stampede Reservoir	1
Lower Otay Lake	11	Trinity Lake	1
Lopez Lake	9		

A total of 797 “Annual” type fishing contests were held on 71 different waters throughout California (Table 4). Again, the greatest number of “Annual” type tournaments were held on the Sacramento-San Joaquin Delta, while Clear Lake also a very popular tournament location. In the southern portion of the state, Diamond Valley Lake was the most popular tournament water, followed closely by Lake El Capitan.

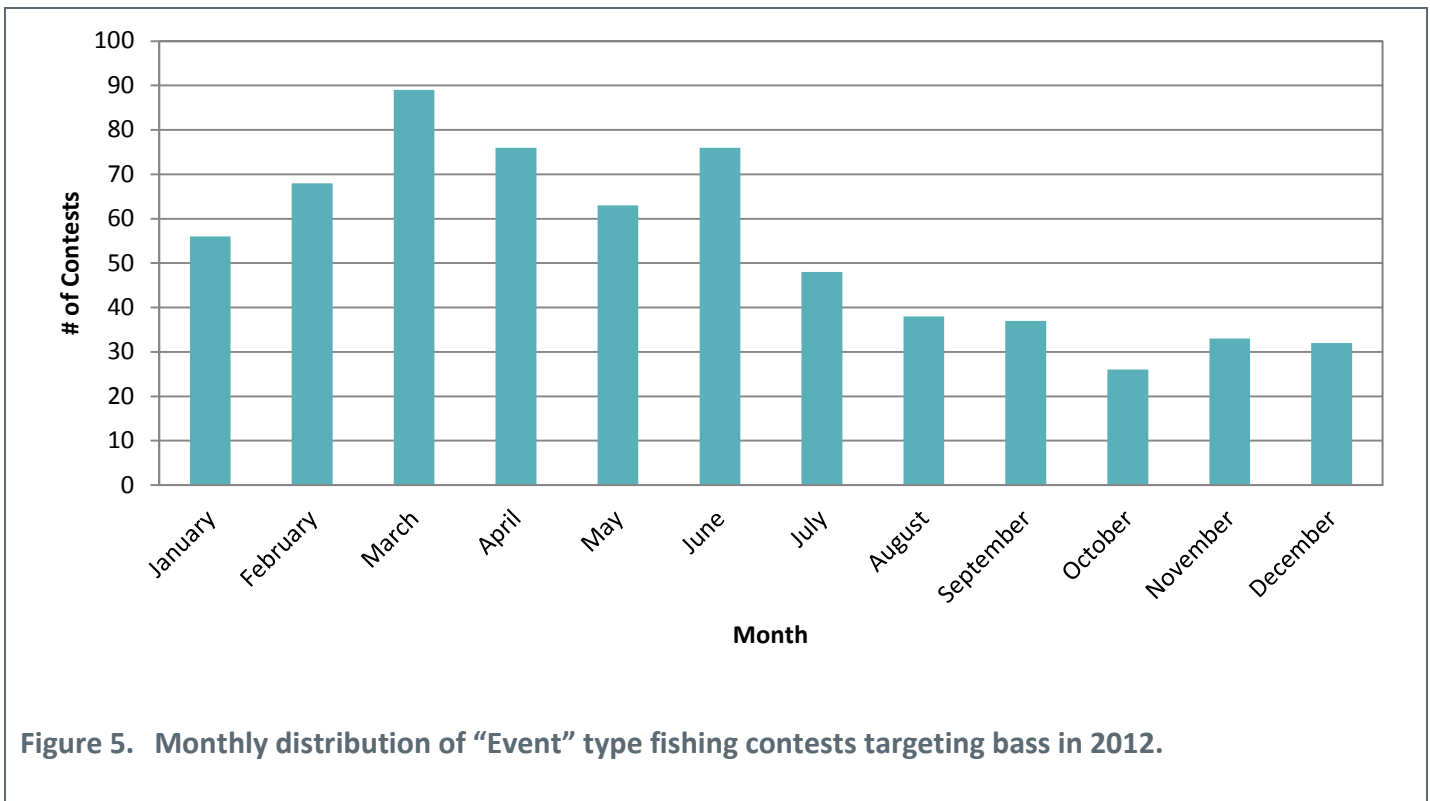
Table 4. Location and number of “Annual” type contests targeting bass in 2012.

Water	# Contests	Water	# Contests
Sacramento - San Joaquin Delta	138	Lake Havasu	5
Clear Lake (Lake County)	75	Lake Murray	5
Lake Shasta	66	New Hogan Lake	5
Lake Don Pedro	34	Whiskeytown Lake	5
Lake Berryessa	31	Castaic Lagoon	4
Lake Oroville	23	Thermalito Afterbay	4
Diamond Valley Lake	21	Antelope Lake	3
Lake Nacimiento	20	Hogan Lake	3
Bullards Bar Reservoir	18	Lake Skinner	3
Lake Camanche	17	Silverwood Lake	3
Lake El Capitan	17	Anderson Lake	2
Lake Piru	17	Big Bear Lake (San Bernardino County)	2
Lake New Melones	16	Black Butte Reservoir	2
Lake Tulloch	16	Irvine Lake	2
Lake Almanor	15	Lake Elsinore	2
Pyramid Lake	15	Salt Springs Reservoir	2
Lake Pardee	14	Walker Lake	2
Lake Santa Margarita	13	Big Lake	1
Lake Cachuma	11	Butt Valley Reservoir	1
Lake Casitas	11	Colorado River	1
Lake McClure	11	East Park Reservoir	1
Lake San Antonio	11	Lake Mendocino	1
Lake Sonoma	11	Lake Shastina	1
Lower Otay Lake	11	Los Banos Reservoir	1
Pine Flat Lake	11	Martinez Reservoir	1
Folsom Lake	10	Morena Reservoir	1
Lopez Lake	10	O'Neill Forebay	1
Trinity Lake	10	Parker Dam Reservoir	1
Lake Hodges	9	Rollins Reservoir	1
Iron Gate Reservoir	8	San Antonio Creek (San Bernardino County)	1
Lake Perris	8	Scotts Flat Reservoir	1
Lake Amador	6	Stony Gorge Reservoir	1
Lake Sutherland	6	Topaz Lake	1
Camp Far West	5	Union Valley Reservoir	1
Lake Britton	5	Upper Blue Lake	1
Lake Castaic	5		

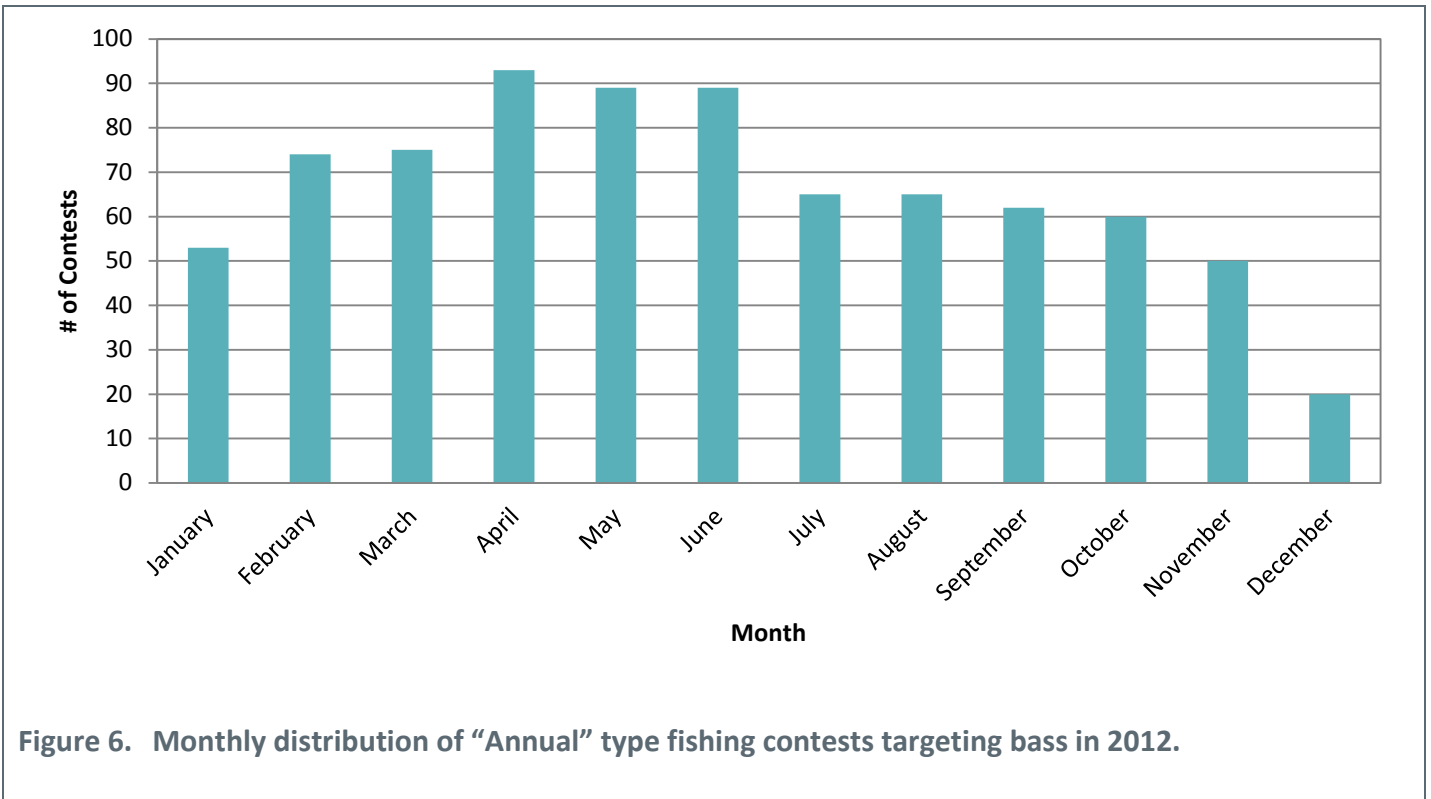
Timing

On average, 120 fishing contests targeting bass were held statewide each month in 2012. During April, the most popular month for bass contests, there were 169 contests held throughout the state. Spring is the preferred time for tournament fishermen to target bass because the fish have typically moved up into the shallow water and feed aggressively in preparation for spawning. Since most contests are held on either Saturday or Sunday, there were approximately 21 fishing contests held each weekend day during the month of April.

On average, 54 “Event” type contests were held each month throughout the state. The lowest number of contests per month was during the month of October (*Figure 5*). Fishing contests peaked during March. This year, fall was the least popular season for contests. Fewer sponsors avoided the period from June 15th – September 15th than in the past, a trend related to the 6-hour rule. This rule limits time between blast off and the first weigh-in, not to exceed six hours in duration during the peak of summer. The 6-hour rule was implemented to help protect fish health.



For “Annual” type fishing contests, organizers conducted an average of 66 tournaments each month (*Figure 6*). April was the most popular month to hold a tournament with 93 contests held that month statewide. The 6-hour rule did not seem to deter organizers of “Annual” type contests either, as 196 contests were held between June 15th and September 15th. December was the least desirable month for sponsors of “Annual” type permits.



Total Catch

A total of 113,072 bass were reported caught in fishing contests in 2012. This is for all species combined – largemouth, smallmouth, and spotted bass – because organizers seldom separated catch by species in fishing contest reports. This represents a 4% increase compared to total catch reported in 2011, and an 8% decrease in the 5-year average (*Figure 7*).

By contest type, organizers of “Event” type contests reported a total catch of 75,686 black bass (*Table 5*). This represents a 1% decrease in total catch from that reported in 2011. For “Annual” type contests, organizers reported a total catch of 37,385 black bass (*Table 6*). This represents a 15% increase in total catch from that reported in 2011 for “Annual” contest types.

Table 5. Total number of bass caught in “Event” type fishing contests from 1985-2012.

Year	Total Catch	Year	Total Catch	Year	Total Catch	Year	Total Catch
---	---	1990	44,602	2000	61,868	2010	81,248
---	---	1991	34,099	2001	56,458	2011	76,421
---	---	1992	39,166	2002	52,951	2012	75,686
---	---	1993	47,321	2003	68,895		
---	---	1994	53,645	2004	81,715		
1985	6,011	1995	50,095	2005	71,441		
1986	15,663	1996	55,571	2006	78,475		
1987	32,807	1997	60,874	2007	119,436		
1988	36,437	1998	64,930	2008	100,675		
1989	32,109	1999	33,755	2009	90,668		

Table 6. Total number of bass caught in “Annual” type fishing contests from 1985-2012.

Year	Total Catch	Year	Total Catch	Year	Total Catch	Year	Total Catch
---	---	1990	12,170	2000	22,224	2010	38,349
---	---	1991	12,600	2001	24,624	2011	32,458
---	---	1992	21,510	2002	22,683	2012	37,385
---	---	1993	25,715	2003	24,363		
---	---	1994	35,125	2004	29,685		
1985	---	1995	28,882	2005	24,815		
1986	---	1996	28,138	2006	34,148		
1987	---	1997	31,013	2007	44,403		
1988	---	1998	26,291	2008	39,537		
1989	---	1999	5,452	2009	35,801		

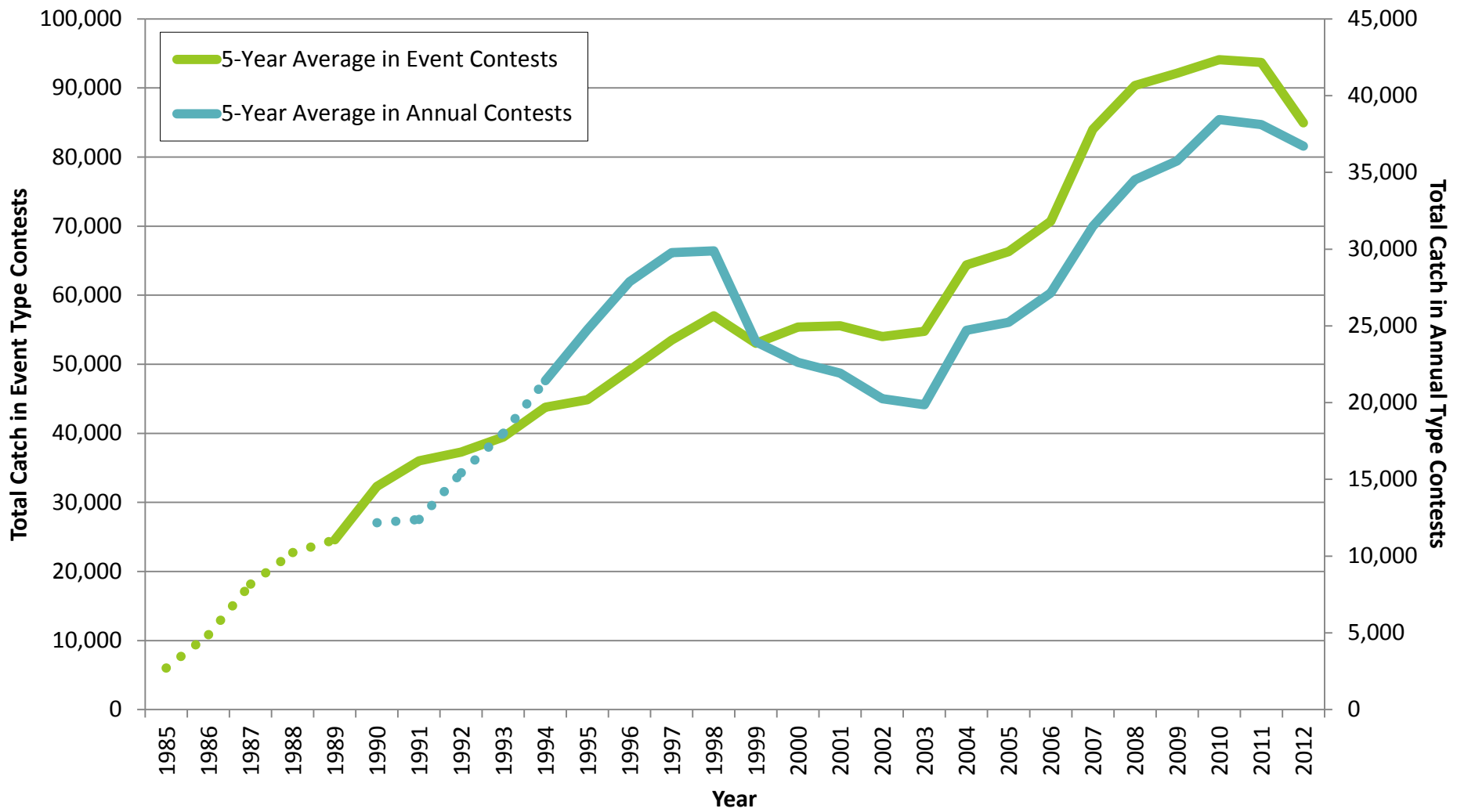


Figure 7. Five-year average in total catch of black bass in fishing contests from 1985-2012. Dotted lines indicate that less than 5 years were used calculate the value, due to the date at which initial data collection began.

Catch Rate

The overall catch rate for all bass contests held in 2012 was 0.33 fish/hour. The catch rates for “Event” (Table 7) and “Annual” (Table 8) type contests were 0.32 fish/hour and 0.34 fish/hour, respectively. Over all reporting years, the catch rate for tournament-caught bass has slowly risen (Figure 8).

Table 7. Catch rate (fish/hour) of bass by year for “Event” type bass fishing contests from 1985-2012.

Year	Catch Rate	Year	Catch Rate	Year	Catch Rate	Year	Catch Rate
---	---	1990	0.22	2000	0.26	2010	0.25
---	---	1991	0.18	2001	0.28	2011	0.28
---	---	1992	0.20	2002	0.29	2012	0.32
---	---	1993	0.21	2003	0.25		
---	---	1994	0.25	2004	0.26		
1985	0.21	1995	0.23	2005	0.24		
1986	0.17	1996	0.25	2006	0.25		
1987	0.23	1997	0.26	2007	0.27		
1988	0.18	1998	0.25	2008	0.28		
1989	0.19	1999	0.24	2009	0.26		

Table 8. Catch rate (fish/hour) of bass by year for “Annual” type bass fishing contests from 1985-2012.

Year	Catch Rate	Year	Catch Rate	Year	Catch Rate	Year	Catch Rate
---	---	1990	0.20	2000	0.26	2010	0.26
---	---	1991	0.18	2001	0.27	2011	0.29
---	---	1992	0.21	2002	0.29	2012	0.34
---	---	1993	0.22	2003	0.25		
---	---	1994	0.27	2004	0.26		
1985	---	1995	0.25	2005	0.26		
1986	---	1996	0.27	2006	0.28		
1987	---	1997	0.29	2007	0.30		
1988	---	1998	0.27	2008	0.28		
1989	---	1999	0.28	2009	0.26		

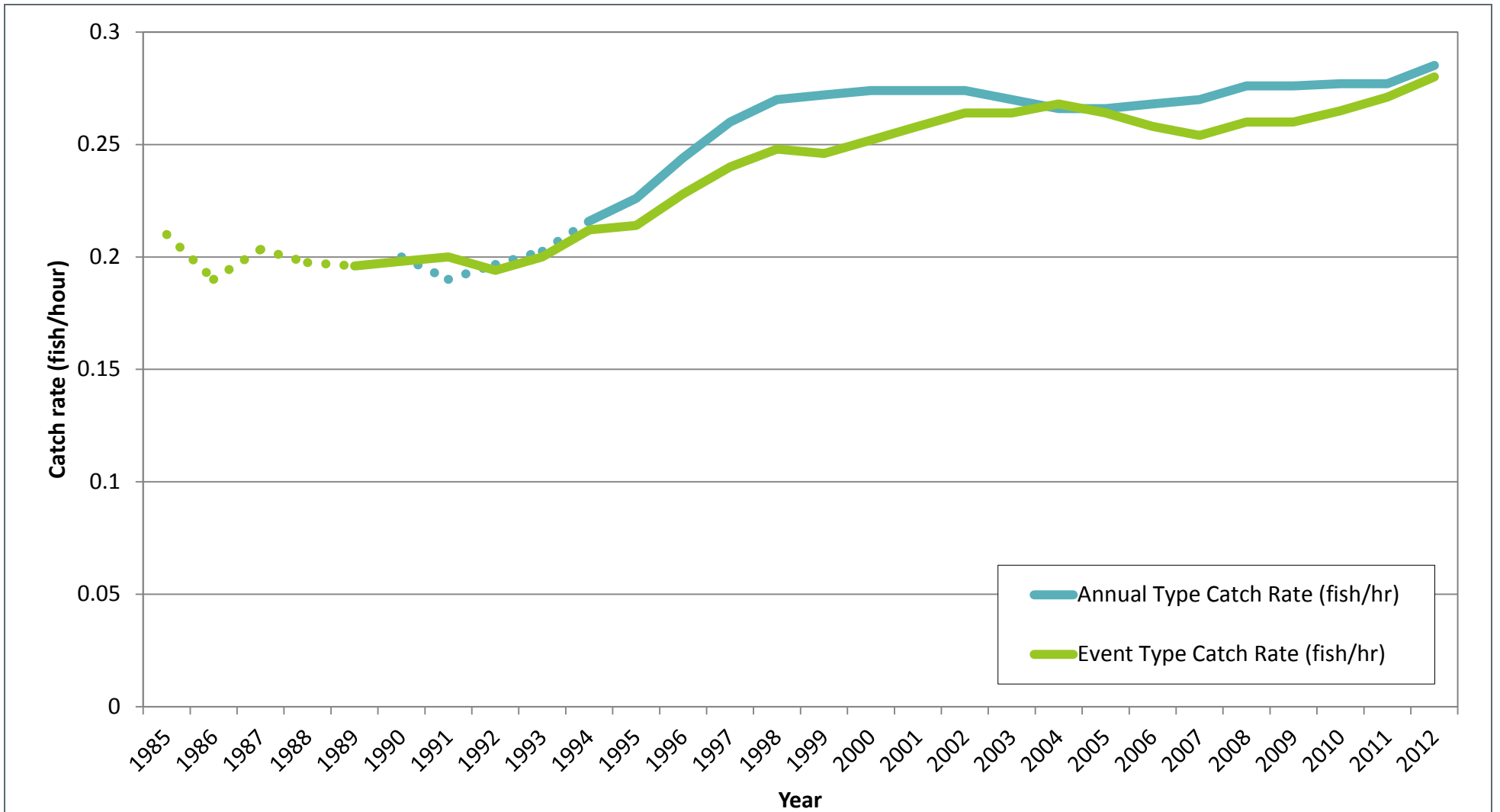


Figure 8. Five-year average catch rate (fish/hour) in “Annual” and “Event” type fishing contests from 1985-2012. Dotted lines indicate that less than 5 years were used calculate the value, due to the date at which initial data collection began.

Fish Size

The average weight of all black bass weighed in during 2012 was 2.31 pounds, a 1% increase from the average size reported in 2011. This is the combined average weight of largemouth, smallmouth, and spotted bass. In “Event” type contests, the average bass weighed 2.47 pounds (*Table 9*). In “Annual” type contests, the average weight of bass was 2.18 pounds (*Table 10*).

Table 9. Average weight (lbs) of bass caught in “Event” type fishing contests from 1985-2012.

Year	Average Weight	Year	Average Weight	Year	Average Weight	Year	Average Weight
---	---	1990	1.76	2000	1.98	2010	2.19
---	---	1991	1.70	2001	2.01	2011	2.41
---	---	1992	1.83	2002	2.22	2012	2.47
---	---	1993	1.92	2003	2.21		
---	---	1994	1.90	2004	2.22		
1985	---	1995	1.88	2005	2.30		
1986	---	1996	1.91	2006	2.32		
1987	---	1997	1.93	2007	2.18		
1988	---	1998	2.00	2008	2.40		
1989	---	1999	2.08	2009	2.24		

Table 10. Average weight (lbs) of bass caught in “Annual” type fishing contests from 1985-2012.

Year	Average Weight	Year	Average Weight	Year	Average Weight	Year	Average Weight
---	---	1990	1.62	2000	1.88	2010	2.05
---	---	1991	1.57	2001	1.92	2011	2.17
---	---	1992	1.50	2002	2.03	2012	2.18
---	---	1993	1.58	2003	2.14		
---	---	1994	1.64	2004	2.12		
1985	---	1995	1.66	2005	2.10		
1986	---	1996	1.67	2006	2.01		
1987	---	1997	1.84	2007	2.12		
1988	---	1998	1.83	2008	2.13		
1989	---	1999	2.09	2009	1.94		

At each tournament, a record is kept noting the largest bass weighed in at that contest. In 2012, the largest bass weighed in during a bass tournament was a largemouth bass that weighed 15.79 pounds, taken on 1/21/12 from Lake Kaweah. Other large fish taken during bass tournaments in 2012 were also largemouth bass, one caught from Camanche Reservoir weighing 15.34 pounds (3/19/12), one from Folsom Lake weighing 15.12 pounds (4/14/12), and another from Lake Kaweah weighing 15.1 pounds (6/16/12).

While these bass are trophy class fish, they are not the largest bass caught during a tournament in California. The largest tournament-caught bass on record (18.24 pounds) was caught in 1993 from Lake Cachuma (*Table 11*).

Table 11. Largest tournament-caught bass in California each year between 1986 -2012. The largest tournament-caught bass on record in California is highlighted.

Year	Location	Date Caught	Species	Weight (lbs)
1986	Clear Lake	6/15/1986	Largemouth	12.80
1987	Lake Castaic	6/6/1987	Largemouth	17.90
1988	Lake Cachuma	3/18/1988	Largemouth	16.40
1989	Lake Castaic	6/10/1989	Largemouth	13.00
1990	Lake Casitas	3/10/1990	Largemouth	15.80
1991	Clear Lake	6/1/1991	Largemouth	15.38
1992	Lake Castaic	6/20/1992	Largemouth	17.87
1993	Lake Cachuma	4/17/1993	Largemouth	18.24
1994	Lake Casitas	4/30/1994	Largemouth	15.47
1995	Lake Castaic	6/10/1995	Largemouth	13.71
1996	Lake Perris	11/10/1996	Largemouth	15.38
1997	Lake Hodges	9/27/1997	Largemouth	16.50
1998	Lake Shasta	11/19/1998	Largemouth	16.56
1999	Lake Casitas	6/19/1999	Largemouth	14.74
2000	CA Delta	4/30/2000	Largemouth	17.57
2001	Lake Perris	11/11/2001	Largemouth	14.04
2002	Lake Casitas	6/15/2002	Largemouth	15.54
2003	CA Delta	4/12/2003	Largemouth	14.08
2004	Lake Success	5/15/2004	Largemouth	14.76
2005	Lake Shasta	10/9/2005	Largemouth	15.84
2006	CA Delta	4/15/2006	Largemouth	15.81
2007	Lake Pyramid	5/6/2007	Largemouth	16.40
2008	CA Delta	4/5/2008	Largemouth	14.25
2009	CA Delta	4/11/2009	Largemouth	15.59
2011	New Melones Reservoir	3/20/2011	Largemouth	18.11
2012	Lake Kaweah	1/21/2012	Largemouth	15.79

Initial Mortality

Tournament organizers are required, insofar as possible, to release all bass alive and in good condition back to the water where taken. In some instances bass are brought to the weigh-in scales dead; this is recorded as initial mortality on the Fishing Contest Report submitted by the contest organizer. Initial mortality is the only type of tournament-associated loss regularly monitored for bass fishing contests, although an unknown amount of delayed mortality occurs after release. Delayed mortality can be significant, and has been documented as high as 85% in other states.

For both “Event” type and “Annual” type contests held in 2012, organizers reported an initial mortality of 1.1% (*Table 12* and *Table 13*). Initial mortality has remained less than 2.0% since 1988, when CDFW implemented the “Special Black Bass Tournament Conditions” to protect fish health.

Table 12. Initial mortality rate (%) of bass caught in “Event” type fishing contests from 1985 - 2012.

Year	Initial Mortality	Year	Initial Mortality	Year	Initial Mortality	Year	Initial Mortality
---	---	1990	1.2	2000	1.3	2010	0.7
---	---	1991	0.9	2001	1.1	2011	0.9
---	---	1992	1.1	2002	1.0	2012	1.1
---	---	1993	0.7	2003	0.9		
---	---	1994	0.7	2004	1.0		
1985	2.8	1995	0.8	2005	0.9		
1986	2.0	1996	0.9	2006	1.1		
1987	2.3	1997	1.0	2007	0.8		
1988	1.4	1998	1.0	2008	0.8		
1989	1.6	1999	0.9	2009	1.0		

Table 13. Initial mortality rate (%) of bass caught in “Annual” type fishing contests from 1985-2012.

Year	Initial Mortality	Year	Initial Mortality	Year	Initial Mortality	Year	Initial Mortality
---	---	1990	2.0	2000	1.4	2010	0.9
---	---	1991	1.5	2001	1.3	2011	0.9
---	---	1992	1.9	2002	1.2	2012	1.1
---	---	1993	1.9	2003	1.2		
---	---	1994	1.7	2004	1.3		
1985	---	1995	5.0	2005	1.2		
1986	---	1996	1.4	2006	1.6		
1987	---	1997	1.8	2007	1.2		
1988	---	1998	1.4	2008	1.1		
1989	---	1999	2.1	2009	1.1		

REFERENCES

DOI (U.S. Department of the Interior, Fish and Wildlife Service) and DOC (U.S. Department of Commerce, U.S. Census Bureau). 2007. 2006 National Survey of Fishing, Hunting, and Wildlife-Associated Recreation: California.

Southwick Associates. 2011. Fishing Participation and Market Trends: 2011 Bass Angler Report. Southwick Associates: Fernandina Beach, Florida.

ADDITIONAL RESOURCES AND FAQs

Where are upcoming tournaments?

Upcoming fishing contests are listed online at: <https://nrm.dfg.ca.gov/FishingContests/default.aspx>.

I am from the local lake management (e.g., water control agency, state park, marina). Where can I get more information on the contests scheduled in my area? Your online portal does not provide enough information.

Contact Rebecca Krogman, the Lake and Reservoir Program's Warmwater Specialist, for more information at Rebecca.Krogman@wildlife.ca.gov or (916) 327-8849.

How do I apply for a fishing contest permit?

To apply for a fishing contest permit with CDFW, complete form FG-775, accessible online at <https://nrm.dfg.ca.gov/FileHandler.ashx?DocumentID=16629>. An additional form is required for "annual" type contests in CDFW Region 4, accessible at <https://nrm.dfg.ca.gov/FileHandler.ashx?DocumentID=9895>. Forms requesting exemption from fishing regulations are also available online at <http://www.dfg.ca.gov/fish/Administration/Permits/FishingContest/>.

Mail or turn in your application at your regional CDFW headquarters, with an address line "ATTN: Fishing Contest Application." The appropriate addresses are listed online: <https://nrm.dfg.ca.gov/FileHandler.ashx?DocumentID=17840>.

How do I report the results of a fishing contest?

Within 30 days of your contest's conclusion, you should complete form FG-776, accessible online at <https://nrm.dfg.ca.gov/FileHandler.ashx?DocumentID=3324>. You can turn this report in via email to contestreports@wildlife.ca.gov or via mail to:

ATTN: Fishing Contest Reports
Fisheries Branch
830 "S" Street
Sacramento, CA 95811

Do you have guidelines for livewells?

We recommend checking livewells before the tournament begins. Immediate disqualification may be an effective method of ensuring anglers adhere to your livewell requirements.

All bass shall be kept in a follow-me bag (for float tubers) or livewell. Livewells must meet or exceed the following dimensions: Minimum 48 quart ice chest. Plastic bins or storage totes are not allowed or approved to use as a livewell. Livewells must also have an electric bilge pump with a Minimum 500 GPH (gallons per hour) set up so it fills the livewell with water and creates oxygen for the fish by spraying the surface of the water. Livewells must also have an overflow for fresh water. Battery operated oxygen bubblers may also be used but are not mandatory.

During special running tournaments, bilge pump and bubbler must be running at all times during travel and at the weigh-in line. The use of rejuvenate or bass meds of some sort may also be used during running events.

Homemade live wells and/or follow-me bags should be pre-approved by the Tournament Director, Tournament Director Assistants or designated club officer.

These guidelines were originally developed by the Sonoma County Belly Boat Bass Club. We recommend adopting a similar policy as part of your fishing contest rules.

Appendix I

SUMMARY OF 2012 FISHING CONTEST REPORTS
BY INDIVIDUAL WATER

ALL CONTEST TYPES

SUMMARY OF 2012 FISHING CONTEST REPORTS BY INDIVIDUAL WATER

All Contest Types

Water Name	Contest Days	Total Fish Count	Total Fish Weight	Total Fish Reported Dead	Number of Competitors	Total Contest Hours	Total Hours Effort	Mean Catch Per Hour	Mean Weight Per Fish
Anderson Lake	3	312	472.3	1	132	24.5	1,066.0	0.30	1.51
Antelope Lake	3	90	192.4	0	52	25.0	438.0	0.21	2.06
Big Bear Lake (San Bernardino County)	8	173	405.8	1	80	52.0	504.0	0.34	2.15
Big Lake	1	21	77.3	0	13	8.0	104.0	0.20	3.68
Black Butte Reservoir	4	195	381.4	2	71	27.0	666.0	0.30	1.91
Bullards Bar Reservoir	21	257	542.1	0	235	144.5	1,877.0	0.15	2.17
Butt Valley Reservoir	1	35	73.5	0	14	8.0	112.0	0.31	2.10
Camp Far West	6	186	284.8	0	81	39.0	642.0	0.31	1.56
Castaic Lagoon	4	162	337.4	0	76	28.0	533.0	0.27	2.20
Clear Lake (Lake County)	176	12,963	58,278.4	123	4,270	1,178.8	45,478.0	0.30	3.77
Colorado River	2	70	175.3	3	15	8.0	120.0	0.58	2.50
Coyote Lake	1	50	197.0	0	50	8.0	400.0	0.13	3.94
Diamond Valley Lake	61	3,845	10,779.0	78	2,524	388.0	18,709.0	0.26	2.97
East Park Reservoir	1	25	39.4	1	18	8.0	144.0	0.17	1.58
Eastman Lake	20	1,045	2,203.0	29	458	140.0	3,278.5	0.32	2.09
Folsom Lake	17	1,081	2,466.6	104	421	130.8	3,402.4	0.29	2.29
Hensley Lake	6	337	599.6	2	158	45.0	1,202.0	0.27	1.71
Hogan Lake	3	131	221.0	3	57	22.0	404.0	0.32	1.74
Iron Gate Reservoir	17	351	710.2	2	150	104.0	1,740.0	0.30	1.91
Irvine Lake	2	97	190.0	1	33	12.0	198.0	0.53	1.99
Lake Almanor	21	850	2,194.6	12	342	168.5	3,161.0	0.28	2.45
Lake Amador	9	412	925.6	10	125	64.0	1,160.0	0.35	2.15
Lake Berryessa	50	3,203	7,959.9	14	1,460	391.7	12,053.6	0.28	2.40
Lake Britton	8	242	489.4	0	77	43.0	652.0	0.44	2.00
Lake Cachuma	27	3,102	2,609.0	17	401	204.5	3,756.5	1.21	1.93
Lake Camanche	20	519	1,117.9	2	316	157.7	2,889.4	0.18	2.21
Lake Casitas	18	608	1,687.4	0	327	156.8	2,676.5	0.19	2.38
Lake Castaic	32	1,932	4,467.5	31	988	198.0	7,014.0	0.27	2.44
Lake Don Pedro	71	5,970	13,082.6	104	2,229	531.0	18,558.0	0.38	2.28
Lake El Capitan	47	2,675	6,866.1	35	1,269	367.0	9,922.0	0.27	2.41

Water Name	Contest Days	Total Fish Count	Total Fish Weight	Total Fish Reported Dead	Number of Competitors	Total Contest Hours	Total Hours Effort	Mean Catch Per Hour	Mean Weight Per Fish
Lake Elsinore	2	27	60.3	0	33	16.0	264.0	0.10	2.28
Lake Havasu	9	450	1,378.3	10	72	68.0	1,032.0	0.43	2.80
Lake Hodges	23	1,714	4,005.3	9	657	179.5	5,114.0	0.35	2.30
Lake Isabella	17	704	2,059.9	11	380	110.0	2,526.0	0.28	3.00
Lake Kaweah	25	1,268	2,627.8	20	737	171.0	5,231.5	0.25	2.13
Lake McClure	51	6,904	9,117.7	57	1,901	396.0	15,243.0	0.41	1.81
Lake Mendocino	1	23	38.4	0	10	8.0	80.0	0.29	1.67
Lake Murray	5	108	193.7	0	65	42.0	502.0	0.21	1.68
Lake Nacimiento	42	3,406	5,089.9	18	1,110	323.5	9,314.0	0.39	1.46
Lake New Melones	24	1,383	2,584.4	18	500	187.5	4,090.5	0.35	1.90
Lake Oroville	59	5,524	11,172.7	39	2,124	459.0	18,063.3	0.30	2.02
Lake Pardee	15	521	857.2	137	325	110.6	2,479.2	0.26	1.83
Lake Perris	13	394	1,052.0	18	373	108.5	3,074.0	0.15	2.70
Lake Pillsbury	1	80	260.9	1	60	8.5	510.0	0.16	3.26
Lake Piru	51	2,513	6,820.0	33	1,138	269.0	8,021.0	0.33	2.82
Lake San Antonio	29	1,501	3,439.9	16	588	207.5	5,001.5	0.30	2.24
Lake Santa Margarita	40	2,129	6,324.8	23	1,020	256.5	8,507.5	0.43	2.85
Lake Shasta	97	7,831	12,306.7	48	1,728	736.0	19,998.0	0.39	1.62
Lake Shastina	2	68	140.0	0	23	19.0	437.0	0.16	2.06
Lake Skinner	5	122	266.1	0	47	39.0	411.0	0.31	2.27
Lake Sonoma	16	863	1,874.5	2	339	129.5	2,888.0	0.34	2.11
Lake Success	14	970	1,902.6	15	474	94.5	3,453.0	0.28	1.99
Lake Sutherland	7	201	404.0	4	90	58.0	683.0	0.28	1.98
Lake Tulloch	17	507	1,013.4	5	380	86.0	1,840.0	0.27	1.93
Lopez Lake	21	1,300	3,021.4	9	513	175.5	4,557.0	0.29	2.23
Los Banos Reservoir	1	10	17.4	0	8	7.0	56.0	0.18	1.74
Lower Otay Lake	23	1,179	2,828.8	16	581	165.0	4,252.0	0.27	2.50
Martinez Reservoir	2	67	87.9	0	17	14.0	238.0	0.28	1.31
Millerton Lake	21	1,763	2,508.7	24	706	165.0	5,769.0	0.32	1.44
Morena Reservoir	2	40	43.0	2	22	12.0	264.0	0.15	1.08
New Hogan Lake	6	216	441.9	1	90	46.0	678.0	0.32	2.06
O'Neill Forebay	1	16	37.4	0	10	10.0	100.0	0.16	2.34
Parker Dam Reservoir	2	28	41.5	0	8	8.0	64.0	0.44	1.48
Pine Flat Lake	33	1,958	2,601.0	23	750	249.5	5,904.0	0.37	1.36
Pyramid Lake	28	1,470	2,982.4	11	708	214.0	5,462.0	0.30	2.00
Rollins Reservoir	1	37	43.8	1	28	8.0	224.0	0.17	1.18
Ruth Lake	2	154	396.0	7	74	18.0	666.0	0.23	2.59
Sacramento - San Joaquin	247	21,386	53,020.3	130	8,029	1,818.9	66,531.2	0.35	2.38

SUMMARY OF 2012 FISHING CONTEST REPORTS BY INDIVIDUAL WATER

All Contest Types

Water Name	Contest Days	Total Fish Count	Total Fish Weight	Total Fish Reported Dead	Number of Competitors	Total Contest Hours	Total Hours Effort	Mean Catch Per Hour	Mean Weight Per Fish
Delta									
Salt Springs Reservoir	2	82	189.5	0	34	12.0	204.0	0.42	2.28
San Antonio Creek (San Bernardino County)	1	35	64.7	0	28	8.5	238.0	0.15	1.85
Silverwood Lake	6	136	337.0	2	83	49.0	674.0	0.21	2.76
Stony Gorge Reservoir	1	26	34.8	4	20	6.0	120.0	0.22	1.34
Thermalito Afterbay	5	120	243.6	0	60	35.0	567.0	0.22	2.02
Topaz Lake	1	11	24.1	0	10	8.0	80.0	0.14	2.19
Trinity Lake	17	445	958.3	3	152	119.0	1,548.0	0.29	2.06
Union Valley Reservoir	1	25	34.9	0	18	9.4	169.7	0.15	1.39
Upper Blue Lake	1	61	121.0	3	31	6.0	186.0	0.33	1.98
Walker Lake	2	74	151.5	0	46	15.5	332.0	0.23	2.02
Whiskeytown Lake	5	135	299.1	0	69	41.0	574.0	0.22	2.21
Statewide Totals	1,657	110,924	253,772.6	1,295	42,711	11,986.0	361,082.3	0.33	2.31

Appendix 2

SUMMARY OF 2012 FISHING CONTEST REPORTS BY INDIVIDUAL WATER “EVENT” TYPE CONTESTS

SUMMARY OF 2012 FISHING CONTEST REPORTS BY INDIVIDUAL WATER

Event Type Contests

Water Name	Contest Days	Total Fish Count	Total Fish Weight	Total Fish Reported Dead	Number of Competitors	Total Contest Hours	Total Hours Effort	Mean Catch Per Hour	Mean Weight Per Fish
Anderson Lake	1	207	320.9	1	90	8.0	720.0	0.29	1.55
Big Bear Lake (San Bernardino County)	6	98	205.3	0	46	40.0	300.0	0.34	2.11
Black Butte Reservoir	1	67	121.5	0	32	9.0	288.0	0.23	1.81
Clear Lake (Lake County)	60	9,274	45,821.6	56	3,094	402.5	32,718.0	0.33	4.48
Coyote Lake	1	50	197.0	0	50	8.0	400.0	0.13	3.94
Diamond Valley Lake	39	2,989	8,671.6	61	2,193	224.0	16,096.0	0.21	3.35
Eastman Lake	20	1,045	2,203.0	29	458	140.0	3,278.5	0.32	2.09
Folsom Lake	7	768	1,999.7	0	282	56.0	2,256.0	0.29	2.68
Hensley Lake	6	337	599.6	2	158	45.0	1,202.0	0.27	1.71
Iron Gate Reservoir	3	170	350.6	1	92	25.0	1,136.0	0.15	2.01
Lake Almanor	3	242	701.4	0	104	25.5	892.0	0.29	2.82
Lake Amador	2	140	337.2	6	34	12.0	408.0	0.34	2.41
Lake Berryessa	13	1,811	4,852.5	7	913	103.0	7,324.0	0.27	2.61
Lake Cachuma	14	634	1,395.2	4	195	96.0	1,784.0	0.36	2.25
Lake Camanche	2	84	219.2	1	48	17.0	416.0	0.21	2.62
Lake Casitas	7	497	1,426.6	0	253	56.0	2,024.0	0.25	2.87
Lake Castaic	27	1,813	4,182.8	30	924	158.0	6,502.0	0.27	2.38
Lake Don Pedro	33	3,742	8,233.2	36	1,495	234.5	12,033.0	0.39	2.23
Lake El Capitan	31	2,246	5,933.6	34	1,038	232.0	8,016.0	0.30	2.51
Lake Hodges	14	1,423	3,400.5	8	519	110.5	4,067.0	0.38	2.41
Lake Isabella	17	704	2,059.9	11	380	110.0	2,526.0	0.28	3.00
Lake Kaweah	25	1,268	2,627.8	20	737	171.0	5,231.5	0.25	2.13
Lake McClure	41	6,563	8,470.7	57	1,769	317.0	14,196.0	0.43	1.79
Lake Nacimiento	16	1,890	2,907.3	2	660	128.0	5,392.0	0.36	1.52
Lake New Melones	5	462	958.8	8	173	41.0	1,408.0	0.34	2.36
Lake Oroville	32	4,726	9,675.4	39	1,832	255.0	15,404.3	0.30	2.12
Lake Pardee	1	128	99.3	128	101	8.0	808.0	0.16	0.78
Lake Perris	5	237	694.5	1	130	40.0	1,040.0	0.22	2.98
Lake Pillsbury	1	80	260.9	1	60	8.5	510.0	0.16	3.26
Lake Piru	32	1,824	5,155.6	22	827	136.0	5,642.0	0.34	2.93

Water Name	Contest Days	Total Fish Count	Total Fish Weight	Total Fish Reported Dead	Number of Competitors	Total Contest Hours	Total Hours Effort	Mean Catch Per Hour	Mean Weight Per Fish
Lake San Antonio	16	823	1,977.0	0	349	104.0	2,944.0	0.28	2.33
Lake Santa Margarita	21	1,398	4,242.8	16	692	133.0	5,749.0	0.52	2.96
Lake Shasta	18	4,343	6,731.4	26	750	143.0	10,907.0	0.38	1.61
Lake Skinner	1	27	73.9	0	15	7.0	105.0	0.26	2.74
Lake Sonoma	4	342	798.6	0	160	35.0	1,346.0	0.27	2.22
Lake Success	14	970	1,902.6	15	474	94.5	3,453.0	0.28	1.99
Lake Sutherland	1	55	119.0	1	21	6.0	126.0	0.44	2.16
Lake Tulloch	1	68	128.7	0	24	8.0	192.0	0.35	1.89
Lopez Lake	10	713	1,735.2	6	286	68.0	2,320.0	0.33	2.40
Lower Otay Lake	12	951	2,374.8	14	451	82.0	3,272.0	0.29	2.56
Millerton Lake	21	1,763	2,508.7	24	706	165.0	5,769.0	0.32	1.44
New Hogan Lake	1	34	71.7	0	15	8.0	120.0	0.28	2.11
Pine Flat Lake	21	1,449	1,955.5	13	587	160.5	4,626.0	0.33	1.39
Pyramid Lake	13	855	1,738.0	4	445	104.0	3,560.0	0.26	2.03
Ruth Lake	2	154	396.0	7	74	18.0	666.0	0.23	2.59
Sacramento - San Joaquin Delta	102	14,398	37,277.1	54	5,492	747.5	46,219.5	0.30	2.63
Silverwood Lake	3	78	181.7	0	54	24.0	432.0	0.17	2.57
Trinity Lake	1	51	124.8	0	23	8.0	184.0	0.28	2.45
Statewide Totals	727	73,991	177,420.5	745	29,305	5,132.0	246,008.8	0.32	2.47

Appendix 3

SUMMARY OF 2012 FISHING CONTEST REPORTS
BY INDIVIDUAL WATER

“ANNUAL” TYPE CONTESTS

Water Name	Contest Days	Total Fish Count	Total Fish Weight	Total Fish Reported Dead	Number of Competitors	Total Contest Hours	Total Hours Effort	Mean Catch Per Hour	Mean Weight Per Fish
Anderson Lake	2	105	151.5	0	42	16.5	346.0	0.30	1.50
Antelope Lake	3	90	192.4	0	52	25.0	438.0	0.21	2.06
Big Bear Lake (San Bernardino County)	2	75	200.6	1	34	12.0	204.0	0.35	2.28
Big Lake	1	21	77.3	0	13	8.0	104.0	0.20	3.68
Black Butte Reservoir	3	128	259.9	2	39	18.0	378.0	0.34	1.96
Bullards Bar Reservoir	21	257	542.1	0	235	144.5	1,877.0	0.15	2.17
Butt Valley Reservoir	1	35	73.5	0	14	8.0	112.0	0.31	2.10
Camp Far West	6	186	284.8	0	81	39.0	642.0	0.31	1.56
Castaic Lagoon	4	162	337.4	0	76	28.0	533.0	0.27	2.20
Clear Lake (Lake County)	116	3,689	12,456.8	67	1,176	776.3	12,760.0	0.29	3.34
Colorado River	2	70	175.3	3	15	8.0	120.0	0.58	2.50
Diamond Valley Lake	22	856	2,107.5	17	331	164.0	2,613.0	0.34	2.43
East Park Reservoir	1	25	39.4	1	18	8.0	144.0	0.17	1.58
Folsom Lake	10	313	467.0	104	139	74.8	1,146.4	0.29	2.00
Hogan Lake	3	131	221.0	3	57	22.0	404.0	0.32	1.74
Iron Gate Reservoir	14	181	359.6	1	58	79.0	604.0	0.33	1.89
Irvine Lake	2	97	190.0	1	33	12.0	198.0	0.53	1.99
Lake Almanor	18	608	1,493.2	12	238	143.0	2,269.0	0.27	2.38
Lake Amador	7	272	588.4	4	91	52.0	752.0	0.35	2.10
Lake Berryessa	37	1,392	3,107.4	7	547	288.7	4,729.6	0.28	2.31
Lake Britton	8	242	489.4	0	77	43.0	652.0	0.44	2.00
Lake Cachuma	13	2,468	1,213.8	13	206	108.5	1,972.5	2.06	1.62
Lake Camanche	18	435	898.7	1	268	140.7	2,473.4	0.17	2.16
Lake Casitas	11	111	260.8	0	74	100.8	652.5	0.15	2.06
Lake Castaic	5	119	284.7	1	64	40.0	512.0	0.25	2.70
Lake Don Pedro	38	2,228	4,075.1	68	734	296.5	6,525.0	0.36	1.84
Lake El Capitan	16	429	932.5	1	231	135.0	1,906.0	0.23	2.23
Lake Elsinore	2	27	60.3	0	33	16.0	264.0	0.10	2.28
Lake Havasu	9	450	1,378.3	10	72	68.0	1,032.0	0.43	2.80
Lake Hodges	9	291	604.8	1	138	69.0	1,047.0	0.31	2.14
Lake McClure	10	341	646.9	0	132	79.0	1,047.0	0.33	1.86
Lake Mendocino	1	23	38.4	0	10	8.0	80.0	0.29	1.67
Lake Murray	5	108	193.7	0	65	42.0	502.0	0.21	1.68
Lake Nacimiento	26	1,516	2,182.6	16	450	195.5	3,922.0	0.41	1.41
Lake New Melones	19	921	1,625.6	10	327	146.5	2,682.5	0.35	1.75
Lake Oroville	27	798	1,497.4	0	292	204.0	2,659.0	0.30	1.89
Lake Pardee	14	393	757.9	9	224	102.6	1,671.2	0.27	1.90

SUMMARY OF 2012 FISHING CONTEST REPORTS BY INDIVIDUAL WATER

Annual Type Contests

Water Name	Contest Days	Total Fish Count	Total Fish Weight	Total Fish Reported Dead	Number of Competitors	Total Contest Hours	Total Hours Effort	Mean Catch Per Hour	Mean Weight Per Fish
Lake Perris	8	157	357.5	17	243	68.5	2,034.0	0.11	2.53
Lake Piru	19	689	1,664.4	11	311	133.0	2,379.0	0.31	2.70
Lake San Antonio	13	678	1,462.9	16	239	103.5	2,057.5	0.32	2.15
Lake Santa Margarita	19	731	2,082.0	7	328	123.5	2,758.5	0.32	2.72
Lake Shasta	79	3,488	5,575.4	22	978	593.0	9,091.0	0.40	1.63
Lake Shastina	2	68	140.0	0	23	19.0	437.0	0.16	2.06
Lake Skinner	4	95	192.2	0	32	32.0	306.0	0.33	2.12
Lake Sonoma	12	521	1,075.9	2	179	94.5	1,542.0	0.37	2.06
Lake Sutherland	6	146	285.0	3	69	52.0	557.0	0.26	1.95
Lake Tulloch	16	439	884.7	5	356	78.0	1,648.0	0.26	1.94
Lopez Lake	11	587	1,286.2	3	227	107.5	2,237.0	0.26	2.10
Los Banos Reservoir	1	10	17.4	0	8	7.0	56.0	0.18	1.74
Lower Otay Lake	11	228	454.0	2	130	83.0	980.0	0.26	2.44
Martinez Reservoir	2	67	87.9	0	17	14.0	238.0	0.28	1.31
Morena Reservoir	2	40	43.0	2	22	12.0	264.0	0.15	1.08
New Hogan Lake	5	182	370.2	1	75	38.0	558.0	0.33	2.06
O'Neill Forebay	1	16	37.4	0	10	10.0	100.0	0.16	2.34
Parker Dam Reservoir	2	28	41.5	0	8	8.0	64.0	0.44	1.48
Pine Flat Lake	12	509	645.5	10	163	89.0	1,278.0	0.43	1.29
Pyramid Lake	15	615	1,244.4	7	263	110.0	1,902.0	0.33	1.98
Rollins Reservoir	1	37	43.8	1	28	8.0	224.0	0.17	1.18
Sacramento - San Joaquin Delta	145	6,988	15,743.2	76	2,537	1,071.4	20,311.7	0.37	2.21
Salt Springs Reservoir	2	82	189.5	0	34	12.0	204.0	0.42	2.28
San Antonio Creek (San Bernardino County)	1	35	64.7	0	28	8.5	238.0	0.15	1.85
Silverwood Lake	3	58	155.3	2	29	25.0	242.0	0.24	2.95
Stony Gorge Reservoir	1	26	34.8	4	20	6.0	120.0	0.22	1.34
Thermalito Afterbay	5	120	243.6	0	60	35.0	567.0	0.22	2.02
Topaz Lake	1	11	24.1	0	10	8.0	80.0	0.14	2.19
Trinity Lake	16	394	833.5	3	129	111.0	1,364.0	0.29	2.03

Water Name	Contest Days	Total Fish Count	Total Fish Weight	Total Fish Reported Dead	Number of Competitors	Total Contest Hours	Total Hours Effort	Mean Catch Per Hour	Mean Weight Per Fish
Union Valley Reservoir	1	25	34.9	0	18	9.4	169.7	0.15	1.39
Upper Blue Lake	1	61	121.0	3	31	6.0	186.0	0.33	1.98
Walker Lake	2	74	151.5	0	46	15.5	332.0	0.23	2.02
Whiskeytown Lake	5	135	299.1	0	69	41.0	574.0	0.22	2.21
Statewide Totals	930	36,933	76,352.2	550	13,406	6,854.0	115,073.5	0.34	2.18