

NARRATIVE REPORT  
SALTON SEA MIGRATORY WATERFOWL REFUGE  
CALIPATRIA, CALIFORNIA

February, March, April and May, 1939

Submitted by  
LUTHER C. GOLDMAN  
Refuge Manager

Note: As the author was stationed at the Salton Sea Migratory Waterfowl Refuge in February, 1939, and then transferred to the Tule Lake Wildlife Refuge for the Summer months, the annual report for the fiscal year 1939 and the quarterly reports for the period February-June, 1939, are herein combined into one report.

TABLE OF CONTENTS

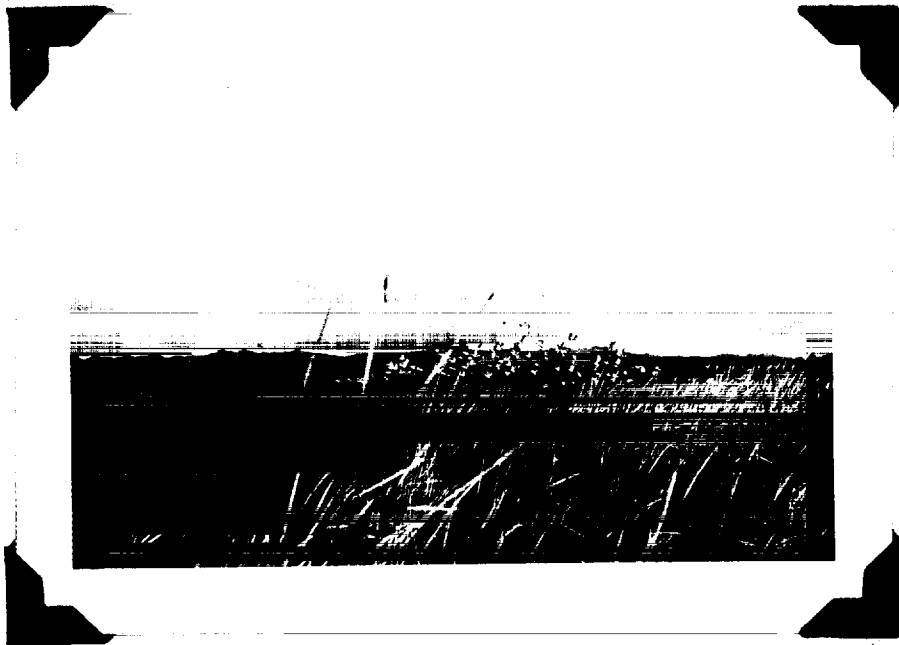
	<u>Page</u>
I. GENERAL WEATHER CONDITIONS - - - - -	1
II. WILDLIFE	
1. Waterfowl - - - - -	2
2. Other Birds - - - - -	3
3. Predators - - - - -	4
4. Mammals - - - - -	5
III. REFUGE DEVELOPMENT AND MAINTENANCE - - - - -	6

\*\*\*\*\*  
 \*\*\*\*\*  
 \*\*\*\*\*  
 \*\*\*\*\*  
 \*

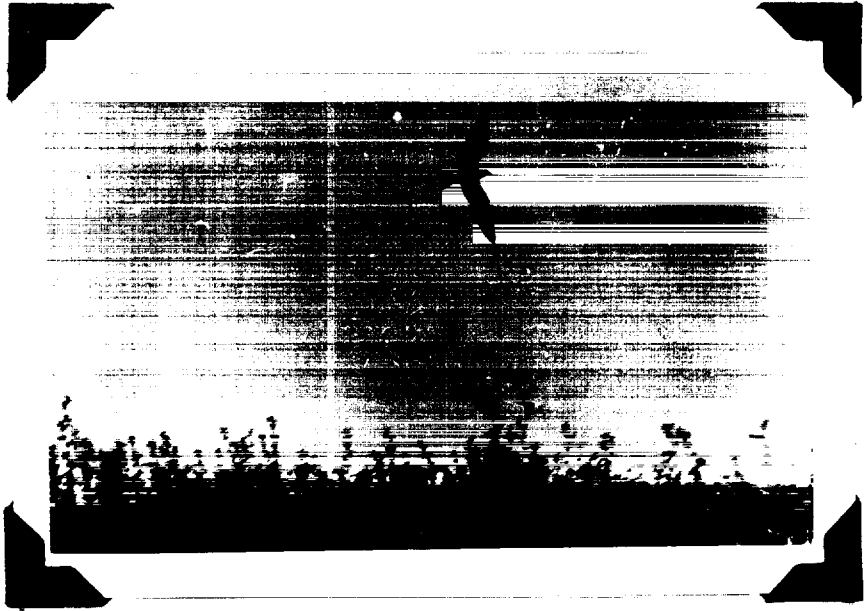
Geese feeding in Alamo River delta.



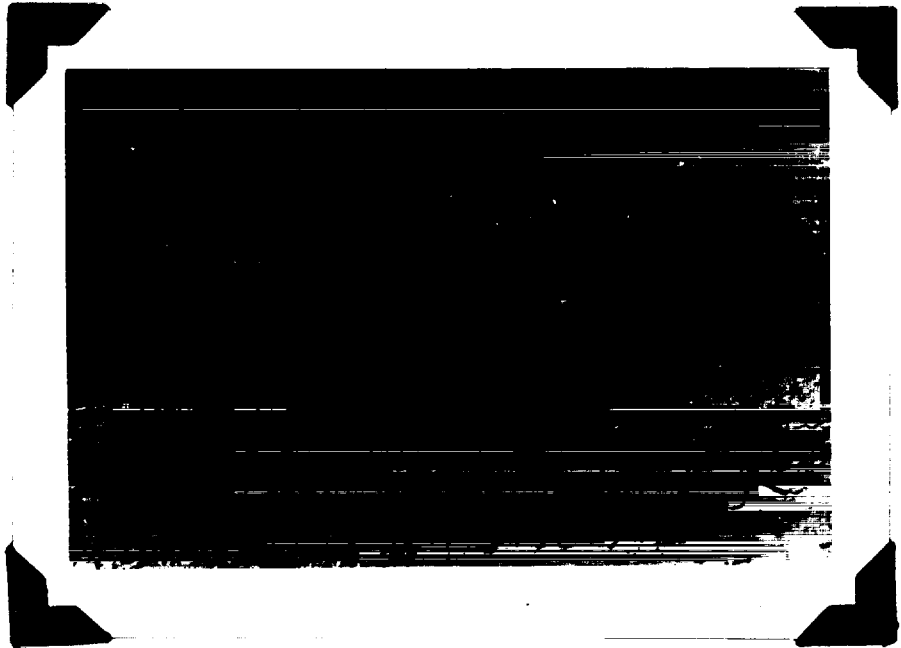
Snow geese rising.  
Pictures taken in February, 1939.



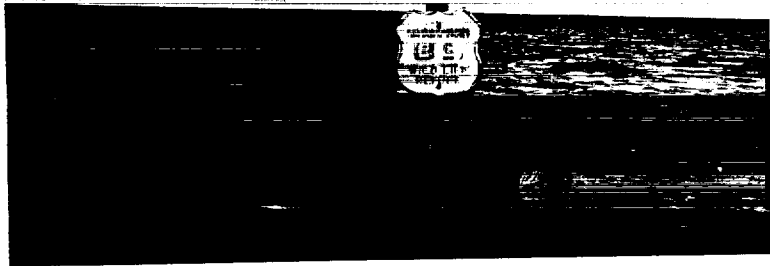
Snow geese in the delta of the Alamo River.  
Picture taken in February, 1939.



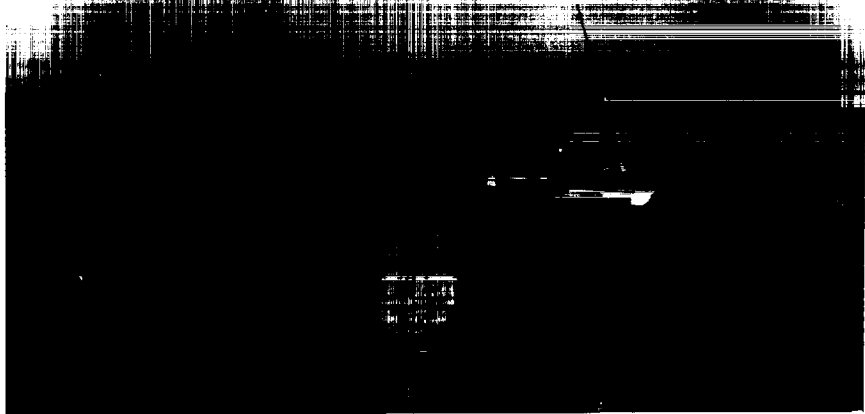
Black tern in flight. About 500 black terns were feeding on grasshoppers in an open field about 7 miles from the refuge. Picture taken May 7, 1939.



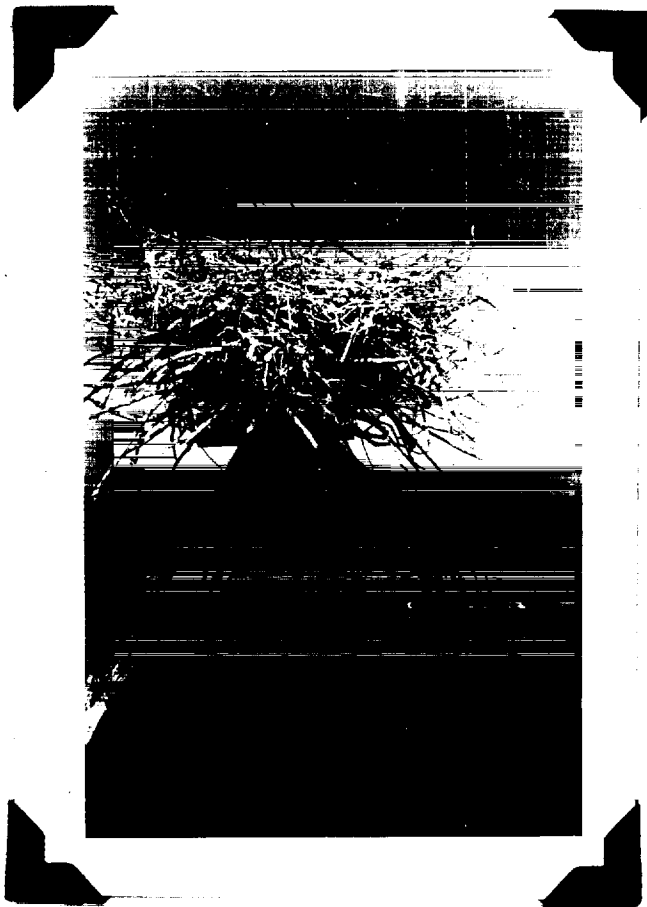
Ringnecked ducks in the Trifoleum Drain. Picture taken April 20, 1939.



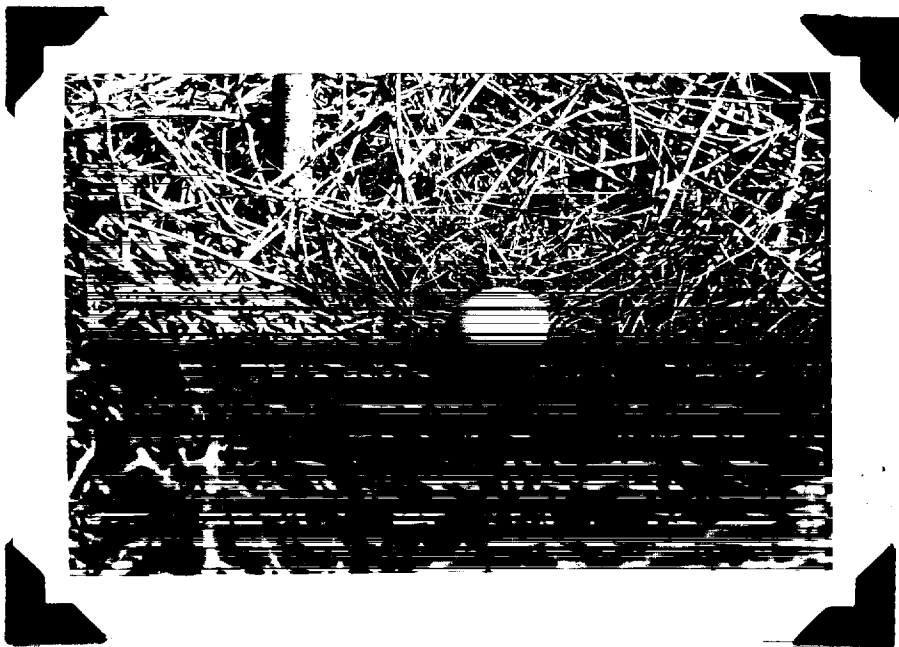
Looking east from the northeast corner of the refuge.



Some boating is done on the Salton Sea but the water is considered dangerous because of its readiness to roughen up in the winds that sometimes come up with little warning.  
Pictures taken March 30, 1939.



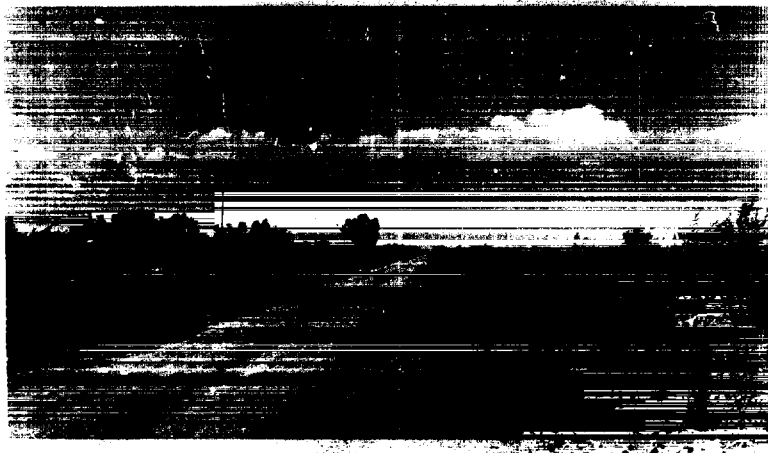
Nest of great blue heron, one-half mile off shore.  
Contains one egg. For close-up see picture below.



Great blue heron nest. Pictures taken April 18, 1939.



Delta of the Alamo River.



One of the few roads leading to a point near the refuge.  
Vegetation along road is arrow-weed.





Boy Scouts on bird study. Standing in dead  
tamarisk. Picture taken February 11, 1939.



Fresh water on Section #2, T. 12 S., R. 12 E. One of the  
rare Yuma rails was seen in this marsh. Picture taken  
May 4, 1939

Gull-billed terns' nests in close proximity. Picture taken May 7, 1939.



Eggs and nests of gull-billed terns. Sometimes a few sticks are used for nest material. Picture taken May 7, 1939.