

White Sturgeon Tag Returns in Relation to River Flow

Department of Fish and Wildlife

December 11, 2015

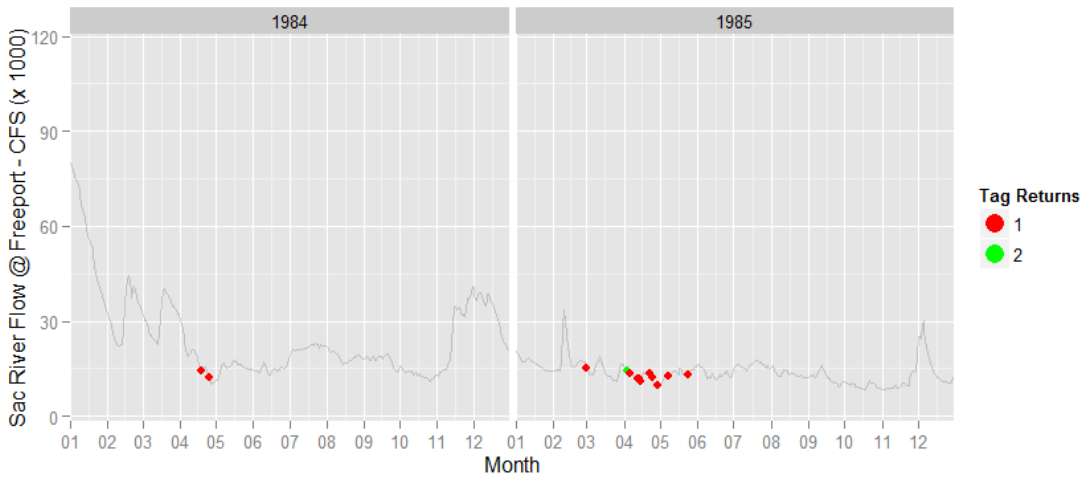
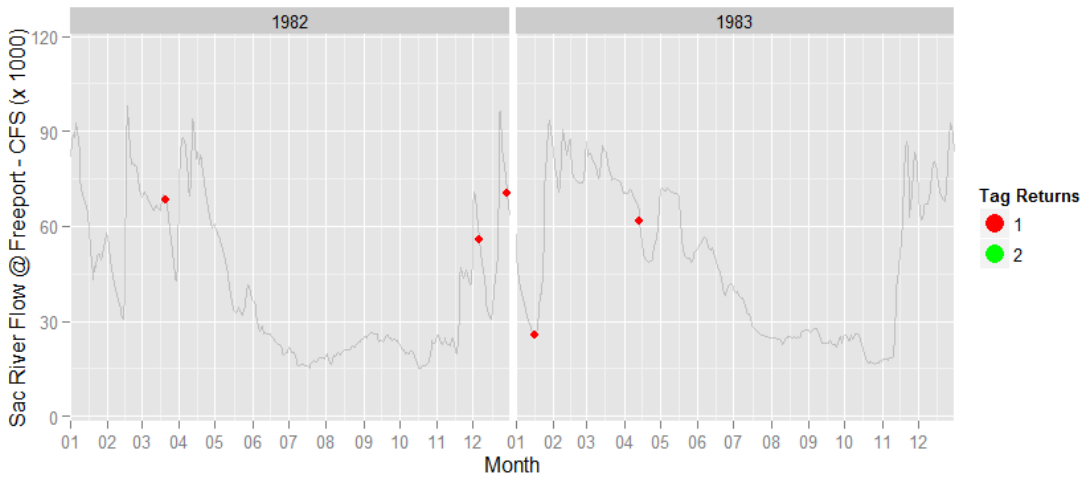
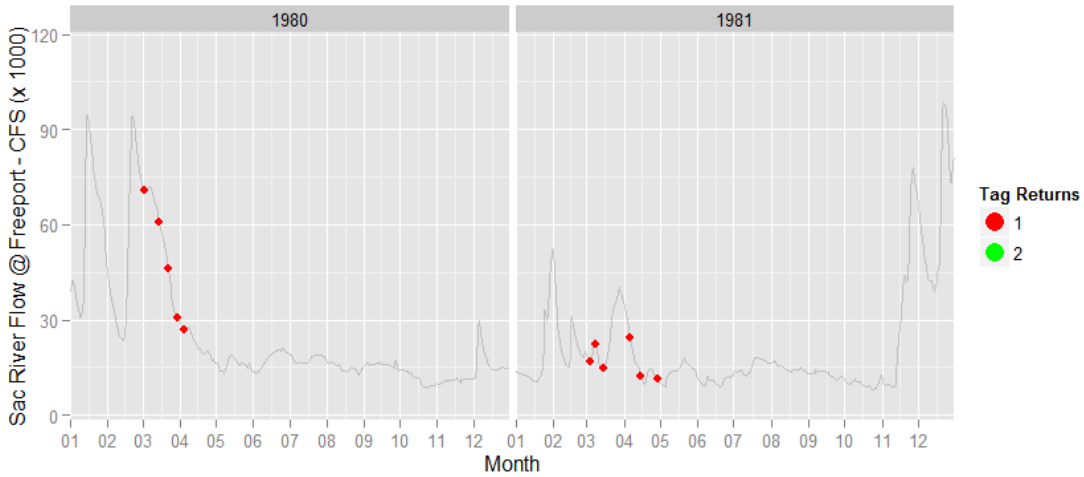
The plots below display Sacramento River hydrograph and dates anglers fishing on the Sacramento River recaptured a tagged White Sturgeon (a tag return). Hydrograph data (in cubic feet per second, CFS) are from [Freeport](#) for the period January 1980 to September 2014. Tag return data are for the same period and are represented as points on the graph, color-coded to indicate number of tags for that day.

For this purpose, only tag returns from anglers fishing on the Sacramento River (in the reach from Courtland to Feather River and in the reach above Feather River) were used. Lengths for these tagged White Sturgeon were between 102 and 193 centimeters total length (or ~ 40 to 76 inches total length), as recorded during tagging.

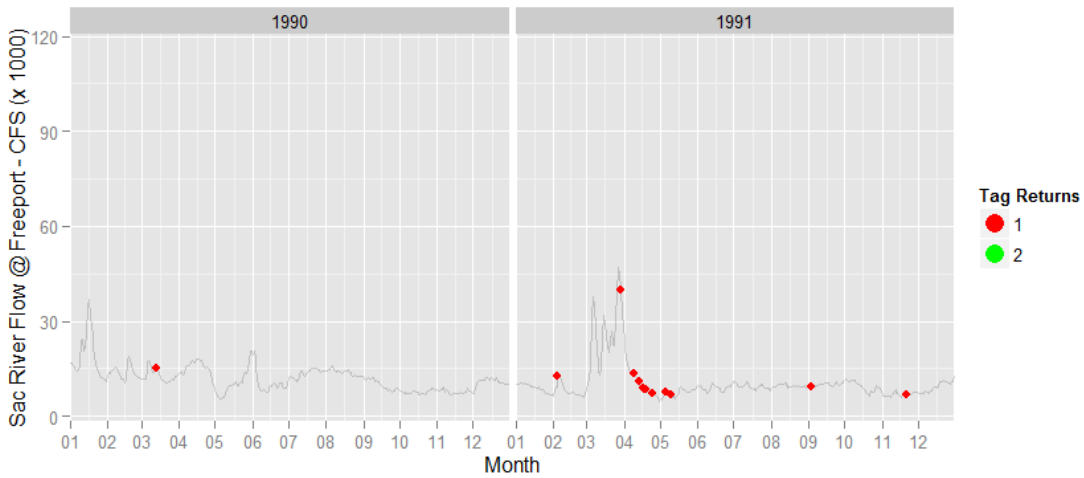
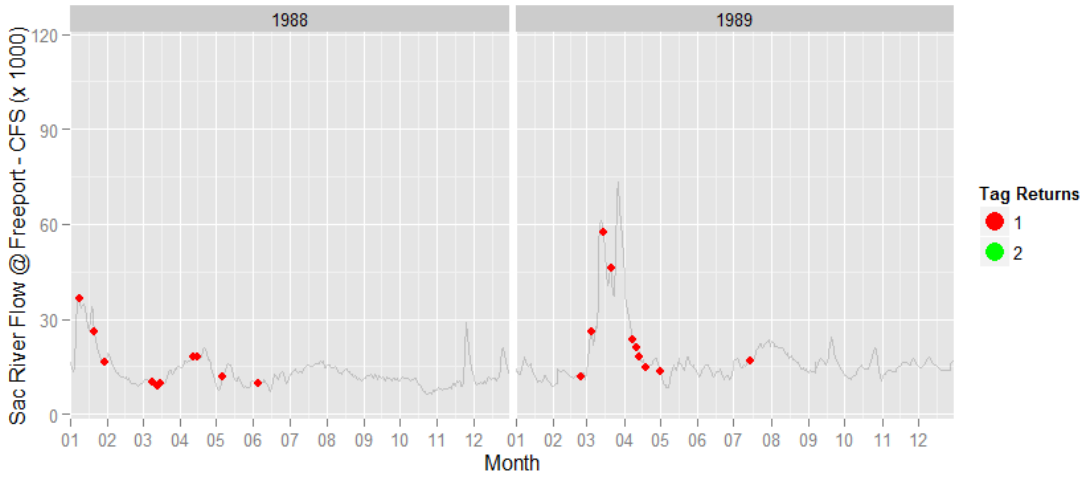
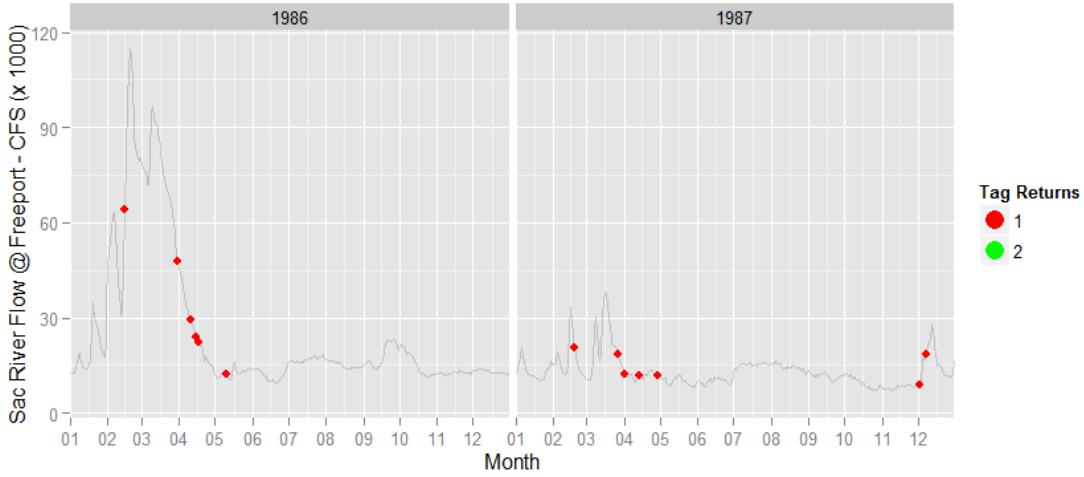
For further information on the Department's sturgeon mark-recapture (tagging) program, click [here](#).

Plots for anglers fishing the Sacramento River: Courtland to Feather River and above Feather River

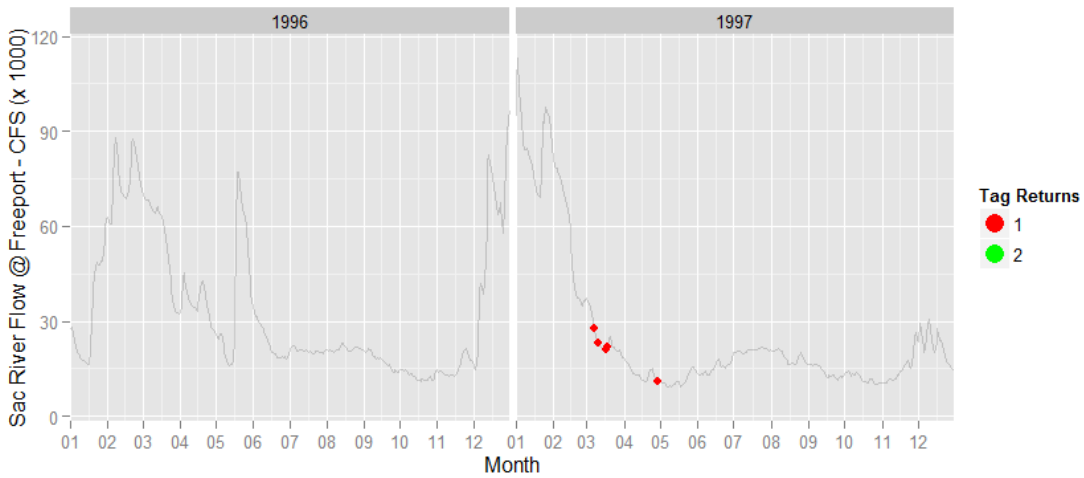
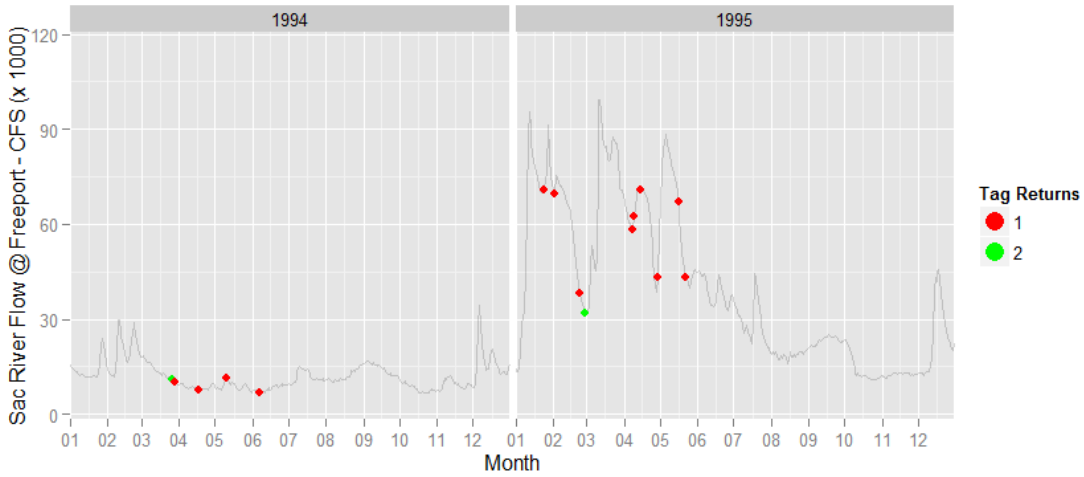
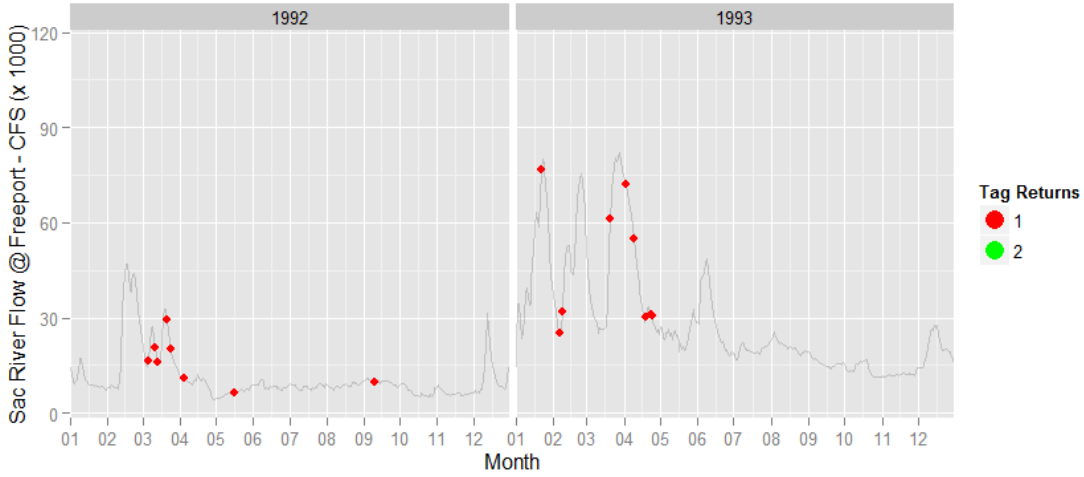
White Sturgeon Tag Returns in Relation to River Flow



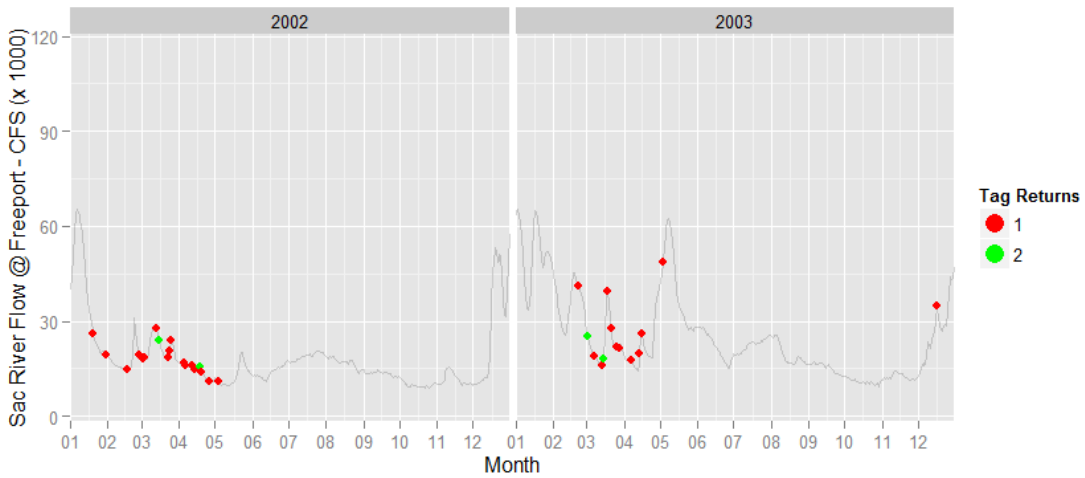
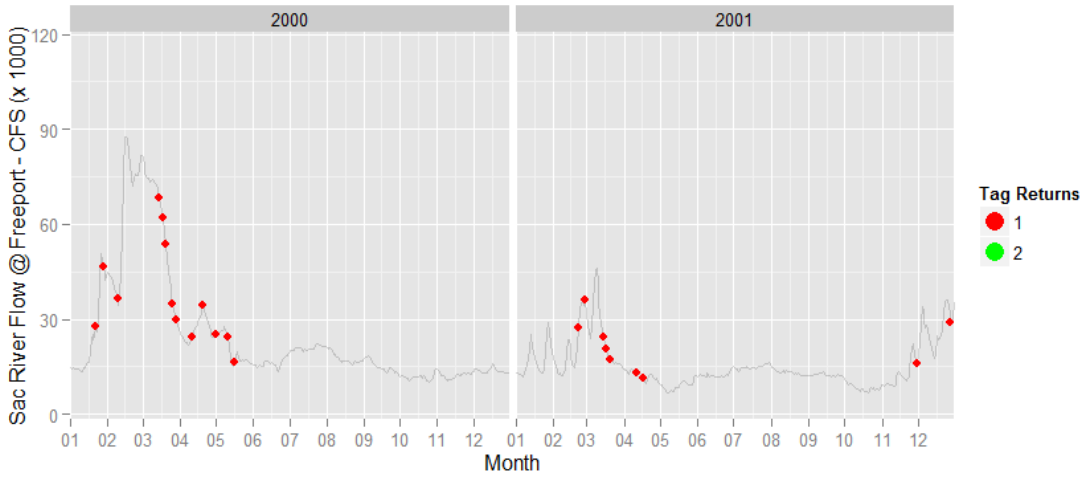
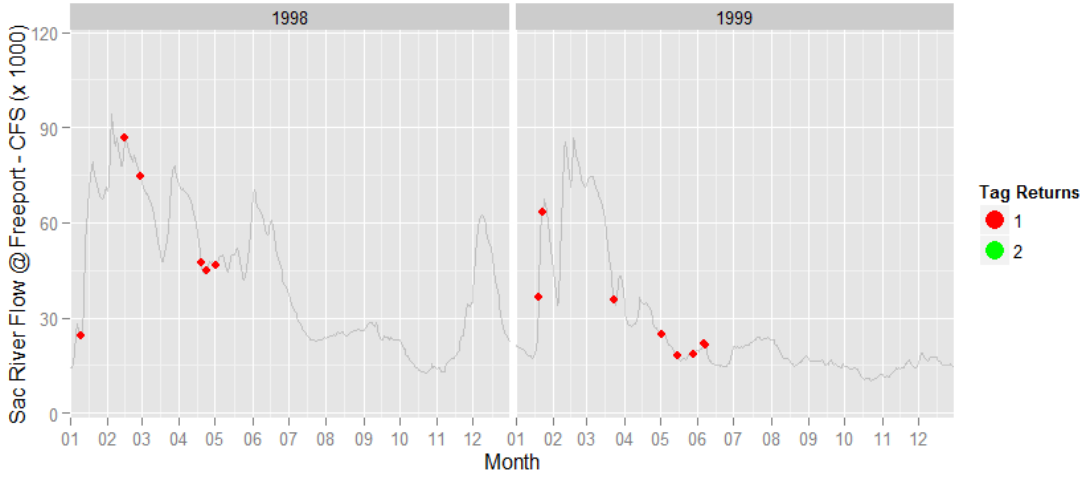
White Sturgeon Tag Returns in Relation to River Flow



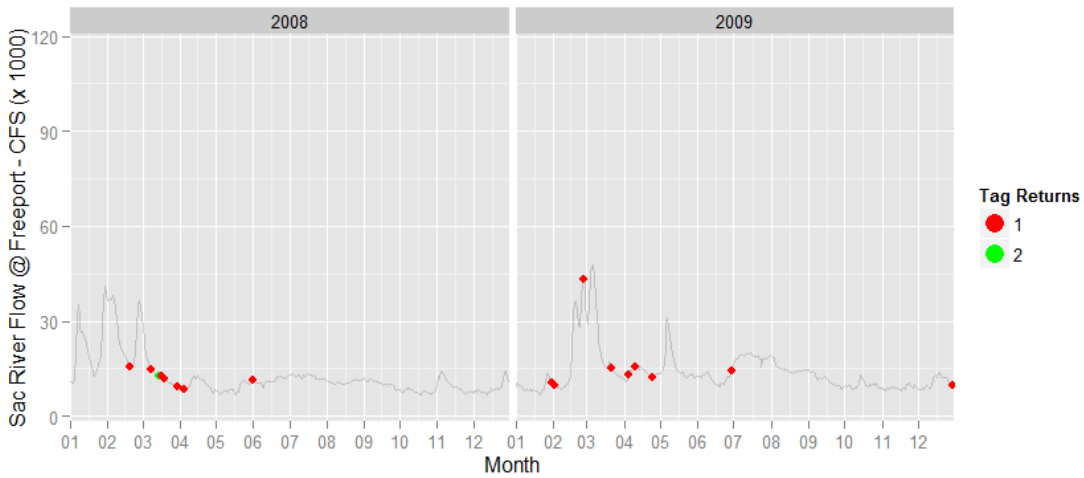
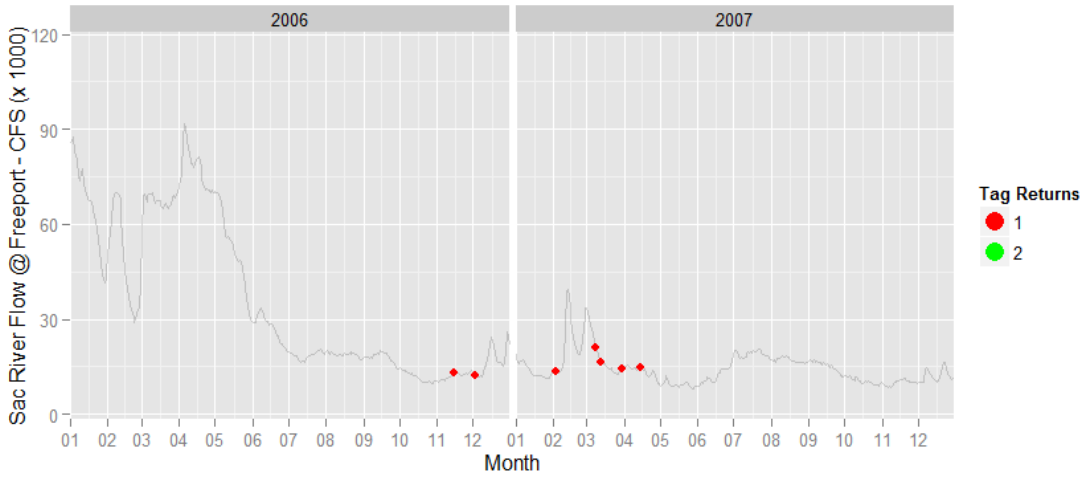
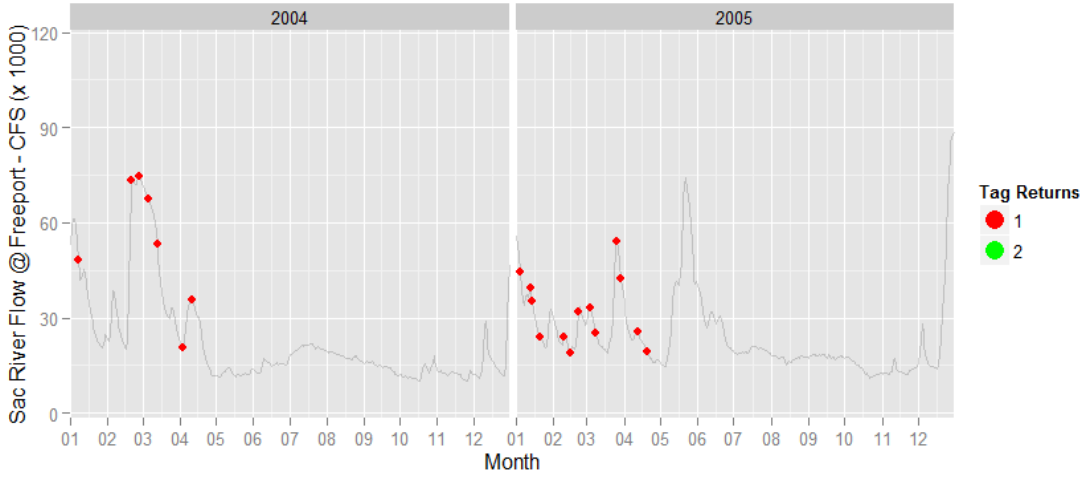
White Sturgeon Tag Returns in Relation to River Flow



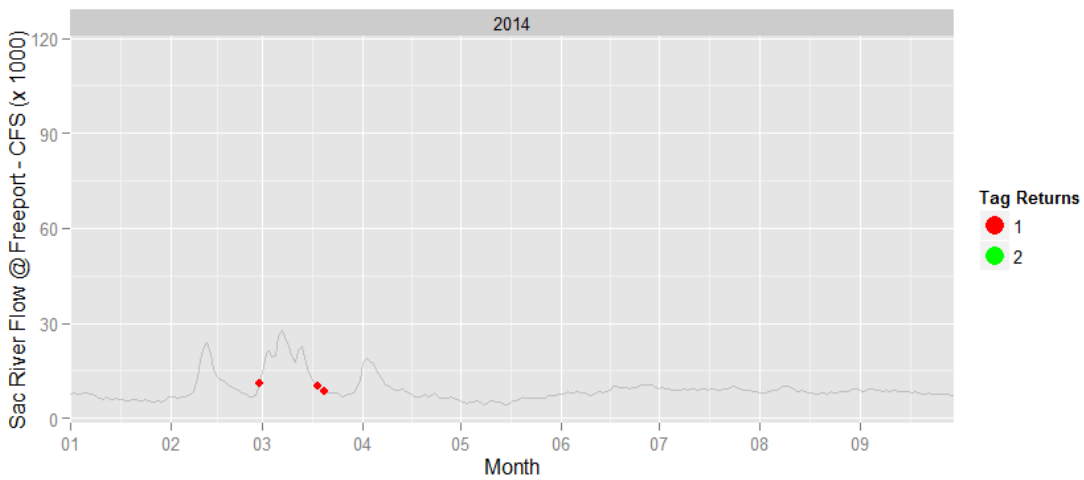
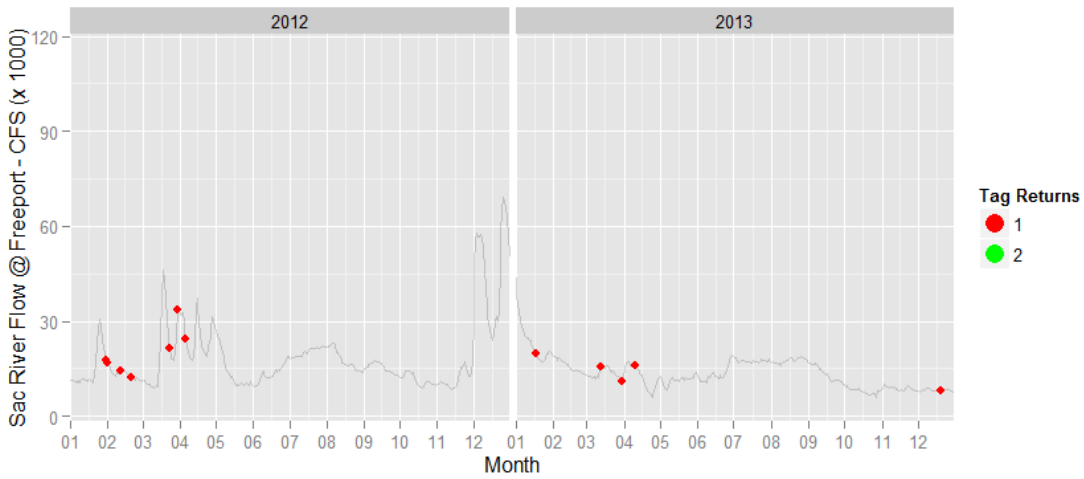
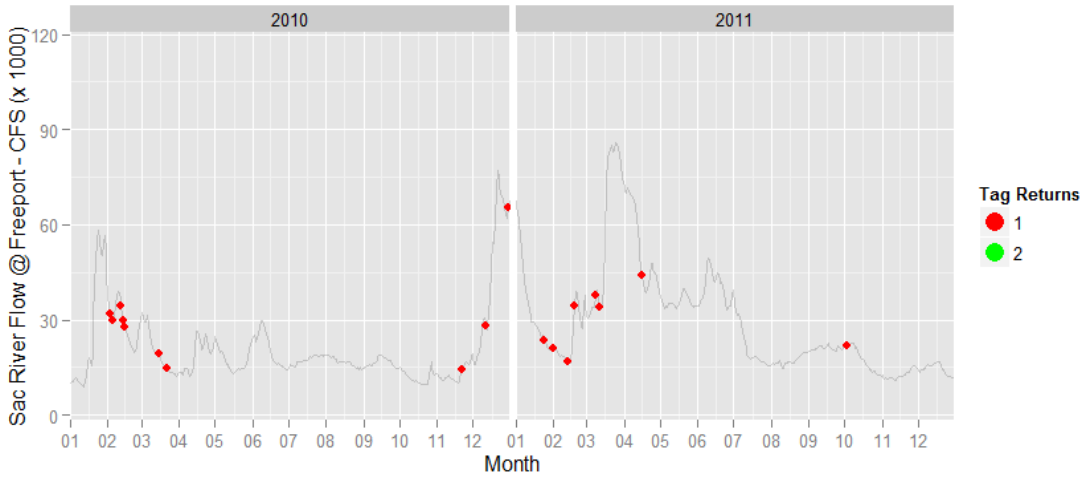
White Sturgeon Tag Returns in Relation to River Flow



White Sturgeon Tag Returns in Relation to River Flow



White Sturgeon Tag Returns in Relation to River Flow



End of report