

Southside County Water District

Subject

Date

October 31, 1957

Locality

Squaw Hollow Creek

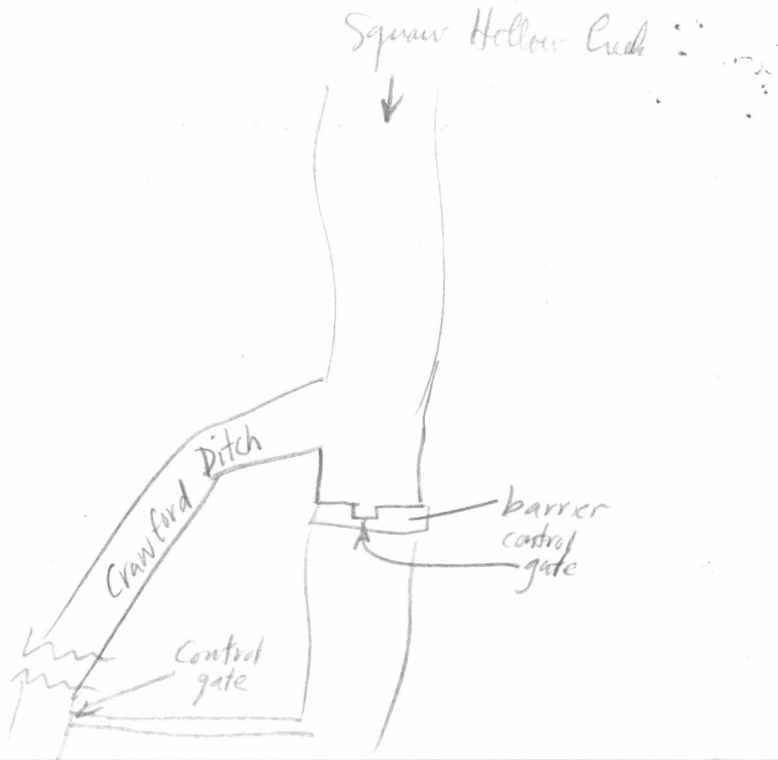
60968 3-52 17,500 SPO

1. Upstream from Summit School: 2 miles
No flow, small, probably no fishery, private land
2. Downstream from Summit School to Crawford Ditch.
 - a. Flow intermittent, no fish seen, private land
 - b. Dry most of distance to Crawford Ditch
 - c. Crawford Ditch flowing between 3 and 5 cfs as it enters Squaw Hollow Creek.
 - d. Ditch runs year around
 - e. EID poisons ditch every spring and kills all fish.
 - f. No water in Squaw Hollow Creek until February.
 - g. RT GS, suckers and minnows in ditch and 3 miles of Squaw Hollow Creek.

Notes made by

AJC

Mr. Fausel
Kramer



Southside County Water District

Subject

Date October 31, 1957

Locality Squaw Hollow Creek

60968 3-52 17,500 SPO

h. Trout and minnows in seepage pools about Crawford Ditch
56°F in seepage pool @ 12 noon

3. Oak Hill Road area

a. Flow from Crawford Ditch in this stretch of stream

b. Entire flow redirected about 150 feet below Oak Hill Road Crossing.

c. Insignificant amount of seepage

d. About 1/2 of flow redirected to Sq. Hollow Creek

55°F @ 3:15 pm

Notes made by

ALC

