

February 20, 2014
Wildlife Conservation Board Meeting
10:00 AM, State Capitol, Room 112
Sacramento, California 95814



Funding Status

Informational

The following funding status depicts Capital Outlay appropriations by year of appropriation and by fund source and fund number.

(a) 2013-14 Wildlife Restoration Fund, (0447)

Budget Act	\$1,000,000.00
Previous Board Allocations	<u>-1,000,000.00</u>
Unallocated Balance	\$0.00

February 2014 Board Meeting Allocation	0.00
Total Project Development	<u>0.00</u>
Projected Unallocated Balance	\$0.00

(b) 2013-14 Habitat Conservation Fund, (0262)

Budget Act	\$20,663,000.00
Previous Board Allocations	<u>-5,402,936.00</u>
Unallocated Balance	\$15,260,064.00

February 2014 Board Meeting Allocation	-779,264.00
Total Project Development	<u>-8,378,800.00</u>
Projected Unallocated Balance	\$6,102,000.00

(c) 2012-13 Habitat Conservation Fund, (0262)

Budget Act	\$20,663,000.00
Previous Board Allocations	<u>-1,518,717.00</u>
Unallocated Balance	\$19,144,283.00

February 2014 Board Meeting Allocation	0.00
Total Project Development	<u>-1,650,000.00</u>
Projected Unallocated Balance	\$17,494,283.00

(d) 2011-12 Habitat Conservation Fund, (0262)

Budget Act	\$20,663,000.00
Previous Board Allocations	<u>-10,280,242.00</u>
Unallocated Balance	\$10,382,758.00

February 2014 Board Meeting Allocation	-515,000.00
Total Project Development	<u>-6,387,000.00</u>
Projected Unallocated Balance	\$3,480,758.00

(e)	2010-11 Habitat Conservation Fund, (0262)	
	Budget Act	\$20,668,000.00
	Previous Board Allocations	<u>-14,839,355.00</u>
	Unallocated Balance	\$5,828,645.00
	February 2014 Board Meeting Allocation	-290,000.00
	Total Project Development	<u>-2,000,000.00</u>
	Projected Unallocated Balance	\$3,538,645.00
(f)	2009-10 Habitat Conservation Fund, (0262) (2013-14 Reappropriation)	
	Budget Act	\$20,668,000.00
	Previous Board Allocations	<u>-18,325,750.82</u>
	Unallocated Balance	\$2,342,249.18
	February 2014 Board Meeting Allocation	-812,588.00
	Total Project Development	<u>-1,470,000.00</u>
	Projected Unallocated Balance	\$59,661.18
(g)	2008-09 Habitat Conservation Fund, (0262) (2012-13 Reappropriation)	
	Budget Act	\$20,668,000.00
	Previous Board Allocations	<u>-15,647,079.00</u>
	Unallocated Balance	\$5,020,921.00
	February 2014 Board Meeting Allocation	0.00
	Total Project Development	<u>0.00</u>
	Projected Unallocated Balance	\$5,020,921.00
(h)	2007-08 Habitat Conservation Fund, (0262) (2011-12 Reappropriation)	
	Budget Act	\$20,674,000.00
	Previous Board Allocations	<u>-18,826,933.45</u>
	Unallocated Balance	\$1,847,066.55
	February 2014 Board Meeting Allocation	-920,398.00
	Total Project Development	<u>-652,001.00</u>
	Projected Unallocated Balance	\$274,667.55

- (i) 2006-07 Habitat Conservation Fund, (0262)
(2013-14 Reappropriation)

Budget Act	\$20,699,000.00
Previous Board Allocations	<u>-19,797,399.32</u>
Unallocated Balance	\$901,600.68

February 2014 Board Meeting Allocation	0.00
Total Project Development	<u>-901,600.68</u>
Projected Unallocated Balance	\$0.00

- (j) 2004-05 Habitat Conservation Fund, (0262)

Budget Act	\$20,577,000.00
Previous Board Allocations	<u>-19,962,032.89</u>
Unallocated Balance	\$614,967.11

February 2014 Board Meeting Allocation	0.00
Total Project Development	<u>0.00</u>
Projected Unallocated Balance	\$614,967.11

- (k) 1999-00 Safe Neighborhood Parks, Clean Water, Clean Air, and
Coastal Protection Bond Fund, (0005)

Continuously Appropriated [Sec. 5096.350 (a)(1), (2), (4) & (7)]	\$36,100,000.00
Previous Board Allocations	<u>-31,224,215.01</u>
Unallocated Balance	\$4,875,784.99

February 2014 Board Meeting Allocation	0.00
Total Project Development	<u>-64,444.00</u>
Projected Unallocated Balance	\$4,811,340.99

- (l) 2001-02 California Clean Water, Clean Air, Safe Neighborhood Parks and
Coastal Protection Fund, (6029)

Continuously Appropriated (Section 5096.650)	\$273,000,000.00
Previous Board Allocations	<u>-237,238,256.94</u>
Unallocated Balance	\$35,761,743.06

February 2014 Board Meeting Allocation	-2,035,000.00
Total Project Development	<u>-13,451,000.00</u>
Projected Unallocated Balance	\$20,275,743.06

- (m) 2002-03 Water Security, Clean Drinking Water, Coastal and Beach Protection Fund of 2002, (6031)

Continuously Appropriated (Sections 79565 and 79572), including Chapter 81, Statutes of 2005	\$814,350,000.00
2003-04 Budget Act Transfer to HCF from Section 79565	-21,000,000.00
2004-05 Budget Act Transfer to HCF from Section 79565	-21,000,000.00
2005-06 Budget Act Transfer to HCF from Section 79565	-4,000,000.00
2005-06 Budget Act Transfer to HCF from Section 79572	-3,100,000.00
2006-07 Budget Act Transfer to HCF from Section 79572	-17,688,000.00
2007-08 Budget Act Transfer to HCF from Section 79572	-5,150,000.00
2008-09 Budget Act Transfer to HCF from Section 79572	-1,000,000.00
Previous Board Allocations	<u>-674,051,919.23</u>
Unallocated Balance	\$67,360,080.77
February 2014 Board Meeting Allocation	-1,000,000.00
Total Project Development	<u>-22,032,943.00</u>
Projected Unallocated Balance	\$44,327,137.77

- (n) 2009-10 Safe Drinking Water, Water Quality and Supply, Flood Control, River and Coastal Protection Fund of 2006, (6051) (2013-14 Reappropriation)

Budget Act (San Joaquin River Conservancy Projects)	\$4,800,000.00
Previous Board Allocations	<u>-25,000.00</u>
Unallocated Balance	\$4,775,000.00
February 2014 Board Meeting Allocation	0.00
Total Project Development	<u>-4,775,000.00</u>
Projected Unallocated Balance	\$0.00

- (o) 2009-10 Safe Drinking Water, Water Quality and Supply, Flood Control, River and Coastal Protection Fund of 2006, (6051) (2013-14 Reappropriation)

Chapter 2, Statutes of 2009 (SB 8)	\$15,500,000.00
Previous Board Allocations	<u>-4,871,875.00</u>
Unallocated Balance	\$10,628,125.00
February 2014 Board Meeting Allocation	-3,124,200.00
Total Project Development	<u>-7,190,070.00</u>
Projected Unallocated Balance	\$313,855.00

- (t) 2006-07 Safe Drinking Water, Water Quality and Supply, Flood Control, River and Coastal Protection Fund of 2006, (6051)

Continuously Appropriated (Section 75055a)	\$164,700,000.00
Previous Board Allocations	<u>-86,356,697.96</u>
Unallocated Balance	\$78,343,302.04

February 2014 Board Meeting Allocation	0.00
<u>Total Project Development</u>	<u>-56,827,000.00</u>
Projected Unallocated Balance	\$21,516,302.04

Continuously Appropriated (Section 75055(b))	\$123,525,000.00
Previous Board Allocations	<u>-80,285,083.48</u>
Unallocated Balance	\$43,239,916.52

February 2014 Board Meeting Allocation	-4,590,000.00
<u>Total Project Development</u>	<u>-5,335,000.00</u>
Projected Unallocated Balance	\$33,314,916.52

RECAP OF FUND BALANCES

Wildlife Restoration Fund (a)	\$0.00
<u>Projected Unallocated Balance</u>	<u>\$0.00</u>

Habitat Conservation Fund (b), (c), (d), (e), (f), (g), (h), (i) and (j)	\$61,342,554.52
<u>Projected Unallocated Balance</u>	<u>\$36,585,902.84</u>

Safe Neighborhood Parks, Clean Water, Clean Air, and Coastal Protection Bond Fund (k)	\$4,875,784.99
<u>Projected Unallocated Balance</u>	<u>\$4,811,340.99</u>

California Clean Water, Clean Air, Safe Neighborhood Parks and Coastal Protection Bond Fund (l)	\$35,761,743.06
<u>Projected Unallocated Balance</u>	<u>\$20,275,743.06</u>

Water Security, Clean Drinking Water, Coastal and Beach Protection Fund of 2002 (m)	\$67,360,080.77
<u>Projected Unallocated Balance</u>	<u>\$44,327,137.77</u>

Safe Drinking Water, Water Quality and Supply, Flood Control, River and Coastal Protection Fund of 2006 (n), (o), (p), (q), (r),(s) and (t)	\$156,262,854.58
<u>Projected Unallocated Balance</u>	<u>\$57,440,316.58</u>

TOTAL – ALL FUNDS	\$325,603,017.92
<u>Projected Unallocated Balance</u>	<u>\$163,440,441.24</u>

RECAP OF NATURAL HERITAGE PRESERVATION TAX CREDIT ACT OF 2000

Chapter 113, Statutes of 2000 and Chapter 715, Statutes of 2004

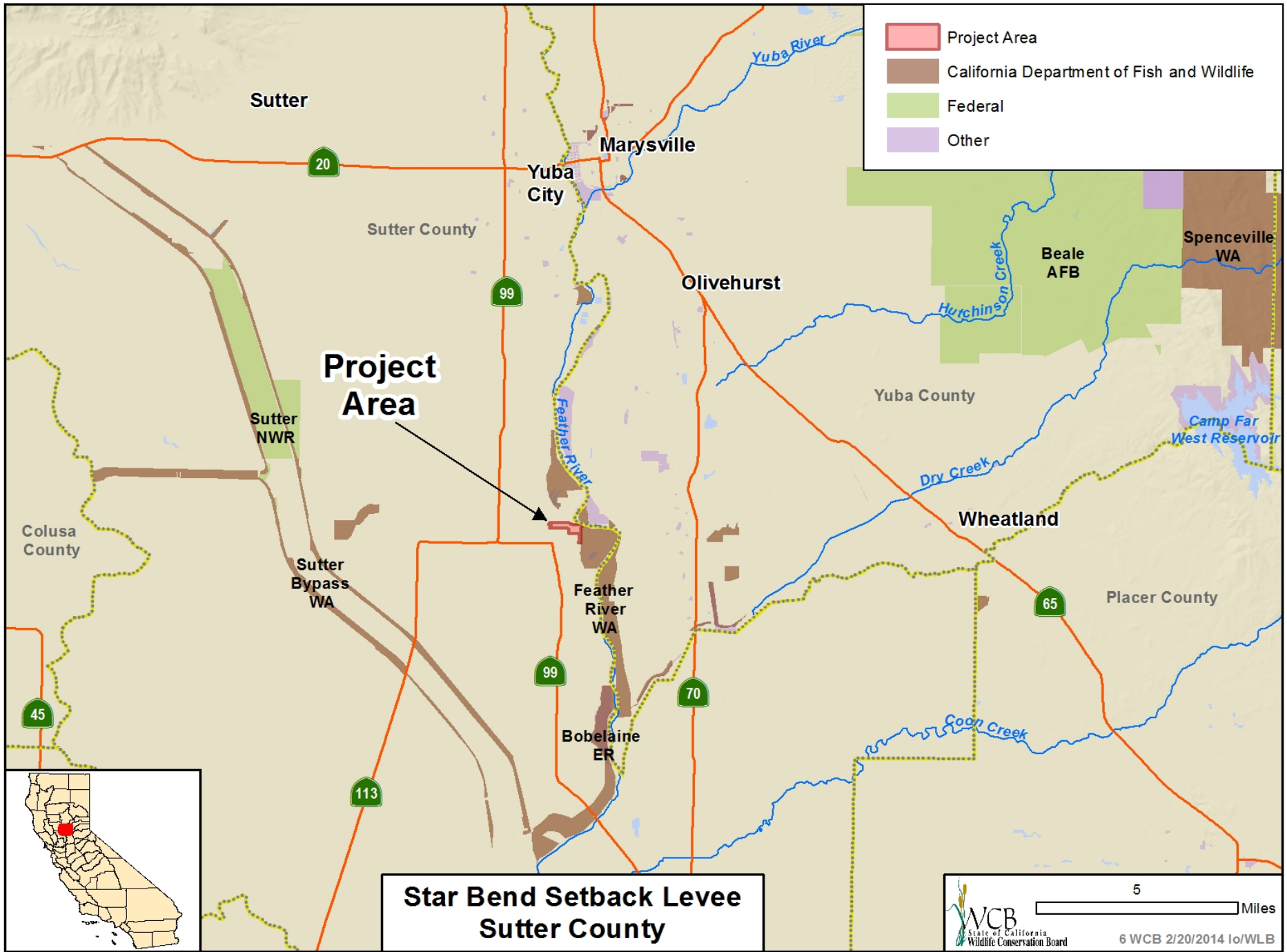
Tax credits awarded through June 30, 2008

\$48,598,734.00

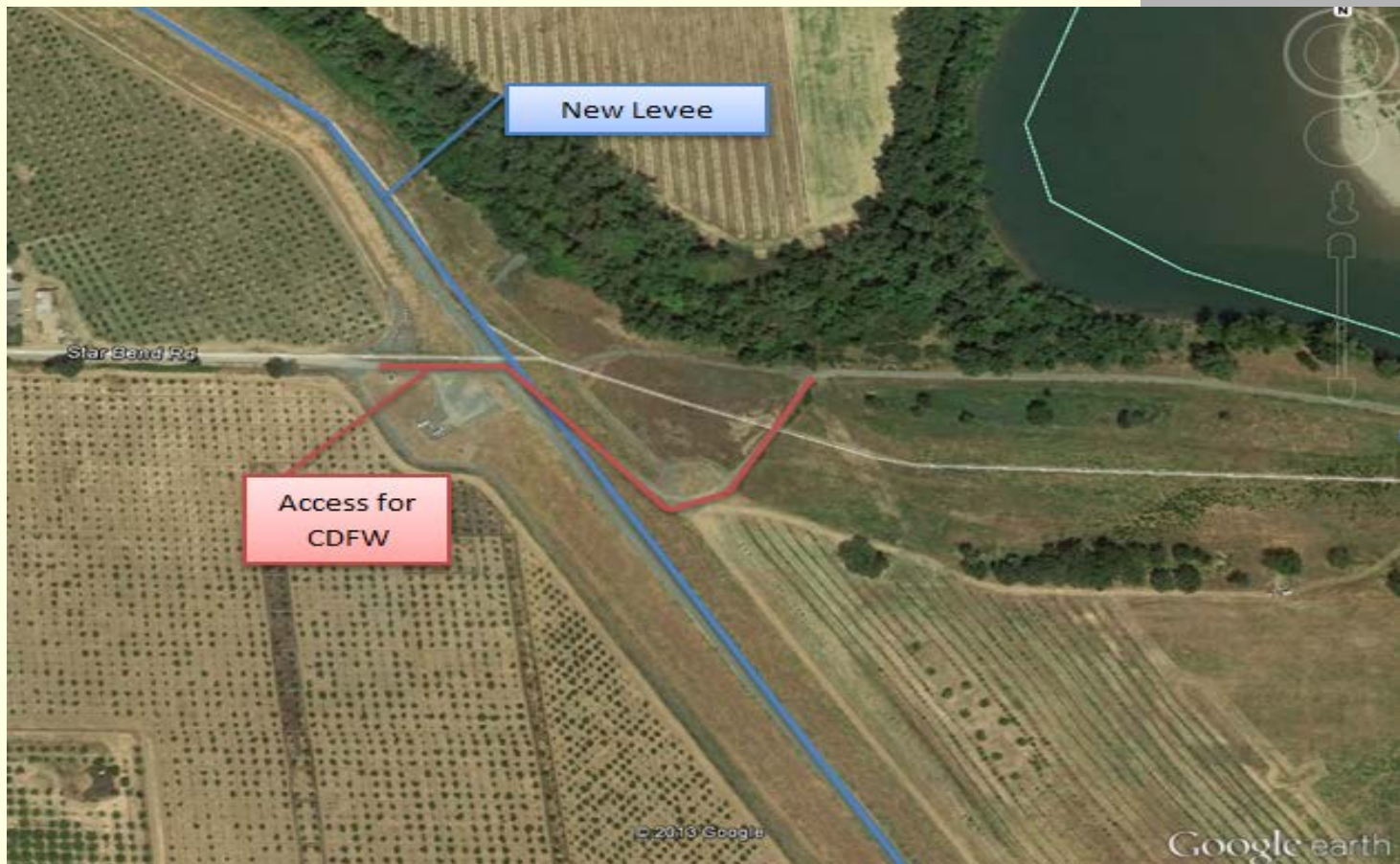
Chapter 220, Statutes of 2009 (effective January 1, 2010)

Tax credits awarded

\$0.00



#6. Star Bend Setback Levee



- Easement is approx. 0.22 acres, 9,583 sq feet and 1,358 linear feet

#6. Star Bend Setback Levee



- California Sycamore

#6. Star Bend Setback Levee



■ Valley Oak

#6. Star Bend Setback Levee

- Valley Elderberry Longhorn Beetle



#6. Star Bend Setback Levee



- Western portion of access easement looking west

#6. Star Bend Setback Levee



- Western portion of access easement looking east

#6. Star Bend Setback Levee



- Eastern portion of access easement looking south

#6. Star Bend Setback Levee

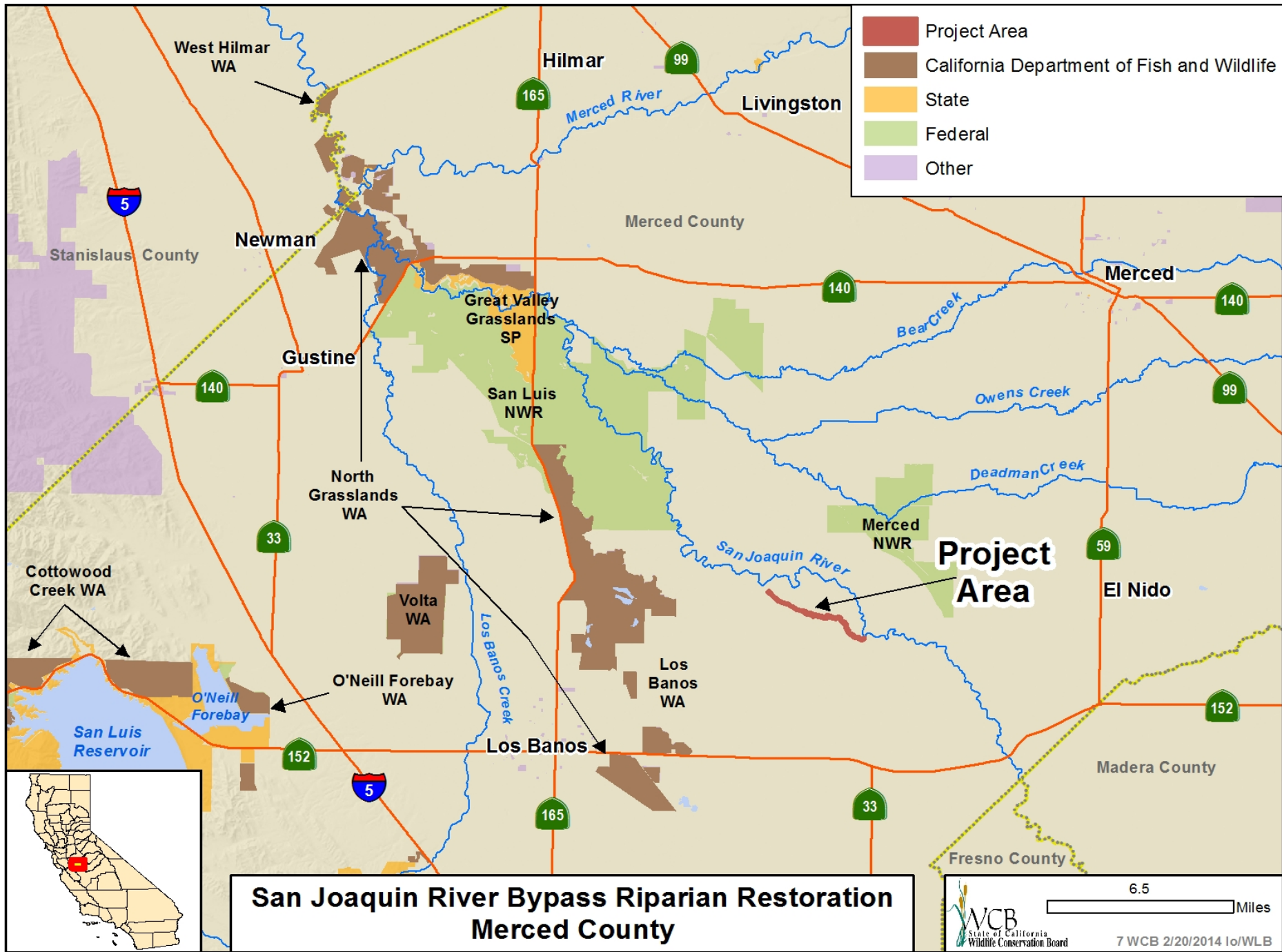


- Eastern portion of access easement looking north

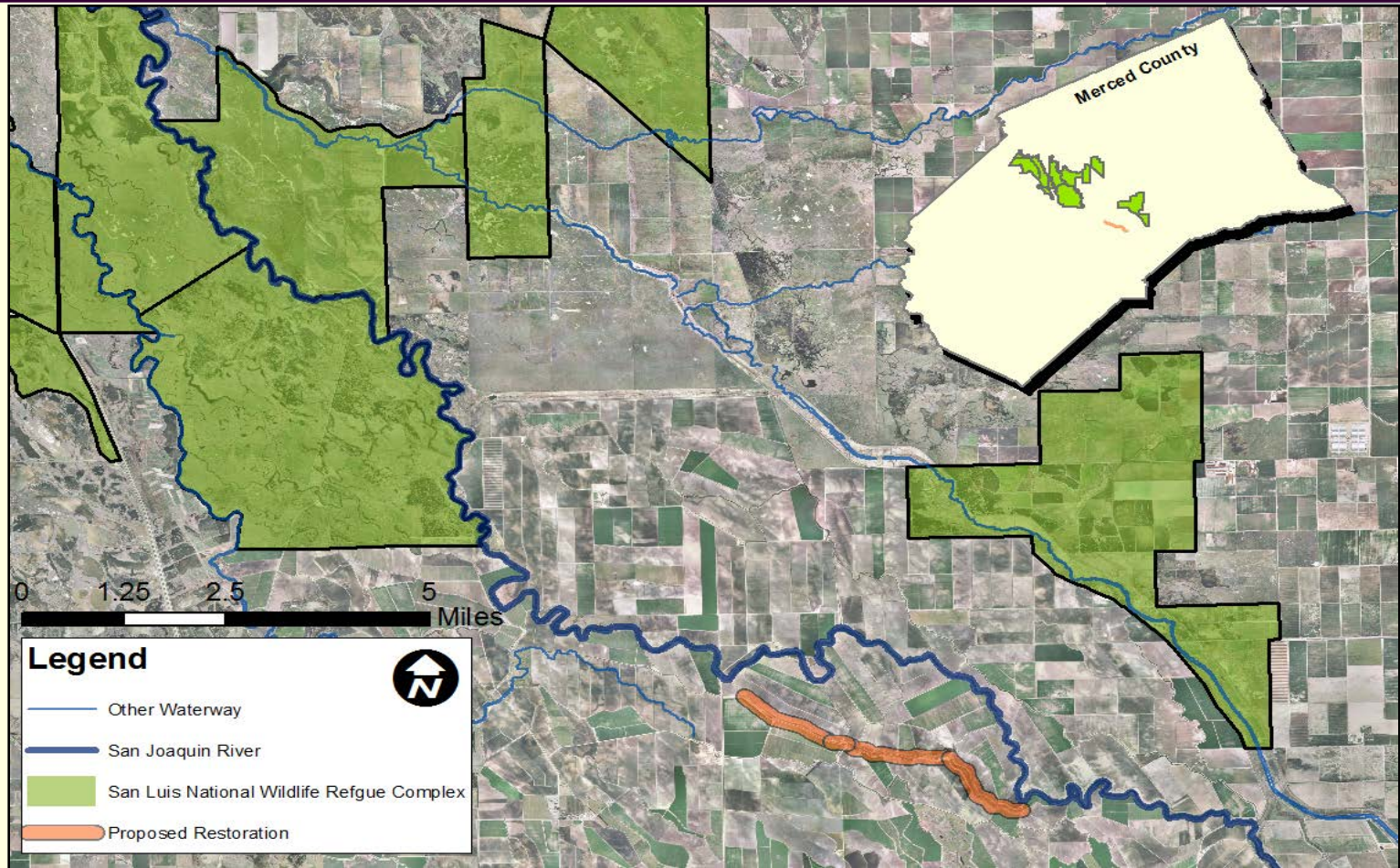
#6. Star Bend Setback Levee



- Eastern portion of access easement looking east at the tie-in to CDFW property

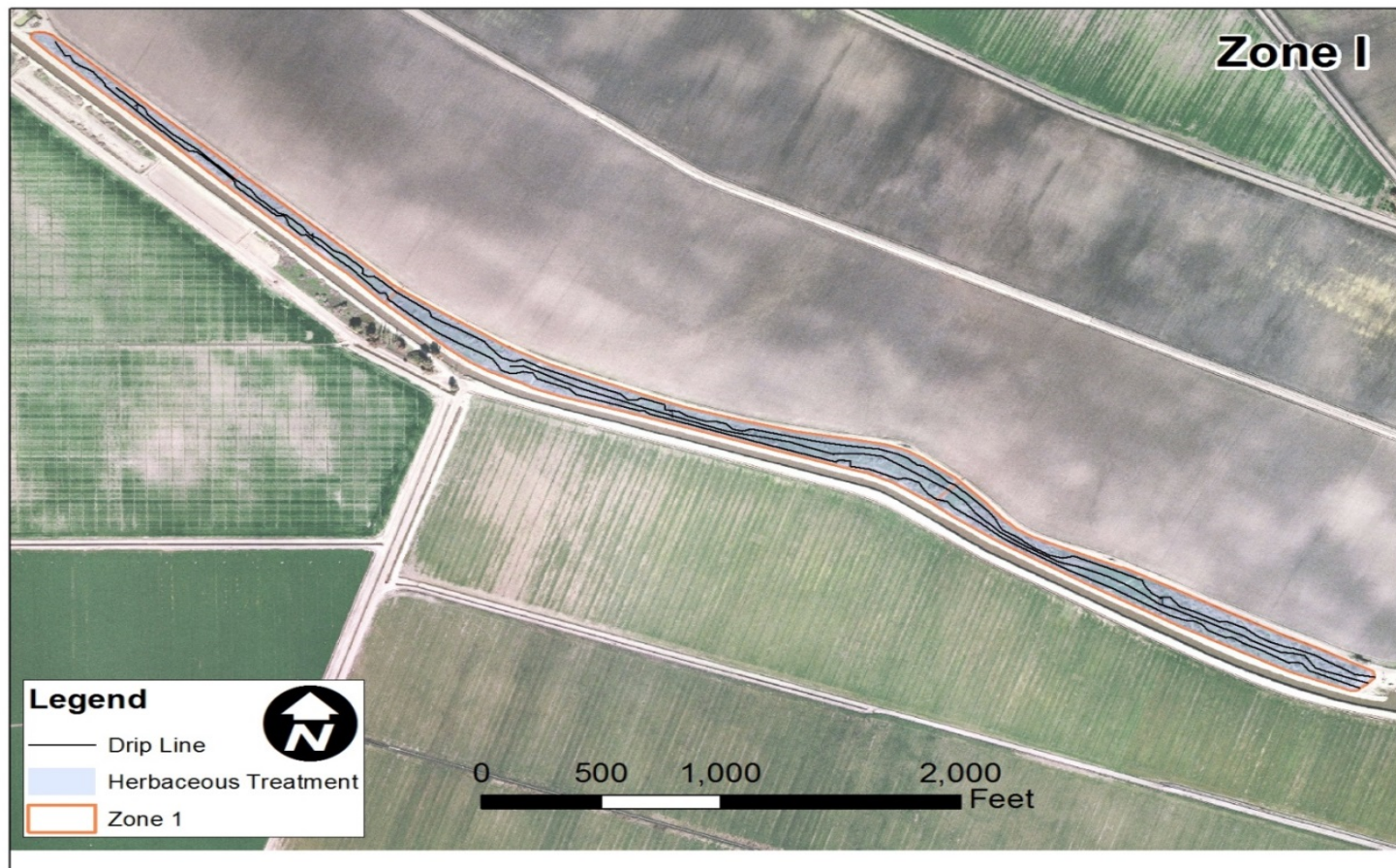


#7. San Joaquin River Bypass Riparian Restoration



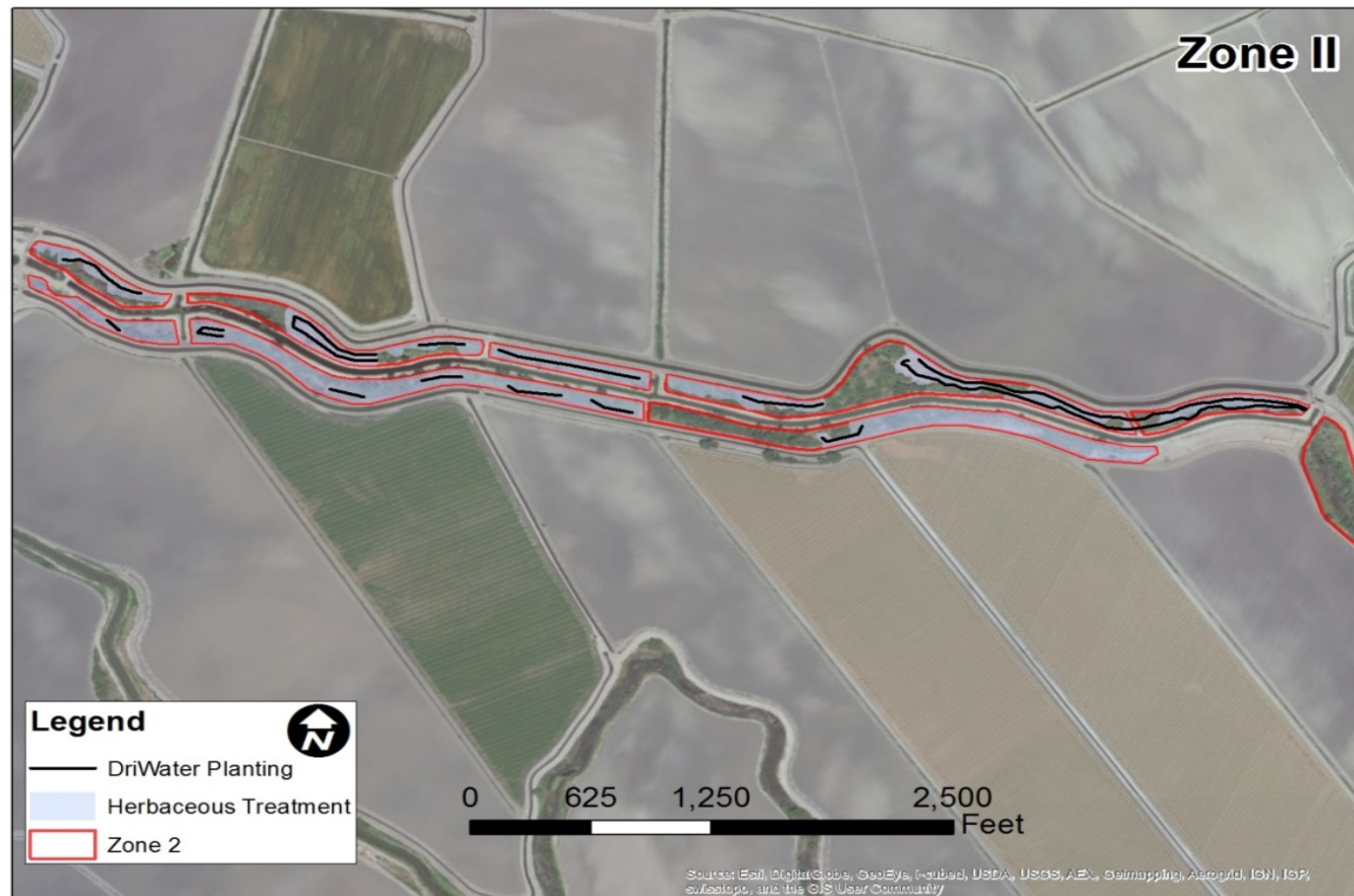
- Proposed Site in relation to San Joaquin River

#7. San Joaquin River Bypass Riparian Restoration



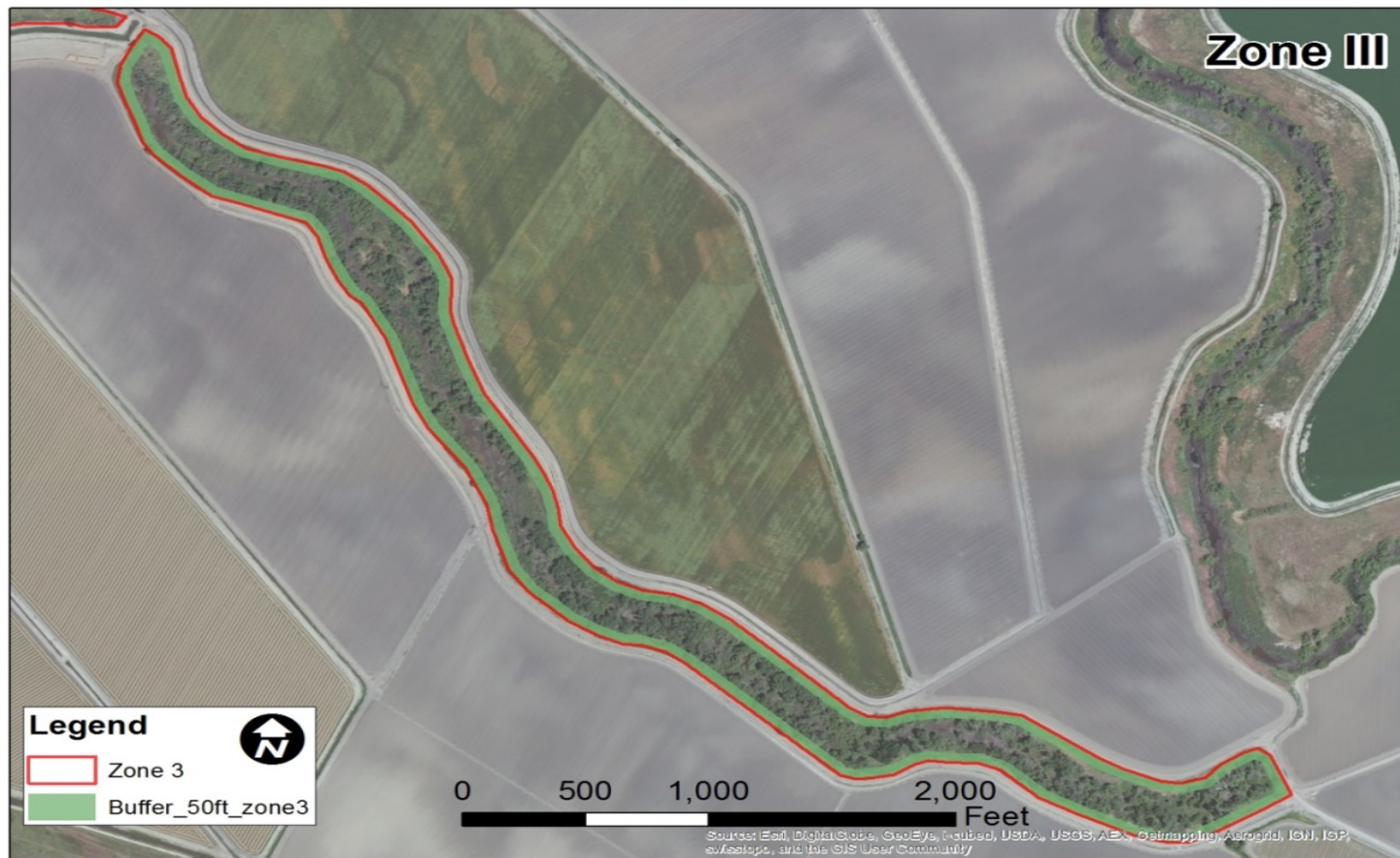
- Western section of project site – very little existing riparian habitat

#7. San Joaquin River Bypass Riparian Restoration



- Center section of project site-some remnant riparian habitat

#7. San Joaquin River Bypass Riparian Restoration



- Eastern section of project site-good to excellent riparian habitat; San Joaquin River upper right

#7. San Joaquin River Bypass Riparian Restoration



- Planned restoration site – Zone 1

#7. San Joaquin River Bypass Riparian Restoration



- Planned restoration site – Zone 1

#7. San Joaquin River Bypass Riparian Restoration



- Restoration Zone 1

#7. San Joaquin River Bypass Riparian Restoration



- Riparian scrub at restoration site – Zone 2

#7. San Joaquin River Bypass Riparian Restoration



■ Restoration Site – Zone 3

#7. San Joaquin River Bypass Riparian Restoration



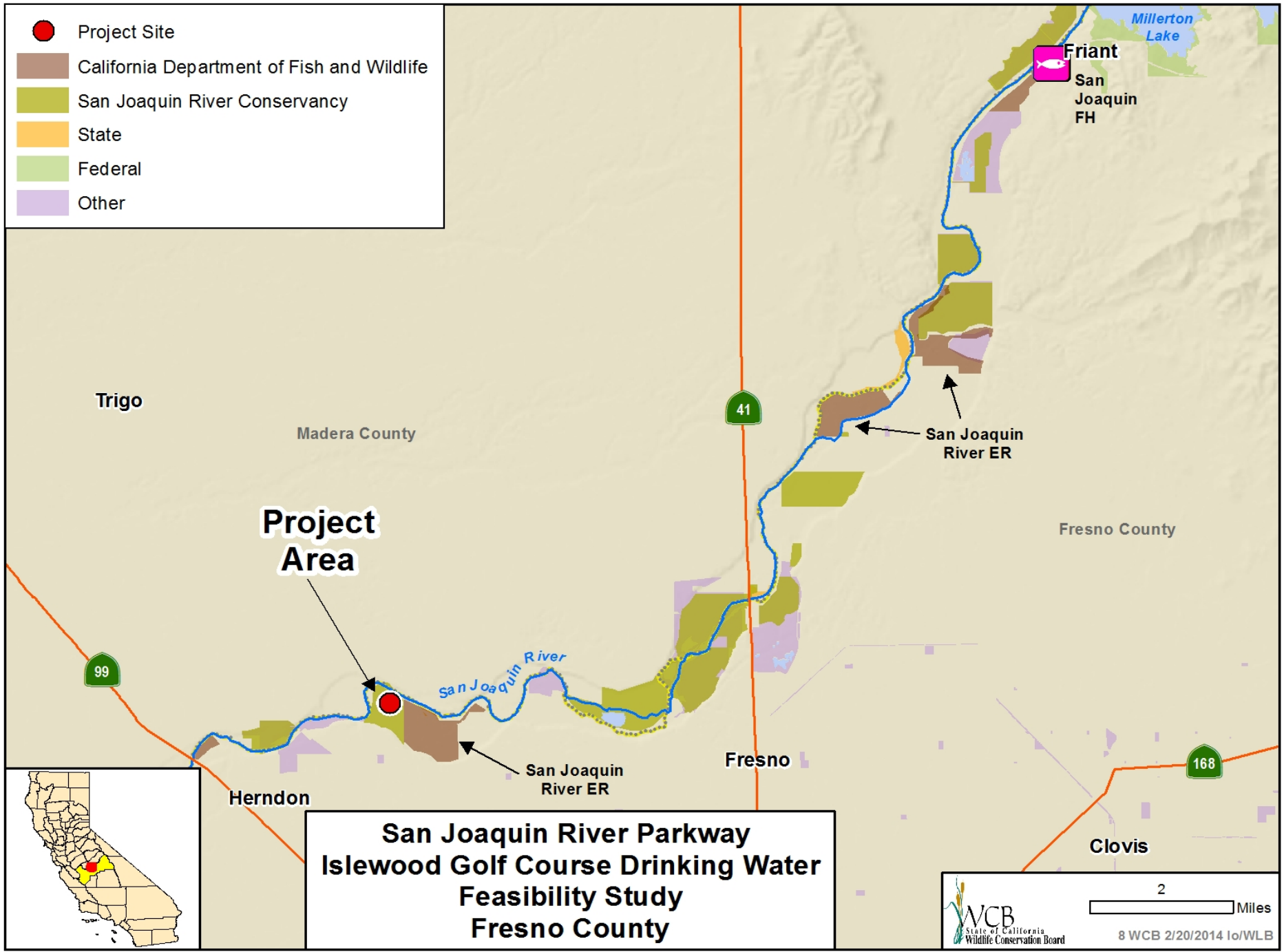
- Mature riparian forest – San Joaquin River

#7. San Joaquin River Bypass Riparian Restoration



- The San Joaquin River is the upper watercourse, with the Pick Anderson Bypass beginning below and stretching to the left

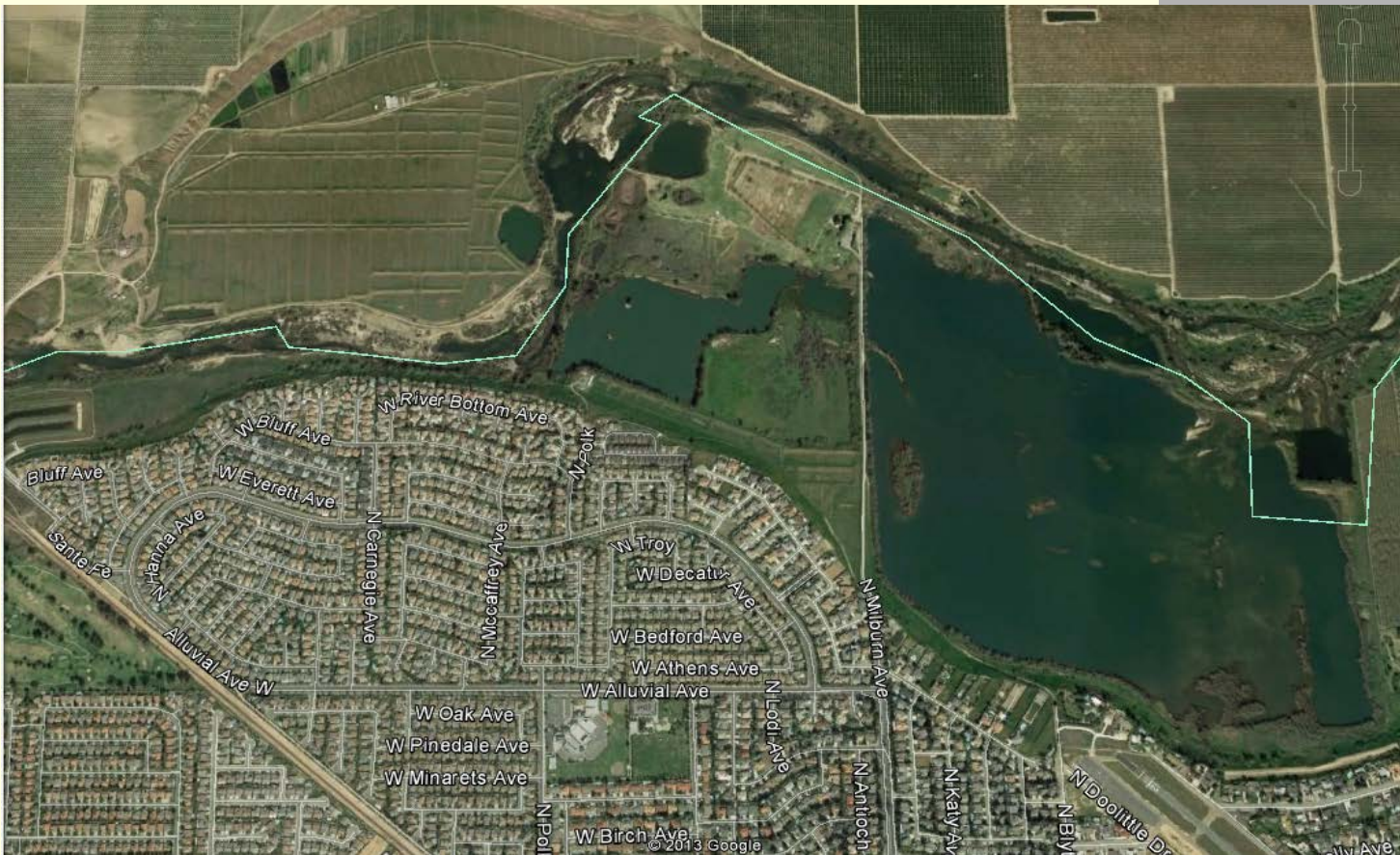
- Project Site
- California Department of Fish and Wildlife
- San Joaquin River Conservancy
- State
- Federal
- Other



Project Area

**San Joaquin River Parkway
Islewood Golf Course Drinking Water
Feasibility Study
Fresno County**

#8. San Joaquin River Parkway, Islewood Golf Course Drinking Water, Feasibility Study



- Aerial view of Islewood Golf Center

#8. San Joaquin River Parkway, Islewood Golf Course Drinking Water, Feasibility Study



- View from Milburn Avenue, looking north to Islewood Golf Center

#8. San Joaquin River Parkway, Islewood Golf Course Drinking Water, Feasibility Study

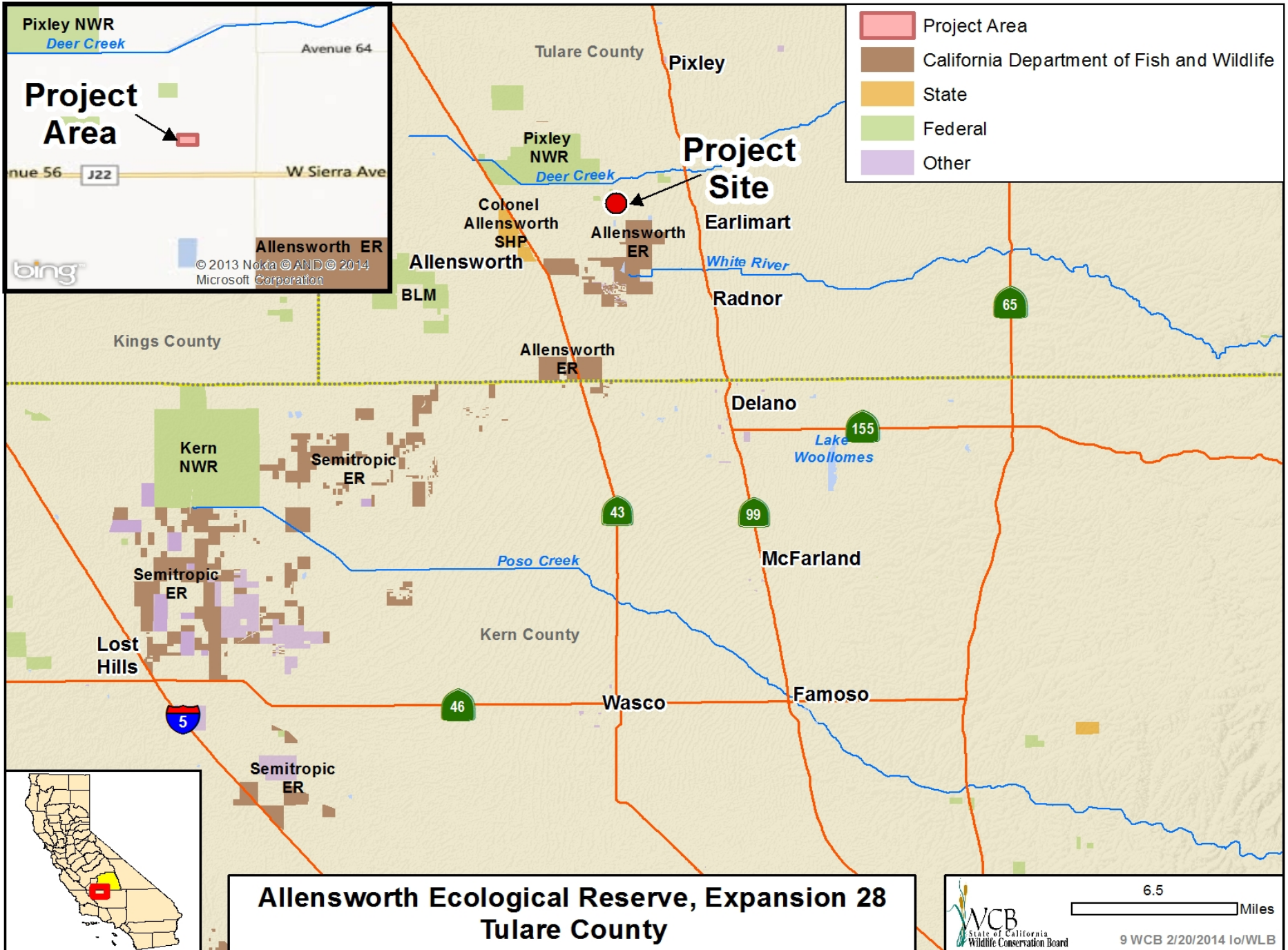


- Looking south towards Fresno from driving range

#8. San Joaquin River Parkway, Islewood Golf Course Drinking Water, Feasibility Study



- View of driving range and golf course



Allensworth Ecological Reserve, Expansion 28 Tulare County

#9. Allensworth Ecological Reserve, Expansion 28



- Burrowing Owl Habitat

#9. Allensworth Ecological Reserve, Expansion 28



■ San Joaquin kit fox

#9. Allensworth Ecological Reserve, Expansion 28

- Tipton Kangaroo Rat



#9. Allensworth Ecological Reserve, Expansion 28



- Blunt-Nosed Leopard Lizard

#9. Allensworth Ecological Reserve, Expansion 28

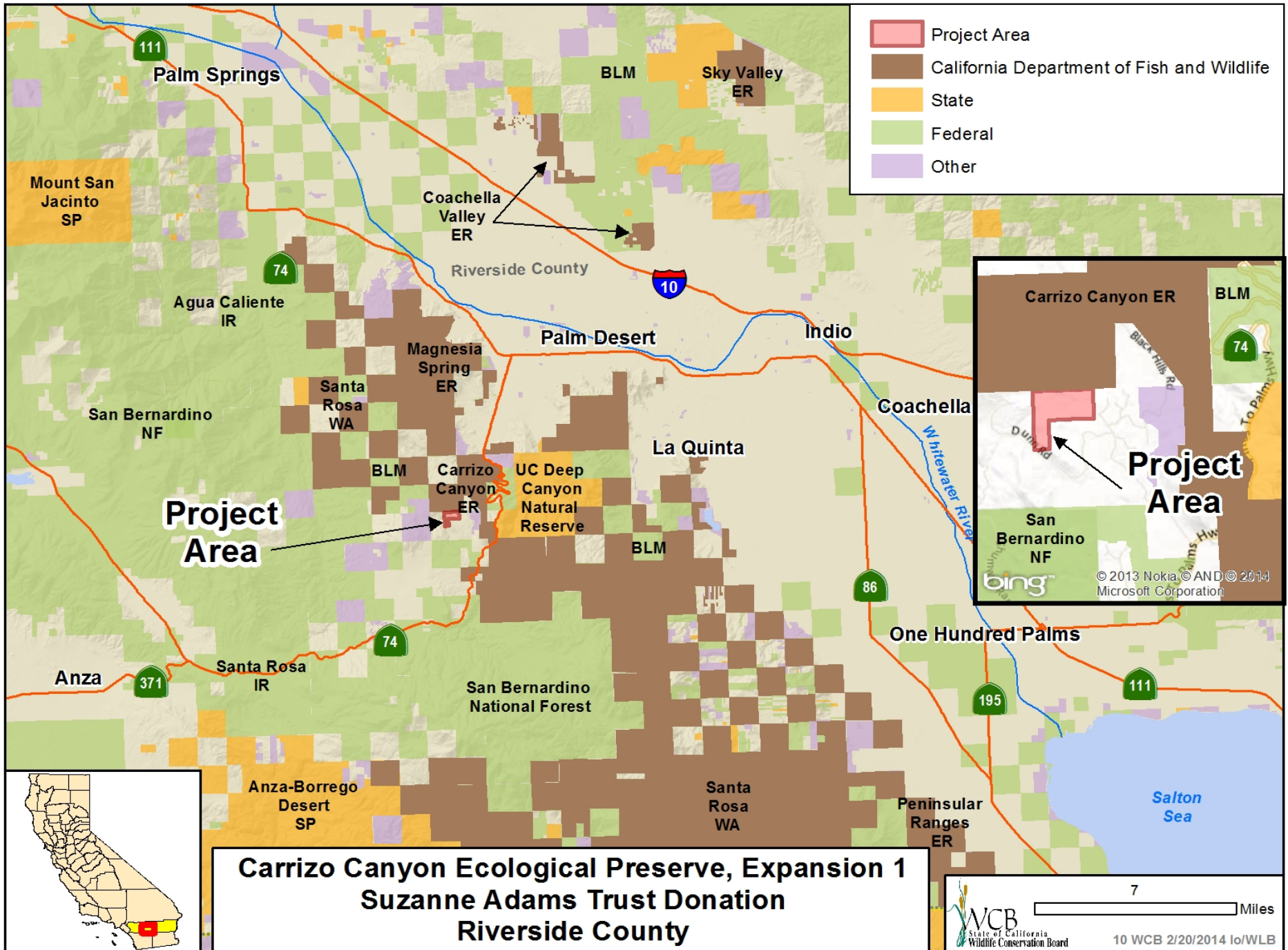


- View looking south

#9. Allensworth Ecological Reserve, Expansion 28



■ View looking west



#10. Carrizo Canyon Ecological Reserve, Expansion 1 Suzanne Adams Trust Donation



- Property looking east toward BLM lands

#10. Carrizo Canyon Ecological Reserve, Expansion 1 Suzanne Adams Trust Donation



- Open space area, Peninsular Bighorn Habitat

#10. Carrizo Canyon Ecological Reserve, Expansion 1 Suzanne Adams Trust Donation

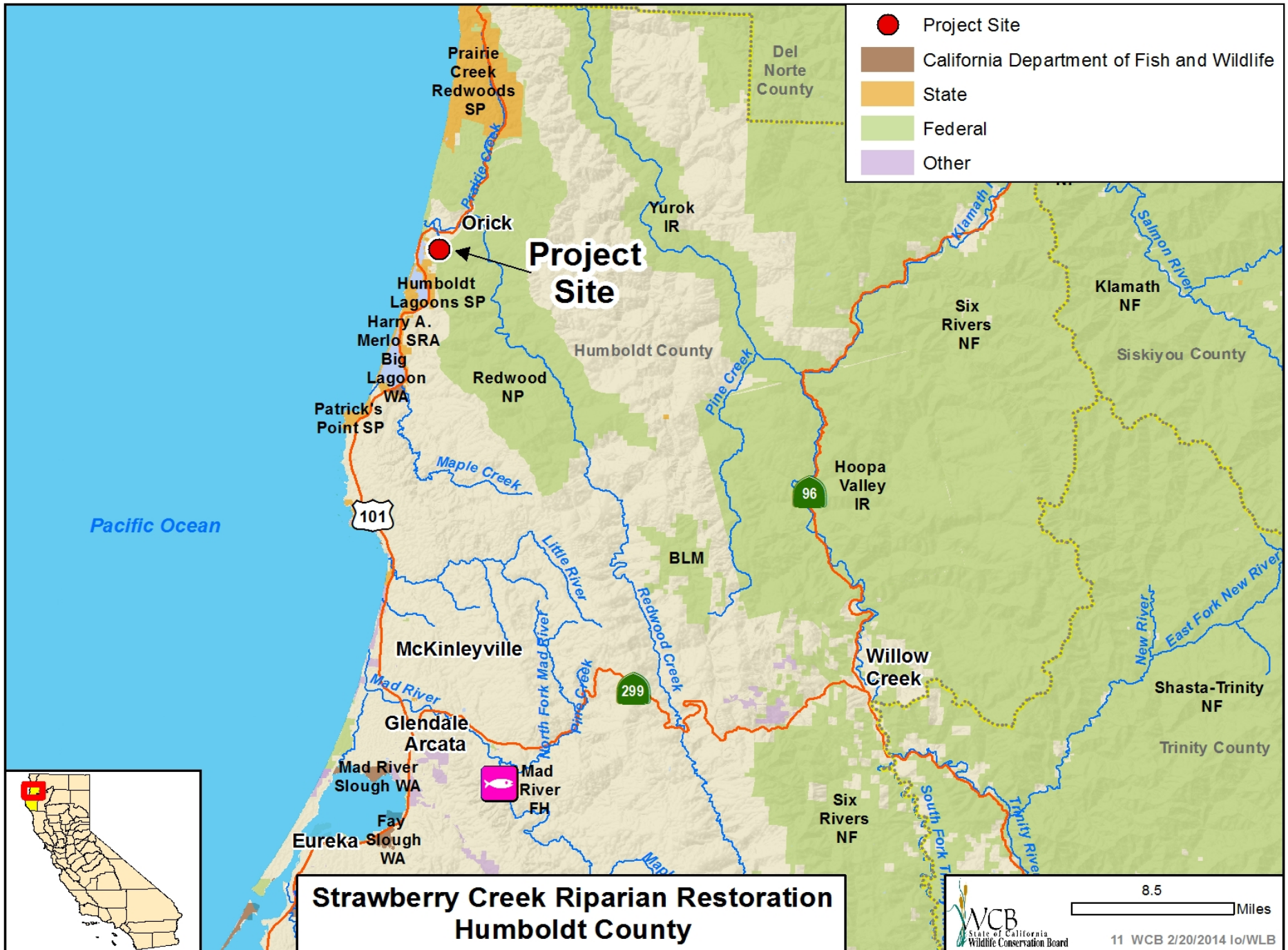


- Rock outcroppings adjacent to CDFW property

#10. Carrizo Canyon Ecological Reserve, Expansion 1 Suzanne Adams Trust Donation



- View north looking back to Coachella Valley



#11. Strawberry Creek Riparian Restoration



- Lower project reach of Strawberry Creek choked with invasive grasses.

#11. Strawberry Creek Riparian Restoration

- Invasive Canary grass blocking stream channel.



#11. Strawberry Creek Riparian Restoration



- Two year old riparian restoration of earlier project phase. Instream clearing will continue until willows and spruce trees are adequately tall to shade out invasive grasses.

#11. Strawberry Creek Riparian Restoration

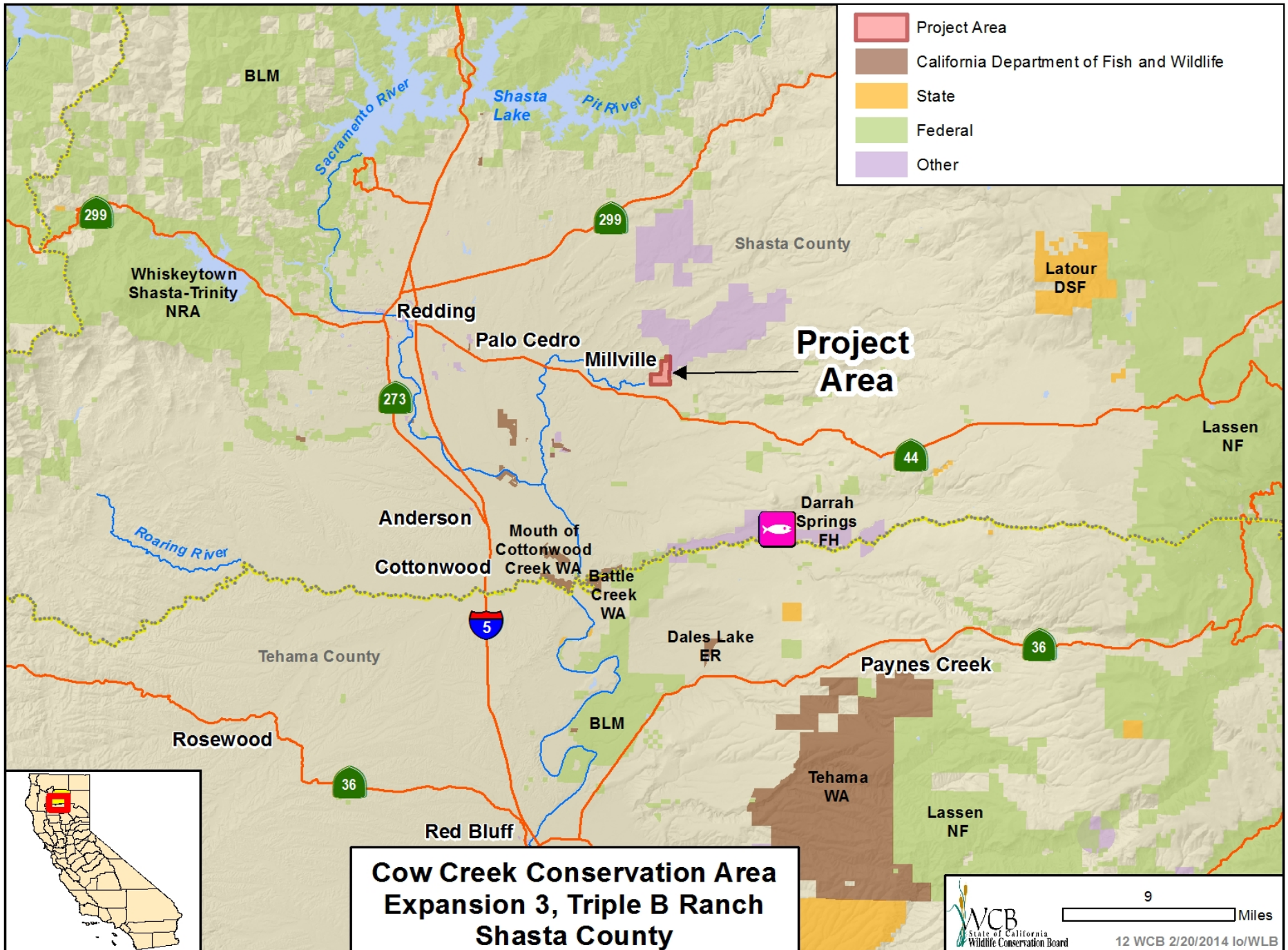
- Shaded, clear, cool water.



#11. Strawberry Creek Riparian Restoration



- Uppermost project reach. Trees will be protected from foraging elk until old enough to sustain foraging pressure



**Cow Creek Conservation Area
Expansion 3, Triple B Ranch
Shasta County**

#12. Cow Creek Conservation Area, Expansion 3, Triple B Ranch



- Cow Creek riparian corridor

#12. Cow Creek Conservation Area, Expansion 3, Triple B Ranch



- Northern property border with JS Ranch Conservation Easement

#12. Cow Creek Conservation Area, Expansion 3, Triple B Ranch

- Ben Miles observing fall-run Chinook salmon



#12. Cow Creek Conservation Area, Expansion 3, Triple B Ranch

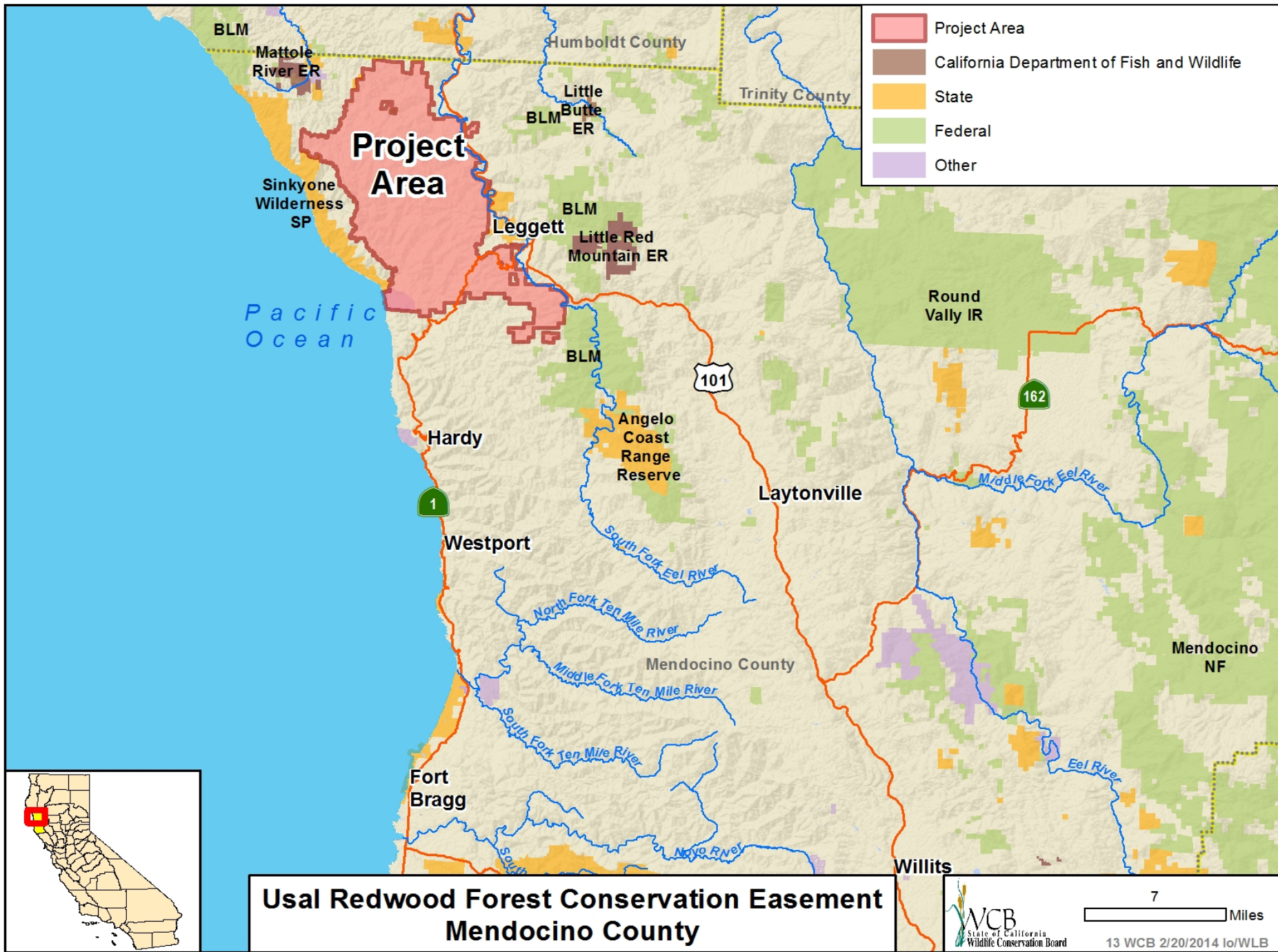


- Diverse habitat on the property

#12. Cow Creek Conservation Area, Expansion 3, Triple B Ranch



- Access road to creek through the oak habitat



#13. Usal Forest Conservation Easement Transfer



- Aerial view of the forest

#13. Usal Forest Conservation Easement Transfer



- Riparian habitat found on the property

#13. Usal Forest Conservation Easement Transfer



- View toward ocean from interior of the property

#13. Usal Forest Conservation Easement Transfer



- Elk found on property

#13. Usal Forest Conservation Easement Transfer

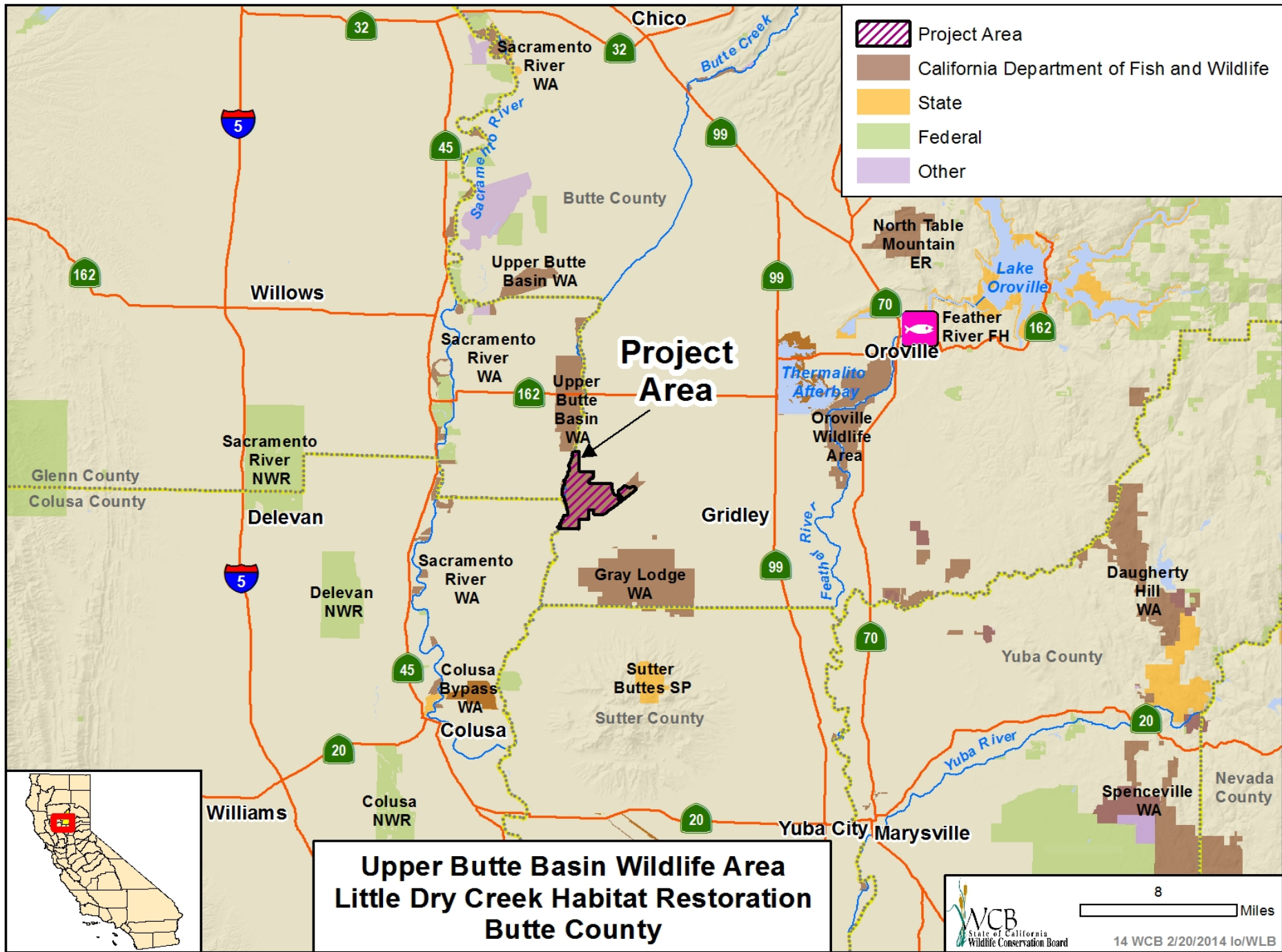


■ Usal Beach

#13. Usal Forest Conservation Easement Transfer

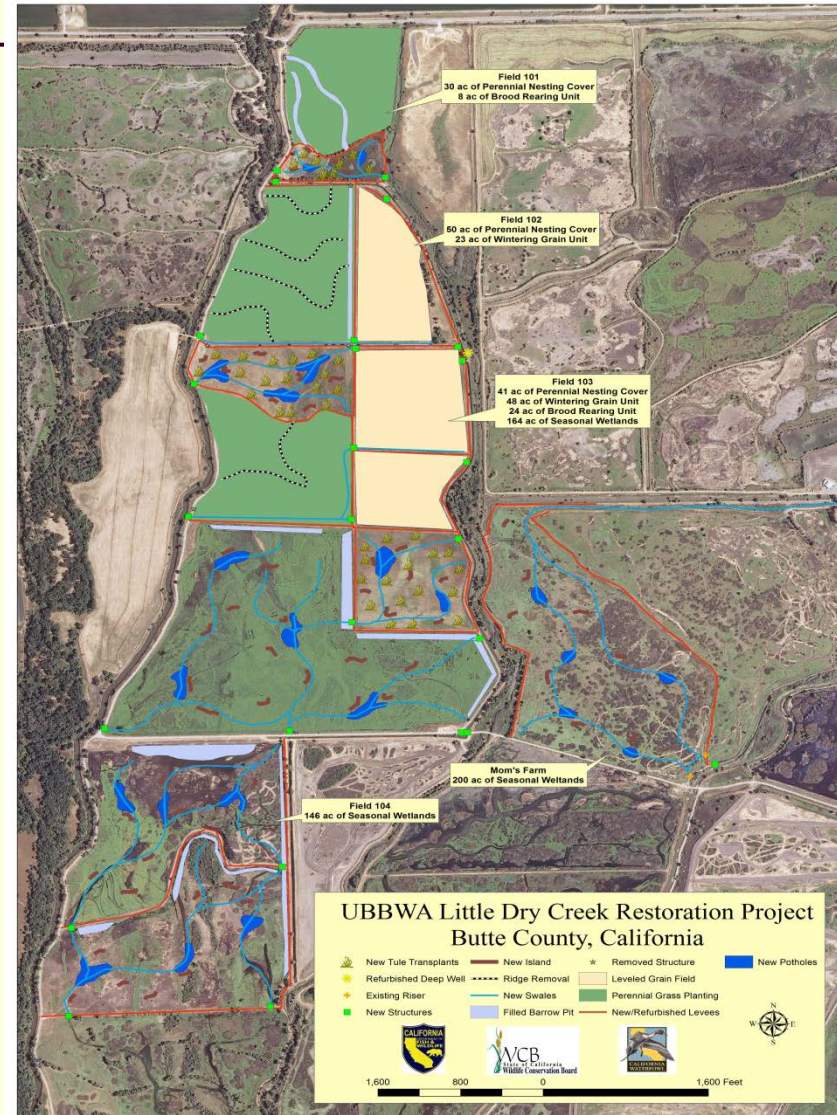


- Aerial view of property



#14. Upper Butte Basin Wildlife Area Little Dry Creek Habitat Restoration

- Acres to be Restored
 - 121 perennial nesting cover
 - 32 semi-permanent
 - 71 wintering grain
 - 310 seasonal wetlands
- Acres to be Enhanced
 - 200 seasonal wetlands



#14. Upper Butte Basin Wildlife Area Little Dry Creek Habitat Restoration



- Location of a future semi-permanent brood rearing wetland unit.

#14. Upper Butte Basin Wildlife Area Little Dry Creek Habitat Restoration



- Future seasonal wetland unit providing wintering resources for migratory birds

#14. Upper Butte Basin Wildlife Area Little Dry Creek Habitat Restoration

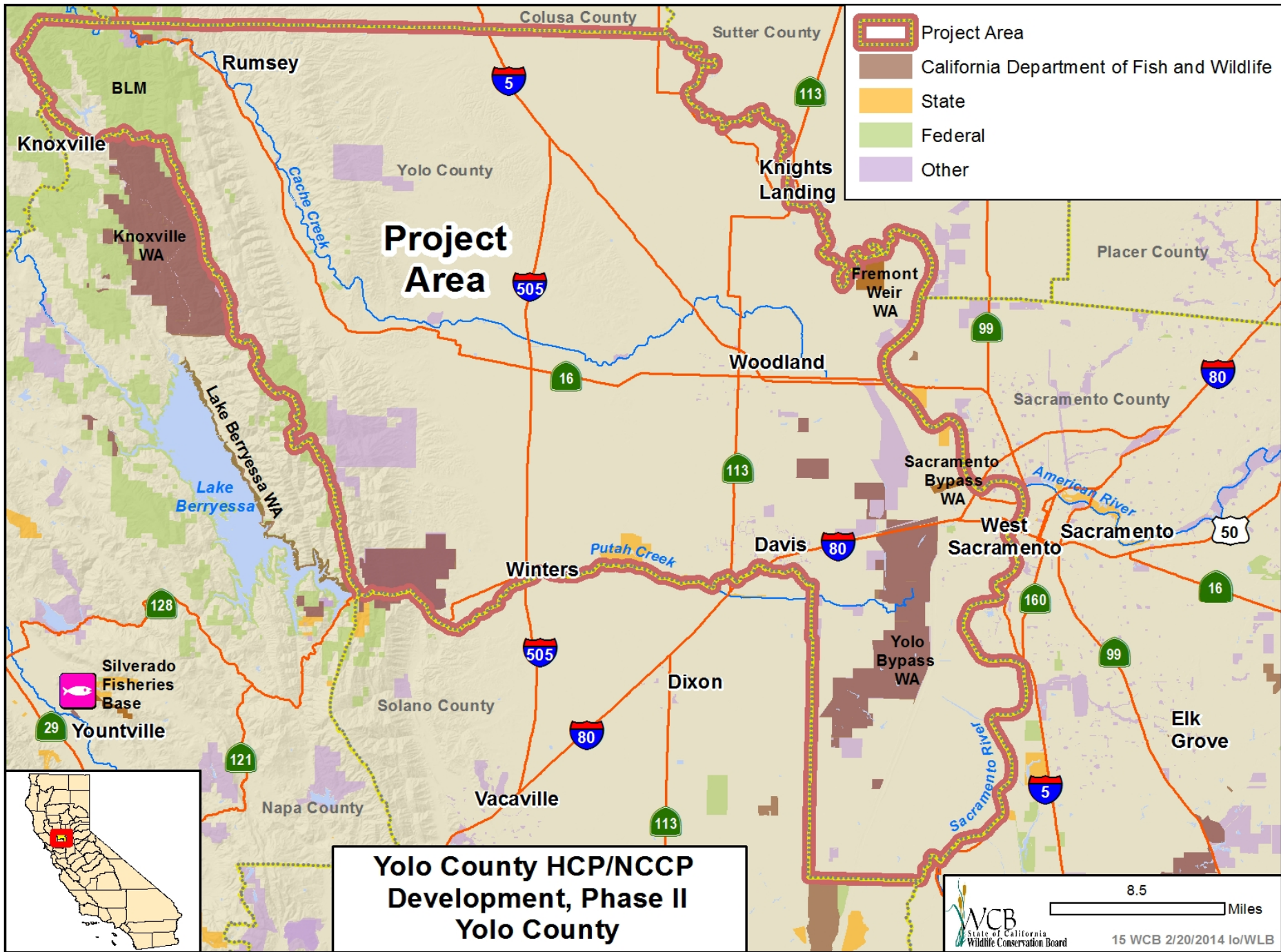


- Area to be seeded with perennial grasses to improve nesting cover.

#14. Upper Butte Basin Wildlife Area Little Dry Creek Habitat Restoration



- Anticipated results of wetland development



#15. Yolo County HCP/NCCP Development Phase II



■ Vernal Pool

#15. Yolo County HCP/NCCP Development Phase II



- Native Grasslands at Conaway Ranch

#15. Yolo County HCP/NCCP Development Phase II



- Burrowing Owl burrows in grasslands

#15. Yolo County HCP/NCCP Development Phase II



■ Burrowing Owl

#15. Yolo County HCP/NCCP Development Phase II



- Irrigated pasture

#15. Yolo County HCP/NCCP Development Phase II



- Alfalfa field

#15. Yolo County HCP/NCCP Development Phase II

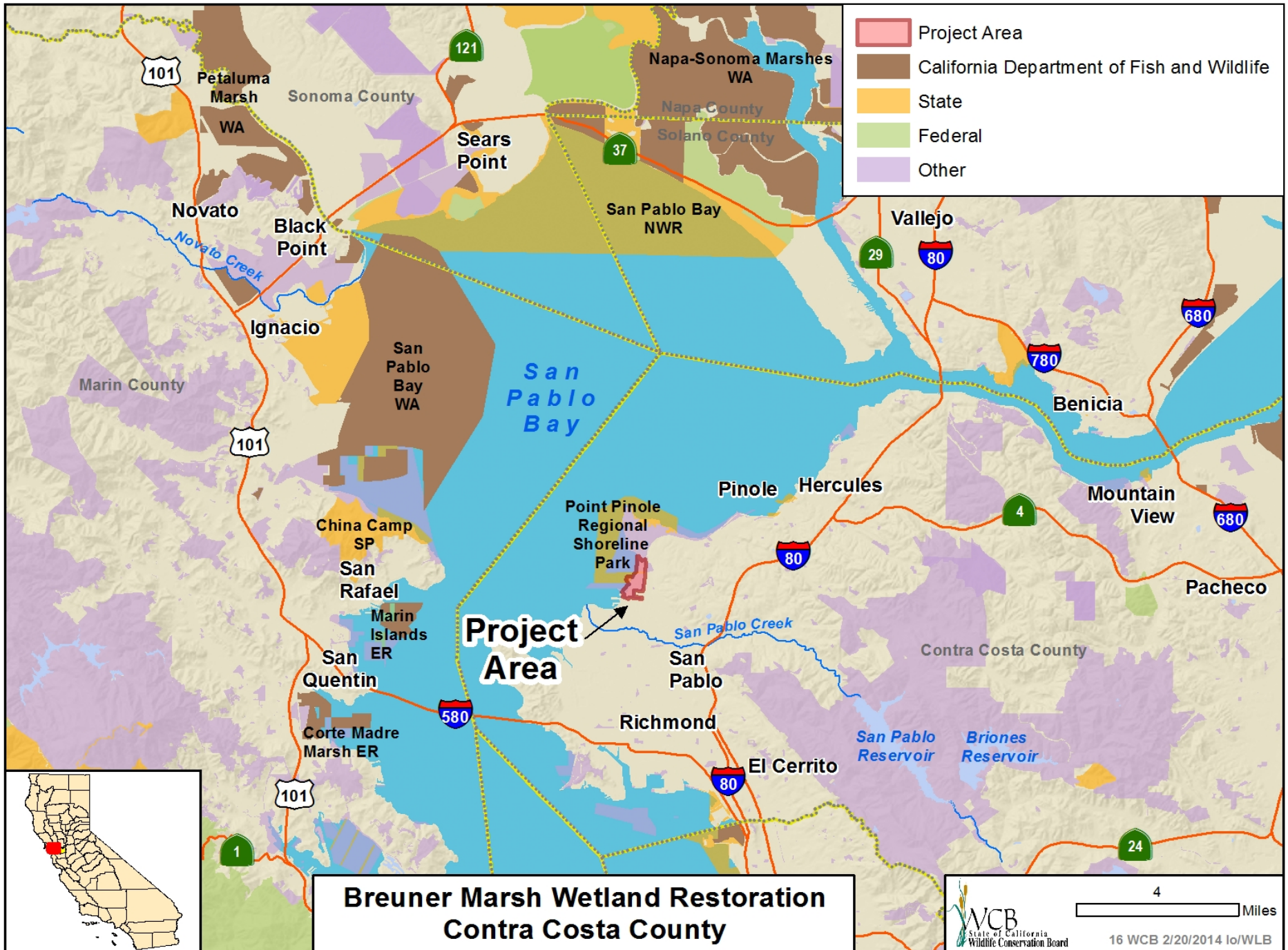


- Tri-colored blackbird

#15. Yolo County HCP/NCCP Development Phase II



- Vernal pool and grassland habitats



#16. Breuner Marsh Wetland Restoration



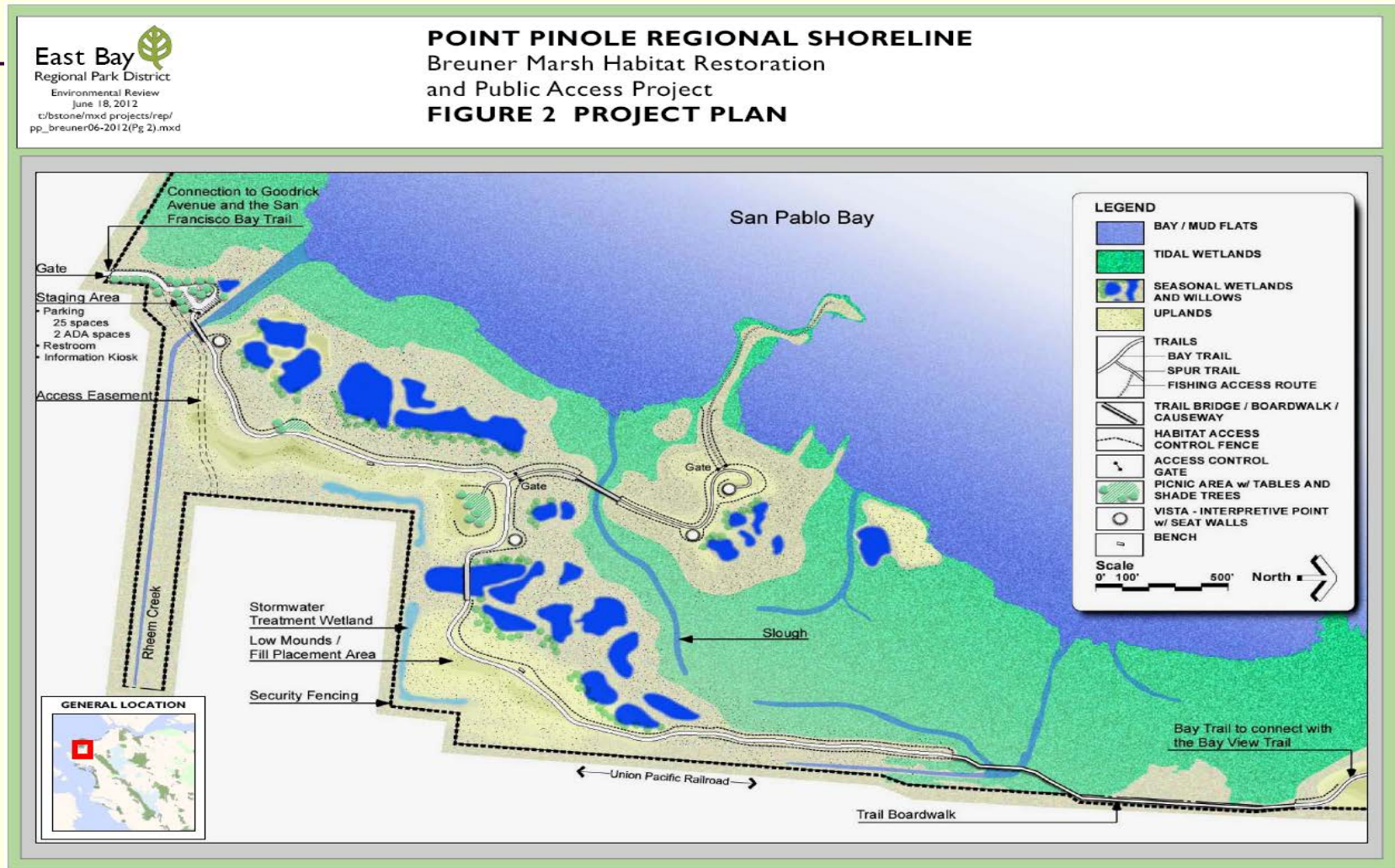
- Site overview

#16. Breuner Marsh Wetland Restoration



- Site location adjacent to Point Pinole Regional Shoreline

#16. Breuner Marsh Wetland Restoration



- Site plan: Tidal and seasonal wetlands, public access trails and facilities

#16. Breuner Marsh Wetland Restoration



- Project will create tidal and seasonal wetlands with a net gain of 25.9 acres tidal wetland habitat

#16. Breuner Marsh Wetland Restoration



- Tidal marsh supports listed species including California clapper rail, Black rail, and Salt marsh harvest mouse

#16. Breuner Marsh Wetland Restoration

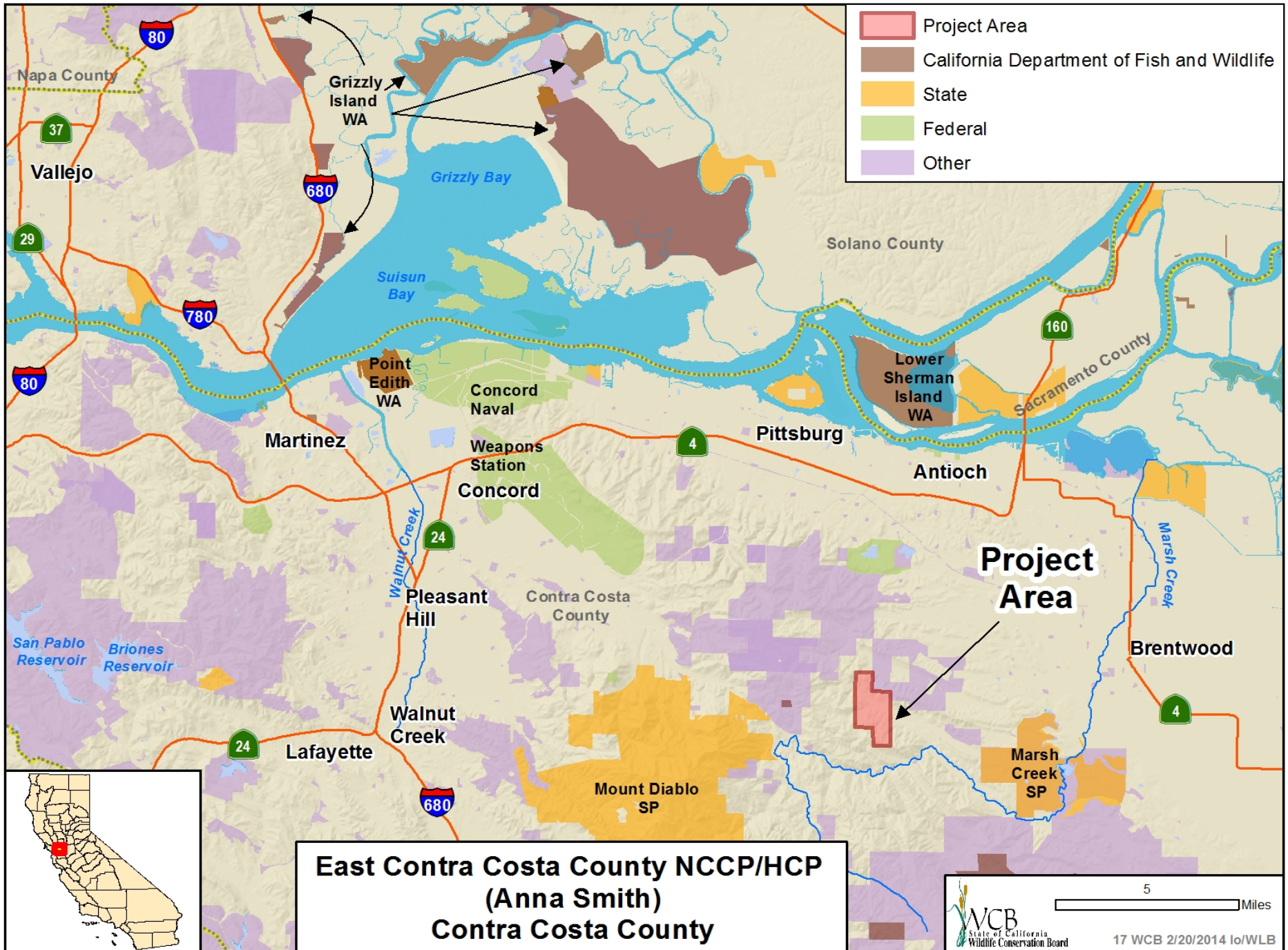


- Upland sites will be planted with native perennial grassland species

#16. Breuner Marsh Wetland Restoration



- Tidal and seasonal wetland habitat to be created onsite



#17. East Contra Costa County NCCP/HCP (Anna Smith)



- Looking north at deteriorated barn.

#17. East Contra Costa County NCCP/HCP (Anna Smith)



- Looking north across main access road.

#17. East Contra Costa County NCCP/HCP (Anna Smith)



- View east across meadow.

#17. East Contra Costa County NCCP/HCP (Anna Smith)

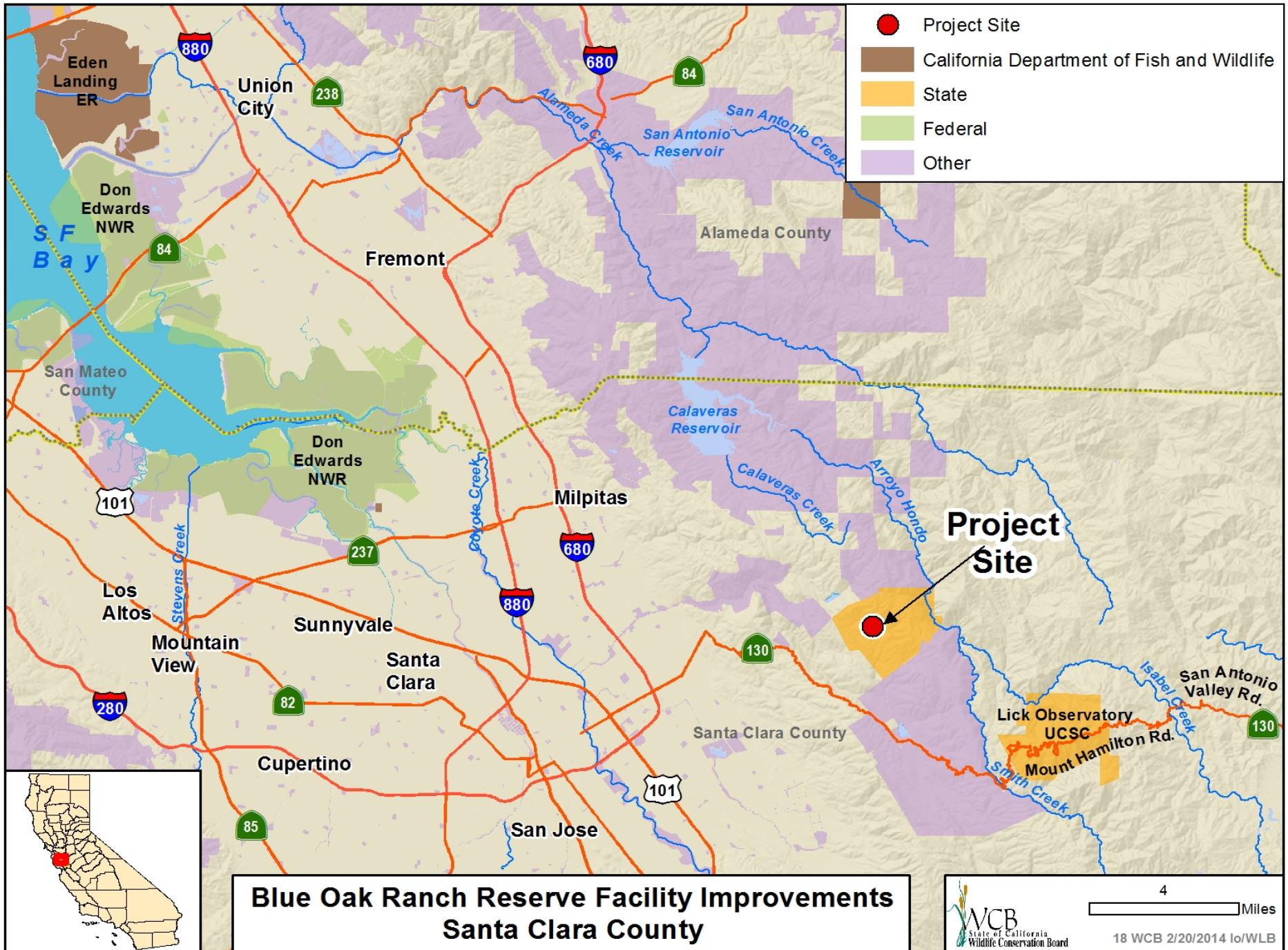


- Old wagon with oak woodlands in the background.

#17. East Contra Costa County NCCP/HCP (Anna Smith)

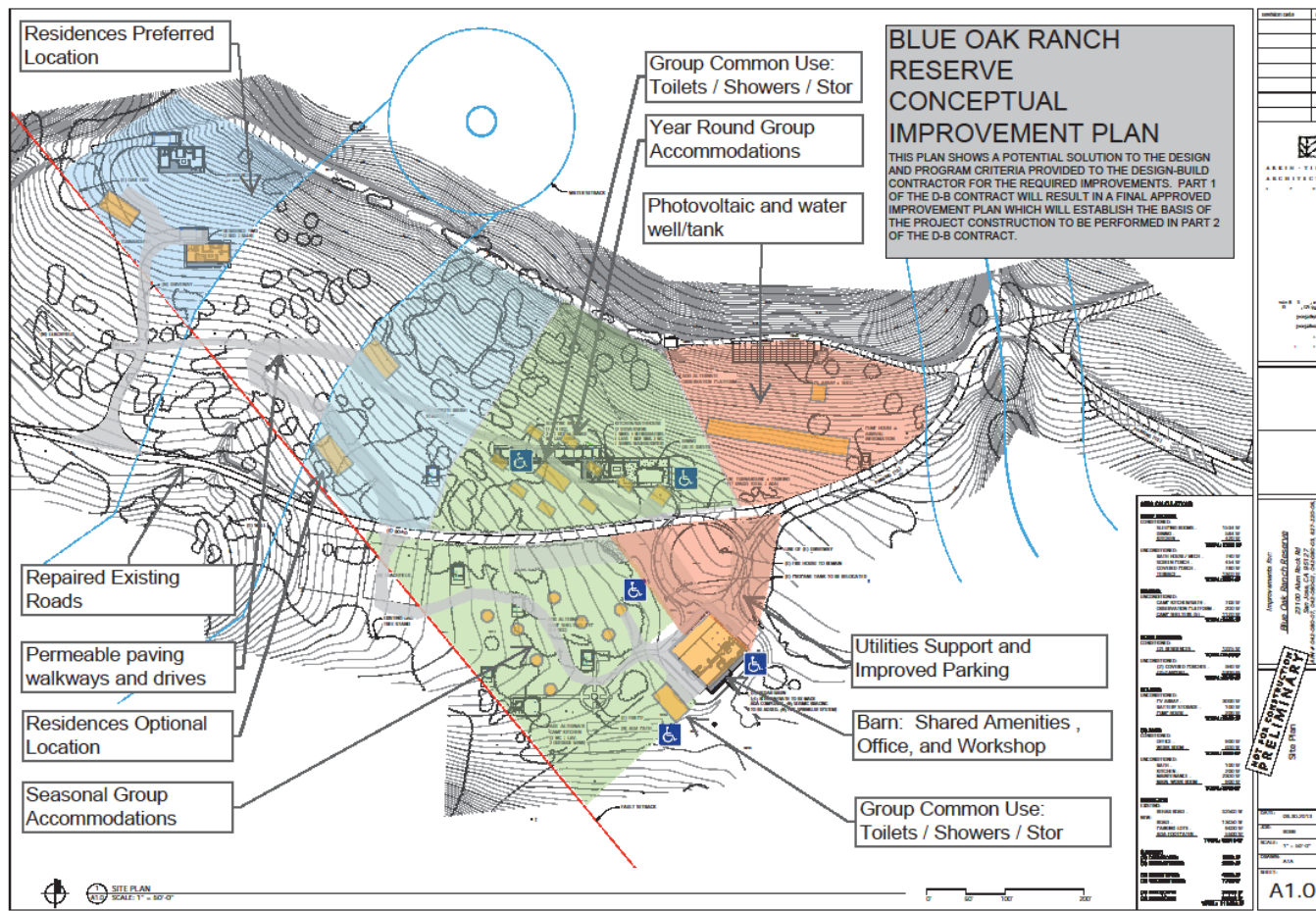


- Cattle grazing along the western property boundary.



Blue Oak Ranch Reserve Facility Improvements Santa Clara County

#18. Blue Oak Ranch Reserve Facility Improvements



■ Project objective

#18. Blue Oak Ranch Reserve Facility Improvements



- Currently, this barn is the only permanent functional structure on site.

#18. Blue Oak Ranch Reserve Facility Improvements

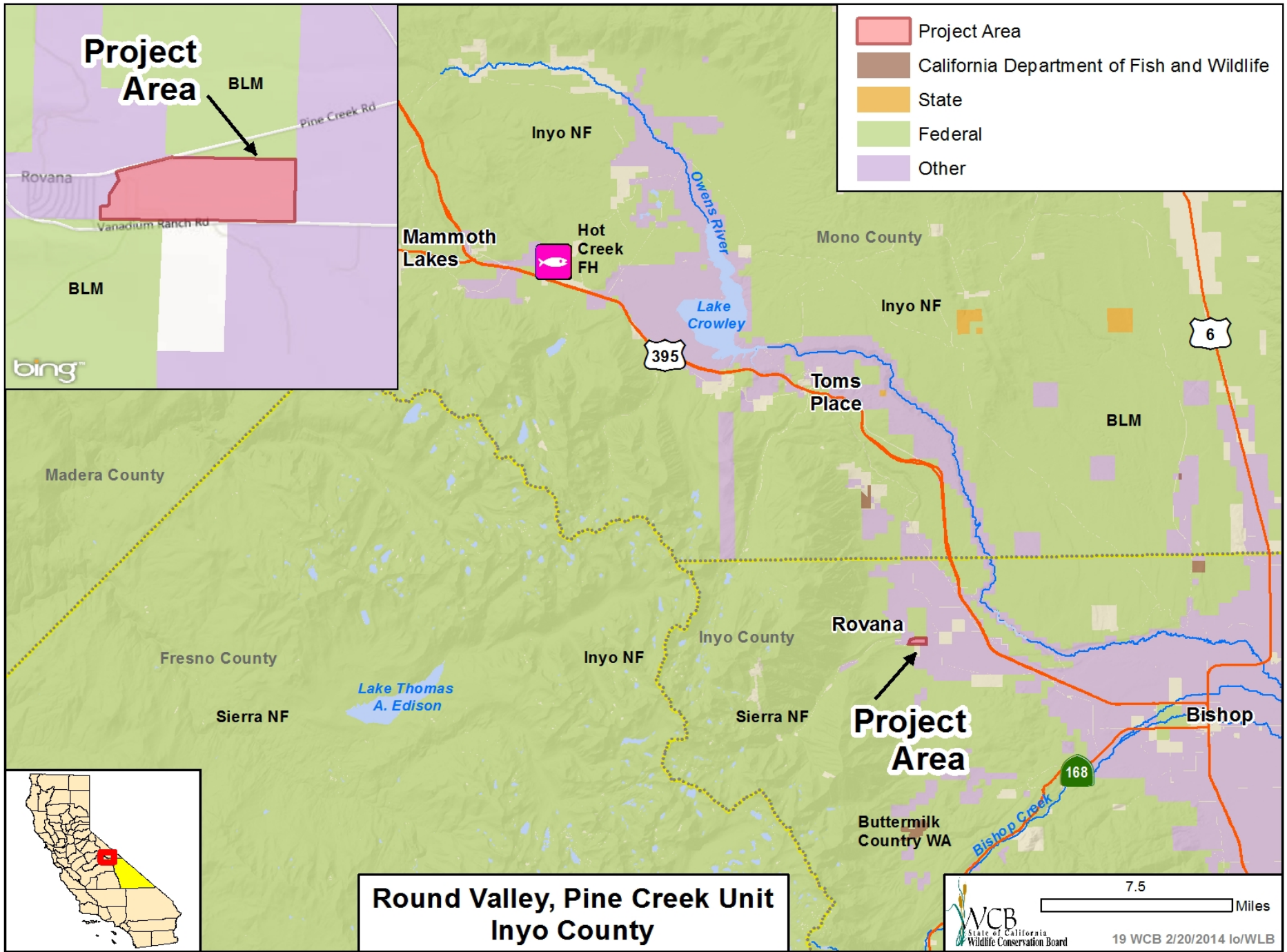


- This project will enhance campground area with camping platforms and restroom facilities.

#18. Blue Oak Ranch Reserve Facility Improvements



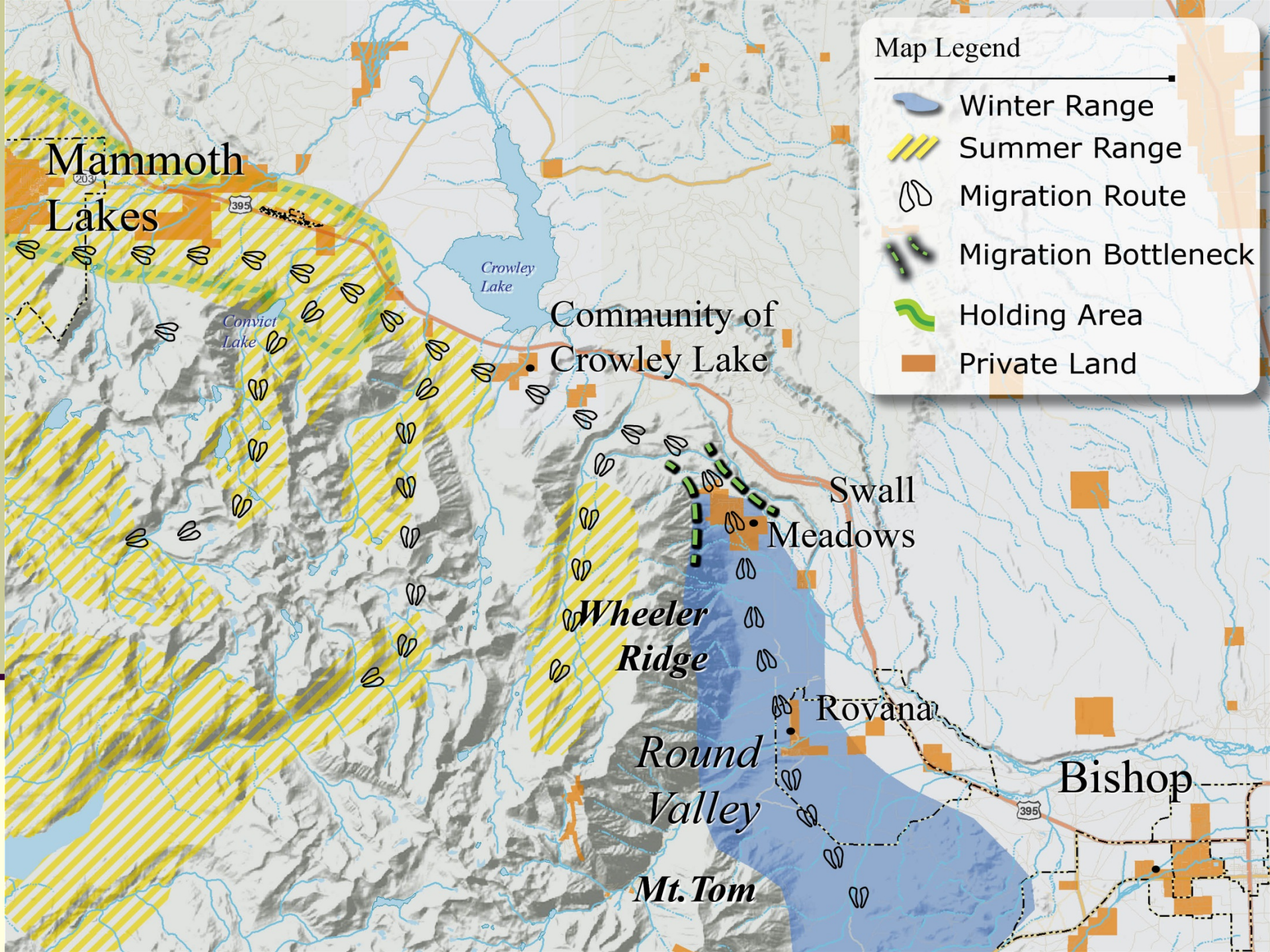
- Project will provide two residences for the director and site steward.



#19. Round Valley Pine Creek Unit



- Round Valley Deer



#19. Round Valley Pine Creek Unit



■ Mill Creek

#19. Round Valley Pine Creek Unit

- Bitterbrush



#19. Round Valley Pine Creek Unit



■ Pine Creek

#19. Round Valley Pine Creek Unit



- Arcularius Ditch

#19. Round Valley Pine Creek Unit



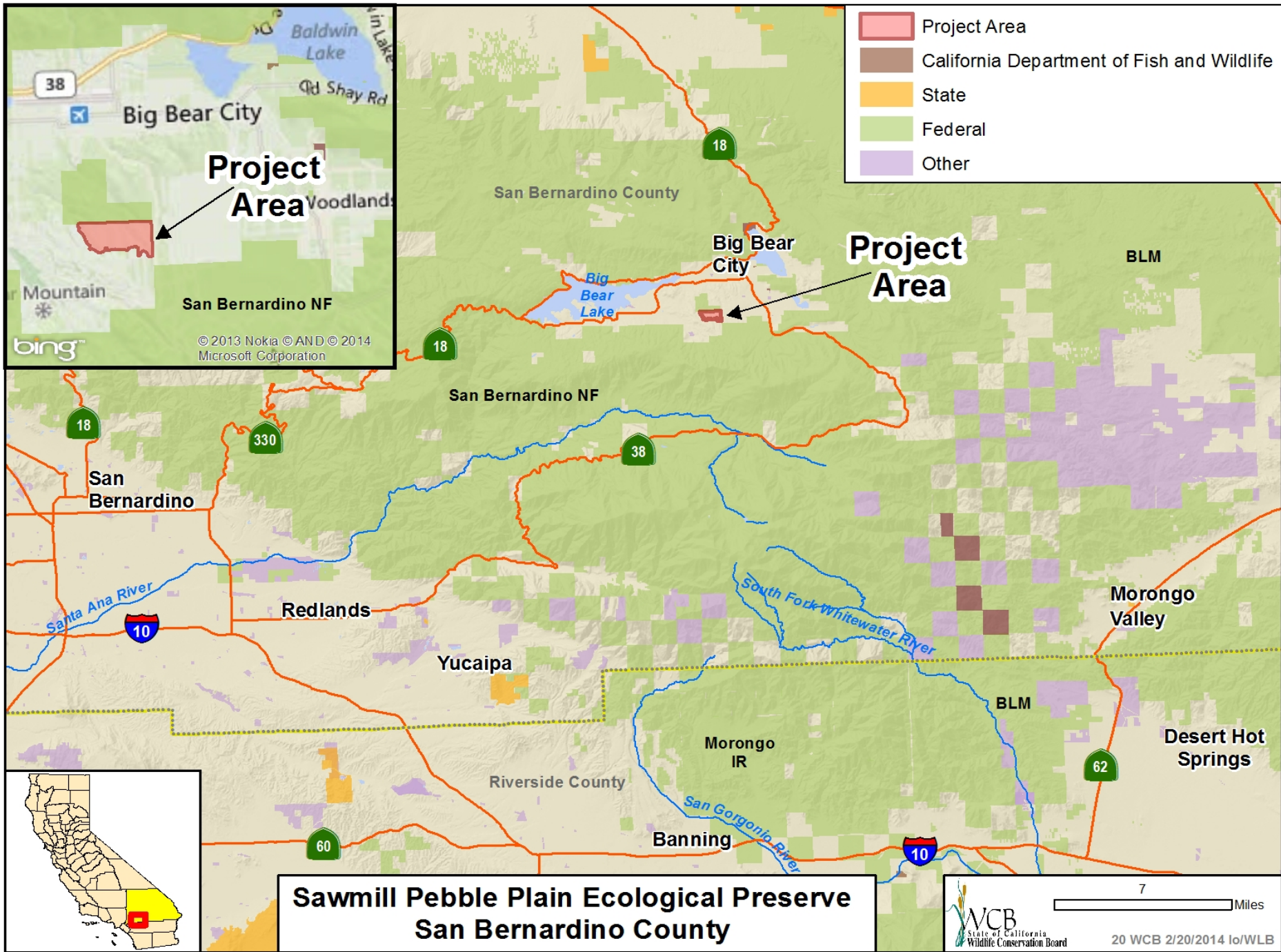
#19. Round Valley Pine Creek Unit



- Project site at the base of Mt. Tom

#19. Round Valley Pine Creek Unit





#20. Sawmill Pebble Plain Ecological Preserve



- **Undisturbed area of Pebble Plain habitat**

#20. Sawmill Pebble Plain Ecological Preserve



- Uncontrolled area of destroyed Pebble Plain habitat

#20. Sawmill Pebble Plain Ecological Preserve



- Existing trail through native pebble plain habitat

#20. Sawmill Pebble Plain Ecological Preserve

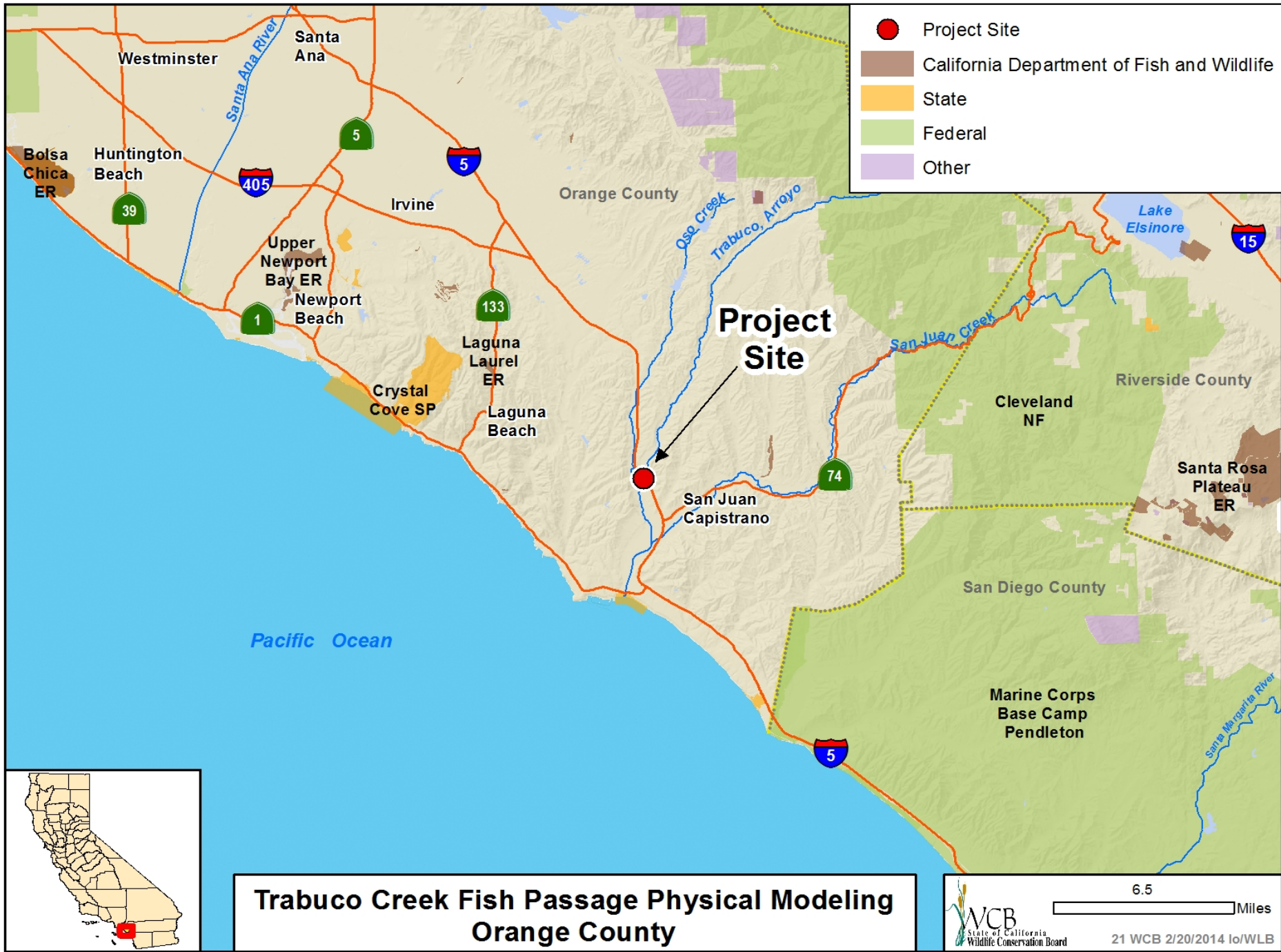


- Small pebble plants- the kennedy buckwheat, southern mountain buckwheat. The smaller plant to the right is the silver-haired ivesia, rat-tails

#20. Sawmill Pebble Plain Ecological Preserve

- Western juniper. The trees surrounding the western juniper are single-leaf pinyon pines. The plants/shrubs in the foreground are manzanitas





#21. Trabuco Creek Fish Passage Physical Modeling



■ Trabuco Creek at Metrolink.

#21. Trabuco Creek Fish Passage Physical Modeling



■ High Flow

#21. Trabuco Creek Fish Passage Physical Modeling



■ Low flow.

#21. Trabuco Creek Fish Passage Physical Modeling



■ Undercut stream revetment.

#21. Trabuco Creek Fish Passage Physical Modeling



- Steam undercrossing at I-5. Engineered primarily for floodwater conveyance.

#21. Trabuco Creek Fish Passage Physical Modeling



- View downstream of project site, natural substrate.

[illegible]

-

#21. Trabuco Creek Fish Passage Physical Modeling



The goal - a self-sustaining steelhead population in Trabuco Creek.

#22. San Felipe Valley Wildlife Area, Expansion 5 (Thompson)



- Looking east on property

#22. San Felipe Valley Wildlife Area, Expansion 5 (Thompson)



- Looking southeast on the property

#22. San Felipe Valley Wildlife Area, Expansion 5 (Thompson)



- Least Bell's Vireo

#22. San Felipe Valley Wildlife Area,
Expansion 5 (Thompson)



- Southwestern willow flycatcher

#22. San Felipe Valley Wildlife Area, Expansion 5 (Thompson)

- Cooper's Hawk



#22. San Felipe Valley Wildlife Area, Expansion 5 (Thompson)



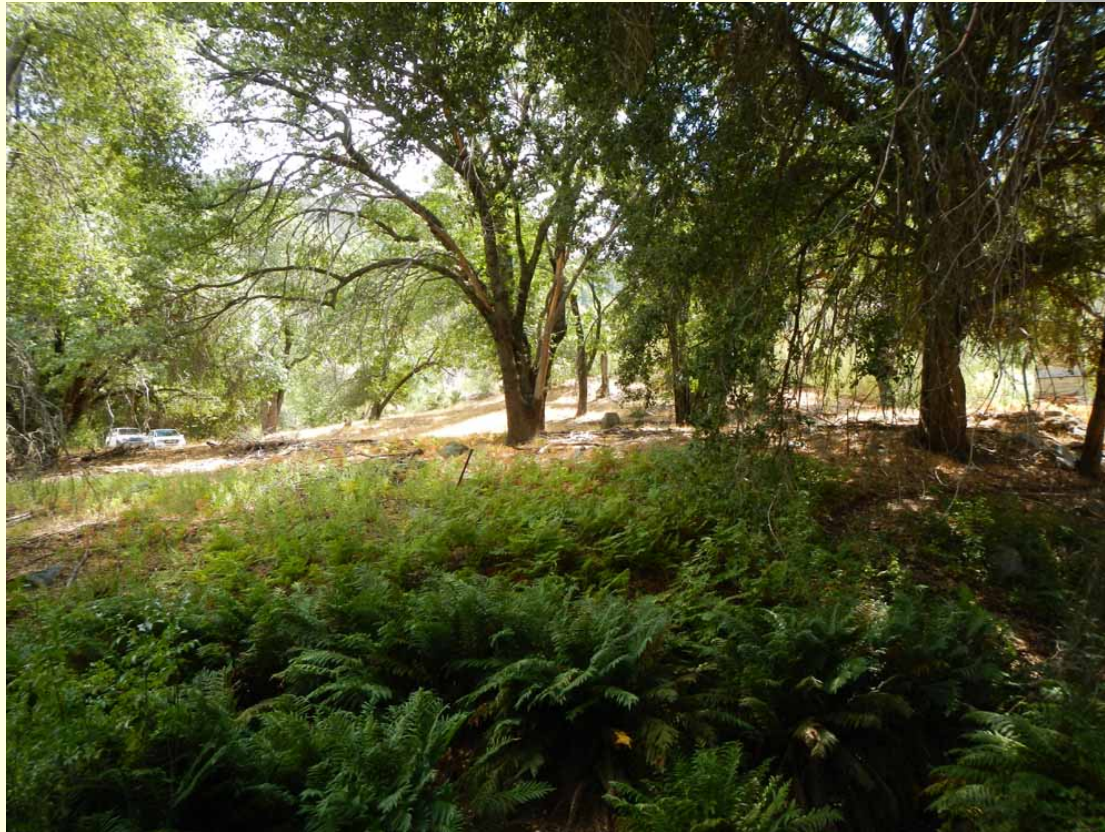
- Ring-tailed cat

#22. San Felipe Valley Wildlife Area, Expansion 5 (Thompson)

- Year Round Spring on property running north to south



#22. San Felipe Valley Wildlife Area, Expansion 5 (Thompson)



- Looking west on property

Potential Criteria for Priority Project Determination

With respect to Goal A Environmental Protection and Conservation, and Goal B Environmental Restoration and Enhancement, a priority project is one that:

- Aligns with the conservation actions in the Wildlife Action Plan (WAP) bio-regions.
- Demonstrates consistency with relevant conservation plans, e.g., HCPs, NCCPs, etc.
- Provides organizational capacity for long-term stewardship.
- Addresses:
 - Climate change resiliency and adaptation
 - Water management best practices
 - Appropriate public use (without degrading ecosystems)
 - Species strongholds or refugia
 - Habitat connectivity
 - Threatened and endangered species
 - Under-served communities
- Leverages multiple funding sources (both public and private).

With respect to Goal C Public Use and Enjoyment, a priority project is one that:

- Accommodates a diversity of recreation types.
- Addresses the needs of under-served communities.
- Demonstrates an expected level of use with no degradation of ecosystems.
- Provides the organizational capacity for ongoing maintenance and operations.