



California Department of Fish and Wildlife

Klamath-Trinity Project

Klamath Basin Chinook Salmon Spawning Escapement, Harvest and Age Composition

Salmon Information Public Meeting
Santa Rosa, CA. February 26, 2014
Wade Sinnen



Klamath River Basin

● Crescent City

Iron Gate Dam

Iron Gate Hatchery

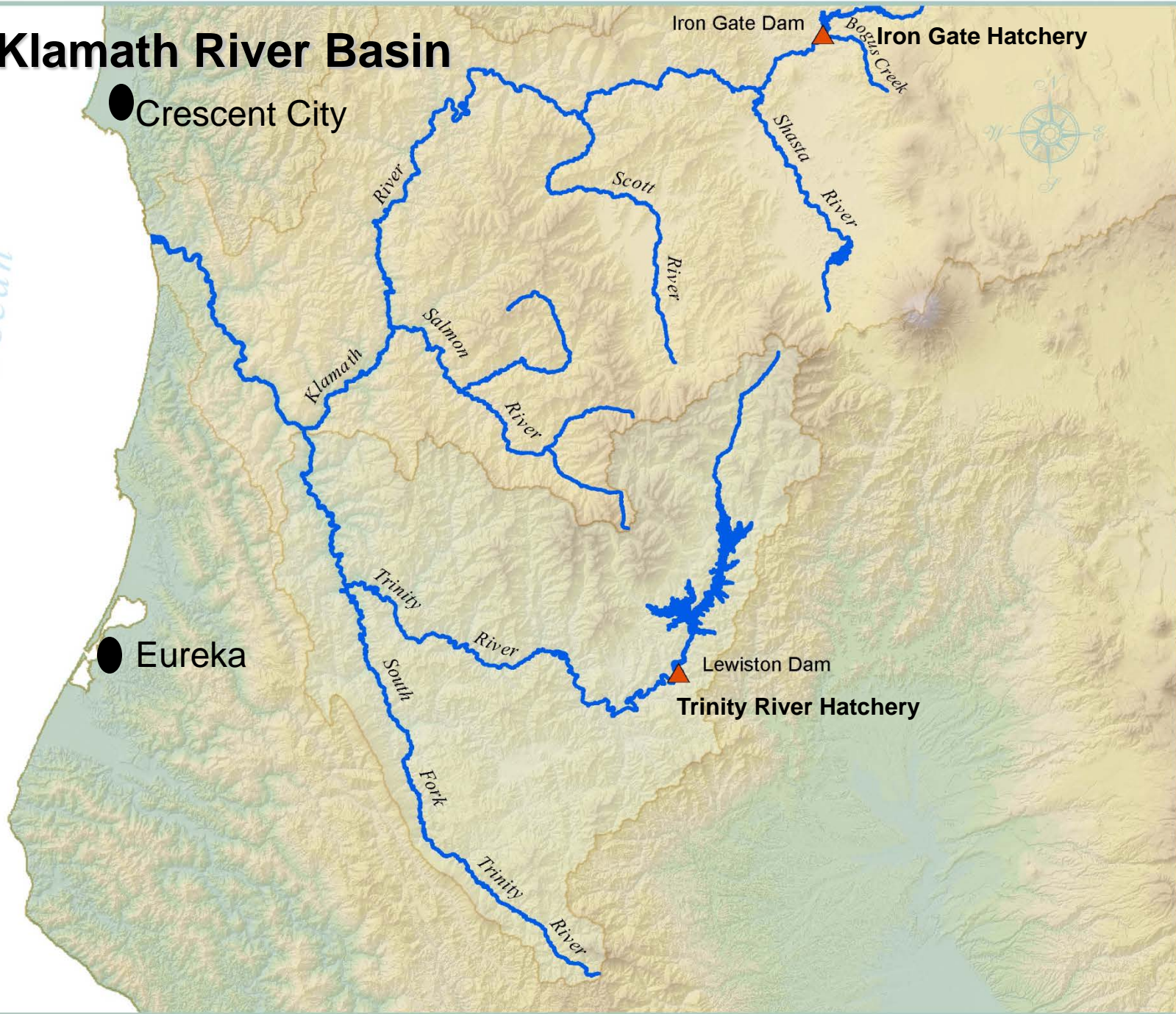


Pacific Ocean

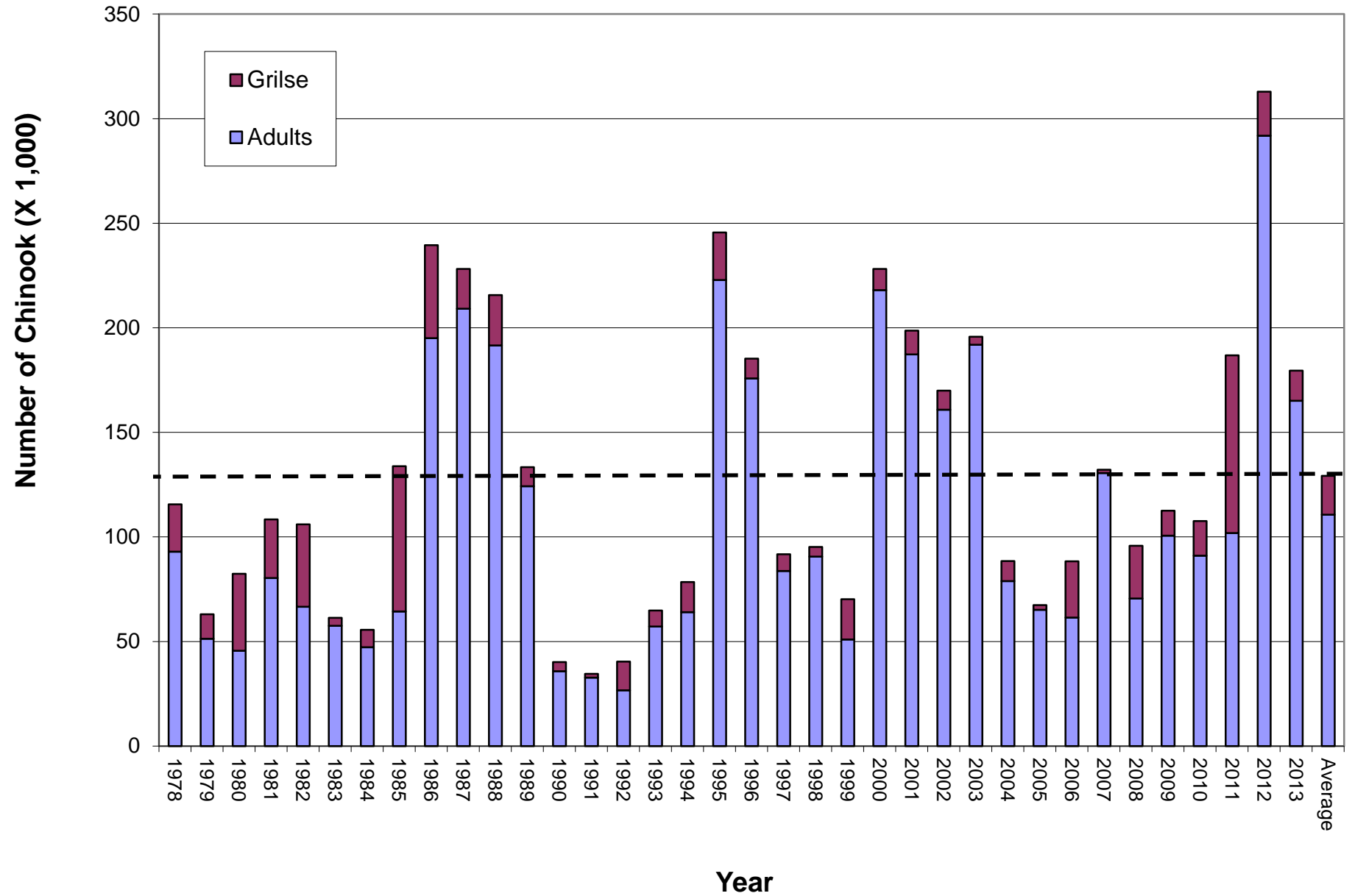
● Eureka

Lewiston Dam

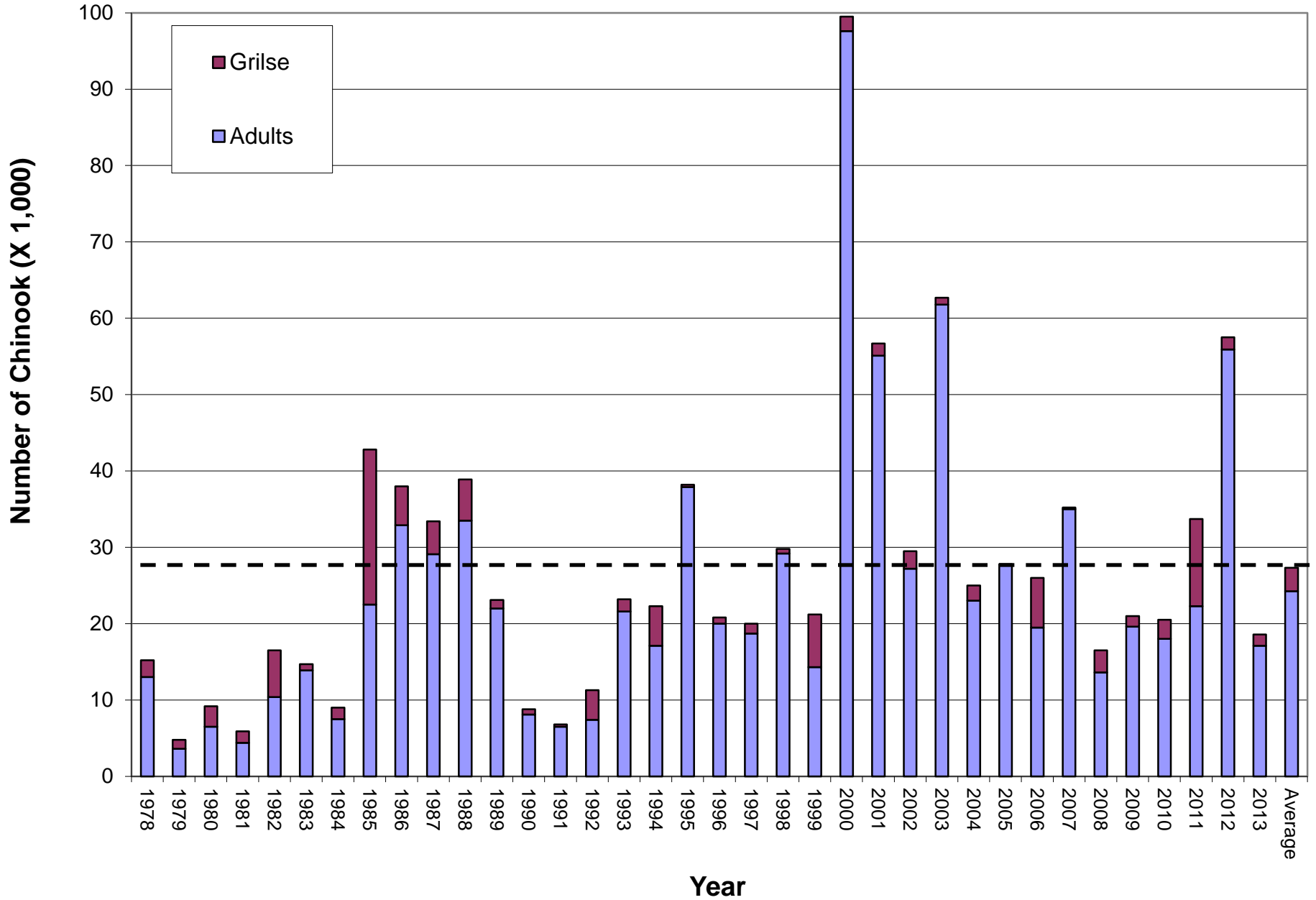
Trinity River Hatchery



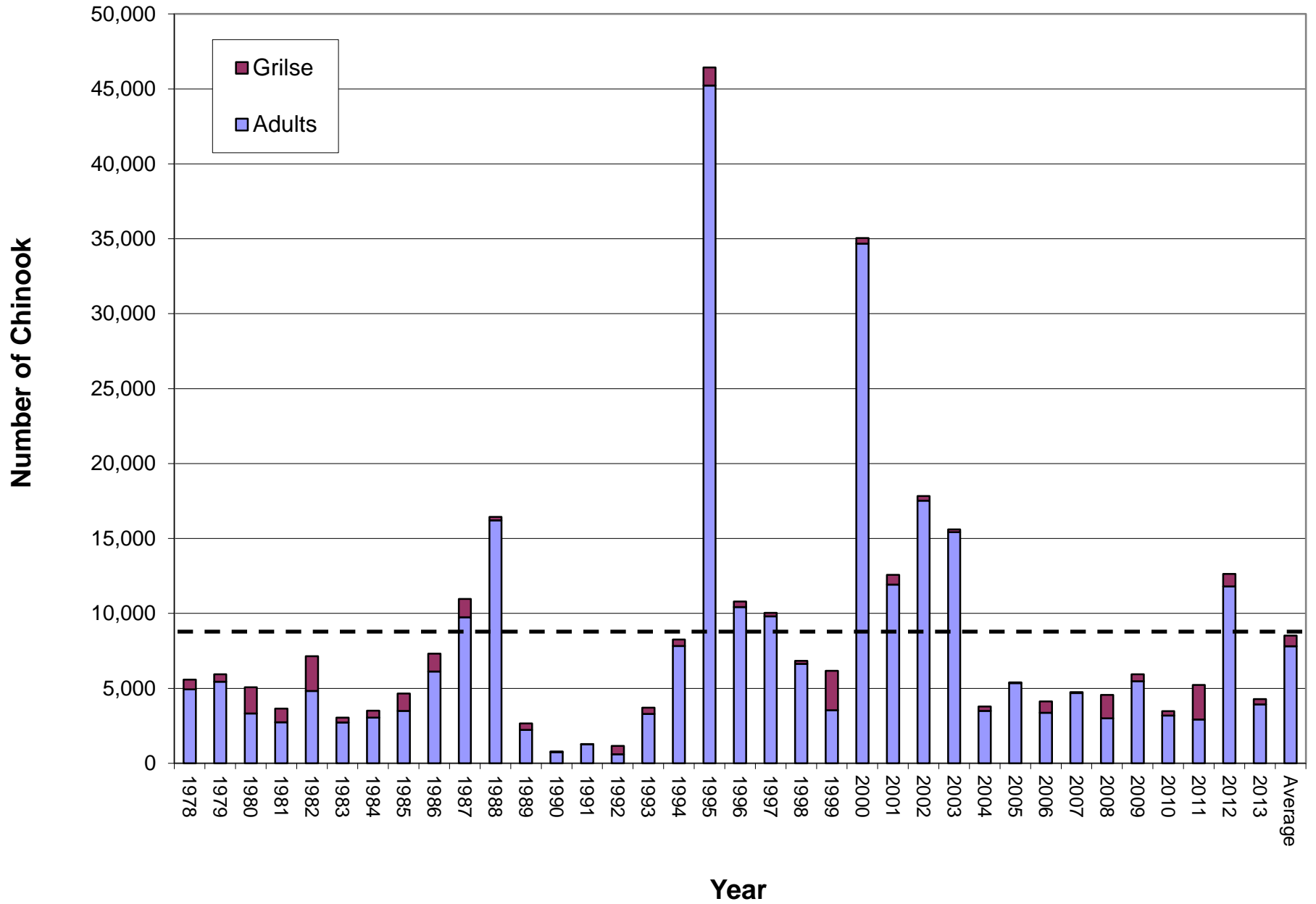
Klamath River Basin Fall Chinook Run Size, 1978-2013



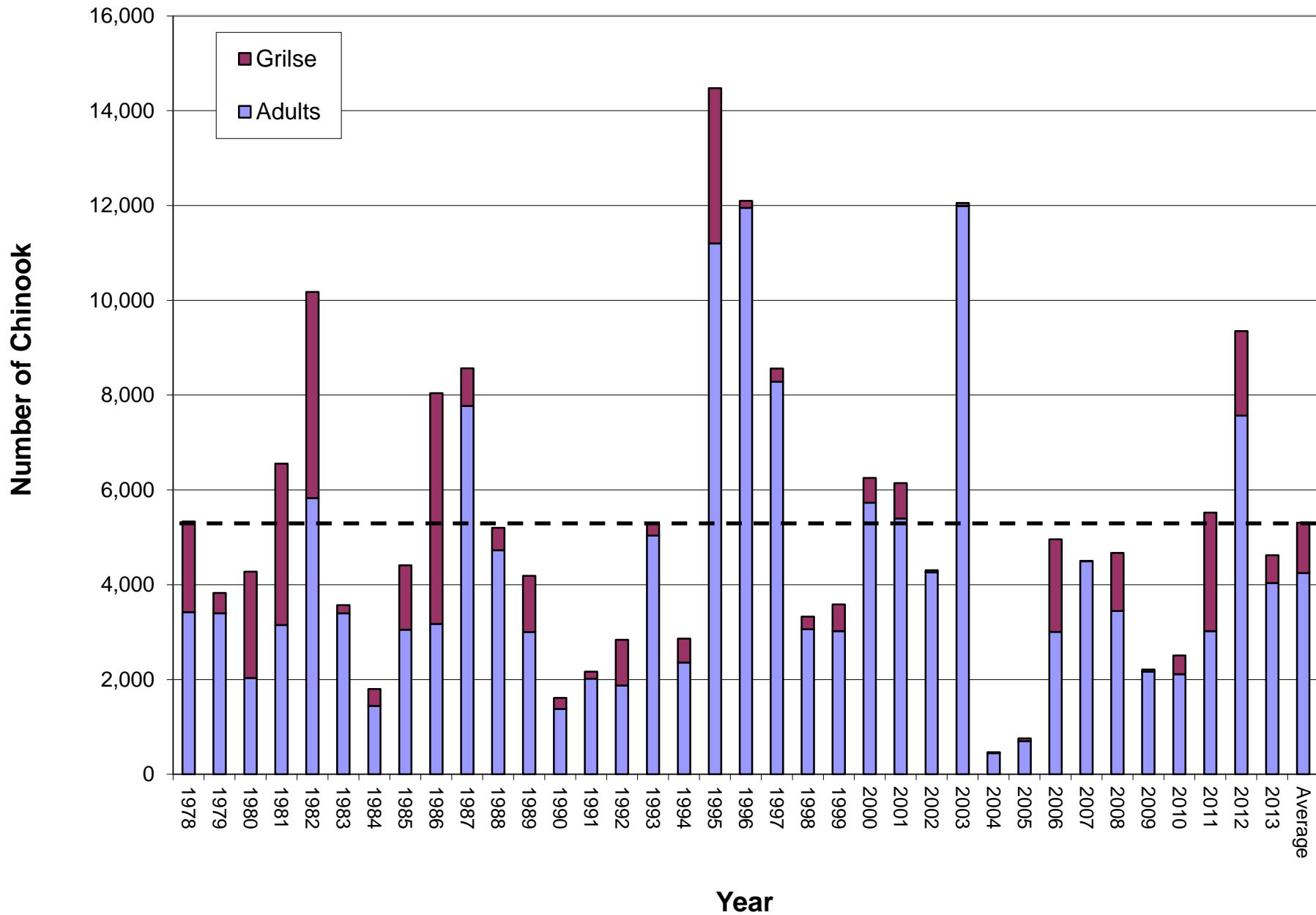
Klamath River Basin Fall Chinook Hatchery Spawners, 1978-2013



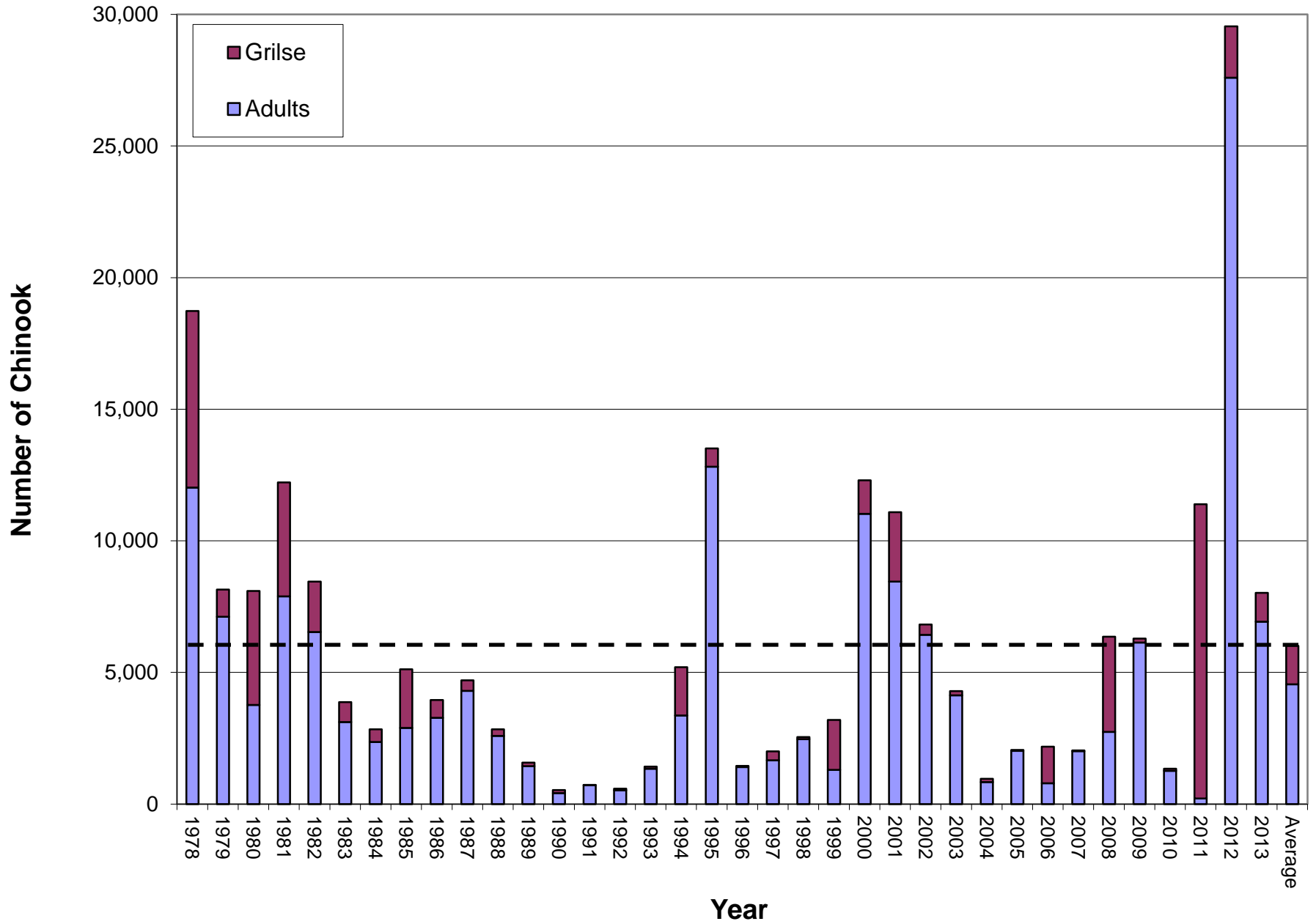
Bogus Creek Fall Chinook, 1978-2013



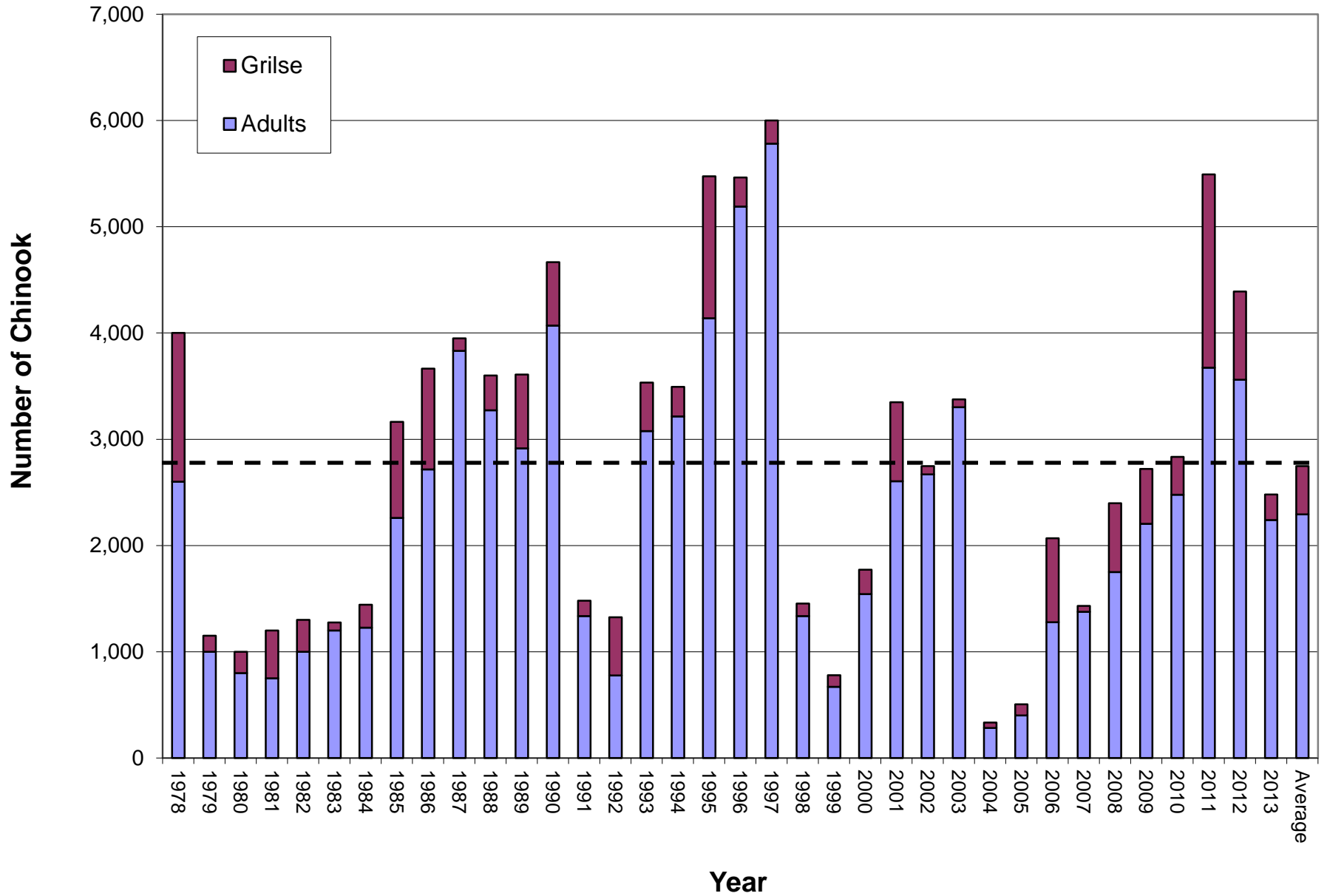
Scott River Fall Chinook, 1978-2013



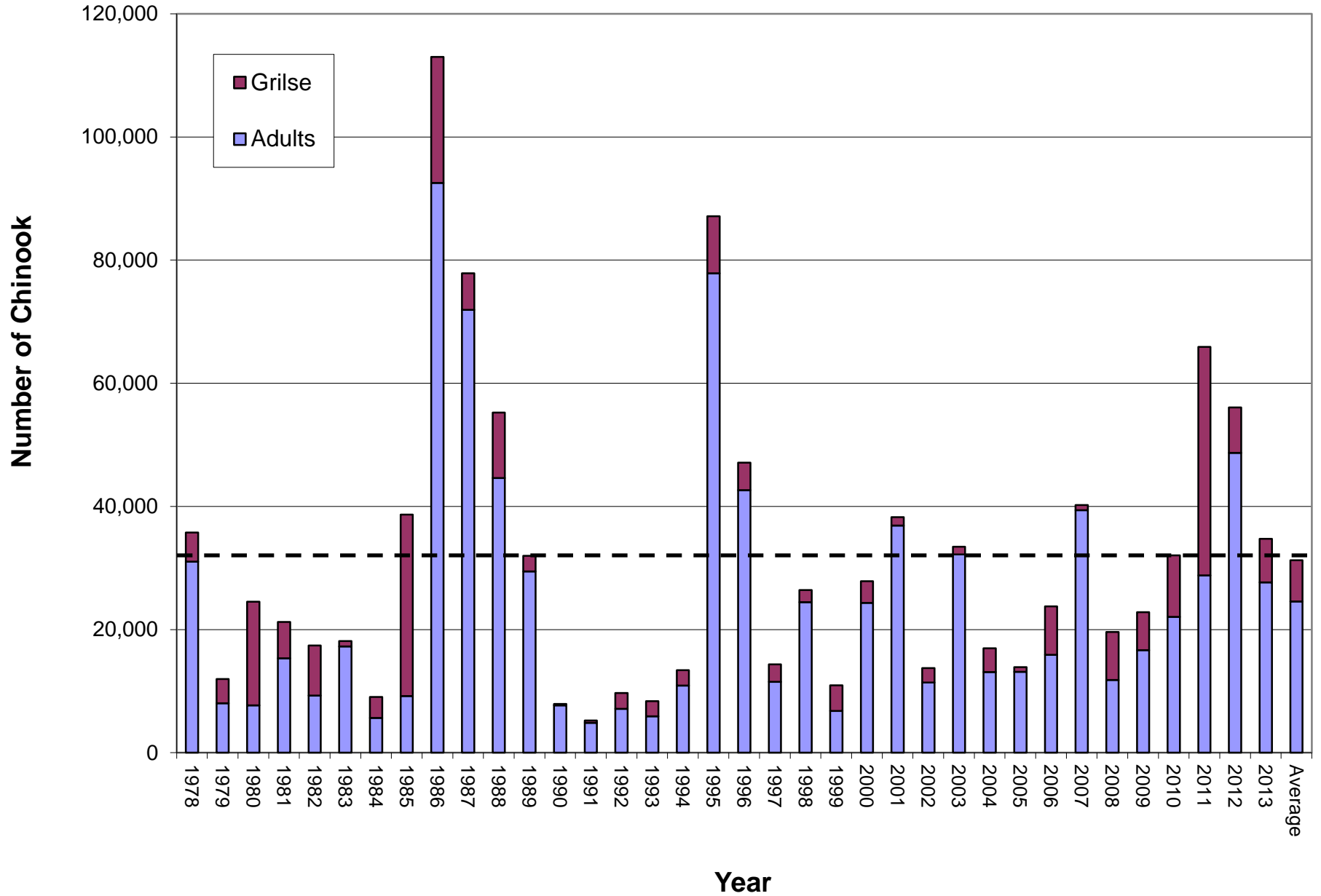
Shasta River Fall Chinook, 1978-2013



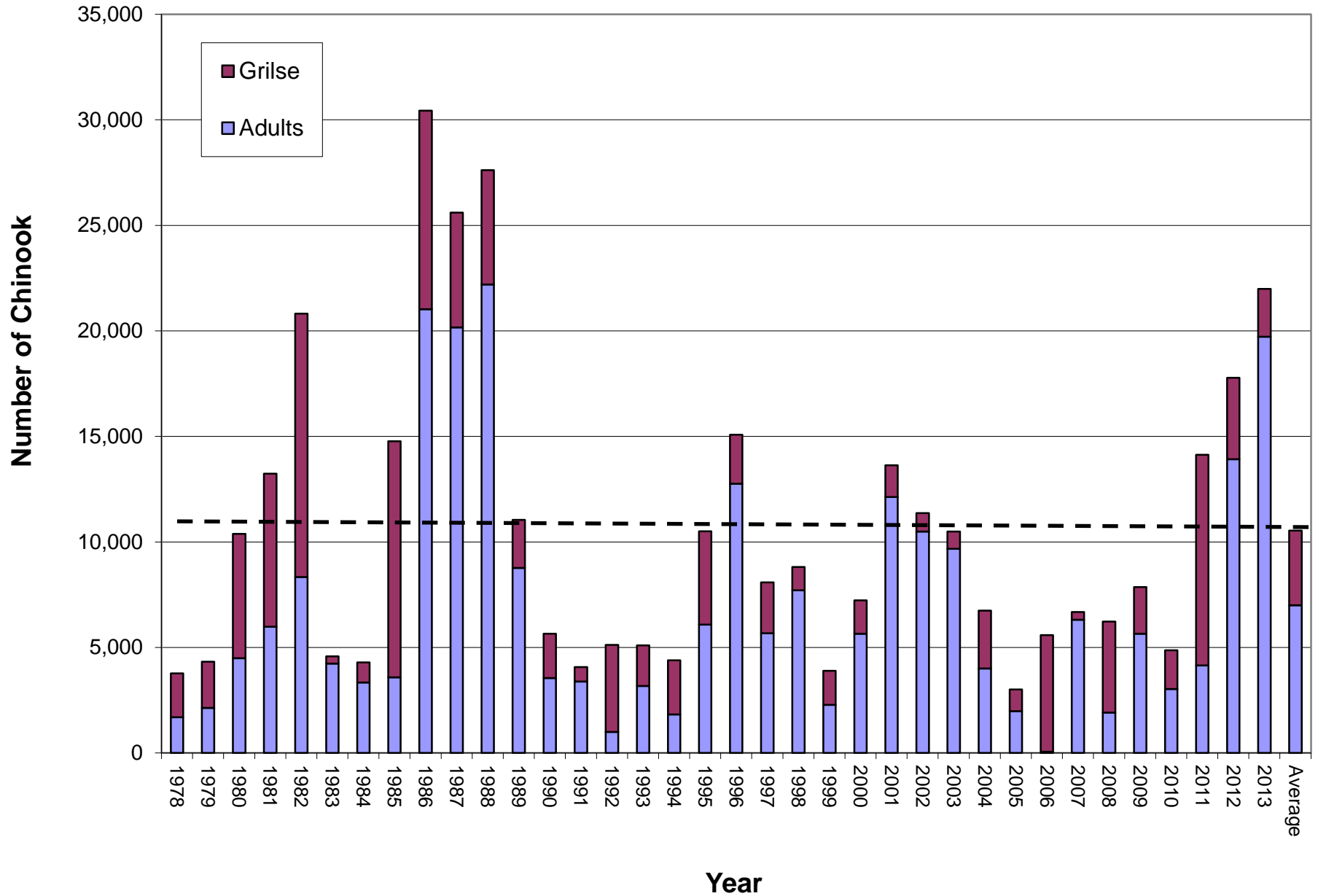
Salmon River Fall Chinook, 1978-2013



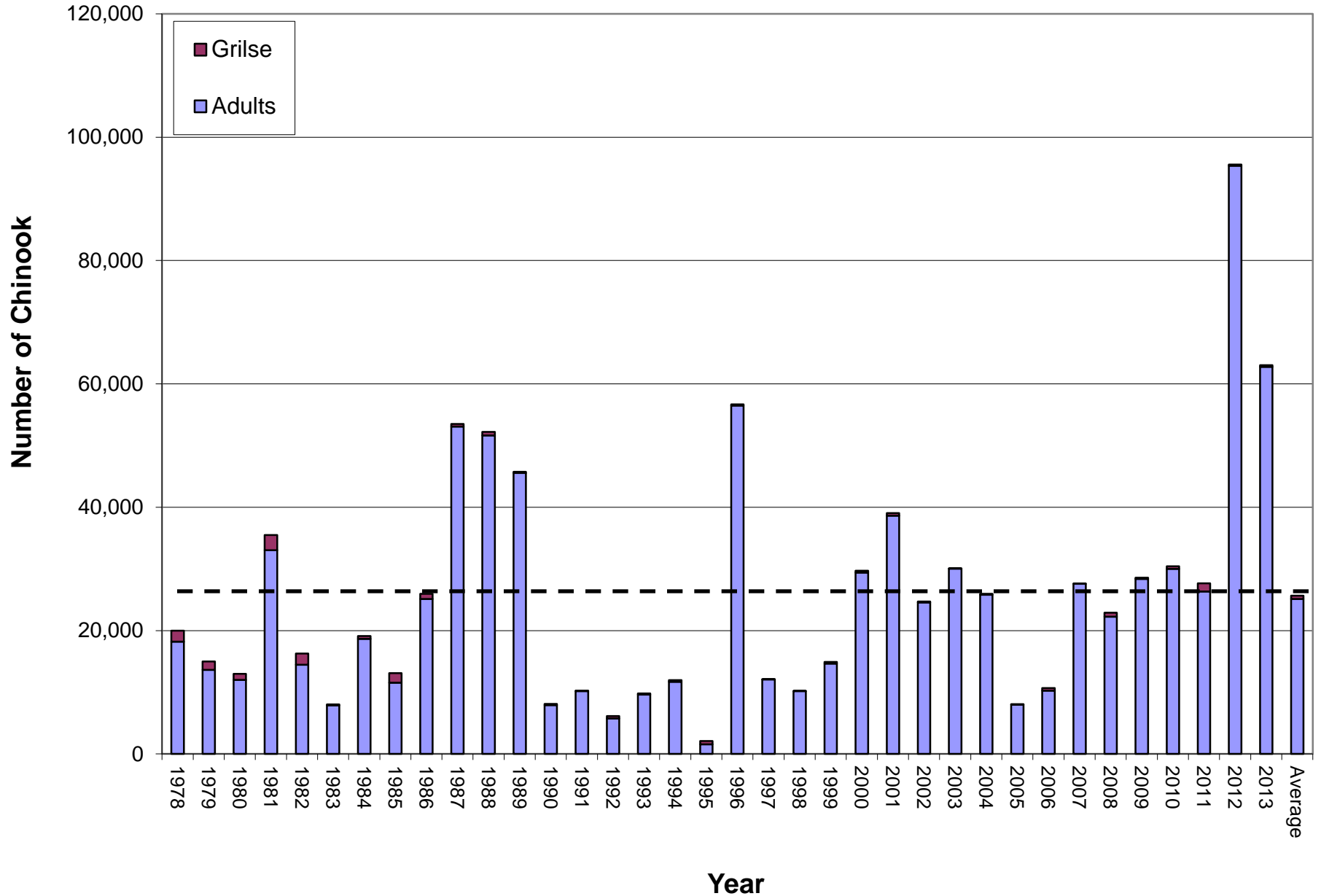
Trinity River Fall Chinook, 1978-2013



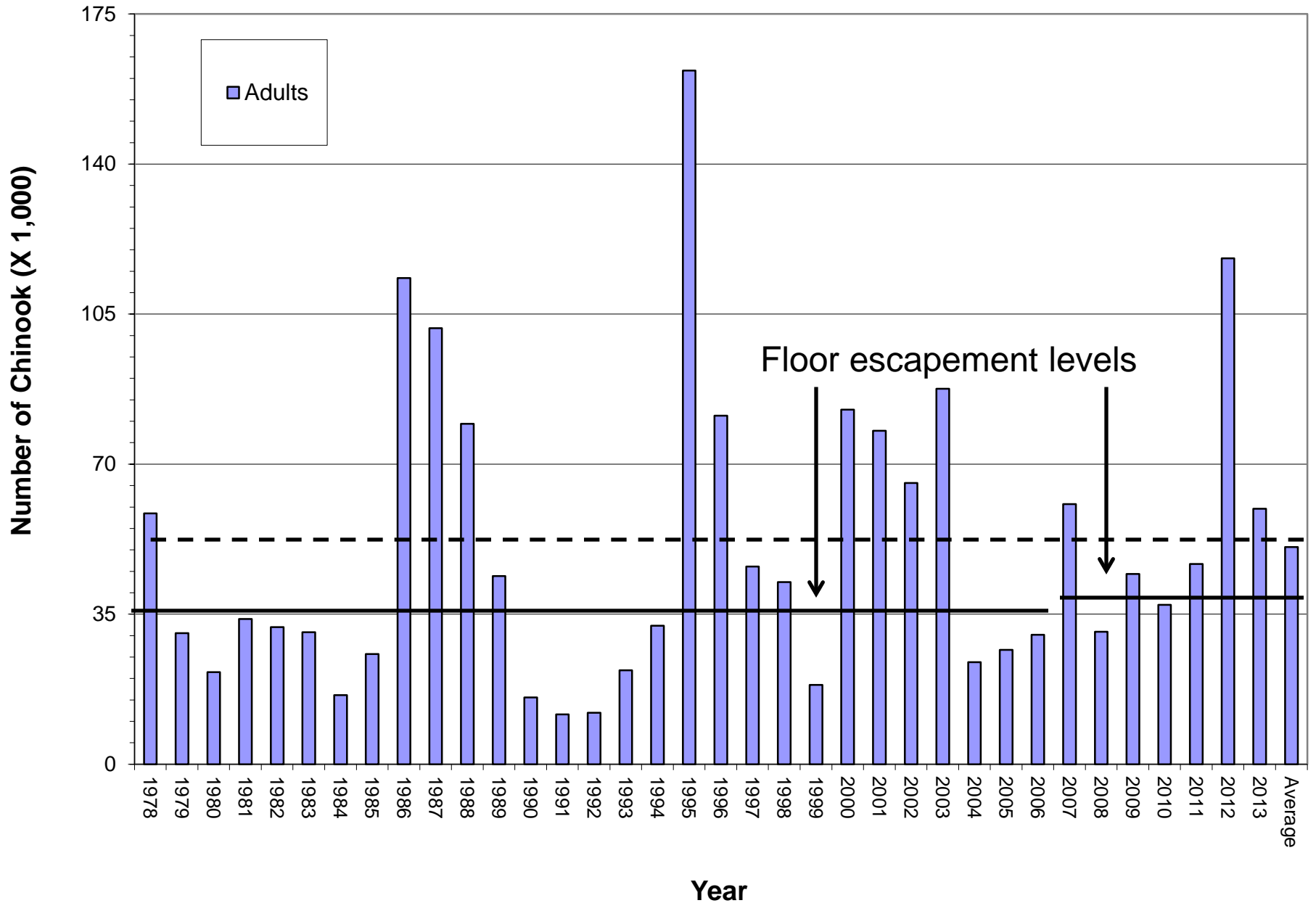
Klamath River Basin Fall Chinook Sport Harvest, 1978-2013



Klamath River Basin Fall Chinook Tribal Harvest, 1978-2013



Klamath River Basin Adult Fall Chinook Natural Area Spawners, 1978-2013




Age composition of the 2013 Klamath River fall Chinook run*.

Escapement & Harvest	AGE				Total Adults	Total Run
	2	3	4	5		
Hatchery Spawners						
Iron Gate Hatchery	1,323	6,743	6,670	18	13,431	14,754
Trinity River Hatchery	135	1,032	2,682	3	3,717	3,852
Hatchery Spawner subtotal	1,458	7,775	9,352	21	17,148	18,606
					10%	10%
Natural Spawners						
Klamath River subtotal	3,298	14,367	17,514	72	31,954	35,252
Trinity River subtotal	7,069	4,740	22,431	494	27,665	34,734
Natural Spawners subtotal	10,367	19,107	39,945	566	59,619	69,986
					36%	39%
Recreational Harvest						
Klamath River harvest	2,213	7,165	11,396	68	18,628	20,841
Trinity River harvest	48	486	600	13	1,100	1,148
Recreational Harvest subtotal	2,261	7,651	11,996	81	19,728	21,989
					12%	12%
Tribal Harvest						
Klamath River harvest	245	18,354	41,040	357	59,750	59,995
Trinity River harvest	16	570	2,440	10	3,019	3,035
Tribal Harvest subtotal	261	18,924	43,480	367	62,769	63,030
					38%	35%
Dropoff Mortality	69	1,802	4,026	33	5,861	5,930
					4%	3%
Total River Run	14,416	55,259	108,799	1,067	165,125	179,541
	8.0%	30.8%	60.6%	0.6%		

*KRTAT 2014

2013 Preliminary results/findings

- The 2013 Klamath Basin fall Chinook run estimate ranks 11th out of 36 years.
- Adult Chinook returns to the basin were 60% of the preseason forecast, however, floor natural escapement level of 40,700 was surpassed.
- Tribal and in-river sport fisheries did not harvest their respective adult quotas.
- The number of jacks, 14,416 is slightly below average for the time series.
- The strong 2009 cohort that led to a record high abundance of 3 yr-old adults in 2012, contributed to a strong 4-yr old return in 2013 (60.6 % of total run).

A large school of salmon swimming in clear, shallow water. The water is a vibrant blue-green color, and the fish are densely packed in the center and lower right of the frame. The background shows a forested shoreline with green foliage.

Contributors:

-CDFW (KTP, OSP)

-Hoopa Valley Tribal Fisheries

-Yurok Tribal Fisheries

-Quartz Valley Tribal Fisheries

-Karuk Tribal Fisheries

-MKWC

-SRRC

-USFWS

-USFS

-NOAA

-Schools

-Landowners

-SFRA

-TRRP