



**NOAA**  
**FISHERIES**

# 2014 Ocean Salmon Fishery Information

California Department of Fish and Wildlife  
Salmon Informational Meeting  
February 26, 2014

Heidi Taylor  
Sustainable Fisheries Division  
West Coast Region

- All guidance preliminary; final at March 2014 PFMC meeting

Indicator Stock	NOAA Guidance
Sacramento River fall Chinook	Follow the FMP-defined control rule, which specifies an expected 2014 escapement greater than or equal to the preseason $S_{ACL}$ of 190,395 hatchery and natural-area adult spawners
Klamath River Fall Chinook	Follow the FMP-defined control rule, which specifies an expected 2014 escapement greater than or equal to the $S_{MSY}$ of 40,700 natural-area adult spawners

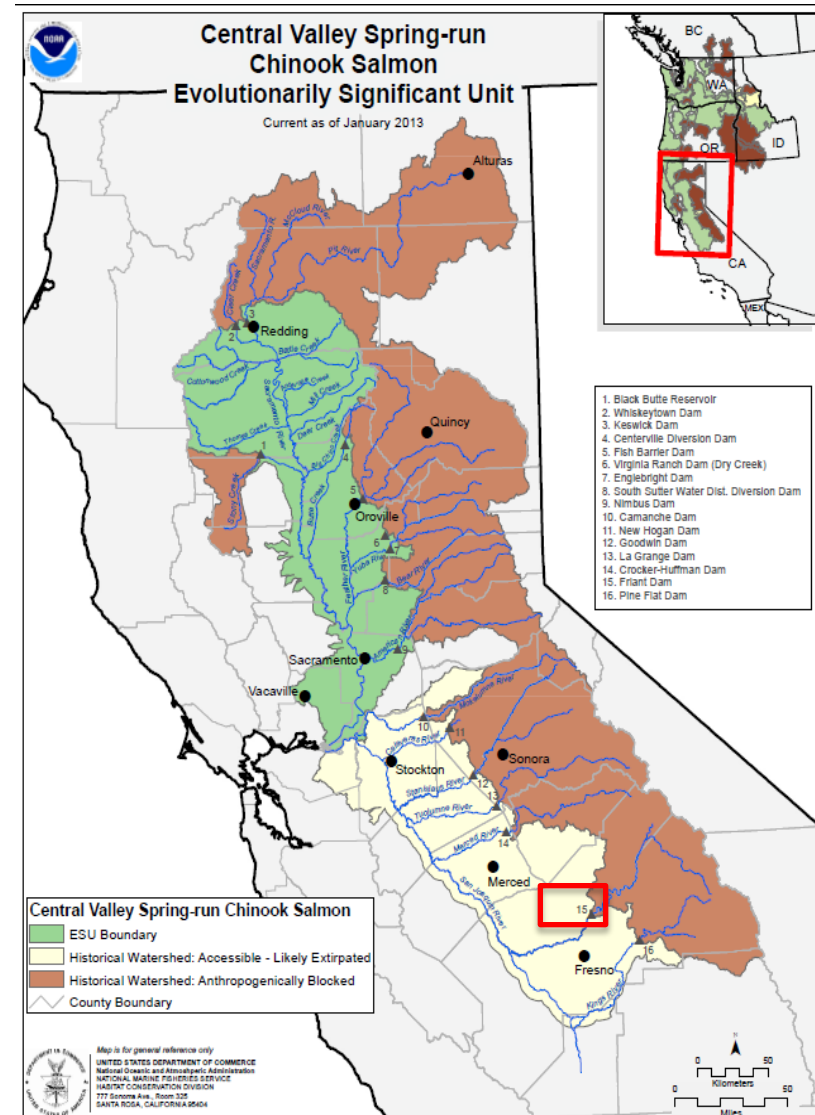
# Endangered Species Act (ESA) Listed Stocks

# Sacramento River Winter Chinook Salmon

- ESA – Endangered
- Final recovery plan likely released spring 2014
- Guidance for 2014:
  - Continuation of consultation standards on minimum size limits and seasonal windows
  - Circle hook restrictions while mooching in the recreational fishery between Horse Mountain and Point Conception
  - Impact rate cap for 2014 = 15.4 %
- Notice of Availability (79 FR 3783) for public comment on the control rules analyzed in the management strategy evaluation

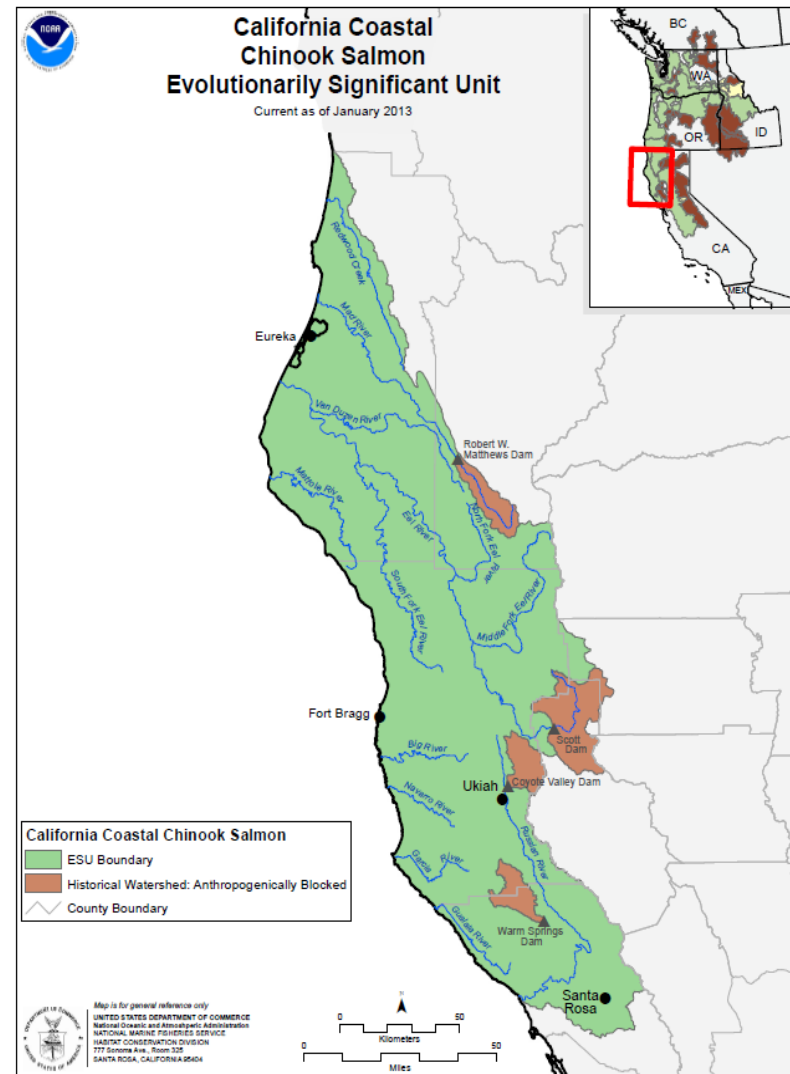
# Central Valley Spring Chinook Salmon

- ESA-threatened
- Final recovery plan likely released spring 2014
- Final rule for establishment of a non-essential experimental population published December 31, 2013
  - Below Friant Dam in San Joaquin River
  - For more information visit: [www.restoresjr.net](http://www.restoresjr.net)



# California Coastal Chinook Salmon

- ESA-threatened
- Draft recovery plan likely available for public comment late summer 2014
- Consultation standard remains at 16% age-4 Klamath River fall Chinook



# Coho Salmon

- Prohibit coho-directed fisheries off CA; Prohibit coho retention in Chinook-directed fisheries off CA

- Southern Oregon/Northern California Coho

- ESA – Threatened
- Likely that final recovery plan will be released in 2014

- Central California Coastal Coho

- ESA – Endangered
- Final recovery plan released 2012

