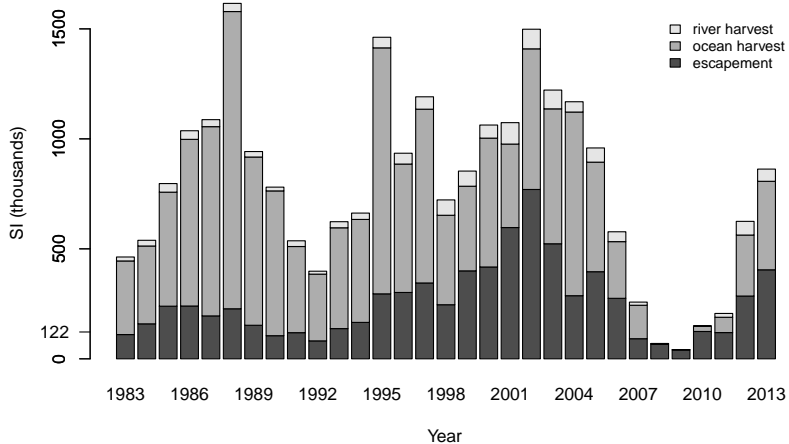
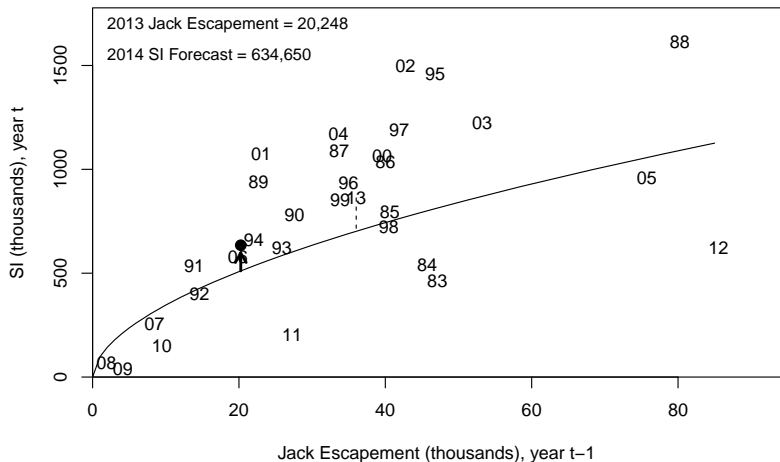


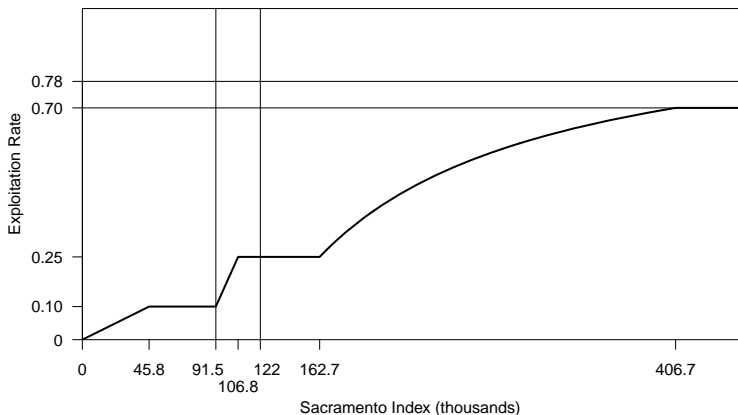
2013 Sacramento Index (SI) estimate: 862,525



2014 SI forecast: 634,650

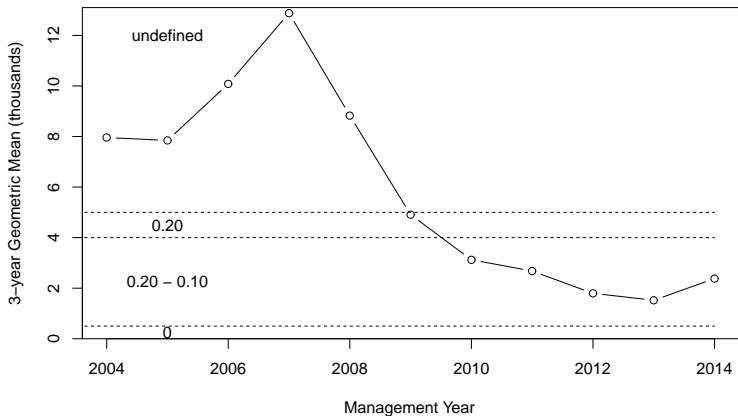


Management context

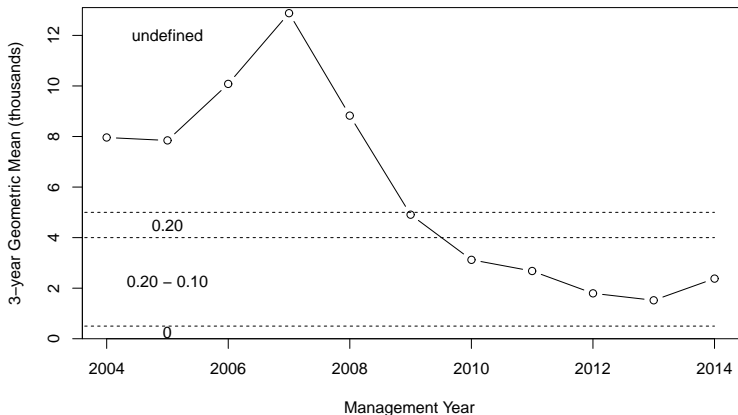


- ▶ Abundance forecast large
- ▶ Must target an escapement of at least 190,395 (max 70% exploitation rate)
- ▶ Unlikely to constrain 2014 fisheries
- ▶ 2013 regs: preliminary prediction of 328,567 spawners

Sacramento River winter Chinook

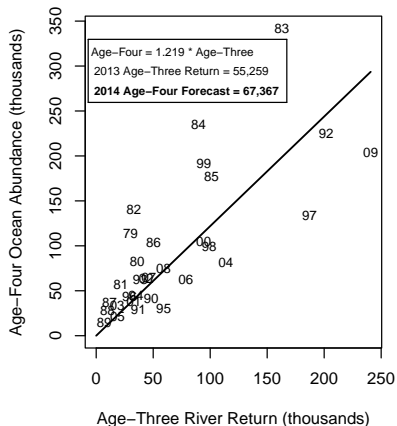
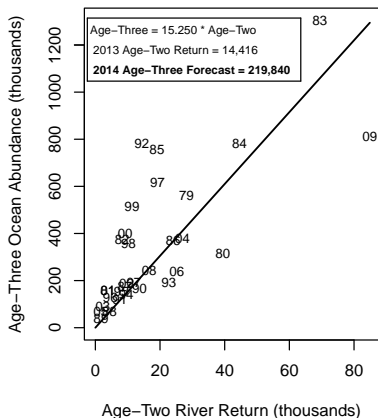


Sacramento River winter Chinook



- ▶ Maximum allowable age-3 impact rate: 15.4%
- ▶ 2013 regs: preliminary prediction of 13.2% age-3 impact rate
- ▶ Likely to constrain fisheries south of Point Arena

2014 Klamath abundance forecast: 299,282



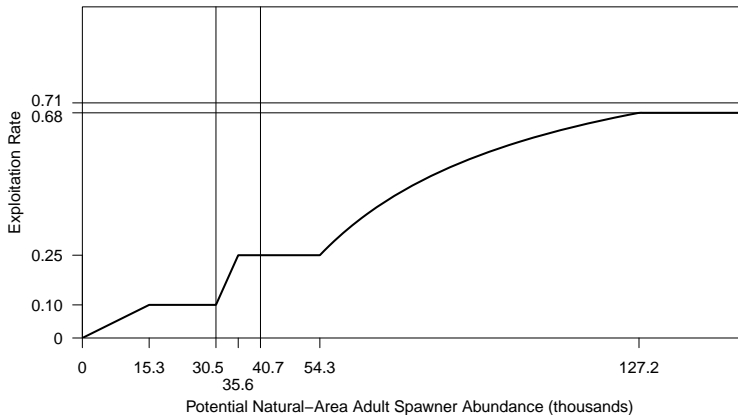
KRFC 2014 abundance forecast:

age-3: 219,840

age-4: 67,367

age-5: 12,075

Management context



- ▶ Potential spawner abundance forecast: 76,952
- ▶ Must target an escapement of at least 40,700 (47% exploitation rate)

Management context, contd.

2013 regs:

- ▶ Tribal allocation: 50% of total harvest
- ▶ River recreational allocation: 35% of non-tribal harvest
- ▶ Natural-area adult spawners = 19,218
- ▶ Exploitation Rate = 0.75
- ▶ Age-4 ocean harvest rate = 19.4

Management context, contd.

2013 regs:

- ▶ Tribal allocation: 50% of total harvest
- ▶ River recreational allocation: 35% of non-tribal harvest
- ▶ Natural-area adult spawners = 19,218
- ▶ Exploitation Rate = 0.75
- ▶ Age-4 ocean harvest rate = 19.4

2013 regs with more 'typical' river recreational allocation

- ▶ Tribal allocation: 50% of total harvest
- ▶ River recreational allocation: 15% of non-tribal harvest
- ▶ Natural-area adult spawners = 33,890
- ▶ Exploitation Rate = 0.56
- ▶ Age-4 ocean harvest rate = 19.4