

California State Wildlife Action Plan Update 2015

Northern California Interior Coast Ranges

DRAFT STRATEGY: Blue-Oak Foothill Pine



GOALS

1. By 2025, implement plan to increase the recruitment of oaks above current levels in areas where there is currently poor recruitment.
2. By 2025, take actions to increase or restore percolation and decrease runoff (soil sponge) by implementing grazing BMPs
3. By 2025, implement plans to increase the native species diversity and abundance on public lands
4. By 2025, develop and implement plans that mimic natural fire regime in Blue-Oak Foothill Pine habitats by increasing the number of fall control burns on public lands
5. By 2025, develop and implement plan to increase the ratio of native vegetative species to invasive vegetative species on public lands

The State Wildlife Action Plan examines the health of wildlife and prescribes actions to conserve wildlife and vital habitat before they become more rare and more costly to protect. The plan also promotes wildlife conservation while furthering responsible development and addressing the needs of a growing human population.

STRATEGIES, OBJECTIVES AND ACTIVITIES

1. Establish cooperative and co-management partnership
 - a. Objectives
 - i. Develop partnerships with agencies and organizations to enhance conservation opportunities
 - b. Activities
 - i. Formalize relationships with land managers
 - ii. Develop partnerships with private land owners
 - iii. Participate in internal revamping of PLM program
 - iv. Encourage use of SHARE program
 - v. Obtain funding for program implementation and staffing
2. Provide Education & Outreach
 - a. Objectives
 - i. Introduce landowners and leasee to BMPs for grazing
 - ii. Inform public of incentive programs available to them
 - iii. Educate recreation focused landowners on Wildlife-BMP's
 - b. Activities
 - i. Outreach to landowner regarding programs
 - ii. Develop comprehensive web-site
 - iii. Conduct workshops
 - iv. Identify and obtain sustainable funding sources
 - v. Develop key messages
 - vi. Develop partnerships with other agencies/organizations
 - vii. Develop cooperative agreement amongst agencies/organizations
3. Provide economic incentives
 - a. Objectives
 - i. Provide economic incentives
 - b. Activities
 - i. Identify what incentive programs are available
 - ii. Identify opportunities for partnerships
 - c. Evaluation of candidate ranches
 - i. Monitoring of effectiveness and compliance
 - ii. Review and update PLM program
 - iii. Obtain funding for program implementation
 - iv. Fund Priority projects
4. Conservation easements
 - a. Objectives
 - i. Protect ecologically high value habitat through Conservation Easement.
 - b. Activities
 - i. Develop conservation strategy for ecoregion
 - ii. Communicate with willing landowners
 - iii. Develop CAPP or LAE
 - iv. Evaluate consistency with regional priorities
 - v. Obtain funding for program implementation (staff), acquisition of CE and restoration

SENSITIVE SPECIES

- Osprey
- Tule elk
- River otter
- California red-legged frog
- California tiger salamander
- Peregrine falcon
- Savannah sparrow
- Swainson's hawk
- Golden eagle
- Ringtail cat
- White-tailed kite
- American badger
- Pine marten
- Burrowing owl
- California newt
- California quail
- Hutton's vireo
- Long-eared owl
- Mountain lion
- Northern goshawk
- Pallid bat
- Purple martin
- Ringneck snake
- San Joaquin pocket mouse
- Spotted towhee
- Western pond turtle
- Western skink
- Western spotted skunk
- Yellow warbler
- Bald eagle
- Tri-color blackbird

ENVIRONMENTAL STRESSES

- Change in annual average temperatures
- Change in annual average precipitation
- Changes in natural fire regime
- Changes in soil moisture
- Changes in community structure or composition
- Loss or change in biotic interactions (altered community dynamics)
- Changes in succession processes and ecosystem development

HUMAN RELATED IMPACTS

- Inappropriate Livestock Farming and Ranching
- Invasive plants/animals
- Fire and Fire Suppression
- Recreational activities



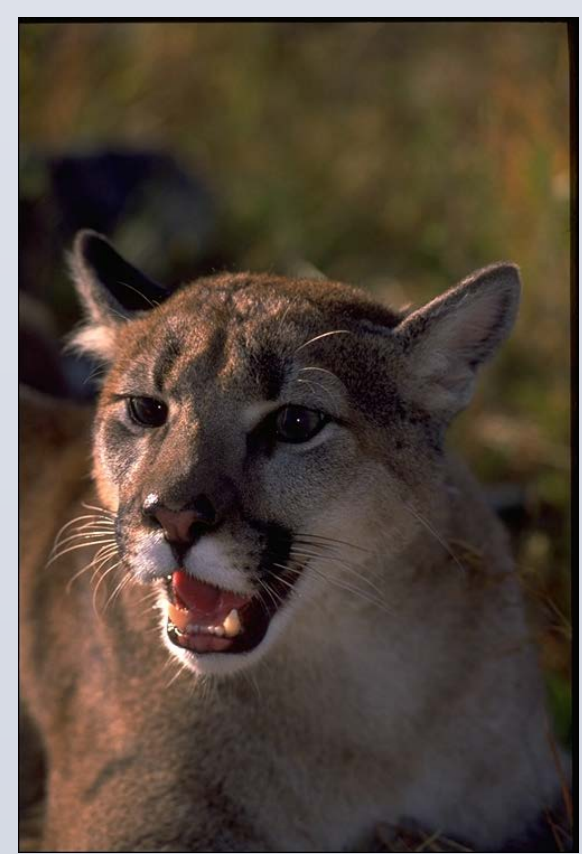
Tule elk © 2012 Ron Wolff



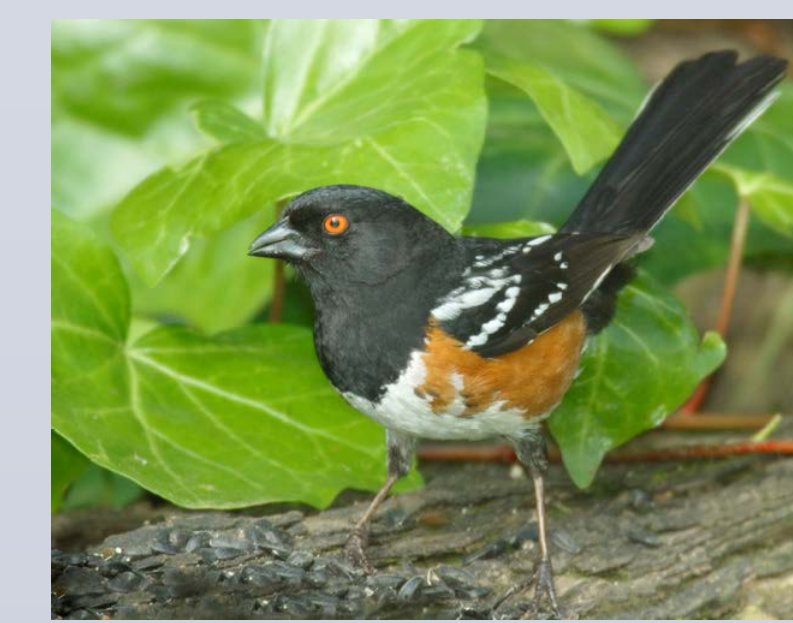
California tiger salamander © 2007 Danté B Fenolio



California burrowing owl © 2007 John White



Mountain lion. Gerald and Buff Corsi © California Academy of Sciences



Spotted towhee © 2003 Jim Dunn



Name	Organization	Roles
Paul Hofmann	CDFW-R2	Team Member
Joshua Bush	CDFW-R2	Leader/Manager
Greg Giusti	U.C. Davis	Team Member

