

California State Wildlife Action Plan Update 2015

Sonoran Desert Ecoregion

DRAFT STRATEGY: Desert Scrub



GOALS

1. By 2025 see 10% of the disturbed conserved areas showing signs of successional dynamics or recovery.
2. By 2025, 25 to 50 percent of the area of the macrogroup is composed of primarily native species.
3. By 2025, At least 25% area of the macrogroup found in the Sonoran desert ecoregion is conserved.
4. By 2025, diet changes due to climate change and seasonal variation is reduced by at least 10% throughout the ecoregion.
5. By 2025, preserve at least 3 major corridors within the Sonoran Ecoregion that will provide for species and genetic exchange.
6. By 2025, there is a 10% increase endemic plant/animal species diversity and conserved habitats provide diverse structural diversity

The State Wildlife Action Plan examines the health of wildlife and prescribes actions to conserve wildlife and vital habitat before they become more rare and more costly to protect. The plan also promotes wildlife conservation while furthering responsible development and addressing the needs of a growing human population.

STRATEGIES, OBJECTIVES AND ACTIVITIES

1. Provide input on project planning and decision making process
 - a. Objectives
 - i. To conserve desert scrub habitat through participation in the planning and decision making processes
 - b. Activities
 - i. Conduct environmental (CEQA/NEPA) review
 - ii. Participate in review of general plans/amendments
 - iii. Develop master 1600 permit template consistent with strategy
 - iv. Develop standard permit requirements/criteria
 - v. Identify and prioritize areas for conservation/protection
 - vi. Encourage establishment of mitigation banks
 - vii. Develop mitigation alternatives consistent with strategy
 - viii. Define success criteria for adaptive management
 - ix. Obtain funding to maintain mitigation areas
 - x. Conduct PAR analysis for mitigation sites
2. Partner for joint advocacy
 - a. Objectives
 - i. Increase political awareness for conservation of desert scrub in the Sonoran Desert ecoregion
 - ii. Solicit additional funding through grants or legislation
 - iii. Advocate for development consistent with strategy
 - b. Activities
 - i. Coordinate with WCB, OCEO, Leg Office
 - ii. Conduct bill analysis related to housing and urban development
 - iii. Identify partners (NGOs) to advocate position
 - iv. Advocate science based decisions and process
 - v. Develop development BMPs
 - vi. Identify and prioritize conservation areas
 - vii. Conduct economic impact analysis
 - viii. Obtain funding to implement strategy
3. Develop HCP, NCCP and management plans
 - a. Objectives
 - i. Minimize the impact of housing and urban growth through the establishment of conservation plans
 - b. Activities
 - i. Identify areas and SCGN species to be conserved
 - ii. Identify partners in plans
 - iii. Obtain funding
 - iv. Coordinate with stakeholder, conduct public review and respond to comments
 - v. Conduct appropriate environmental review
 - vi. Evaluate efficacy of establishing mitigation banks
 - vii. Develop regional specific management plans
4. Establish co-management partnership
 - a. Objectives
 - i. Establish cooperative partnership with all interested groups to conserve habitat target.
 - ii. Partnership effectively conserves habitat and species
 - iii. Increased funding opportunity through combined resources
 - iv. Share management responsibilities
 - v. Develop and share baseline data for conservation of SCGN
 - b. Activities
 - i. Identify and contact NGO's interested in conserving habitat.
 - ii. Create working alliance between all interested parties (BLM, CDFW, and NGO's). Others to consider include NPS and CLNWS.
 - iii. Identify conservation needs of desert scrub habitat.
 - iv. Identify funding sources to implement projects

SENSITIVE SPECIES

- Large-billed savannah sparrow
- Couch's spadefoot
- Tricolored blackbird
- Short-eared owl
- Long-eared owl
- Burrowing owl
- Swainson's hawk
- Snowy plover
- Northern harrier
- Yellow warbler
- Willow flycatcher
- California condor
- Yellow-breasted chat
- Loggerhead shrike
- Summer tanager
- Purple martin
- Vermillion flycatcher
- Bank swallow
- Bendire's thrasher
- Crissal thrasher
- Lucy's warbler
- Least Bell's vireo
- Gray vireo
- Yellow-headed blackbird
- Pronghorn antelope
- Pallid bat
- Mojave ground squirrel
- Western mastiff bat
- Western yellow bat
- California leaf-nosed bat
- Mojave River vole
- Southern grasshopper mouse
- Bighorn sheep
- American badger
- Red diamond rattlesnake
- Desert tortoise
- Gila monster
- Flat-tailed horned lizard
- California legless lizard
- Mojave fringe-toed lizard
- Golden eagles

ENVIRONMENTAL STRESSES

- Changes in annual average temperatures increase
- Changes in annual average precipitation
- Changes in summer average precipitation
- Altered spatial distribution of habitat types
- Changes in community structure or composition
- Loss or change in biotic interactions
- Habitat fragmentation
- Change in frequency or intensity of extreme events (e.g. droughts)

HUMAN RELATED IMPACTS

- Renewable Energy
- Annual and Perennial Non-Timber Crops
- Housing and Urban Areas
- Invasive plants/animals
- Roads & Railroads
- Utility & Service Lines



Couch's spadefoot © 2003 Brad Moon



Burrowing owl © 2005 Tom Greer ttpphotos@comcast.net



Summer tanager © 2008 Ron Wolf



Pronghorn antelope © 2011 Don Getty



Bighorn sheep Dr. K.T. Rogers © California Academy of Sciences



Bull thistle. Photo courtesy of Bob Case



Wind energy



Desert agriculture



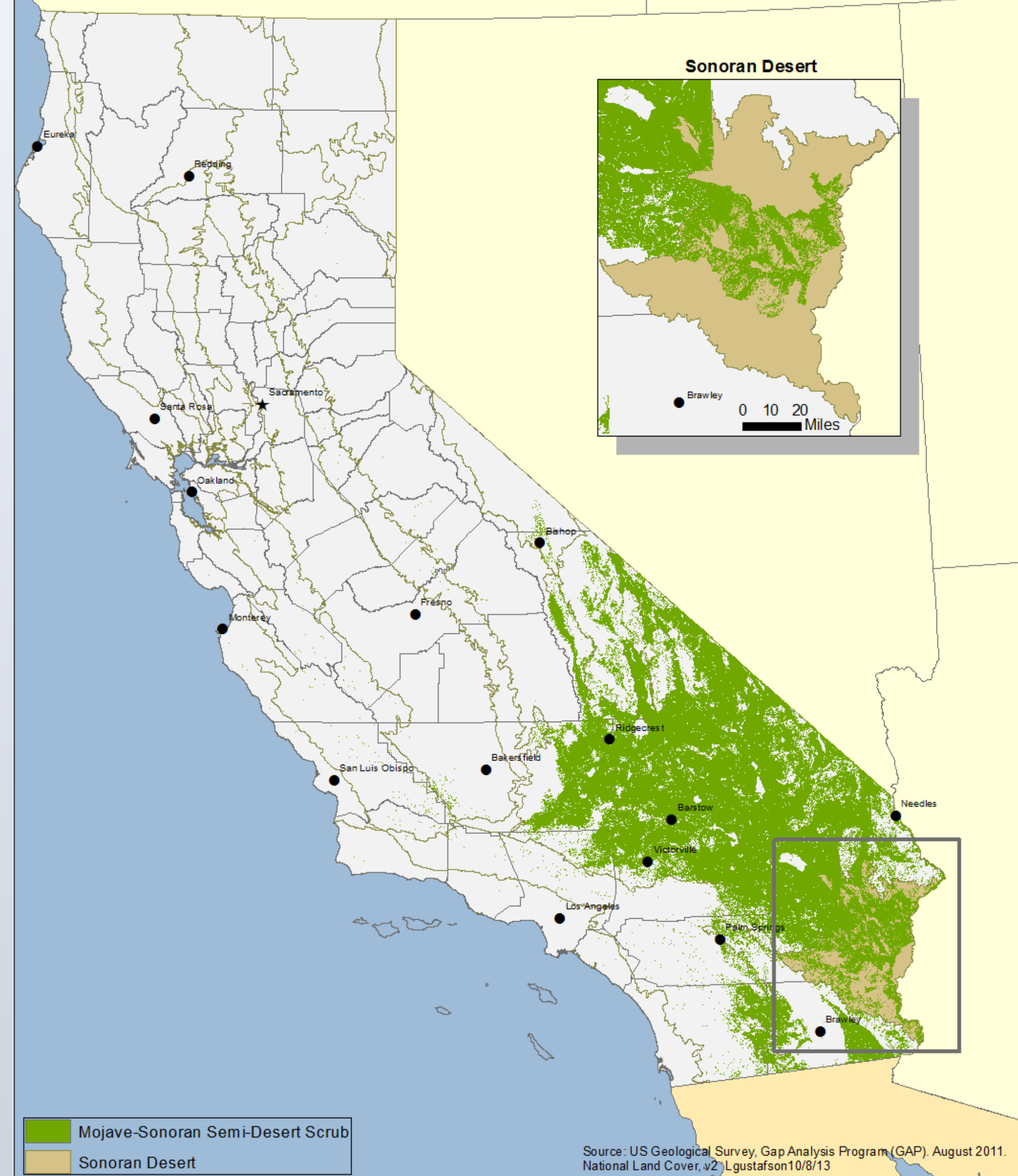
Railroads



Transmission lines

Mojave-Sonoran Semi-Desert Scrub

National Vegetation Standard Macrogroup



TEAM



Name

- Gerald Mulcahy
- Charlie Land
- Cameron Barrows
- Junko Hoshi
- Mike Giusti
- Jack Crayon
- Karen Rieze
- Jane McKeever

Organization

- CDFW-R6
- CDFW-R6
- UC Riverside
- CDFW-HCPB
- CDFW-R6
- CDFW-R6
- CDFW-R6
- CDFW-R6

Name

- Team member
- Team member
- Team member
- Team member
- Team Leader
- Team member
- Team member
- Team member

