

California State Wildlife Action Plan Update 2015

Colorado Desert

DRAFT STRATEGY: Madrean Warm Semi-Desert Wash Woodland/Scrub; Desert Wash



GOALS

1. By 2025, see an increase in water availability by reconstructing natural flow regimes.
2. By 2025, area of the community distributed throughout the Colorado Desert is maintained.
3. By 2025, endemic plant/animal species diversity and structural diversity is improved.
4. By 2025, negative impacts to Couch's spadefoots, from roads and railroads Operation and Maintenance (O&E) projects, are reduced by 20%.
5. By 2025, see natural erosion-deposition regimes recognized and supported by responsible agencies.

The State Wildlife Action Plan examines the health of wildlife and prescribes actions to conserve wildlife and vital habitat before they become more rare and more costly to protect. The plan also promotes wildlife conservation while furthering responsible development and addressing the needs of a growing human population.

STRATEGIES, OBJECTIVES AND ACTIVITIES

1. Develop BMPs for Roads and Railroads
 - a. Objectives
 - i. Protection of SGCNs via implementation of BMPs
 - ii. Avoid and/or minimize adverse effects to KEA from Railroad ROW maintenance and repair
 - iii. Avoid and/or minimize adverse effects to KEA from Caltrans construction and repair
 - b. Activities
 - i. Coordinate with state, federal, local agencies
 - ii. Establish working groups to develop BMPs
 - iii. Identify priority management actions
 - iv. Identify and map sensitive areas
 - v. Link to Education and outreach plan
 - vi. Obtain funding for implementation
2. Provide education
 - a. Objectives
 - i. Create awareness within BLM and USFWS of state SGCNs in the RR ROW, and impacts from O and M.
 - b. Activities
 - i. Develop message
 - ii. Identify target audience
 - iii. Identify and coordinate with partner agencies and organizations
 - iv. Obtain funding for implementation
3. Gather baseline data and conduct research
 - a. Objectives
 - i. Gather ecological/biological data on species and response of species to disturbance
 - b. Activities
 - i. Conduct literature review-develop study design
 - ii. Define distribution of SGCNs
 - iii. Define movement and habitat use patterns of SGCNs
 - iv. Determine extent of disturbance from railroad use
 - v. Determine SGCN-friendly structure designs
 - vi. Develop budget
 - vii. Identify funding sources and apply for funding
4. Partner for joint advocacy
 - a. Objectives
 - i. Educate and engage BLM re: CA listed species and threats from RR activities
 - ii. BLM influences Railroads
 - b. Activities
 - i. Coordinate with state, federal, local agencies
 - ii. Define advocacy message/plan
 - iii. Establish priorities for sensitive areas
 - iv. Identify partner agencies and organizations

SENSITIVE SPECIES

- Couch's Spadefoot
- Desert Bighorn Sheep
- Burro Deer
- American Badger
- Kit Fox
- Desert Tortoise
- Colorado Fringe-toed Lizard
- Flat-tailed Horned Lizard
- Coachella Valley Fringe-toed Lizard
- Red Diamond Rattlesnake
- Loggerhead Shrike
- Cooper's Hawk
- Burrowing Owl
- Crissal Thrasher
- Le Conte's Thrasher



Couch's spadefoot © 2003 Brad Moon



Burrowing owl © 2005 Tom Greer ttpphotos@comcast.net



Desert kit fox © 2010 Benjamin Smith



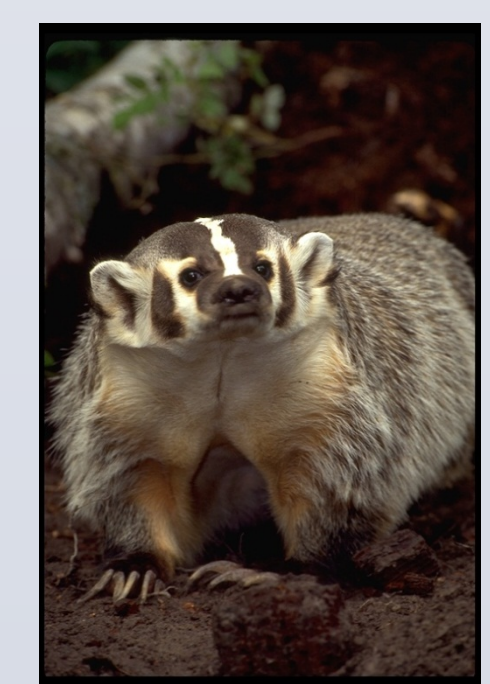
Desert tortoise. Gerald and Buff Corsi © California Academy of Sciences



Bighorn sheep Dr. K.T. Rogers © California Academy of Sciences



Crissal Thrasher © 2007 Stephen Dowlan



American badger. Gerald and Buff Corsi © California Academy of Sciences



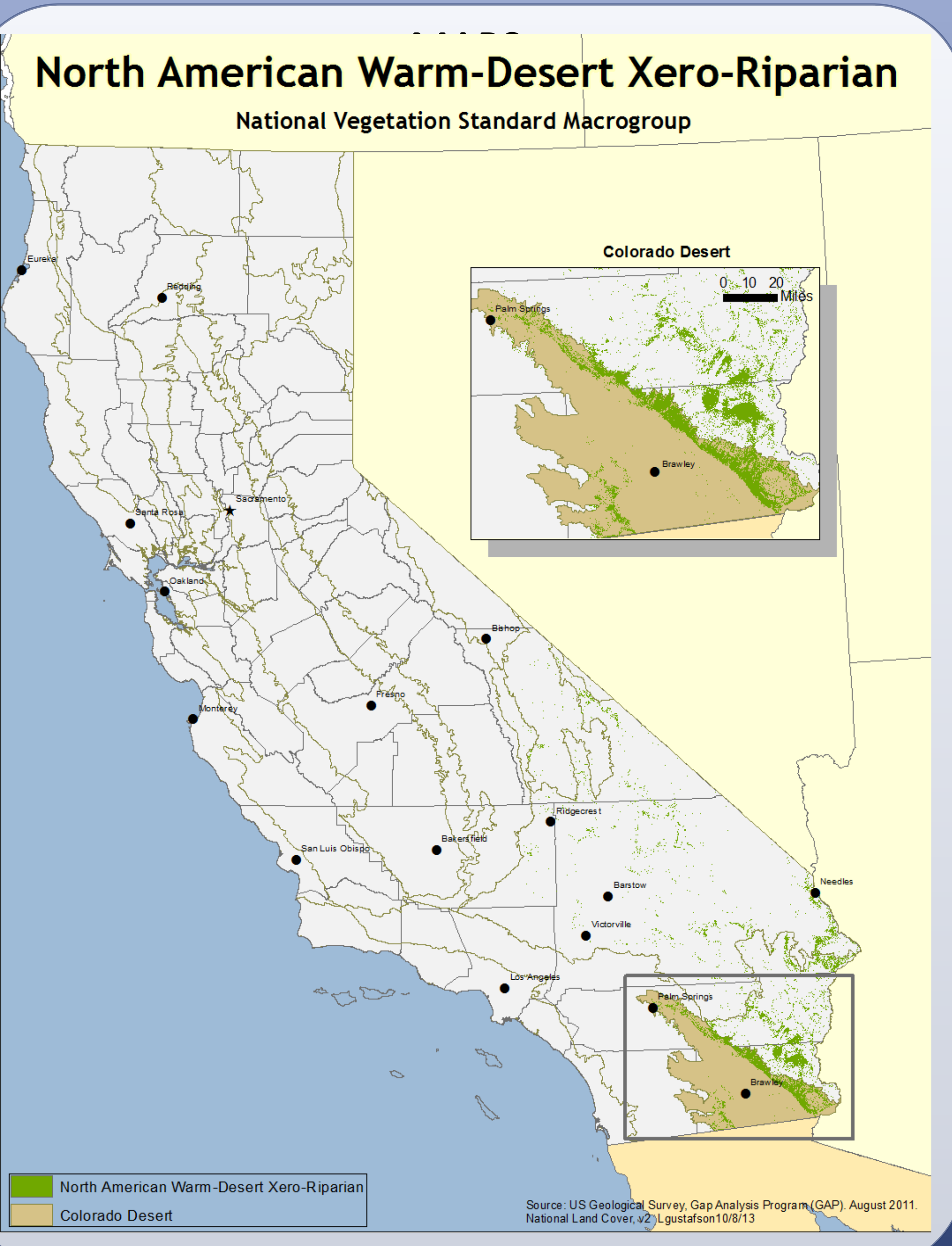
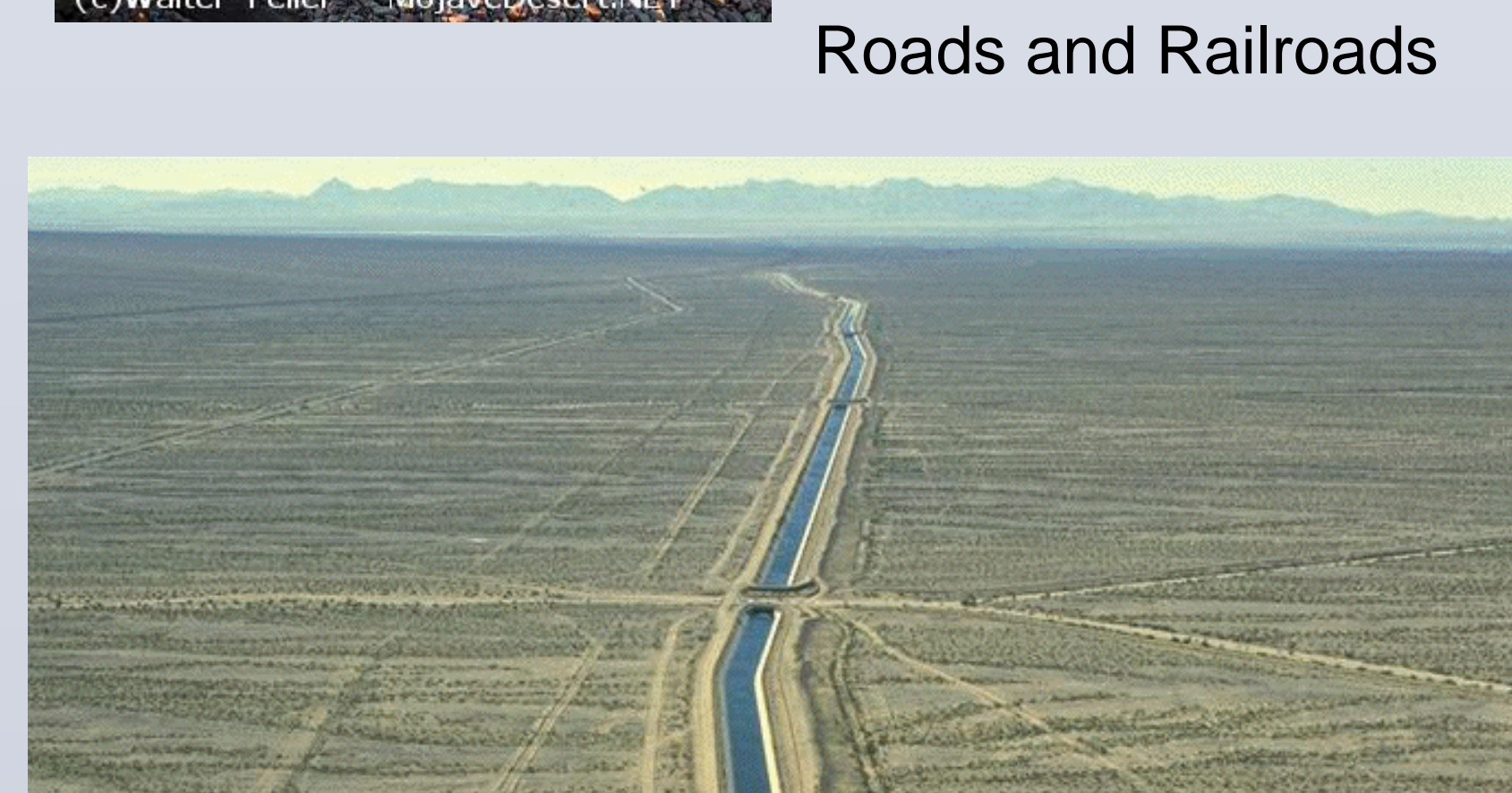
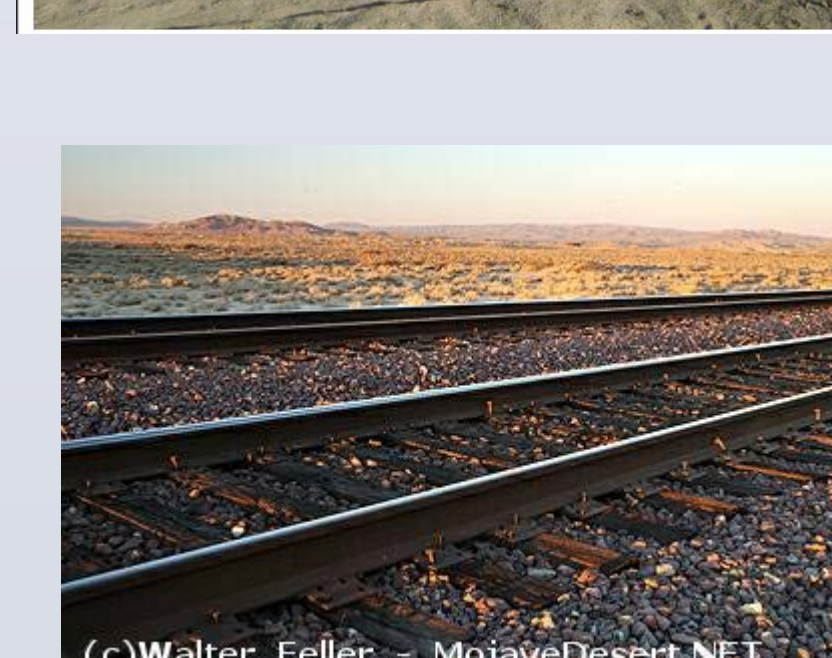
Flat-tailed Horned Lizard © 2011 Sam Murray

ENVIRONMENTAL STRESSES

- Change in annual average temperatures increase
- Change in annual average precipitation
- Change in summer average precipitation
- Altered spatial distribution of habitat types
- Change in community structure or composition
- Loss or change in biotic interactions
- Change in succession processes and ecosystem development
- Habitat fragmentation
- Average winter precipitation
- Change in temp extremes
- Change in sediment erosion-deposition regime
- Change in fire regime
- Change in Runoff/River flow
- Change in water levels/Hydroperiod
- Change in Flooding
- Change in Functional Processes

HUMAN RELATED IMPACTS

- Commercial and Industrial Areas
- Mining and Quarrying
- Renewable Energy
- Utility and Service lines
- Incompatible recreational activities
- Military Exercises and Base Expansions
- Housing and Urban Areas
- Tourism & Recreation Areas
- Dams & Water Management/Use
- Roads and Railroads



TEAM



Name	Organization	Role
Becky Jones	CDFW-R6	Team Member;
Junko Hoshi	CDFW-HCPB	Team Member;
Cameron Barrows	UC Riverside	Team Member;
Jack Crayon	CDFW-R6	Team Member;
Judy Hohman	USFWS	Team Member;
Gerald Mulcaby	CDFW-R6	Team Member;
Mike Giusti	CDFW-R6	Leader/Manager; Team Member;
Karen Riesz	CDFW-R6	Team Member;

