



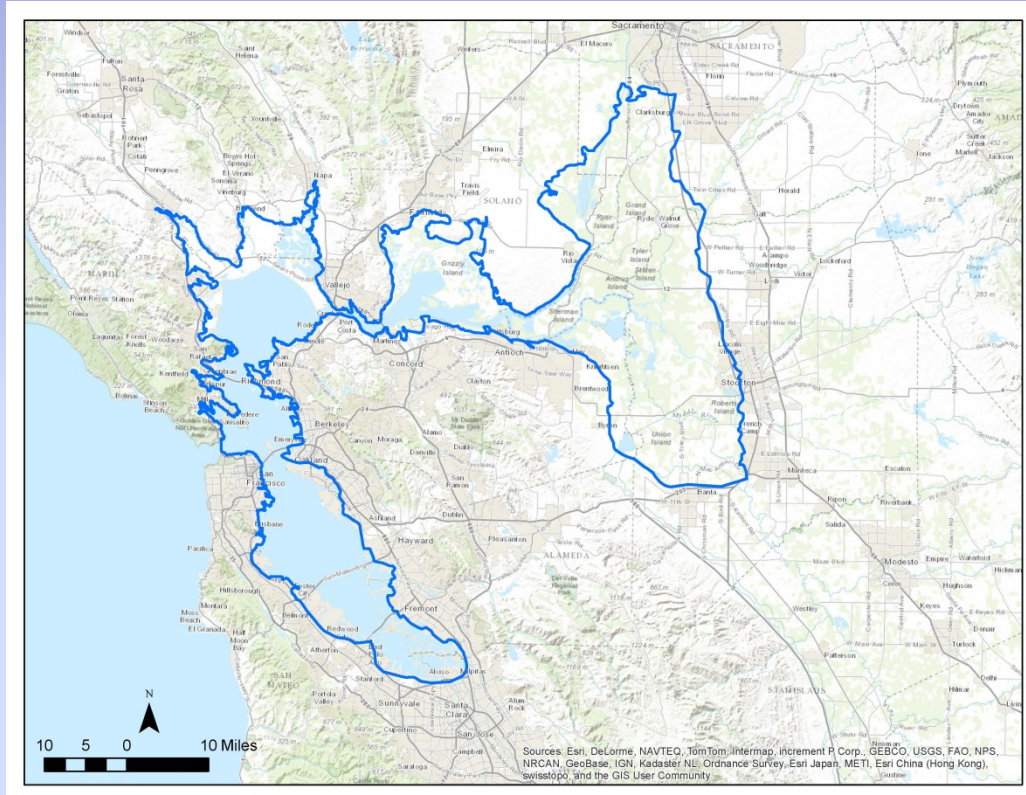
# State Wildlife Action Plan 2015 Update

San Francisco Bay Delta  
Salt Marsh Habitat

Timothy S. Dodson, Environmental Scientist  
November 2013

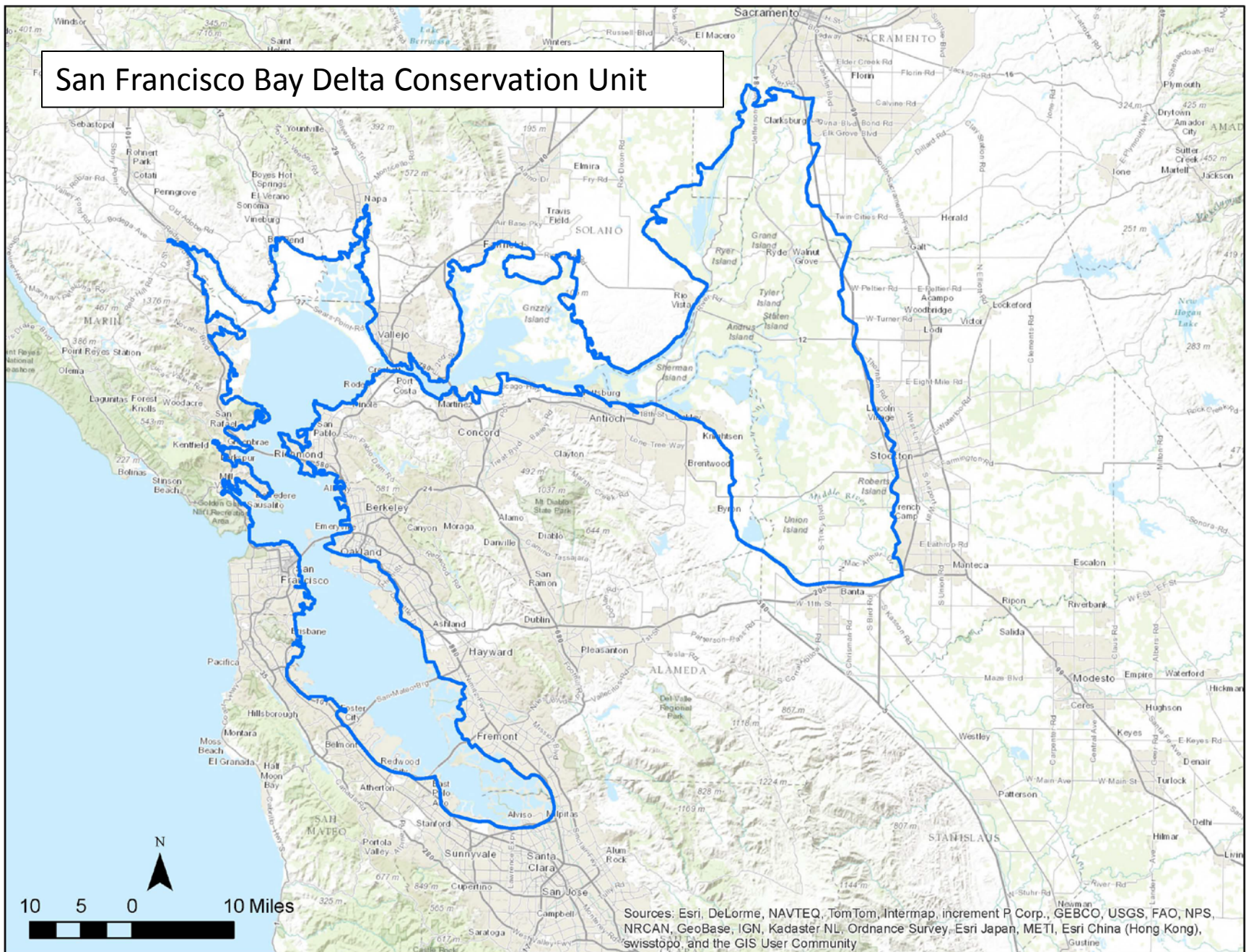
# San Francisco Bay Delta

- **Study boundary, based on primary tidal influence and applied a 1-meter sea level rise buffer.**
- **Low Lying Areas**





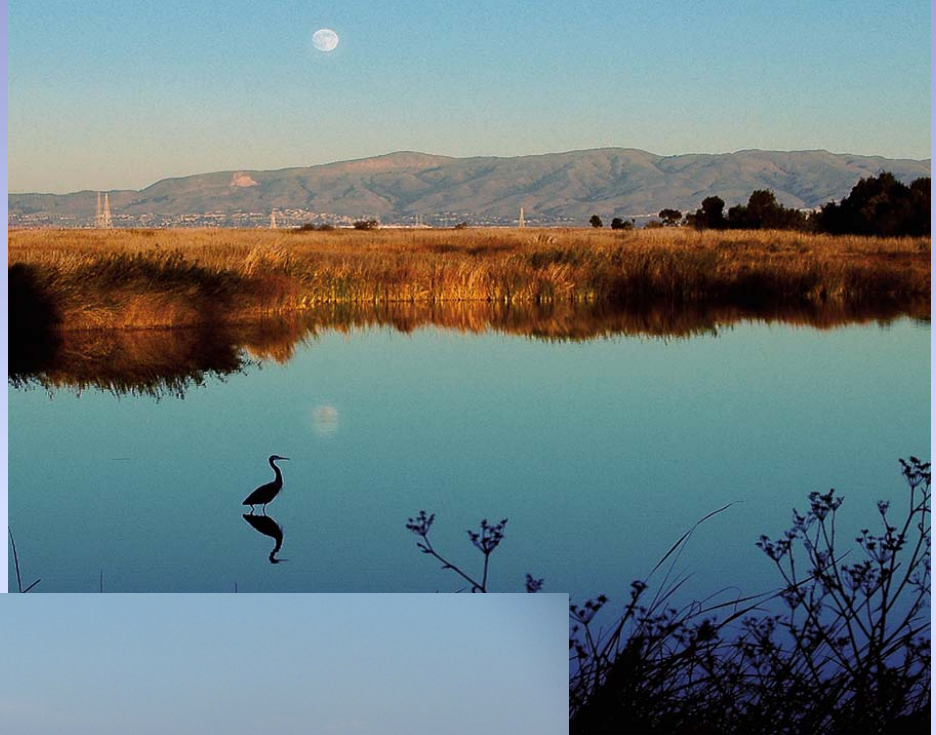
# San Francisco Bay Delta Conservation Unit





# San Francisco Bay Delta

- **Aquatic Habitats**
  - Deep and Shallow Water
- **Marshes/Wetlands**
  - Salt and Fresh
- **Managed/Cultivated Land**
- **Upland/Transition**
- **Floodplain**



# San Francisco Bay Delta





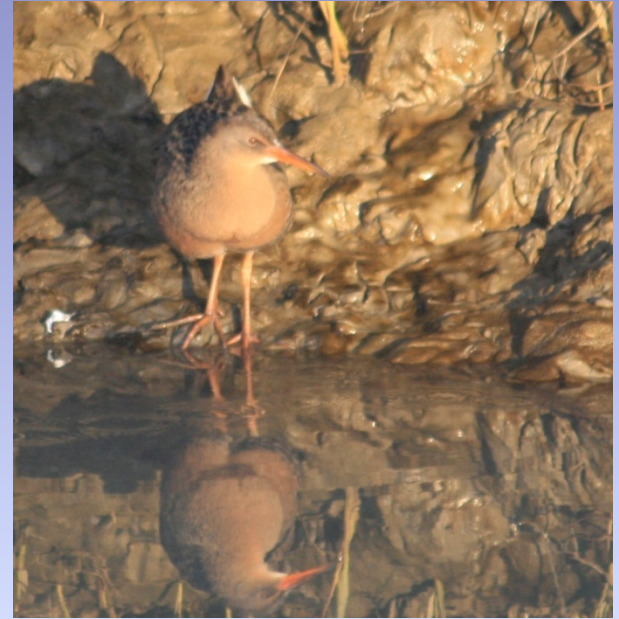
# Salt Marsh

- Located on the fringes of the San Francisco Bay Delta
- Provides Habitat
- Ecological Functions
- Other high priority habitats:
  - Fresh Water Marshes
  - Wetlands
  - Aquatic Habitats
  - Riparian



# Species of Concern

- **California Clapper Rail**
- **California Black Rail**
- **Salt Marsh Harvest Mouse**





# California Black Rail





# Salt Marsh Harvest Mouse



# California Clapper Rail



Photo: Robert Floerke





# Species of Concern (cont.)

- **Sacramento Splittail**
- **Tidewater Goby**
- **Tule Perch**
- **Suisun Shrew**
- **Suisun Song Sparrow**
- **Tricolored Blackbird**
- **Tule-greater White-fronted Goose**
- **Western Snowy Plover**
- **White-tailed Kite**
- **Yellow-headed Blackbird**



# Environmental and Human Caused Stresses

- Invasive Species
- Pollution
- Climate Change
- Landscape Modification
- Water Regime Changes





# Strategies

- **Education and Outreach**
- **Partner for Joint Advocacy**
- **Research and Data Management**
- **Protect and Restore Land**
- **Advocate for Laws and Policies**
- **Control Invasive Species**
- **Integrated Resource Management**
- **Economic Incentives**



# Strategies

- **Education and Outreach**
- **Protect and Restore Land**
- **Control Invasive Species**





# Results

- **Actions**
  - Planning
  - On the ground
- **Habitat improvements we all benefit from**





Photo: Tom Grey