



**State of California**  
**Department of Fish and Wildlife**

## **M e m o r a n d u m**

Date: March 20, 2014

To: Kevin Thomas  
Senior Environmental Scientist Supervisor  
Department of Fish and Wildlife

From: Ben Ewing  
District Fisheries Biologist  
Alpine, Amador, Calaveras, and Lake Counties  
Ca. Fish and Wildlife

Cc: Fish Files

Re: Clear Lake hitch fish rescue from Adobe Creek to Kelsey Creek

On March 18 and 19, 2014, California Department of Fish and Wildlife (Department) personnel, along with volunteers from the local tribes, conducted a fish rescue on Adobe Creek (Lake County). The purpose of the rescue was to capture and relocate Clear Lake hitch (*Lavinia exilicauda chi*) (CLH) that were stranded in isolated pools in Adobe Creek. Currently, CLH is a candidate to be listed as a threatened or endangered species under the California Endangered Species Act (CESA).

On March 12, 2014, there was adequate flow in Adobe Creek in which the Department was collecting CLH using a hoop net trap (Figure 1). In less than a week, the Department received a call from tribal members in Lake County indicating that the water in Adobe Creek had receded quickly and was down to a few pools where CLH were stranded and could not make it upstream or downstream back to the lake (Figure 2).



Figure 1. Adobe Creek at Soda Bay Road Crossing (3/12/14).



Figure 2. Adobe Creek approximately 100 yards upstream of the Soda Bay Road Crossing (3/18/2014).

On March 18 and 19, the Department collected 197 CLH from two pools in Adobe Creek, one above and one below the Soda Bay Road crossing (Figure 3). Each CLH was measured, and/or implanted with a Passive Integrated Transponder (PIT) tag, or given a single hole punch at the top of their caudal fin for identification. All of the CLH collected were released in Kelsey Creek just upstream of the Soda Bay Road crossing (Figure 4). There were two CLH that were recorded dead prior to transfer and no initial mortalities of any released CLH.

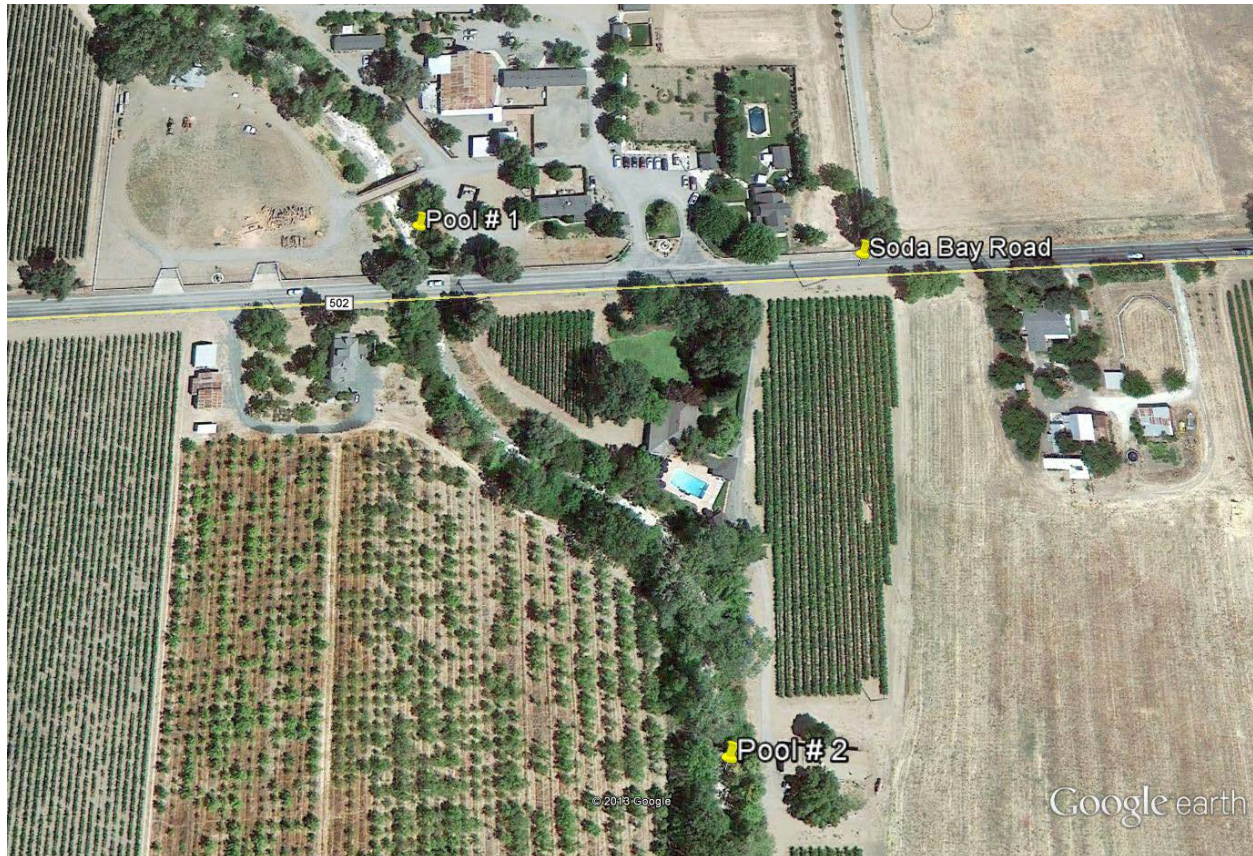


Figure 3. Adobe Creek hitch rescue locations in relation to Soda Bay Road.

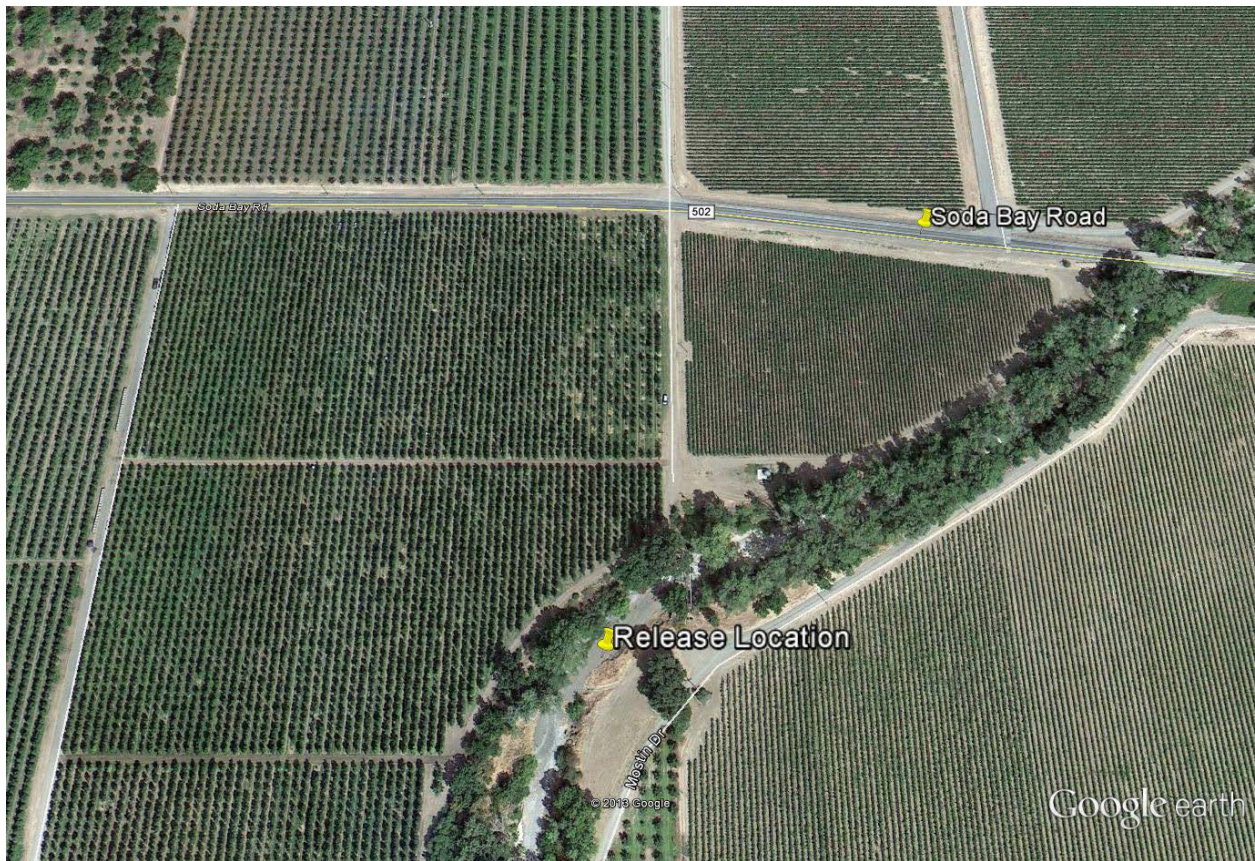


Figure 4. Kelsey Creek release location in relation to Soda Bay Road.

In addition to CLH, a small number of Sacramento suckers (*Catostomus occidentalis*) were collected from Adobe Creek and released into Kelsey Creek. With the very dry conditions that currently exist in Lake County, the Department will likely be conducting additional fish rescues this spring.