

Golden Eagle Research and Monitoring Online Coordination Tool

CA/NV Golden Eagle Working Group

January 27, 2014



**California and Nevada Eagle
Coordination Database**

User Data Entry

Information

Request Access





**California and Nevada Eagle
Coordination Database**

User Data Entry

Information

Request Access





This site was created at the request from California Department of Fish and Wildlife, Nevada Department of Wildlife, Bureau of Land Management, and the United States Fish and Wildlife Service in attempt to help monitor and coordinate eagle monitoring/research efforts on government lands in California and Nevada. The web application was developed with ArcGIS Viewer for Flex as well as HTML5 in order to aide in the collection of spatial data with an easy to use interface and also without requiring users to have access to GIS software.

For more information please email info@mojavedata.gov



Home



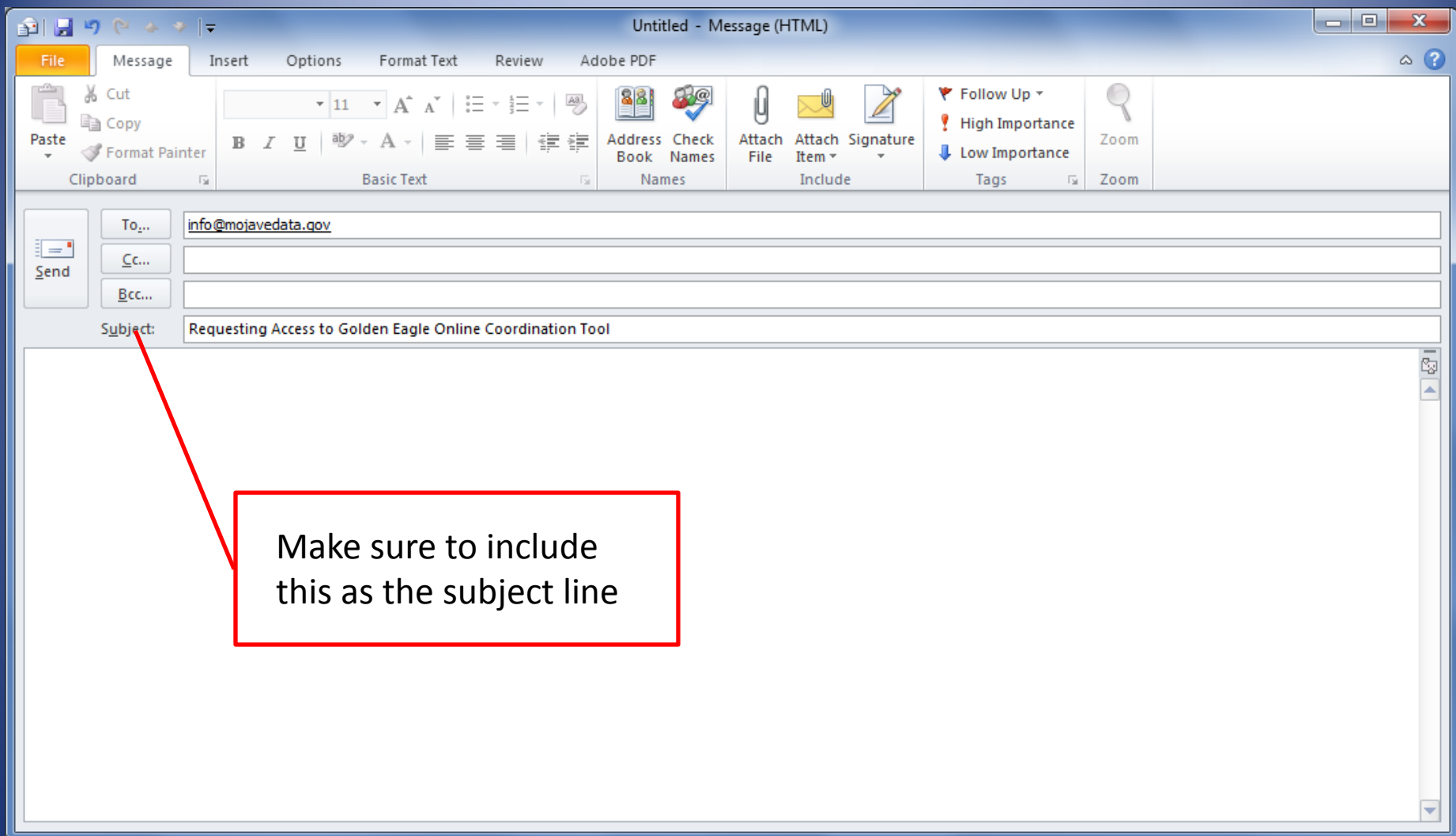
**California and Nevada Eagle
Coordination Database**

User Data Entry

Information

Request Access





- Once your email is sent USFWS and CDWF will make determination regarding your request
- If request granted you will be sent a userID and password



**California and Nevada Eagle
Coordination Database**

User Data Entry

Information

Request Access





[Submit Survey Location](#)

[View Survey Locations](#)

[View Survey Locations \(Secure\)](#)

*Please be patient for the map to load



MOJAVE DESERT ECOSYSTEM PROGRAM

CANV Eagle Coordination Database

Please zoom in when adding your data to ensure accuracy

Enter address

More... Basemap

Add Data

Select template to create feature

- Survey Point
 - Survey Point
- Survey Line
 - Survey Line
- Survey Area
 - Survey Area

400 km
200 mi

Latitude: 41.034145 Longitude: -133.995609

A satellite-style map showing the Mojave Desert region, including the Colorado Plateau and the Great Basin. The map is zoomed in to show topographic details. A scale bar at the bottom left indicates 400 km and 200 miles. The current coordinates are Latitude: 41.034145 and Longitude: -133.995609. The map interface includes navigation controls on the left and a 'Basemap' button in the top right.

How To Use The Map

Done

*Please be patient for the map to load

CA/NV Eagle Coordination Database

Please zoom in when adding your data to ensure accuracy

Add Data

Select template to create feature

- Survey Point
 - Survey Point
- Survey Line
 - Survey Line
- Survey Area
 - Survey Area

10 km
5 mi
Latitude: 36.924491 Longitude: -119.974701



CA/NV Eagle Coordination Database

Please zoom in when adding your data to ensure accuracy



Enter address

More... Basemap

Add Data

Select template to create feature

- Survey Point
 - Survey Point
- Survey Line
 - Survey Line
- Survey Area
 - Survey Area

Attributes

Name

Email

Phone Number

Description of Area

Research/Monitoring

[Delete](#)



5 km
4 mi
Latitude: 36.988976 Longitude: -119.834643

*Please be patient for the map to load



CA/NV Eagle Coordination Database
Please zoom in when adding your data to ensure accuracy

MOJAVE DESERT ECOSYSTEM PROGRAM

Enter address

More... Basemap

Add Data

Select template to create feature

- Survey Point
 - Survey Point
- Survey Line
 - Survey Line
- Survey Area
 - Survey Area

400 km
200 mi
Latitude: 41.044145 Longitude: -108.995609

A satellite map showing the Mojave Desert region, with a dark overlay indicating the current map view. The map includes a scale bar and coordinate information.

How To Use The Map

Done

http://mdepprojects.org/pdfs/How_To_Add_Data.pdf - Windows Internet Explorer

http://mdepprojects.org/pdfs/How_To_Add_Data.pdf

How To Add A Survey Location to the CA/NV Eagle Coordination Database

For more information please
email: info@mojavedata.gov



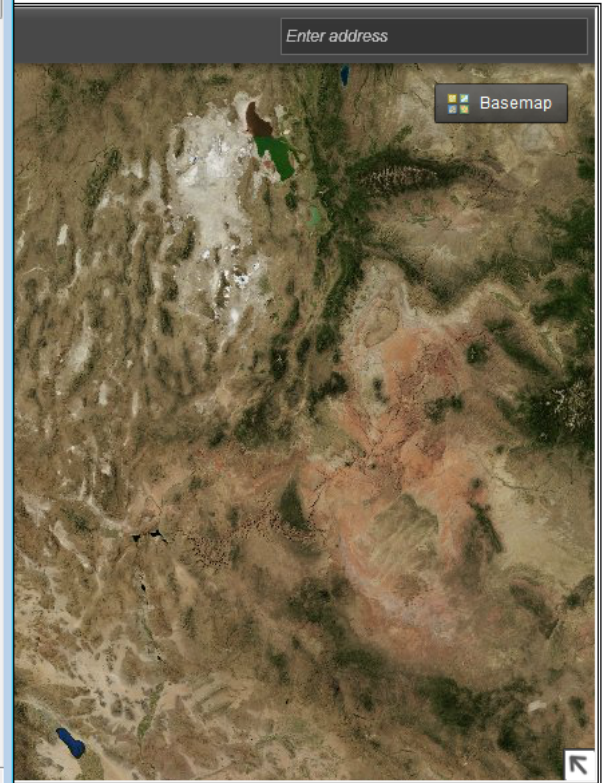
Done

Unknown Zone | Protected Mode: On

Home RSS Print Page Safety Tools

Enter address

Basemap



How To Use The Map

Done

*Please be patient for the map to load



CA/NV Eagle Coordination Database
Please zoom in when adding your data to ensure accuracy

Enter address

More... Basemap

Add Data

Select template to create feature

- Survey Point
 - Survey Point
- Survey Line
 - Survey Line
- Survey Area
 - Survey Area

400 km
200 mi
Latitude: 41.044145 Longitude: -123.995609

A satellite-style map showing the Mojave Desert region. The map is mostly brown and tan, with some green patches. The coastline is visible on the left side. A scale bar at the bottom left shows 400 km and 200 mi. The coordinates are Latitude: 41.044145 and Longitude: -123.995609. The map is framed by a dark border with navigation controls on the left and a search bar at the top right.

How To Use The Map

Done

Approval of Entries

- After entries have been made they have to be approved by CDFW (Carie Battistone) or USFWS (Heather Beeler).
- Approvers can mark an entry as either “sensitive” or “not sensitive”
 - “sensitive” = only viewable to party that entered the data and to the approvers
 - “not sensitive” = viewable to all users who have been granted access and have a password

[Admin Login](#)



**California and Nevada Eagle
Coordination Database**

User Data Entry

Information

Request Access





CA/NV Eagle Coordination Database

*Note: Only survey locations marked "Not Sensitive" will display on the general users' map

Enter address



More Basemap

Data Layers

Layer Visibility

- Survey Point
- Survey Line
- Survey Area
- CA BLM Verified Renewable Energy ROW
- Nevada BLM Authorized 2010 GeoParcels
- Developable Area Solar Energy Zone
- BLM Development Alternative
- BLM No Action
- Land Restriction Area National Monument

Edit Data

None of the layers have create capability

- Survey Point
 - Not Sensitive
 - Sensitive
 - Not Reviewed
- Survey Line
 - Not Sensitive





Submit Survey Location

View Survey Locations

View Survey Locations (Secure)



*Please be patient for the map to load
Click on features to view the associated data.

MOJAVE DESERT ECOSYSTEM PROGRAM **CA/NV Eagle Coordination Database**
View/Search Approved Survey Locations

Enter address

More Basemap

Data Layers

Layer Visibility

- Survey Point
- Survey Line
- Survey Area

Latitude: 33.696922 Longitude: -130.638427

400 km
200 mi

A topographic map of the western United States, including California, Nevada, Utah, and Arizona. The map shows major geographical features like the Great Basin, Mojave Desert, and San Joaquin Valley. Several survey locations are marked with blue squares and circles. Key cities like Sacramento, San Francisco, San Jose, Fresno, Las Vegas, and Salt Lake City are labeled. The map includes a scale bar (0 to 400 km and 0 to 200 mi) and coordinate information (Latitude: 33.696922, Longitude: -130.638427). A 'Data Layers' panel is overlaid on the left side, showing 'Layer Visibility' for 'Survey Point', 'Survey Line', and 'Survey Area', all of which are checked. The map also features a search bar at the top right with the text 'Enter address', a 'More' button, and a 'Basemap' button. The 'MOJAVE DESERT ECOSYSTEM PROGRAM' logo is in the top left corner, and the 'CA/NV Eagle Coordination Database' title is in the top center.



CA/NV Eagle Coordination Database

View/Search Approved Survey Locations



Enter address



More Basemap

Data Layers

Layer Visibility

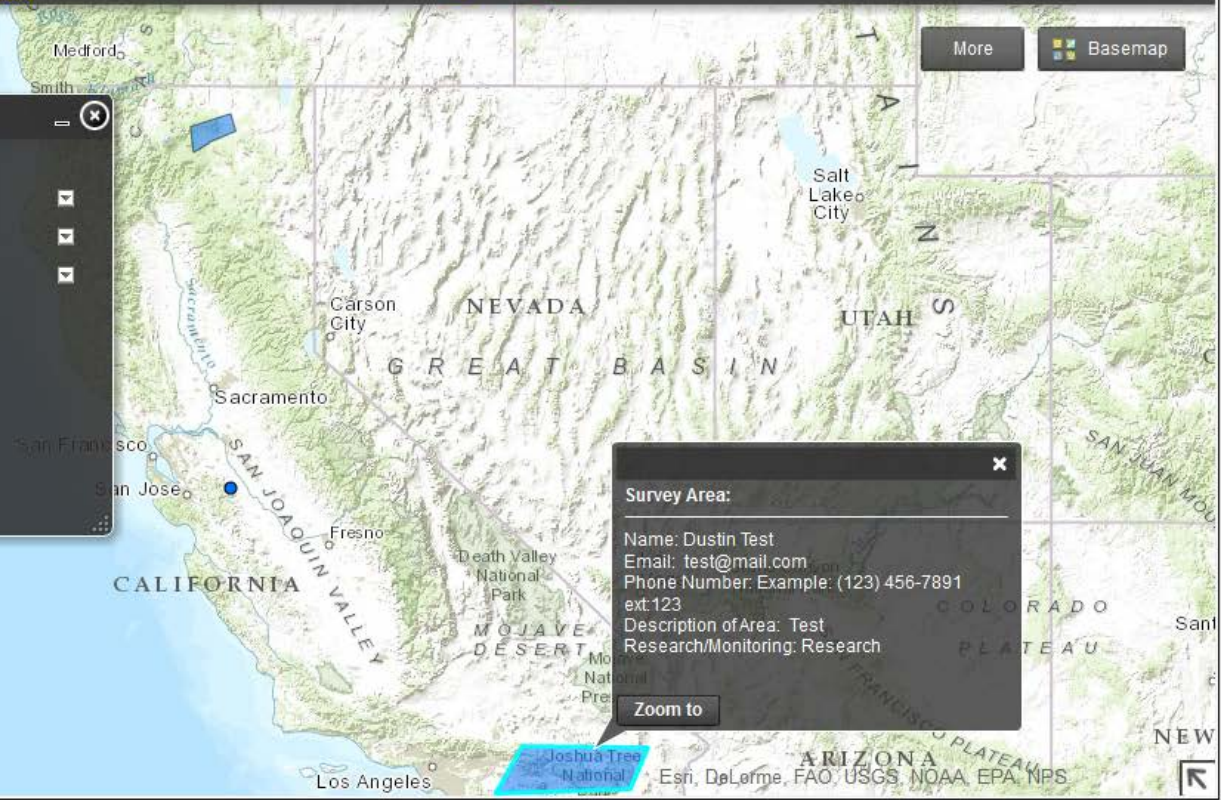
- Survey Point
- Survey Line
- Survey Area

Survey Area:

Name: Dustin Test
Email: test@mail.com
Phone Number: Example: (123) 456-7891 ext:123
Description of Area: Test
Research/Monitoring: Research

Zoom to

400 km
200 mi
Latitude: 39.850720 Longitude: -121.739501



Questions?

Contact Carie Battistone

Wildlife Branch

California Department of Fish and Wildlife

(916) 445-3615

Carie.Battistone@wildlife.ca.gov