

Nevada Statewide Golden Eagle Nest Site Survey Project



Great Basin Bird Observatory, Nevada Department of Wildlife, and
U.S. Bureau of Land Management Nevada State Office

Project Rationale and Goals

- Support BLM renewable energy management goals
- Representative baseline map of nest site distribution in focal areas
- Map survey coverage as well as nests



Aerial vs. Ground

- Aerial
 - NDOW priority areas
 - Difficult access

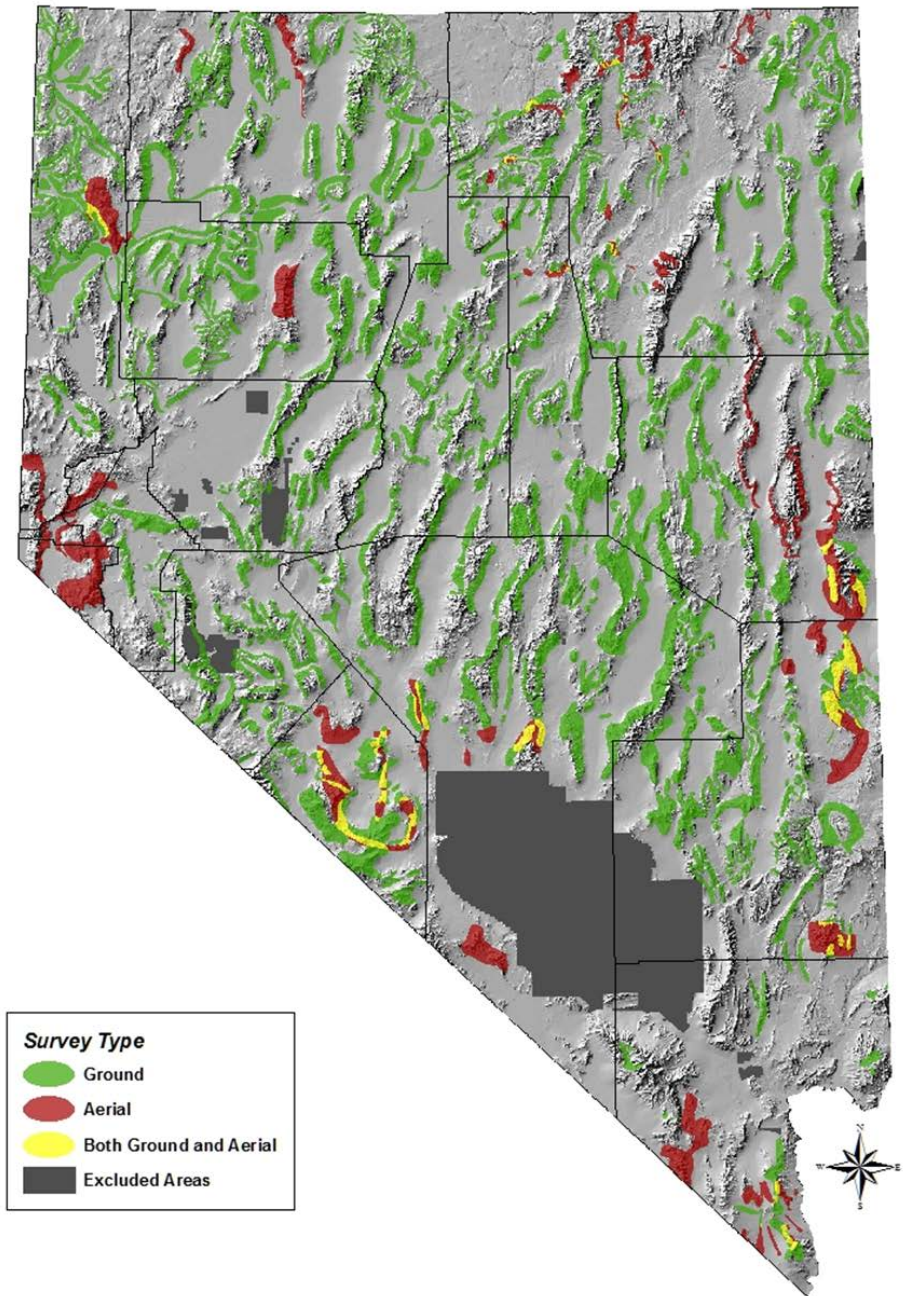


- Ground
 - All other focal areas

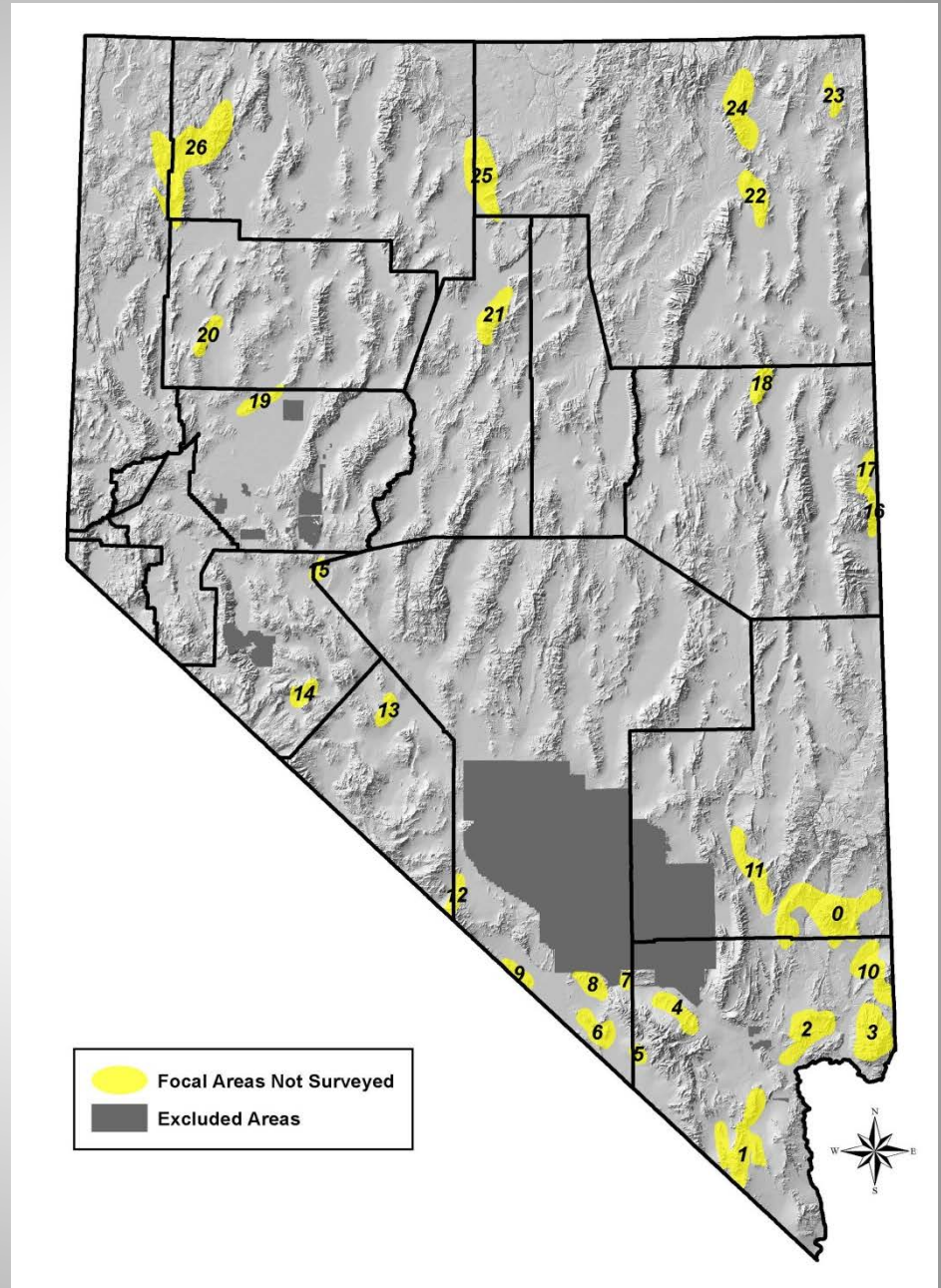


Surveyed Areas

- ▣ 11.9 million acres by ground, 2.2 million acres by air
- ▣ > 70% of higher priority land area and focal areas

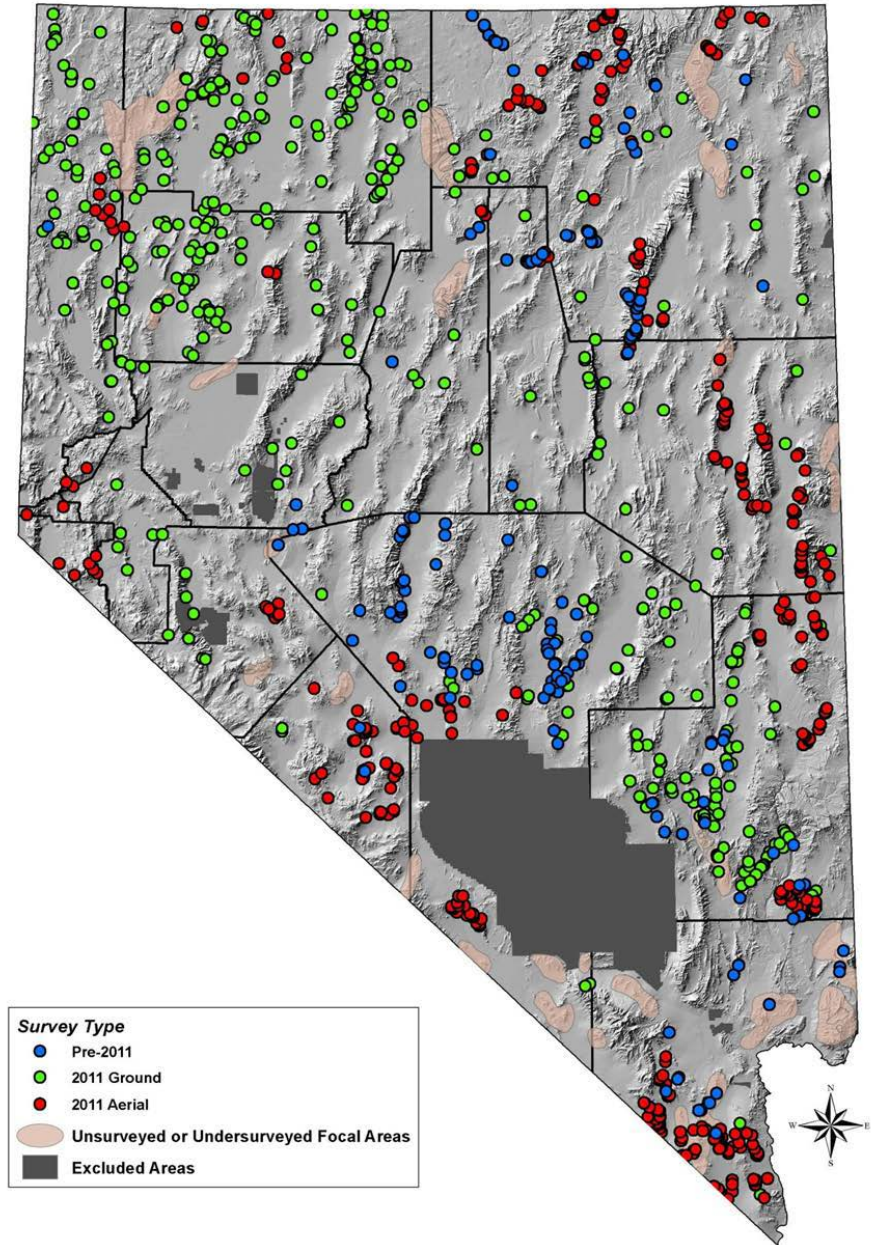


Remaining Focal Areas

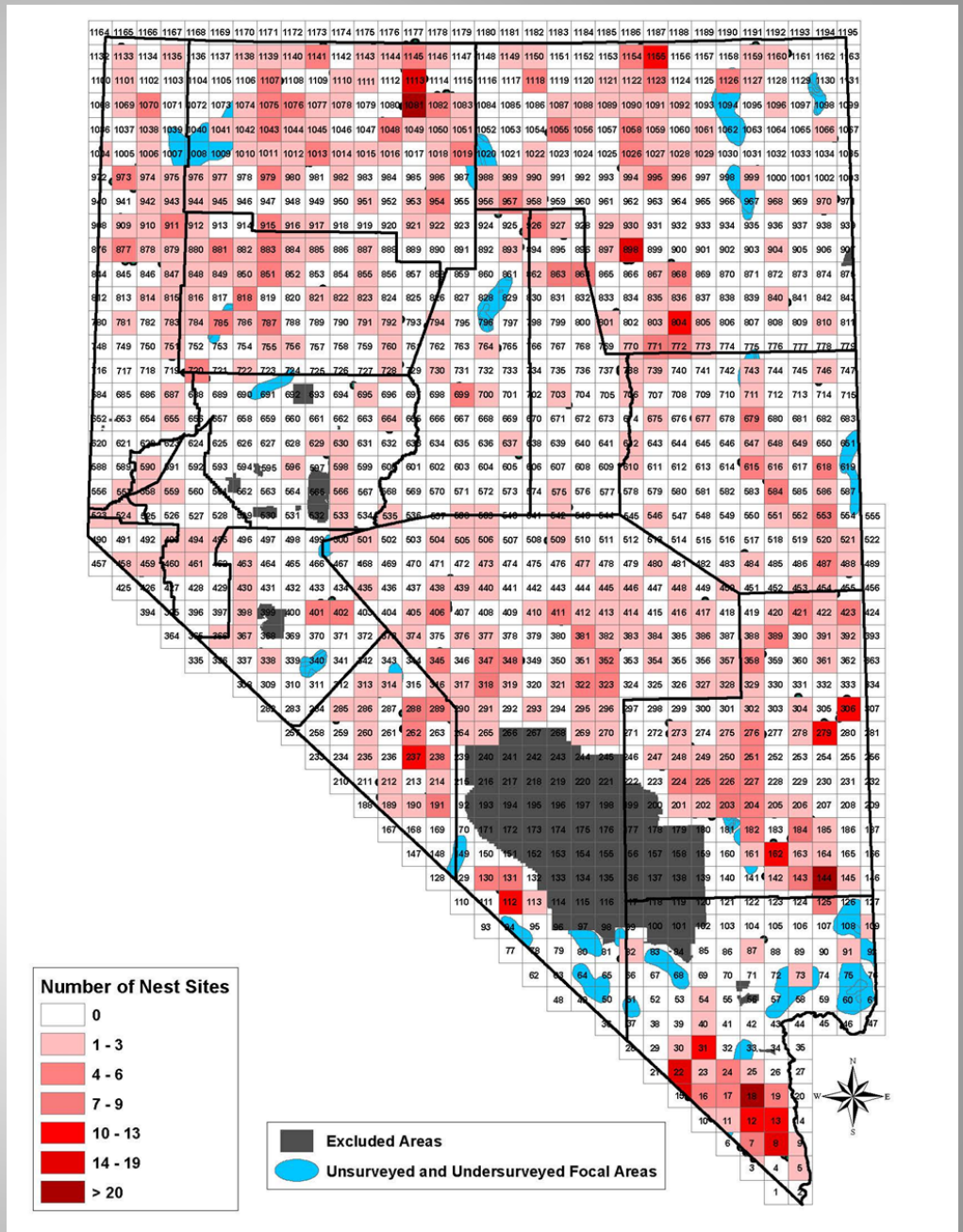


Nest site locations

- ▣ 1,175 “sites”,
2,673 structures
- ▣ > 80% from 2011 surveys



Management Presentation



2013 Field Season

(NDOW Mining Assessment Fee Program and State Wildlife Grant)

- Aerial surveys of additional NDOW priority areas
- Ground (or aerial) surveys of remaining focal areas
- “Calibration” studies:
 - 1) Ground Rapid vs. Ground Intensive Surveys (Blind)

Survey Protocols

- Ground Rapid:
 - Drivable roads
 - Incomplete but unknown detectability
- Ground Intensive
 - Search all possible suitable habitat by ground or foot
 - No time consideration

2013 Field Season

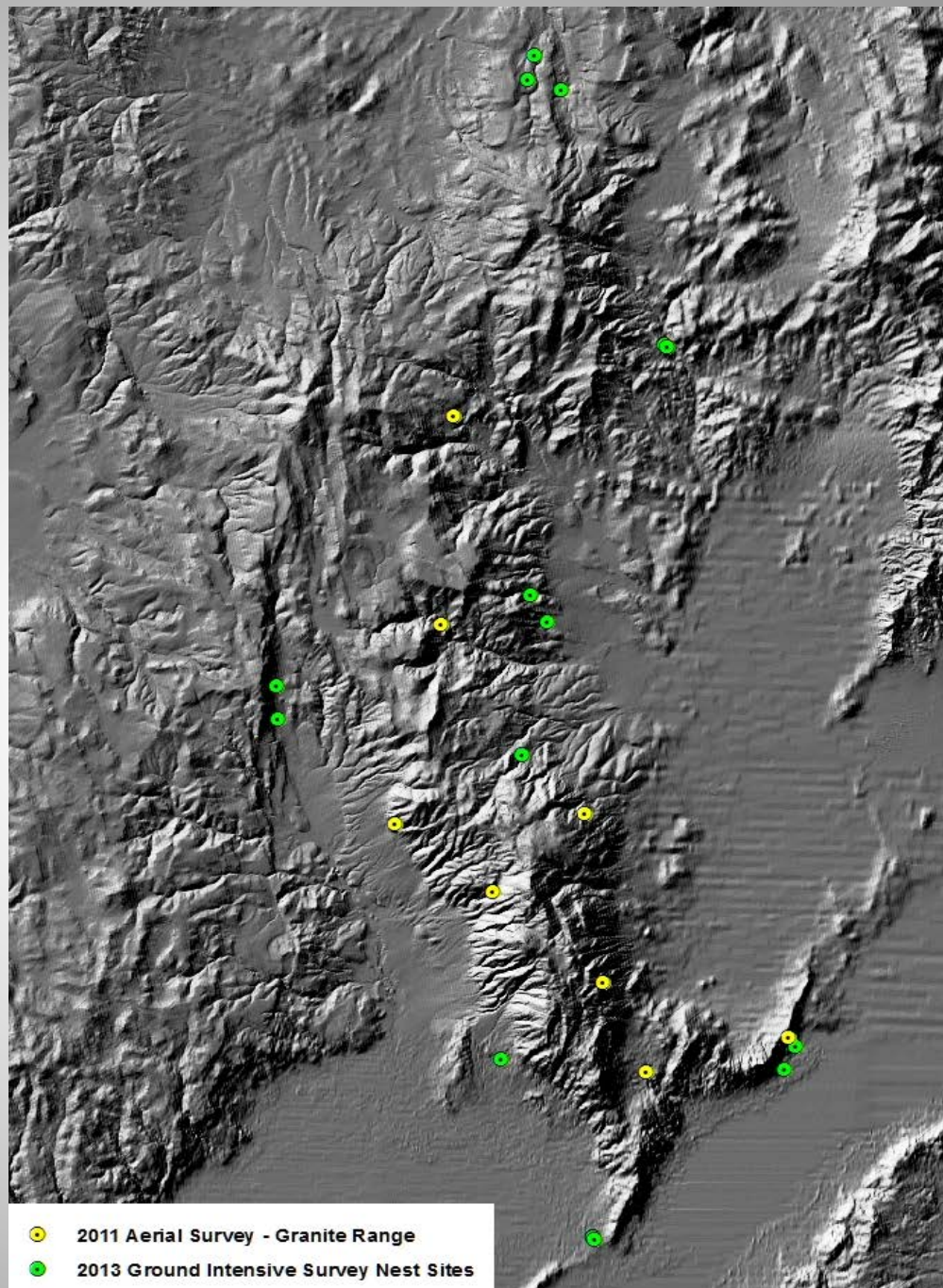
- Aerial surveys of additional NDOW priority areas
- Ground (or aerial) surveys of remaining focal areas
- “Calibration” studies for:
 - 1) Ground Rapid vs. Ground Intensive Surveys (Blind)
 - 2) Aerial vs. Ground Intensive (Blind)
 - 3) Aerial vs. Rapid Ground (Opportunistic)
 - 4) Nest Occupancy (intensive revisits)

Data Collected in 2013

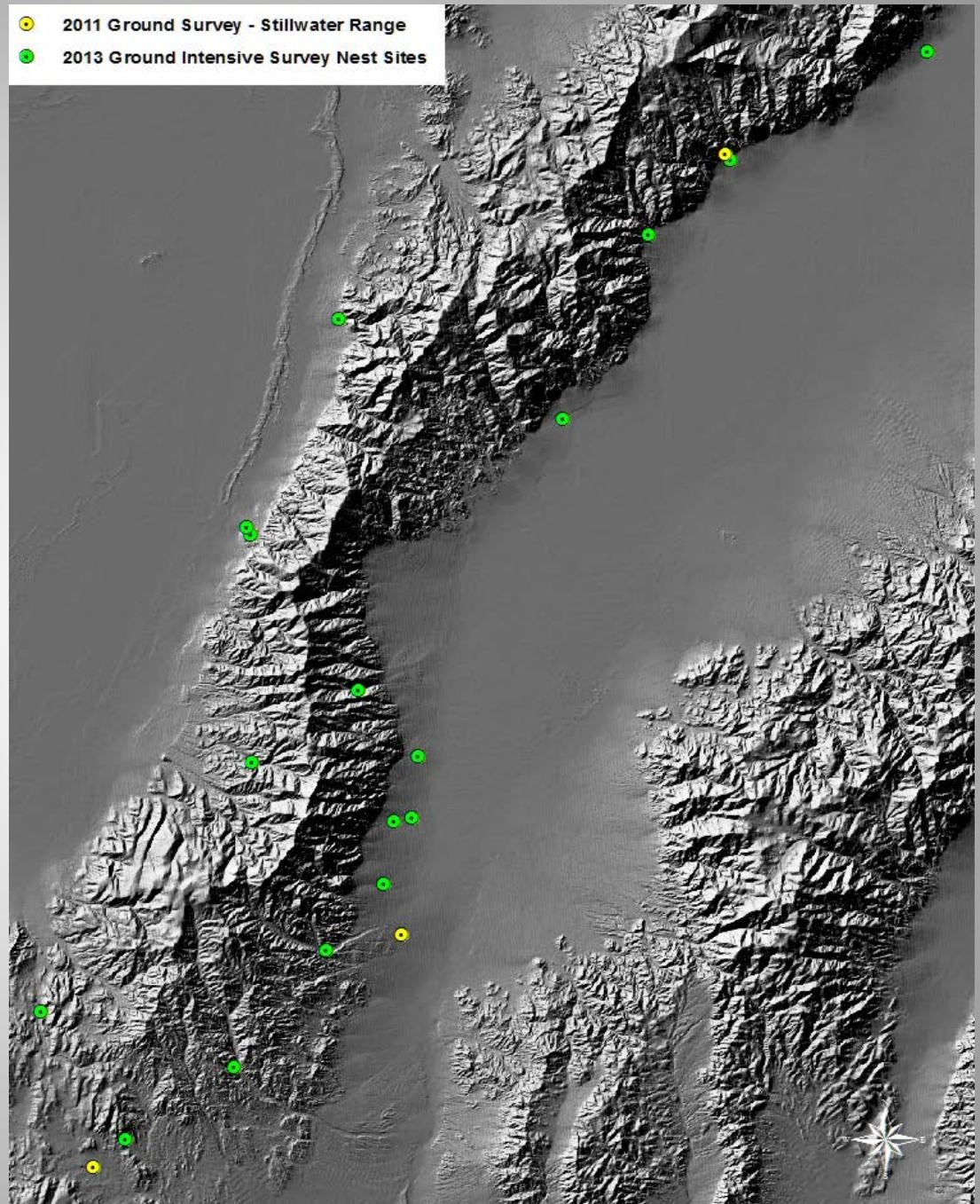
(Analysis IP)

- NDOW aerial surveys
- 18 of 26 remaining focal areas by ground, some additional by aerial
- Ground Intensives
 - Aerial comparison sites: Double H Mts., Montana Mts., Humboldt Mts., Granite Range, Egan Range
 - Ground rapid comparison sites: Stillwater Range, Osgood Mts., N. Esmeralda Hills (several sites)
- Areas with revisits: portions of Stillwater Range, Osgood Mts., N. Esmeralda Hills, Granite Range, Double H Mts., Montana Mts., and focal area 26

Aerial vs.
Ground
Intensive
Preliminary
Comparison:
Granite Range



Ground Rapid
vs. Ground
Intensive
Preliminary
Comparison:
Stillwater Range



Anticipated 2013 Data Analysis Completion: March 2014

Data Requests

- ▣ PLSS vs. UTM's
- ▣ Requests to:
 - Chet VanDellen, NDOW
 - cvandellen@ndow.org

 - Cris Tomlinson, NDOW
 - ctomlinson@ndow.org

Thanks to

- GBBO
 - Murrelet Halterman
 - Nick Roger
 - Katie Fellows
 - Bruce Casler
 - Ralph Phenix
- NDOW
 - Cris Tomlinson
 - Christy Klinger
 - Brad Bauman
 - Rory Lamp
 - Teri Slatauski
 - Pete Bradely
 - Dave Catalano
- BLM and FWS
 - Sandra Brewer
 - Steve Abele



FUNDING

- ▣ BLM Nevada State Office
- ▣ NDOW Mining Assessment Fee Program and State Wildlife Grants