

CALIFORNIA - NEVADA GOLDEN EAGLES

USDA Forest Service
January 2014 Update

Update from 2012 Meeting

- ▣ In California:
 - Golden Eagle was evaluated for Forest Service Sensitive Species
 - Not listed due to apparent abundance in northern California
 - Agree to reevaluate once data placed database
 - Anticipate re-evaluation in summer 2014

Species of Conservation Concern

- ▣ 2012 Planning Rule utilizes Species of Conservation Concern
- ▣ Determined at the Planning Unit (Forest) level
- ▣ Typically G1/2, T1/2, and S1/2 NatureServe Rankings are considered

Golden Eagle Status

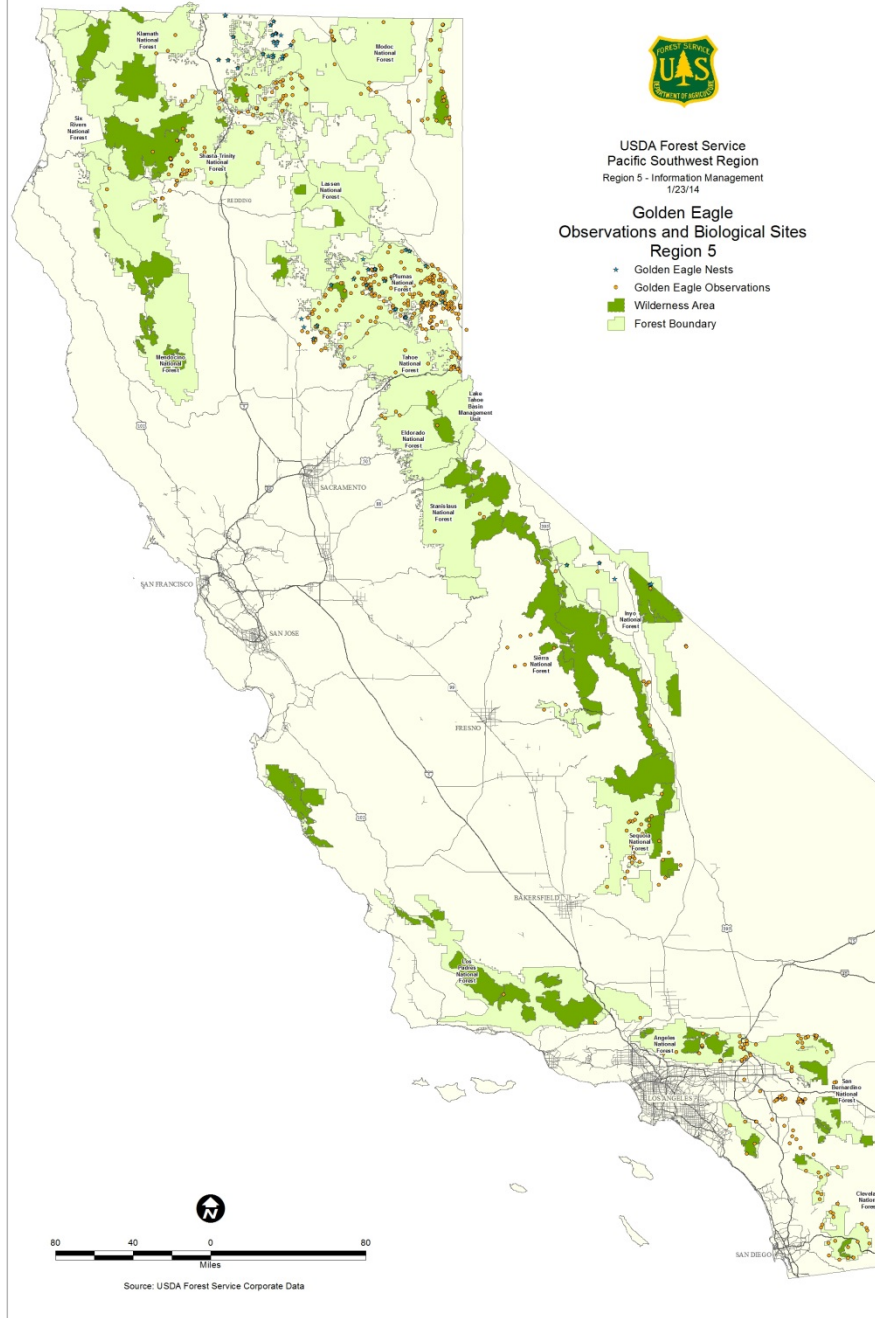
- ▣ Golden Eagle is listed
 - G5
 - California: S3
 - Nevada: S4
 - local threats/declines do not yet comprise a major conservation problem from a global perspective.
 - Last updated August 2011
- ▣ Individual Planning Units (Forests) could add if it is a rare occurrence on that Unit.



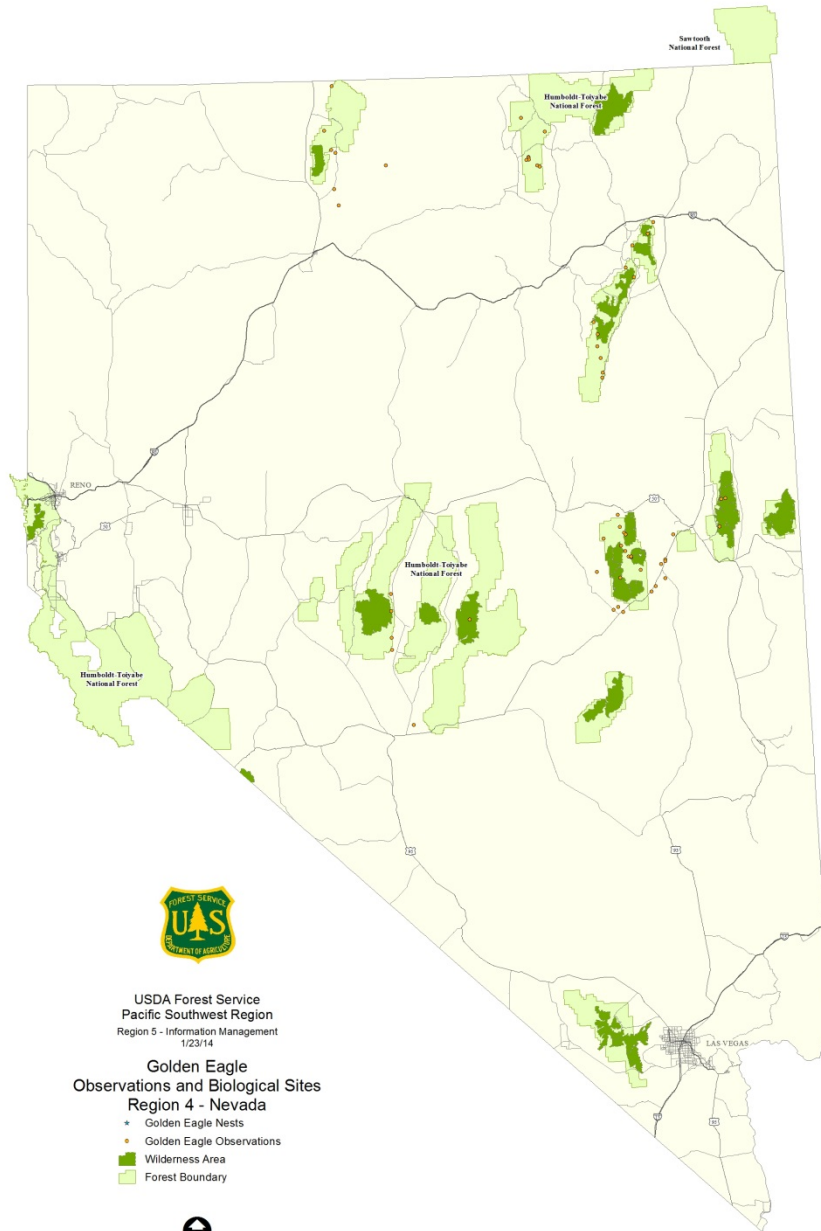
USDA Forest Service
Pacific Southwest Region
Region 5 - Information Management
1/23/14

Golden Eagle Observations and Biological Sites Region 5

- ★ Golden Eagle Nests
- Golden Eagle Observations
- Wilderness Area
- Forest Boundary



Source: USDA Forest Service Corporate Data



USDA Forest Service
 Pacific Southwest Region
 Region 5 - Information Management
 1/23/14

**Golden Eagle
 Observations and Biological Sites
 Region 4 - Nevada**

- + Golden Eagle Nests
- Golden Eagle Observations
- Wilderness Area
- Forest Boundary



Source: USDA Forest Service Corporate Data