

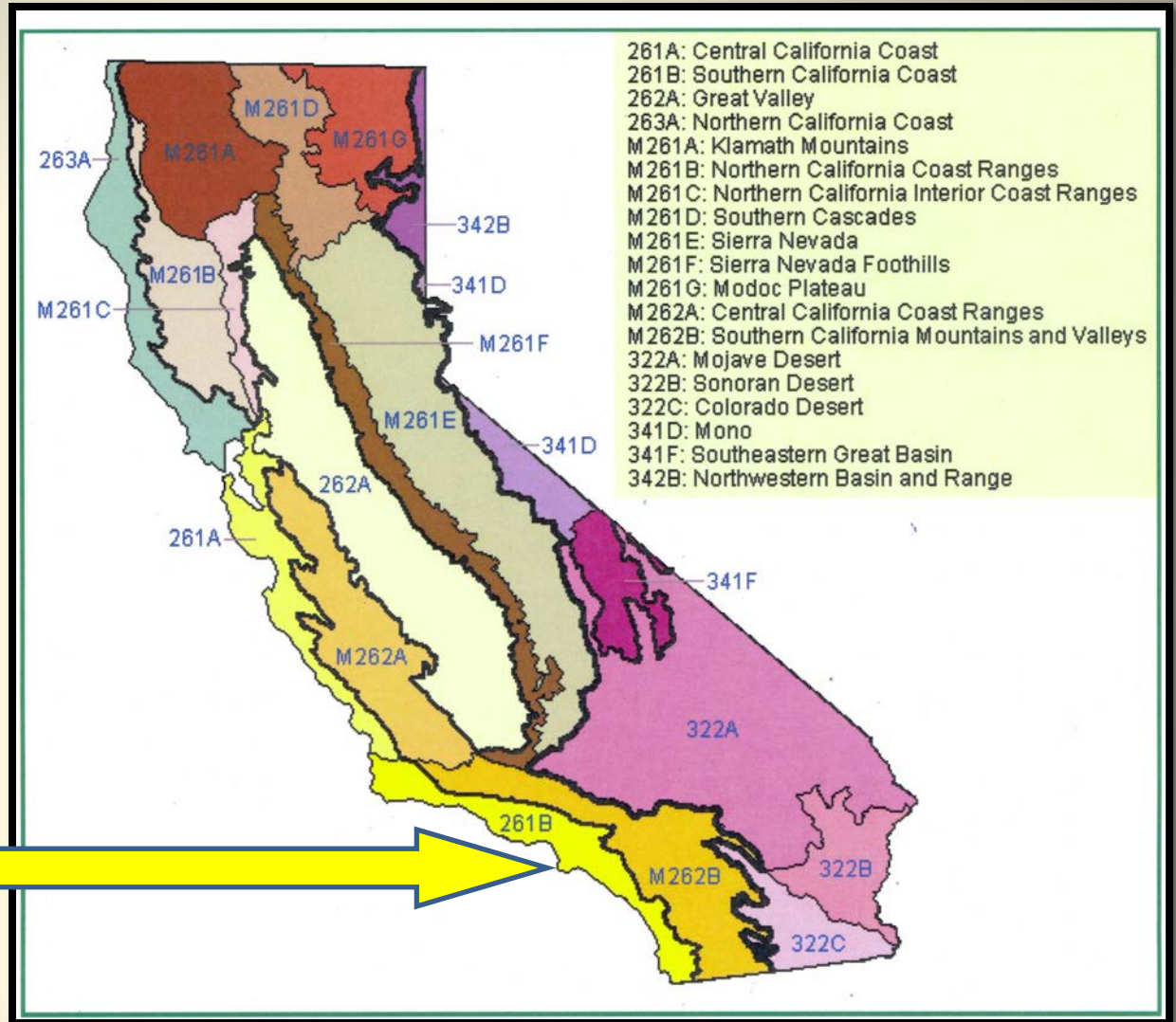


State Wildlife Action Plan 2015 Update

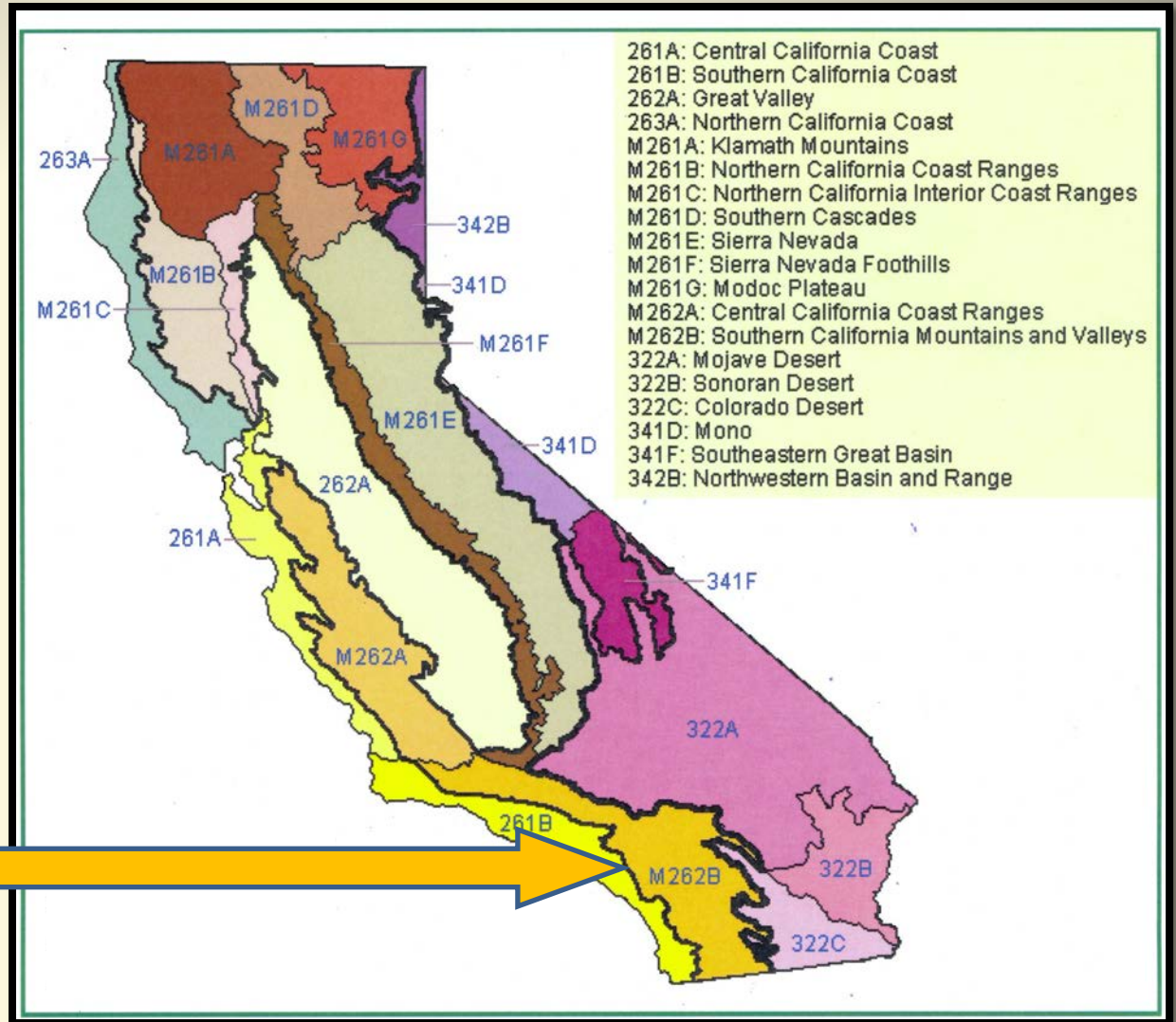
Southern California Mountain and Valleys & South Coast Ecoregions

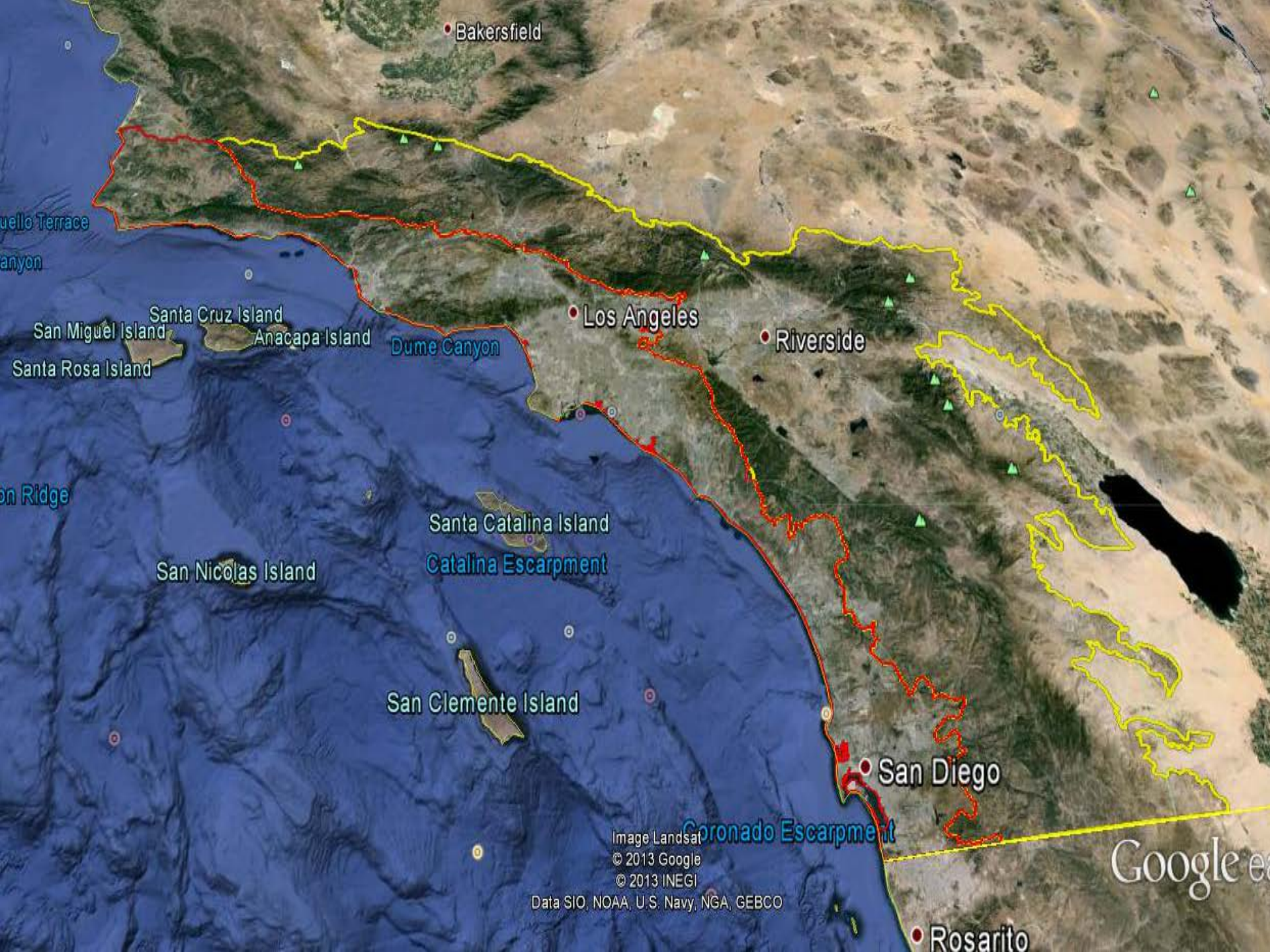
Karen Miner
October 15, 2013

South Coast Ecoregion Section



Southern California Mountains and Valleys Ecoregion Section





Bakersfield

uello Terrace
anyon

Santa Cruz Island

San Miguel Island

Anacapa Island

Santa Rosa Island

Dume Canyon

Los Angeles

Riverside

on Ridge

Santa Catalina Island

Catalina Escarpment

San Nicolas Island

San Clemente Island

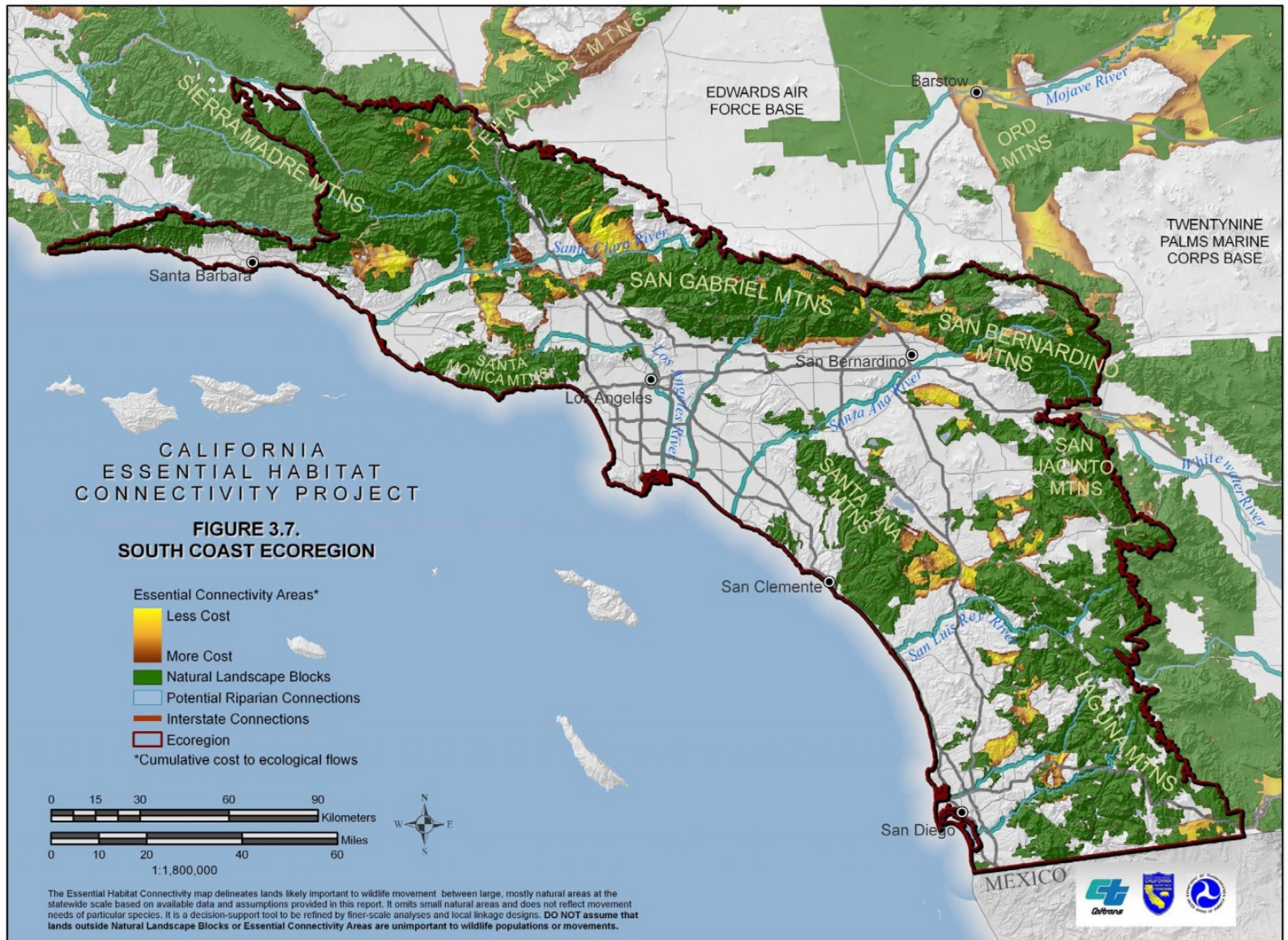
San Diego

Coronado Escarpment

Image Landsat
© 2013 Google
© 2013 INEGI
Data SIO, NOAA, U.S. Navy, NGA, GEBCO

Rosarito

Google e



The Essential Habitat Connectivity map delineates lands likely important to wildlife movement between large, mostly natural areas at the statewide scale based on available data and assumptions provided in this report. It omits small natural areas and does not reflect movement needs of particular species. It is a decision-support tool to be refined by finer-scale analyses and local linkage designs. **DO NOT** assume that lands outside Natural Landscape Blocks or Essential Connectivity Areas are unimportant to wildlife populations or movements.

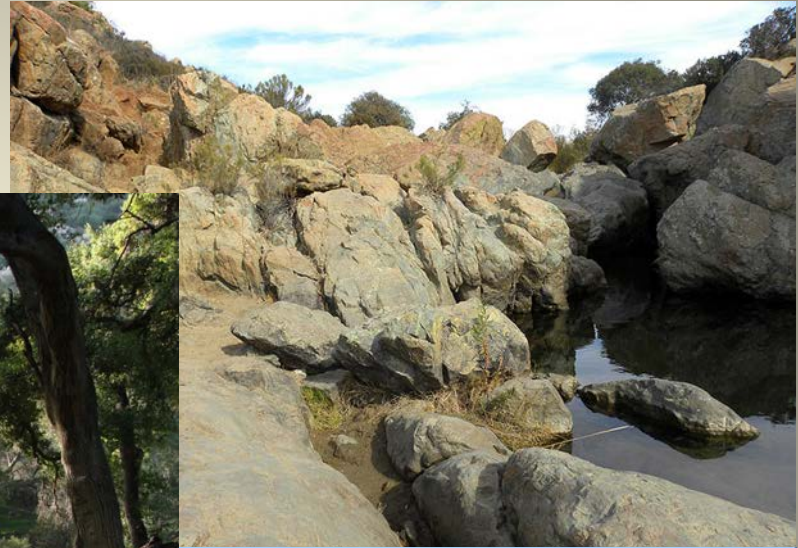
Coastal Habitats



Lowland and Valley Habitats



Foothill Habitats



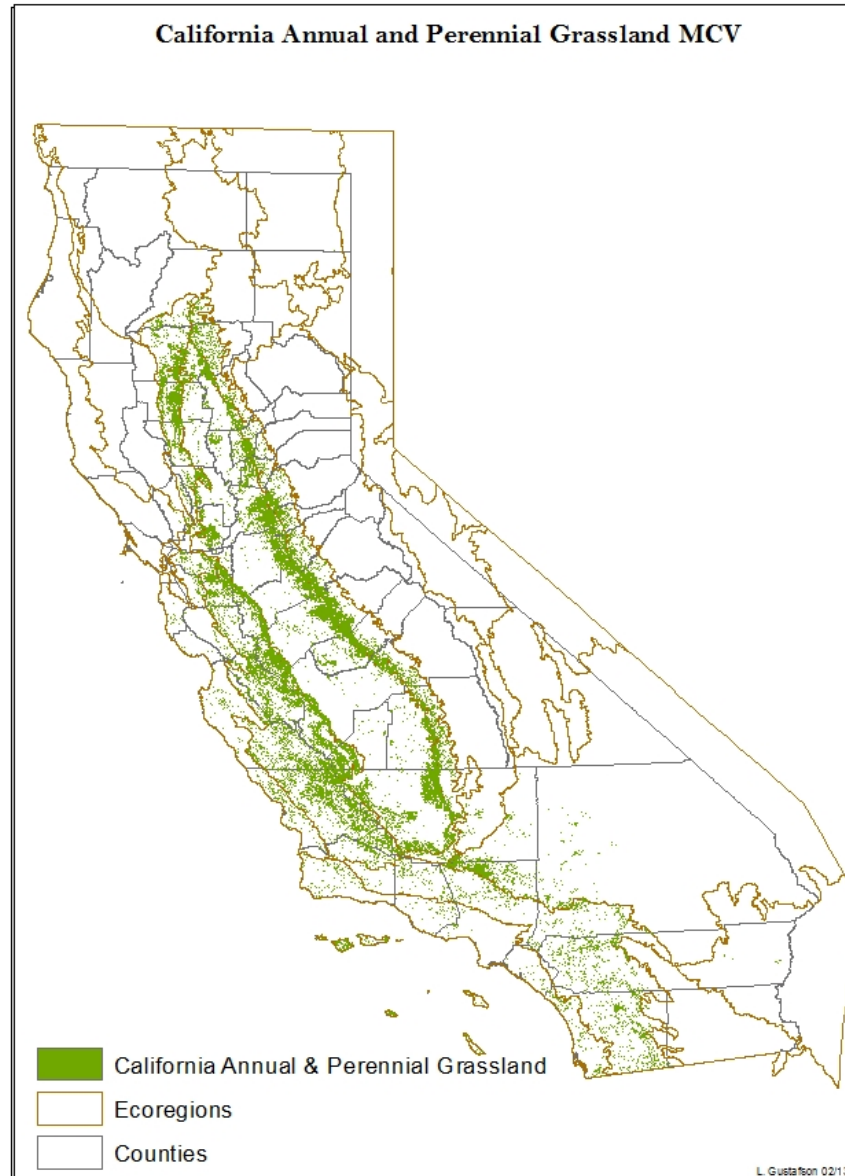
Mountain Habitats



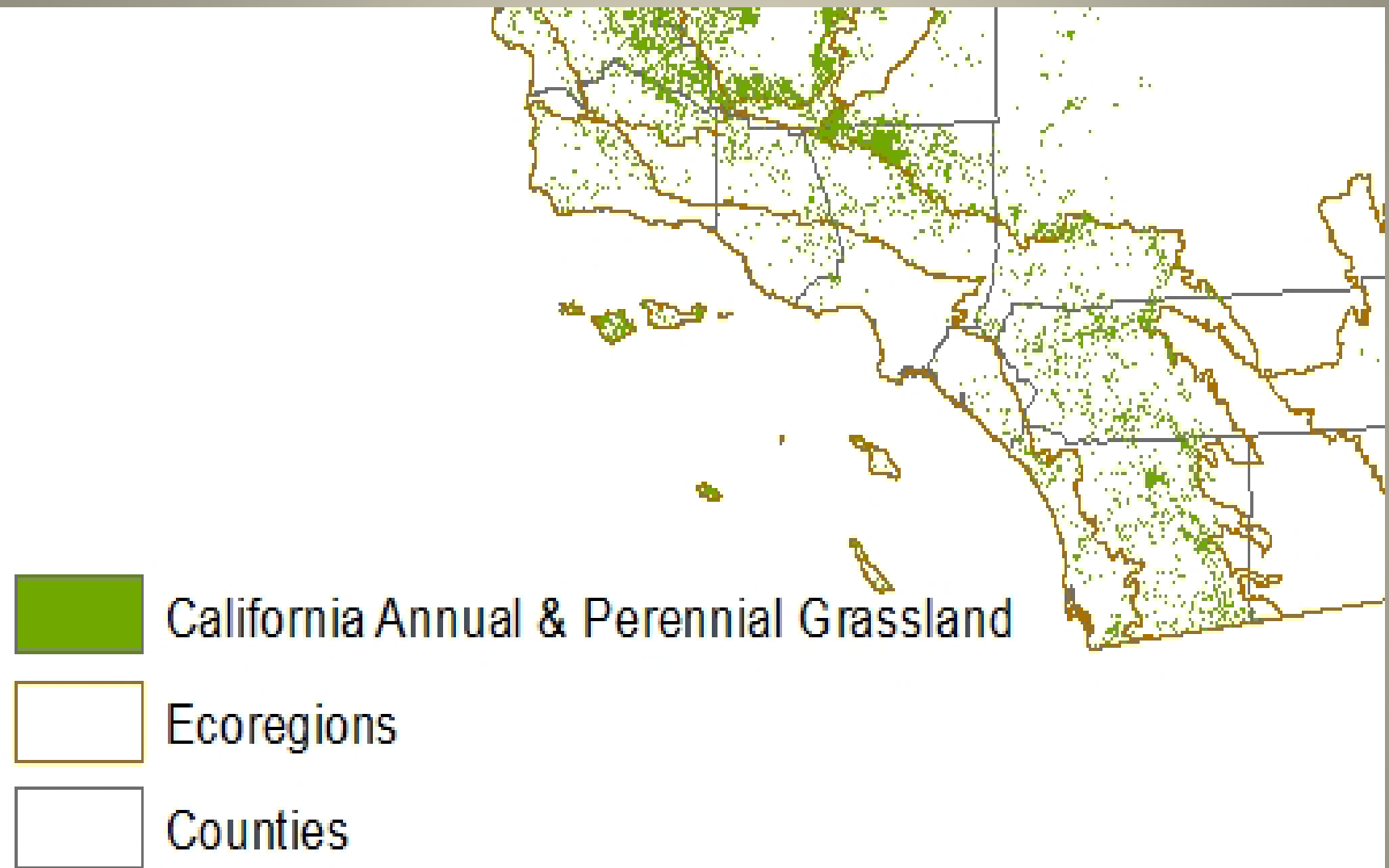
About the Targets

- South Coast Ecoregion
 - Beach dune, saltmarsh, sage scrub, grasslands, vernal pools, oak woodlands, riparian, freshwater marsh
- Southern Cal Mtns & Valleys Ecoregion
 - Sage scrub, grasslands, riparian, forest/woodlands

National Vegetation Standard Macrogroup



Source: US Geological Survey, Gap Analysis Program (GAP). August 2011.
National Land Cover, v2



Source: US Geological Survey, Gap Analysis Program (GAP). August 2011.
National Land Cover, v2

California Annual and Perennial Grasslands



Native Forbs



25 SGCNs Associated with Grasslands



More Grassland species



Threats to Grasslands



Strategies for Grassland

- ❖ **Acquisition / Conservation Easements** – with eye towards management needs.
- ❖ **Provide Input on Local Planning** – future NCCPs, zoning for development and crop establishment (particularly vineyards).
- ❖ **Invasives Management** – a strategic plan to effectively control invasive plants where do most good for SGCN and ecosystem function.
- ❖ **Partner for Joint Advocacy** - monetary incentives for conservation on working lands and control of rodenticide use
- ❖ **Data Gathering and Analysis** – distribution of SGCNs relative to threats and habitat needs to inform the other strategies.

Southwestern North American Riparian Forest



38 SGCNs Associated with Riparian



Land and Water



Threats to Riparian



Threats to Riparian

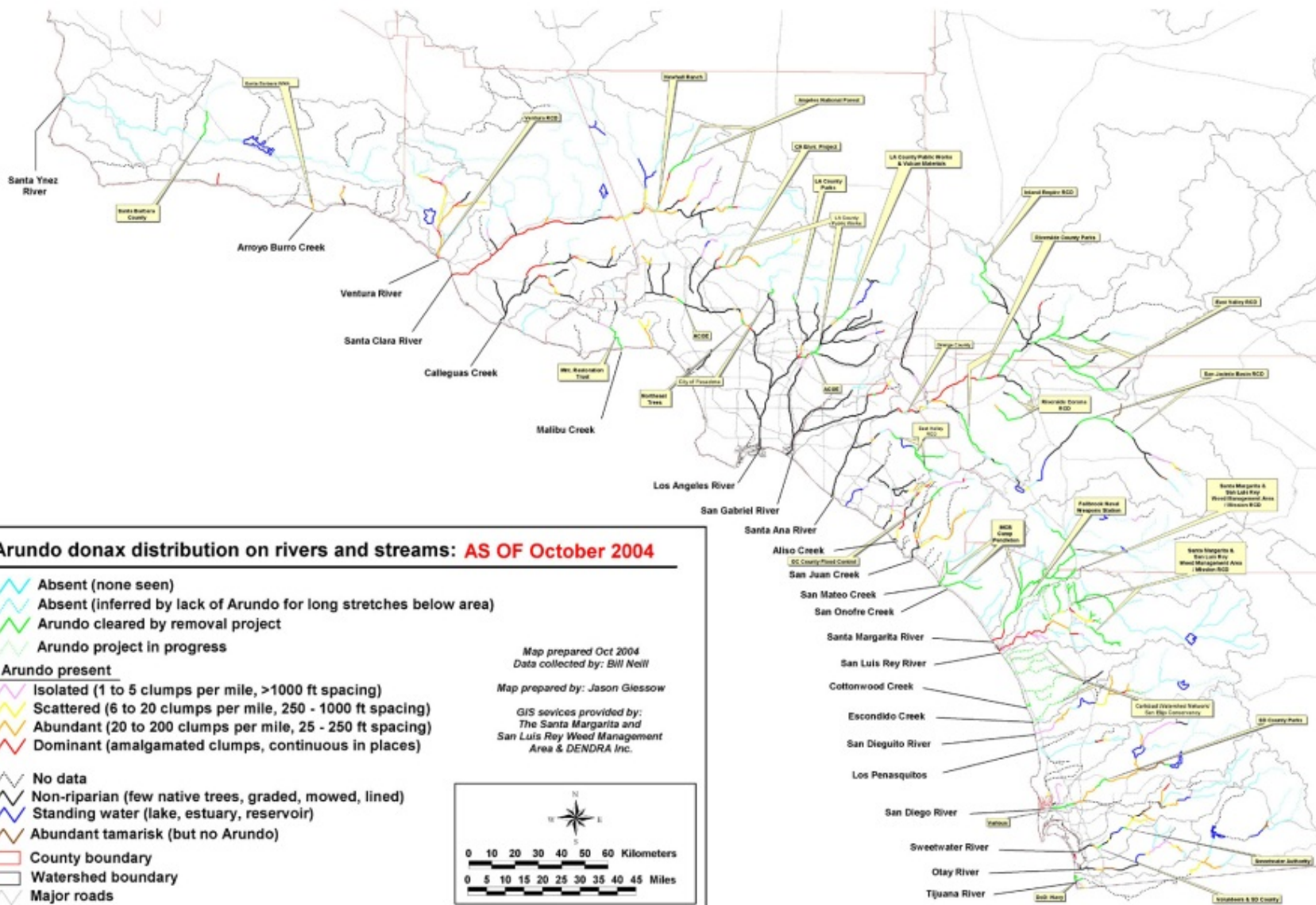


DISTRIBUTION OF ARUNDO DONAX IN COASTAL WATERSHEDS OF SOUTHERN CALIFORNIA: **AS OF October 2004**





This map and accompanying text descriptions of distribution data are available at: <http://smslrwma.org>

Bill Neill
Riparian Repairs
4900 Glenview Ave., Anaheim CA 92807
phone: 714-779-2369
email: bgnell@earthlink.net





Jason Glassow
Santa Margarita and San Luis Rey Weed Management Area & DENDRA Inc.
phone: 760-943-6924
email: wma@smslrwma.org or glassow@cox.net






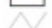



Arundo donax distribution on rivers and streams: **AS OF October 2004**

-  Absent (none seen)
-  Absent (inferred by lack of Arundo for long stretches below area)
-  Arundo cleared by removal project
-  Arundo project in progress

Arundo present

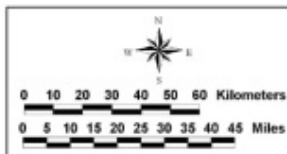
-  Isolated (1 to 5 clumps per mile, >1000 ft spacing)
-  Scattered (6 to 20 clumps per mile, 250 - 1000 ft spacing)
-  Abundant (20 to 200 clumps per mile, 25 - 250 ft spacing)
-  Dominant (amalgamated clumps, continuous in places)

-  No data
-  Non-riparian (few native trees, graded, mowed, lined)
-  Standing water (lake, estuary, reservoir)
-  Abundant tamarisk (but no Arundo)
-  County boundary
-  Watershed boundary
-  Major roads

Map prepared Oct 2004
Data collected by: Bill Neill

Map prepared by: Jason Glassow

GIS services provided by:
The Santa Margarita and
San Luis Rey Weed Management
Area & DENDRA Inc.



Strategies for Riparian

- ❖ **Acquisition / Conservation Easements** - areas that can support riparian habitat
- ❖ **Provide Input on Local Planning** - engage in local planning to encourage the use of bio(soft) engineering for flood control, retention of functional floodplains, deterrence and capture of waste and pollution
- ❖ **Advocate for Effective Enforcement of Laws** - enforcement of existing laws for water quality, homeless encampments, dumping, marijuana grows, etc. in priority areas
- ❖ **Invasive Plant Management** – identify priority areas for treatment, facilitate permit streamlining for riparian restoration projects, investigate a plant tax for problem species
- ❖ **Provide Education and Outreach** - efforts targeted at specific groups, communities, resource users, policy makers, stakeholders and/or the public to improve awareness and change knowledge, attitudes, and behaviors
- ❖ **Data Gathering and Analysis** – distribution of SGCNs relative to threats and habitat needs to inform the other strategies

