



State Wildlife Action Plan 2015 Update

Central California Coast & Coast Ranges Annual & Perennial Grasslands

Krysta Rogers, Environmental Scientist

November, 2013

Central Coast & Coast Ranges Ecoregion



Central Coast & Coast Ranges

Annual & Perennial Grasslands



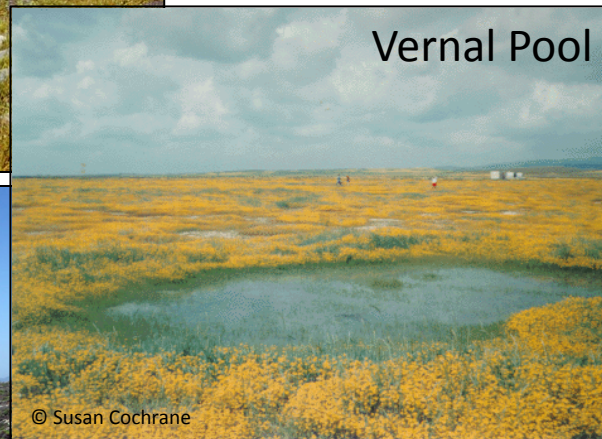
Coastal Scrub & Salt Marsh



Riparian



Vernal Pool



Coastal Dune & Bluff



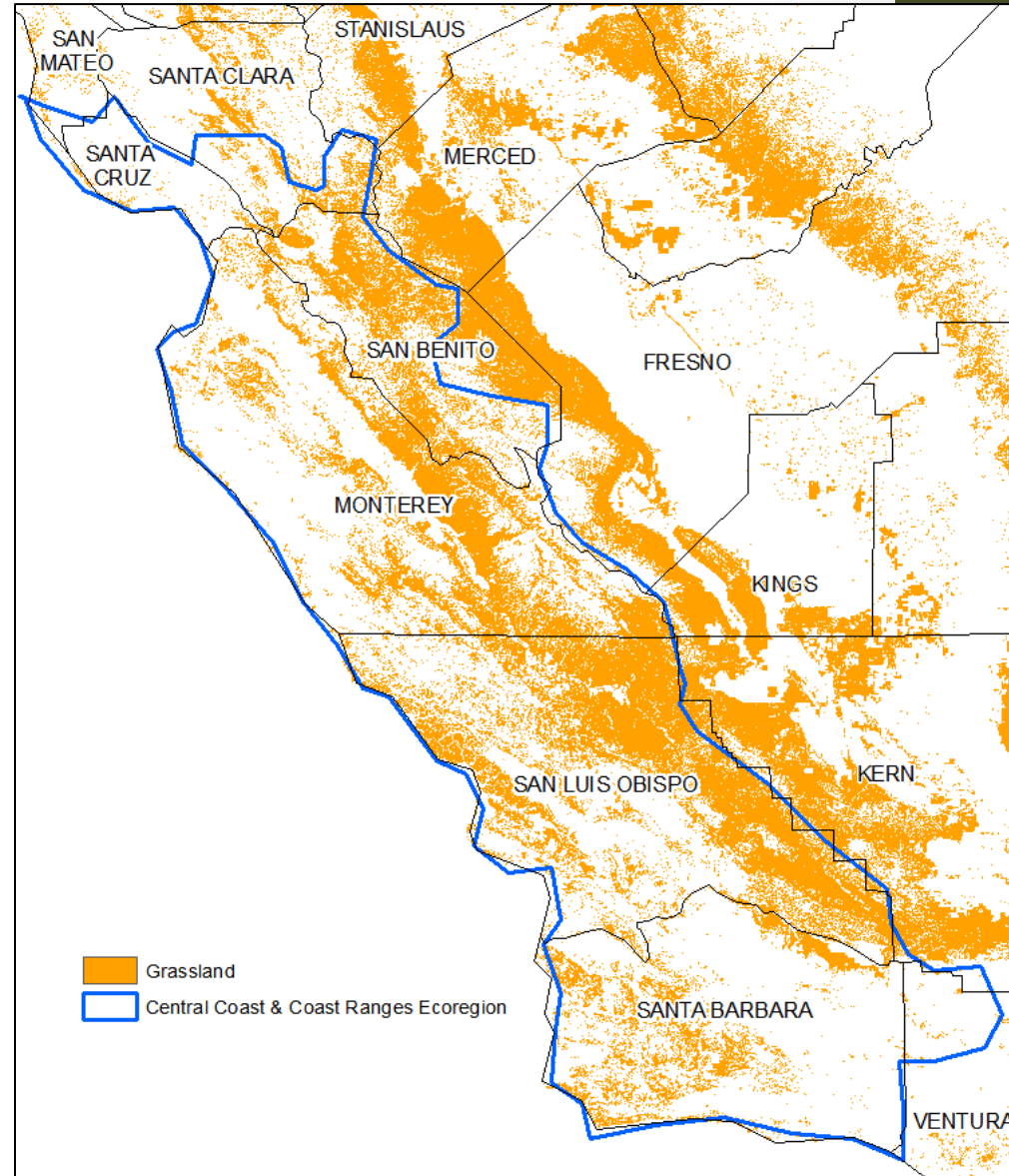
Hardwood & Conifer Forests



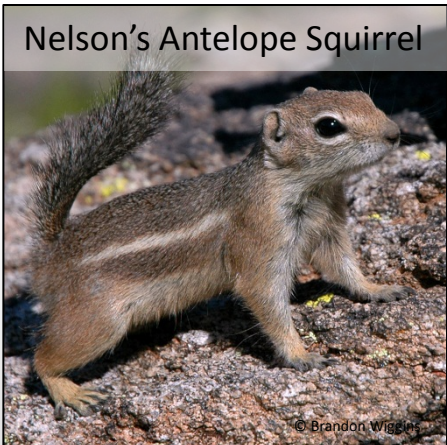
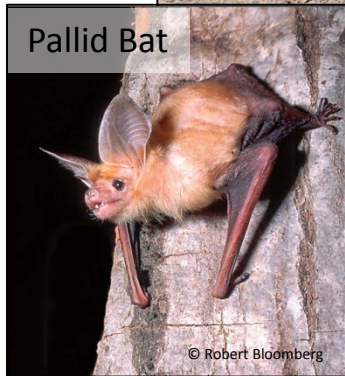
Target: Grasslands

- Why selected?
 - High biodiversity
 - High number of SGCN
 - High vulnerability ranking

Species Group	Total No.	SGCN No.
Amphibians	6	3
Reptiles	5	0
Birds	91	15
Mammals	28	6
<i>Totals</i>	<i>130</i>	<i>24</i>



Species of Concern



Environmental Stresses

- Change in:
 - Temperature & precipitation
 - Natural fire regimes
 - Community structure & composition
 - Sediment erosion & deposition regimes
 - Soil chemistry
 - Water levels & hydroperiod



Human Related Impacts

Residential & Commercial Development



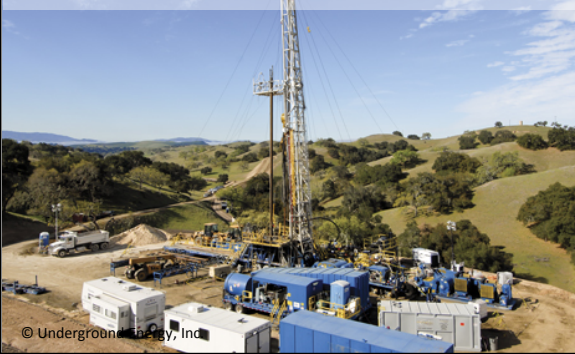
Fire Suppression



Invasive, non-native plants & animals



Energy Development & Operations



Inappropriate grazing



Conversion to Cropland



Strategies

- **Data Collection & Analysis**
- **Input on Land Use Planning**
- **Partner Engagement**
- **Environmental Review**



Questions





State Wildlife Action Plan 2015 Update

Central California Coast & Coast Ranges Riparian Habitat

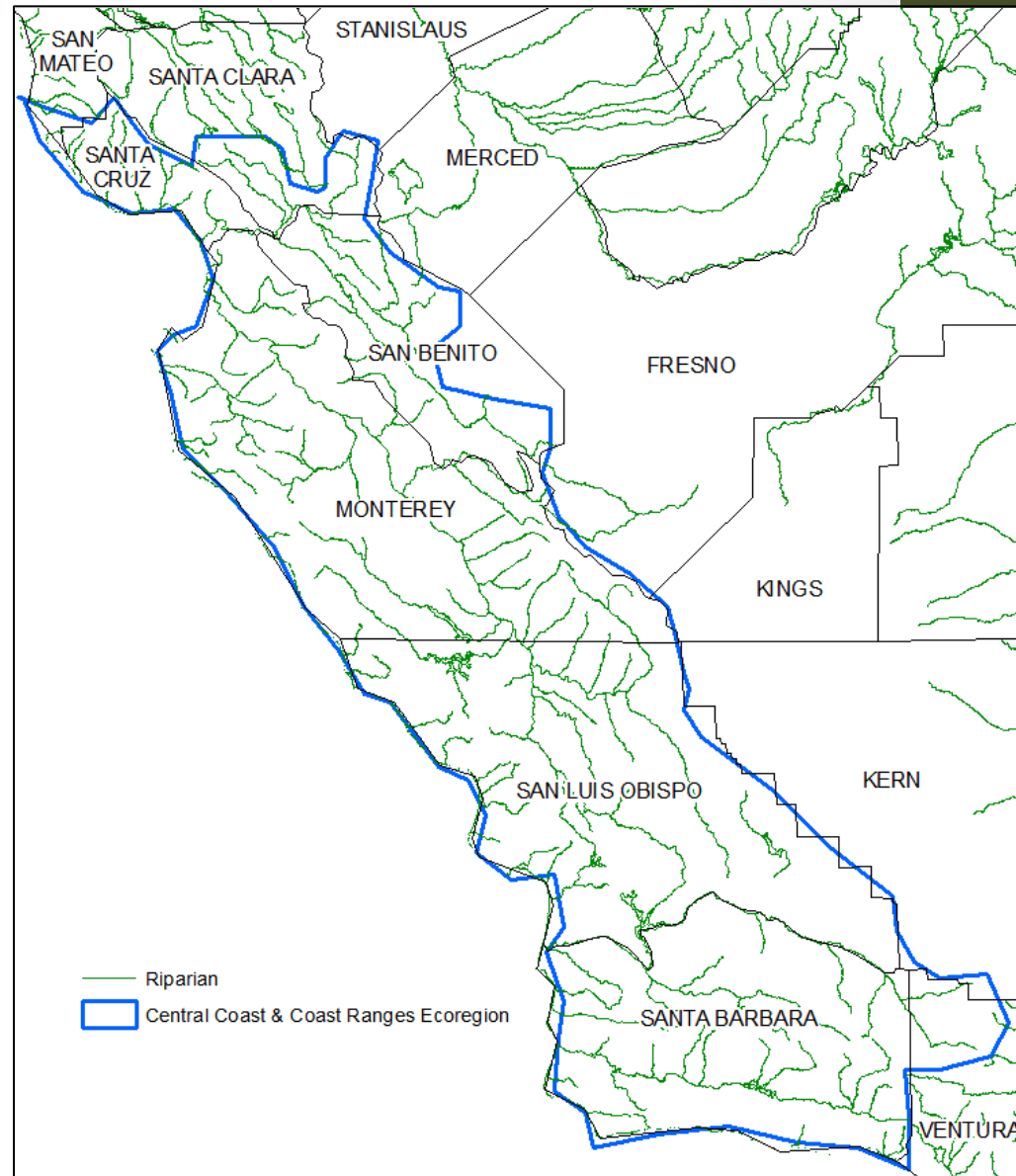
Krysta Rogers, Environmental Scientist

November, 2013

Target: Riparian Habitat

- Why selected?
 - High biodiversity
 - High number of SGCN
 - High vulnerability ranking

Species Group	Total No.	SGCN No.
Amphibians	12	2
Reptiles	16	3
Birds	110	8
Mammals	36	4
<i>Totals</i>	<i>174</i>	<i>17</i>



Species of Concern

California Giant Salamander



Foothill Yellow-legged Frog



Yellow Billed Cuckoo



Long-eared Owl



Long-legged Myotis



Salinas Ornate Shrew



Dusky-footed Woodrat



Ringtail Cat



Bank Swallow



Environmental Stresses

- Change in:
 - Temperature & precipitation
 - Natural fire regimes
 - Community structure & composition
 - Sediment erosion & deposition regimes
 - Runoff & river flow
 - Water levels & hydroperiod
 - Groundwater tables
 - Pollutants



Human Related Impacts

Residential & Commercial Development



Removal of Riparian Vegetation

© HDR, Inc.

Mining & Quarrying



© Granit Rock, Inc.

Dams & Water Diversions



© Quest Structures

Invasive, non-native plants & animals



© www.battle-creek.net

Changes in Amount & Timing of Water Availability



Pollution from Agriculture & Residential Areas



Channelization for Flood Control

Strategies

- **Data Collection & Analysis**
- **Outreach & Education**
- **Input on Land Use Planning**
- **Environmental Review**



Questions

