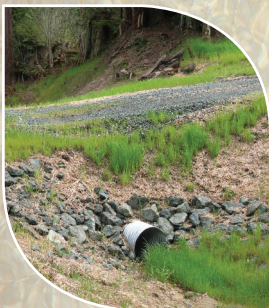


# LAKE and STREAMBED ALTERATION

## When is Notification of Lake or Streambed Alteration (LSA) Required?

Fish and Game Code section 1602 requires an entity to notify the California Department of Fish and Wildlife (CDFW) prior to commencing any activity that may do one or more of the following:



- ◆ Substantially divert or obstruct the natural flow of any river, stream or lake;
- ◆ Substantially change or use any material from the bed, channel or bank of any river, stream or lake; or
- ◆ Deposit debris, waste or other materials that could pass into any river, stream or lake.

Please note that “any river, stream, or lake” includes those that are episodic (they are dry for periods of time) as well as those that are perennial (they flow year round).

## When is an LSA Agreement Required?

CDFW requires an LSA Agreement when it determines that the activity, as described in a complete LSA notification, may substantially adversely affect existing fish or wildlife resources.

An LSA Agreement includes measures necessary to protect existing fish and wildlife resources.

CDFW may suggest ways to modify your project that would eliminate or reduce harmful impacts to fish and wildlife resources.

Before issuing an LSA Agreement, CDFW must comply with the California Environmental Quality Act (CEQA).



Episodic



Perennial



For more information about LSA Notification, LSA Agreements, and CEQA compliance, you are encouraged to consult with CDFW staff in the region where your activity will occur.



### How Do I Notify CDFW?

The LSA notification form, notification process and instructions, and fee schedule are located on the LSA Website:

[wildlife.ca.gov/Conservation/LSA](http://wildlife.ca.gov/Conservation/LSA)

You can obtain notification materials from the following regional offices:

#### Northern Region (R1)

##### Inland

601 Locust Street  
Redding, CA 96001  
(530) 225-2367

#### Northern Region (R1)

##### Coastal

619 Second Street  
Eureka, CA 95501  
(707) 441-2075

#### North Central Region (R2)

1701 Nimbus Road, Suite A  
Rancho Cordova, CA 95670  
(916) 358-2885

#### Bay Delta Region (R3)

2825 Cordelia Rd., Ste. 100  
Fairfield, CA 94534  
(707) 428-2002

#### Central Region (R4)

1234 East Shaw Avenue  
Fresno, CA 93710  
(559) 243-4593

#### South Coast Region (R5)

3883 Ruffin Road  
San Diego, CA 92123  
(858) 636-3160

#### Inland Deserts Region (R6)

3602 Inland Empire Blvd.  
Suite C 220  
Ontario, CA 91764  
(909) 484-0523



*Smartphone scan  
for more information*