



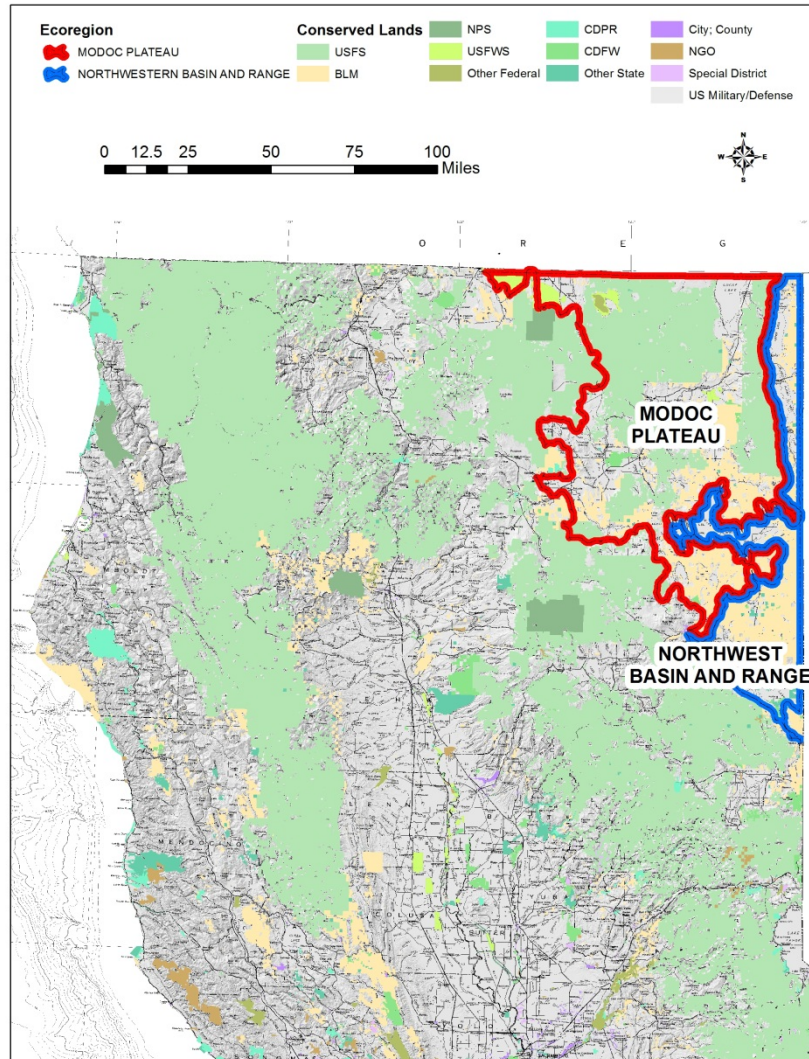
State Wildlife Action Plan 2015 Update

Modoc Plateau & Northwest Basin and
Range
Sagebrush Steppe

Richard Shinn Jr., Brad Henderson, Bob Hawkins

12 November 2013

Modoc Plateau/Northwest Basin and Range





- Western edge of Great Basin
- High desert plant communities, sagebrush, perennial grasslands, juniper woodlands, conifer forests.

Species Associated with Target



Federal candidate

2007.03.22



CA SSC



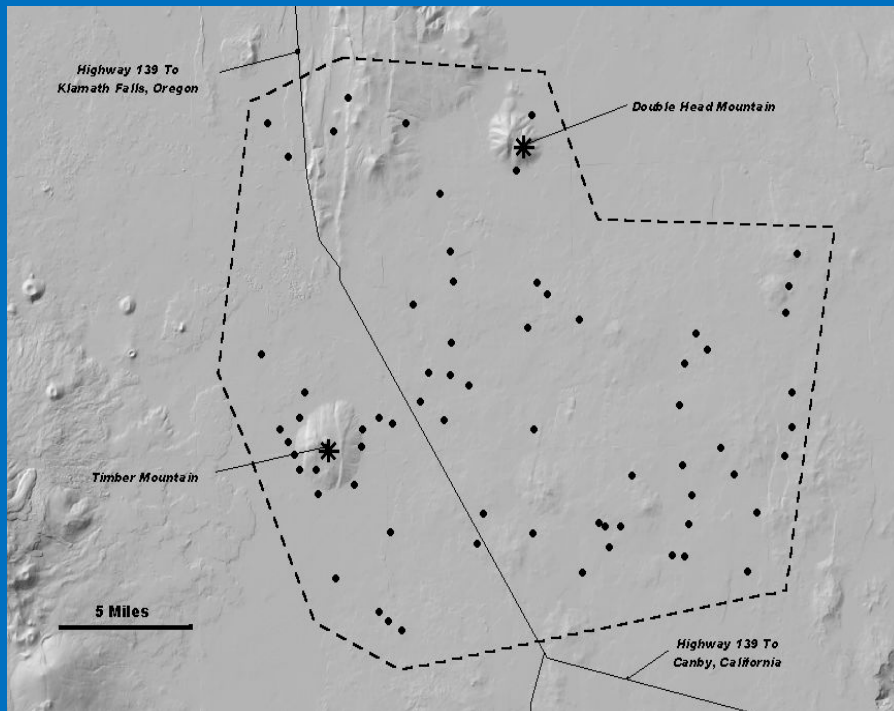
USFWS
BCC



Stresses and Threats

- Western juniper expansion
- Invasive annual grass (cheatgrass, medusahead)
- Fragmentation due to development/energy production
- 2015 - Potential ESA listing (sage-grouse) = land use restrictions

Vegetation Monitoring on Devil's Garden



- 69 linear transects and photo stations established and measured 4 times from 1957-1998
- Since 1967, tree overstory increased, live shrubs declined and dead shrubs increased

50 Years of Vegetation Change on Devil's Garden



1948



1998

50 years of vegetation change on Devil's Garden



1948



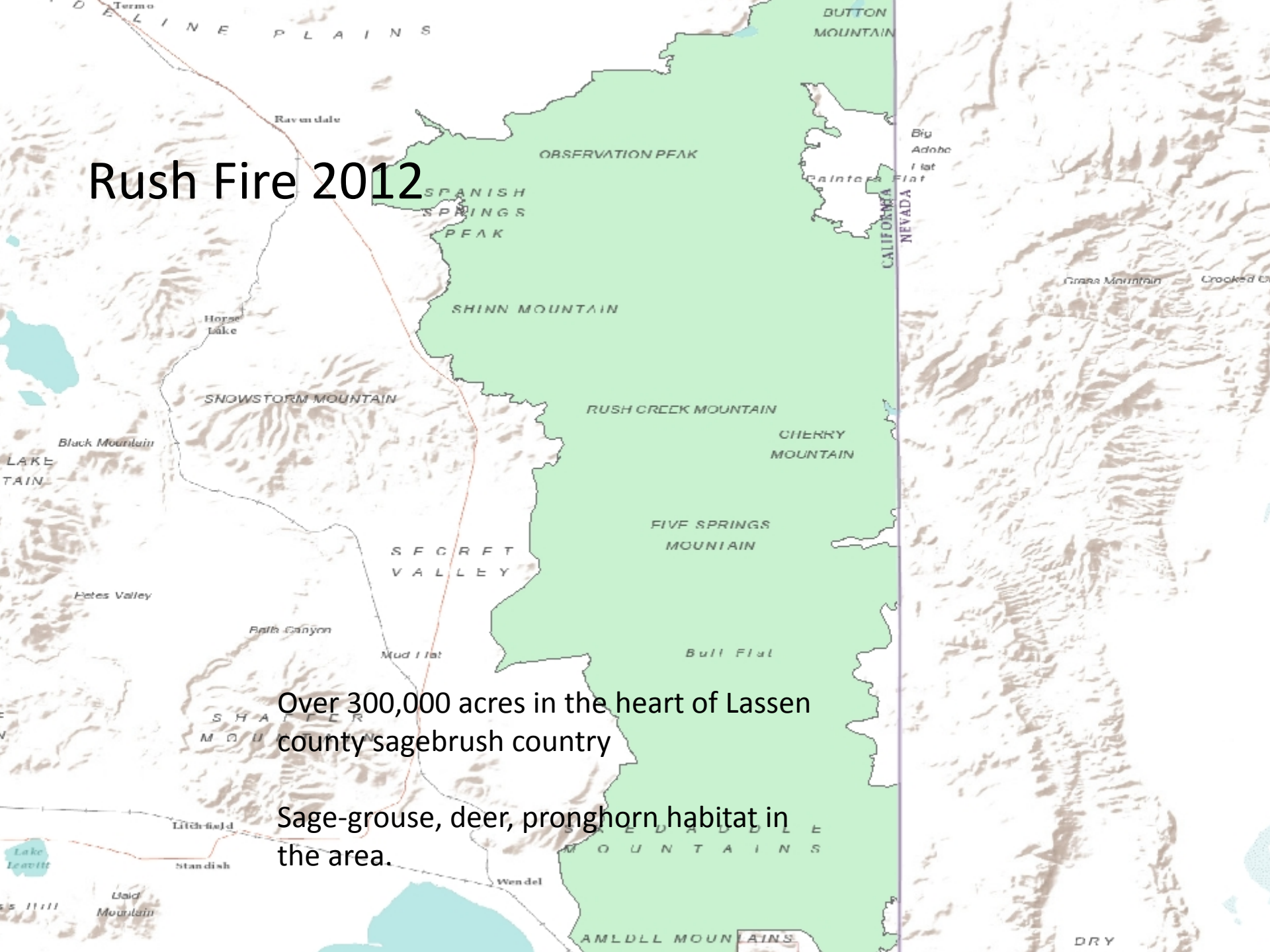
1998

Cheatgrass



Introduced non-native
Loves Fire
Undesirable for wildlife and cows
Unnatural fire frequencies

Rush Fire 2012



Over 300,000 acres in the heart of Lassen county sagebrush country

Sage-grouse, deer, pronghorn habitat in the area.





Post fire landscape



Invasive species management objectives

- Reduce spread of invasive annual grasses/juniper
- Remove pockets of invasives from otherwise intact sagesteppe habitats
- Restoration in highest priority areas
- Coordinate management efforts

Management Activities

A photograph of a mountain landscape. In the foreground, a deer with large antlers is walking through tall, dry grass. The background shows a rocky hillside with sparse vegetation under a clear sky.

- Identify important habitats to guide fire management during fires (Save the really good stuff)
- Establish priority areas for restoration
- Pilot projects and/or research potential management practices
- Secure funding for larger scale projects

Thanks...any questions?

