



# CALIFORNIA DEPARTMENT OF FISH & GAME

## MARBLE/CLIPPER MOUNTAINS

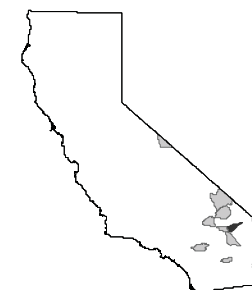
### Nelson Bighorn Sheep Zone 1



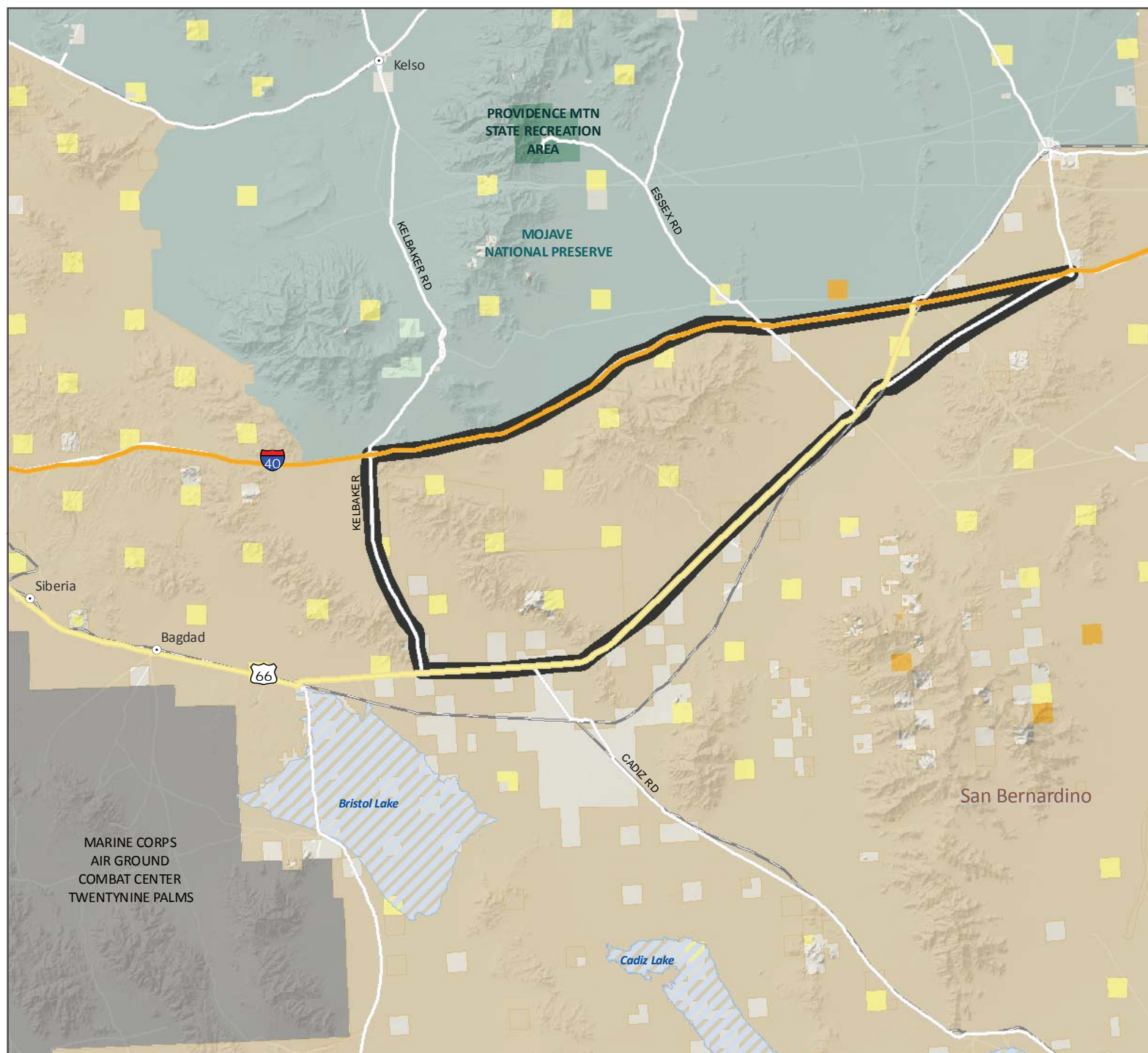
San Bernardino County

-  Marble/Clipper Mountains
-  CA Dept. of Fish & Game
-  CA Dept. of Parks & Rec.
-  U.S. Fish & Wildlife Service
-  U.S. Forest Service
-  U.S. National Park Service
-  U.S. BLM
-  CA State Lands Commission
-  U. S. Department of Defense

Note: Hunt boundary shown is an approximation. Hunters are responsible for knowing the exact boundary locations as described within Section 362, Title 14, Calif. Code of Regs.



0 5 10 Miles



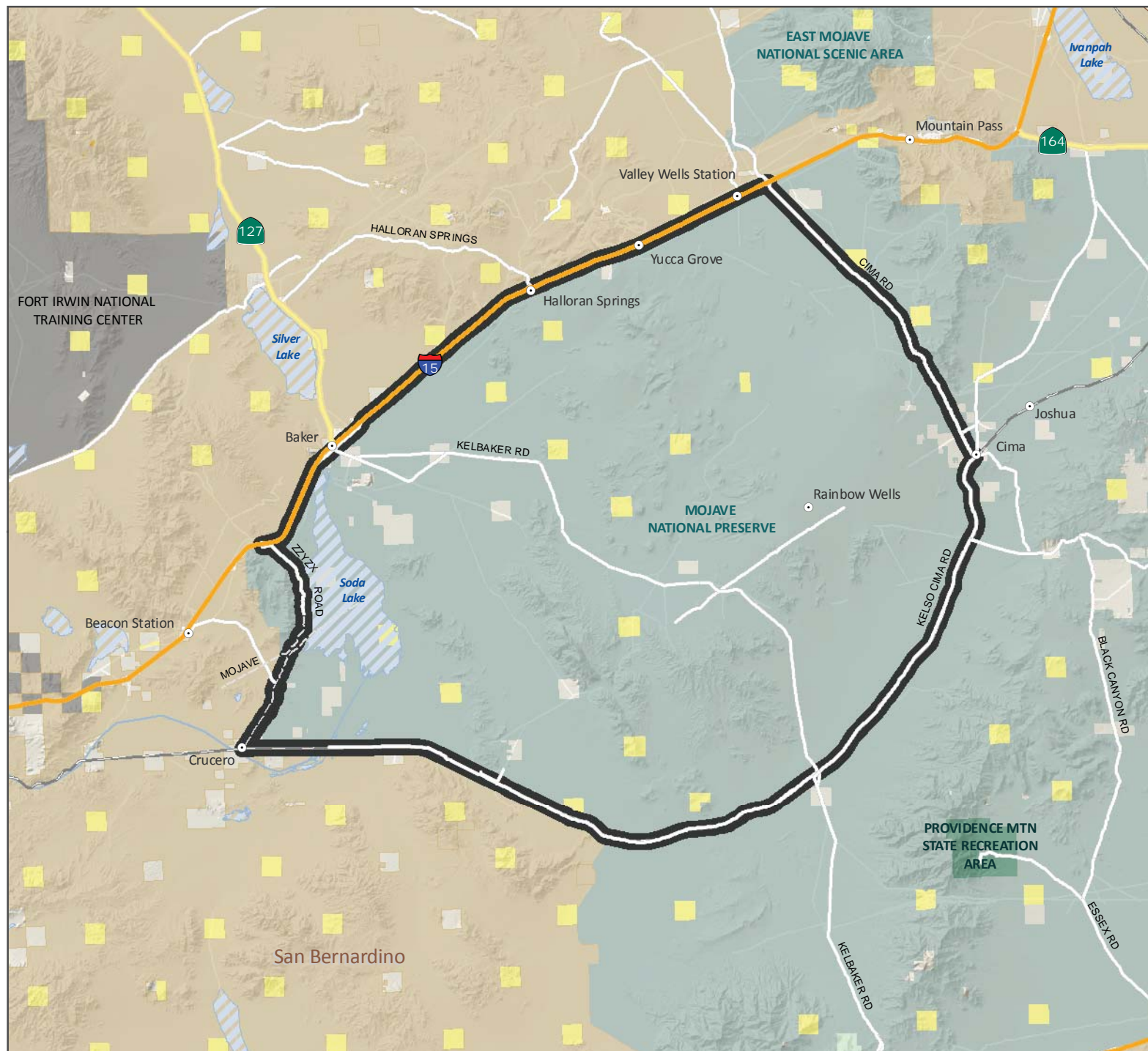
# CALIFORNIA DEPARTMENT OF FISH & GAME

## KELSO PEAK OLD DAD MOUNTAINS

### Nelson Bighorn Sheep Zone 2

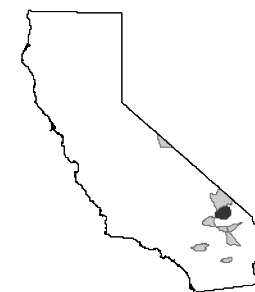


San Bernardino County



- Kelso Peak/Old Dad Mnts.
- CA Dept. of Fish & Game
- CA Dept. of Parks & Rec.
- U.S. Fish & Wildlife Service
- U.S. Forest Service
- U.S. National Park Service
- U.S. BLM
- CA State Lands Commission
- U. S. Department of Defense

Note: Hunt boundary shown is an approximation. Hunters are responsible for knowing the exact boundary locations as described within Section 362, Title 14, Calif. Code of Regs.



0 5 10 Miles



# CALIFORNIA DEPARTMENT OF FISH & GAME

## CLARK/KINGSTON MOUNTAIN RANGES

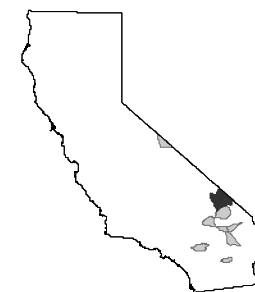
### Nelson Bighorn Sheep Zone 3



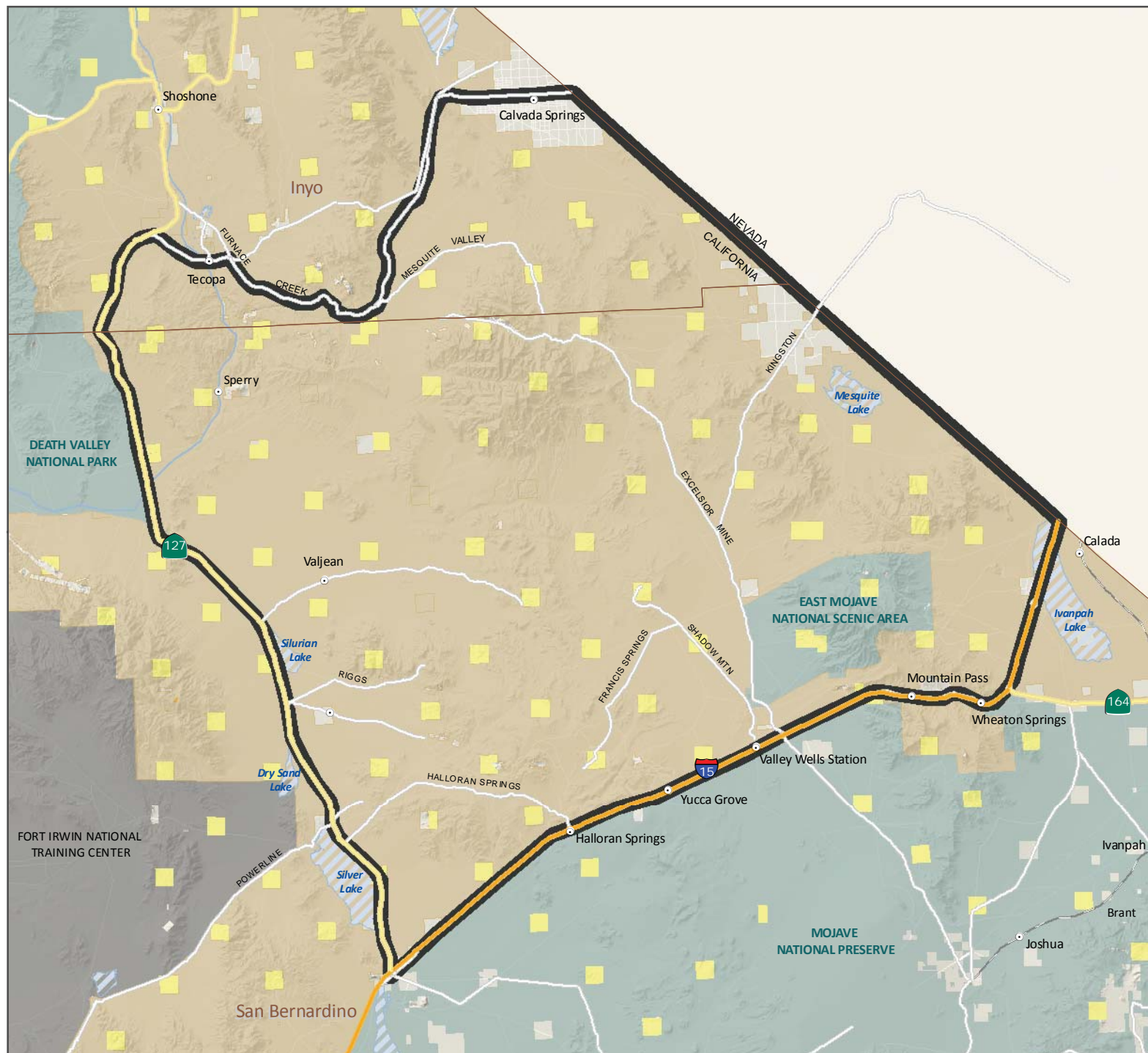
San Bernardino  
and Inyo County

-  Clark/Kingston Mtn. Ranges
-  CA Dept. of Fish & Game
-  CA Dept. of Parks & Rec.
-  U.S. Fish & Wildlife Service
-  U.S. Forest Service
-  U.S. National Park Service
-  U.S. BLM
-  CA State Lands Commission
-  U. S. Department of Defense

Note: Hunt boundary shown is an approximation. Hunters are responsible for knowing the exact boundary locations as described within Section 362, Title 14, Calif. Code of Regs.



0 5 10 Miles





# CALIFORNIA DEPARTMENT OF FISH & GAME

## OROCOPIA MOUNTAINS

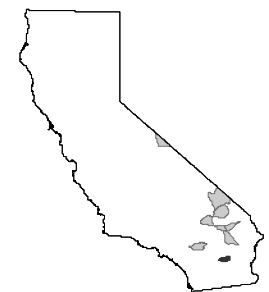
### Nelson Bighorn Sheep Zone 4



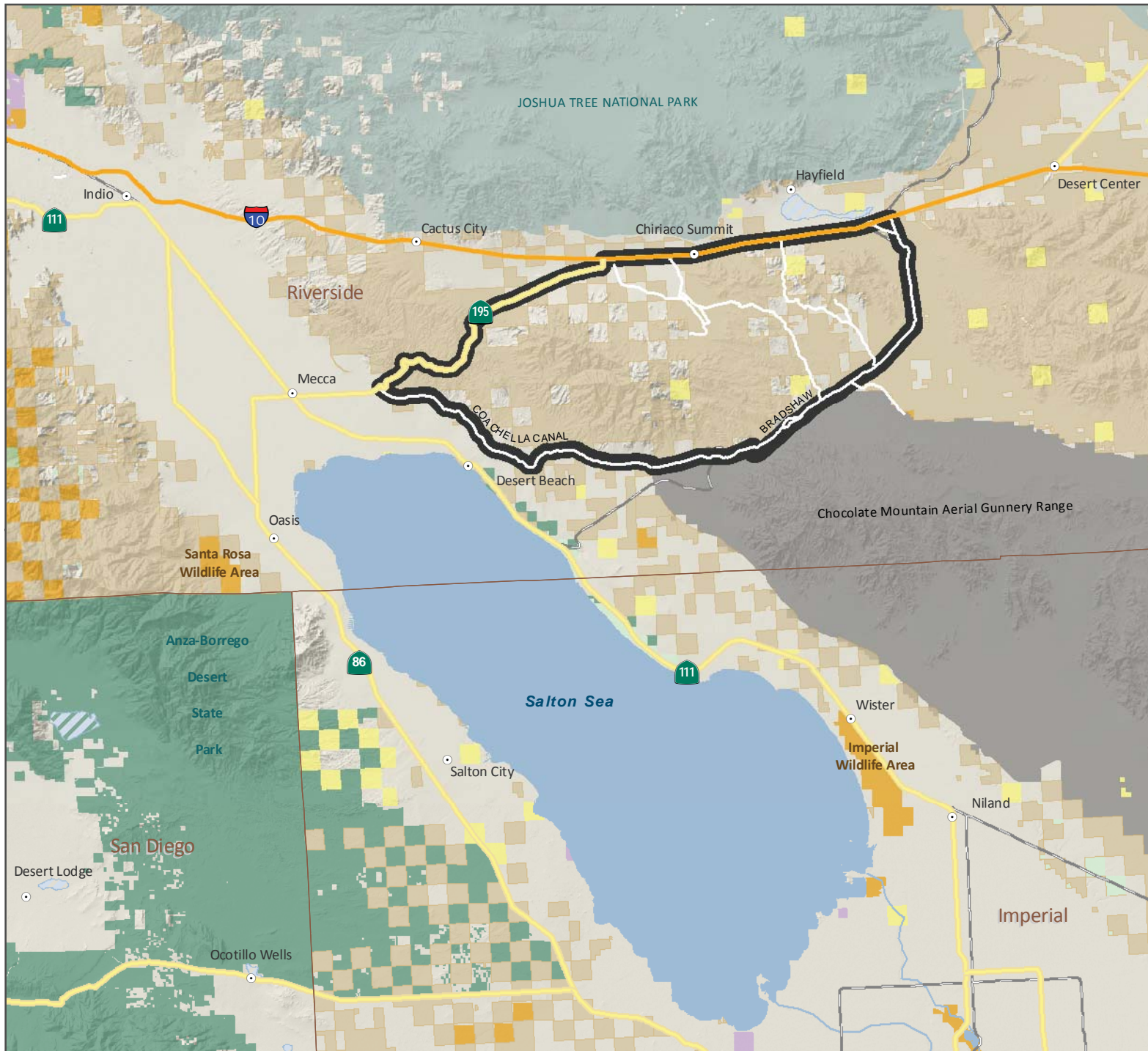
Riverside County

-  Orocoopia Mountains
-  CA Dept. of Fish & Game
-  CA Dept. of Parks & Rec.
-  U.S. Fish & Wildlife Service
-  U.S. Forest Service
-  U.S. National Park Service
-  U.S. BLM
-  CA State Lands Commission
-  U. S. Department of Defense

Note: Hunt boundary shown is an approximation. Hunters are responsible for knowing the exact boundary locations as described within Section 362, Title 14, Calif. Code of Regs.



0 5 10 Miles





# CALIFORNIA DEPARTMENT OF FISH & GAME

## SAN GORGONIO MOUNTAINS

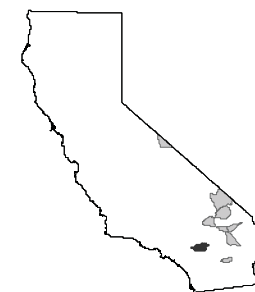
### Nelson Bighorn Sheep Zone 5



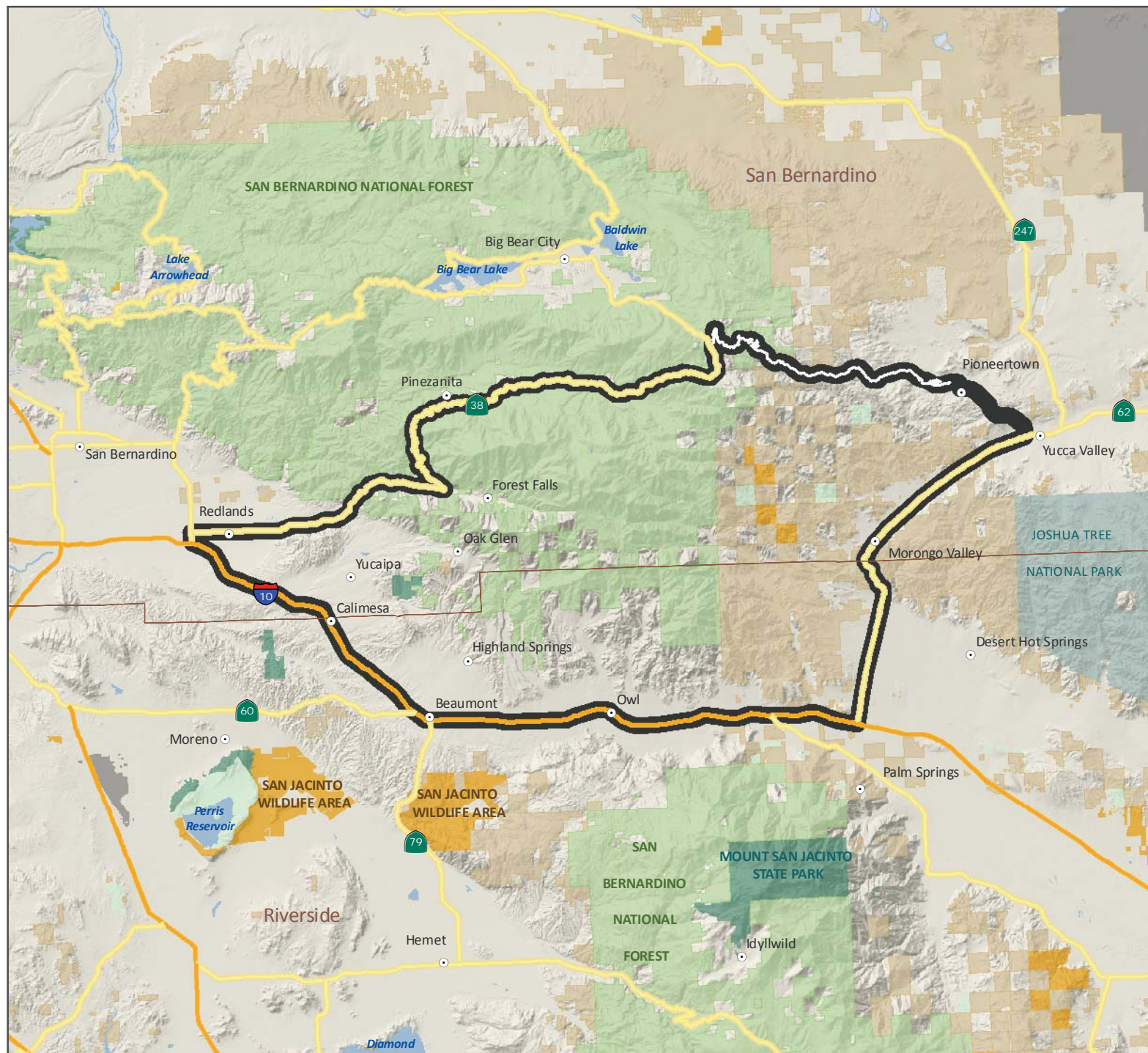
San Bernardino &  
Riverside County

- San Gorgonio Mountains
- CA Dept. of Fish & Game
- CA Dept. of Parks & Rec.
- U.S. Fish & Wildlife Service
- U.S. Forest Service
- U.S. National Park Service
- U.S. BLM
- U. S. Department of Defense

Note: Hunt boundary shown is an approximation. Hunters are responsible for knowing the exact boundary locations as described within Section 362, Title 14, Calif. Code of Regs.



0 5 10 Miles





# CALIFORNIA DEPARTMENT OF FISH & GAME

## SHEEP HOLE MOUNTAINS

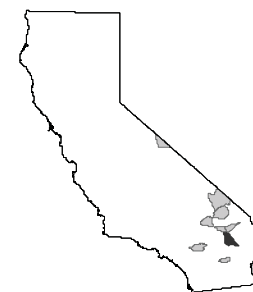
### Nelson Bighorn Sheep Zone 6



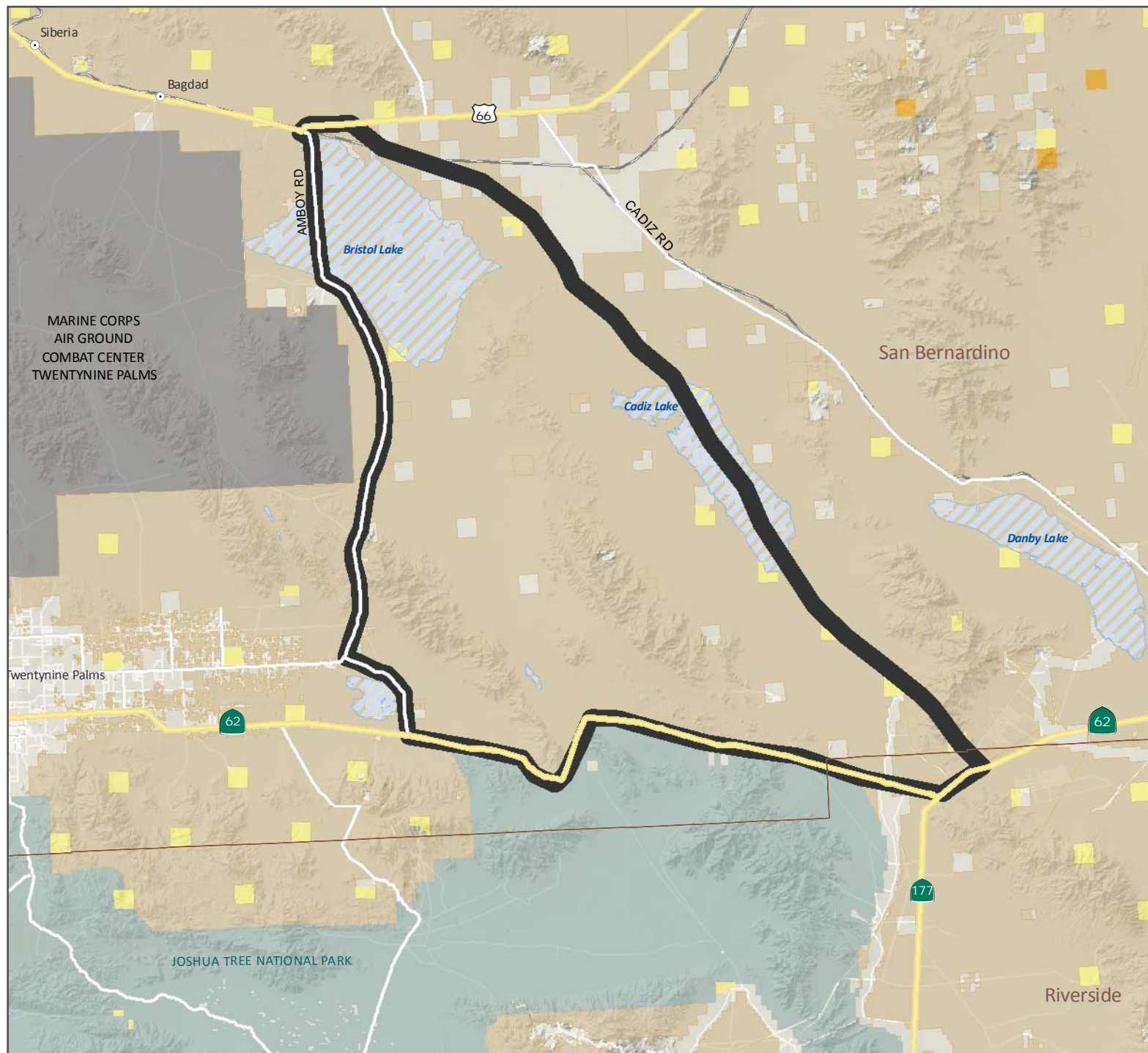
San Bernardino &  
Riverside County

- Sheep Hole Mountains
- CA Dept. of Fish & Game
- CA Dept. of Parks & Rec.
- U.S. Fish & Wildlife Service
- U.S. Forest Service
- U.S. National Park Service
- U.S. BLM
- CA State Lands Commission
- U. S. Department of Defense

Note: Hunt boundary shown is an approximation. Hunters are responsible for knowing the exact boundary locations as described within Section 362, Title 14, Calif. Code of Regs.



0 5 10 Miles











# CALIFORNIA DEPARTMENT OF FISH & GAME

## WHITE MOUNTAINS

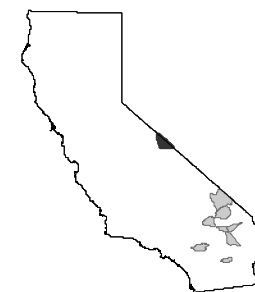
### Nelson Bighorn Sheep Zone 7



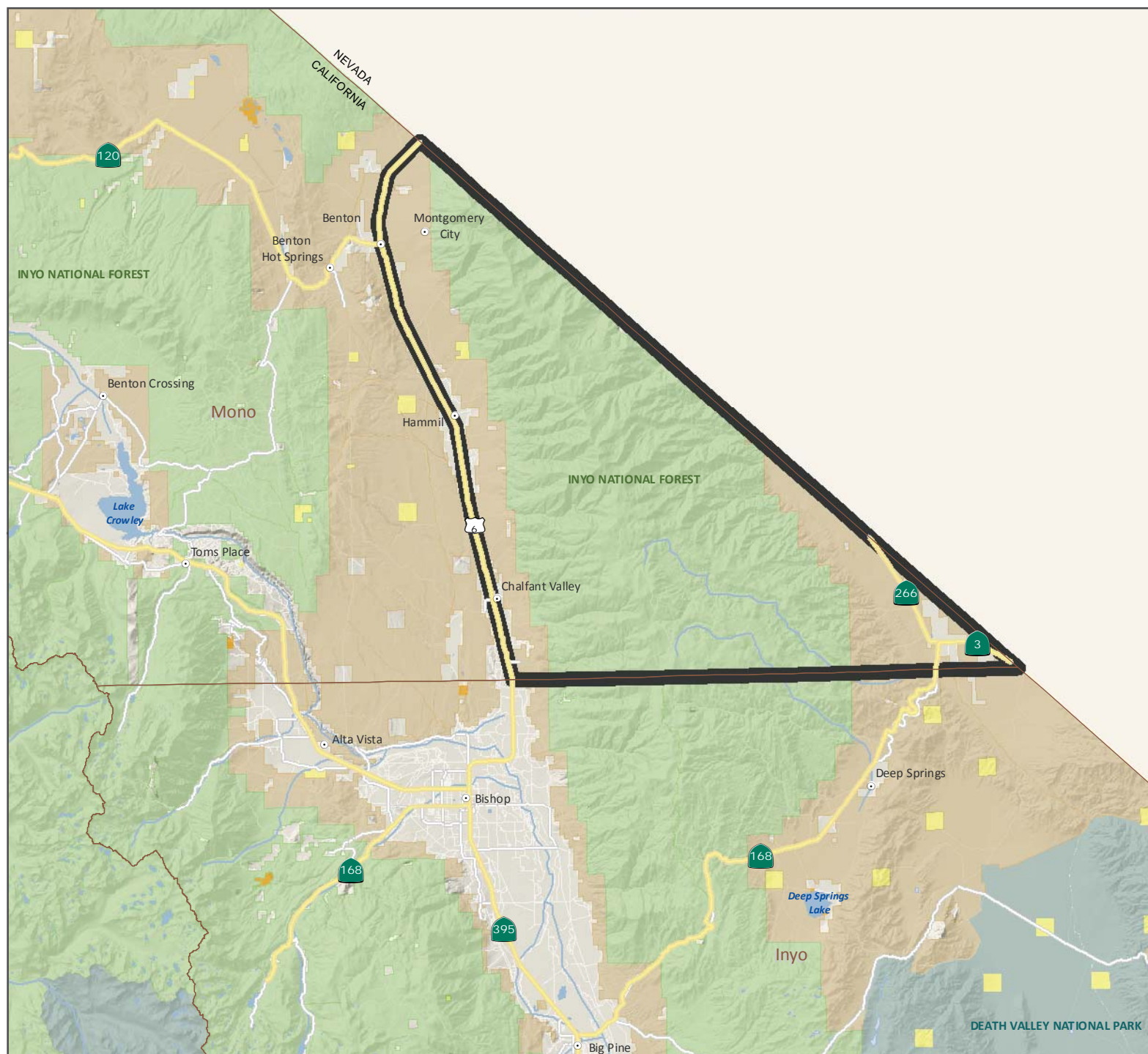
Mono County

-  White Mountains
-  CA Dept. of Fish & Game
-  CA Dept. of Parks & Rec.
-  U.S. Fish & Wildlife Service
-  U.S. Forest Service
-  U.S. National Park Service
-  U.S. BLM
-  CA State Lands Commission

Note: Hunt boundary shown is an approximation. Hunters are responsible for knowing the exact boundary locations as described within Section 362, Title 14, Calif. Code of Regs.



0 5 10 Miles





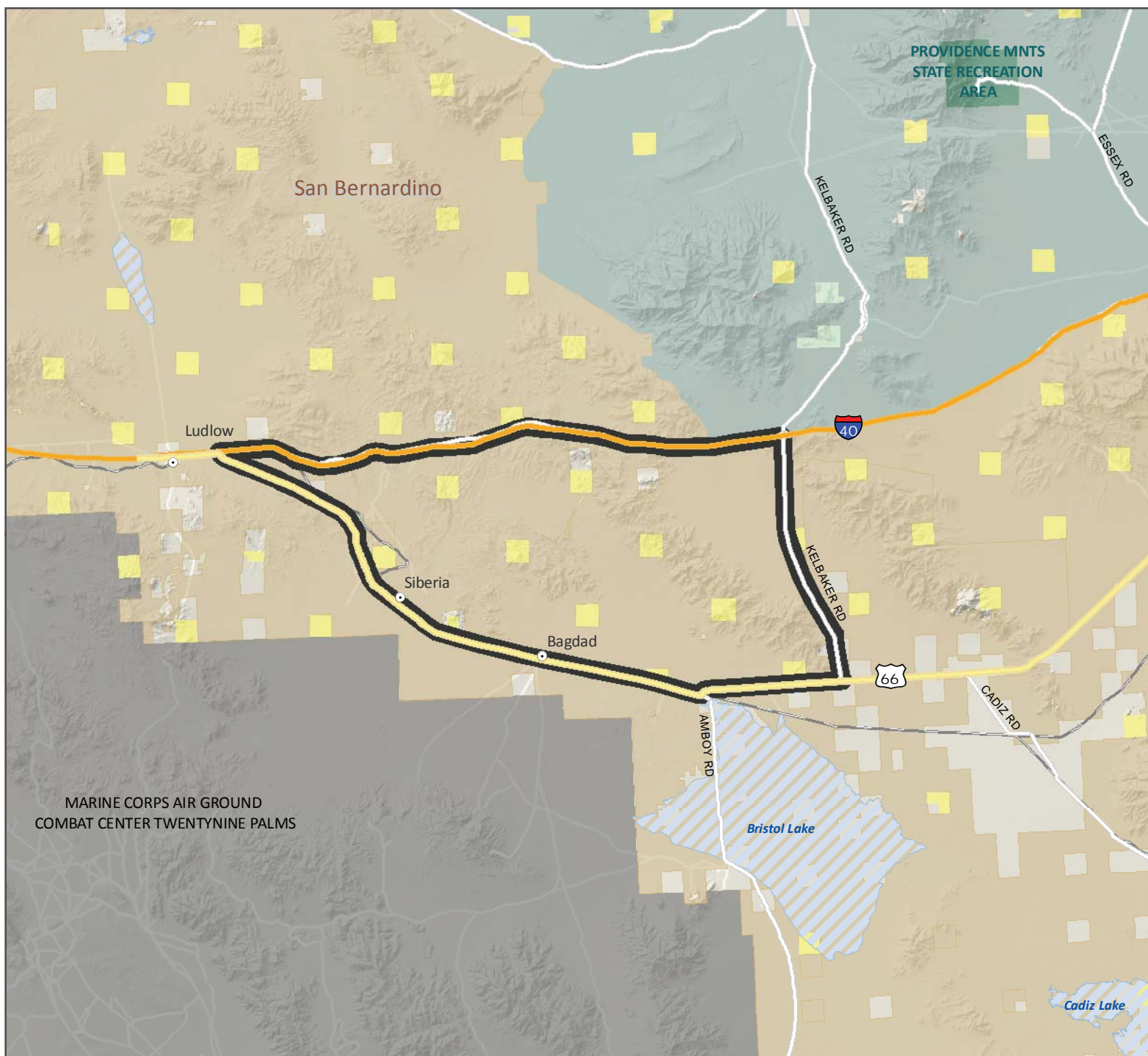
# CALIFORNIA DEPARTMENT OF FISH & GAME

## SOUTH BRISTOL MOUNTAINS

### Nelson Bighorn Sheep Zone 8

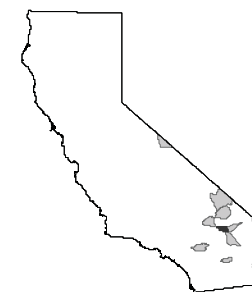


San Bernardino County



- South Bristol Mountains
- CA Dept. of Fish & Game
- CA Dept. of Parks & Rec.
- U.S. Fish & Wildlife Service
- U.S. Forest Service
- U.S. National Park Service
- U.S. BLM
- CA State Lands Commission
- U. S. Department of Defense

Note: Hunt boundary shown is an approximation. Hunters are responsible for knowing the exact boundary locations as described within Section 362, Title 14, Calif. Code of Regs.



0 2.5 5 Miles

File path: 05789 JAN2022



# CALIFORNIA DEPARTMENT OF FISH & GAME

## CADY MOUNTAINS

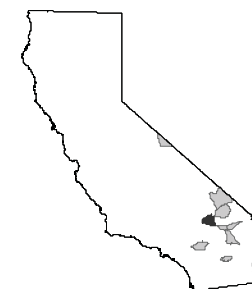
### Nelson Bighorn Sheep Zone 9



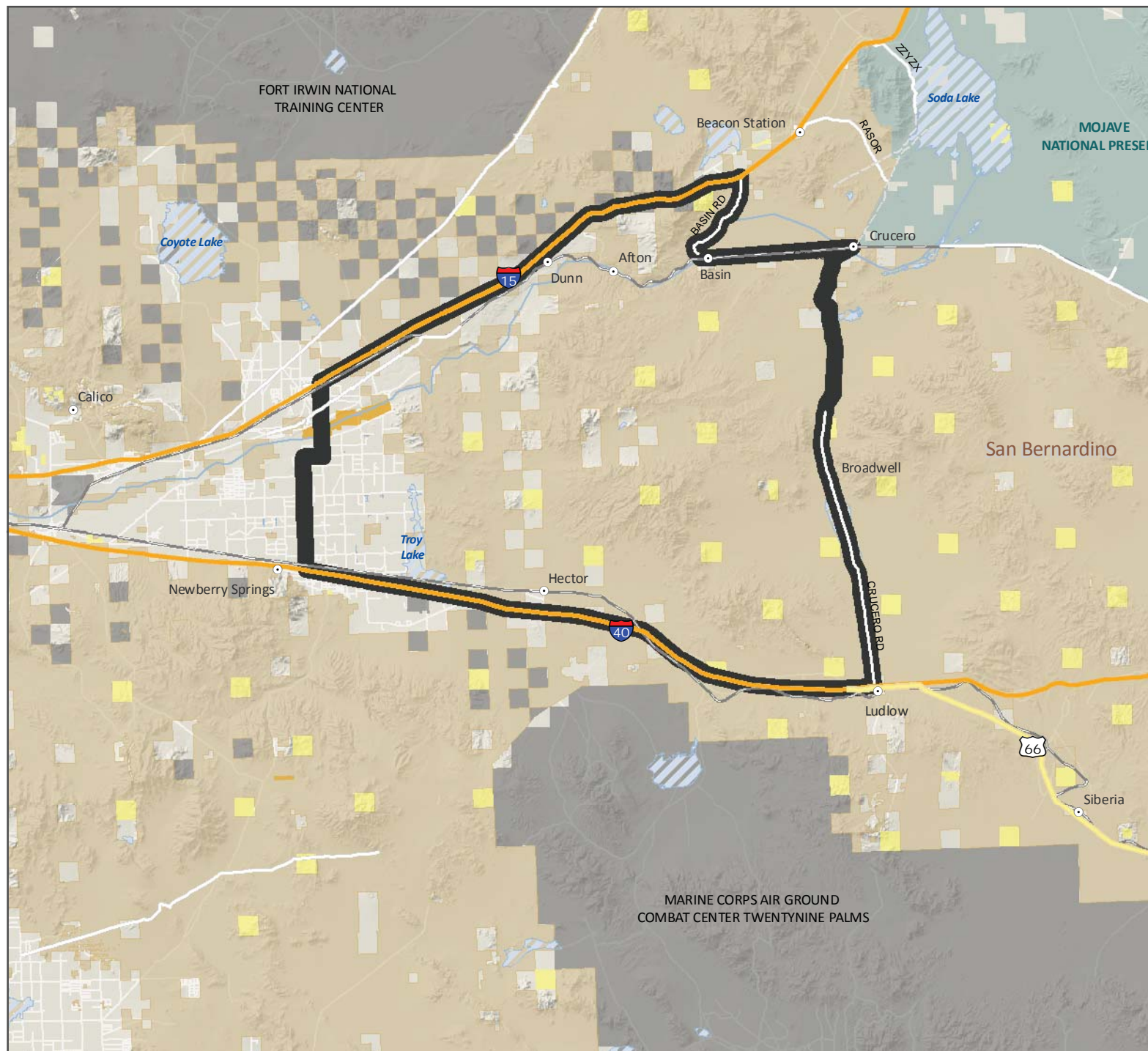
San Bernardino County

-  Cady Mountains
-  CA Dept. of Fish & Game
-  CA Dept. of Parks & Rec.
-  U.S. Fish & Wildlife Service
-  U.S. Forest Service
-  U.S. National Park Service
-  U.S. BLM
-  CA State Lands Commission
-  U. S. Department of Defense

Note: Hunt boundary shown is an approximation. Hunters are responsible for knowing the exact boundary locations as described within Section 362, Title 14, Calif. Code of Regs.



0 5 10 Miles



File path: 070701-012022