

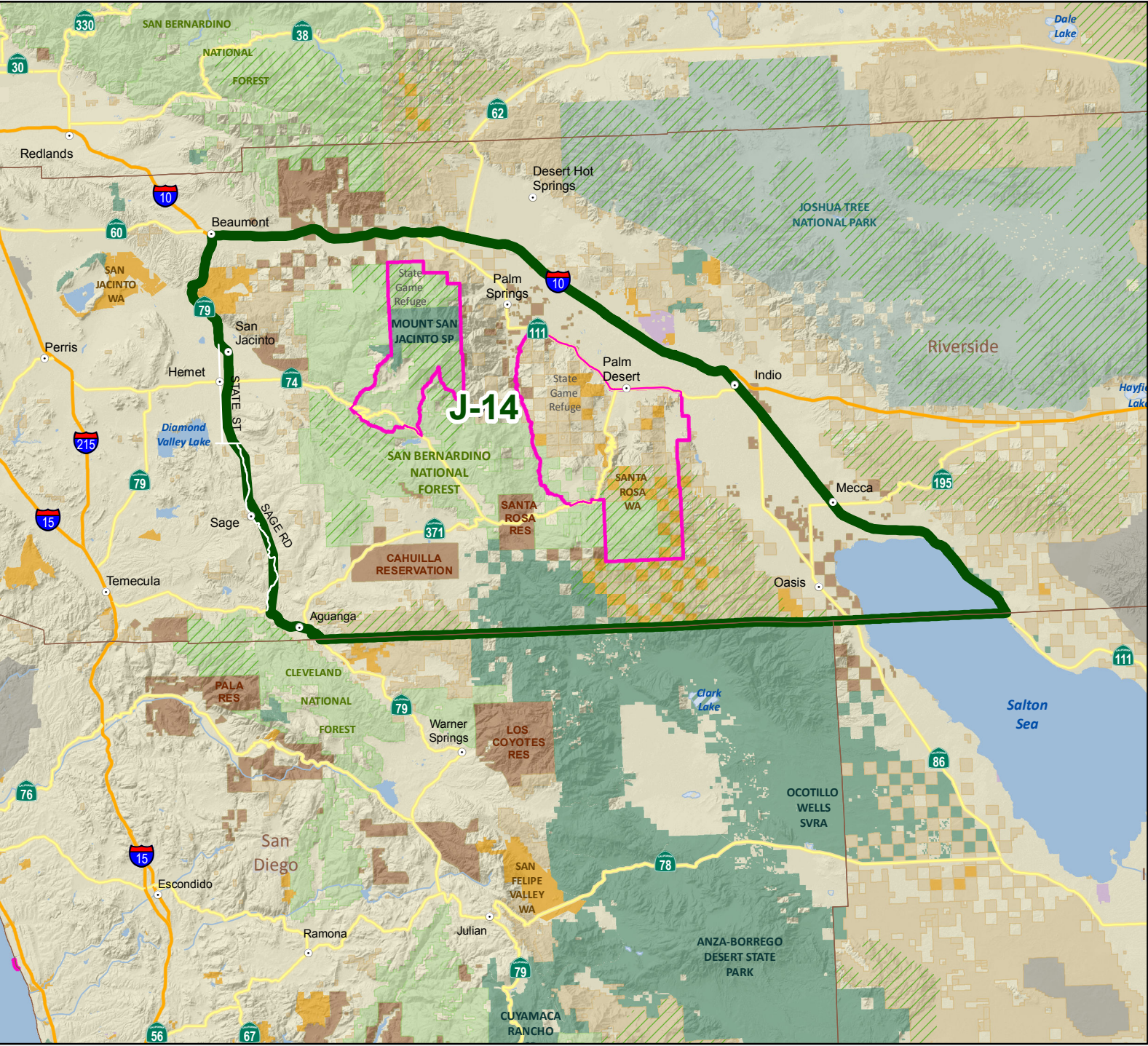
CALIFORNIA DEPARTMENT OF FISH & WILDLIFE

APPRENTICE
DEER HUNT J-14

Riverside Apprentice
Either-Sex Deer Hunt

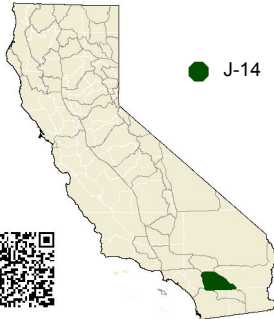


Riverside County



- J-14
- CA Dept. of Fish & Wildlife
- CA Dept. of Parks & Rec.
- U.S. Fish & Wildlife Service
- U.S. Forest Service
- U.S. National Park Service
- U.S. BLM
- Wilderness Area
- Tribal Land
- Game Refuge - State protected reserve closed to deer hunting.
- U. S. Dept. of Defense

Hunt boundary shown is an approximation. Hunters are responsible for knowing the exact boundary locations as described within Calif. Code of Regs Title 14, Section 360(c) Additional Hunts.(36) J-14 (Riverside Apprentice Either-Sex Deer Hunt).



0 5 10 Miles