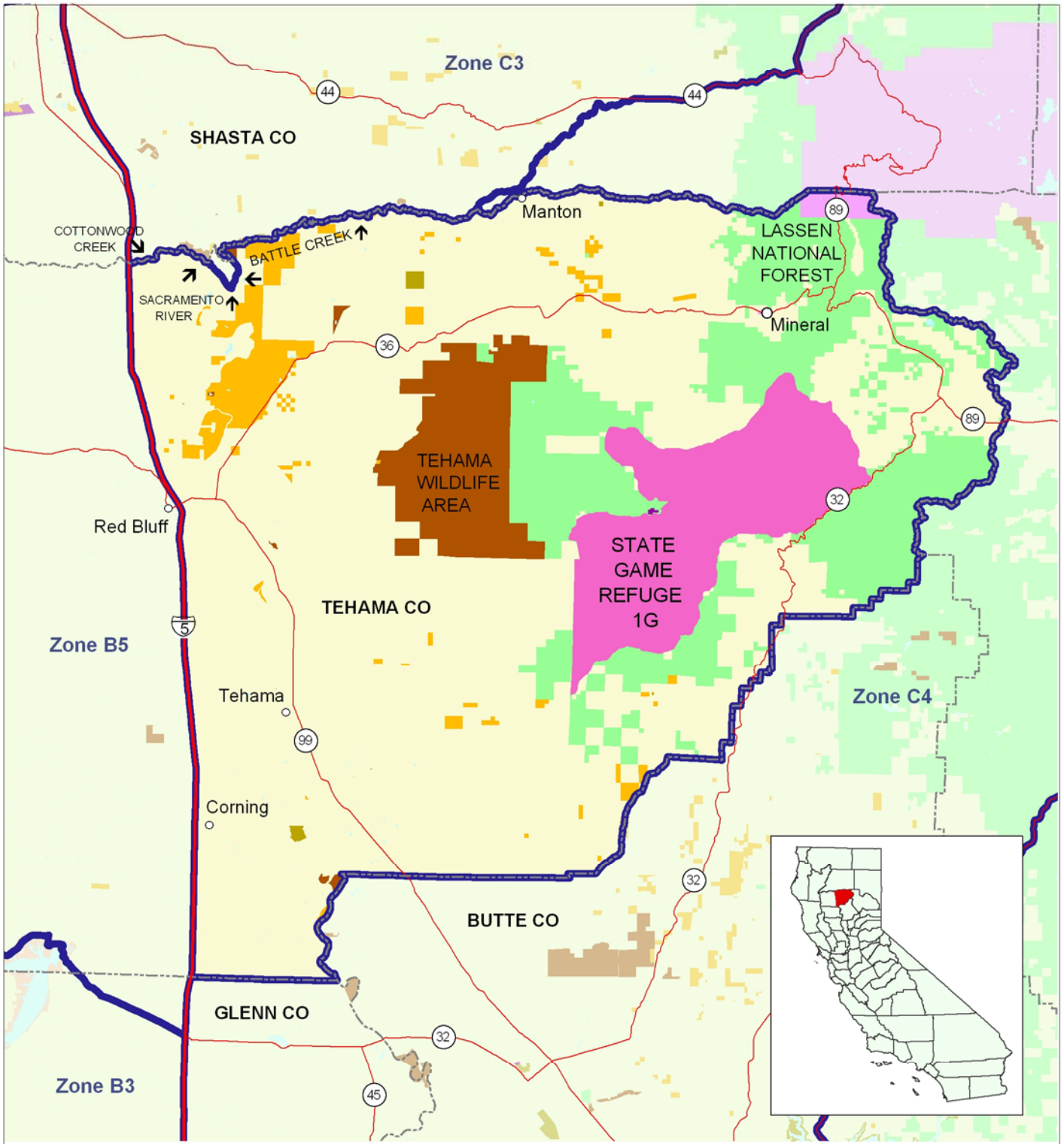


Hunt Number J-21 (East Tehama Apprentice Either-Sex Deer Hunt)



US Forest Service	Refuges*	County Line
Bureau of Indian Affairs	Private**	Deerzone
Bureau of Land Management	Other Gov't Agency	Interstate Route
CA Dept. of Fish and Game	Lake	U.S. Route
National Parks		State or County Route
		Boundary Feature Change

0 4 8 12 Miles

* State protected reserves closed to deer hunting.
 ** Private lands may be open or closed to deer hunting -- inquire locally.
 This map should serve only as a guide to the general locations of deer hunting zones. Detailed legal descriptions of deer hunting zones and deer hunt boundaries are provided in Section 360 of "California Hunting Regulations".