

Locating and resurveying the Grinnell-era pika locations in the Lassen Transect region of northern California

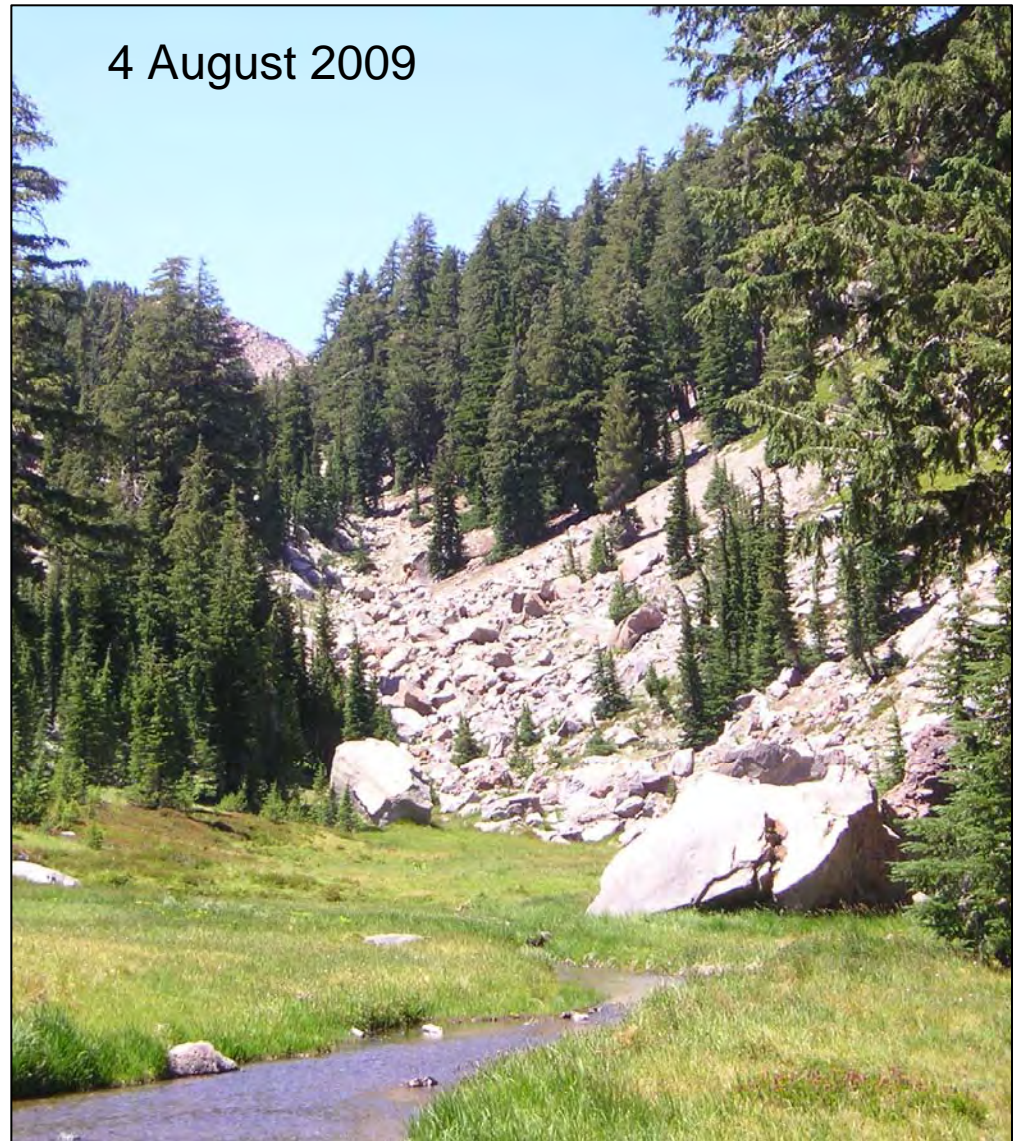
John Perrine, California Polytechnic State University, San Luis Obispo

12 September 1923



J. Dixon, #4226

4 August 2009

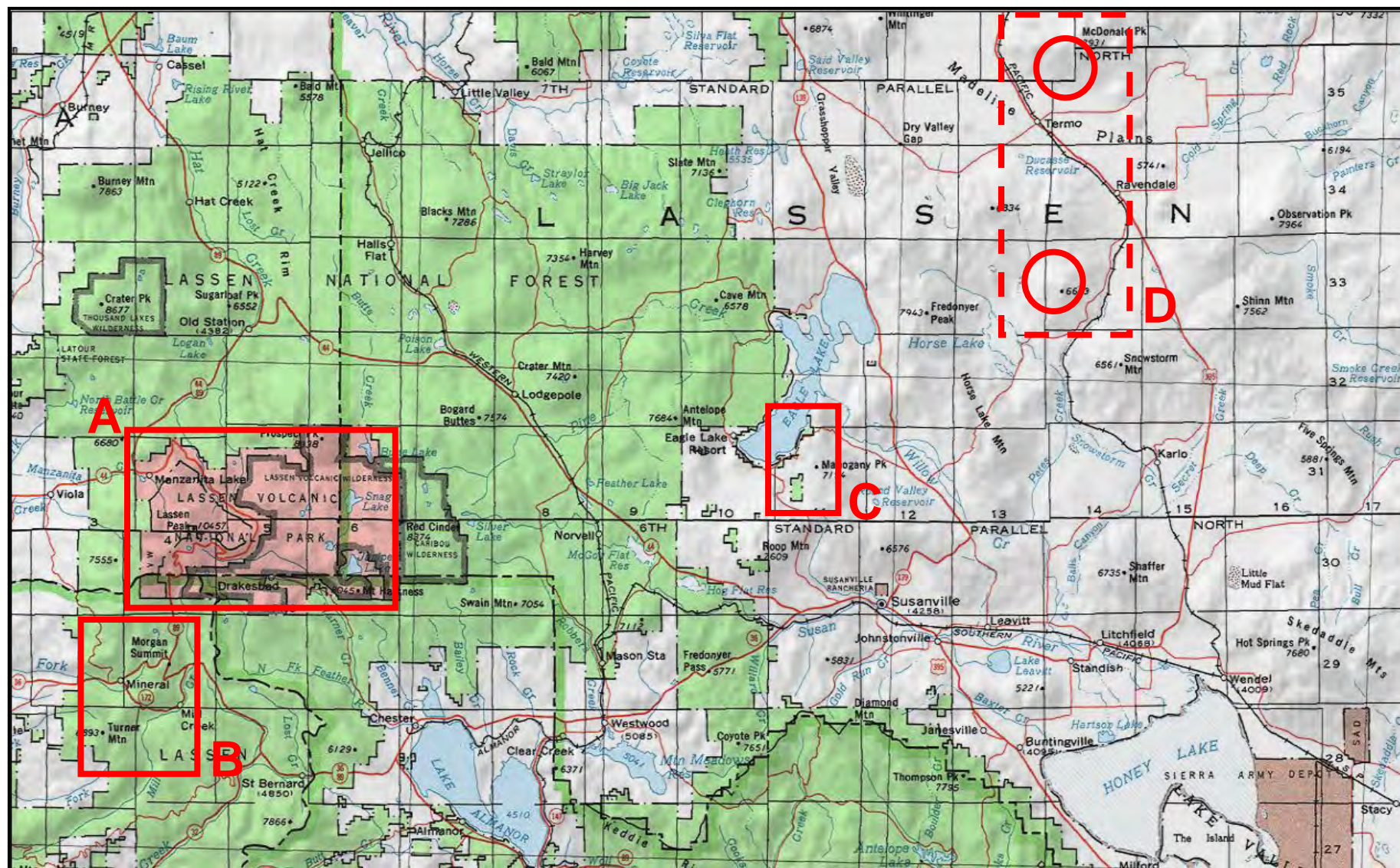
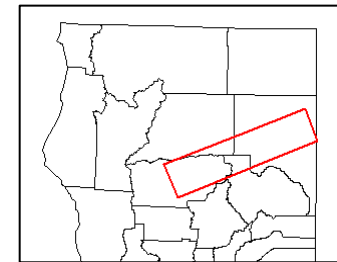


J. Perrine, P8040155

4 survey areas in summer 2009 (Aug 4 – Sept 4):

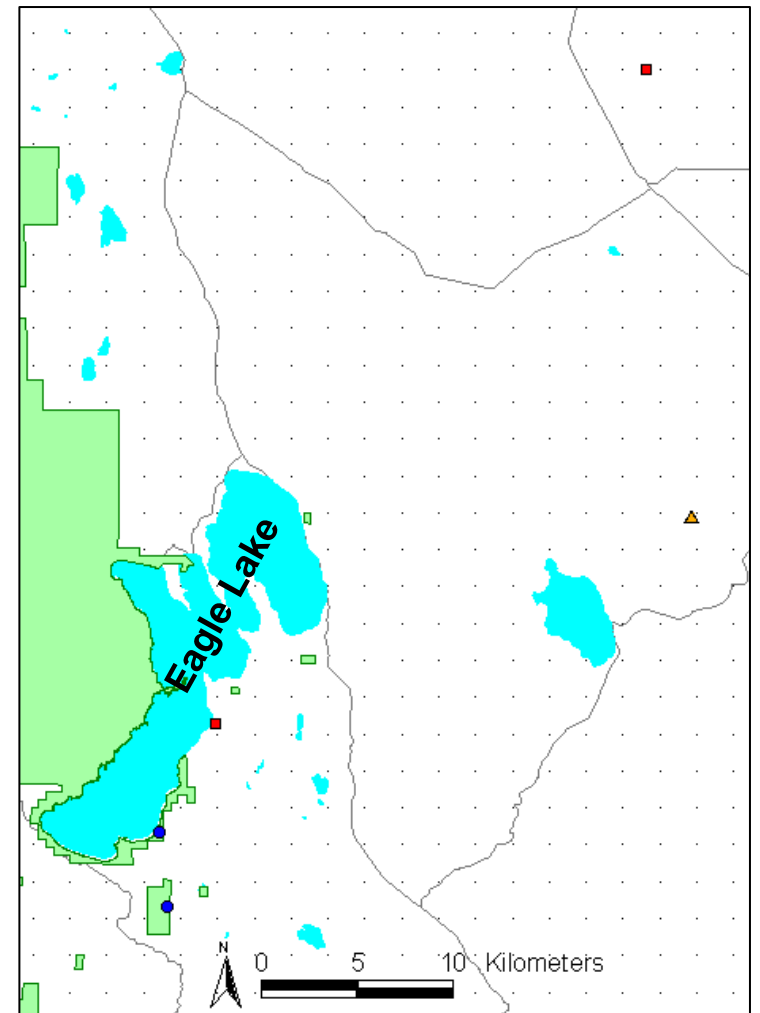
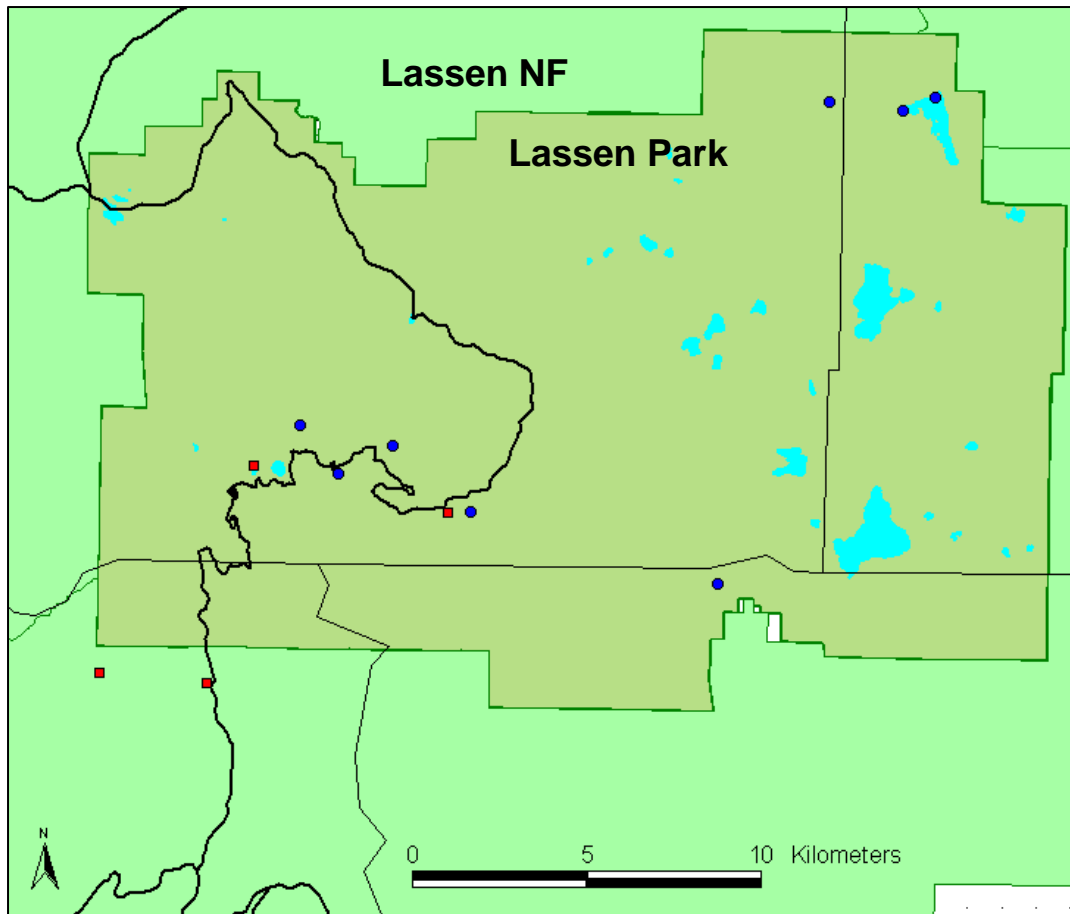
- A) Lassen Volcanic National Park
- B) Mineral area
- C) Eagle Lake, S shore
- D) Madeline Plains (2 sites)

(the next slide cuts out the empty space in between)

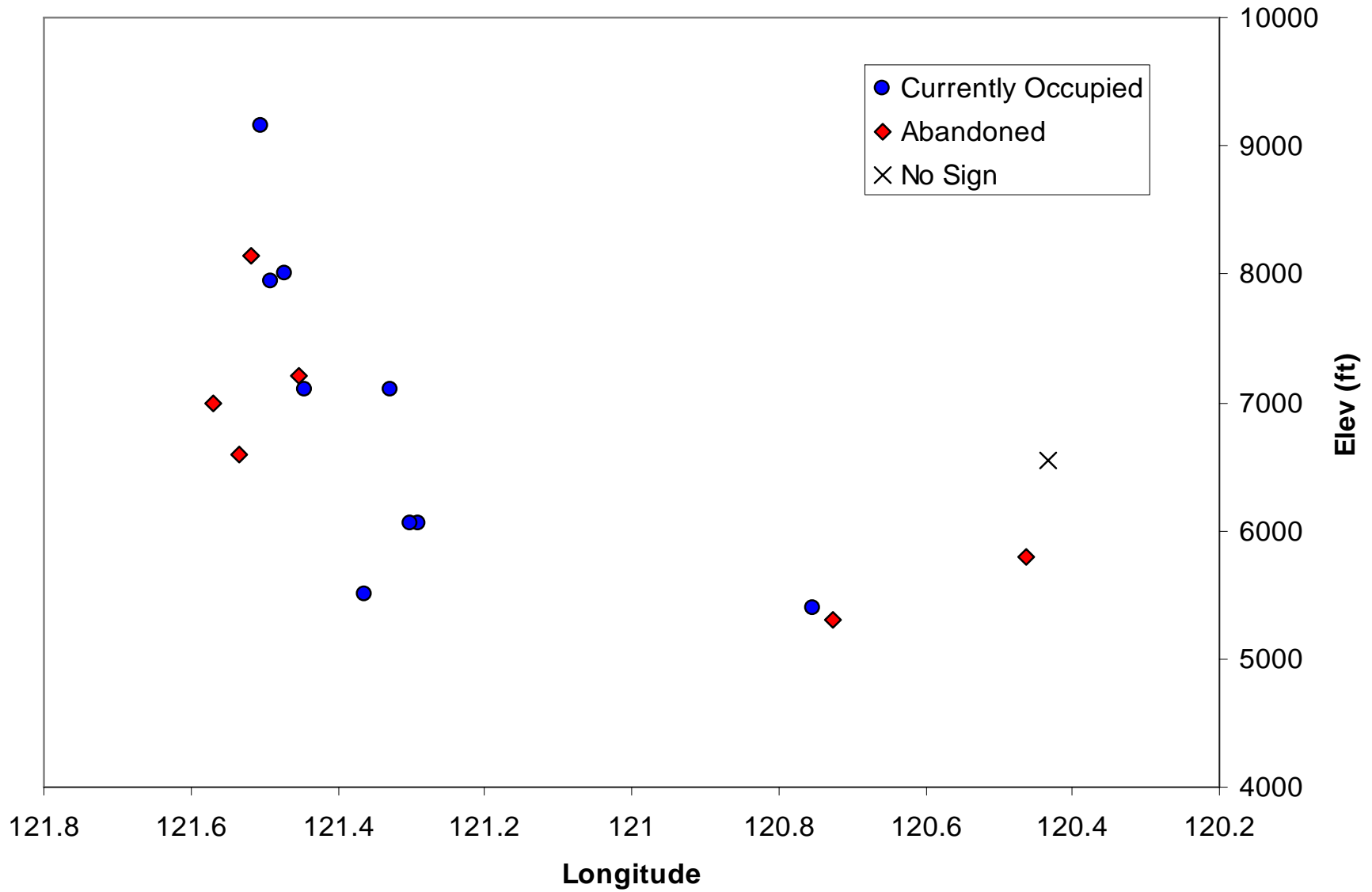


Of 17 Grinnell-era sites surveyed:

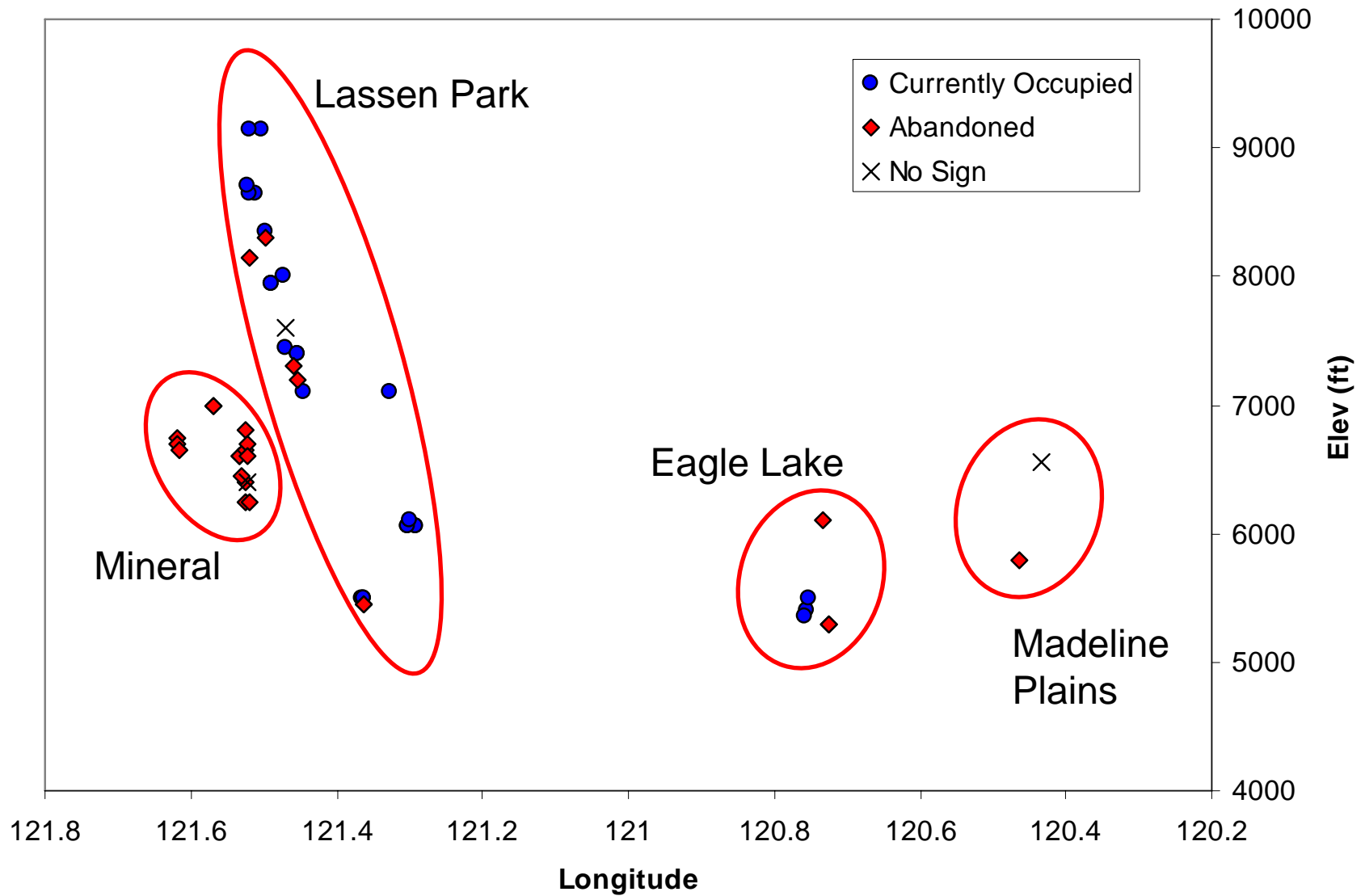
Currently Occupied: 10 (blue circles)
Abandoned: 6 (red squares)
No pika sign: 1 (orange triangles)



Current status of Grinnell-era pika detection sites in Lassen Transect (plotted by Longitude and Elev_ft)

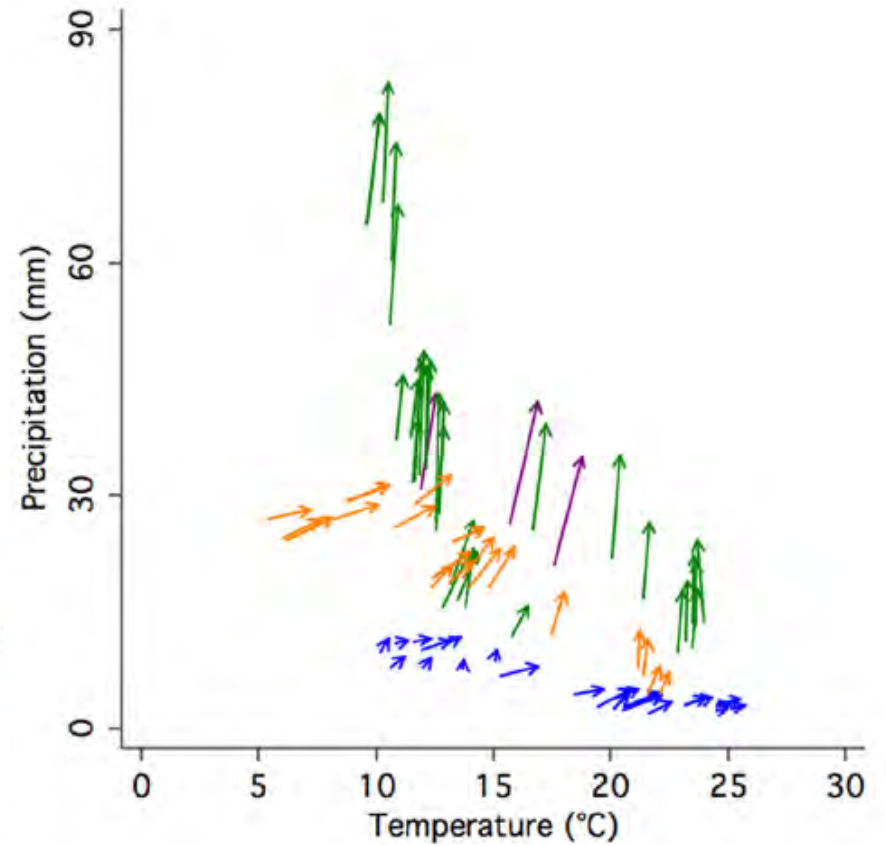
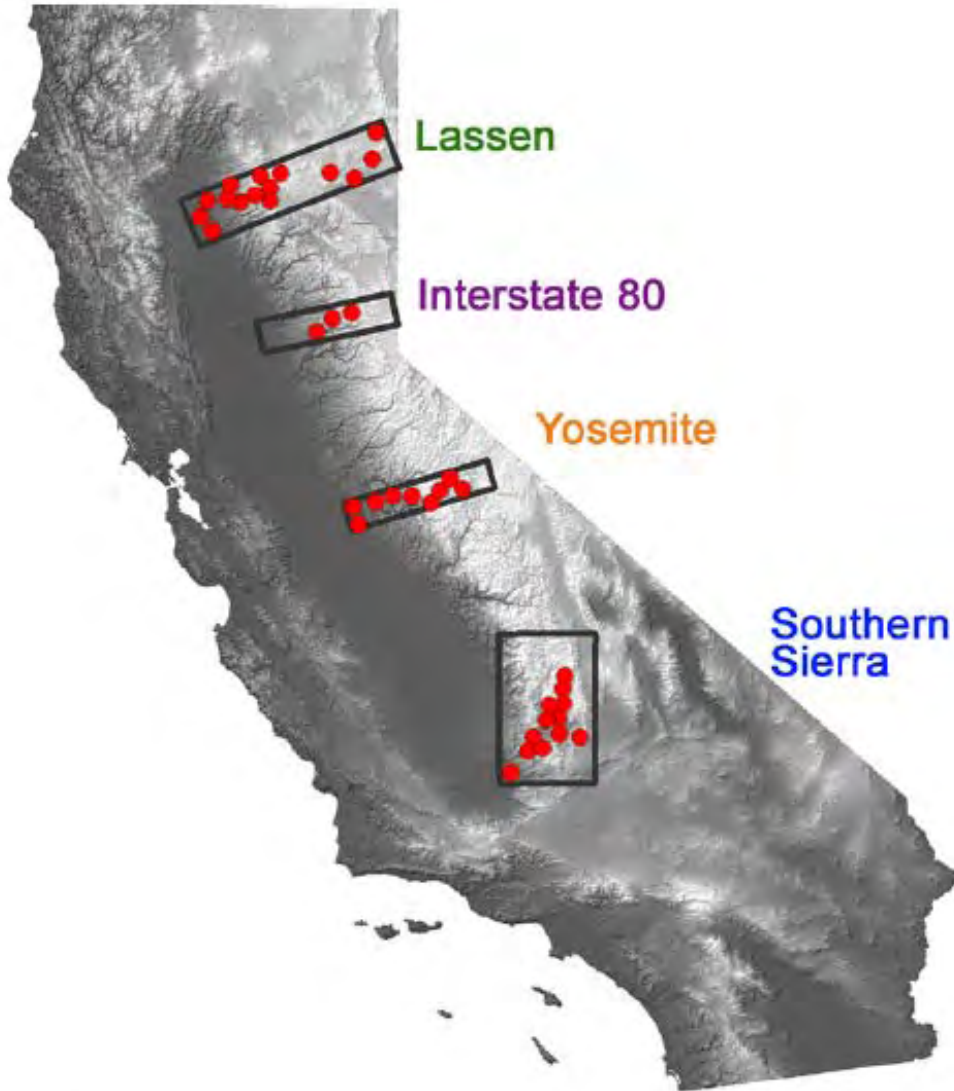


Current status, all sites surveyed (n = 45)



How has climate changed since Grinnell?

Tingley et al. 2009 PNAS



(Bird breeding season)