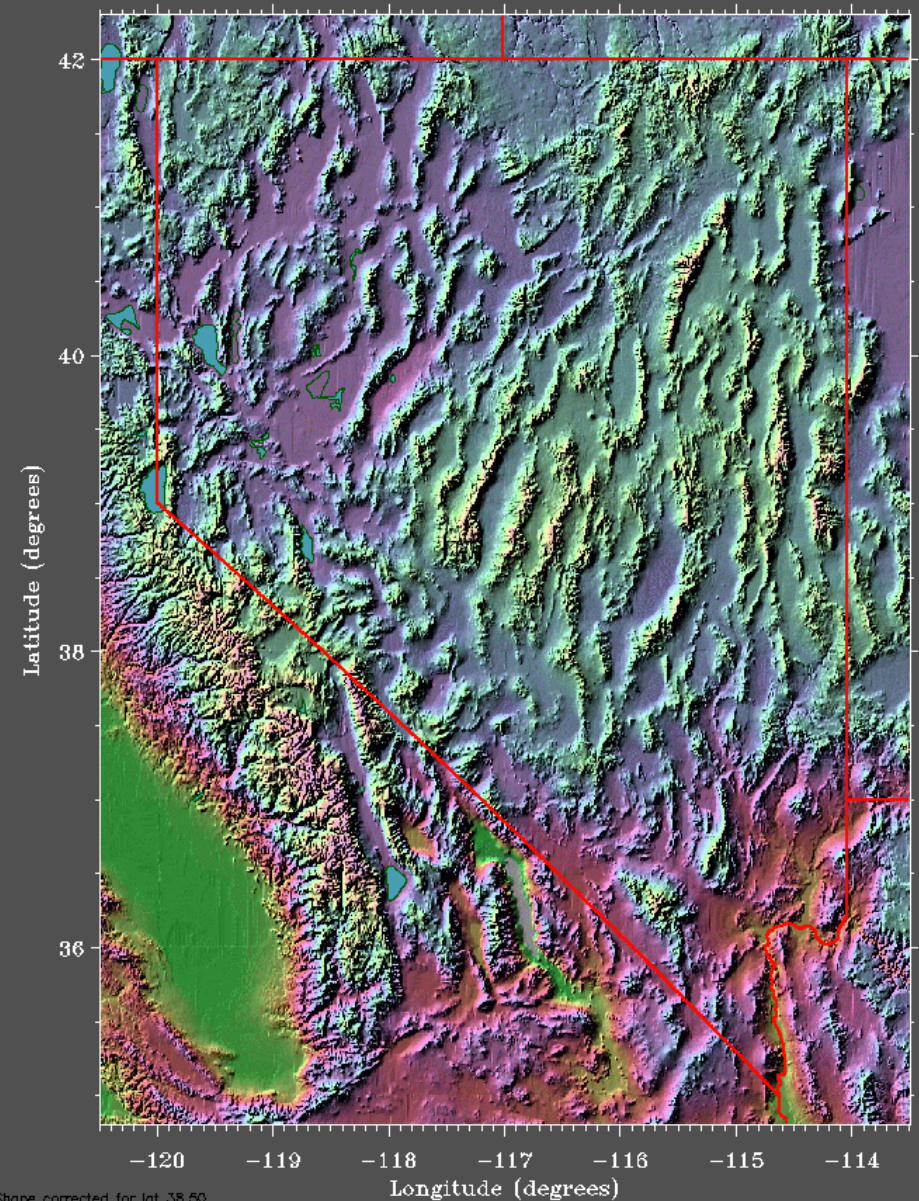


Discussion # 3 Great Basin

Points:

1. Disjunct, isolated ranges
2. Habitat within ranges scattered (glacial history); less optimum talus
3. Basins inhospitable to cross
4. Continental climates: extremes in temp, but not all dry
5. Island biogeography well known, e.g. Snake Range absences: bear, racoon, pika
6. Land-use history/current use
7. Exploration history/current knowledge



Talus: origin and thermal relations

Rockslide \neq Talus (Pika prefer talus)

Talus: Periglacial origin; Clast size; Sorting & lack of fines;
Thermal relationships different from rockslide or eroding slopes



Sorted circles



Nets & stripes

Jan 29, 2011
Mono Basin (SN)



Bodie Hills



DRY

Pine Nut Mts



Excelsior Mts





Snake Range

WET



Jarbidge Mts



Many GB ranges receive considerable precipitation, including summer rain, and experience cool temps summer & winter even to low elevations

Of these, Snake & Jarbidge, however, are without pikas...