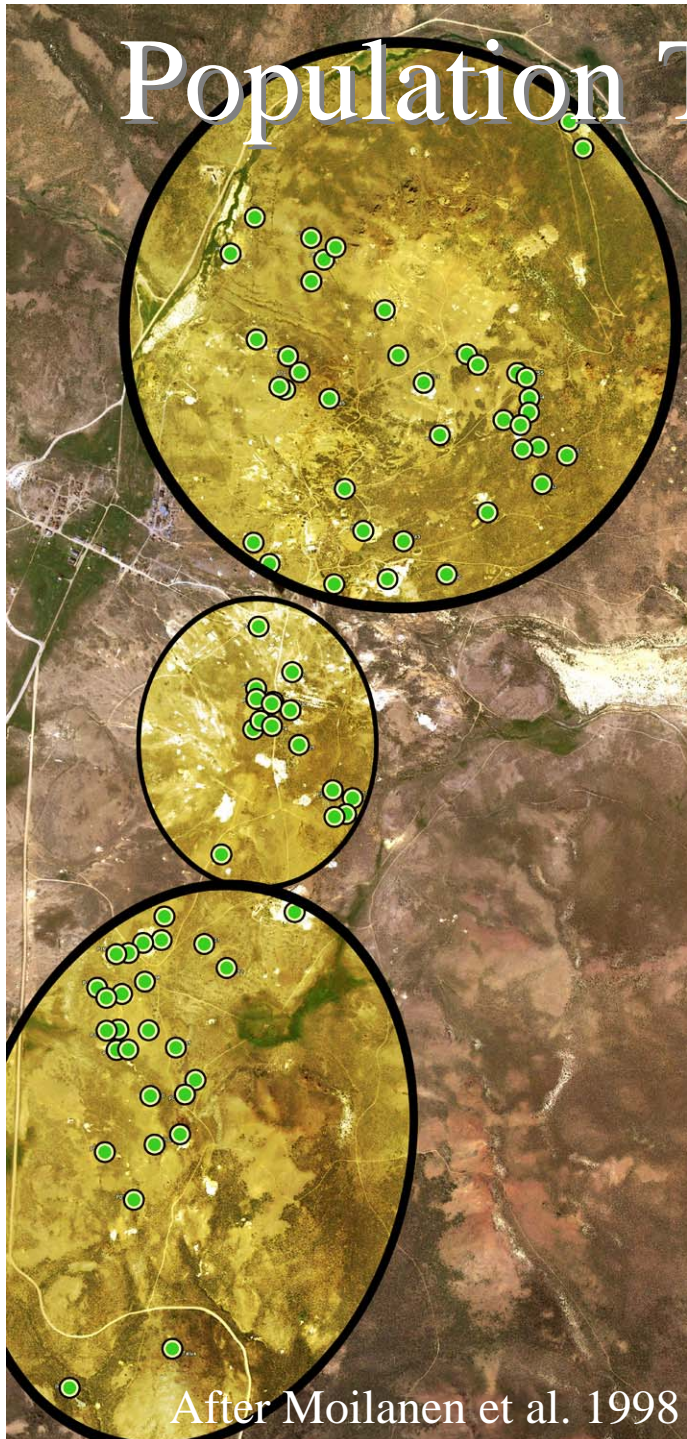
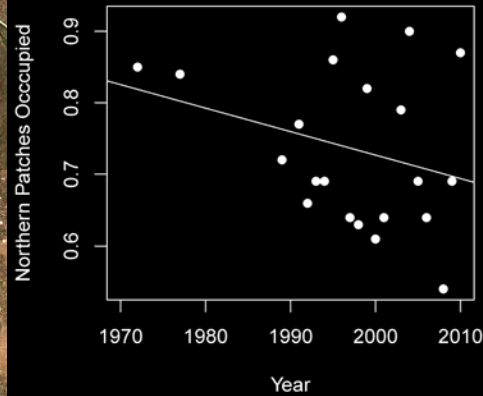


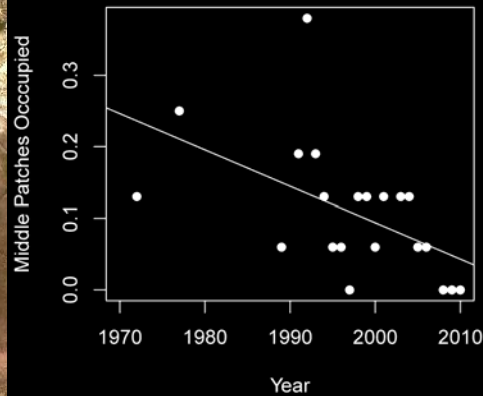
Population Trend by Patch Network



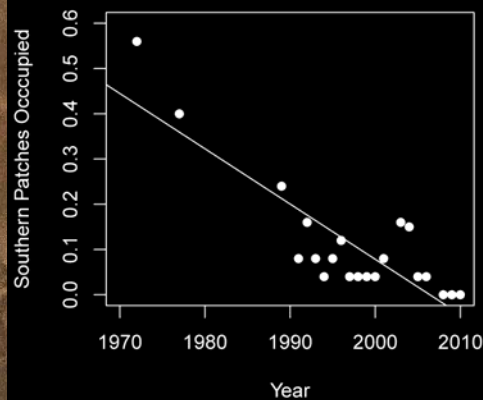
After Moilanen et al. 1998



Northern Patches:
Non-significant decline
($n = 39$, $P = 0.198$)
Without 2010 Significant
decline
($n = 39$, $P = 0.0692$)



Middle Patches:
Significant decline
($n = 16$, $P = 0.0133$)



Southern Patches:
Significant decline
($n = 25$, $P = 8.70 \times 10^{-7}$)