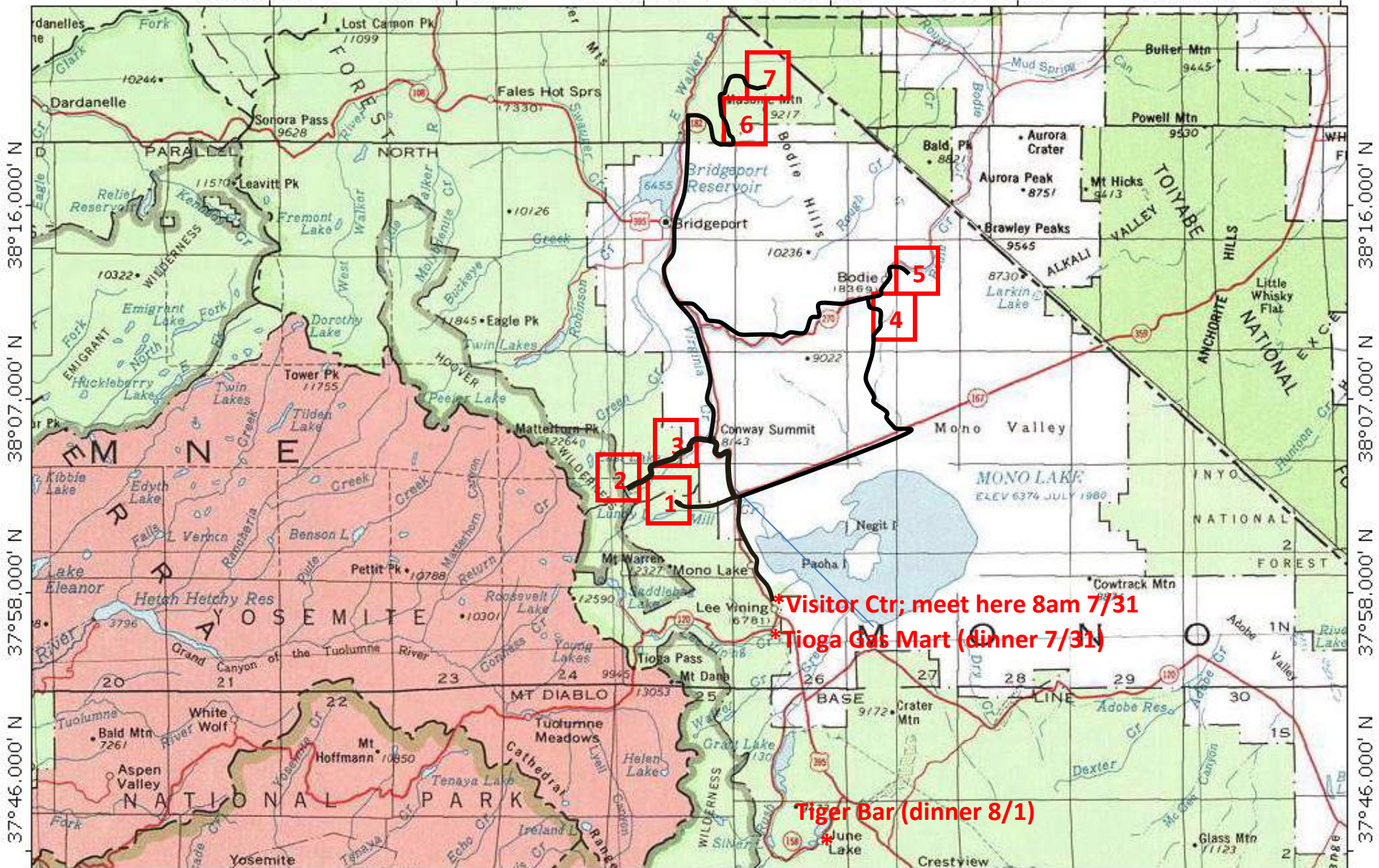


119°37.000' W 119°26.000' W 119°15.000' W 119°04.000' W 118°53.000' W WGS84 118°34.000' W



\*Visitor Ctr; meet here 8am 7/31

\*Tioga Gas Mart (dinner 7/31)

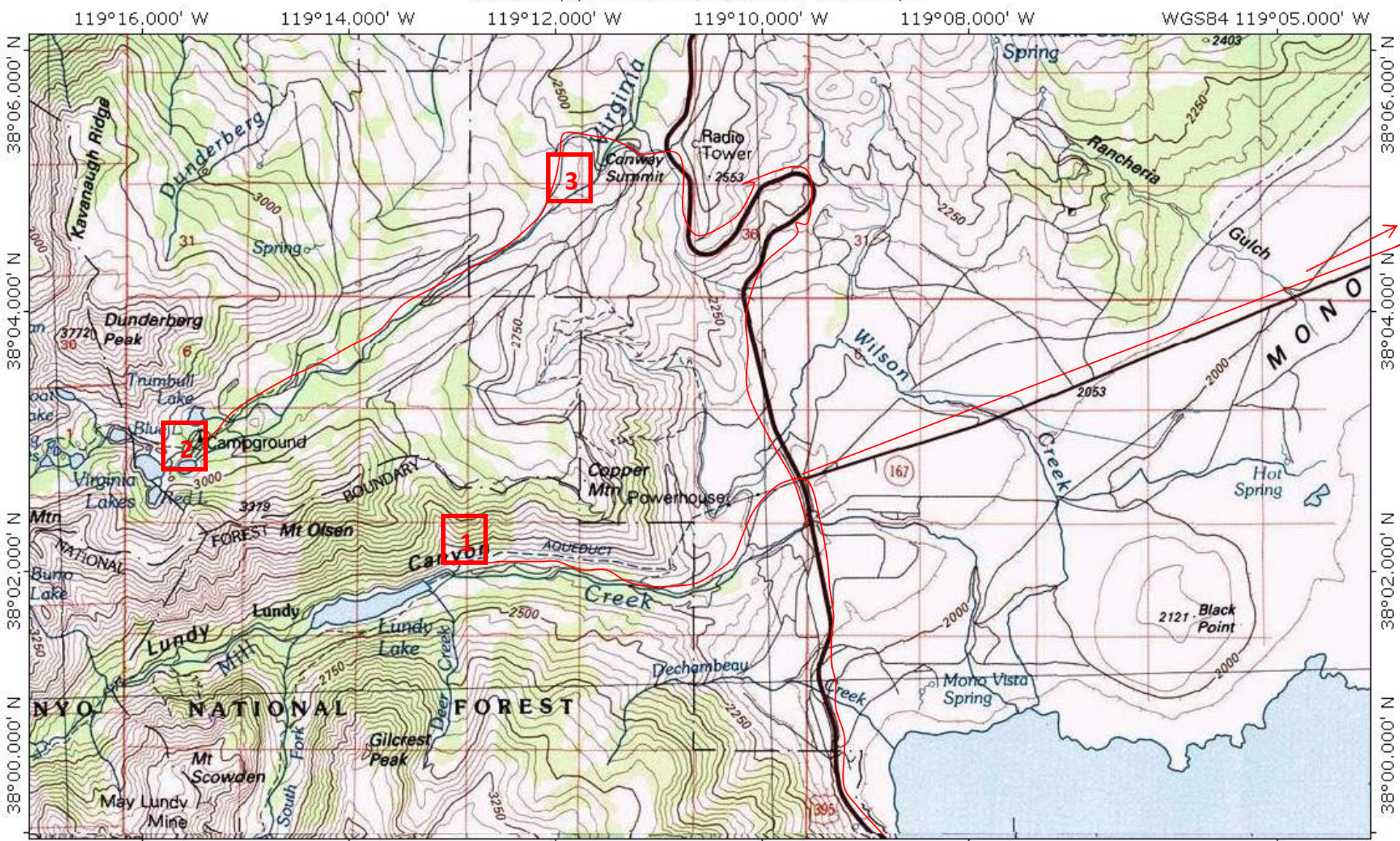
Tiger Bar (dinner 8/1)

TN MN 14 1/2°

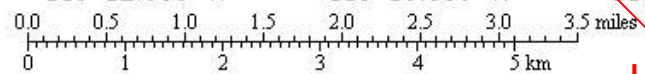
0 5 10 15 20 25 miles  
 0 5 10 15 20 25 30 35 40 km  
 Map created with TOPO!® ©2003 National Geographic (www.nationalgeographic.com/topo)

# Blow-up of Stops 1-3

TOPOI map printed on 07/05/11 from "Untitled.tpo"



TN MN  
14°

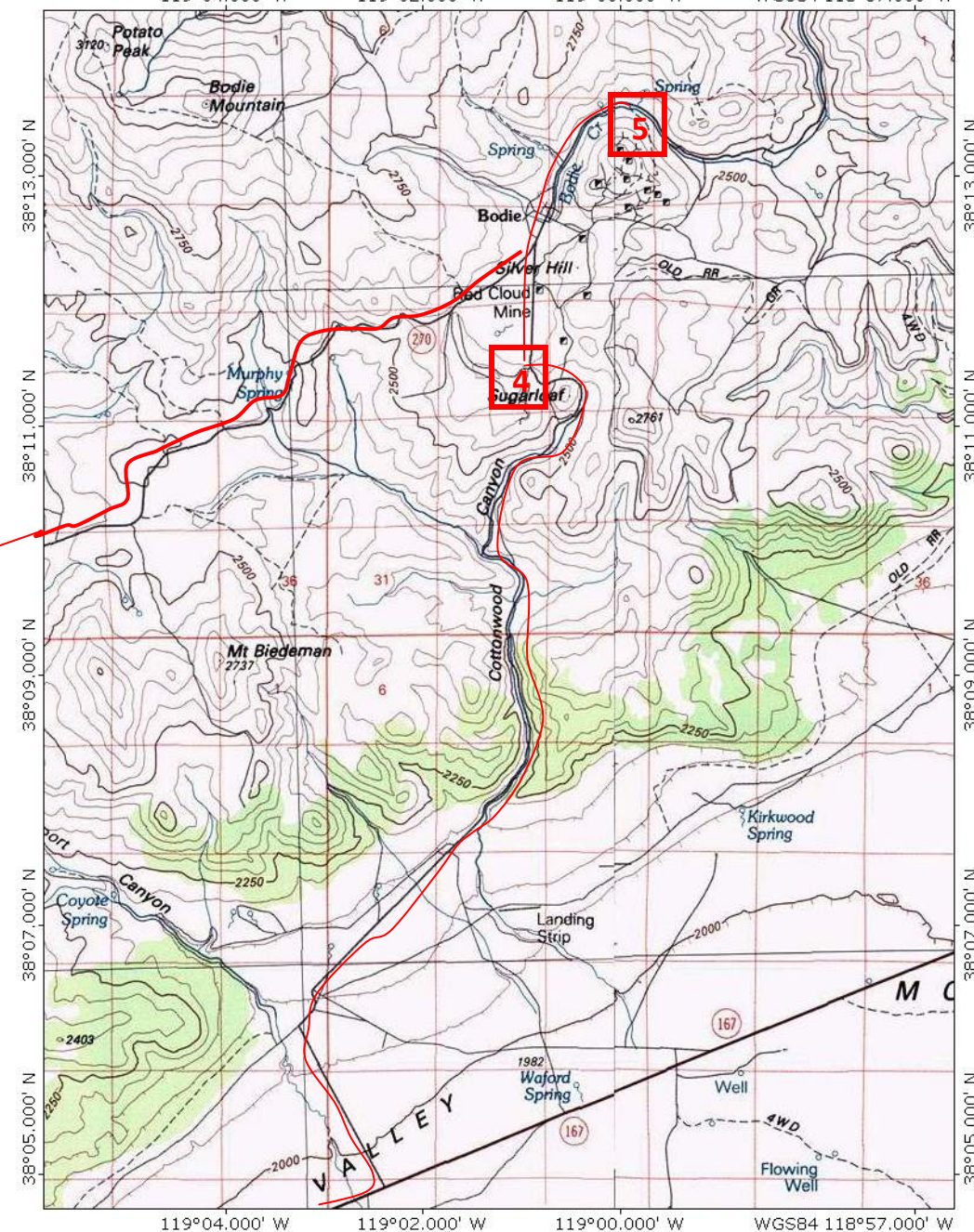


Map created with TOPOI® ©2003 National Geographic (www.nationalgeographic.com/topo)

Lee Vining, CA and Visitor Ctr

# Blow-up of Stops 4, 5

To US 395



Blow-up Stops 6-7. After Stop 7, retrace drive back to Bridgeport and then south on US 395 back to Lee Vining and dinner at Tioga Toomey's (Mobil Mart) on SR 120

