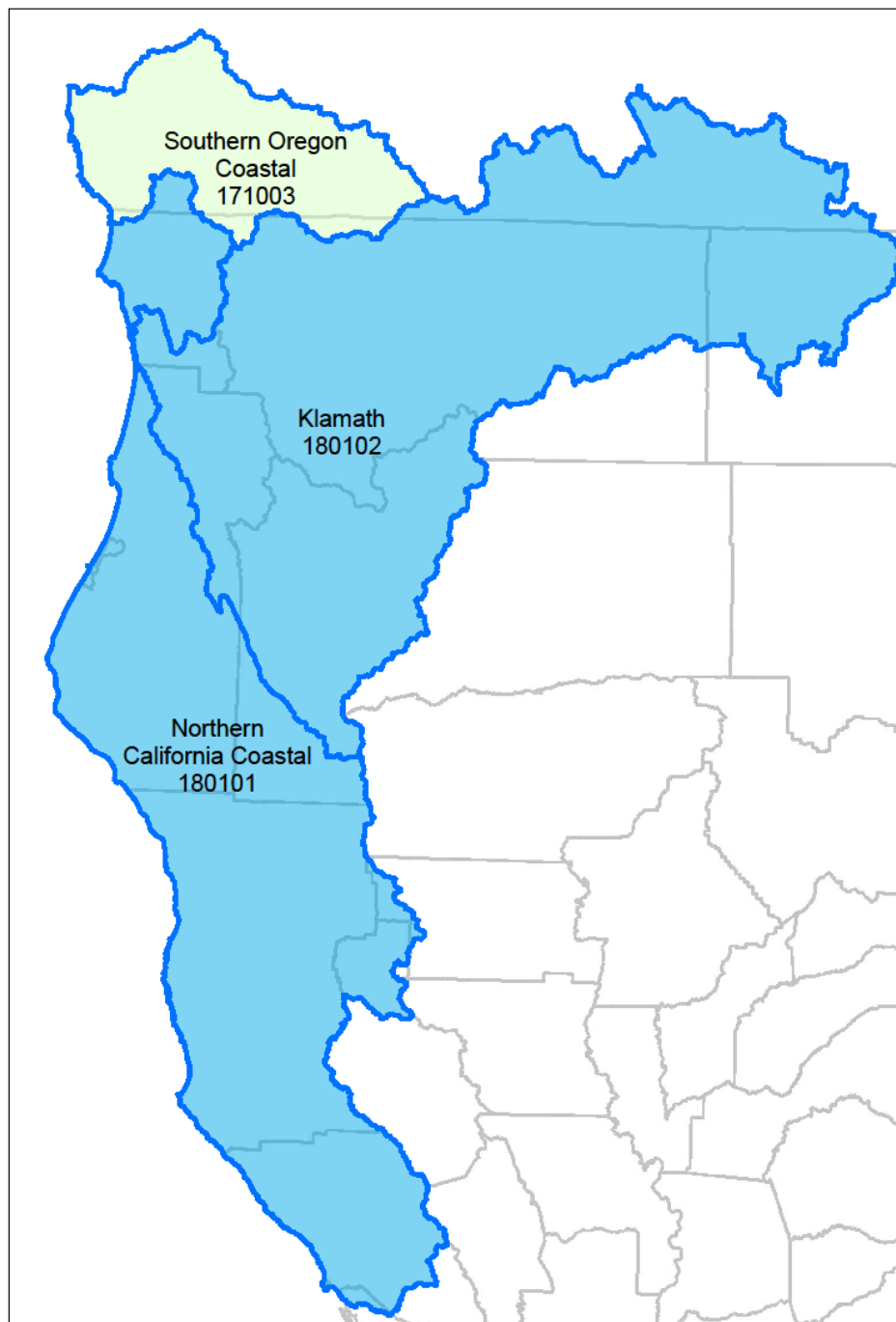


State Wildlife Action Plan 2015 Update

Klamath-Northern CA Coastal Hydrologic Unit Native Aquatic Species Assemblage

Mark Wheatley, Senior Environmental Scientist Specialist
Michelle Gilroy, District Fisheries Biologist
Steve Cannata, Fisheries Biologist

November 13, 2013





01/17/2008 10:17









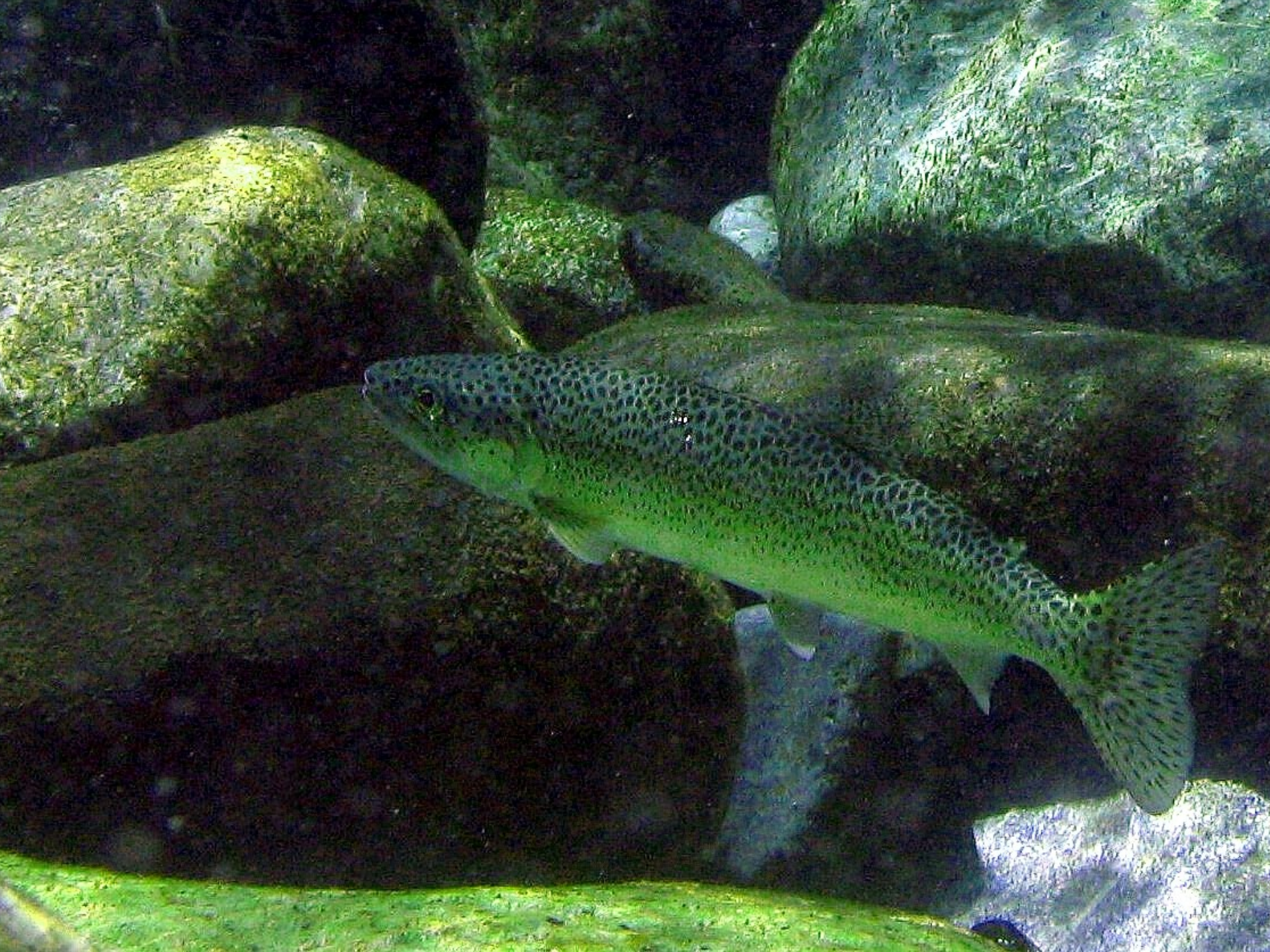




08/26/2010 13:03































12/06/2010 10:28

















Resource Impacts



■ **Water Diversion: During low-flow periods, no screening, no bypass**

■ **Pollutants: Sediment, petroleum products, fertilizers, killing agents**

■ **No BMPS/ No Riparian & Stream Protection Areas**

■ **Conversion/Fragmentation of lands**



Water Diversion

- Lower flows than expected for the water year





**Concrete, fertilizers
& other chemicals,
trash and debris
deposited in and
near streams**





**No BMPs on roads or other
construction features**



Large Scale Sediment Delivery



Lack of riparian protections



To ensure a sustainable future for our aquatic species and wildlife – and the enjoyment of wildlife by generations to come – there is a need for a collaborative approach to conservation.







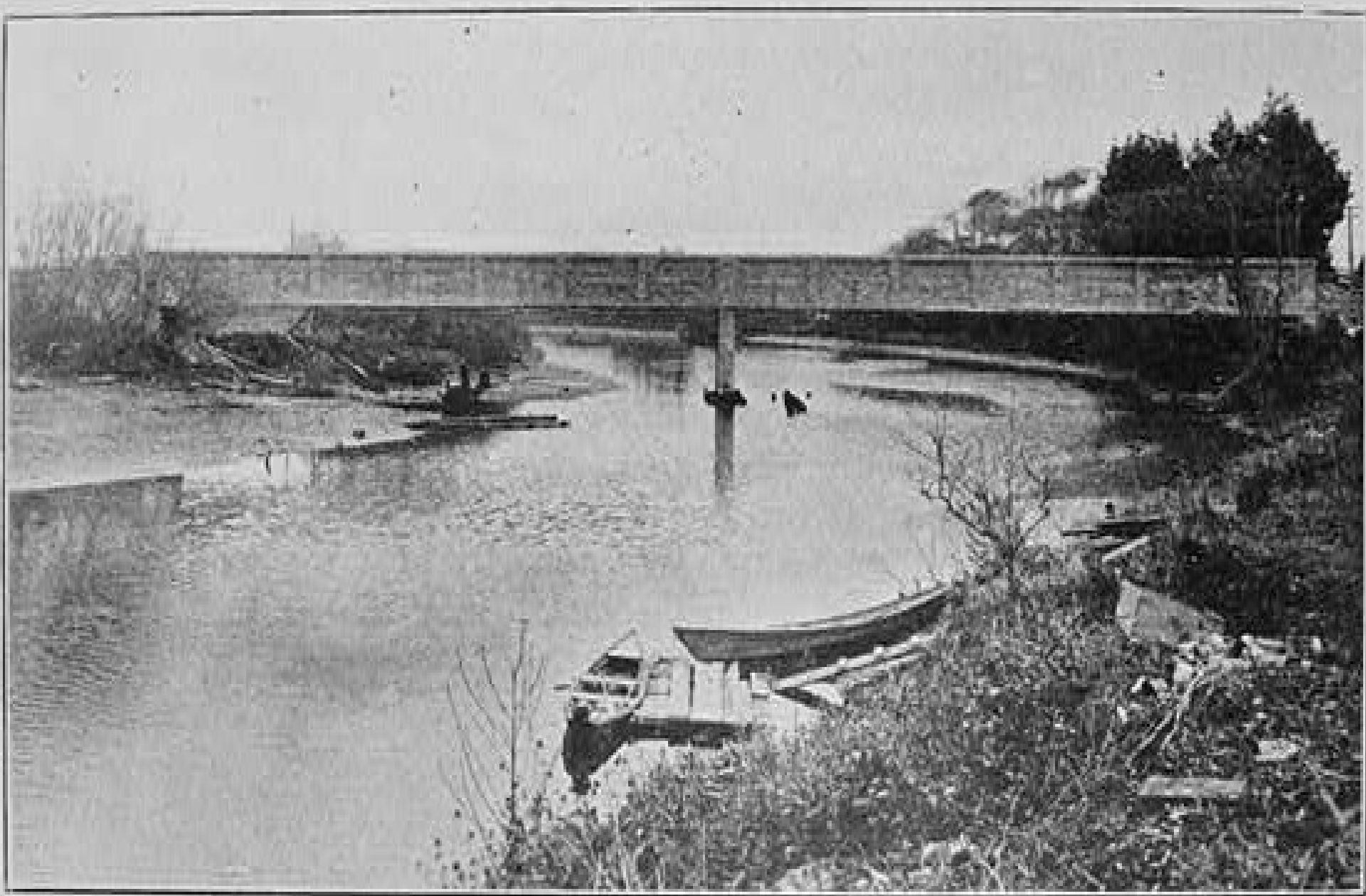




JACOBY CREEK/GANNON SLOUGH WILDLIFE AREA

Bayview Ranch





VIEW OF HIGHWAY BRIDGE OVER SALT RIVER, HUMBOLDT COUNTY, CALIFORNIA
H. J. Brunner, Engineer















RESTORING SALT RIVER TOGETHER

Thank You Jimmy



**Salt River
Restoration Project
Riverside Ranch Phase 1
MAY—DECEMBER 2013**

**END OF COUNTY ROAD 1 MILE
AHEAD, NO TURN-AROUND
NARROW ROAD AHEAD, EXPECT
OVERSIZE TRUCK TRAFFIC**









10/14/2013 15:04



