

246 examined - 164 length at migration figures.

From my examination of Upper Truckee migrants scales, the following can be tentatively asserted. Considering 70 mm as the dividing line between catchable + uncatchable, 18% migrated before catchable size, and 82% after catchable size. If the limit were raised to 80 mm, it would still leave over 80% migrating after reaching a catchable size. These % size figures are not accurate because no account was taken of length before formation of scale, in the calculations. There is also a possible 11% error in the percentages because it was impossible to tell when the migration took place on 21 of the samples examined, for other than mechanical\* reasons, i.e. disagreement between original reading and check up reading.

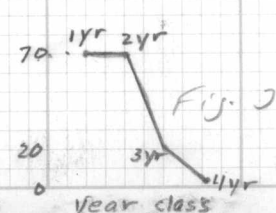
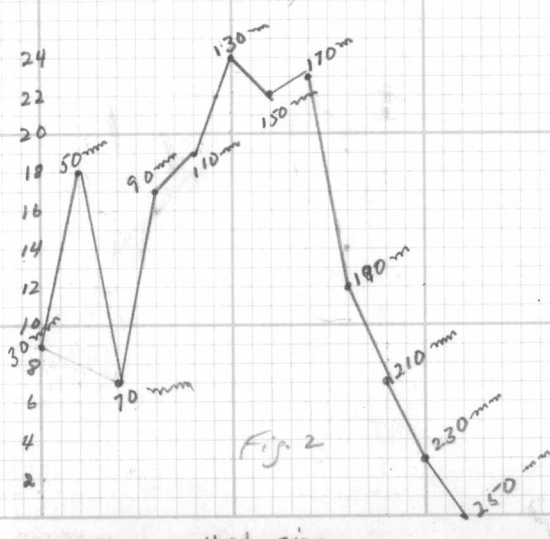
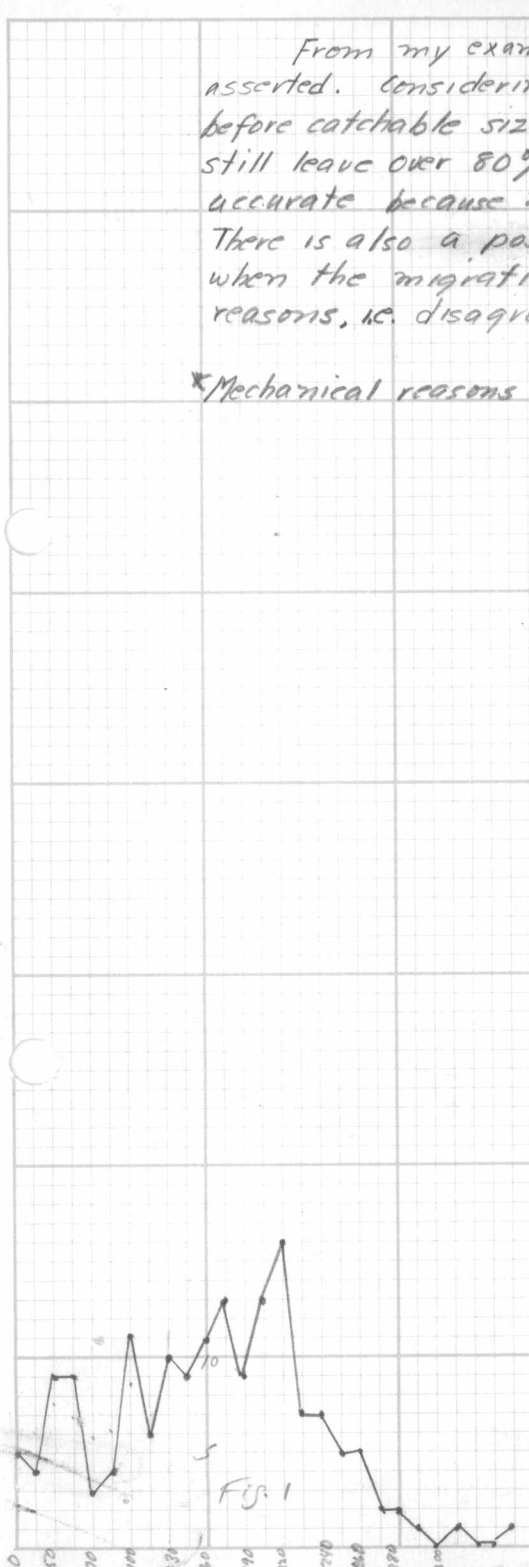
Length at scale formation about 35 mm  
BC.

\*Mechanical reasons include such things as worn scales, scales missing, etc.

This is not truly "smoothed"; it is made with double the class interval of Fig. 1. BC

Migrants at length  
110 mm & under: 52 = 32%  
over: 110 = 68%  
161

I.e., if all above 110 mm are catchable, only 32% migrate before reaching catchable size. BC



Dec. 1940?


Garth Murphy

EUGENE DITZGEN CO. NO. 375

Dear Mr Curtis

You see here the pictures I took. I was unable to procure anymore 117 film so operations ceased. Mr. Smith, instructor in photography says that the best one is 2x overexposed. (No 1)

Exposure on this roll of film

1. Emerald Bay - No. 91 - 100x, blank card over ~~diaphragm~~ reflecting mirror <sup>microscope</sup> & diaphragm closed. Light used was a large lamp in Dr. Days office. 

Of course the exposures will be different with different lights.

Exposure - 2.5 minutes Camera diaphragm wide open in all exposures

2. Same as above - Exposure 5 min
3. Upper Truckee no. 272 - 28x - Exposure 1 sec. Otherwise same as 1
4. Same as above, exposure ~~1~~ 1 minute
5. Upper Truckee no. 197 - 28x Exposure  $\frac{1}{2}$  sec. Otherwise same as 1
6. Same as 5 - Exposure  $\frac{1}{2}$  min.

These slides, along with my experimental stream mounts are in the box numbered No. 1. (wooden)

SM

FB

1. - No 91-100X - card  
diaphragm closed  
2.5 min.
2. Same - 5 min.
3. 272 Upper Truckee 28X  
1 sec - paper - d. closed  
(shutter clicked etc)
4. Same 1 min
5. 197 - 28X card - d. closed  
 $\frac{1}{2}$  sec.
6. 197 - Same  $\frac{1}{2}$  min.

No 1

