

South Humboldt Bay State Marine Recreational Management Area

Northern California - Established December, 2012



What is a California marine protected area (or "MPA")?

An MPA is a type of managed area primarily set aside to protect or conserve marine life and habitats in marine or estuarine waters. California's MPA Network consists of 124 areas with varying levels of protection, and 14 special closures, all designed to help safeguard the state's marine ecosystems. California marine recreational management areas focus on the protection, restriction, or enhancement of an area's recreational opportunities while preserving basic natural resources.

One goal for California's MPAs was to strategically place them near each other to form an interconnected network that would help to preserve the flow of life between marine ecosystems. Within that network each MPA has unique goals and regulations, and non-consumptive activities, permitted scientific research, monitoring, and educational pursuits may be allowed.

Why was this location chosen for a state marine recreational management area?

One of the goals for [South Humboldt Bay State Marine Recreational Management Area](#) is to protect part of California's second largest estuary, and one of the most significant eelgrass bed locations on the U.S. West Coast. The area also includes intertidal mudflats and coastal marsh. Topsmelt, perch, sculpins, crabs, and clams are plentiful here, and birds like the Pacific black brant and surf scoter are common. The recreational management area is an important nursery, foraging, and breeding area for marine and estuarine fishes including halibut, staghorn sculpin, leopard shark, Pacific herring, rockfish, and rays. Salmon transit the area during spawning migrations, and Dungeness crab use it as a nursery. More than 200 bird species regularly feed, rest, or nest at South Humboldt Bay State Marine Recreational Management Area.

Placing a state marine recreational management area here provides moderate levels of protection for local marine species and the habitats they use.



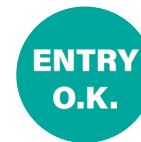
Report poachers and polluters
Call CalTIP: 1 (888) 334-2258

or text 847411 - begin message with "Caltip" followed by the details.



Quick Facts: South Humboldt Bay State Marine Recreational Management Area

- **Size:** 0.81 square miles
- **Habitat composition:**
 - Estuary: 0.79 square miles
 - Eelgrass: 0.34 square miles
 - Coastal marsh: 0.46 square miles



Non-Consumptive Activities

Waterfowl Hunting
See Hunting Regulations

No Fishing

No Collecting

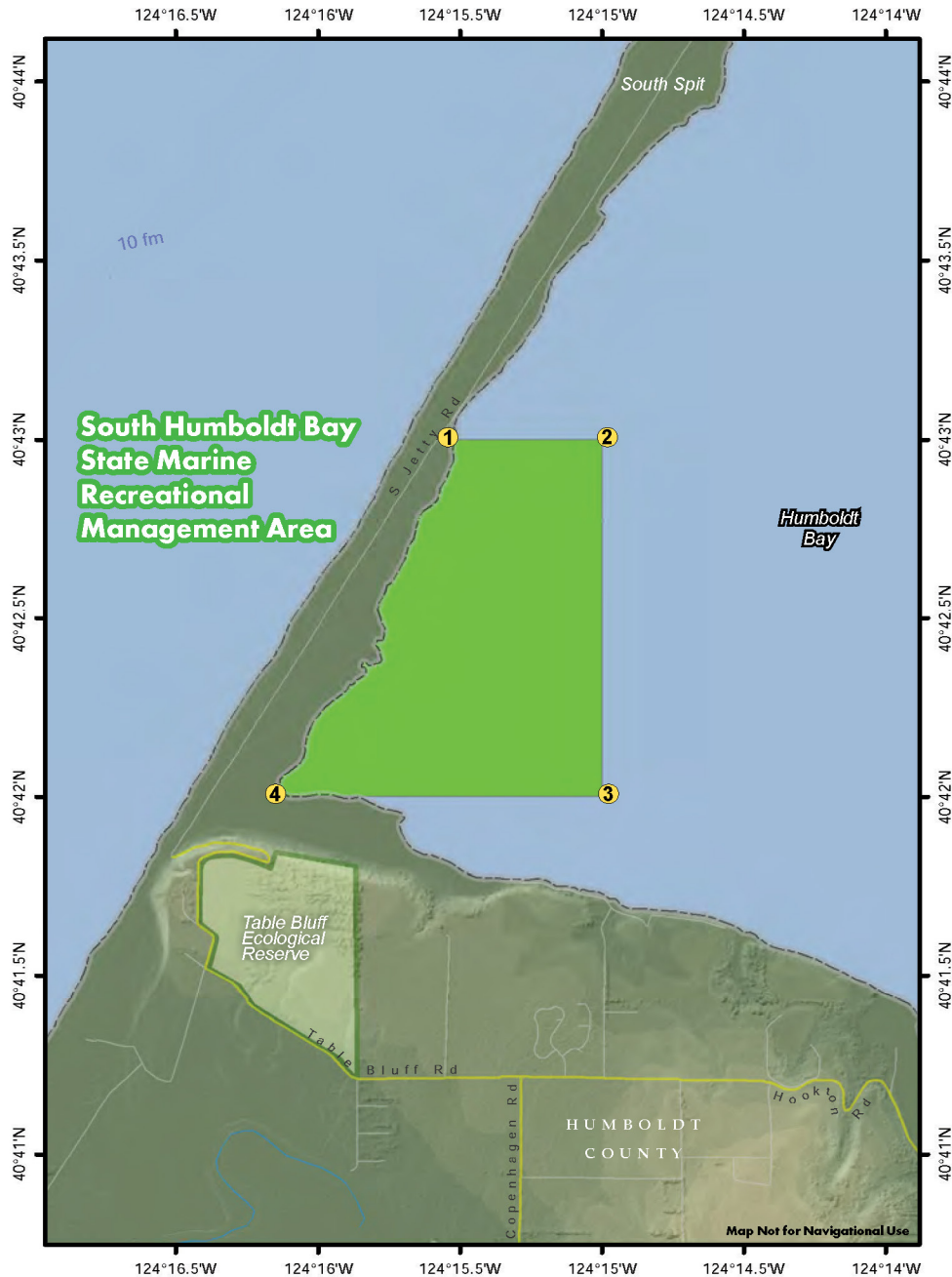
Further Information:

- MPA Website: www.wildlife.ca.gov/MPAs
- MPA and Sportfishing Interactive Map: www.wildlife.ca.gov/OceanSportfishMap
- Email: AskMarine@wildlife.ca.gov

Photos - Upper: Aerial view of South Humboldt Bay State Marine Recreational Management Area, photo © Kip Evans **Lower right:** Striped shore crab in the recreational management area, photo © Michael Kauffmann, CC BY-ND 2.0 **Lower left:** Kayaker views a flock of birds at the recreational management area, photo © Andrea Pickert

South Humboldt Bay State Marine Recreational Management Area

Northern California - Humboldt County



South Humboldt Bay State Marine Recreational Management Area Boundary and Regulations from California Code of Regulations Title 14, Section 632

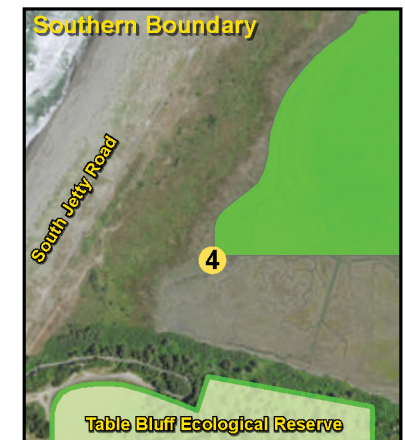
Boundary:

This area is bounded by the mean high tide line and straight lines connecting the following points in the order listed:

- 40° 43.000' N. lat. 124° 15.527' W. long. ①;
- 40° 43.000' N. lat. 124° 15.000' W. long. ②;
- 40° 42.000' N. lat. 124° 15.000' W. long. ③; and
- 40° 42.000' N. lat. 124° 16.141' W. long. ④

Permitted/Prohibited Uses:

1. Waterfowl may be taken in accordance with the general waterfowl regulations (Sections 502, 550, 551, and 552).
2. Take of all living, geological, or cultural marine resources is prohibited except:
 - The following federally recognized tribe is exempt from the area and take regulations for South Humboldt Bay State Marine Recreational Management Area and shall comply with all other existing regulations and statutes: Wiyot Tribe.



Take may be authorized for research, restoration, and monitoring purposes under a scientific collecting permit. See California Code of Regulations Title 14, Section 632(a).

The information in this document does not replace the official regulatory language found in the California Code of Regulations Title 14, Section 632. View these regulations online at

www.wildlife.ca.gov/CCR-T14-MPAs.