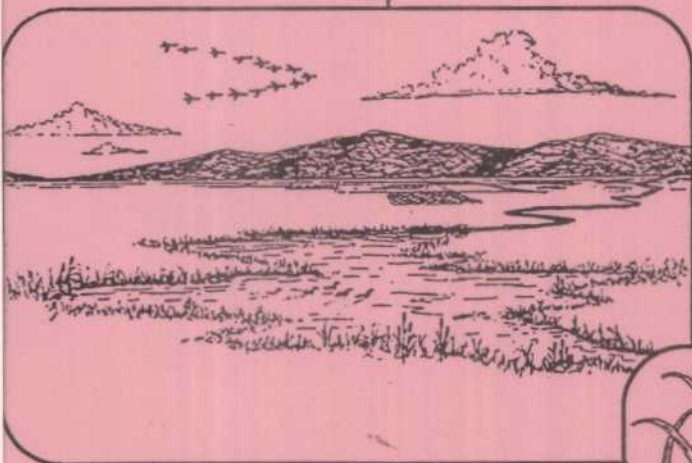
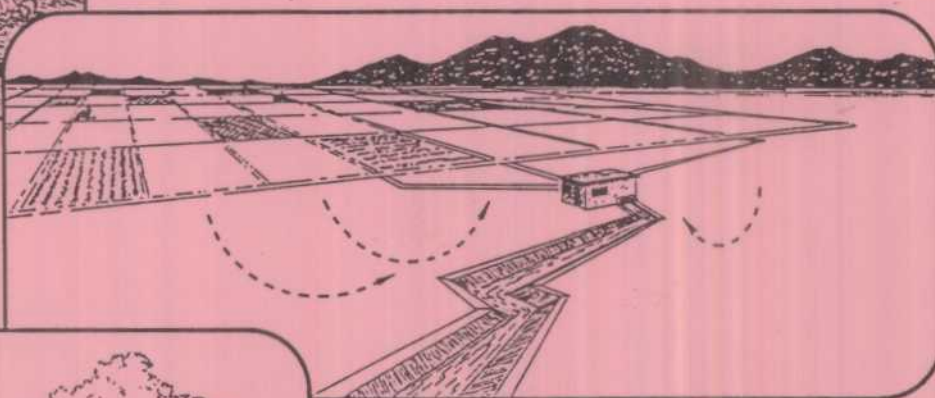
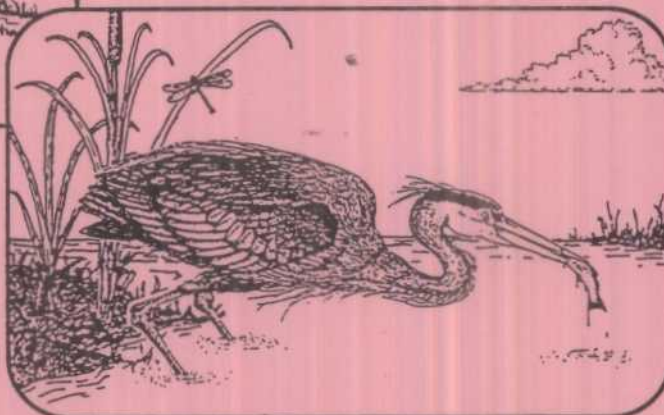


# Physical, Chemical, and Biological Data for Detailed Study of Irrigation Drainage in the Salton Sea Area, California, 1988-90



U.S. Geological Survey  
U.S. Fish and Wildlife Service  
U.S. Bureau of Reclamation  
U.S. Bureau of Indian Affairs  
and in cooperation with  
California Regional Water Quality Control Board,  
Colorado River Basin Region



U.S. Geological Survey  
Open File Report 93-83

PHYSICAL, CHEMICAL, AND BIOLOGICAL DATA FOR DETAILED  
STUDY OF IRRIGATION DRAINAGE IN THE SALTON SEA AREA,  
CALIFORNIA, 1988-90

By Roy A. Schroeder<sup>1</sup>, Mick Rivera,<sup>2</sup> and others

<sup>1</sup>U.S. Geological Survey

<sup>2</sup>U.S. Fish and Wildlife Service

---

U.S. GEOLOGICAL SURVEY

Open-File Report 93-83

U.S. GEOLOGICAL SURVEY  
U.S. FISH AND WILDLIFE SERVICE  
U.S. BUREAU OF RECLAMATION  
U.S. BUREAU OF INDIAN AFFAIRS

and in cooperation with  
CALIFORNIA REGIONAL WATER QUALITY  
CONTROL BOARD--COLORADO RIVER BASIN REGION

7414-22

**U.S. DEPARTMENT OF THE INTERIOR**  
**BRUCE BABBITT, Secretary**



**U.S. GEOLOGICAL SURVEY**  
**Dallas L. Peck, Director**

Any use of trade, product, or firm names in this publication is for descriptive purposes only and does not imply endorsement by the U.S. Government.

---

For sale by the Books and  
Open-File Reports Section  
U.S. Geological Survey  
Federal Center, Box 25425  
Denver, CO 80225

For additional information write to:  
District Chief  
U.S. Geological Survey  
Federal Building, Room W-2233  
2800 Cottage Way  
Sacramento, CA 95825

## PREFACE

The following individuals (agency affiliations are at the time of this study) participated in the collection and analysis of samples, compilation of data, and preparation of this report.

Roy A. Schroeder, U.S. Geological Survey, San Diego, California, participated in most field operations for the geochemical aspects of the study, did the laboratory experiments for tables 17 and 18, and prepared that part of this report related to tables 1-18 done by the U.S. Geological Survey.

Mick Rivera, U.S. Fish and Wildlife Service, Carlsbad, California, participated in field operations for the biological aspects of the study and prepared that part of this report related to tables 19-24 done by the U.S. Fish and Wildlife Service.

Brenda J. Redfield, U.S. Geological Survey, San Diego, California, compiled and reformatted data tables received in various forms from other agencies, offices, and individuals and assisted in the data-table verification process.

Jill N. Densmore, U.S. Geological Survey, San Diego, California, collected surface-water and ground-water quality data that are presented in tables 2, 4, 5, and 10 and that also were used by her to prepare an M.S. thesis at San Diego State University.

Robert L. Michel, U.S. Geological Survey, Reston, Virginia, obtained the tritium data presented in tables 6 and 16 and included elsewhere with additional water-quality data in various other tables.

Daniel R. Norton, U.S. Geological Survey, Denver, Colorado, analyzed soils and soil extracts that provided the data presented in tables 11-15.

Daniel J. Audet, U.S. Fish and Wildlife Service, Carlsbad, California, was the co-principal investigator with the project chief (Steven L. Goodbred) for collection of the biological data presented in tables 22 and 23.

James G. Setmire, U.S. Geological Survey, San Diego, California, served as project chief for the U.S. Geological Survey's part of this study, collected sediment and water-quality data from the Alamo River delta presented in table 7 and figure 4, and had primary responsibility for preparation of that agency's contribution to the interpretive report.

Steven L. Goodbred, U.S. Fish and Wildlife Service, Carlsbad, California, was project chief for the U.S. Fish and Wildlife Service's part of this study and had primary responsibility for preparation of that agency's contribution to the interpretive report.

## CONTENTS

Preface	III
Abstract	1
Introduction	1
Irrigation and drainage systems in the Imperial Valley	2
Purpose and scope	2
Types and numbers of samples	3
Analytical laboratories and methods	3
Acknowledgments	6
Drainwater data	6
1988 synoptic sampling at 108 sites	7
1988-89 monthly monitoring at 15 sites	7
Surface-water data	10
Monthly monitoring at six locations	10
Historical tritium concentrations in the Colorado River	10
Alamo River delta sampling	10
Selenium redox speciation	11
Lithology and ground-water data	11
Lithology at three drilling sites	11
Ground-water quality	12
Soils and porewater data	12
Shallow soils	13
Cores	13
Tritium in shallow soils	13
Laboratory experimental data	13
Evaporations of irrigation water	13
Dilutions of seawater and Salton Sea water	14
Biological data	14
Background	14
Sampling sites	14
Sample collection and preservation	14
Chemical concentrations	15
References cited	15

## FIGURES

- 1-4. Maps showing:
  1. Location of study area 2
  2. Water-sampling sites in the study area 4
  3. Water- and sediment-sampling locations, and selenium concentration in surficial sediments, in the Alamo River delta 6
  4. Biological sampling sites in the study area 8
5. Graph showing historical increase in number of drainwater sumps installed in the Imperial Valley 10

## TABLES

1. Data from Imperial Valley drainwater samples collected by the California Regional Water Quality Control Board, June 24-July 10, 1986 18
2. Data from Imperial Valley drainwater samples collected by the U.S. Geological Survey, May 16-20, 1988 23
3. Comparison of data for drainwater samples collected at selected locations in the Imperial Valley by the U.S. Geological Survey in 1986 and 1988 32
4. Data from periodic sampling of drainwater at 15 Imperial Valley sites at fields, May 1988-August 1989
5. Data from periodic sampling of streams, East Highline Canal, and Trifolium Drain 1, August 1988-August 1989 54
6. Annual average tritium concentrations in the lower Colorado River at Imperial Dam, 1965-88 72
7. Depth-profile data along a transect between the mouth of the Alamo River and the Salton Sea, August 1988 72
8. Particle-size distribution in cores from the Imperial Valley 73
9. Lithologic description and perforated intervals for piezometers in the Imperial Valley 74
10. Data from lysimeters and piezometers at three sites in the Imperial Valley 75
11. Selenium and water-extractable sulfate, chloride, and selenium concentrations in soils from 15 fields 79
12. Arsenic, selenium, and boron, and water-extractable sulfate, chloride, and selenium concentrations in soils from 15 fields 87
13. Concentrations of selected constituents in near-surface soils from 15 fields 88
14. Arsenic and selenium, and water-extractable sulfate, chloride, and selenium concentrations in cores 93
15. Concentrations of selected elements in cores 94
16. Tritium concentration in soil moisture from eight fields in the Imperial Valley, August 1988 97
17. Analyses of untreated and acidified irrigation water from the East Highline Canal concentrated by evaporation in the laboratory 98
18. Analyses of undiluted and diluted (with deionized water) water samples from the Salton Sea and the Pacific Ocean 100
19. Biological sampling sites for the detailed study of the Salton Sea area 104
20. Biotic samples collected from sites in the study area 105
21. Chemicals analyzed for in biota in the detailed study of the Salton Sea area 106
22. Inorganic chemical analysis and moisture content for biotic samples collected during 1988-90 from the Salton Sea and associated drainwaters and rivers 107
23. Organic chemical analysis, moisture content, and lipid content for biotic samples collected during 1986-90 from the Salton Sea and associated drainwaters and rivers 137
24. Polycyclic aromatic hydrocarbon concentration, moisture content, and lipid content for single samples of crayfish and tilapia collected in the study area in 1987 179