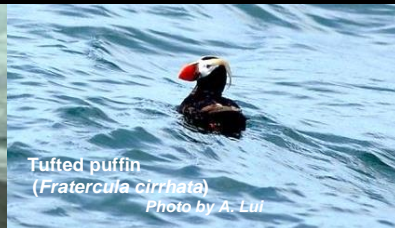


# Pyramid Point State Marine Conservation Area

Northern California Marine Protected Areas (MPAs), *Implemented December 2012*



Pyramid Point SMCA  
Photo by CDFW



Tufted puffin  
(*Fratercula cirrhata*)  
Photo by A. Lui



Flat abalone  
(*Haliotis walallensis*)  
Photo by R. Alvarez



Strawberry anemones  
(*Corynactis californica*)  
Photo by M. Winscher

## Site Overview

Photos are representative of the North Coast Region and may not be within this MPA.

## What is an MPA?

MPAs are a type of [marine managed area](#) (MMA) where marine or estuarine waters are set aside primarily to protect or conserve marine life and associated habitats. California has a coastal network of 124 protected areas designed to help increase the coherence and effectiveness of protecting the state's marine life, habitats, and ecosystems. The network includes three types of MPA: [state marine reserve](#) (SMR), [state marine conservation area](#) (SMCA), and [state marine park](#) (SMP); one MMA: [state marine recreational management area](#) (SMRMA); and [special closures](#). There are 119 MPAs, 5 MMAs and 15 special closures, each with unique boundaries and regulations in the network. Non-consumptive activities, restoration, and permitted scientific research are allowed.

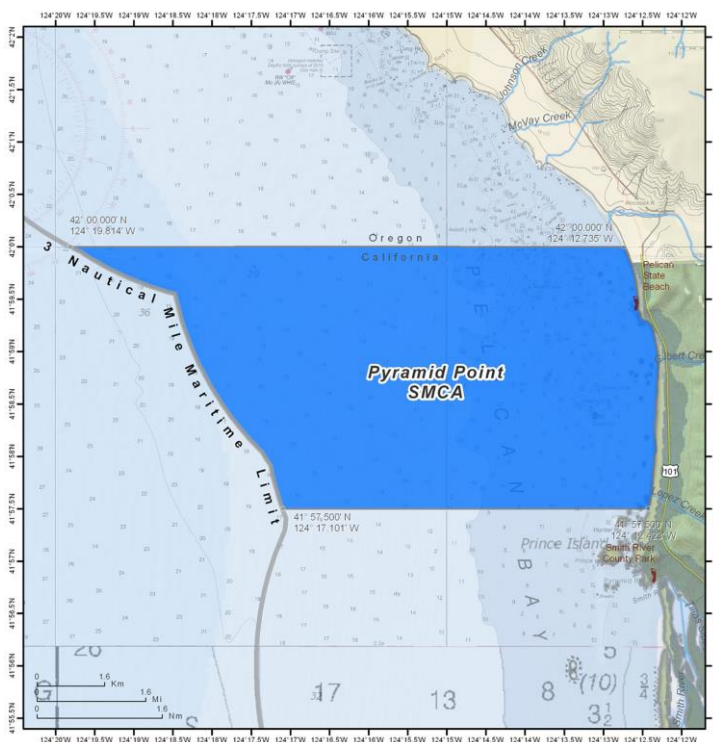
## What is an SMCA?

An **SMCA** is a type of MPA that protects resources by allowing for only specific types of recreational and/or commercial take to occur. (*Area restrictions are defined in Title 14, Section 632(a)(1)(C)*).

## Pyramid Point SMCA Overview

- **MPA size:** 13.99 square miles
- **Depth range:** 0 to 124 feet
- **Along-shore span (shoreline):** 2.9 miles

## Where is Pyramid Point SMCA?



## Pyramid Point SMCA Key Habitats

- **Beaches:** 2.97 miles
- **Sand (all depths):** 11.50 square miles
- **Rock (all depths):** 0.70 square miles
- **Unidentified (all depths):** 1.81 square miles

## Boundaries and Regulations

**Boundary:** This area is bounded by the mean high tide line and straight lines connecting the following points in the order listed except where noted:

- 42° 00.000' N. lat. 124° 12.735' W. long.;
- 42° 00.000' N. lat. 124° 19.814' W. long.;
- thence southward along the three nautical mile offshore boundary to
- 41° 57.500' N. lat. 124° 17.101' W. long.; and
- 41° 57.500' N. lat. 124° 12.423' W. long.

**Only the following take is allowed in Pyramid Point SMCA:**

1. The recreational take of [surf smelt](#) by dip net or Hawaiian type throw net is allowed.
2. The following federally recognized tribe is exempt from the area and take regulations for Pyramid Point State Marine Conservation Area (subsection 632(b)(1)) and shall comply with all other existing regulations and statutes: Tolowa Dee-ni' Nation.

# Pyramid Point State Marine Conservation Area

## How and Why Pyramid Point was Chosen for an SMCA

MPAs were designed through a collaborative, regional public process by a cross-interest regional stakeholder group (RSG). Using scientific criteria, public input and local resource knowledge the RSG developed MPA proposals. RSG proposals included site specific rationale (why the site should be an MPA-*included below*), the classification (type of MPA), boundaries, and regulations. Final MPA proposals were sent to the California Fish and Game Commission (Commission) for their adoption process. Pyramid Point SMCA was adopted by the Commission in 2012.

### **North Coast RSG Identified Rationale for Pyramid Point SMCA:**

SMCA designed to maintain a moderate-high level of protection and capture beach, rocky shore and offshore rocks, and 0-30 soft replicates. Large offshore rocks support Aleutian Canada geese and breeding seabirds, including some of California's only breeding fork-tailed storm petrels and tufted puffin, a large rookery of great blue heron, snowy egret (farthest north in the western U.S.) and black-crowned night-heron. Contains shallow rocky reef important for nearshore rockfish and provides 14 mi<sup>2</sup> protected forage habitat for pinnipeds and cetaceans. Designed to maintain a moderate-high preliminary level of protection.

## Species Likely to Benefit from the Establishment of MPAs in California

Species likely to benefit from establishing an MPA are those, whose home range, behavior, reproduction, exploitation rate or population status indicates that they may benefit from spatial management. This includes species that are directly targeted by fisheries, those which are caught incidental to fishing for the target species (bycatch) and which cannot be returned to the water with a high rate of survival, and those which may be indirectly impacted through ecological changes within MPAs.

For a list of species likely to benefit from MPAs statewide: [www.dfg.ca.gov/marine/mpa/species.asp](http://www.dfg.ca.gov/marine/mpa/species.asp)

For a list of species likely to benefit from north coast MPAs: [www.dfg.ca.gov/marine/pdfs/binders\\_nc/b2\\_3.pdf](http://www.dfg.ca.gov/marine/pdfs/binders_nc/b2_3.pdf)

## North Coast Regional Resources

California MPA Overview:

[www.wildlife.ca.gov/MPAs/Network-Overview](http://www.wildlife.ca.gov/MPAs/Network-Overview)

North Coast Regional Goals and Objectives:

[www.dfg.ca.gov/mlpa/pdfs/binders\\_nc/b1\\_29.pdf](http://www.dfg.ca.gov/mlpa/pdfs/binders_nc/b1_29.pdf)

California MLPA North Coast Study Region Description of MPAs:

[www.dfg.ca.gov/marine/pdfs/northcoastproposals/rec\\_description\\_eca.pdf](http://www.dfg.ca.gov/marine/pdfs/northcoastproposals/rec_description_eca.pdf)

Methods Used to Evaluate MPAs in the North Coast:

[www.dfg.ca.gov/marine/pdfs/northcoastproposals/evaluationmethods.pdf](http://www.dfg.ca.gov/marine/pdfs/northcoastproposals/evaluationmethods.pdf)

MPA Research and Monitoring Activities:

[www.wildlife.ca.gov/MPAs/Research-And-Monitoring](http://www.wildlife.ca.gov/MPAs/Research-And-Monitoring)

Regional MPA Statistics:

[www.wildlife.ca.gov/MPAs/Statistics](http://www.wildlife.ca.gov/MPAs/Statistics)

Regional Planning History:

[www.wildlife.ca.gov/Conservation/Marine/MPAs/Planning-Process](http://www.wildlife.ca.gov/Conservation/Marine/MPAs/Planning-Process)

## California MPA Network Resources

Detailed MPA guidebooks maps and brochures:

[www.wildlife.ca.gov/MPAs/Network](http://www.wildlife.ca.gov/MPAs/Network)

California Marine Life Protection Act Marine Protected Areas Master Plan:

[www.wildlife.ca.gov/Conservation/Marine/MPAs/Master-Plan](http://www.wildlife.ca.gov/Conservation/Marine/MPAs/Master-Plan)

Marine Life Protection Act Summary and Network Goals:

[www.wildlife.ca.gov/MPAs/Network-Goals](http://www.wildlife.ca.gov/MPAs/Network-Goals)



For more information, visit:

[www.wildlife.ca.gov/MPAs](http://www.wildlife.ca.gov/MPAs)

Email:

[AskMPA@wildlife.ca.gov](mailto:AskMPA@wildlife.ca.gov)

MPA Mobile:



Report poaching and polluting,  
Call CalTIP

1-888-334-2258

The information in this document does not replace the official regulatory language found in the California Code of Regulations Title 14, Section 632 [www.wildlife.ca.gov/Conservation/Marine/MPAs/Network/Title-14-Section-632](http://www.wildlife.ca.gov/Conservation/Marine/MPAs/Network/Title-14-Section-632)