

What is a California marine protected area (or "MPA")?

An MPA is a type of managed area primarily set aside to protect or conserve marine life and habitats in marine or estuarine waters. California's MPA Network consists of 124 areas with varying levels of protection, and 14 special closures, all designed to help safeguard the state's marine ecosystems. Fishing and collecting are banned at marine reserves such as Mattole Canyon State Marine Reserve, providing this MPA with the highest level of protection.

One goal for California's MPAs was to strategically place them near each other to form an interconnected network that would help to preserve the flow of life between marine ecosystems. Within that network each MPA has unique goals and regulations, and non-consumptive activities, permitted scientific research, monitoring, and educational pursuits may be allowed.

Why was this location chosen for a state marine reserve?

One of the goals for Mattole Canyon State Marine Reserve is to protect the submarine canyon, deep sandy seafloor, and offshore reef habitats found there. The reserve covers about three-quarters of a square mile of Mattole Submarine Canyon and its deep trenches, where sablefish and thornyhead rockfish live. Swift currents in the area continually smooth and flatten the canyon's sandy sediments. Seasonal upwelling brings nutrients from the deep ocean into the reserve, creating highly productive conditions that support diverse marine life. Giant Pacific octopus, petrale sole, kelp greenling, mushroom soft coral, and feather stars feed on plankton, shrimp and other crustaceans in the reserve's deep waters. The reserve's mostly sandy seafloor includes patches of rocky reef where canary rockfish, lingcod, and quillback rockfish shelter from the fast-moving currents, and fields of white-plumed anemones dot the reserve's seafloor.

Placing a state marine reserve here provides very high levels of protection for local marine species and the habitats they use.



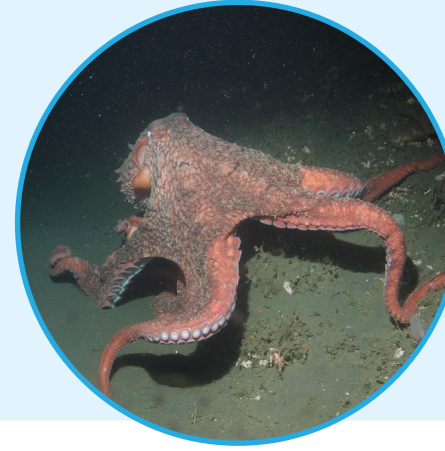
Report poachers and polluters
Call CaTIP: 1 (888) 334-2258

or text 847411 - begin message with "Caltip"
followed by the details.



Quick Facts: Mattole Canyon State Marine Reserve

- **MPA size:** 9.79 square miles
- **Depth range:** 82 to 1,646 feet
- **Habitat composition:**
 - Rock: 0.78 square miles
 - Sand/mud: 9.02 square miles



Non-Consumptive
Activities

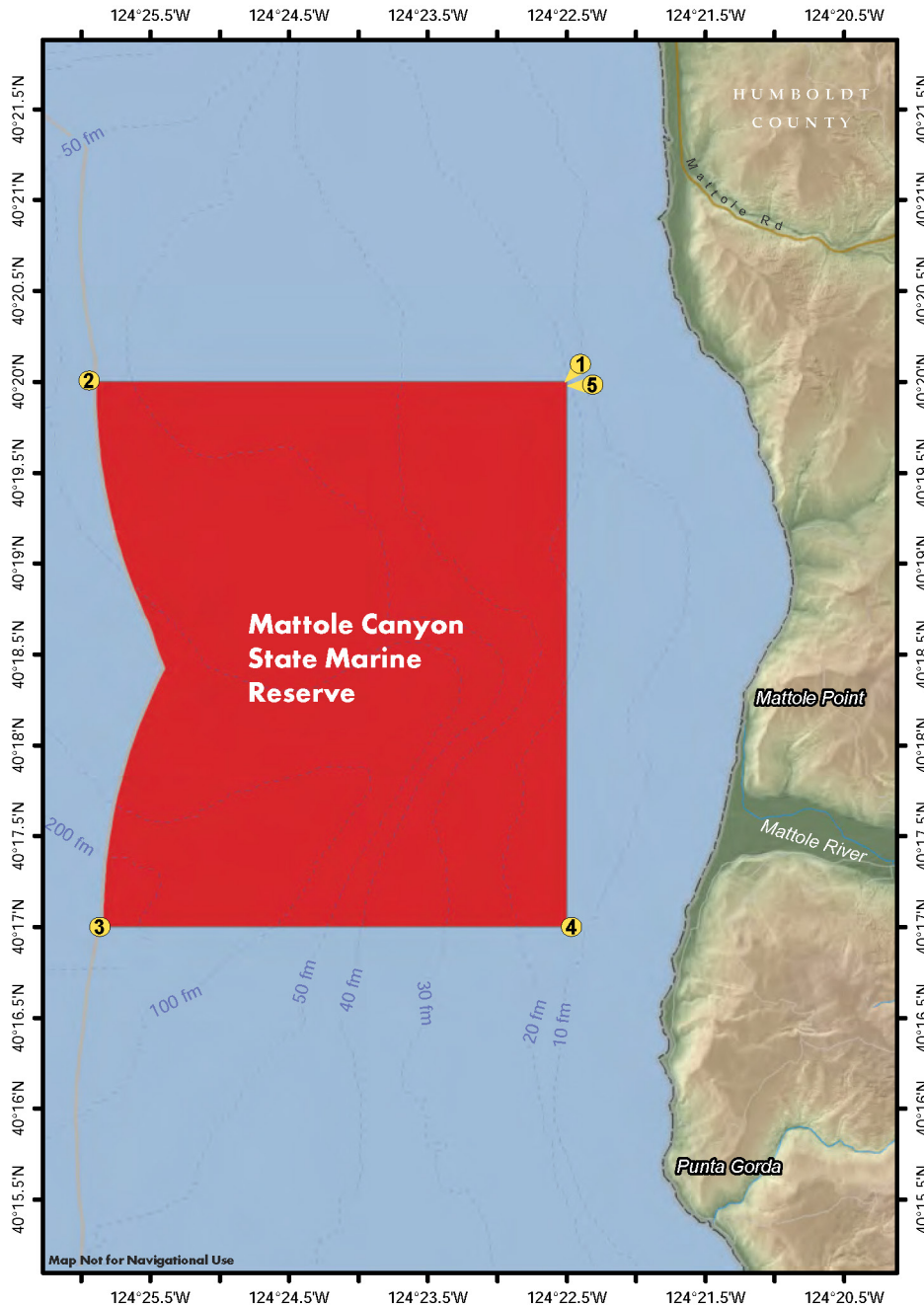
No Fishing

No Collecting

Further Information:

- MPA Website: www.wildlife.ca.gov/MPAs
- MPA and Sportfishing Interactive Map: www.wildlife.ca.gov/OceanSportfishMap
- Email: AskMarine@wildlife.ca.gov

Photos - Upper: View of the Mattole R. and Mattole Canyon State Marine Reserve, CDFW photo by M. Robbins. **Lower right:** Yelloweye rockfish and sea cucumber near the reserve, CDFW/MARE photo. **Lower left:** Giant Pacific octopus near the reserve, CDFW/MARE photo.



Mattole Canyon State Marine Reserve Boundary and Regulations from California Code of Regulations Title 14, Section 632

Boundary:

This area is bounded by straight lines connecting the following points in the order listed except where noted:

- 40° 20.000' N. lat. 124° 22.500' W. long. ①;
- 40° 20.000' N. lat. 124° 25.902' W. long. ②; thence southward along the three nautical mile offshore boundary to
- 40° 17.000' N. lat. 124° 25.869' W. long. ③;
- 40° 17.000' N. lat. 124° 22.500' W. long. ④; and
- 40° 20.000' N. lat. 124° 22.500' W. long. ⑤

Permitted/Prohibited Uses:

It is unlawful to injure, damage, take, or possess any living, geological, or cultural marine resource.

Take may be authorized for research, restoration, and monitoring purposes under a scientific collecting permit. See California Code of Regulations Title 14, Section 632(a).

The information in this document does not replace the official regulatory language found in the California Code of Regulations Title 14, Section 632. View these regulations online at www.wildlife.ca.gov/CCR-T14-MPAs.