

# Sea Lion Gulch State Marine Reserve

Northern California Marine Protected Areas (MPAs), *Implemented December 2012*



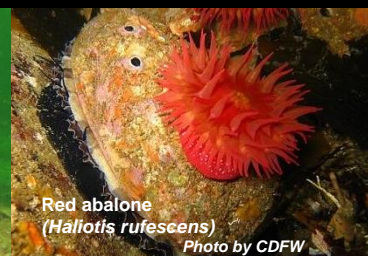
School of juvenile rockfish  
Photo by Kevin Joe



Steller sea lion  
(*Eumetopias jubatus*)  
Photo by A. Lui



Lingcod  
(*Ophiodon elongatus*)  
Photo by Kevin Joe



Red abalone  
(*Haliotis rufescens*)  
Photo by CDFW

## Site Overview

Photos are representative of the North Coast Region and may not be within this MPA.

### What is an MPA?

MPAs are a type of [marine managed area](#) (MMA) where marine or estuarine waters are set aside primarily to protect or conserve marine life and associated habitats. California has a coastal network of 124 protected areas designed to help increase the coherence and effectiveness of protecting the state's marine life, habitats, and ecosystems. The network includes three types of MPA: [state marine reserve](#) (SMR), [state marine conservation area](#) (SMCA), and [state marine park](#) (SMP); one MMA: [state marine recreational management area](#) (SMRMA); and [special closures](#). There are 119 MPAs, 5 MMAs and 15 special closures, each with unique boundaries and regulations in the network. Non-consumptive activities, restoration, and permitted scientific research are allowed.

### What is an SMR?

An **SMR** is a type of MPA that protects resources by prohibiting the recreational and/or commercial take of all marine resources. (Area restrictions are defined in [Title 14, Section 632\(a\)\(1\)\(A\)](#)).

### Sea Lion Gulch SMR Overview

- **MPA size:** 10.42 square miles
- **Depth range:** 0 to 375 feet
- **Along-shore span (shoreline):** 2.0 miles

### Where is Sea Lion Gulch SMR?



### Sea Lion Gulch SMR Key Habitats

- **Beaches:** 2.42 miles
- **Rocky shores:** 2.32 miles
- **Sand (all depths):** 6.45 square miles
- **Rock (all depths):** 3.1 square miles
- **Unidentified (all depths):** 0.83 square miles

### Boundaries and Regulations

**Boundary:** This area is bounded by the mean high tide line and straight lines connecting the following points in the order listed except where noted:

40° 14.400' N. lat. 124° 19.983' W. long.;  
40° 14.400' N. lat. 124° 25.943' W. long.; thence southward along the three nautical mile offshore boundary to  
40° 12.800' N. lat. 124° 24.809' W. long.; and  
40° 12.800' N. lat. 124° 18.155' W. long.

**All take is prohibited in Sea Lion Gulch SMR.**

# Sea Lion Gulch State Marine Reserve

## How and Why Sea Lion Gulch was Chosen for an SMR

MPAs were designed through a collaborative, regional public process by a cross-interest regional stakeholder group (RSG). Using scientific criteria, public input and local resource knowledge the RSG developed MPA proposals. Proposals included site specific rationale (why the site should be an MPA-*included below*), the classification (type of MPA), boundaries, and regulations. Final MPA proposals were sent to the California Fish and Game Commission (Commission) for their adoption process. Sea Lion Gulch SMR was adopted by the Commission in 2012.

### **North Coast RSG Identified Rationale for Sea Lion Gulch SMR:**

Intent of this MPA is to capture a wide range of biodiversity habitats, protect seabird colonies, and provide research opportunities. Very remote area with limited human usage.

## Species Likely to Benefit from the Establishment of MPAs in California

Species likely to benefit from establishing an MPA are those, whose home range, behavior, reproduction, exploitation rate or population status indicates that they may benefit from spatial management. This includes species that are directly targeted by fisheries, those which are caught incidental to fishing for the target species (bycatch) and which cannot be returned to the water with a high rate of survival, and those which may be indirectly impacted through ecological changes within MPAs.

For a list of species likely to benefit from MPAs statewide: [www.dfg.ca.gov/marine/mpa/species.asp](http://www.dfg.ca.gov/marine/mpa/species.asp)

For a list of species likely to benefit from north coast MPAs: [www.dfg.ca.gov/marine/pdfs/binders\\_nc/b2\\_3.pdf](http://www.dfg.ca.gov/marine/pdfs/binders_nc/b2_3.pdf)

## North Coast Regional Resources

California MPA Overview:

[www.wildlife.ca.gov/MPAs/Network-Overview](http://www.wildlife.ca.gov/MPAs/Network-Overview)

North Coast Regional Goals and Objectives:

[www.dfg.ca.gov/mlpa/pdfs/binders\\_nc/b1\\_29.pdf](http://www.dfg.ca.gov/mlpa/pdfs/binders_nc/b1_29.pdf)

California MLPA North Coast Study Region Description of MPAs:

[www.dfg.ca.gov/marine/pdfs/northcoastproposals/rec\\_description\\_eca.pdf](http://www.dfg.ca.gov/marine/pdfs/northcoastproposals/rec_description_eca.pdf)

Methods Used to Evaluate MPAs in the North Coast:

[www.dfg.ca.gov/marine/pdfs/northcoastproposals/evaluationmethods.pdf](http://www.dfg.ca.gov/marine/pdfs/northcoastproposals/evaluationmethods.pdf)

MPA Research and Monitoring Activities:

[www.wildlife.ca.gov/MPAs/Research-And-Monitoring](http://www.wildlife.ca.gov/MPAs/Research-And-Monitoring)

Regional MPA Statistics:

[www.wildlife.ca.gov/MPAs/Statistics](http://www.wildlife.ca.gov/MPAs/Statistics)

Regional Planning History:

[www.wildlife.ca.gov/Conservation/Marine/MPAs/Planning-Process](http://www.wildlife.ca.gov/Conservation/Marine/MPAs/Planning-Process)

## California MPA Network Resources

Detailed MPA guidebooks maps and brochures:

[www.wildlife.ca.gov/MPAs/Network](http://www.wildlife.ca.gov/MPAs/Network)

California Marine Life Protection Act Marine Protected Areas Master Plan:

[www.wildlife.ca.gov/Conservation/Marine/MPAs/Master-Plan](http://www.wildlife.ca.gov/Conservation/Marine/MPAs/Master-Plan)

Marine Life Protection Act Summary and Network Goals:

[www.wildlife.ca.gov/MPAs/Network-Goals](http://www.wildlife.ca.gov/MPAs/Network-Goals)



**For more Information, visit:**

[www.wildlife.ca.gov/MPAs](http://www.wildlife.ca.gov/MPAs)

**Email:**

[AskMPA@wildlife.ca.gov](mailto:AskMPA@wildlife.ca.gov)

**MPA Mobile:**



Report poaching and polluting,

Call CalTIP

**1-888-334-2258**

The information in this document does not replace the official regulatory language found in the California Code of Regulations Title 14, Section 632 [www.wildlife.ca.gov/Conservation/Marine/MPAs/Network/Title-14-Section-632](http://www.wildlife.ca.gov/Conservation/Marine/MPAs/Network/Title-14-Section-632)