

# CHINOOK SALMON MONITORING IN COASTAL STREAMS OF CENTRAL CALIFORNIA



*Starting this fall 2014, the California Department of Fish and Wildlife (Department) will augment in-stream surveys for fall-run Chinook salmon to see if they are entering coastal streams to spawn. The Department's focus is to determine if fall-run Chinook salmon are present in coastal streams, and if so, their origin.*

## MONITORING LOCATIONS

Surveys are being conducted in coastal streams in Marin, San Mateo, Santa Cruz, and Monterey Counties from late August through mid December. The Department's focus will be on streams that are open to the ocean during the fall and are not blocked by a sandbar: Lagunitas Creek; San Lorenzo River; Arana Gulch; Old Salinas Channel; and the Big Sur River. In addition, teams will conduct bi-weekly evaluation of other river mouths to determine whether they are open and if Chinook salmon are present. All surveys will be conducted from the stream mouth to the first upstream barrier that blocks passage of adult Chinook salmon.





San Lorenzo River (Santa Cruz County), © CDFW

## DEPARTMENT CONTACTS

*San Mateo, Santa Cruz, and Monterey Counties*

Department's Monterey Office: (831) 649-2870

Jennifer Nelson at Jennifer.Nelson@wildlife.ca.gov

*Marin County*

George Neillands at George.Neillands@wildlife.ca.gov or by phone: (707) 576-2812

*General Monitoring Information*

Kristine Atkinson at Kristine.Atkinson@wildlife.ca.gov

## FOR FURTHER INFORMATION

Additional information about this survey is online at the Department's website:

<http://www.dfg.ca.gov/fish/Resources/Chinook/>

## MONITORING ACTIVITIES

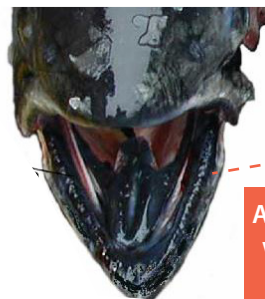
Survey teams will hike streams to determine if Chinook salmon and /or their redds (nests) are present. If Chinook salmon are present, teams will collect heads (from adipose fin-clipped individuals) and tissue samples (from all individuals) for additional analyses. These surveys will help the Department manage California's fishery resources.

## HOW TO PARTICIPATE IN THIS EFFORT

The general public can assist the Department by reporting observations of live Chinook salmon, redds, and/or carcasses.

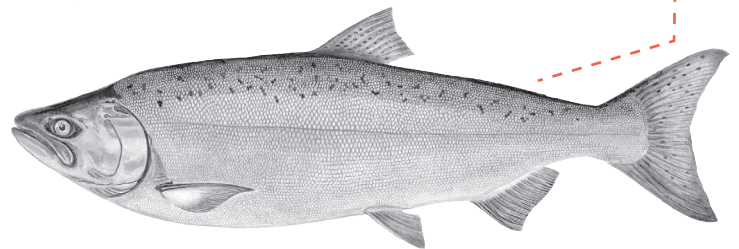
If interested in participating in the sampling effort, please contact the Department's staff listed below with the following information, if available: location of siting; number of Chinook salmon (live or dead) or redds; presence/absence of adipose fin.

## IDENTIFICATION OF CHINOOK SALMON



Base of teeth all black

Adipose fin absent. Missing adipose fin with healed scar signifies presence of coded wire tag.



Fall-run Chinook salmon, © CDFW



Lagunitas Creek (Marin County), © CDFW