

Striped Bass Tag Returns in Relation to River Flow

California Department of Fish and Wildlife (CDFW)

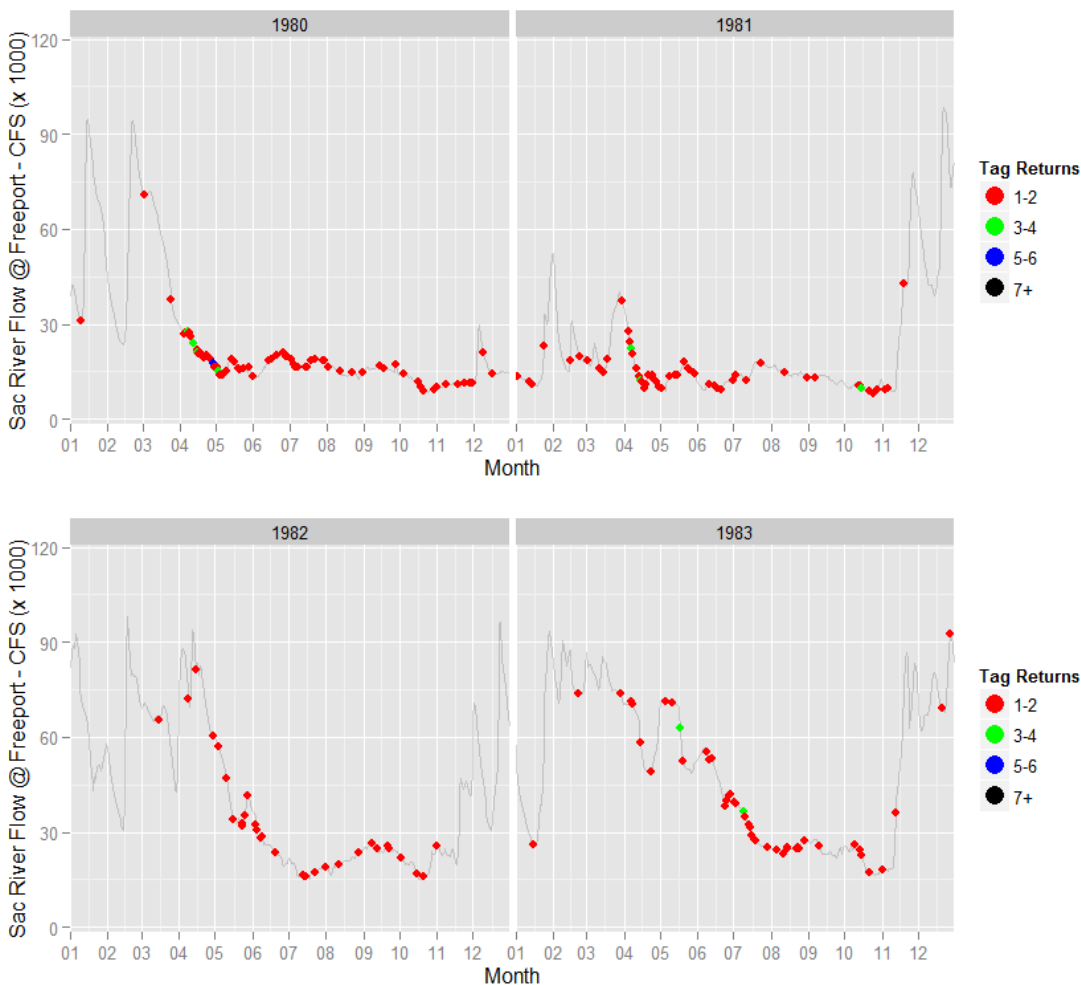
December 11, 2015

The plots below display Sacramento River hydrograph and dates anglers fishing on the Sacramento River recaptured a tagged striped bass (a tag return). Hydrograph data (in cubic feet per second, CFS) are from [Freeport](#) for the period January 1980 to September 2014. Tag return data are for the same period and are represented as points on the graph, color-coded to indicate number of tags for that day.

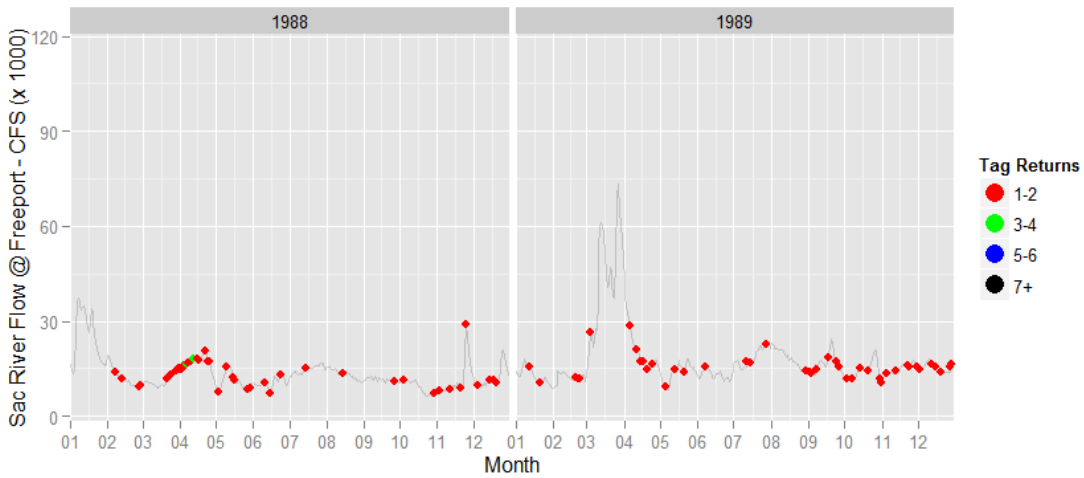
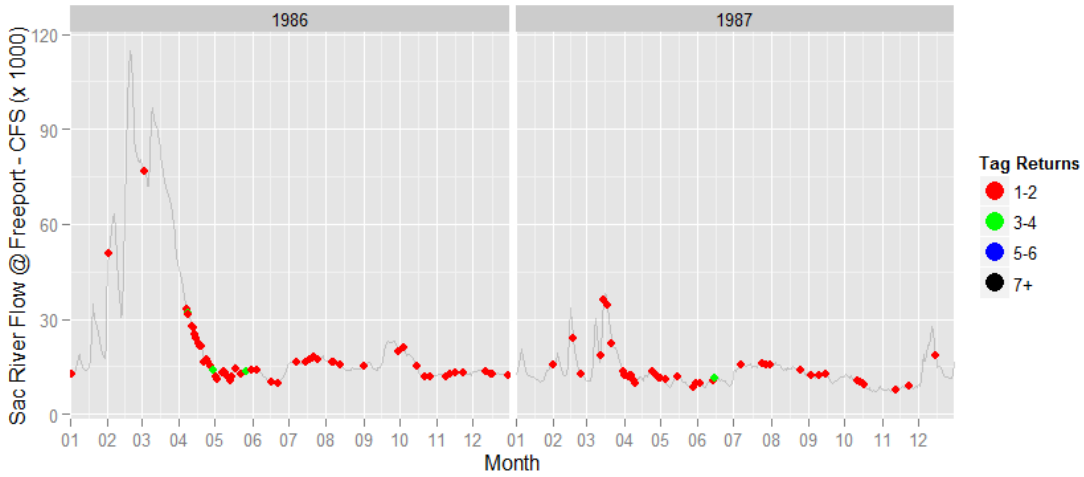
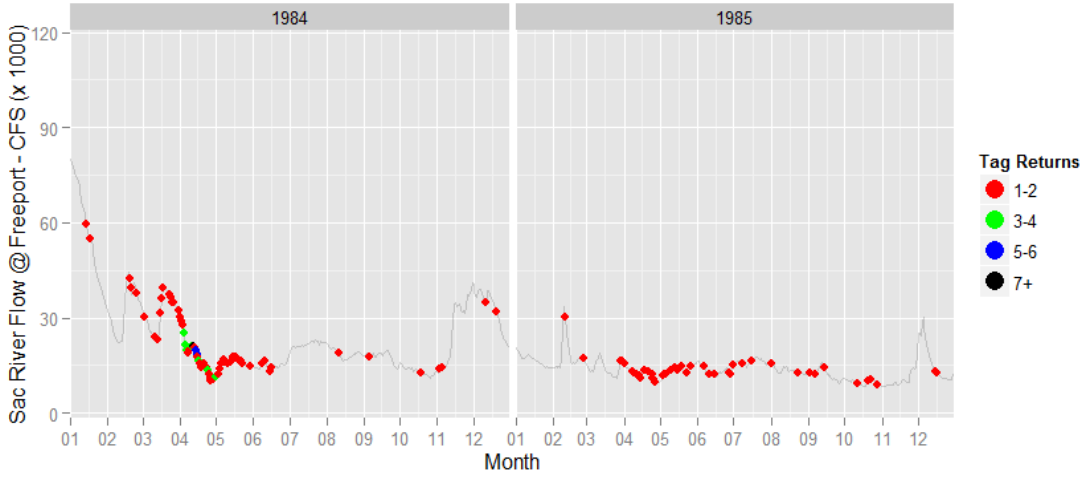
For this purpose, only tag returns from anglers fishing on the Sacramento River (in the reach from Courtland to Feather River) were used. Lengths for these tagged striped bass were > 35 centimeters fork length (or ~ 15 inches total length), as recorded during tagging.

For further information on the Department's Striped Bass mark-recapture (tagging) program, click [here](#).

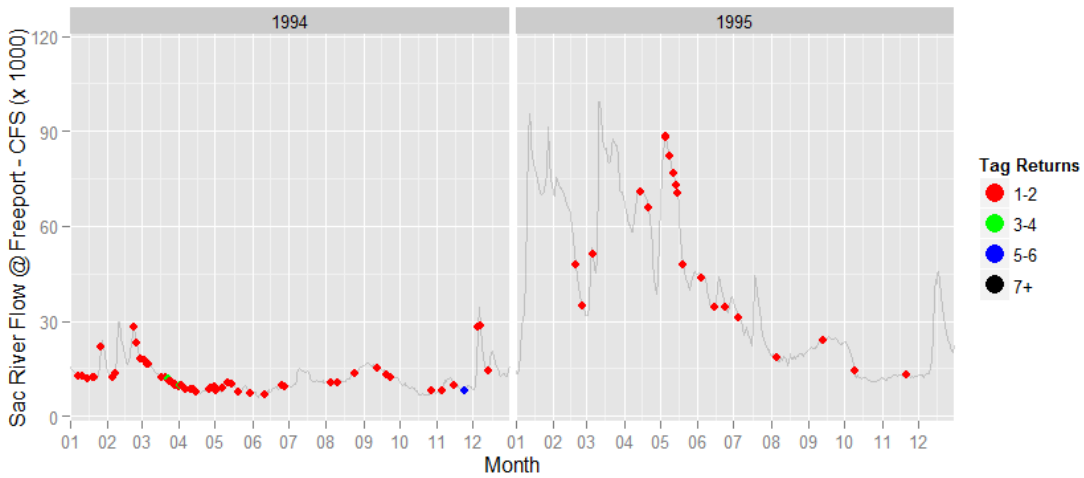
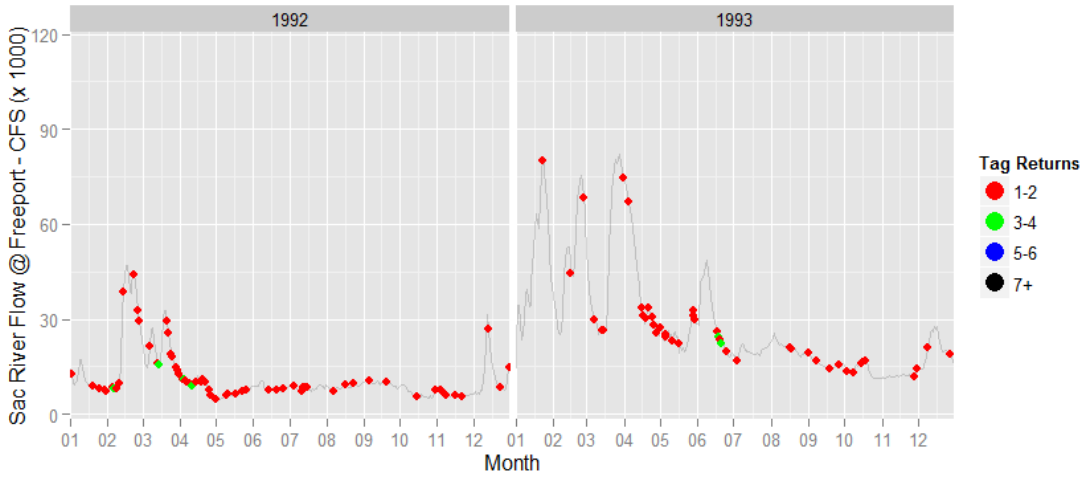
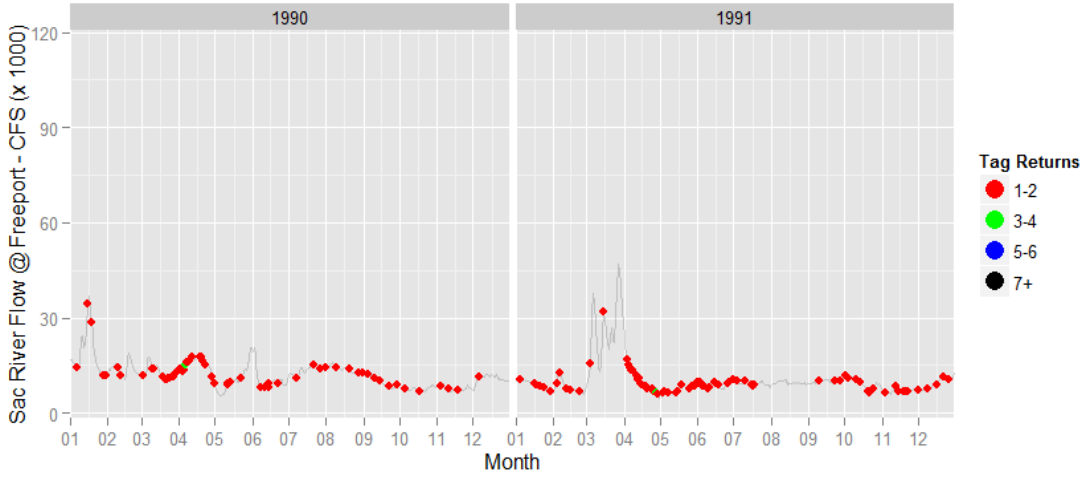
Plots for anglers fishing the Sacramento River from Courtland to Feather River



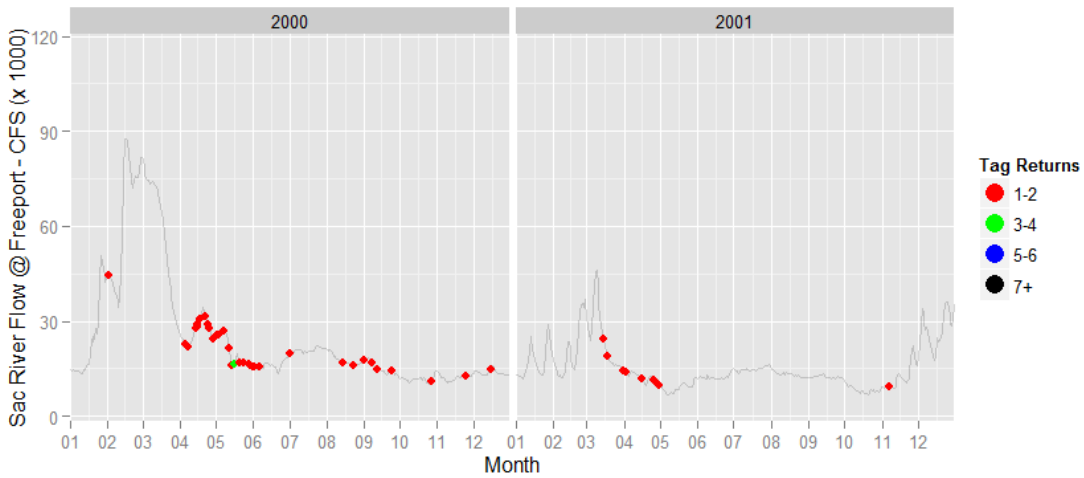
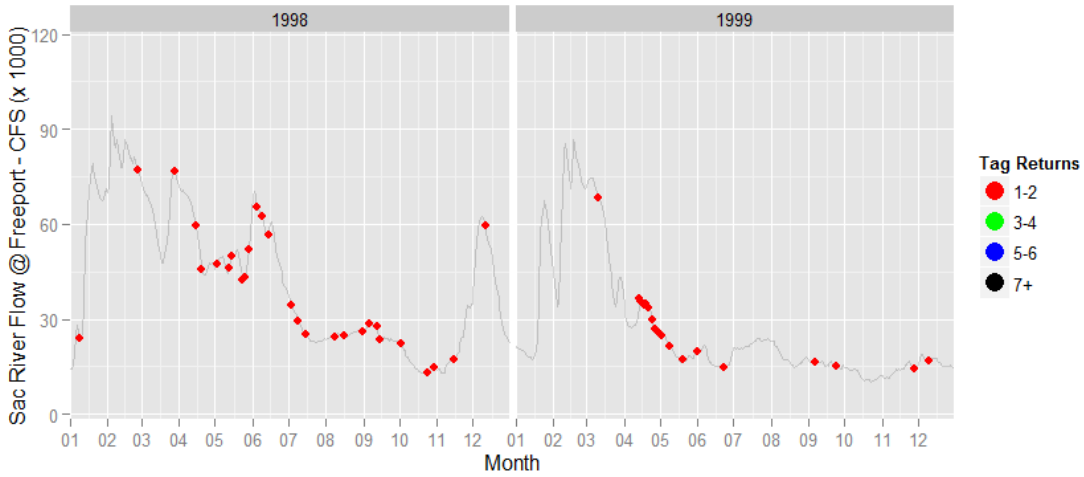
Striped Bass Tag Returns in Relation to River Flow



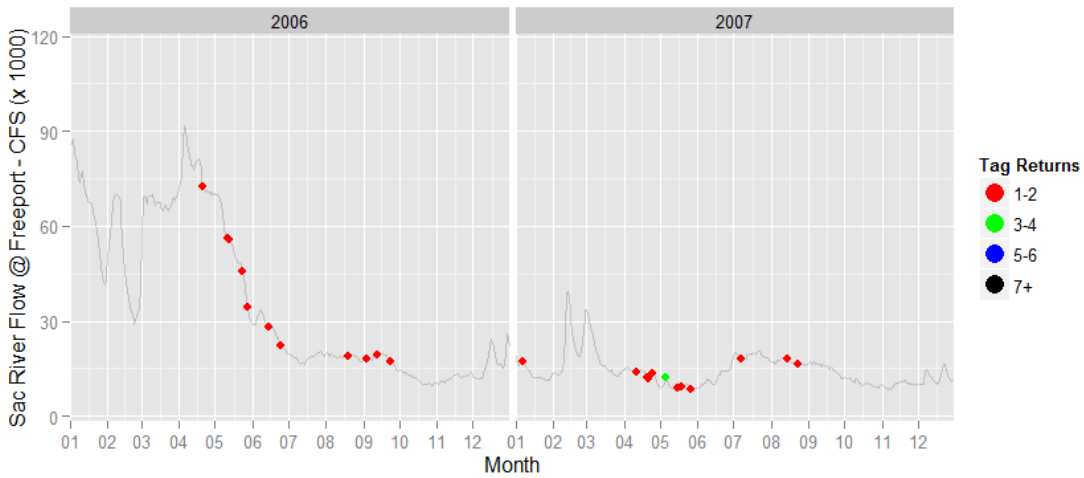
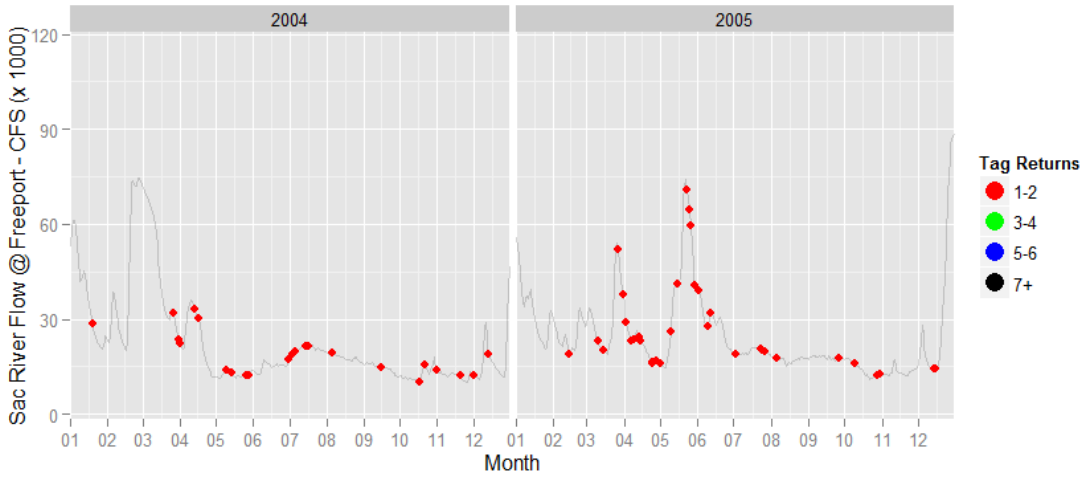
Striped Bass Tag Returns in Relation to River Flow



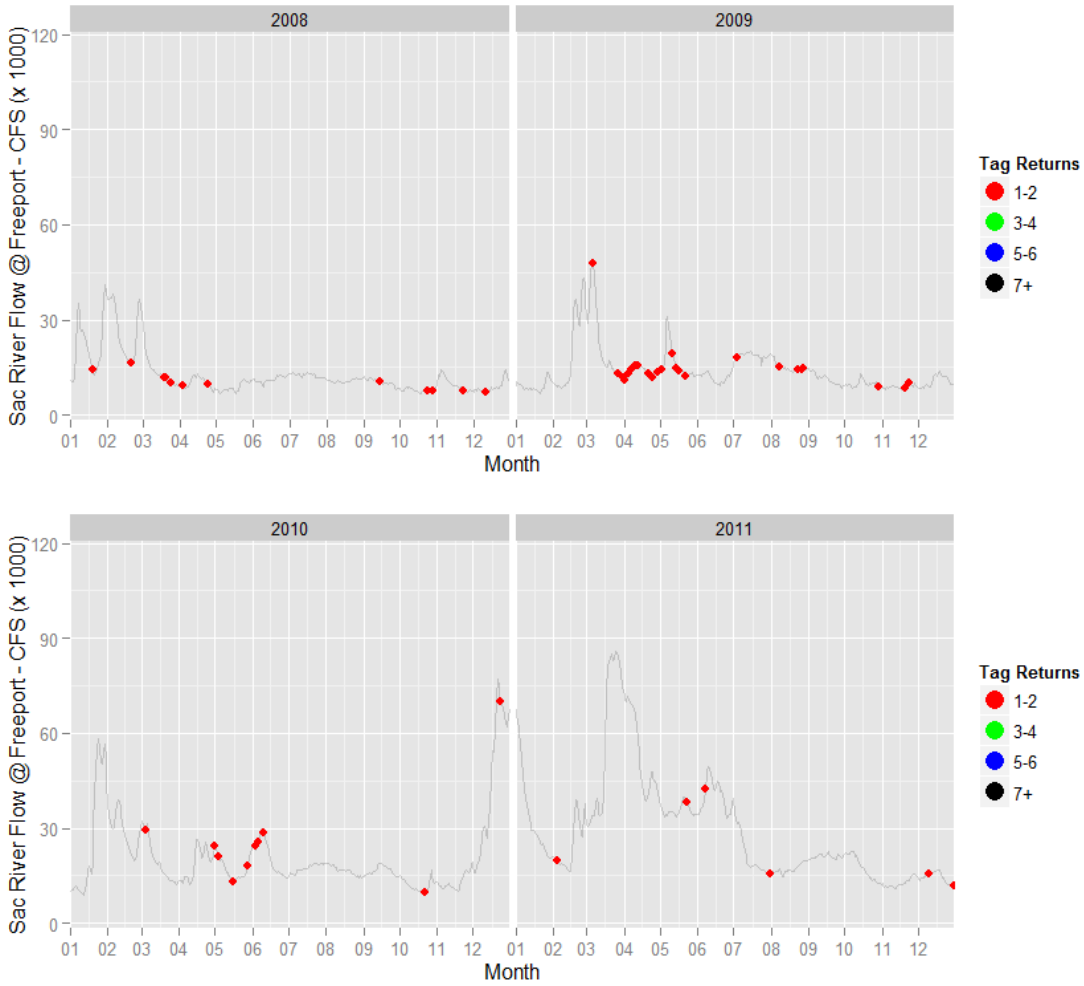
Striped Bass Tag Returns in Relation to River Flow



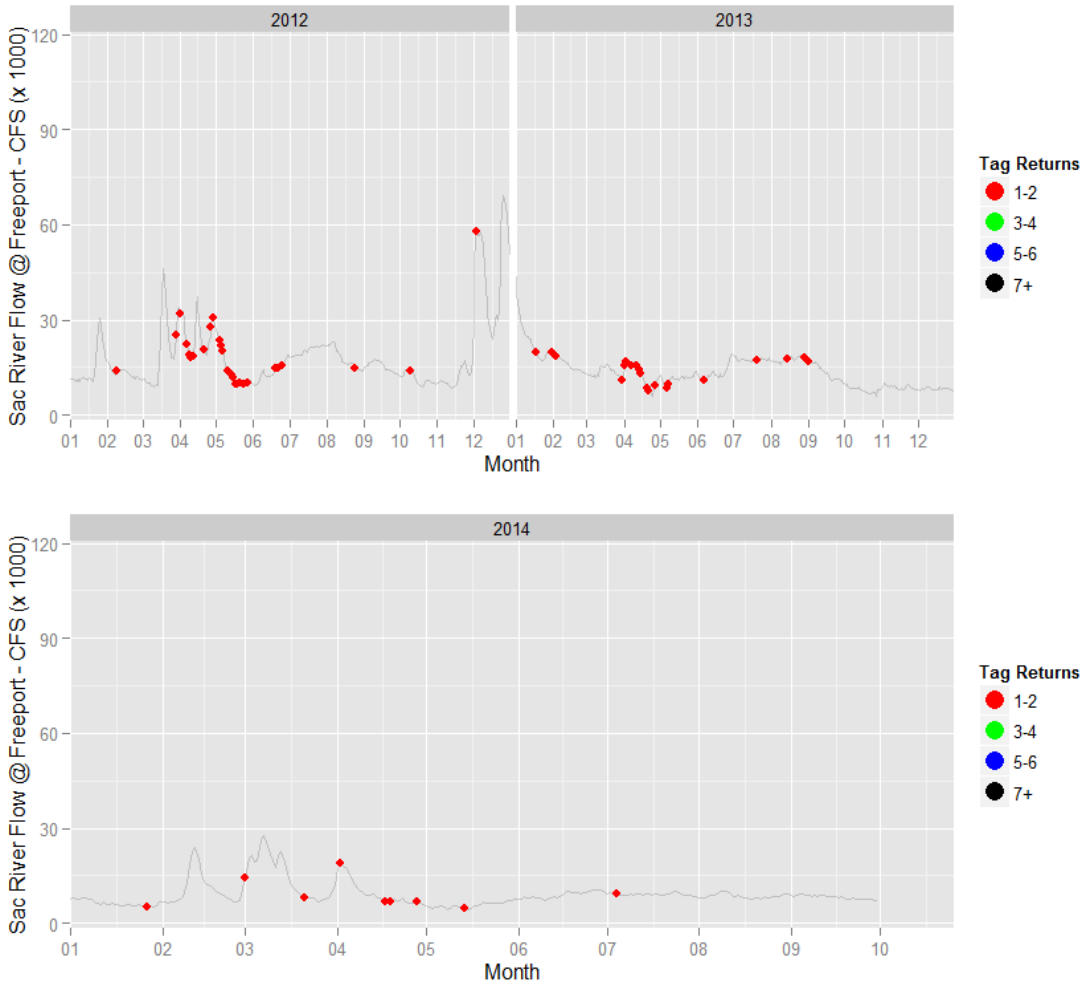
Striped Bass Tag Returns in Relation to River Flow



Striped Bass Tag Returns in Relation to River Flow



Striped Bass Tag Returns in Relation to River Flow



End of report