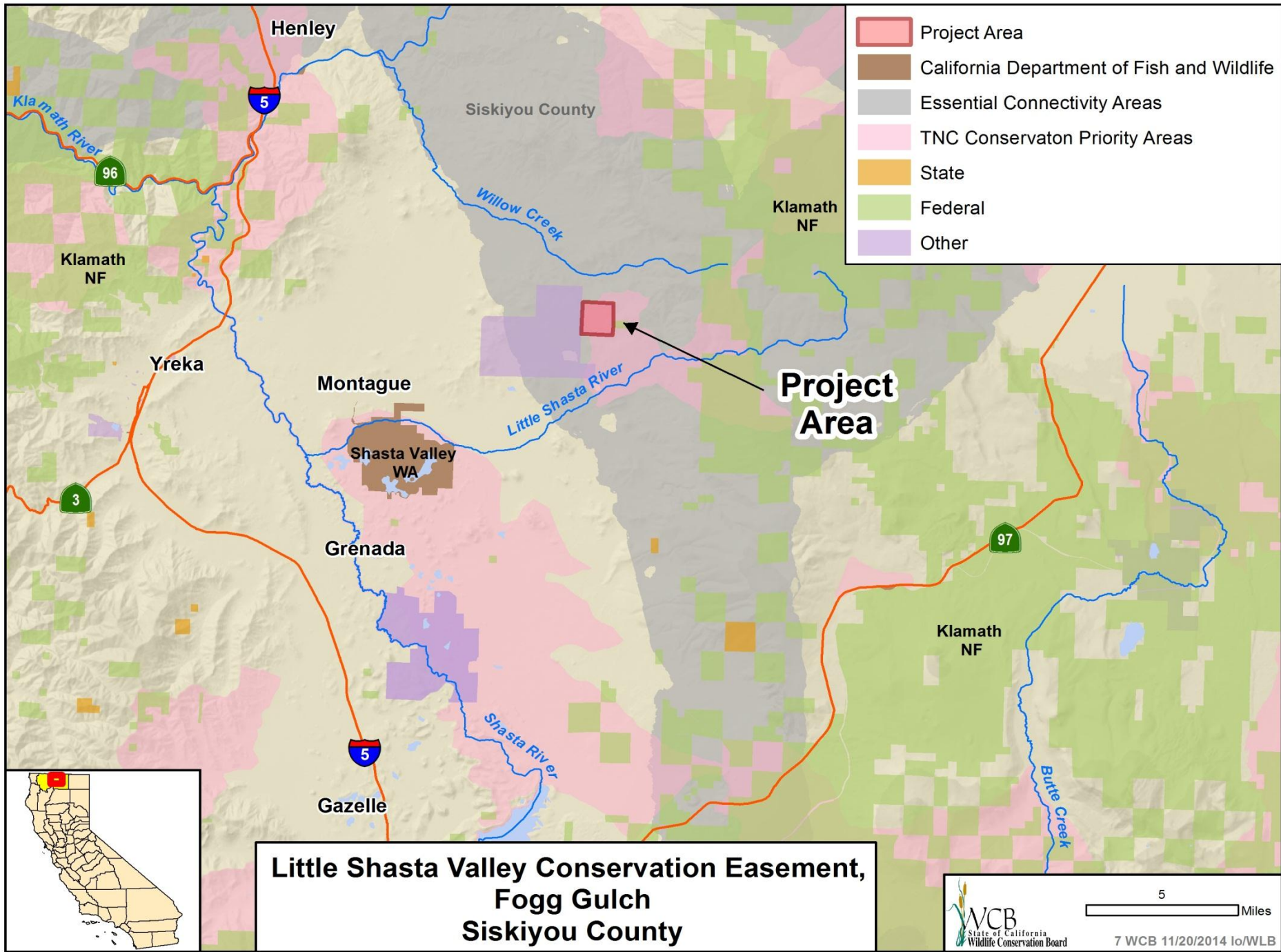


November 20, 2014
Wildlife Conservation Board Meeting
10:00 AM, State Capitol, Room 112
Sacramento, California 95814





#7. Little Shasta Valley Conservation Easement, Fogg Gulch



Photo courtesy of Rocky Mountain Elk Foundation

- View of Little Shasta Valley Conservation Easement

#7. Little Shasta Valley Conservation Easement, Fogg Gulch



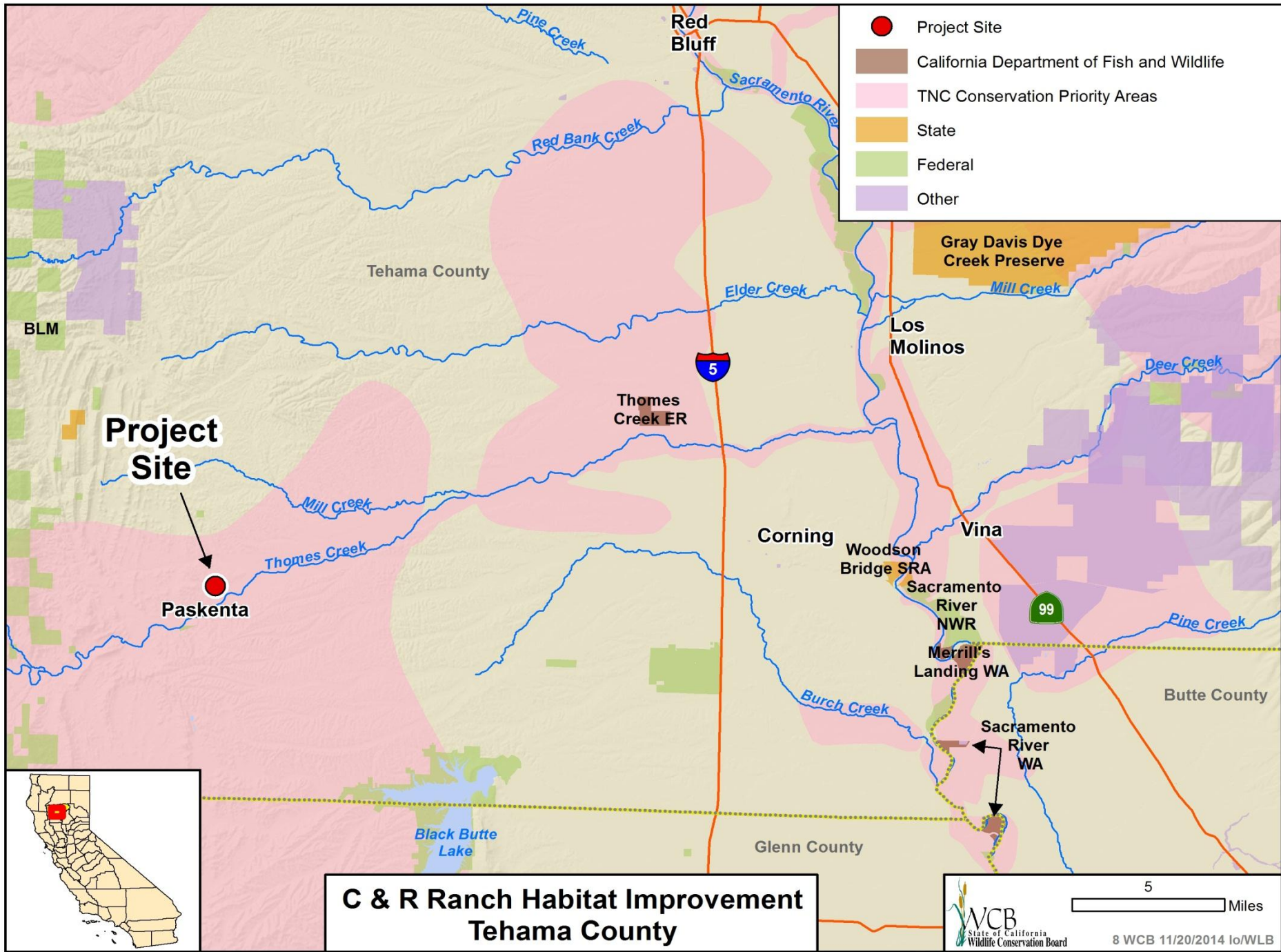
Photo courtesy of Rocky Mountain Elk Foundation

- View of property from upper elevations

#7. Little Shasta Valley Conservation Easement, Fogg Gulch



- Roosevelt Elk



C & R Ranch Habitat Improvement Tehama County

#8. C & R Ranch Habit Enhancement



■ C & R Ranch

#8. C & R Ranch Habit Enhancement



- Native grasses, C & R Ranch

#8. C & R Ranch Habit Enhancement



- Elderberry planted on stream corridor

#8. C & R Ranch Habit Enhancement



- Recent plantings: Riparian shrubs and grasses near stream banks

#8. C & R Ranch Habit Enhancement

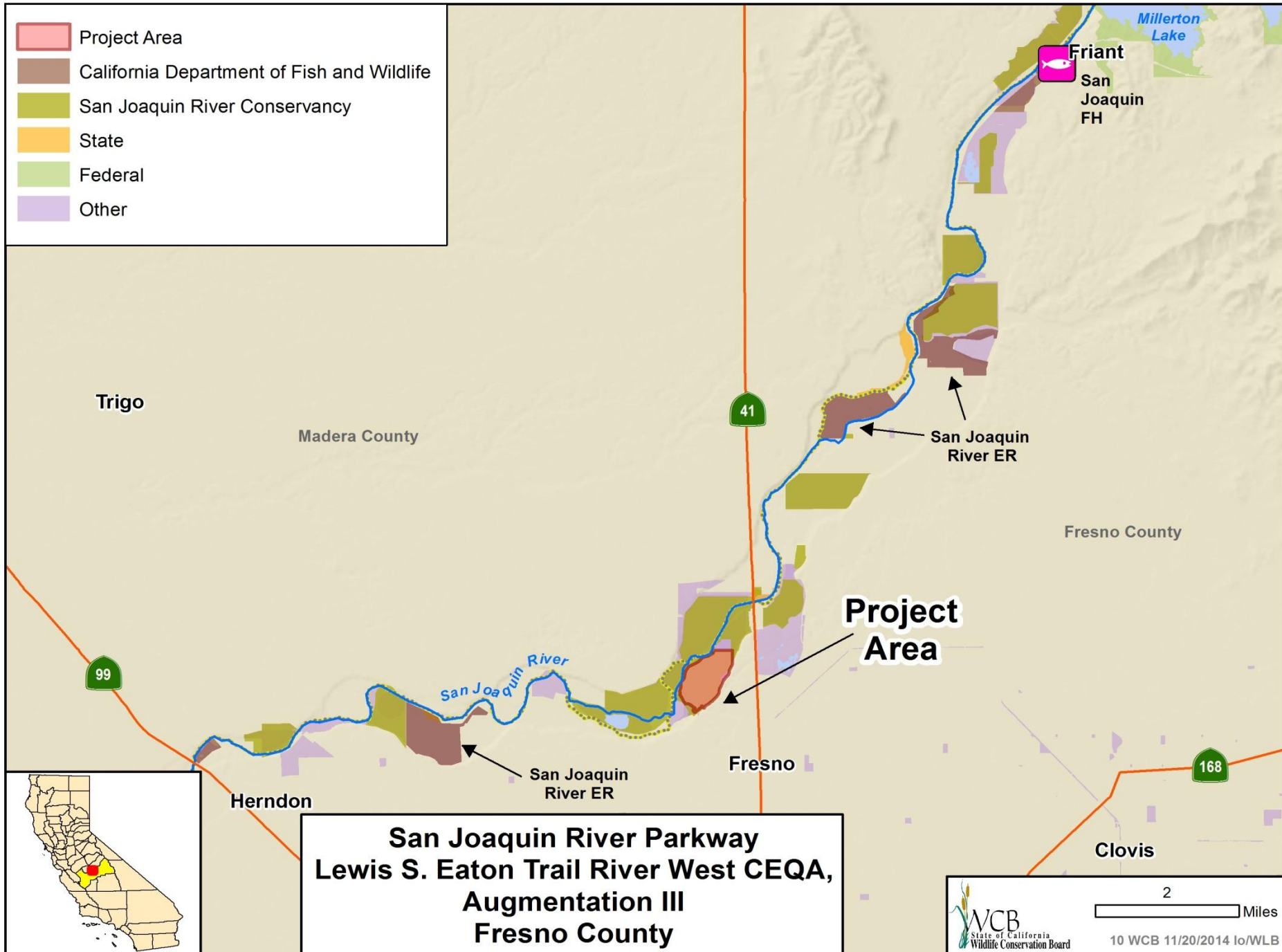


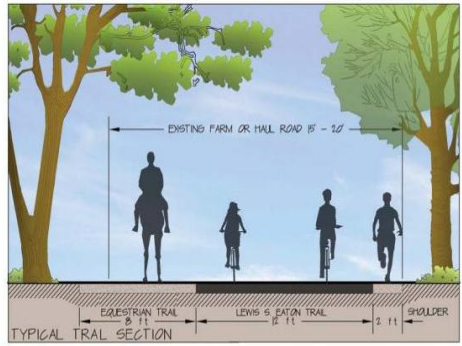
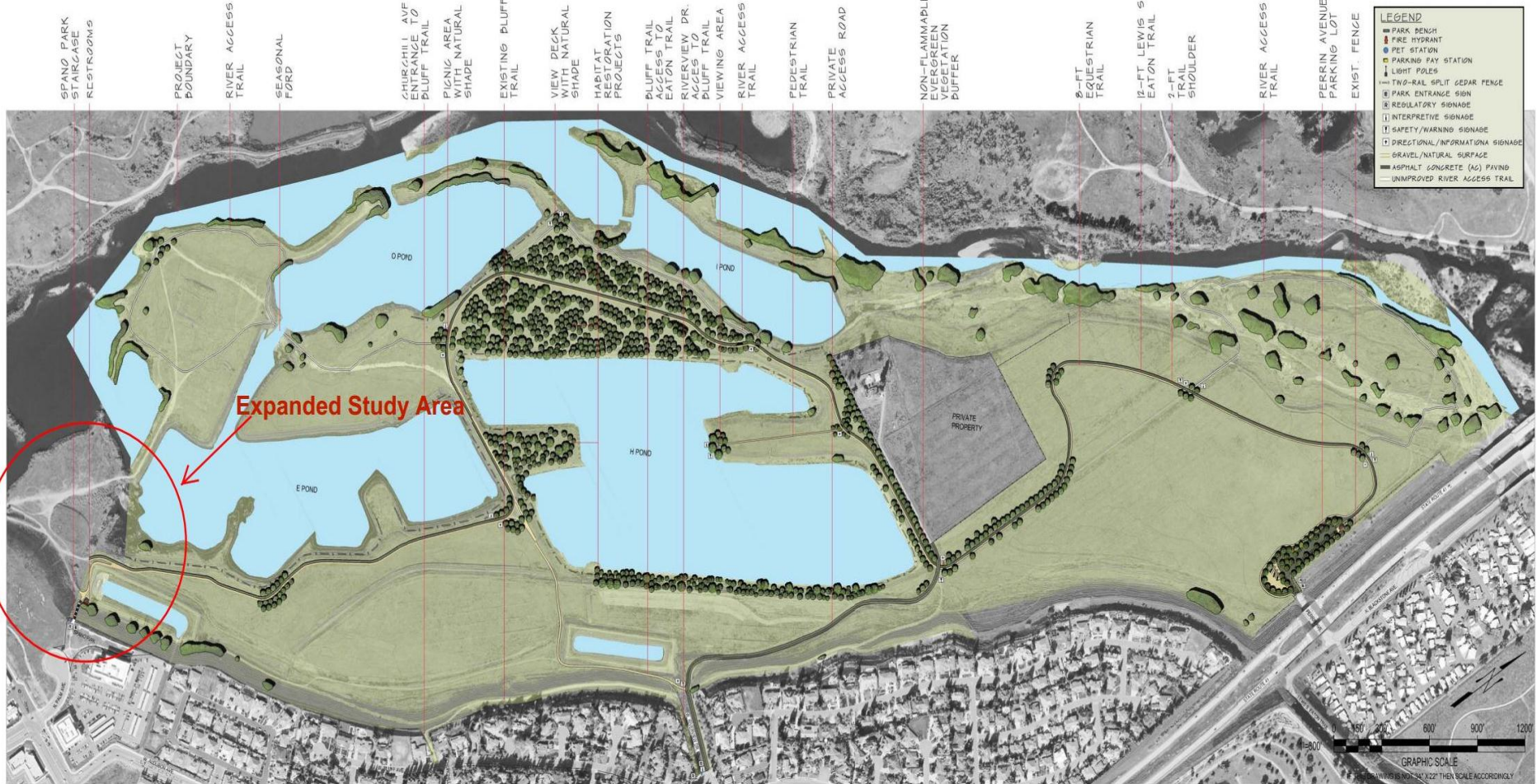
- Native grasses planted at reservoir pond site

#9. Excelsior Ranches

- This Item was withdrawn from consideration at this time.

- Project Area
- California Department of Fish and Wildlife
- San Joaquin River Conservancy
- State
- Federal
- Other

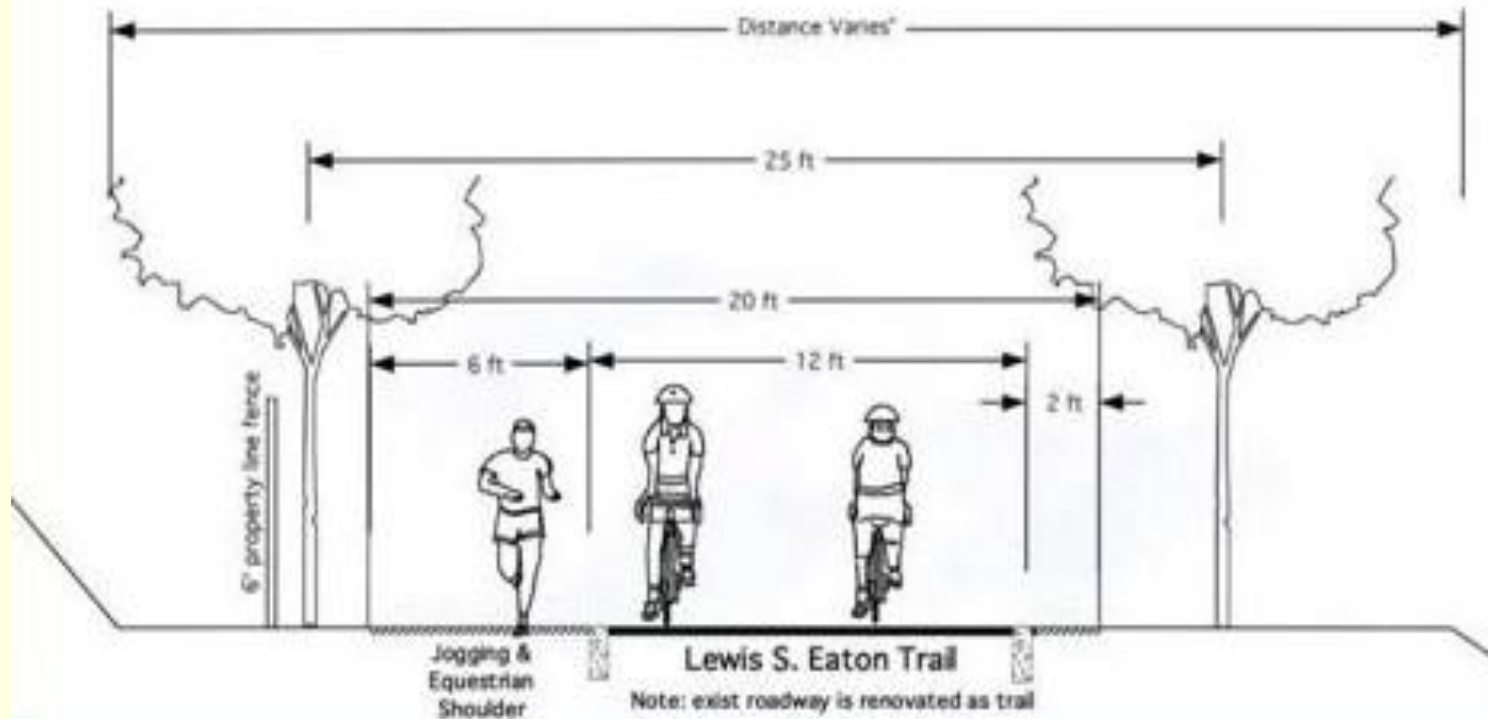




Expanded Study Area In Vicinity Of Palm and Nees Avenues

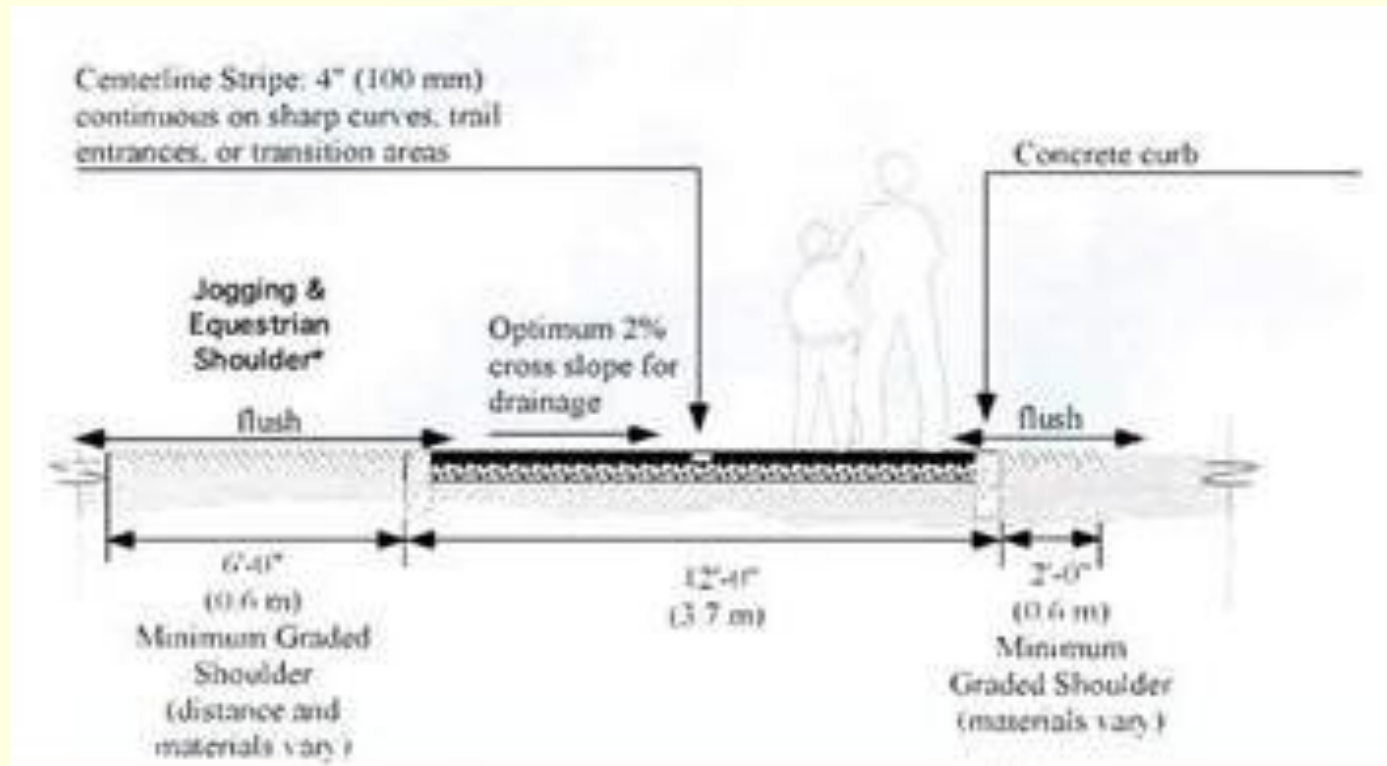
RIVER WEST FRESNO,
LEWIS S. EATON TRAIL
EXTENSION PROJECT

#10. San Joaquin River Parkway, Lewis S. Eaton Trail River West CEQA, Augmentation III



- Proposed Trail design and use

#10. San Joaquin River Parkway, Lewis S. Eaton Trail River West CEQA, Augmentation III



- Proposed trail design

#10. San Joaquin River Parkway, Lewis S. Eaton Trail River West CEQA, Augmentation III



- Proposed public access, view from the parkway looking south at Access Road and Riverview Drive

#10. San Joaquin River Parkway, Lewis S. Eaton Trail River West CEQA, Augmentation III

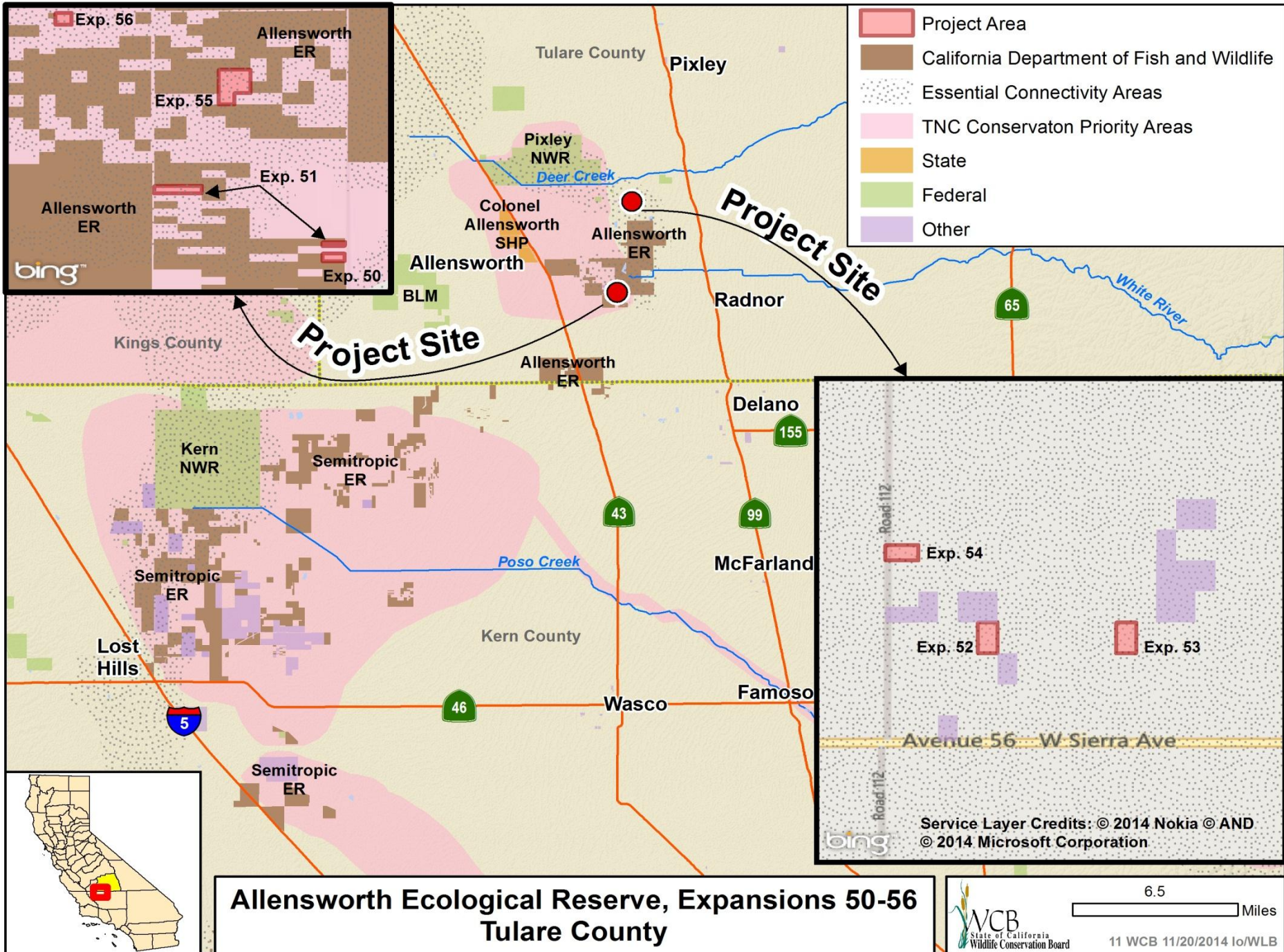


- View From Riverview Drive down private access road toward parkway

#10. San Joaquin River Parkway, Lewis S. Eaton Trail River West CEQA, Augmentation III



- View of River West from Spano Park



#11. Allensworth Ecological Reserve, Expansion 50-56



- San Joaquin kit fox

#11. Allensworth Ecological Reserve, Expansion 50-56



- Tipton Kangaroo Rat

#11. Allensworth Ecological Reserve, Expansion 50-56



- Blunt-Nosed Leopard Lizard

#11. Allensworth Ecological Reserve, Expansion 50-56

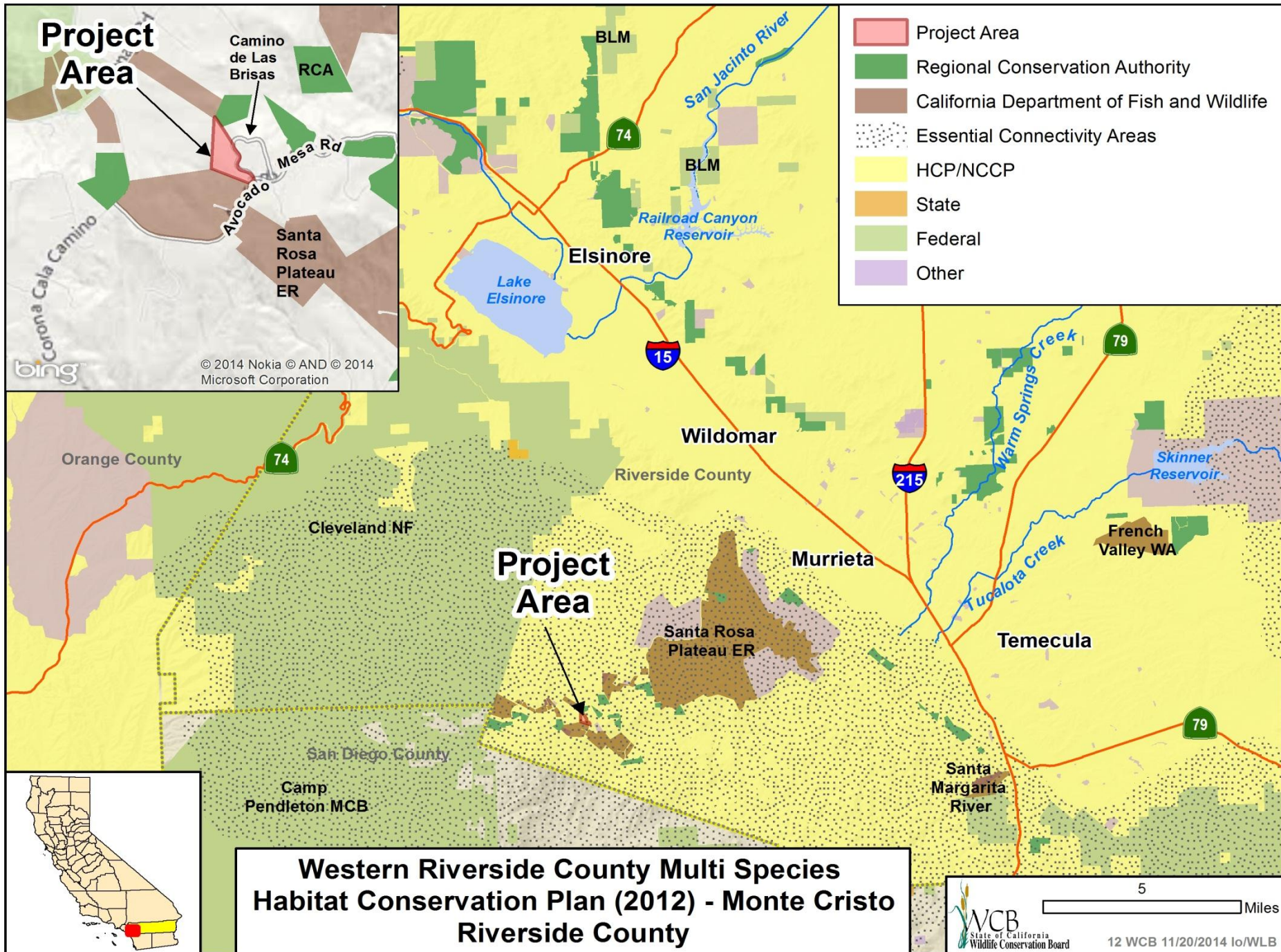


- View looking south

#11. Allensworth Ecological Reserve, Expansion 50-56



■ View looking west



#12. Western Riverside Multi-Species Habitat Conservation Plan (2012) – Monte Cristo



- The Monte Cristo property (Property) is located in a rural area of southwest Riverside County known as Tenaja

#12. Western Riverside Multi-Species Habitat Conservation Plan (2012) – Monte Cristo

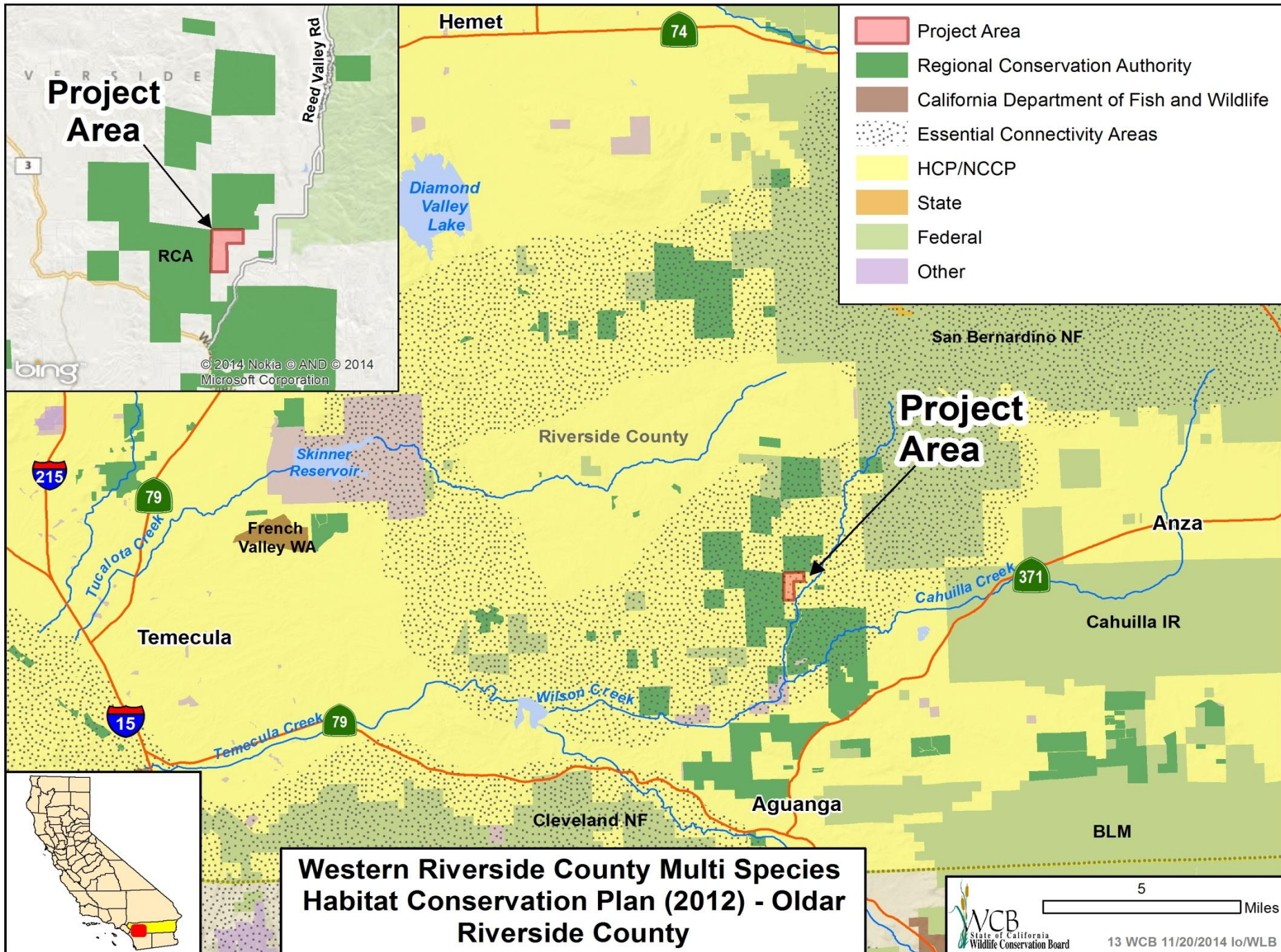


- Property's coastal sage scrub habitat is a very important ecological plant community that is essential to resident wildlife

#12. Western Riverside Multi-Species Habitat Conservation Plan (2012) – Monte Cristo



- The Western Riverside County Multi-Species Habitat Conservation Plan's reserve system provides permanent habitat protection for populations of federal and state-listed endangered and threatened species that occupy the reserve and to increase regional wildlife habitat cores and linkages that will connect existing habitat reserve areas throughout the County



#13. Western Riverside Multi-Species Habitat Conservation Plan (2012) - Oldar



- The Oldar Property lies in a rural area in unincorporated Riverside County, known as Aguanga

#13. Western Riverside Multi-Species Habitat Conservation Plan (2012) - Oldar

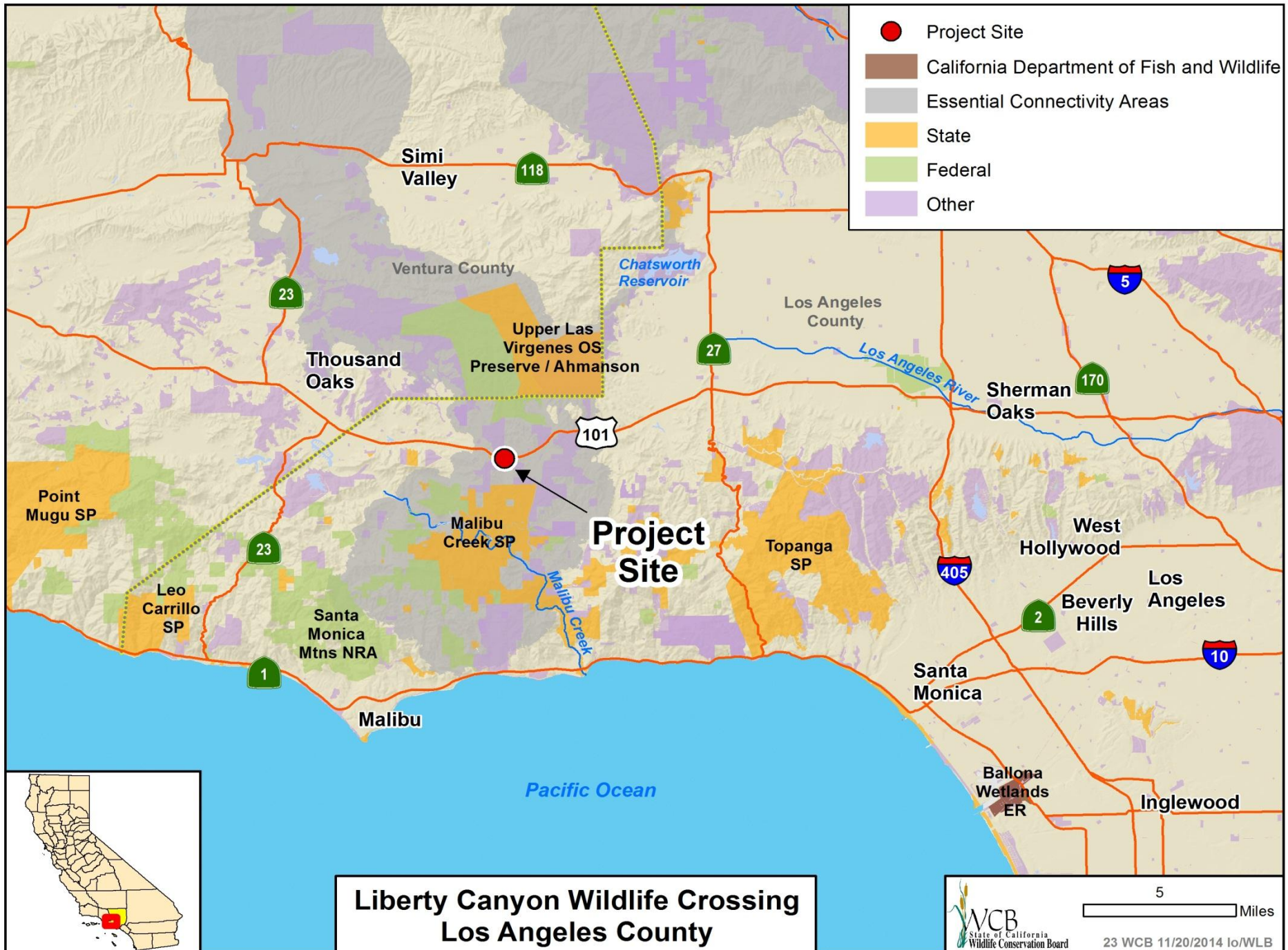


- The subject property is situated in a rolling mountainous terrain covered with coastal sage, chemise and large boulder outcroppings

#13. Western Riverside Multi-Species Habitat Conservation Plan (2012) - Oldar

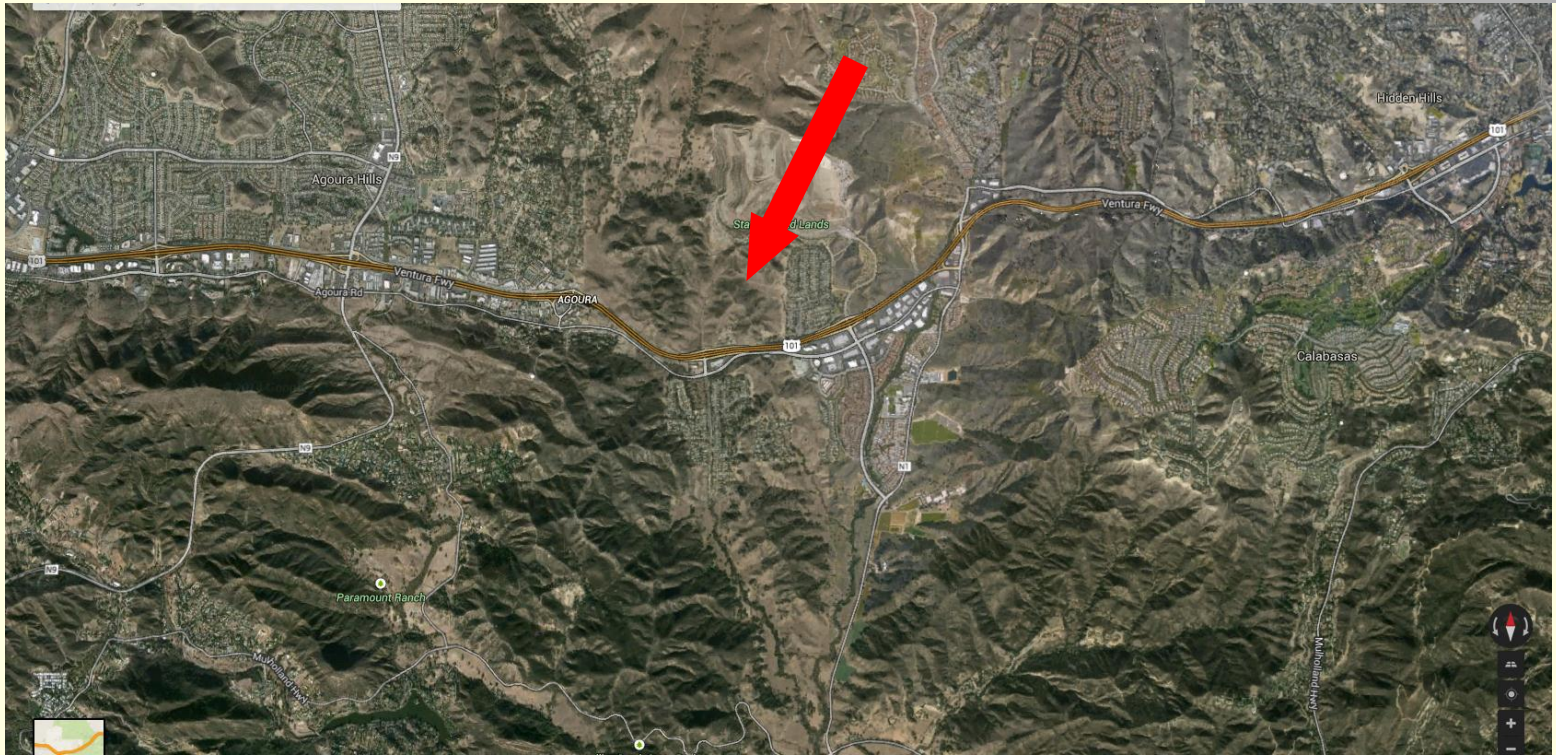


- The Oldar property is situated in the Temecula Creek Watershed habitat area. This habitat area includes one of the largest remaining known quino checkerspot butterfly populations.



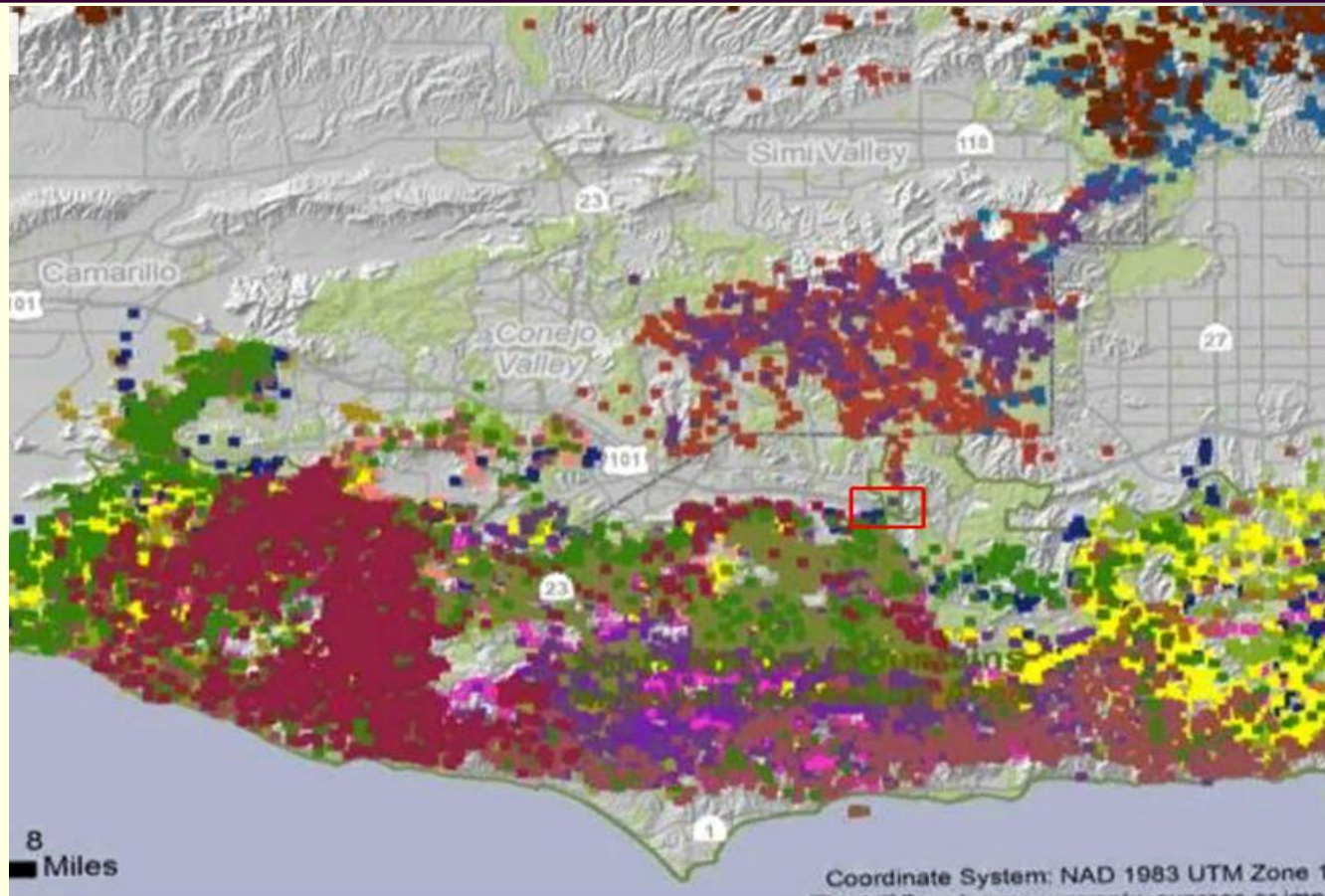
**Liberty Canyon Wildlife Crossing
Los Angeles County**

#23. Liberty Canyon Wildlife Crossing



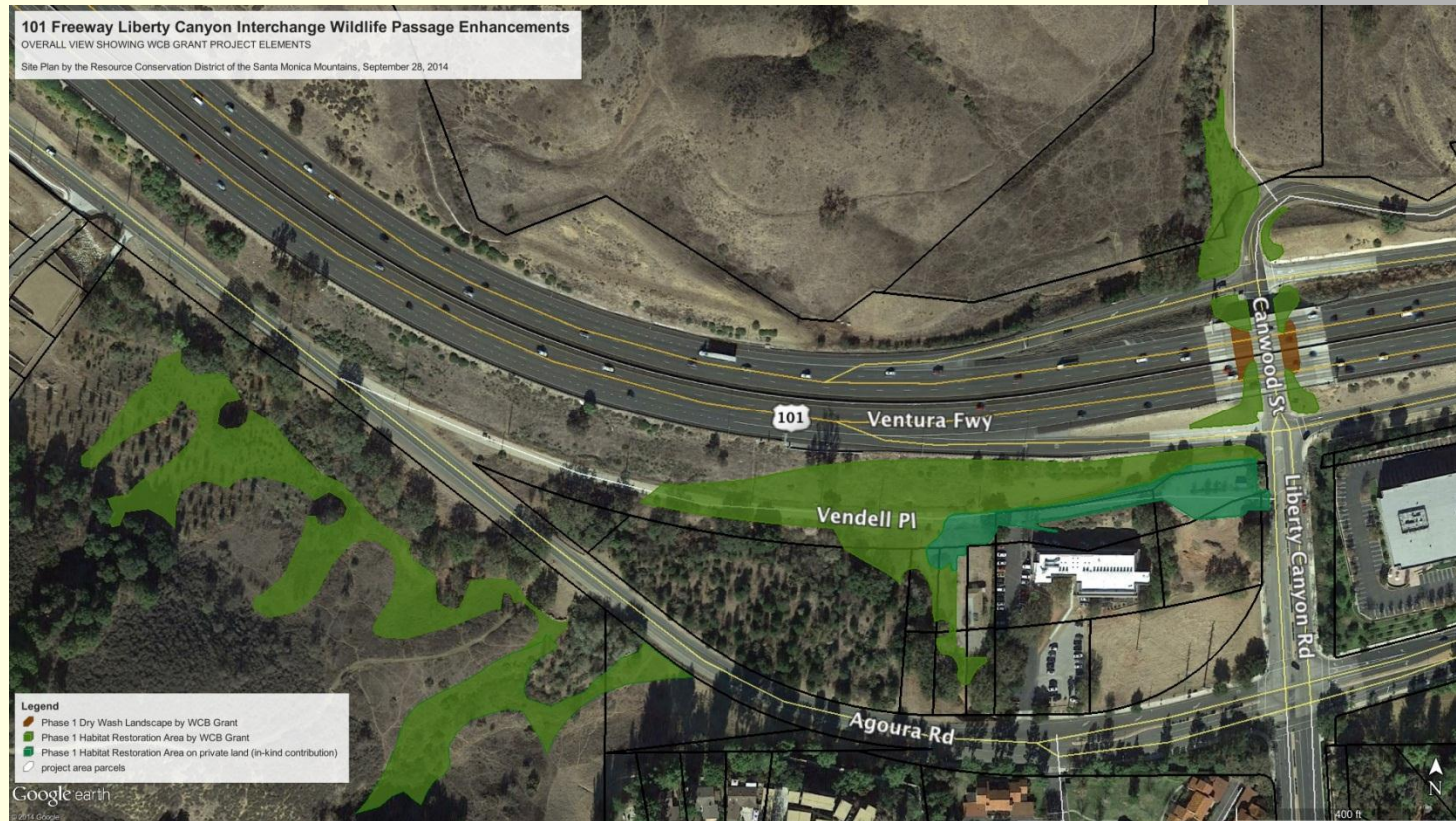
- Liberty Canyon is one of the few coastal inland connections remaining in the South Coast Ecoregion

#23. Liberty Canyon Wildlife Crossing



- National Park Service Mountain Lion GPS data points

#23. Liberty Canyon Wildlife Crossing



- Undercrossing approach habitat restoration areas

#23. Liberty Canyon Wildlife Crossing

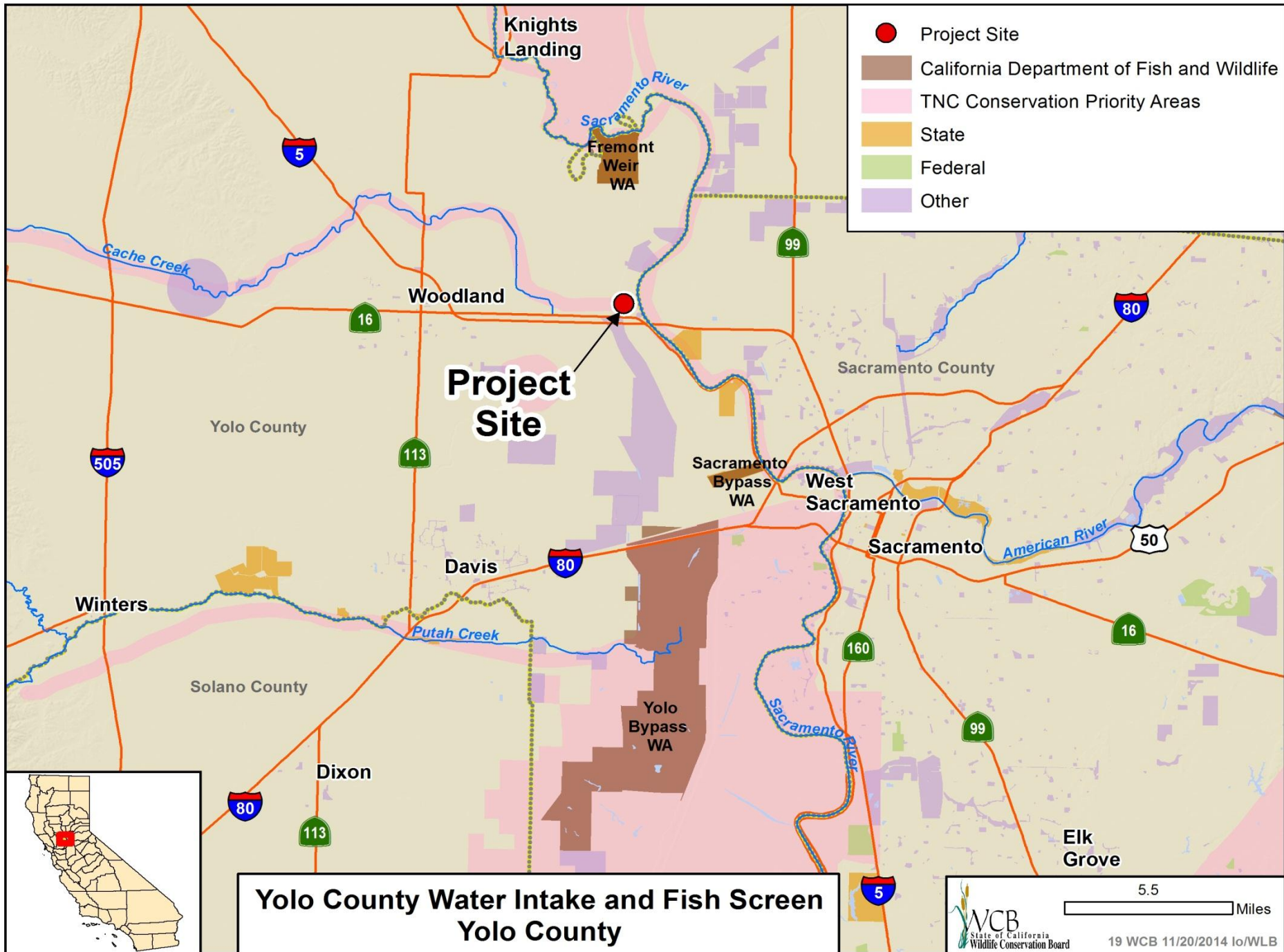


- Fencing to be modified such that it directs animals to the undercrossing

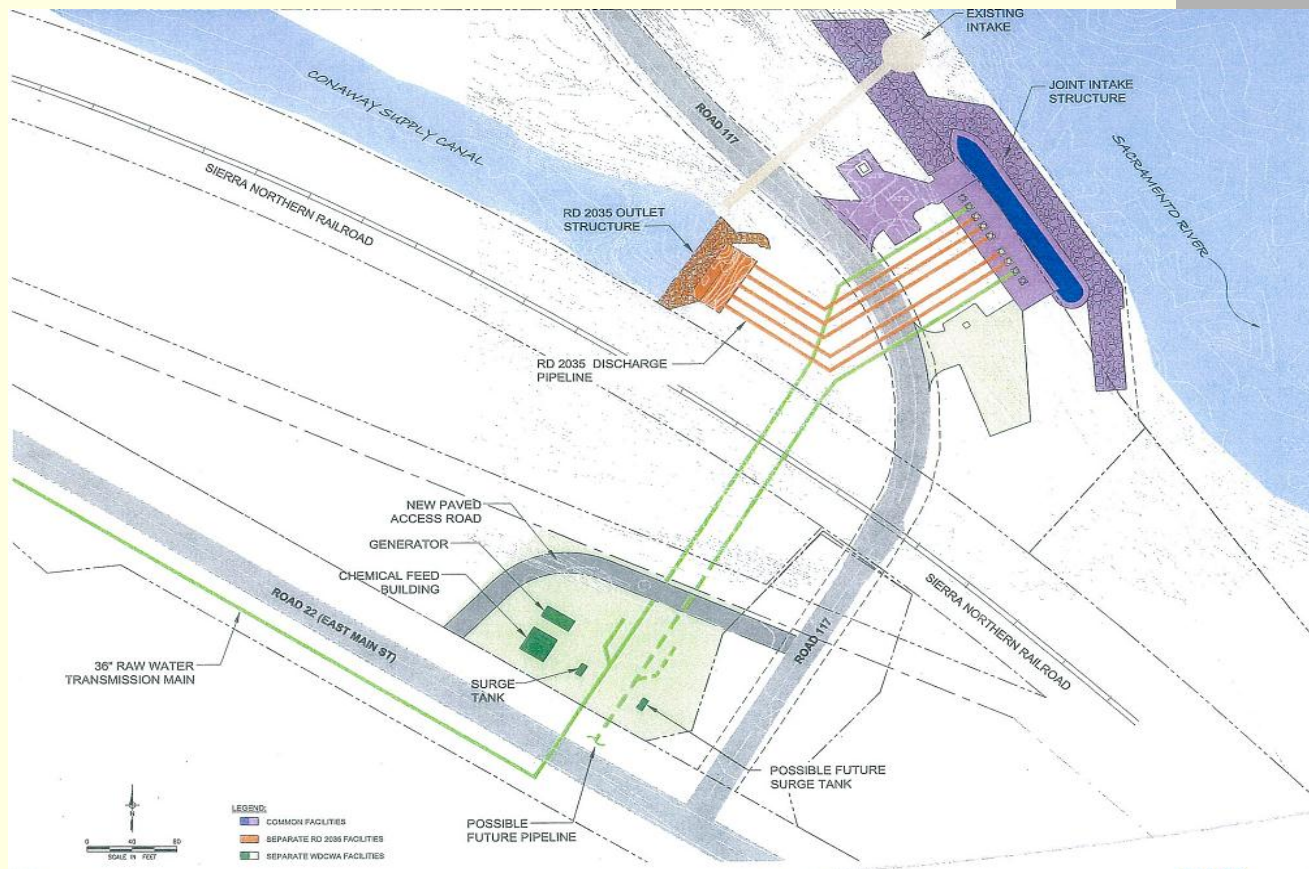
#23. Liberty Canyon Wildlife Crossing



- Liberty Canyon Undercrossing



#19. Yolo County Water Intake and Fish Screen



- Overview of the Water Intake and Fish Screen facility

#19. Yolo County Water Intake and Fish Screen



- Existing water intake in the background. In the foreground is the coffer dam for the Joint Intake Structure.

#19. Yolo County Water Intake and Fish Screen





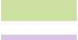



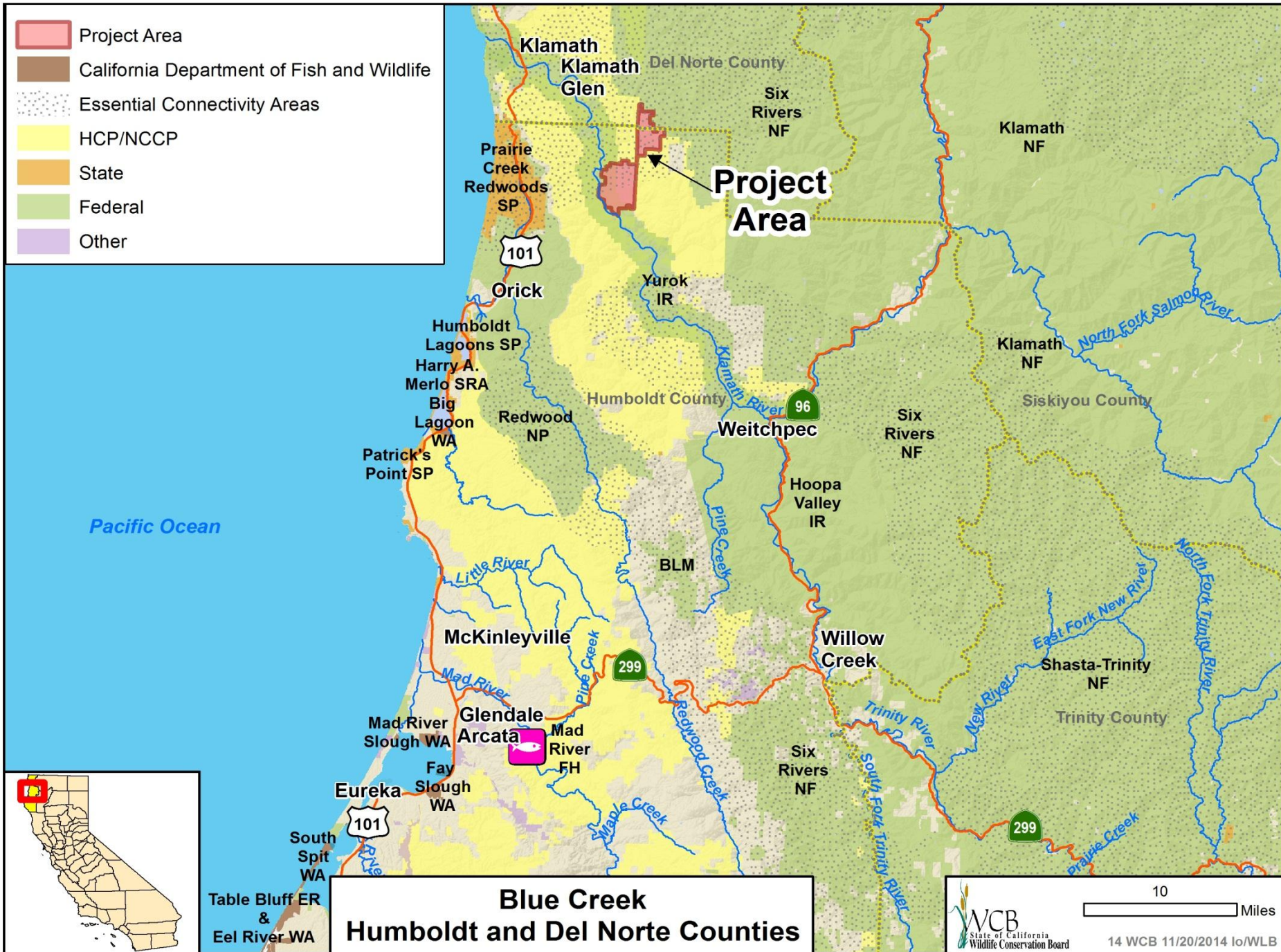
- RD 2035 outlet structure at the mouth of the Conaway Supply Channel

#19. Yolo County Water Intake and Fish Screen

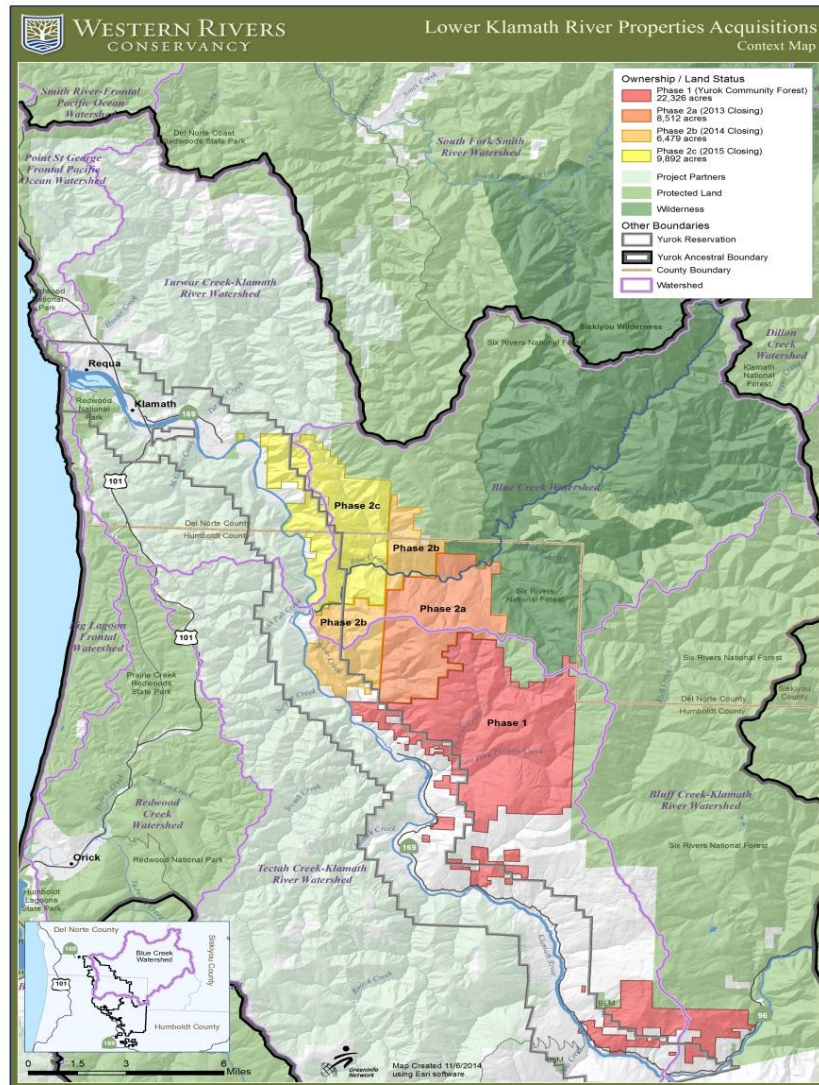


- Sacramento River flowing southwest past the Joint Intake Structure

-  Project Area
-  California Department of Fish and Wildlife
-  Essential Connectivity Areas
-  HCP/NCCP
-  State
-  Federal
-  Other



#14. Blue Creek



- Phase I 22,326 Ac.
- Phase 2a 8,512 Ac.
- Phase 2B 6,479 Ac.
- Phase 2C 9,892 Ac.

#14. Blue Creek



Photo courtesy of Western Rivers Conservancy

- View of Klamath River, Blue Creek, and surrounding forestland

#14. Blue Creek



Photo courtesy of Western Rivers Conservancy

- Blue Creek runs clear and cold from the Siskiyou Wilderness entering the Klamath River 16 miles upstream from the Pacific

#14. Blue Creek



Photo courtesy of Western Rivers Conservancy

- The Blue Pool near the confluence of Blue Creek and the Klamath River is a cold-water refuge for migrating Salmon and Steelhead

#14. Blue Creek



Photo courtesy of Western Rivers Conservancy

- Male Chinook Salmon

#14. Blue Creek



Photo courtesy of Western Rivers Conservancy

- The Blue Pool at the Klamath/Blue Creek confluence, remains ice cold throughout the year

#14. Blue Creek



Photo courtesy of Western Rivers Conservancy

- Mouth of Blue Creek at River Mile 16, about 24 miles below the confluence of the Trinity River

#14. Blue Creek



Photo courtesy of Western Rivers Conservancy

- Overlooking the Klamath River

#14. Blue Creek



Photo courtesy of Western Rivers Conservancy





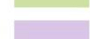
- The acquisition will benefit animals like the marbled murrelet, northern spotted owl, and Humboldt marten (Pictured)

#14. Blue Creek



Photo courtesy of Western Rivers Conservancy

- Overlooking the Klamath River

-  Project Area
-  California Department of Fish and Wildlife
-  State
-  Federal
-  Other



Salt River Wetland Restoration Humboldt County

#15. Salt River Wetland Restoration



- 2011 WCB approved project downstream within the Eel River Wildlife Area immediately after the completion of construction November 2013

#15. Salt River Wetland Restoration



- Eel River Wildlife Area 11 months later, October 2014

#15. Salt River Wetland Restoration



- Salt River active restoration downstream from proposed phase

#15. Salt River Wetland Restoration



- Downstream restoration displaying the main channel on the left and the floodplain to the right

#15. Salt River Wetland Restoration



- Salt River Current Condition

#15. Salt River Wetland Restoration



- A choke point to slow flows and create sediment deposits

#15. Salt River Wetland Restoration



- Alder trees removed during restoration will be installed along the edges to create habitat for cavity nesting birds



#16. Mt. Shasta Headwaters Forest, Hancock
(Town Block)
General Forest

The Strategic Value of Investing in Conservation of California's Klamath-Cascade Region

November 20, 2014
Connie Best
Co-CEO

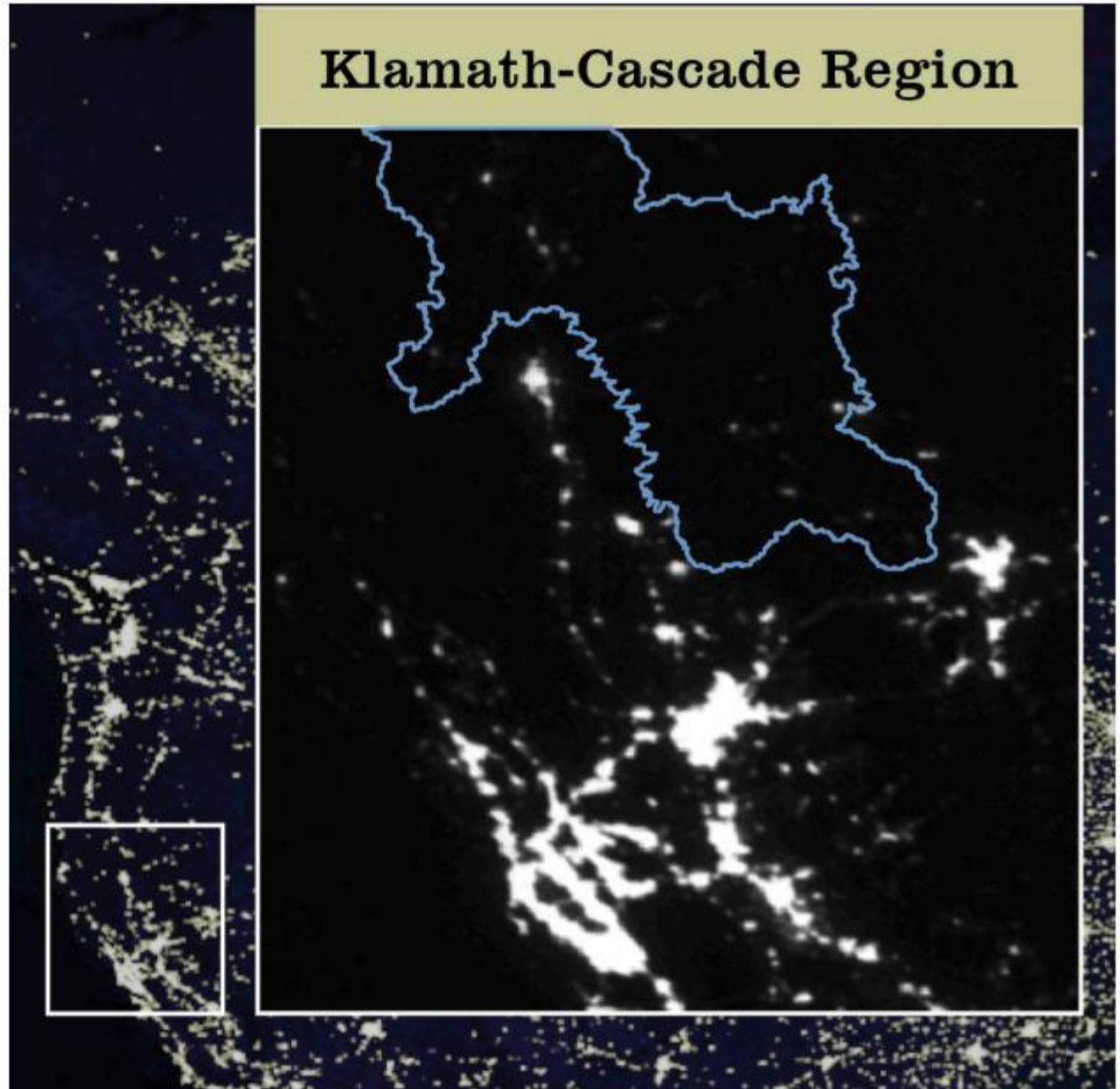


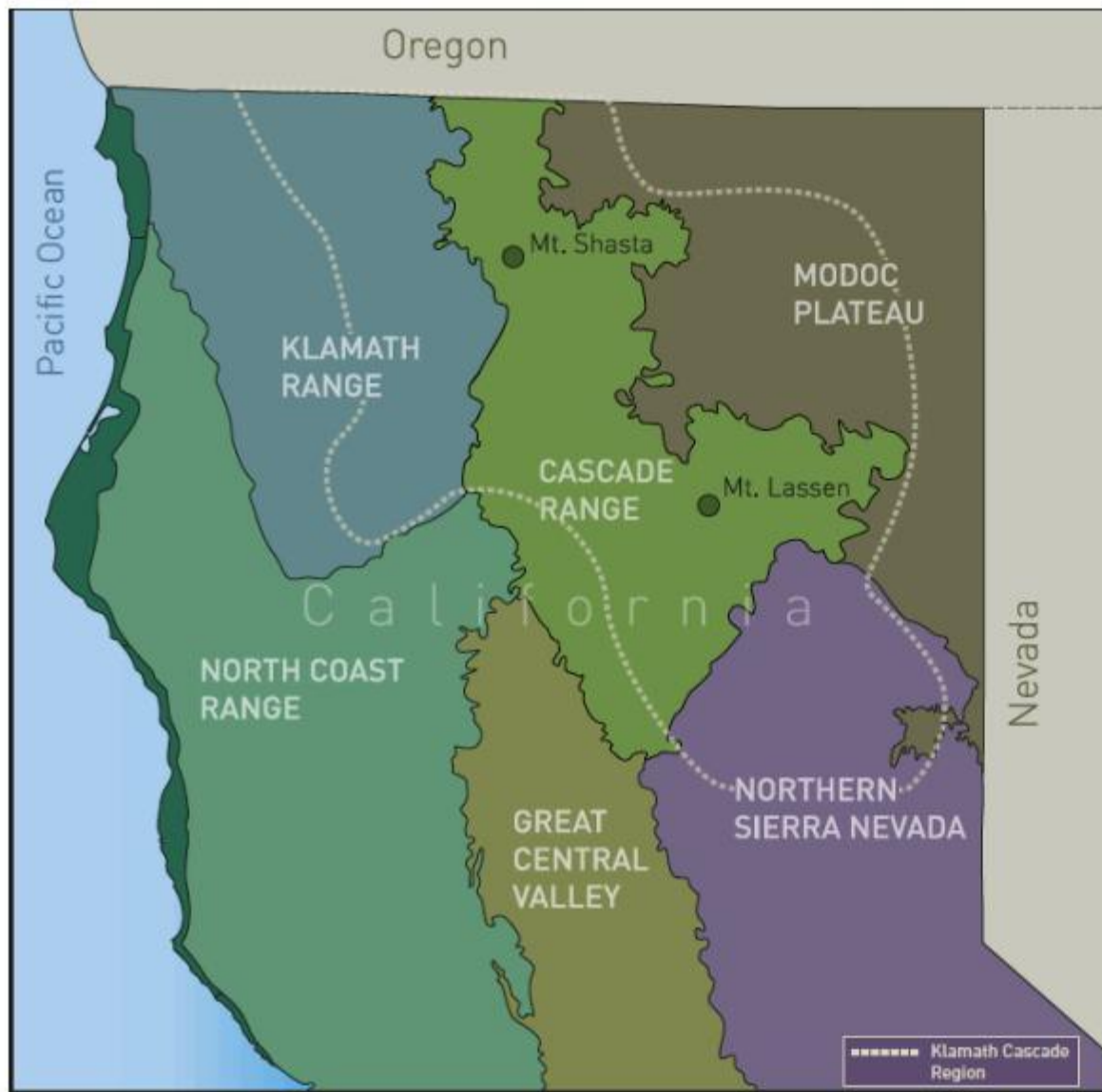
PACIFIC FOREST TRUST

Private Forests. Public Treasures.

**An intact,
inter-
connected
10 million
acre
landscape
of public –
private
lands**

("Lights at Night"
NASA 2001)





Eco-regional
cross-roads for
the north state:
Bridge from the
Sierra Nevada
to the Klamath
and points
north



PACIFIC FOREST TRUST

Private Forests. Public Treasures.

Home to world-class biodiversity



Highly productive confluence of different soils . . . Great elevational differences . . . Diverse aspects . . . Complex landscape forms . . . wide variety of unfragmented habitats
600 species supported . . . 94 imperiled . . .



PACIFIC FOREST TRUST

Private Forests. Public Treasures.

Most biodiverse coniferous forests and heart of state's timber industry



- Primary productivity makes for great biodiversity *and* timber
- *And* huge carbon stores

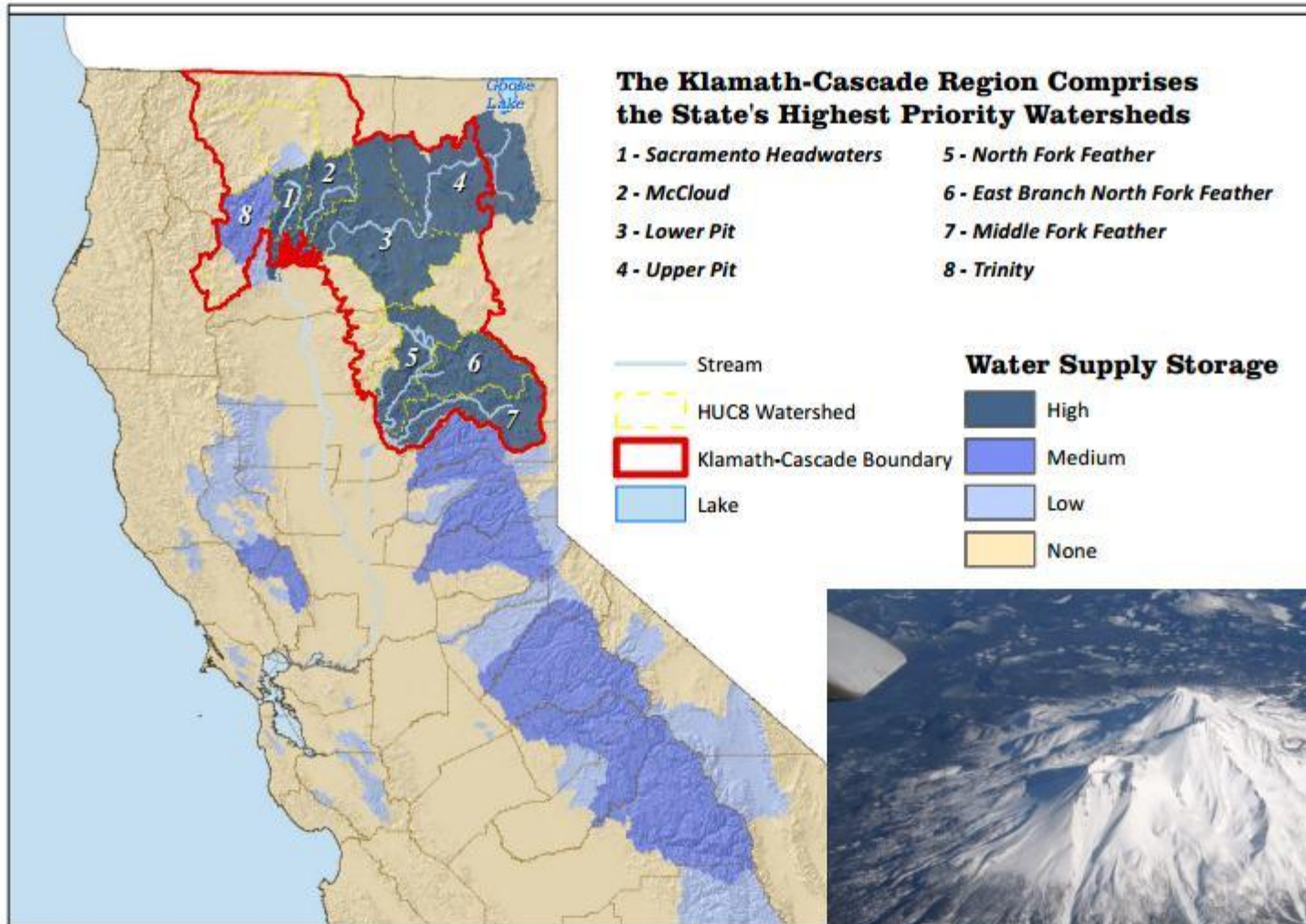
Managing for diversity builds resilience for wood, water and wildlife



PACIFIC FOREST TRUST

Private Forests. Public Treasures.

Source of California's most abundant water

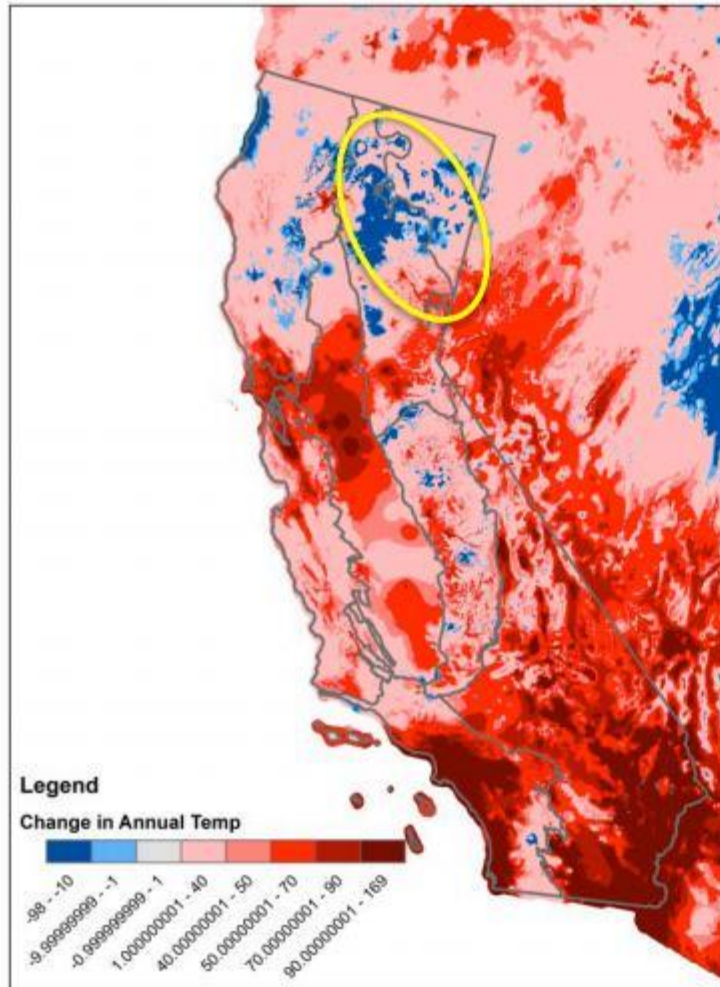


75% of state's precipitation
80 – 85% of flows into Bay Delta

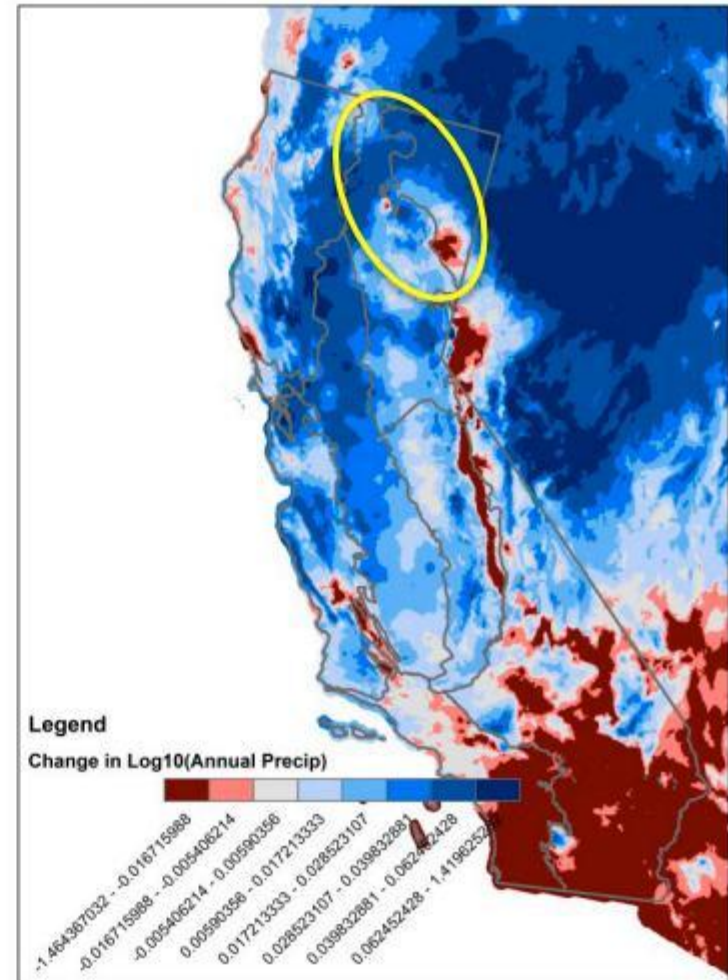


A “best bet” for climate resilience

Δ Annual Temperature



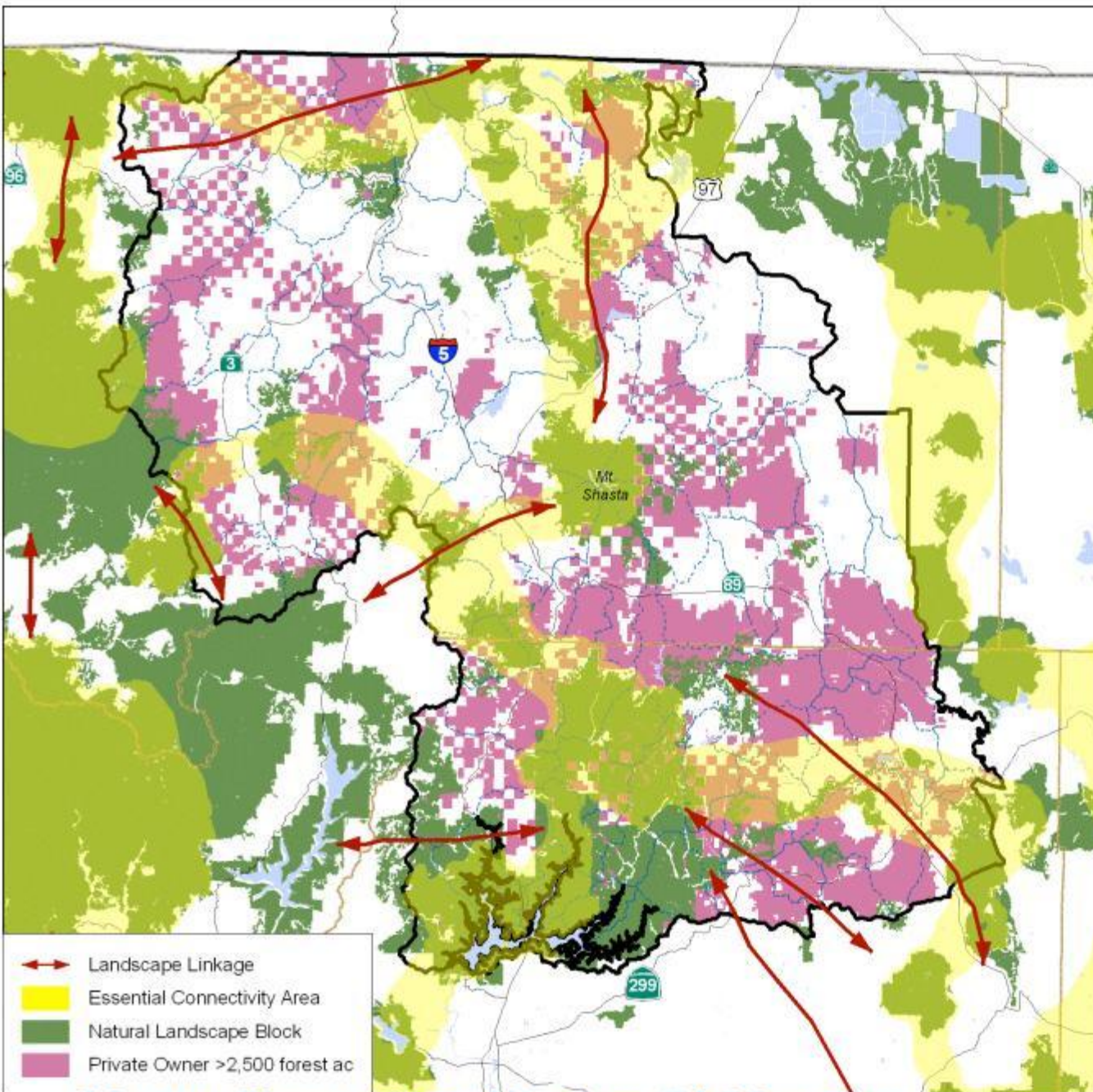
Δ Annual Precipitation



20th Century climate change

Project selection: Location Location Location

Working with
private forest
owners we can
create new
conservation
corridors and
larger
landscape
blocks



Mount Shasta Headwaters CAPP region

Create permanent linkages across public-private ownerships with working forest conservation easements

- Cross-boundary collaboration
- Improve forest health, resilience
- Increase heterogeneity in forest structure, seral stages
- Restore special habitats across and within forest:
 - Wet meadows and springs
 - Aspen groves
 - Oaks and other hardwoods



Klamath-Cascade: A priority landscape



- WCB Strategic Plan - Greenhouse Gas Reductions
- State Water Action Plan - DFW Watershed Restoration
- *Safeguarding California* - Wildlife Action Plan
 - NRCS Critical Conservation Area



#16. Mt. Shasta Headwaters Forest, Hancock (Town Block)



- Looking north at Mt. Shasta

#16. Mt. Shasta Headwaters Forest, Hancock (Town Block)



- Pig Creek bubbles up from a spring on the property

#16. Mt. Shasta Headwaters Forest, Hancock (Town Block)



- An Oak Stand that is part of the Dogwood Butte Special Habitat Management Zone

#16. Mt. Shasta Headwaters Forest, Hancock (Town Block)



- General forest shot near the Trail Creek Special Habitat Management Zone

#16. Mt. Shasta Headwaters Forest, Hancock (Town Block)



- A seasonally wet meadow within the Trail Creek Special Habitat Management Zone



Barry Point Fire Forest Restoration Modoc County

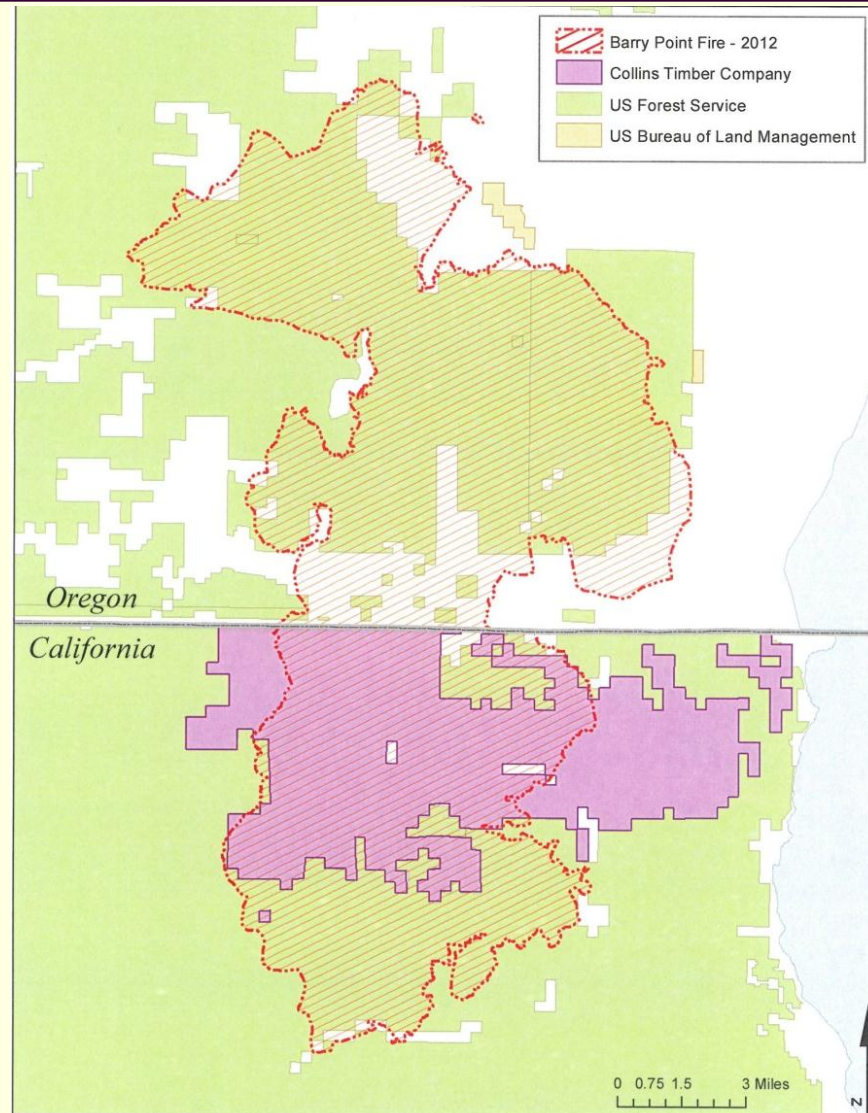


#17. Barry Point Fire Forest Restoration



- Barry Point Fire 2012

#17. Barry Point Fire Forest Restoration



■ Map of Barry Point Fire 2012

#17. Barry Point Fire Forest Restoration



- Charred landscape resulting from Barry Point Fire

#17. Barry Point Fire Forest Restoration



- Dead trees were removed, snags for habitat and future down woody debris recruitment remain

#17. Barry Point Fire Forest Restoration



- Riparian Area

#17. Barry Point Fire Forest Restoration



- Unburned forest eastern side on the Collin's Property

#17. Barry Point Fire Forest Restoration



■ Rocky Mountain Elk

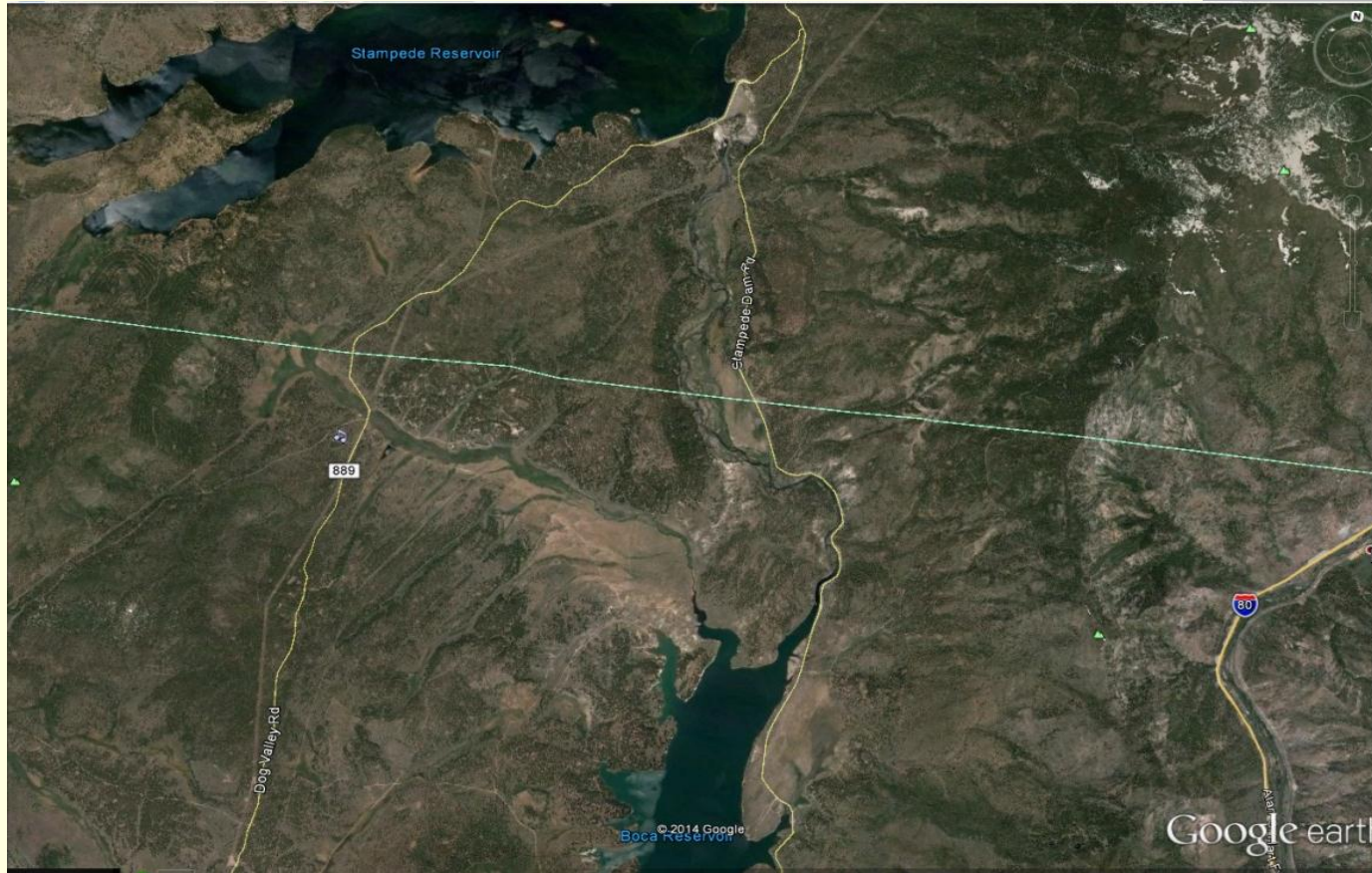
#17. Barry Point Fire Forest Restoration



- A meadow on the northwestern boundary of the property

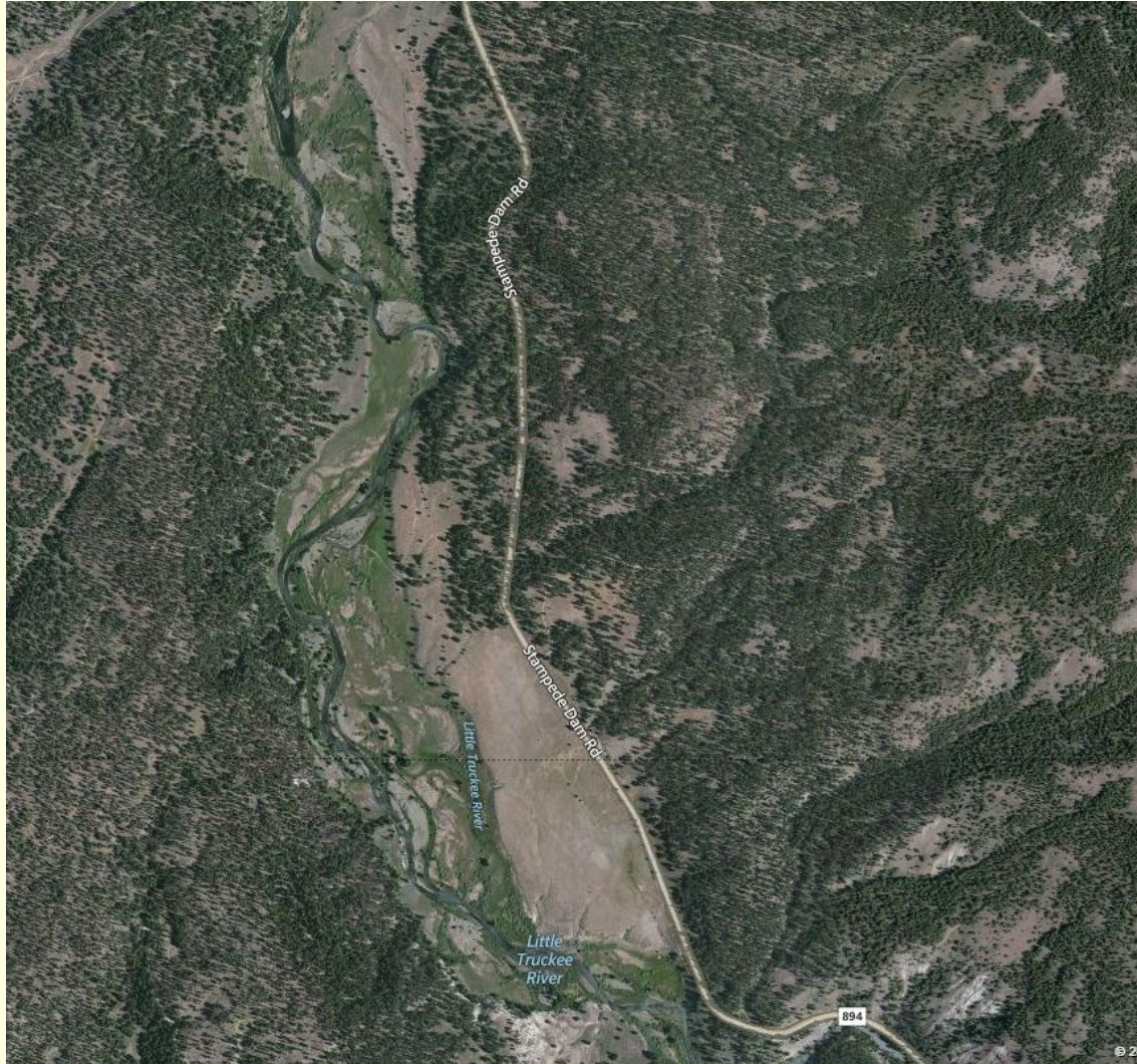


#18. Little Truckee River Fish Habitat Restoration



- Little Truckee River between Stampede Reservoir and Boca Reservoir

#18. Little Truckee River Fish Habitat Restoration



- A closer look at the project area

#18. Little Truckee River Fish Habitat Restoration



- Looking towards the southeast along the Little Truckee River

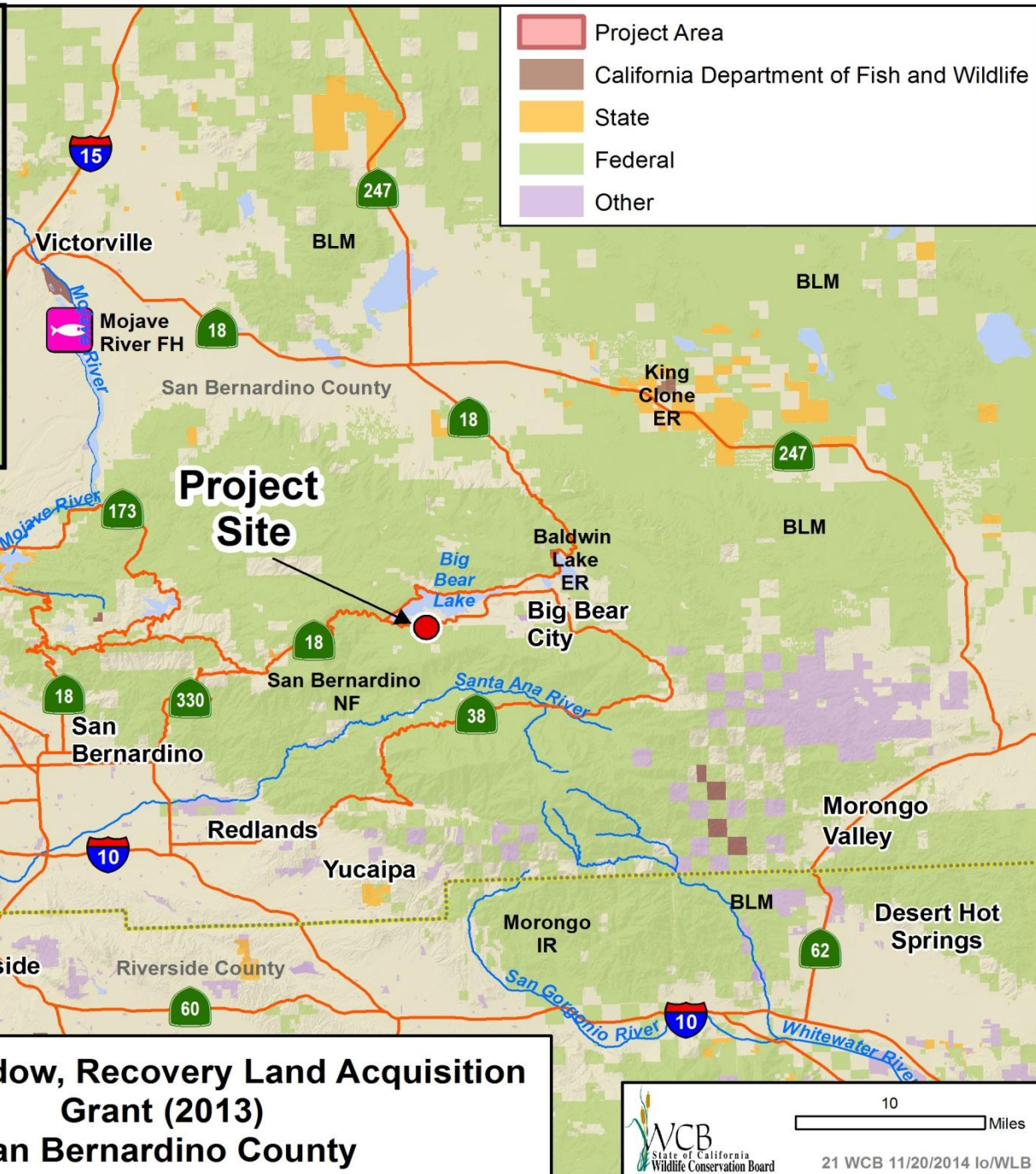
#18. Little Truckee River Fish Habitat Restoration



- Looking up stream towards the north

#20. San Joaquin River Parkway, Ball Ranch (Quarry Site)

- This Item was withdrawn from consideration at this time.



Metcalf Meadow, Recovery Land Acquisition Grant (2013) **San Bernardino County**

#21. Metcalf Meadow



- Metcalf Meadow, home to pedate checker-mallow, a multi-stemmed perennial herb.

#21. Metcalf Meadow



■ Pedate checker-mallow

#21. Metcalf Meadow



- Riparian corridor of Metcalf Creek

#21. Metcalf Meadow

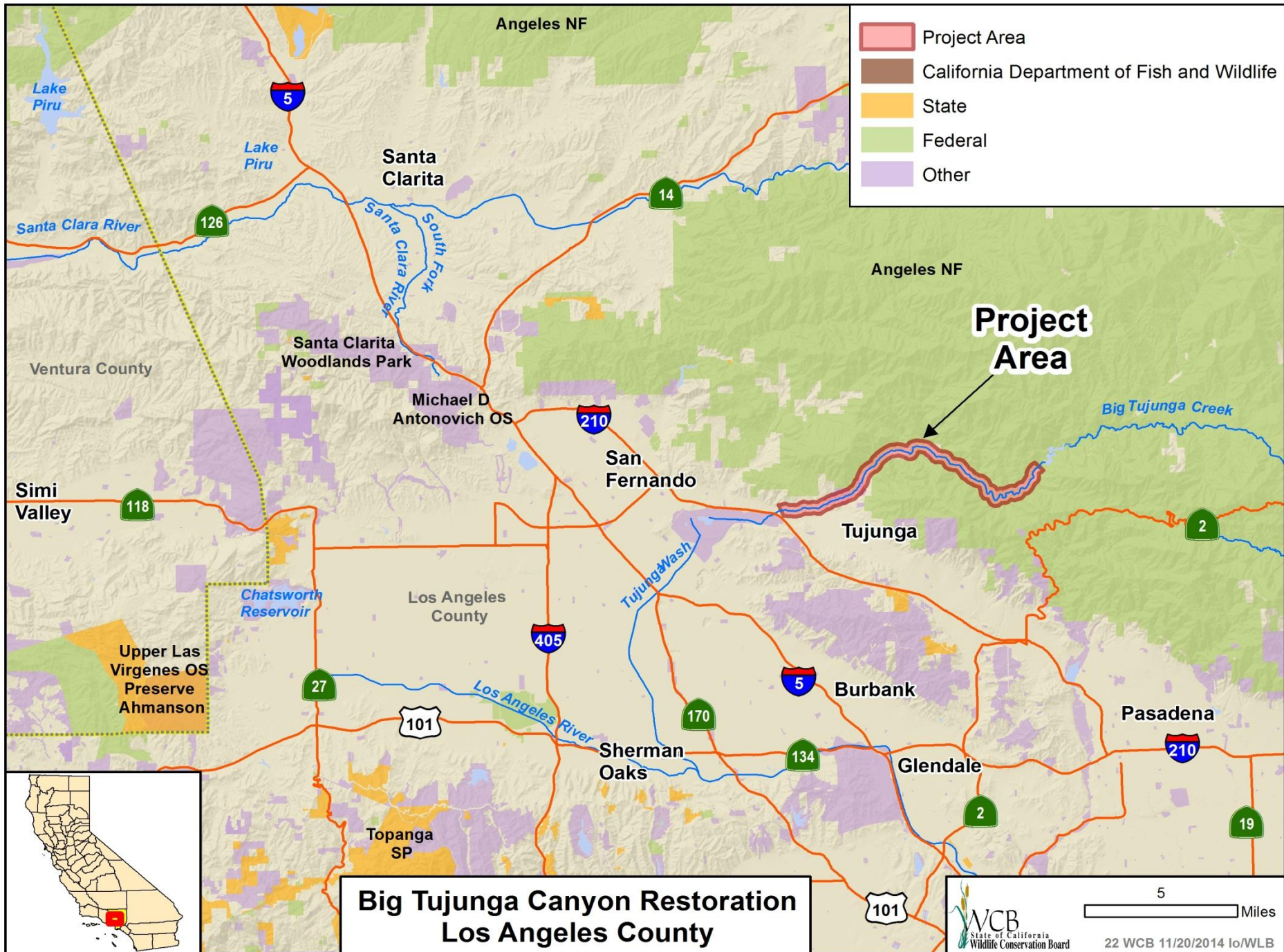


- Habitat for southwestern willow flycatcher

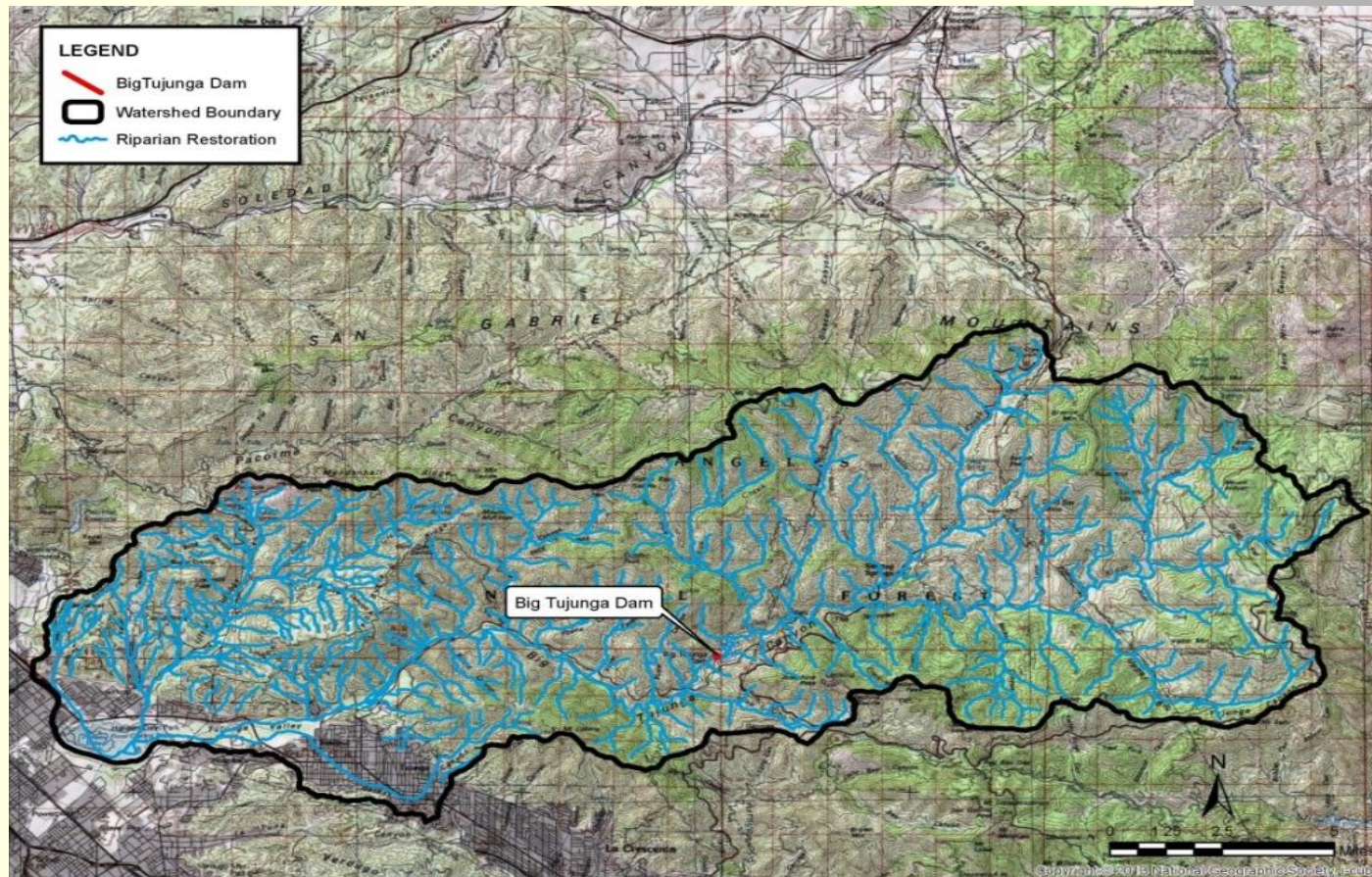
#21. Metcalf Meadow



- Cellular tower and building on property



#22. Big Tujunga Canyon Restoration



- Big Tujunga Watershed

#22. Big Tujunga Canyon Restoration



- Big Tujunga Canyon Riparian Corridor

#22. Big Tujunga Canyon Restoration



- Chaparral vegetation along the canyon slopes

#22. Big Tujunga Canyon Restoration

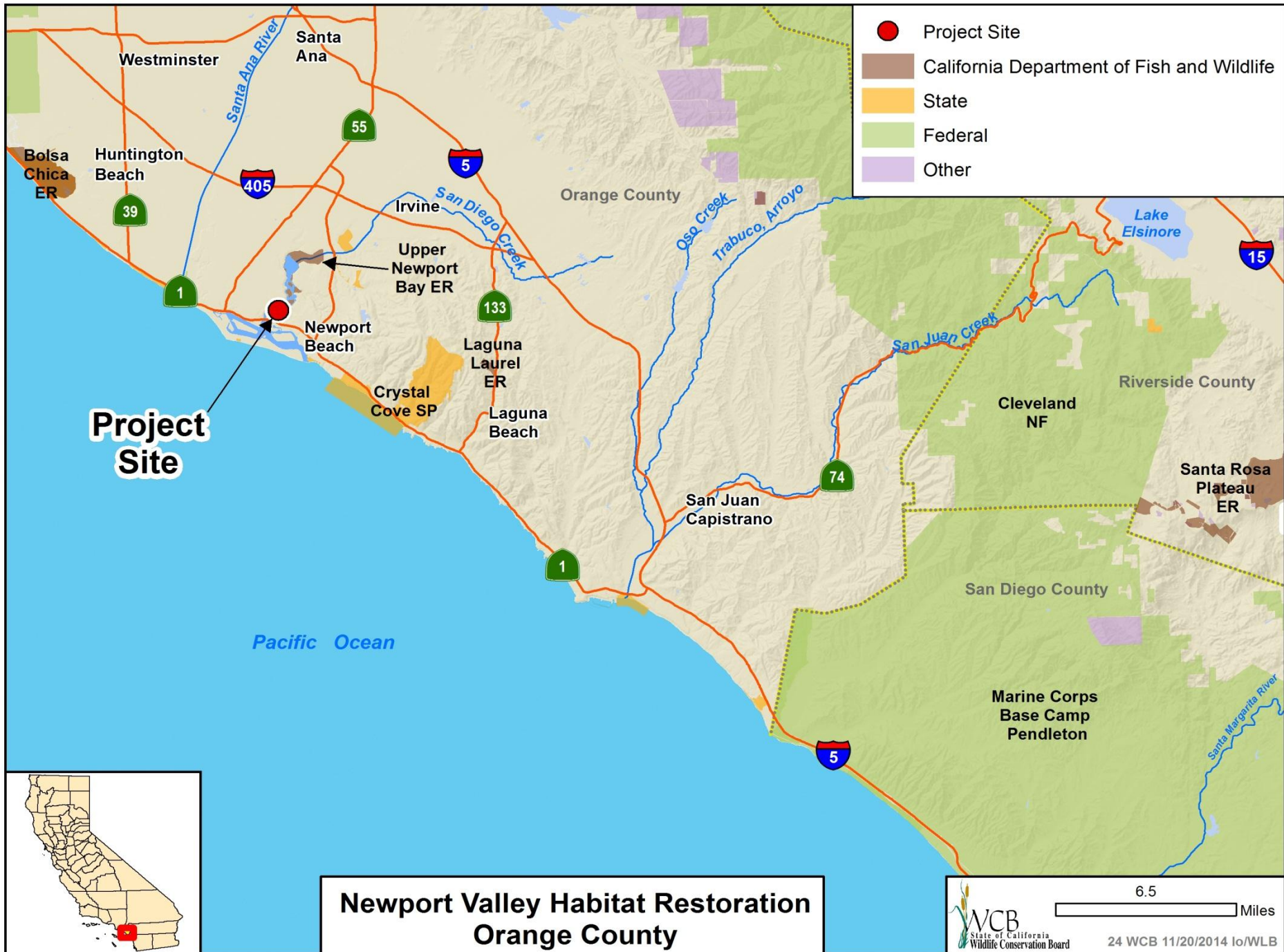


- Arroyo Toad habitat

#22. Big Tujunga Canyon Restoration



- Charred forest at Charleston Flat



#24. Newport Valley Habitat Restoration



- Newport Valley and Upper Newport Bay

#24. Newport Valley Habitat Restoration



- Newport Valley site: Coastal sage scrub, freshwater marsh, and riparian zones.

#24. Newport Valley Habitat Restoration



Photo courtesy of Community-Based Restoration & Education Program

- Community-based Restoration and Education Program
- Volunteers remove weeds and install native plants onsite.

#24. Newport Valley Habitat Restoration



- Propagation of native species at onsite native plant nursery

#24. Newport Valley Habitat Restoration



Photo courtesy of Community-Based
Restoration & Education Program

- Volunteers remove invasive weeds onsite

#24. Newport Valley Habitat Restoration



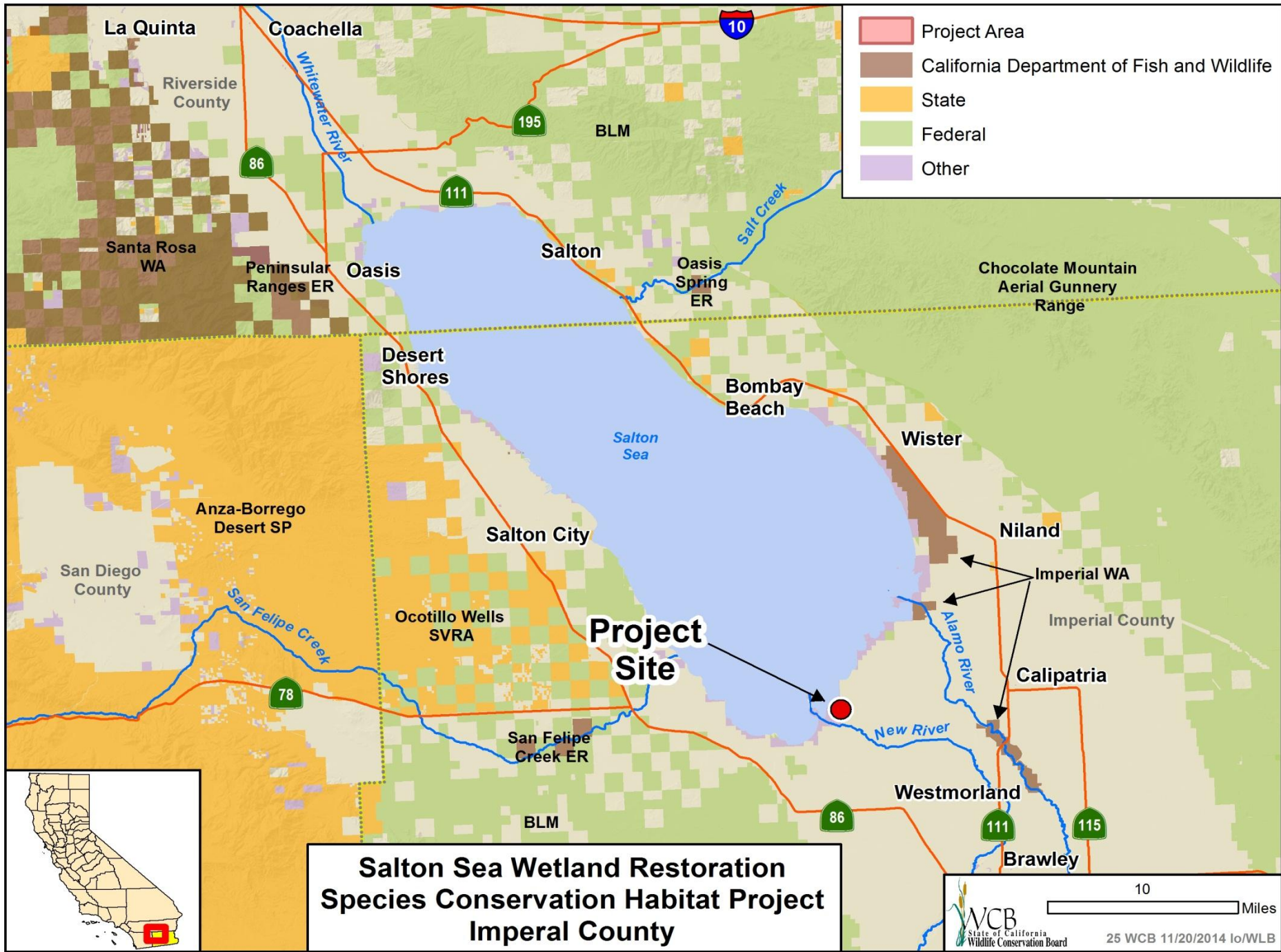
- Coastal California Gnatcatcher – nesting onsite
Federally listed Threatened species

#24. Newport Valley Habitat Restoration



Photo courtesy of Community-Based
Restoration & Education Program

- Volunteer-based restoration and education



#25. Salton Sea Wetland Restoration Species Conservation Habitat Project



- The Salton Sea Species Conservation Habitat Project EIS/R (NOD May 2014)

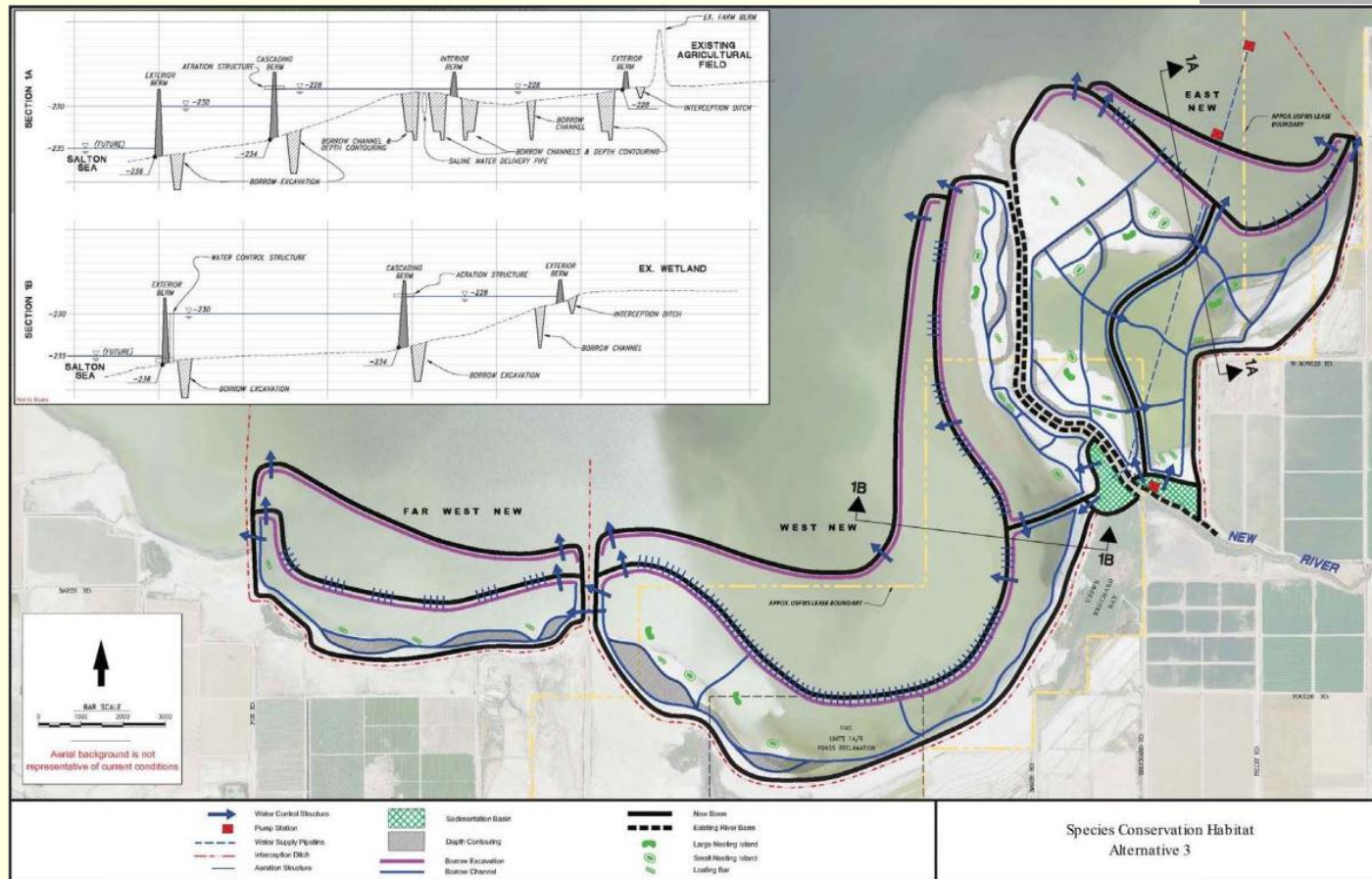
U.S. Army Corps of Engineers Application No. SPL-2010-00142-LLC
State Clearinghouse No. 2010061062

August 2011



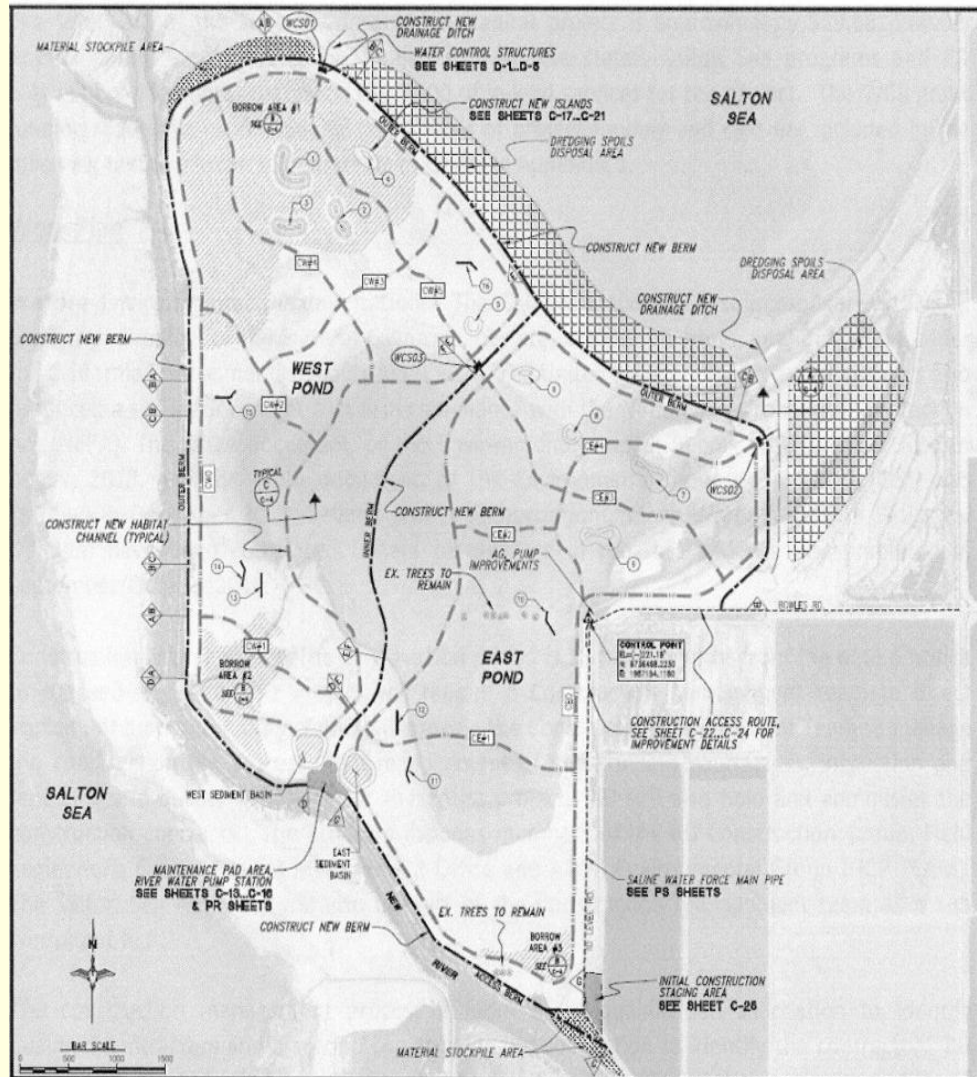
PREPARED FOR
The California Natural Resources Agency by the Department of Water Resources and
Department of Fish and Game

#25. Salton Sea Wetland Restoration Species Conservation Habitat Project



- Species Conservation Habitat Project, Alternative Three

#25. Salton Sea Wetland Restoration Species Conservation Habitat Project



- Project Design, Earthen berms and shallow ponds filled with mixed water from Salton Sea and New River to maintain selected salinity levels.

#25. Salton Sea Wetland Restoration Species Conservation Habitat Project



- Project area consists of an exposed shoreline playa

#25. Salton Sea Wetland Restoration Species Conservation Habitat Project



- Shallow habitat at the site

#25. Salton Sea Wetland Restoration Species Conservation Habitat Project



- An existing nest tree for cormorants, a fish-eating bird



State Wildlife Action Plan 2015 Update

Briefing to the
Wildlife Conservation Board
November 20, 2014

Armand Gonzales, Project Lead

What is SWAP?

- Required by US Fish and Wildlife Service in order to receive federal wildlife funds
- Core program to prevent endangered species listings and to keep common species common
- Key to implementing proactive, non-regulatory, incentive based solutions between conservationists, tribes, private landowners, and communities
- Will inform future strategic planning efforts and helps establishes priorities for conservation in California

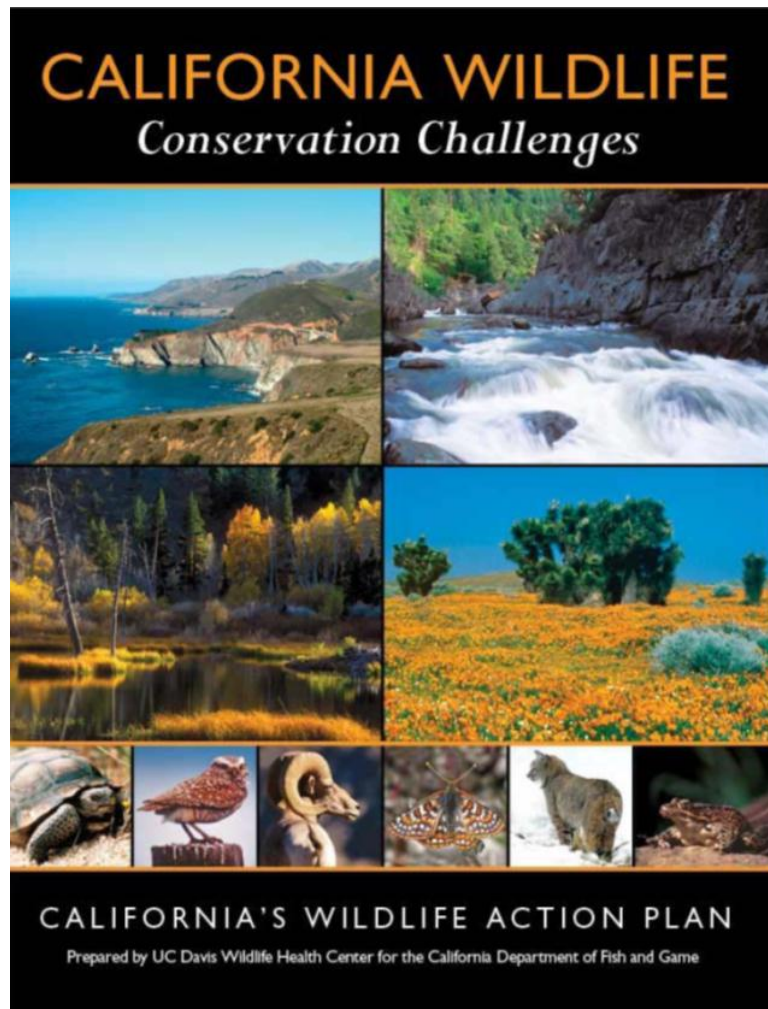
Elements 1-4

1. Information on the **distribution and abundance** of wildlife, including low and declining populations, that describes the diversity and health of the state's wildlife.
2. Descriptions of **locations and relative conditions** of habitats essential to species in need of conservation.
3. Descriptions of **problems that may adversely affect species** or their habitats, and priority research and survey efforts.
4. Descriptions of **conservation actions** proposed to conserve the identified species and habitats.

Elements 5-8

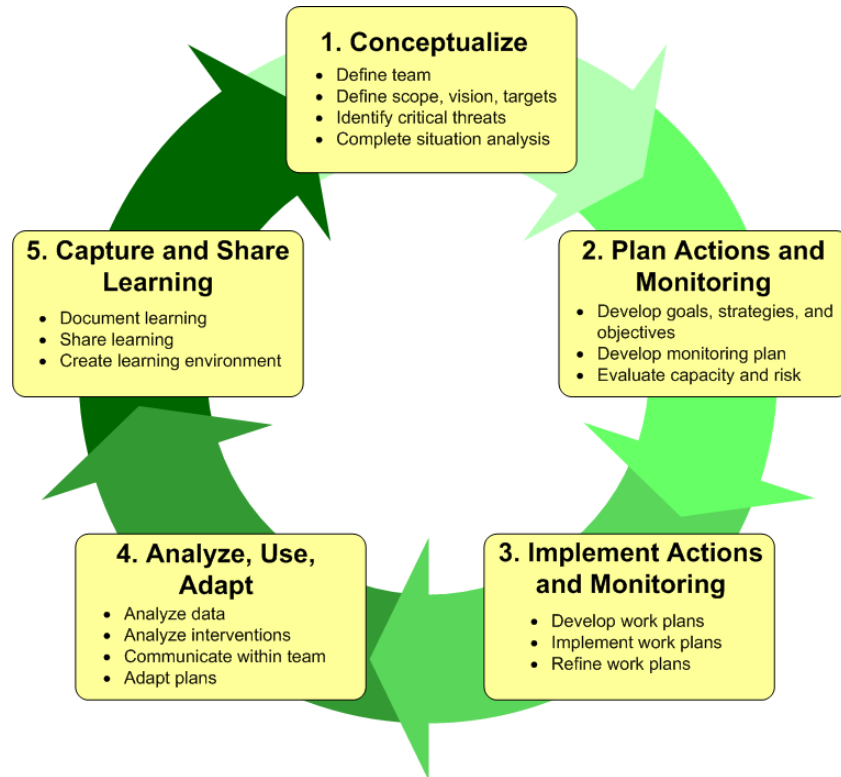
5. **Plans for monitoring species and habitats**, and plans for monitoring the effectiveness of the conservation actions and for adapting these conservation actions to respond to new information.
6. Descriptions of procedures to **review the plan** at intervals not to exceed 10 years.
7. **Coordination** with federal, state, and local agencies and Indian tribes in developing and implementing the wildlife action plan.
8. **Broad public participation** in developing and implementing the wildlife action plan.

SWAP 2005



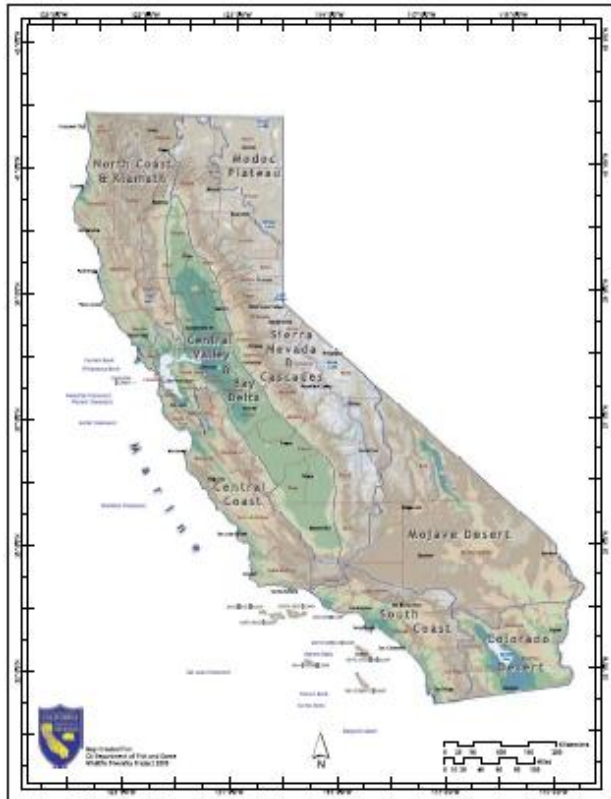
How will We Develop the Plan?

Using a planning framework that is transparent



How will We Develop the Plan?

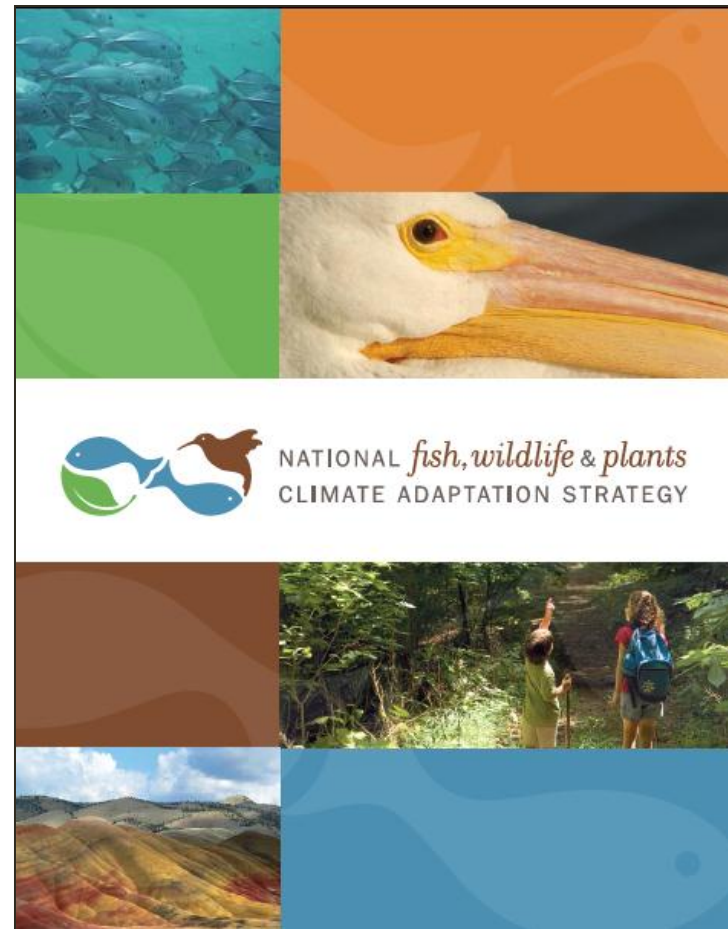
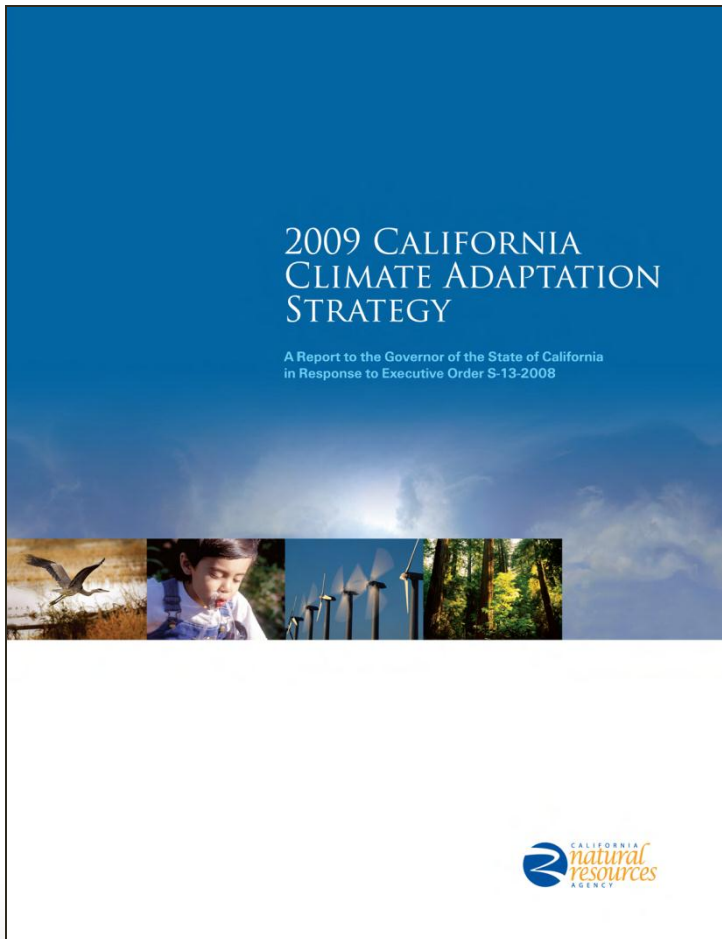
Using Conservation Units



California Department of Fish and Wildlife Habitat Conservation Planning Branch, D.Mastali, 20140602
Data Sources: HUC from National Hydrography Dataset, Ecoregions from USDA Forest Service, Marine Conservation Units and SF Bay unit from California Department of Fish and Wildlife. Hillshade Background: ESRI (copyright 2013)

How will We Develop the Plan?

Integrating Climate Change



How will We Develop the Plan?

Including Plants



How will We Develop the Plan?

Coordinating Actions

- WCB Strategic Plan 2014
- State Water Plan 2013
- Forest and Rangeland Assessment 2010
- California Transportation Plan
- California State Parks Strategic Action Plan
- Forest Plans (USFS) using new Forest Planning Rule
- Ecoregional Assessments (BLM)
- Strategic Habitat Conservation (FWS)



What are Conservation Targets?



- Habitat or ecosystem
- Species Assemblage

What are Stresses and Threats?

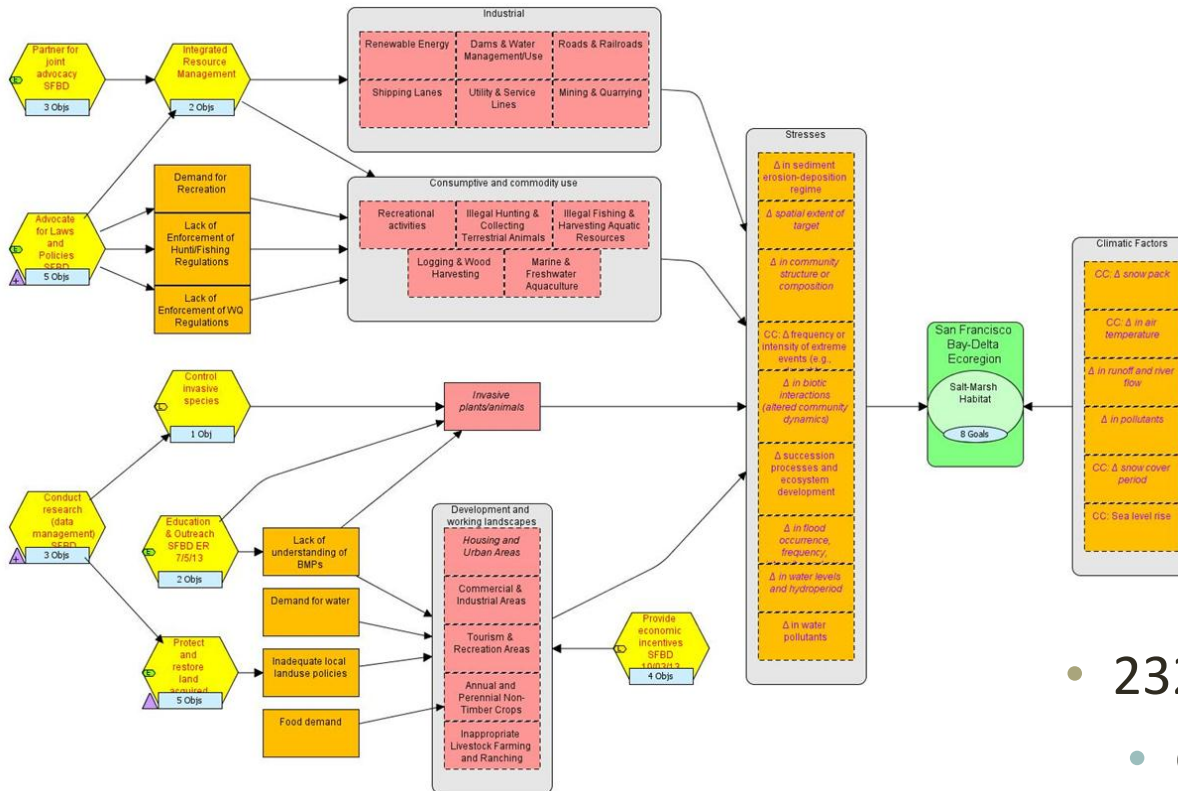


Drought, flood, fire,
blizzard, hurricane,
extreme events



Inappropriate or
incompatible activities,
pollution, conversion,
fragmentation

Workshop Summaries



- 140 staff
- 15 agencies/organizations
- 50 Conservation projects

- 232 Strategies
 - Goals
 - Objectives
 - Actions
 - Indicators
 - Monitoring

Strategy themes

- Grazing practices
- Water conservation and management
- Manage invasive species
- Acquisition and easements
- Education and Outreach
- Economic incentives
- Management partnerships and coordination
- Conservation plans
- Data gathering
- Law enforcement
- Advocate for laws and policies

How will We Develop the Plan?

Web Based

The screenshot shows a web browser window displaying the California State Wildlife Action Plan (SWAP) website. The browser's address bar shows the URL <http://www.dfg.ca.gov/SWAP/>. The website's header includes a navigation bar with links like Home, State Wildlife Action Plan, and a search bar. The main content area features a large banner with the title "State Wildlife Action Plan: A plan for conserving California's wildlife resources while responding to environmental challenges" and a row of six images: a bird, a mountain goat, a rattlesnake, yellow flowers, a bear, and a butterfly. Below the banner, the "Overview" section describes California's diverse habitats and the need for conservation. The "State Wildlife Action Plan (SWAP)" section explains the plan's purpose. A sidebar on the right contains links to Timeline, Meetings, News Archive, and Contact, along with a sign-up form for SWAP News. The bottom of the browser window shows the Windows taskbar with various application icons and the system clock indicating 7:40 PM on 10/1/2013.

http://www.dfg.ca.gov/SWAP/

File Edit View Favorites Tools Help

CDFG California Wildlife Action ... Desert Landscape Conserv... Google Welcome to Net Confer...

Home » State Wildlife Action Plan

State Wildlife Action Plan: A plan for conserving California's wildlife resources while responding to environmental challenges

Overview

California's distinctive topography and climate have given rise to a remarkable diversity of habitats that support a multitude of plant and animal species. In fact, California has more species than any other state in the U.S. and also has the greatest number of species that occur nowhere else in the world. Many of the places where wildlife thrive are the same as those valued for recreation and other human activities. To ensure a sustainable future for wildlife – and the enjoyment of wildlife by generations to come – there is a need for a collaborative approach to conservation.

State Wildlife Action Plan (SWAP)

The State Wildlife Action Plan examines the health of wildlife and prescribes actions to conserve wildlife and vital habitat before they become more rare and more costly to protect. The plan also promotes wildlife conservation while furthering responsible development and addressing the needs of a growing human population.

» [2005 California Wildlife Action Plan](#)

ANNOUNCEMENT: SCOPING MEETINGS (PDF)

2015 Update Process

As required every 10 years by the U.S. Fish and Wildlife Service, CDFW is in the process of updating the 2005 plan. The update process will allow CDFW to integrate new information and leverage more funding. The objectives for the update include:

- Create a vision for fish and wildlife conservation in California,
- Provide an accounting of accomplishments,
- Stratify analysis of impacts and stressors by ecoregions,
- Incorporate climate change impacts and adaptation strategies,
- Update species at risk, vulnerable species and species of greatest conservation need, and
- Recommend conservation actions consistent with planning documents developed by other agencies.

SWAP
California State Wildlife Action Plan

Timeline

Meetings

News Archive

Contact

Sign up for SWAP News

Your email address:

Privacy by SafeSubscribeSM

100%

7:40 PM
10/1/2013

Companion Plans

- Agriculture
- Consumptive & Recreational Uses
- Energy Development
- Forests & Rangelands
- Land Use Planning
- Marine Environment
- Transportation Planning
- Tribal Lands
- Water Management



Project Schedule/Next Steps

California State Wildlife Action Plan Update 2015

Task Name	Start Date	End Date	2013				2014				2015				2016				2017			
			Q1	Q2	Q3	Q4	Q1	Q2	Q3	Q4	Q1	Q2	Q3	Q4	Q1	Q2	Q3	Q4	Q1	Q2	Q3	Q4
⊕ Grants	01/02/12	12/31/15													Grants							
⊕ Contracts	01/02/12	02/27/15												Contracts								
⊕ Training	03/01/12	01/18/13												Training								
⊕ Data Development	01/02/12	12/31/12												Data Development								
⊕ Ecoregional Team Development	03/01/12	10/15/12																				
⊕ Target Criteria	05/01/12	01/15/13												Target Criteria								
⊕ Threats and Stressors	04/29/12	01/31/13												Threats and Stressors								
⊕ Ecoregional Workshops	12/10/12	07/26/13												Ecoregional Workshops								
⊕ Data Compilation	12/03/12	04/30/13												Data Compilation								
Statewide Strategies	08/01/13	11/18/13												Statewide Strategies								
⊕ Conservation Strategies	03/04/13	06/30/14												Conservation Strategies								
Climate Vulnerability Study	08/01/14	07/01/15												Climate Vulnerability Study								
⊕ Public Scoping I	10/01/13	11/27/13												Public Scoping I								
Public Review I	01/01/14	02/03/14												Public Review I								
Public Review II	06/01/15	07/01/15												Public Review II								
Public Review-Companion Plans	06/01/15	07/01/15												Public Review-Companion Plans								
Submit draft to USFWS	07/30/15	07/31/15												Submit draft to USFWS								
⊕ Plan Development	03/28/14	07/01/15												Plan Development								
Public Outreach	08/01/12	07/30/15												Public Outreach								
⊕ Companion Plans	07/01/14	07/01/15												Companion Plans								
Partnerships and Implementation	07/05/15	06/30/16												Partnerships and Implementation								
⊕ Oversight	01/01/12	06/30/16												Oversight								
⊕ Stakeholder Committee Meetings (Schedule quarterly or as needed)	07/01/13	08/02/13												Stakeholder Committee Meetings (Schedule quarterly or as needed)								

More Information

- Via email: SWAP@wildlife.ca.gov

- Via Mail: Armand Gonzales

California Department of Fish and Wildlife
1416 Ninth Street, Suite 1341-B
Sacramento, CA 95814

SWAP Website: www.dfg.ca.gov/SWAP