

What is a California marine protected area (or “MPA”)?

An MPA is a type of managed area whose main purpose is to protect or conserve marine life and habitats in ocean or estuarine waters. California's MPA Network consists of 124 areas with varying levels of protection and 14 special closures, all designed to help safeguard the state's marine ecosystems. Most marine conservation areas such as Point Arena State Marine Conservation Area provide some opportunity for commercial and/or recreational take (species and gear exceptions vary by location - see reverse).

One goal for California's MPAs was to strategically place them near each other to form an interconnected network that would help to preserve the flow of life between marine ecosystems. Within that network each MPA has unique goals and regulations, and non-consumptive activities, permitted scientific research, monitoring, and educational pursuits may be allowed.

Why was this location chosen for a state marine conservation area?

One of the goals for Point Arena State Marine Conservation Area is to protect diverse habitat including sheer walls, pinnacles, rocky reef, and large swaths of sand. Point Arena's strong upwelling brings cold, nutrient-rich water from the depths to the surface, making these waters highly productive. Rocky reefs offer vital habitat for sponges and anemones, while mobile invertebrates like red sea urchins, abalone, and sea cucumbers hide in crevices. Schools of rockfish are also drawn to the reef, while lingcod lie in wait among the rocks to ambush their prey. Sea pens, sea whips, and anemones create three-dimensional structure on the extensive sandy seafloor also inhabited by Dungeness crab and flatfish.

[Point Arena State Marine Conservation Area](#) shares an eastern border with [Point Arena State Marine Reserve](#) and overlaps a portion of the [Greater Farallones National Marine Sanctuary](#). Placing a state marine conservation area here provides moderately high levels of protection for marine life and the habitats they use.



Report poachers and polluters

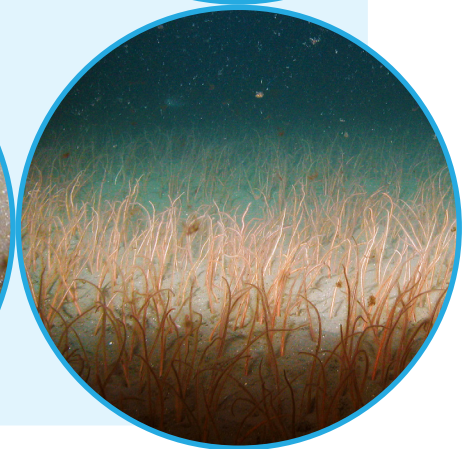
Call CalTIP: 1 (888) 334-2258

or text 847411 - begin message with "Caltip" followed by the details.



Quick Facts: Point Arena State Marine Conservation Area

- **MPA size:** 6.74 square miles
- **Depth range:** 153 to 324 feet
- **Habitat composition:**
 - Sand/mud: 6.59 square miles
 - Rock: 0.14 square miles



Non-Consumptive Activities

Fishing
See Regulations
On Back

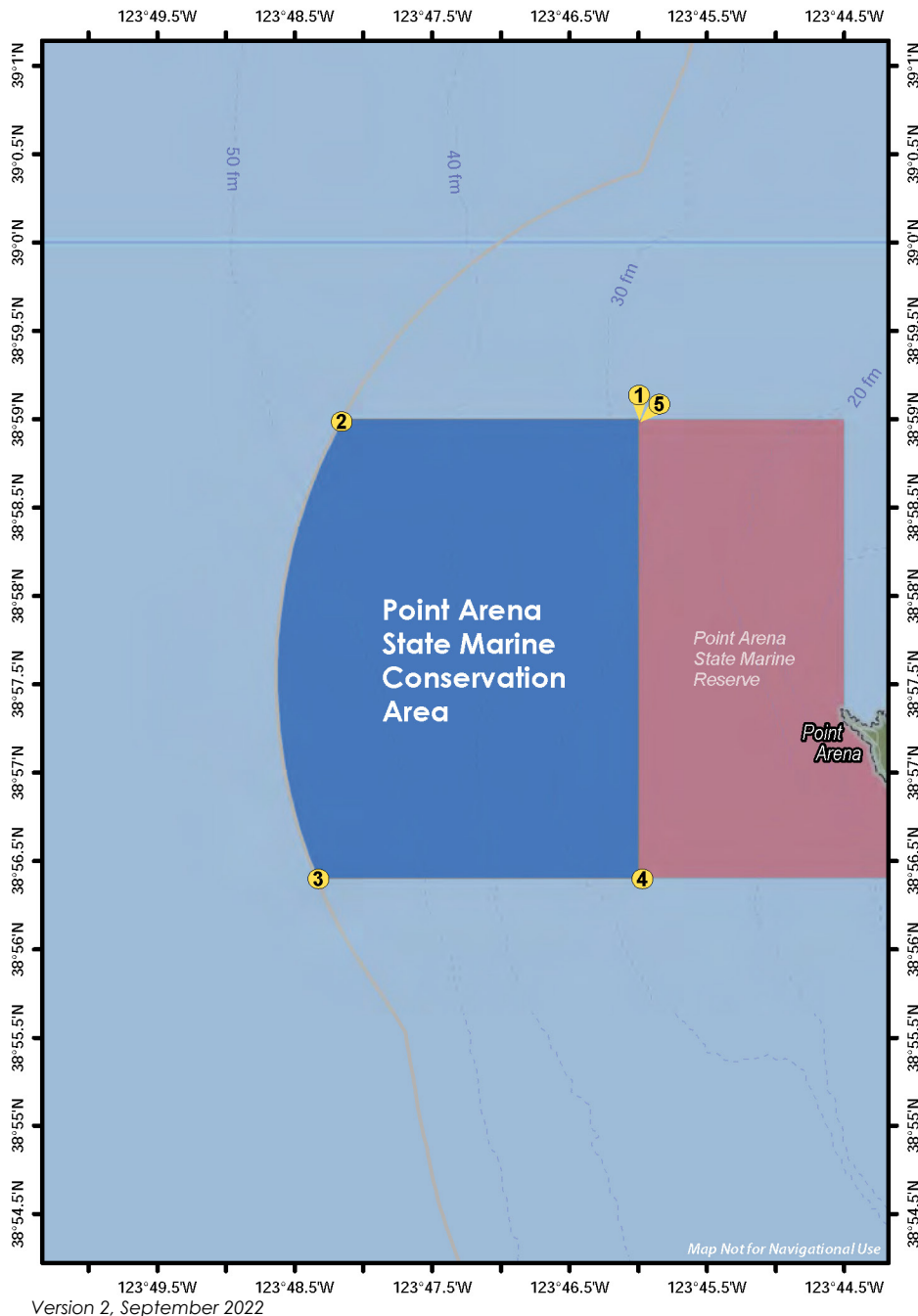
No Collecting

Further Information:

- MPA Website: www.wildlife.ca.gov/MPAs
- MPA and Sportfishing Interactive Map: www.wildlife.ca.gov/OceanSportfishMap
- Email: AskMarine@wildlife.ca.gov

Photos - *Upper:* Anemones, sponges, algae, and a lingcod on a boulder near Point Arena State Marine Conservation Area. *Lower right:* A thicket of sea whips covers the sandy seafloor at the conservation area. *Lower left:* Young lingcod near the conservation area.

CDFW/MARE photos



Point Arena State Marine Conservation Area Boundary and Regulations from California Code of Regulations Title 14, Section 632

Boundary:

This area is bounded by straight lines connecting the following points in the order listed except where noted:

- 38° 59.000' N. lat. 123° 46.000' W. long. ①;
- 38° 59.000' N. lat. 123° 48.162' W. long. ②; thence southward along the three nautical mile offshore boundary to
- 38° 56.400' N. lat. 123° 48.350' W. long. ③;
- 38° 56.400' N. lat. 123° 46.000' W. long. ④; and
- 38° 59.000' N. lat. 123° 46.000' W. long. ⑤

Permitted/Prohibited Uses:

1. It is unlawful to injure, damage, take, or possess any living, geological, or cultural marine resource for recreational and/or commercial purposes, with the following specified exceptions:
 - a. The recreational take of salmon by trolling is allowed.
 - b. The commercial take of salmon with troll fishing gear is allowed.

Take may be authorized for research, restoration, and monitoring purposes under a scientific collecting permit. See California Code of Regulations Title 14, Section 632(a).

The information in this document does not replace the official regulatory language found in the California Code of Regulations Title 14, Section 632. View these regulations online at www.wildlife.ca.gov/CCR-T14-MPAs.