

Estero Americano State Marine Recreational Management Area

North Central California - Established May, 2010



What is a California marine protected area (or "MPA")?

An MPA is a type of managed area primarily set aside to protect or conserve marine life and habitats in marine or estuarine waters. California's MPA Network consists of 124 areas with varying levels of protection, and 14 special closures, all designed to help safeguard the state's marine ecosystems. California marine recreational management areas focus on the protection, restriction, or enhancement of an area's recreational opportunities while preserving basic natural resources.

One goal for California's MPAs was to strategically place them near each other to form an interconnected network that would help to preserve the flow of life between marine ecosystems. Within that network each MPA has unique goals and regulations, and non-consumptive activities, permitted scientific research, monitoring, and educational pursuits may be allowed.

Why was this location chosen for a state marine recreational management area?

One of the goals for Estero Americano State Marine Recreational Management Area is to protect brackish and freshwater marsh, mudflat, and estuarine creek habitats, while allowing traditional waterfowl hunting to continue. The vast majority of the recreational management area is estuary, tidal creek habitat, and eelgrass beds that provide food for many species and help to filter the water. Striped bass, starry flounder, steelhead trout, ghost shrimp, mud shrimp, brackish-water clams, gobies, and a variety of waterbirds inhabit this estuary and benefit from its protection. In all, more than 44 marine and freshwater fish species and nearly 140 different species of birds use the shallow waters of the tidal estuary and surrounding wetland habitat.

Placing a state marine recreational management area here provides moderate levels of protection for local marine species and the habitats they use.



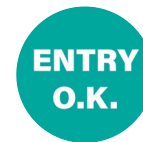
Report poachers and polluters
Call CalTIP: 1 (888) 334-2258

or text 847411 - begin message with "Caltip" followed by the details.



Quick Facts: Estero Americano State Marine Recreational Management Area

- **Size:** 0.13 square miles
- **Shoreline span:** 1.2 miles
- **Depth range:** 0 to 10 feet
- **Habitat composition:**
 - Estuary: 0.12 square miles
 - Eelgrass: 0.01 square miles
 - Coastal marsh: 0.03 square miles



Non-Consumptive Activities

Waterfowl Hunting
See Hunting Regulations

No Fishing

No Collecting

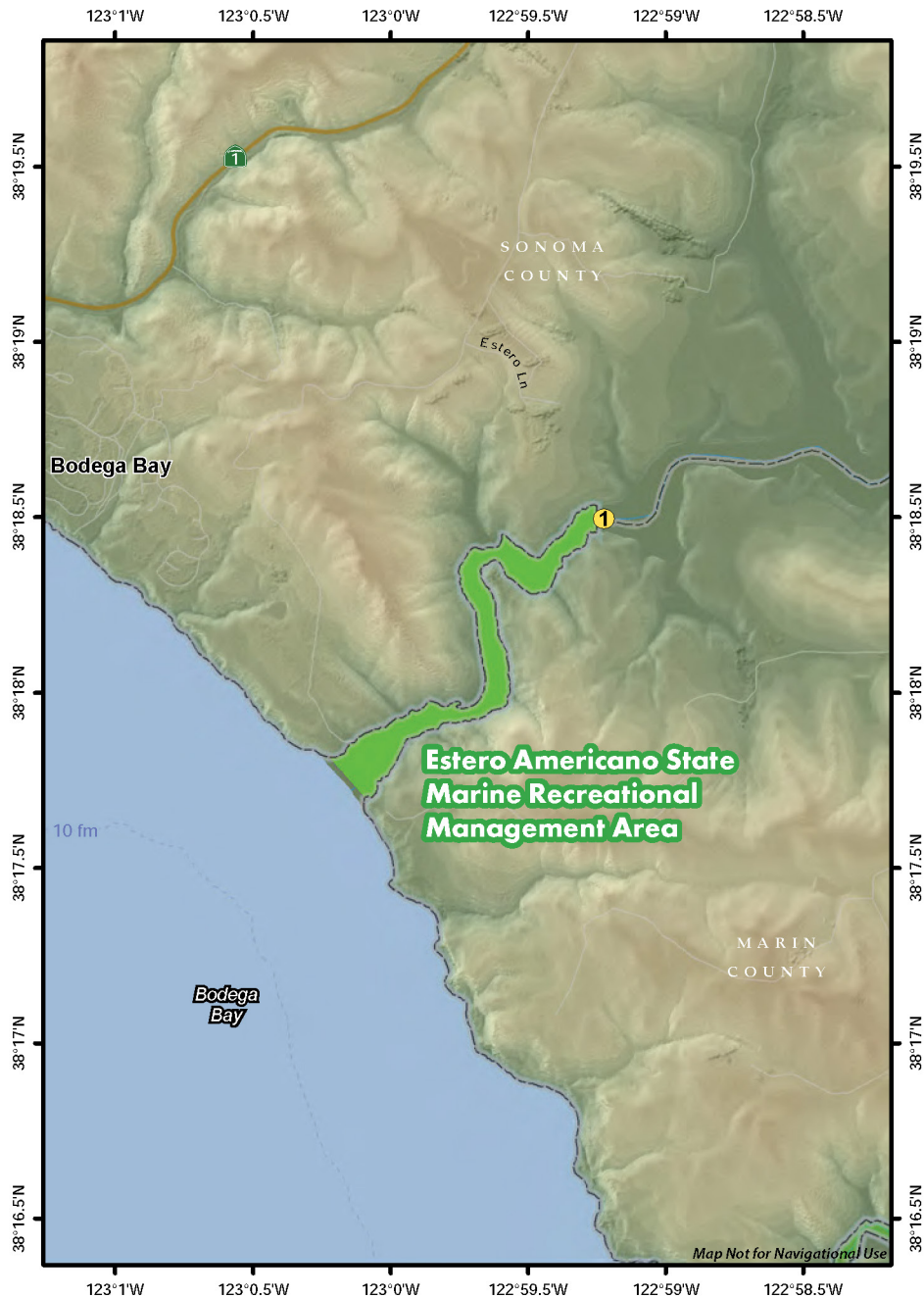
Further Information:

- MPA Website: www.wildlife.ca.gov/MPAs
- MPA and Sportfishing Interactive Map: www.wildlife.ca.gov/OceanSportfishMap
- Email: AskMarine@wildlife.ca.gov

Photos - Upper: Estero Americano State Marine Recreational Management Area, photo © Dana L. Brown, CC BY-NC-SA 2.0 **Lower right:** Mysid shrimp in the recreational management area, photo © Austin Parnow, CC BY-NC 2.0 **Lower left:** Western sandpipers in the recreational management area, photo © Austin Parnow, CC BY-NC 2.0

Estero Americano State Marine Recreational Management Area

North Central California - Sonoma and Marin Counties



Version 1 - September 2022

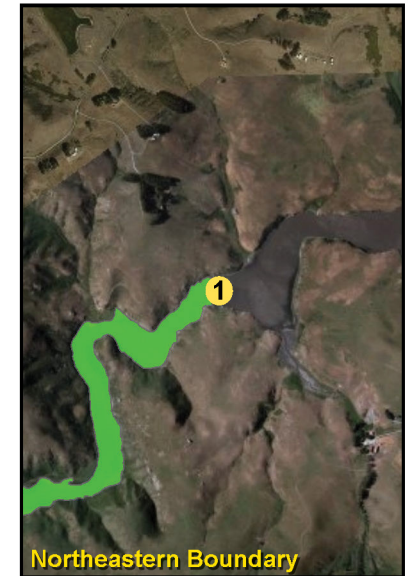
Estero Americano State Marine Recreational Management Area Boundary and Regulations from California Code of Regulations Title 14, Section 632

Boundary:

This area includes the waters below the mean high tide line within Estero Americano westward of longitude 122° 59.250' W ①.

Permitted/Prohibited Uses:

1. Waterfowl may be taken in accordance with the general waterfowl regulations (Sections 502, 550, 551, and 552).
2. Take of all living, geological, or cultural marine resources is prohibited.



Take may be authorized for research, restoration, and monitoring purposes under a scientific collecting permit. See California Code of Regulations Title 14, Section 632(a).

The information in this document does not replace the official regulatory language found in the California Code of Regulations Title 14, Section 632. View these regulations online at www.wildlife.ca.gov/CCR-T14-MPAs.