

### What is a California marine protected area (or "MPA")?

An MPA is a type of managed area primarily set aside to protect or conserve marine life and habitats in marine or estuarine waters. California's MPA Network consists of 124 areas with varying levels of protection, and 14 special closures, all designed to help safeguard the state's marine ecosystems. Fishing and collecting are banned at marine reserves such as Point Reyes State Marine Reserve, providing this MPA with the highest level of protection.

One goal for California's MPAs was to strategically place them near each other to form an interconnected network that would help to preserve the flow of life between marine ecosystems. Within that network each MPA has unique goals and regulations, and non-consumptive activities, permitted scientific research, monitoring, and educational pursuits may be allowed.

### Why was this location chosen for a state marine reserve?

One of the goals for Point Reyes State Marine Reserve is to protect the diverse habitats found there: sandy beaches, rocky shores, surfgrass, tidal flats, rocky reefs, and sand/mud seafloor. The rocky headland's biological diversity is exceptional, due in part to the strong upwelling of nutrient-rich waters in the area. Steller sea lions and northern elephant seals give birth, mate, and rest on the sandy shore. Common murrelets, sanderlings, and Brandt's cormorants nest on shore and on rocky islets, and search the beaches and nearshore waters for food. The rocky outcroppings and sandy seafloors that make up most of the reserve attract Dungeness crab, Nuttall's cockles, clams, a variety of rockfish and sculpin, sea stars, sea cucumbers, and octopus.

The reserve shares boundaries with [Estero de Limantour State Marine Reserve](#), [Point Reyes Headlands Special Closure](#), and [Point Reyes State Marine Conservation Area](#). [Point Reyes National Seashore](#) also shares a land-side boundary with the reserve. Placing a state marine reserve here provides very high levels of protection for local marine species and the habitats they use.



Report poachers and polluters  
Call CalTIP: 1 (888) 334-2258

or text 847411 - begin message with "Caltip"  
followed by the details.



### Quick Facts: Point Reyes State Marine Reserve

- **MPA size:** 9.55 square miles
- **Shoreline span:** 6.4 miles
- **Depth range:** 0 to 132 feet
- **Habitat composition:**  
Rock: 9.59 square miles  
Sand/mud: 8.53 square miles



Non-Consumptive Activities

No Fishing

No Collecting

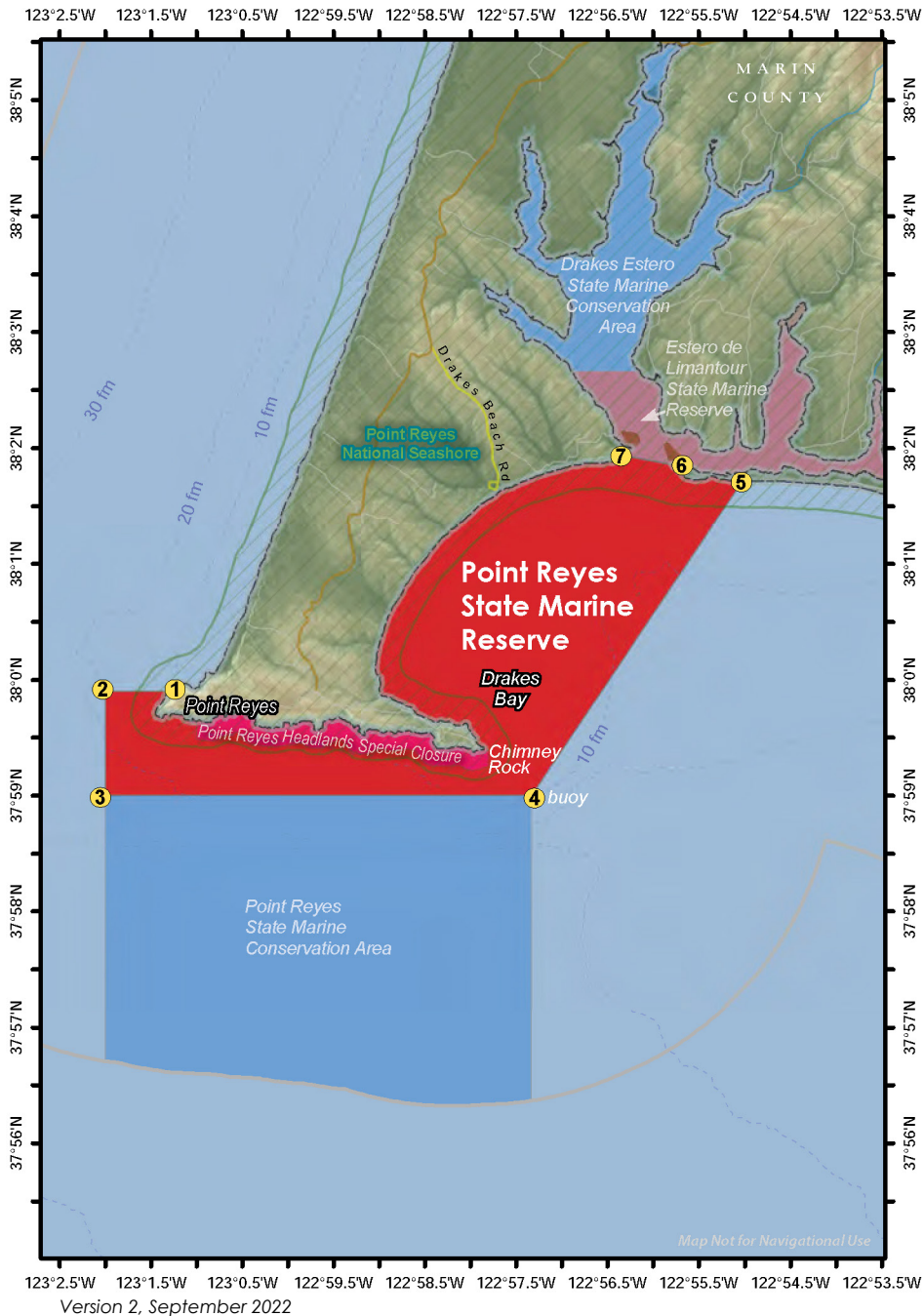
### Further Information:

- MPA Website: [www.wildlife.ca.gov/MPAs](http://www.wildlife.ca.gov/MPAs)
- MPA and Sportfishing Interactive Map: [www.wildlife.ca.gov/OceanSportfishMap](http://www.wildlife.ca.gov/OceanSportfishMap)
- Email: [AskMarine@wildlife.ca.gov](mailto:AskMarine@wildlife.ca.gov)

Photos - Upper: Sanderlings on the beach at Point Reyes State Marine Reserve, photo © Hannah Webber, CC BY-NC 2.0. Lower right: Nuttall's cockle at the reserve, photo © Lena Zentall, CC BY-NC 2.0. Lower left: Young northern elephant seals at the reserve, photo © Donna Pomeroy, CC BY-NC 2.0.

# Point Reyes State Marine Reserve

North Central California - Marin County



## Point Reyes State Marine Reserve Boundary and Regulations from California Code of Regulations Title 14, Section 632

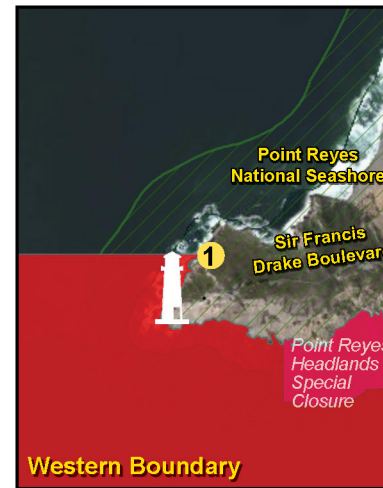
### Boundary:

This area is bounded by the mean high tide line and straight lines connecting the following points in the order listed:

- 37° 59.900' N. lat. 123° 01.278' W. long. ①;
- 37° 59.900' N. lat. 123° 02.000' W. long. ②;
- 37° 59.000' N. lat. 123° 02.000' W. long. ③;
- 37° 59.000' N. lat. 122° 57.340' W. long. ④; and
- 38° 01.750' N. lat. 122° 55.000' W. long. ⑤; thence westward along the mean high tide line onshore boundary to 38° 01.783' N. lat. 122° 55.286' W. long. ⑥; and 38° 01.941' N. lat. 122° 56.364' W. long. ⑦

### Permitted/Prohibited Uses:

It is unlawful to injure, damage, take, or possess any living, geological, or cultural marine resource.



Take may be authorized for research, restoration, and monitoring purposes under a scientific collecting permit. See California Code of Regulations Title 14, Section 632(a).

The information in this document does not replace the official regulatory language found in the California Code of Regulations Title 14, Section 632. View these regulations online at [www.wildlife.ca.gov/CCR-T14-MPAs](http://www.wildlife.ca.gov/CCR-T14-MPAs).