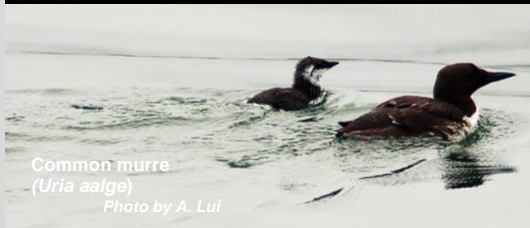


# Point Reyes State Marine Conservation Area

North Central California Marine Protected Areas (MPAs), *Established May 2010*



Common murre  
(*Uria aalge*)  
Photo by A. Lui



Lingcod and rocky bottom  
(*Ophiodon elongatus*)  
Photo by MARE ROV



Flag rockfish  
(*Sebastes rubrivinctus*)  
Photo by MARE ROV

## Site Overview

Photos are representative of the North Central Coast Region and may not be within this MPA.

## What is an MPA?

MPAs are a type of [marine managed area](#) (MMA) where marine or estuarine waters are set aside primarily to protect or conserve marine life and associated habitats. California has a coastal network of 124 protected areas designed to help increase the coherence and effectiveness of protecting the state's marine life, habitats, and ecosystems. The network includes three types of MPA: [state marine reserve](#) (SMR), [state marine conservation area](#) (SMCA), and [state marine park](#) (SMP); one MMA: [state marine recreational management area](#) (SMRMA); and [special closures](#). There are 119 MPAs, 5 MMAs and 15 special closures, each with unique boundaries and regulations in the network. Non-consumptive activities, restoration, and permitted scientific research are allowed.

## What is an SMCA?

An **SMCA** is a type of MPA that protects resources by allowing for only specific types of recreational and/or commercial take to occur. (Area restrictions are defined in [Title 14, Section 632\(a\)\(1\)\(C\)](#)).

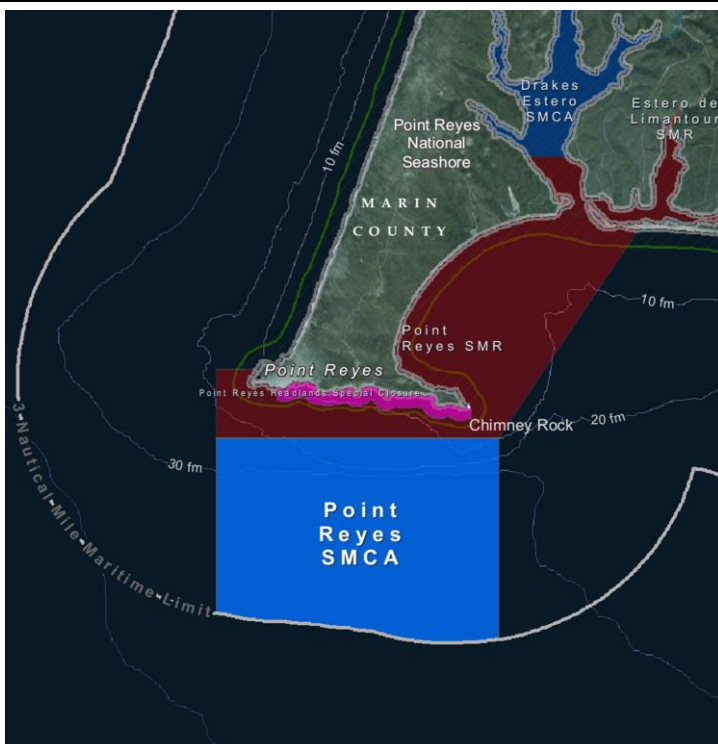
## Point Reyes SMCA Overview

- **MPA size:** 12.27 square miles
- **Depth range:** 51 to 217 feet
- **Along-shore span (shoreline):** 4.2 miles

## Point Reyes SMCA Key Habitats

- **Sand (all depths):** 12.08 square miles
- **Rock (all depths):** 0.17 square miles
- **Unidentified (all depths):** 0.02 square miles

## Where is Point Reyes SMCA?



## Boundaries and Regulations

**Boundary:** This area is bounded by straight lines connecting the following points in the order listed except where noted:

37° 59.000' N. lat. 123° 02.000' W. long.;  
37° 56.712' N. lat. 123° 02.000' W. long.;  
thence eastward along the three nautical mile offshore boundary to  
37° 56.370' N. lat. 122° 57.340' W. long.;  
37° 59.000' N. lat. 122° 57.340' W. long.; and  
37° 59.000' N. lat. 123° 02.000' W. long.

**Only the following take is permitted in Point Reyes SMCA:**

1. The recreational take of salmon by trolling, and Dungeness crab by trap.
2. The commercial take of salmon with trolling gear, and Dungeness crab by trap.

# Point Reyes State Marine Conservation Area

## How and Why Point Reyes was Chosen for an SMCA

MPAs were designed through a collaborative, regional public process by a cross-interest regional stakeholder group (RSG). Using scientific criteria, public input and local resource knowledge the RSG developed MPA proposals. RSG proposals included specific objectives (why the site should be an MPA-*included below*), the classification (type of MPA), boundaries, and regulations. Final MPA proposals were sent to the California Fish and Game Commission (Commission) for their adoption process. Point Reyes SMCA was adopted by the Commission in 2010.

### **North Central Coast RSG Specific Objectives for Point Reyes SMCA:**

SMCA extends protection offshore to state boundary for diverse fish, seabird & marine mammal species in deeper hard & soft bottom. Protect near shore reef species & habitats on which they depend while allowing commercial and/or recreational harvest of migratory, highly mobile, or other species where appropriate through use of SMCA. Helps protect diversity of species, including fish & mammals. Covers diversity of bottom habitats & oceanographic/wind conditions.

## Species Likely to Benefit from the Establishment of MPAs in California

Species likely to benefit from establishing an MPA are those, whose home range, behavior, reproduction, exploitation rate or population status indicates that they may benefit from spatial management. This includes species that are directly targeted by fisheries, those which are caught incidental to fishing for the target species (bycatch) and which cannot be returned to the water with a high rate of survival, and those which may be indirectly impacted through ecological changes within MPAs.

For a list of species likely to benefit from MPAs statewide: [www.dfg.ca.gov/marine/mpa/species.asp](http://www.dfg.ca.gov/marine/mpa/species.asp)

For a list of species likely to benefit from north central coast MPAs: [www.dfg.ca.gov/marine/pdfs/binders/b2dc.pdf](http://www.dfg.ca.gov/marine/pdfs/binders/b2dc.pdf)

## North Central Coast Regional Resources

California MPA Overview:

[www.wildlife.ca.gov/MPAs/Network-Overview](http://www.wildlife.ca.gov/MPAs/Network-Overview)

North Central Coast Regional Goals and Objectives:

[www.dfg.ca.gov/marine/pdfs/binders/b4da.pdf](http://www.dfg.ca.gov/marine/pdfs/binders/b4da.pdf)

California MLPA North Central Coast Study Region Description of MPAs:

[www.dfg.ca.gov/marine/pdfs/ipa\\_description.pdf](http://www.dfg.ca.gov/marine/pdfs/ipa_description.pdf)

Methods Used to Evaluate MPAs in the North Central Coast:

[www.dfg.ca.gov/marine/pdfs/nccrsg-dprops/evaluationmethods.pdf](http://www.dfg.ca.gov/marine/pdfs/nccrsg-dprops/evaluationmethods.pdf)

MPA Research and Monitoring Activities:

[www.wildlife.ca.gov/MPAs/Research-And-Monitoring](http://www.wildlife.ca.gov/MPAs/Research-And-Monitoring)

Regional MPA Statistics:

[www.wildlife.ca.gov/MPAs/Statistics](http://www.wildlife.ca.gov/MPAs/Statistics)

Regional Planning History:

[www.wildlife.ca.gov/Conservation/Marine/MPAs/Planning-Process](http://www.wildlife.ca.gov/Conservation/Marine/MPAs/Planning-Process)

## California MPA Network Resources

Detailed MPA guidebooks maps and brochures:

[www.wildlife.ca.gov/MPAs/Network](http://www.wildlife.ca.gov/MPAs/Network)

California Marine Life Protection Act Marine Protected Areas Master Plan:

[www.wildlife.ca.gov/Conservation/Marine/MPAs/Master-Plan](http://www.wildlife.ca.gov/Conservation/Marine/MPAs/Master-Plan)

Marine Life Protection Act Summary and Network Goals:

[www.wildlife.ca.gov/MPAs/Network-Goals](http://www.wildlife.ca.gov/MPAs/Network-Goals)



For more information, visit:

[www.wildlife.ca.gov/MPAs](http://www.wildlife.ca.gov/MPAs)

Email:

[AskMPA@wildlife.ca.gov](mailto:AskMPA@wildlife.ca.gov)

MPA Mobile:



Report poaching and polluting,  
Call CalTIP

1-888-334-2258

The information in this document does not replace the official regulatory language found in the California Code of Regulations Title 14, Section 632 [www.wildlife.ca.gov/Conservation/Marine/MPAs/Network/Title-14-Section-632](http://www.wildlife.ca.gov/Conservation/Marine/MPAs/Network/Title-14-Section-632)