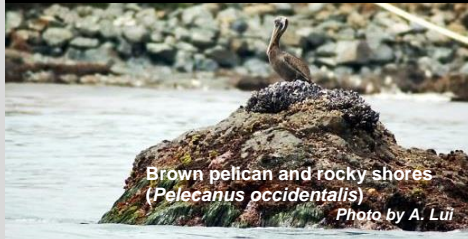


# Point Reyes Headlands Special Closure

North Central California Marine Protected Areas (MPAs), *Established May 2010*



## Site Overview

Photos are representative of the North Central Coast Region and may not be within this Special Closure

## What is an MPA?

MPAs are a type of [marine managed area](#) (MMA) where marine or estuarine waters are set aside primarily to protect or conserve marine life and associated habitats. California has a coastal network of 124 protected areas designed to help increase the coherence and effectiveness of protecting the state's marine life, habitats, and ecosystems. The network includes three types of MPA: [state marine reserve](#) (SMR), [state marine conservation area](#) (SMCA), and [state marine park](#) (SMP); one MMA: [state marine recreational management area](#) (SMRMA); and [special closures](#). There are 119 MPAs, 5 MMAs and 15 special closures, each with unique boundaries and regulations in the network. Non-consumptive activities, restoration, and permitted scientific research are allowed.

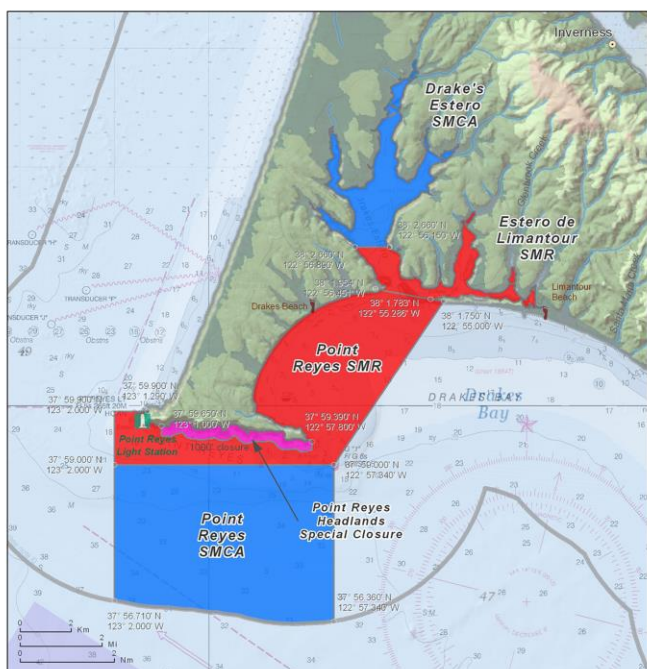
## What is a Special Closure?

A **special closure** is an area designated by the Fish and Game Commission that prohibits access and/or restricts boating activities in waters adjacent to sea bird rookeries or marine mammal haul-out sites.

## Point Reyes Headlands Overview

- **Special closure size:** 0.67 square miles
- **Depth range:** 0 to 40 feet
- **Closure season:** Year round
- **Closure distance:** 1000 feet

## Where is Point Reyes Headlands?



## Point Reyes Headlands Key Habitats

- **Beaches:** 2.11 miles
- **Rocky shores:** 2.78 miles
- **Surfgrass:** 3.07 miles
- **Sand (all depths):** 0.11 square miles
- **Rocky (all depths):** 0.13 square miles
- **Unidentified (all depths):** 0.39 square miles

## Boundaries and Regulations

**Boundary:** A special closure is designated on the south side of the Point Reyes Headlands from the mean high tide line to a distance of 1000 feet seaward of the mean lower low tide line of any shoreline between lines extending due south from each of the following two points:

37° 59.65' N. lat. 123° 01.00' W. long; and  
37° 59.39' N. lat. 122° 57.80' W. long.

**Permitted/Prohibited Uses:** No person except department employees or employees of the United States Fish and Wildlife Service, National Park Service, or United States Coast Guard, in performing their official duties, or unless permission is granted by the department, shall enter this area at any time.

# Point Reyes Headlands Special Closure

## How Point Reyes Headlands was Chosen for a Special Closure

This special closure was developed by a work group made up of members from the larger cross-interest regional stakeholder group (RSG) as part of the Marine Life Protection Act (MLPA). Work group members used local knowledge and input, and scientific data to identify areas where the special closure designation could be applied. Suggested special closure locations were then brought to entire RSG, who after open discussion decided what special closures would be included in their regional marine protected area (MPA) proposal. Final proposals were sent to the California Fish and Game Commission (Commission) for adoption. Point Reyes Headlands special closure was adopted by the Commission in 2010.

## Why Point Reyes Headlands was Chosen for a Special Closure

Special closures are designed to minimize the human disturbance of seabirds and marine mammals by restricting boating and access (seasonal or year round) to the area. Smaller than MPAs, special closures work within the overall MPA network to provide localized protection to seabird rookeries or marine mammal haul-out sites in areas of significant importance to the marine ecosystem. In some instances special closures may offer protection from geographically-specific threats that are not necessarily addressed by MPAs including disturbance.

### **North Coast RSG Identified Rationale Point Reyes Headlands Special Closure:**

This special closure is intended to protect the largest and most diverse seabird colony on the mainland in the entire region. Species found here include Common Murre, Pelagic Cormorant, Western Gull, Brandt's Cormorant, Pigeon Guillemot, Rhinoceros Auklet, Ashy Storm-Petrel, and Brown Pelican.

## North Central Coast Regional Resources

California MPA Overview:

[www.wildlife.ca.gov/MPAs/Network-Overview](http://www.wildlife.ca.gov/MPAs/Network-Overview)

North Central Coast Regional Goals and Objectives:

[www.dfg.ca.gov/marine/pdfs/binders/b4da.pdf](http://www.dfg.ca.gov/marine/pdfs/binders/b4da.pdf)

California MLPA North Central Coast Study Region Description of MPAs:

[www.dfg.ca.gov/marine/pdfs/ipa\\_description.pdf](http://www.dfg.ca.gov/marine/pdfs/ipa_description.pdf)

Methods Used to Evaluate MPAs in the North Central Coast:

[www.dfg.ca.gov/marine/pdfs/ncrsg-dprops/evaluationmethods.pdf](http://www.dfg.ca.gov/marine/pdfs/ncrsg-dprops/evaluationmethods.pdf)

MPA Research and Monitoring Activities:

[www.wildlife.ca.gov/MPAs/Research-And-Monitoring](http://www.wildlife.ca.gov/MPAs/Research-And-Monitoring)

Regional MPA Statistics:

[www.wildlife.ca.gov/MPAs/Statistics](http://www.wildlife.ca.gov/MPAs/Statistics)

Regional Planning History:

[www.wildlife.ca.gov/Conservation/Marine/MPAs/Planning-Process](http://www.wildlife.ca.gov/Conservation/Marine/MPAs/Planning-Process)

## California MPA Network Resources

Detailed MPA guidebooks maps and brochures:

[www.wildlife.ca.gov/MPAs/Network](http://www.wildlife.ca.gov/MPAs/Network)

California Marine Life Protection Act Marine Protected Areas Master Plan:

[www.wildlife.ca.gov/Conservation/Marine/MPAs/Master-Plan](http://www.wildlife.ca.gov/Conservation/Marine/MPAs/Master-Plan)

Marine Life Protection Act Summary and Network Goals:

[www.wildlife.ca.gov/MPAs/Network-Goals](http://www.wildlife.ca.gov/MPAs/Network-Goals)



**For more Information, visit:**

[www.wildlife.ca.gov/MPAs](http://www.wildlife.ca.gov/MPAs)

**Email:**

[AskMPA@wildlife.ca.gov](mailto:AskMPA@wildlife.ca.gov)

**MPA Mobile:**



Report poaching and polluting,

Call CalTIP

**1-888-334-2258**

The information in this document does not replace the official regulatory language found in the California Code of Regulations Title 14, Section 632 [www.wildlife.ca.gov/Conservation/Marine/MPAs/Network/Title-14-Section-632](http://www.wildlife.ca.gov/Conservation/Marine/MPAs/Network/Title-14-Section-632)