

Southeast Farallon Island State Marine Reserve

North Central California Marine Protected Areas (MPAs), *Established May 2010*



School of juvenile rockfish
Photo by Kevin Joe



Blue rockfish
(*Sebastes mystinus*)
Photo by Kevin Joe



Gooseneck barnacles
(*Pollicipes polymerus*)
Photo by Kevin Joe

Site Overview

Photos are representative of the North Central Coast Region and may not be within this MPA.

What is an MPA?

MPAs are a type of [marine managed area](#) (MMA) where marine or estuarine waters are set aside primarily to protect or conserve marine life and associated habitats. California has a coastal network of 124 protected areas designed to help increase the coherence and effectiveness of protecting the state's marine life, habitats, and ecosystems. The network includes three types of MPA: [state marine reserve](#) (SMR), [state marine conservation area](#) (SMCA), and [state marine park](#) (SMP); one MMA: [state marine recreational management area](#) (SMRMA); and [special closures](#). There are 119 MPAs, 5 MMAs and 15 special closures, each with unique boundaries and regulations in the network. Non-consumptive activities, restoration, and permitted scientific research are allowed.

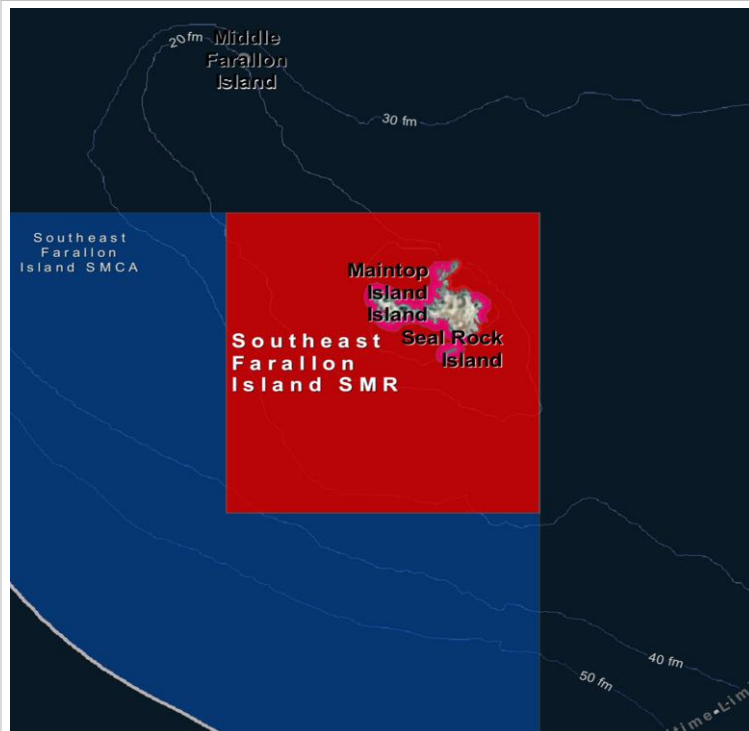
What is an SMR?

An **SMR** is a type of MPA that protects resources by prohibiting the recreational and/or commercial take of all marine resources. (*Area restrictions are defined in [Title 14, Section 632\(a\)\(1\)\(A\)](#)*).

Southeast Farallon Island SMR Overview

- **MPA size:** 5.36 square miles
- **Depth range:** 0 to 238 feet

Where is Southeast Farallon Island SMR?



Southeast Farallon Island SMR Key Habitats

- **Beaches:** 0.08 miles
- **Rocky shores:** 6.42 miles
- **Surfgrass:** 0.06 square miles
- **Sand (all depths):** 2.78 square miles
- **Rock (all depths):** 2.57 square miles

Boundaries and Regulations

Boundary: This area is bounded by straight lines connecting the following points in the order listed:

- 37° 42.600' N. lat. 122° 59.500' W. long.;
- 37° 42.600' N. lat. 123° 02.000' W. long.;
- 37° 40.500' N. lat. 123° 02.000' W. long.;
- 37° 40.500' N. lat. 122° 59.500' W. long.; and
- 37° 42.600' N. lat. 122° 59.500' W. long.

All take is prohibited in Southeast Farallon Island SMR.

Southeast Farallon Island State Marine Reserve

How and Why Southeast Farallon Island was Chosen for an SMR

MPAs were designed through a collaborative, regional public process by a cross-interest regional stakeholder group (RSG). Using scientific criteria, public input and local resource knowledge the RSG developed MPA proposals. Proposals included specific objectives (why the site should be an MPA-*included below*), the classification (type of MPA), boundaries, and regulations. Final MPA proposals were sent to the California Fish and Game Commission (Commission) for their adoption process. Southeast Farallon Island SMR was adopted by the Commission in 2010.

North Central Coast RSG Specific Objectives for Southeast Farallon Island SMR:

Purpose of SMR is to allow natural ecosystem function in key portion of subregion. Include portion of unique tidal, subtidal, benthic & pelagic habitat of Farallones. Further objectives of reserve are to protect natural diversity & structure & function of unique marine ecosystem, increase rockfish larval production help assure continued recovery of ground fish enhance reproductive success of seabirds & marine mammals using islands & increase supply of large adults & larval fish which can disperse to adjacent areas for fisheries harvest outside MPA. Protects globally significant biological site.

Species Likely to Benefit from the Establishment of MPAs in California

Species likely to benefit from establishing an MPA are those, whose home range, behavior, reproduction, exploitation rate or population status indicates that they may benefit from spatial management. This includes species that are directly targeted by fisheries, those which are caught incidental to fishing for the target species (bycatch) and which cannot be returned to the water with a high rate of survival, and those which may be indirectly impacted through ecological changes within MPAs.

For a list of species likely to benefit from MPAs statewide: www.dfg.ca.gov/marine/mpa/species.asp

For a list of species likely to benefit from north central coast MPAs: www.dfg.ca.gov/marine/pdfs/binders/b2dc.pdf

North Central Coast Regional Resources

California MPA Overview:

www.wildlife.ca.gov/MPAs/Network-Overview

North Central Coast Regional Goals and Objectives:

www.dfg.ca.gov/marine/pdfs/binders/b4da.pdf

California MLPA North Central Coast Study Region Description of MPAs:

www.dfg.ca.gov/marine/pdfs/ipa_description.pdf

Methods Used to Evaluate MPAs in the North Central Coast:

www.dfg.ca.gov/marine/pdfs/nccrsg-dprops/evaluationmethods.pdf

MPA Research and Monitoring Activities:

www.wildlife.ca.gov/MPAs/Research-And-Monitoring

Regional MPA Statistics:

www.wildlife.ca.gov/MPAs/Statistics

Regional Planning History:

www.wildlife.ca.gov/Conservation/Marine/MPAs/Planning-Process

California MPA Network Resources

Detailed MPA guidebooks maps and brochures:

www.dfg.ca.gov/marine/mpa/mpa_summary.asp

California Marine Life Protection Act Marine Protected Areas Master Plan:

www.dfg.ca.gov/marine/mpa/masterplan.asp

Marine Life Protection Act Summary and Network Goals:

www.dfg.ca.gov/marine/mpa/background.asp



For more Information, visit:

www.wildlife.ca.gov/MPAs

Email:

AskMPA@wildlife.ca.gov

MPA Mobile:



Report poaching and polluting,
Call CalTIP

1-888-334-2258

The information in this document does not replace the official regulatory language found in the California Code of Regulations Title 14, Section 632 www.wildlife.ca.gov/Conservation/Marine/MPAs/Network/Title-14-Section-632