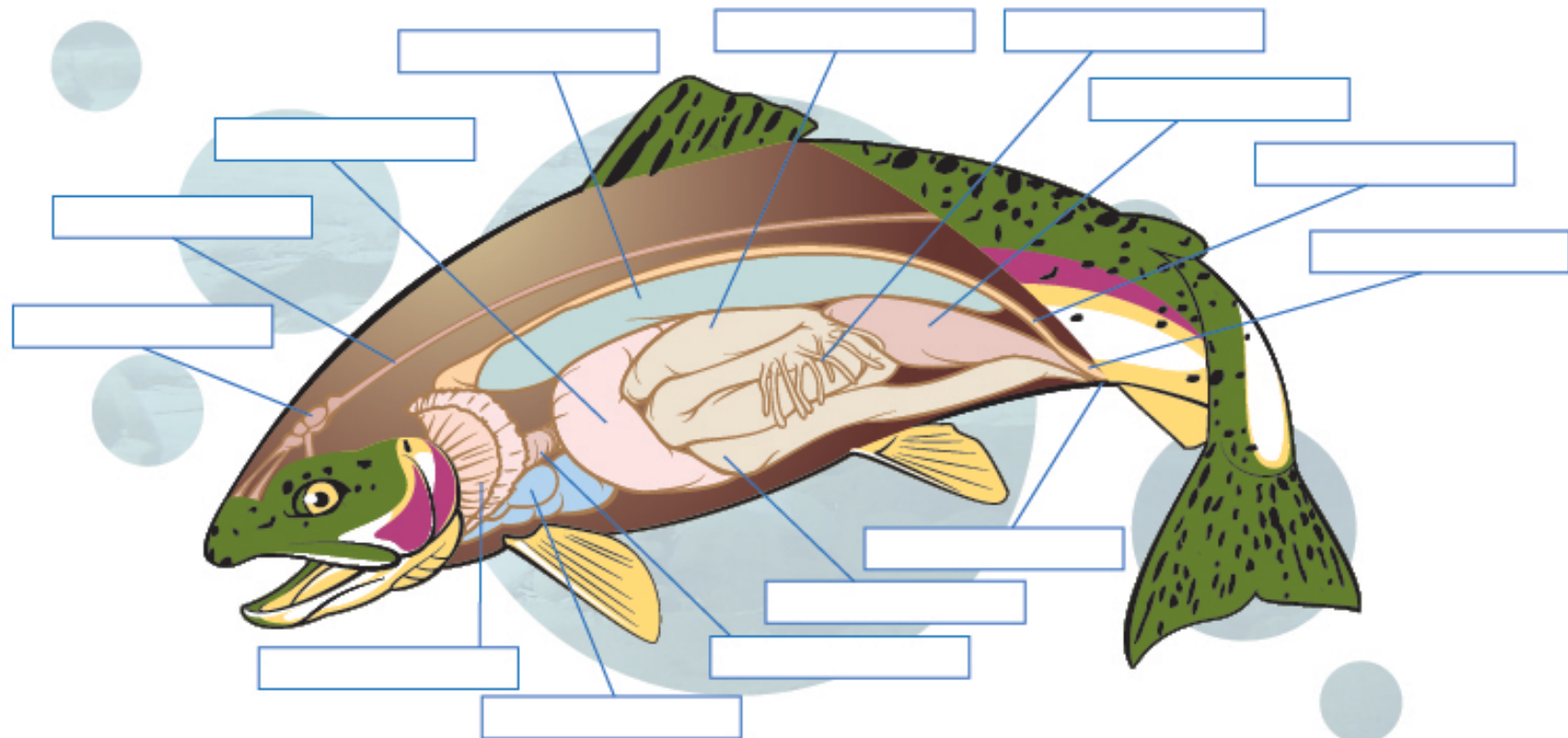


INTERNAL ANATOMY



Brain- is the nerve processing center

Spinal Cord- delivers the signals from the brain

Liver- acts as a filter for the body

Air Bladder- moves the trout up and down in water

Stomach- digests food

Pyloric Caeca- further digests food

Gonad- houses the reproductive organs

Kidney- processes liquid from blood stream

Urinary Bladder- houses the toxins from the kidney

Vent- opening to excrete material from the trout

Intestines- processes the food after digestion

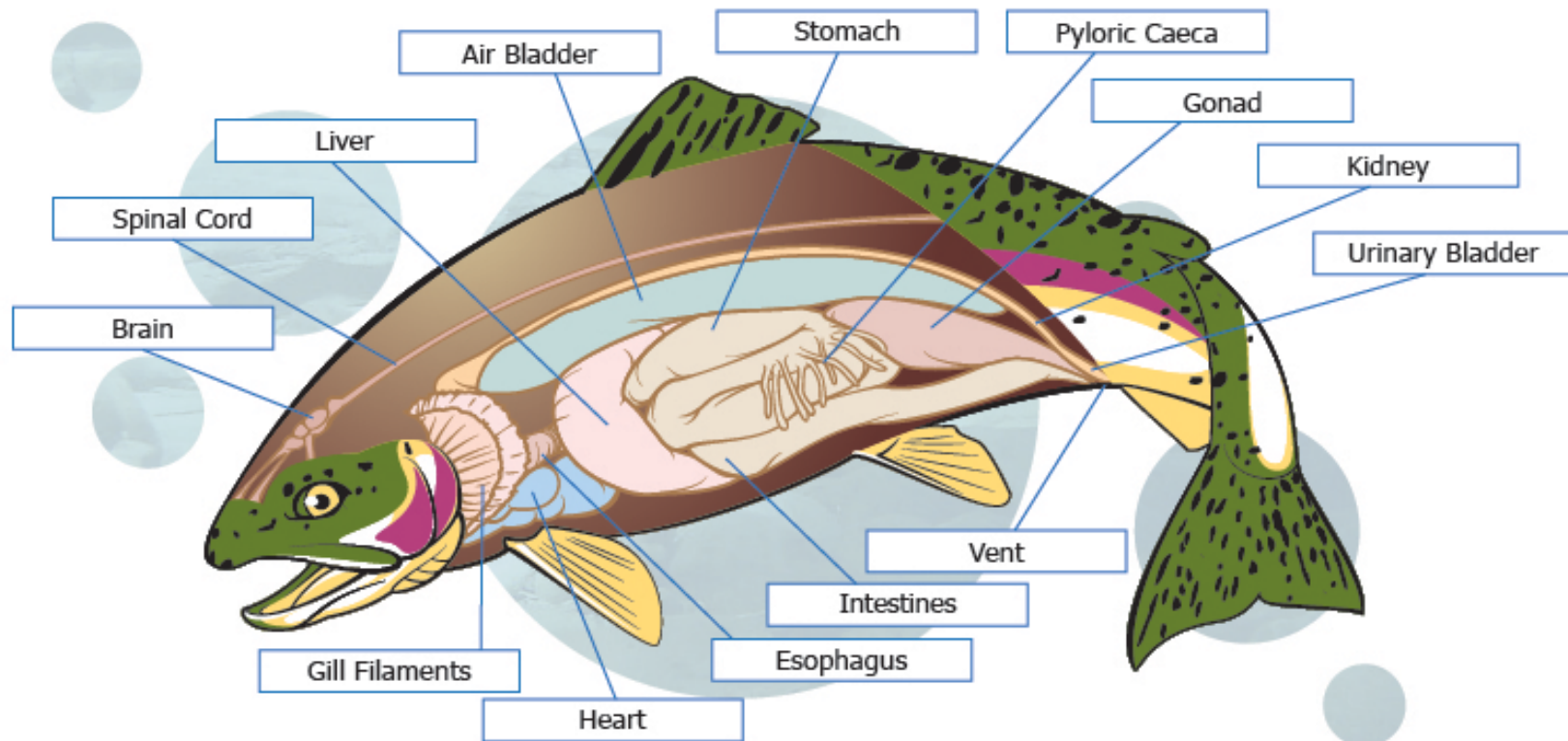
Esophagus- passage way from the mouth to the stomach

Heart- pumps blood through the trout

Gill Filaments- process oxygen



INTERNAL ANATOMY



Brain- is the nerve processing center

Spinal Cord- delivers the signals from the brain

Liver- acts as a filter for the body

Air Bladder- moves the trout up and down in water

Stomach- digests food

Pyloric Caeca- further digests food

Gonad- houses the reproductive organs

Kidney- processes liquid from blood stream

Urinary Bladder- houses the toxins from the kidney

Vent- opening to excrete material from the trout

Intestines- processes the food after digestion

Esophagus- passage way from the mouth to the stomach

Heart- pumps blood through the trout

Gill Filaments- process oxygen

