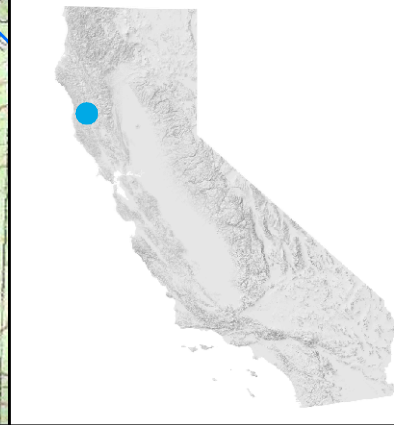


- Barrier Remediated
- Total Barrier
- Partial Barrier
- Not a Barrier
- Remediated, Fish Response Unconfirmed
- ▲ Natural Total Barrier
- ▲ Natural Partial Barrier
- ★ Screened Diversion
- ★ Unscreened Diversion
- Unknown Passage Status
- Unassessed



**Site Name:** Rhine Driveway (previously Hamman Driveway)

**Stream Name:** South Fork Ryan Creek

**Structure Owner:** Private landowner(s) (non-corporate)

**Year Remediated:** 2013

**Site Type:** Road crossing

**Site Status After Remediation:** Remediated, fish response unconfirmed

**Species Benefited After Remediation:** Coho

**Immediate Downstream barrier PAD ID:** [707085](#)

**PAD ID:** [712813](#)

**Tributary To:** Outlet Creek

**Barrier Remediation By:** Five Counties Salmonid Conservation Program

**Barrier Description Prior to Remediation:** Partial

**Count of Barriers Downstream:** 1

**Count of Barriers Upstream:** 0

**Distance Upstream to Next Barrier or Limit of Anadromy :** 6.5911 mi

\*Site statistics based on December 2014 version of the Passage Assessment Database

**Notes:** On 8/19/2013, Wiyot tribe assessed fish passage for adult pacific lamprey, and determined that this site is a not a barrier. Current site slated to be replaced with open-bottom arch culvert with natural streambed. Perched and undersized corrugated metal pipe was in process of being replaced during 8/19/13 site visit. A follow-up site visit to verify new crossing does not present passage problems for lampreys would be valuable. Prior to lamprey assessment: 5' Corrugate metal culvert was replaced with a 14' multi-place arch culvert and the channel was restored. The second pipe is offset 40' from the main crossing pipe and has a return flow channel to the main stem. It was disconnected as part of this fish passage project. After d/s barrier removal, coho were found up to Rhine Driveway in 2012 and in 2014 spawner surveys will be conducted by RTA on behalf of 5 counties upstream of this driveway. Before Treatment: Partial barrier per professional judgment by CDFW. Two 5 ft diameter corrugated metal pipes (CMP) under a 25 foot embankment depth, slope is approximately 20%