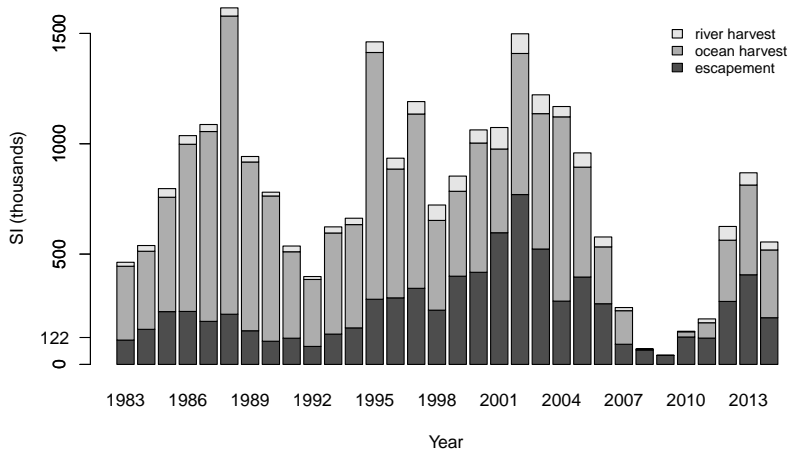
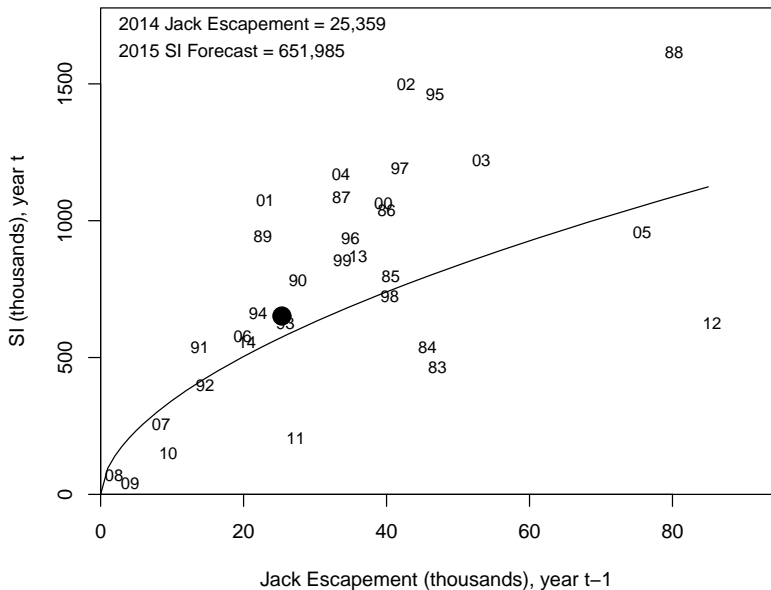


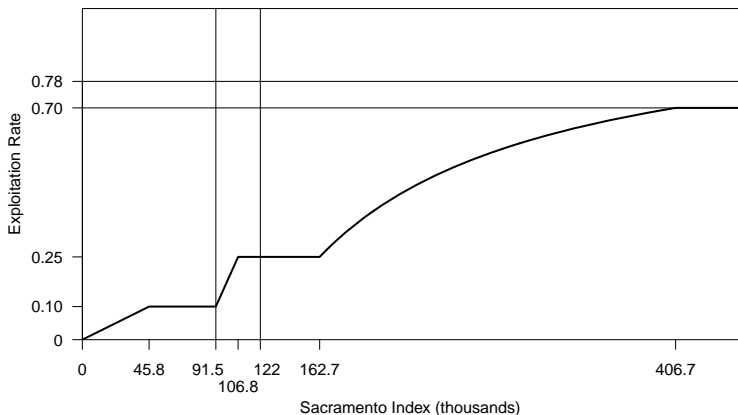
# 2014 Sacramento Index (SI) estimate: 554,932



# 2015 SI forecast: 651,985

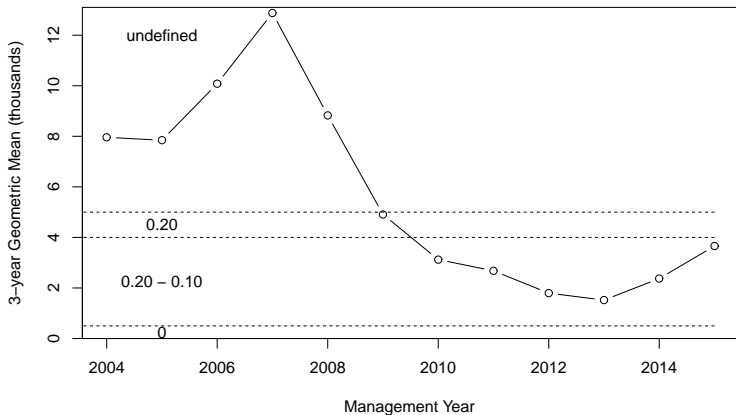


## Management context

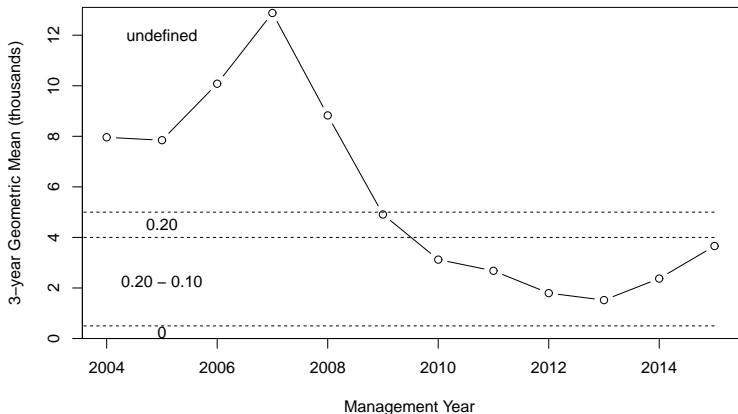


- ▶ Abundance forecast relatively large
- ▶ Must target an escapement of at least 195,596 (max 70% exploitation rate)
- ▶ 2014 regs: preliminary escapement prediction of 337,602
- ▶ Unlikely to constrain 2015 fisheries

# Sacramento River winter Chinook

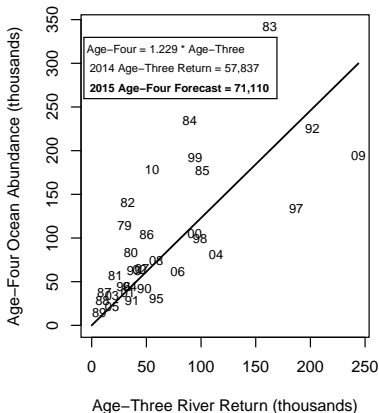
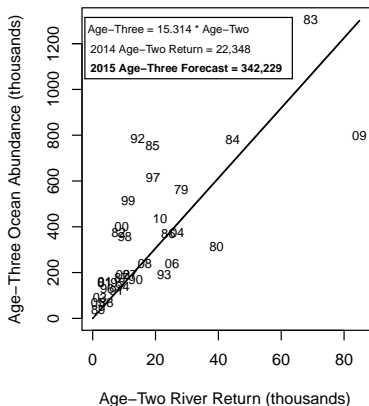


# Sacramento River winter Chinook



- ▶ Maximum allowable age-3 impact rate: 19.0%
- ▶ 2014 regs: preliminary prediction of 15.2%
- ▶ Likely to constrain fisheries south of Point Arena

# 2015 Klamath abundance forecast: 423,753

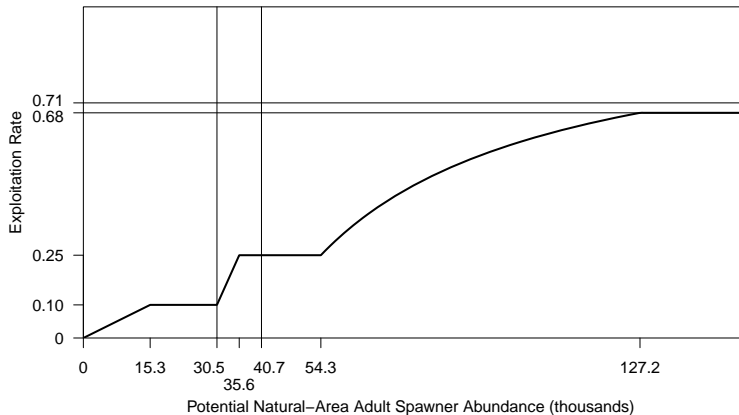


age-3: 342,229

age-4: 71,110

age-5: 10,414

## Management context



- ▶ Potential spawner abundance forecast: 99,102
- ▶ Must target an escapement of at least 40,700 (59% exploitation rate)

## KRFC management context, contd.

2014 regs:

- ▶ Tribal allocation: 50% of total harvest
- ▶ River recreational allocation: 15.1% of non-tribal harvest
- ▶ Natural-area adult spawners prediction: 57,800
- ▶ Exploitation Rate: 42%



## California Coastal Chinook

- ▶ Consultation standard limits KRFC age-4 harvest rate to 16%
- ▶ 2014 fisheries: preliminary forecast of 13.5%
- ▶ KRFC age-4 harvest rate will constrain 2015 ocean salmon fisheries