

# Moro Cojo Slough State Marine Reserve

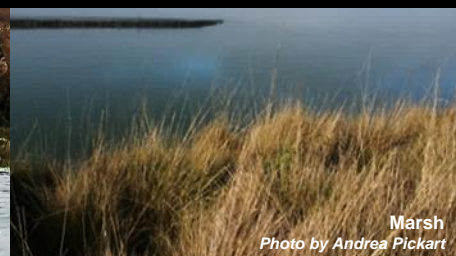
Central California Marine Protected Areas (MPAs), *Established September 2007*



Estuary  
Photo by Paulo Serpa



Shorebirds  
Photo by A. Lui



Marsh  
Photo by Andrea Pickart

## Site Overview

Photos are representative of the Central Coast Region and may not be within this MPA.

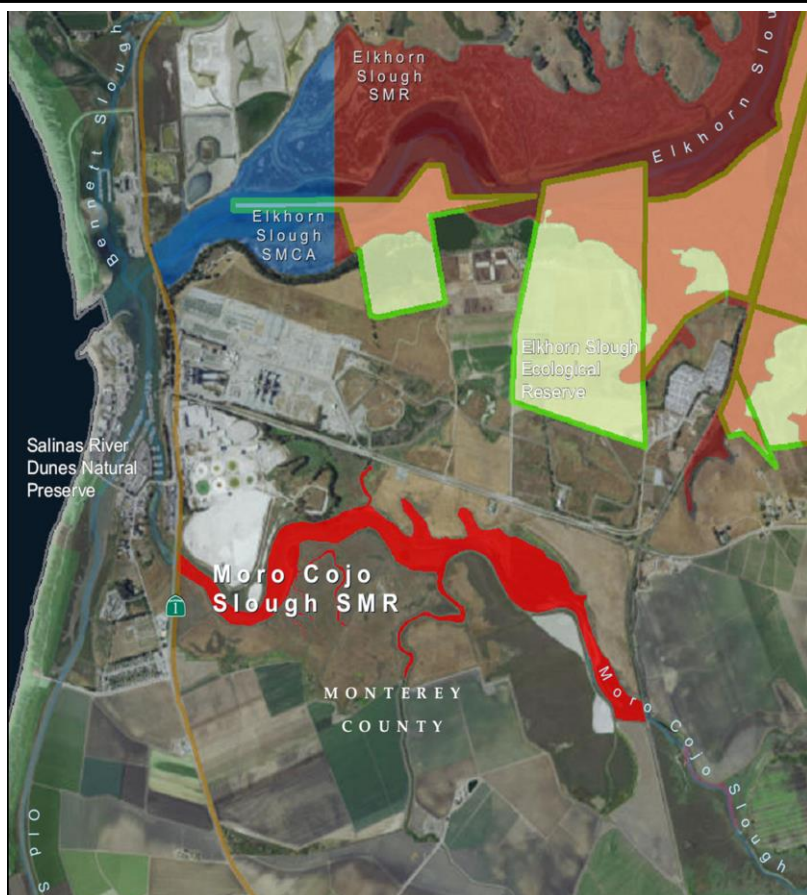
### What is an MPA?

MPAs are a type of [marine managed area](#) (MMA) where marine or estuarine waters are set aside primarily to protect or conserve marine life and associated habitats. California has a coastal network of 124 protected areas designed to help increase the coherence and effectiveness of protecting the state's marine life, habitats, and ecosystems. The network includes three types of MPA: [state marine reserve](#) (SMR), [state marine conservation area](#) (SMCA), and [state marine park](#) (SMP); one MMA: [state marine recreational management area](#) (SMRMA); and [special closures](#). There are 119 MPAs, 5 MMAs and 15 special closures, each with unique boundaries and regulations in the network. Non-consumptive activities, restoration, and permitted scientific research are allowed.

### What is an SMR?

An **SMR** is a type of MPA that protects resources by prohibiting the recreational and/or commercial take of all marine resources. (*Area restrictions are defined in [Title 14, Section 632\(a\)\(1\)\(A\)](#)*).

### Where is Moro Cojo Slough SMR?



### Moro Cojo Slough SMR Overview

- **MPA size:** 0.2 square miles
- **Depth range:** 0 to 10 feet
- **Along-shore span (shoreline):** 5.0 miles

### Moro Cojo Slough SMR Key Habitats

- **Estuary:** 0.1 square miles
- **Marsh:** 0.09 square miles

### Boundaries and Regulations

**Boundary:** This area includes the waters within Moro Cojo Slough below mean high tide and east of the Highway 1 Bridge and west of the crossing of the Southern Pacific Railroad tracks.

**All take is prohibited in Moro Cojo Slough SMR.**

# Moro Cojo Slough State Marine Reserve

## How and Why Moro Cojo Slough was Chosen for an SMR

MPAs were designed through a collaborative, regional public process by a cross-interest regional stakeholder group (RSG). Using scientific criteria, public input and local resource knowledge the RSG developed MPA proposals. Proposals included specific objectives (why the site should be an MPA-*included below*), the classification (type of MPA), boundaries, and regulations. Final MPA proposals were sent to the California Fish and Game Commission (Commission) for their adoption process. Moro Cojo Slough SMR was adopted by the Commission in 2007.

### **Summary of Objectives for Moro Cojo Slough SMR:**

Provide complete protection for one of the few estuarine areas of the central coast. A recent grant to the North Monterey County Recreation and Park District will create more than three miles of nature trails and interpretive stations within the slough; the additional protection provided by the reserve will help ensure this increased access does not lead to new take of living resources.

## Species Likely to Benefit from the Establishment of MPAs in California

Species likely to benefit from establishing an MPA are those, whose home range, behavior, reproduction, exploitation rate or population status indicates that they may benefit from spatial management. This includes species that are directly targeted by fisheries, those which are caught incidental to fishing for the target species (bycatch) and which cannot be returned to the water with a high rate of survival, and those which may be indirectly impacted through ecological changes within MPAs.

For a list of species likely to benefit from MPAs statewide: [www.dfg.ca.gov/marine/mpa/species.asp](http://www.dfg.ca.gov/marine/mpa/species.asp)

For a list of species likely to benefit from central coast MPAs: [www.dfg.ca.gov/marine/pdfs/binder3b.pdf](http://www.dfg.ca.gov/marine/pdfs/binder3b.pdf)

## Central Coast Regional Resources

California MPA Overview:

[www.wildlife.ca.gov/MPAs/Network-Overview](http://www.wildlife.ca.gov/MPAs/Network-Overview)

Central Coast Regional Goals and Objectives:

[www.dfg.ca.gov/marine/pdfs/rqop092805.pdf](http://www.dfg.ca.gov/marine/pdfs/rqop092805.pdf)

2008 Master Plan Appendix O: Regional Management Plan:

[www.dfg.ca.gov/marine/pdfs/revisedmp0108o.pdf](http://www.dfg.ca.gov/marine/pdfs/revisedmp0108o.pdf)

MPA Research and Monitoring Activities:

[www.wildlife.ca.gov/MPAs/Research-And-Monitoring](http://www.wildlife.ca.gov/MPAs/Research-And-Monitoring)

Regional MPA Statistics:

[www.wildlife.ca.gov/MPAs/Statistics](http://www.wildlife.ca.gov/MPAs/Statistics)

Regional Planning History:

[www.wildlife.ca.gov/Conservation/Marine/MPAs/Planning-Process](http://www.wildlife.ca.gov/Conservation/Marine/MPAs/Planning-Process)

## California MPA Network Resources

Detailed MPA guidebooks maps and brochures:

[www.wildlife.ca.gov/MPAs/Network](http://www.wildlife.ca.gov/MPAs/Network)

California Marine Life Protection Act Marine Protected Areas Master Plan:

[www.wildlife.ca.gov/Conservation/Marine/MPAs/Master-Plan](http://www.wildlife.ca.gov/Conservation/Marine/MPAs/Master-Plan)

Marine Life Protection Act Summary and Network Goals:

[www.wildlife.ca.gov/MPAs/Network-Goals](http://www.wildlife.ca.gov/MPAs/Network-Goals)



**For more Information, visit:**

[www.wildlife.ca.gov/MPAs](http://www.wildlife.ca.gov/MPAs)

**Email:**

[AskMPA@wildlife.ca.gov](mailto:AskMPA@wildlife.ca.gov)

**MPA Mobile:**



Report poaching and polluting,

Call CalTIP

**1-888-334-2258**

The information in this document does not replace the official regulatory language found in the California Code of Regulations Title 14, Section 632 [www.wildlife.ca.gov/Conservation/Marine/MPAs/Network/Title-14-Section-632](http://www.wildlife.ca.gov/Conservation/Marine/MPAs/Network/Title-14-Section-632)