



The Response Group
Emergency Response | Pre-Planning & Support

Field Data Collection

IAP Software - Developed for Responders by Responders

Your ability to respond is our shared responsibility™

Needs

- Quickly capture data in the field
- Increase time to send field data into Command Post
- Two- way communication between field and ICP

Functionality

- User can send updates using forms, maps or both
- Ability to collect data offline
- Cross platform and cross browser support

Data Quality

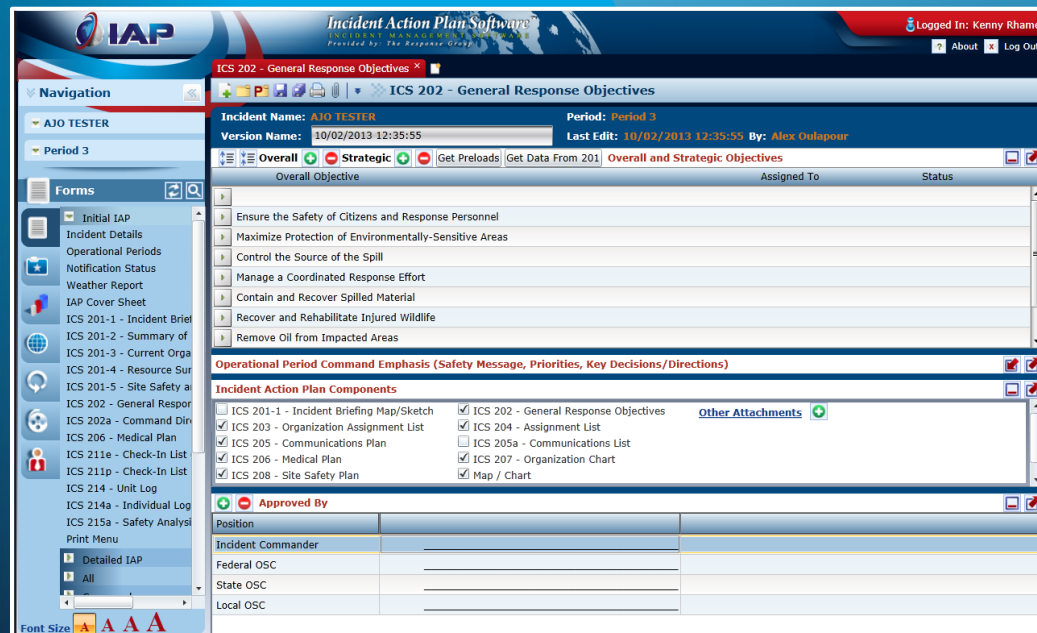
- QA/QC data before dissemination or display
- Approval process for displaying data

Interoperability

- Ability to share data collected as services

Key Features :

- Mapping component with direct interface to Common Operating Picture
- Crisis Management Module
- Mobile device functionality with offline capability
- New automated Situation Status Display
- Operational Situation Awareness
- Create Incident Wizard

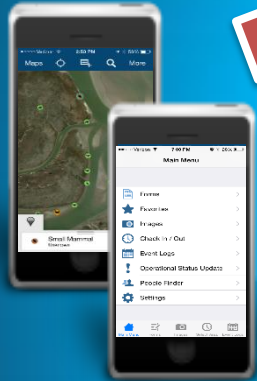


Common Operating Picture

The Response Group
Emergency Response | Pre-Planning & Support

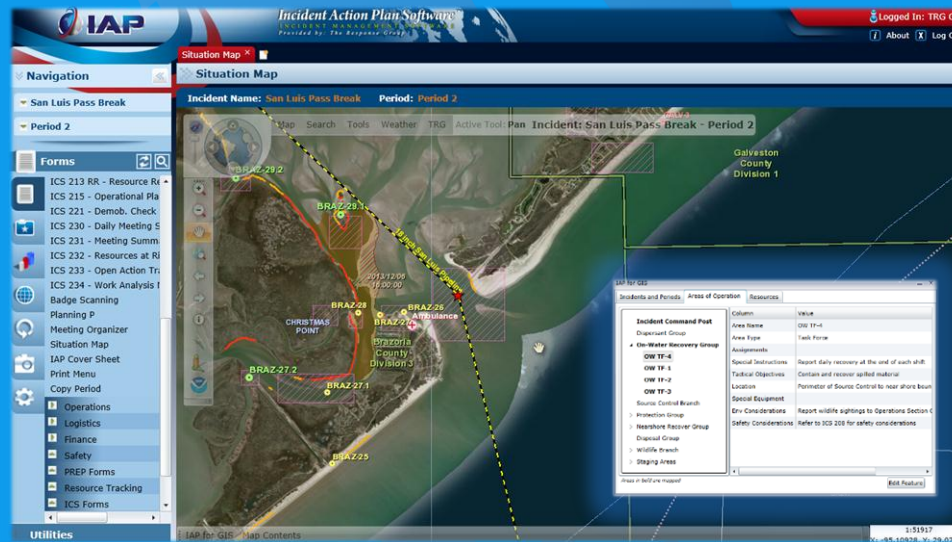
Mobile Data Collection

- Displays real-time updates
- Data collection from the field



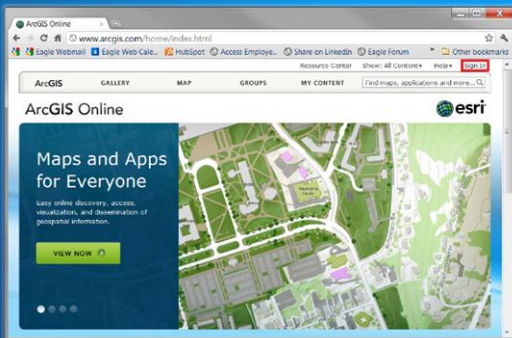
GIS Specialists

- Create and Edit data from Command Post
- QA/QC field data collected



Integration

- Fully integrated with other TRG products including IAP



Compatibility

- ArcGIS Online
- Uses Standard Web Map Service (WMS)

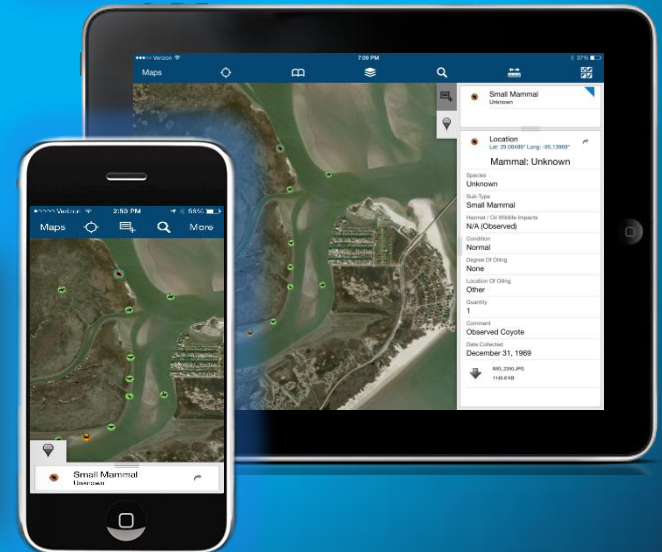
Mobile IAP

- Incident Creation Wizard (ICS 201)
- Offline Capability
- Badging/Check-in
- Event / Individual Logs
- Images/Picture Upload
- Operational Status Update
- Map Viewer
- ICS Forms Viewer



TRG Recon

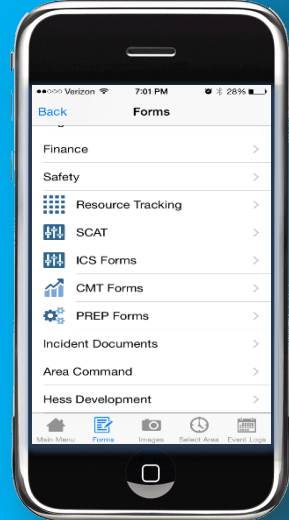
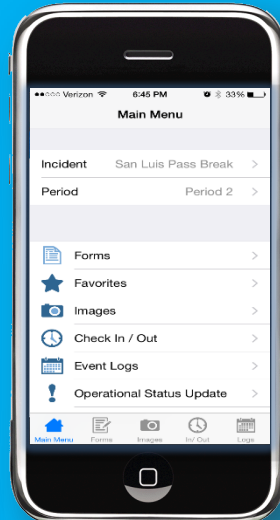
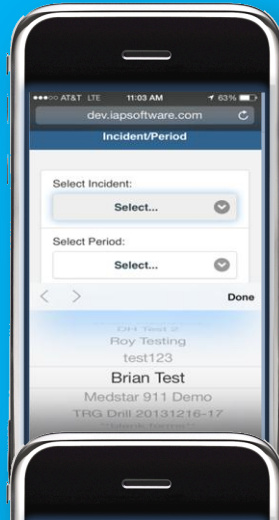
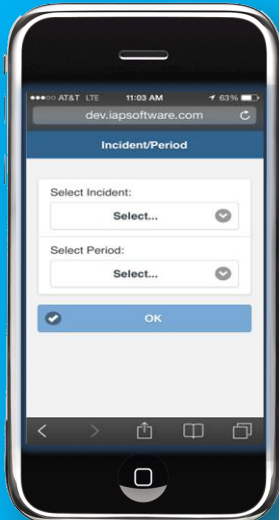
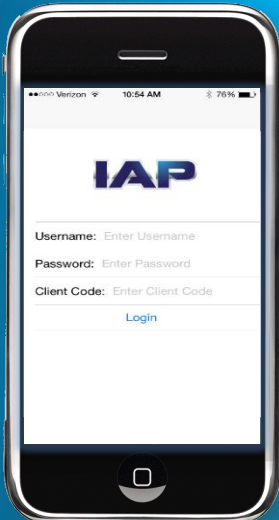
- Operational Updates
- SCAT
- Wildlife
- Claims
- Safety
- Field Observations





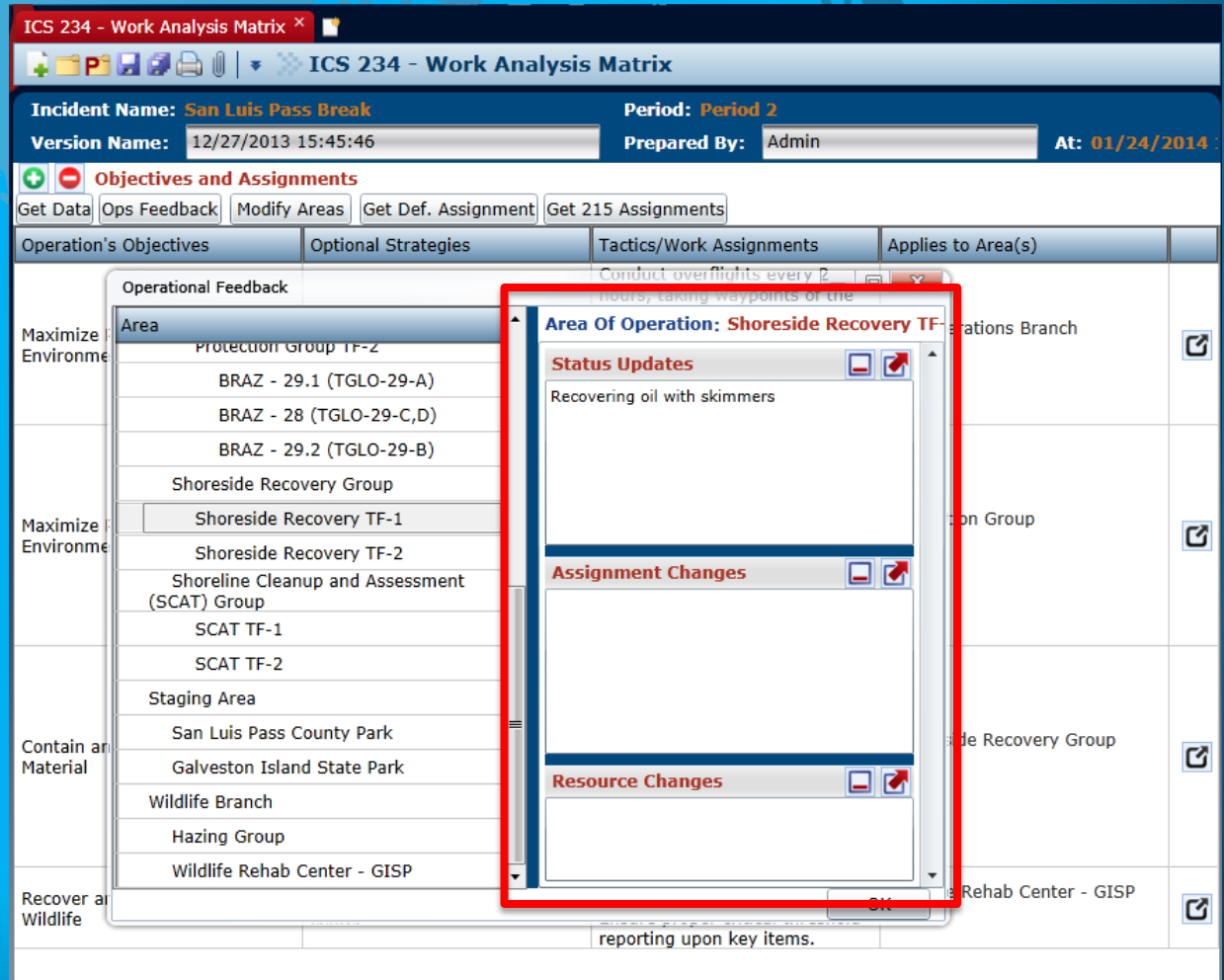
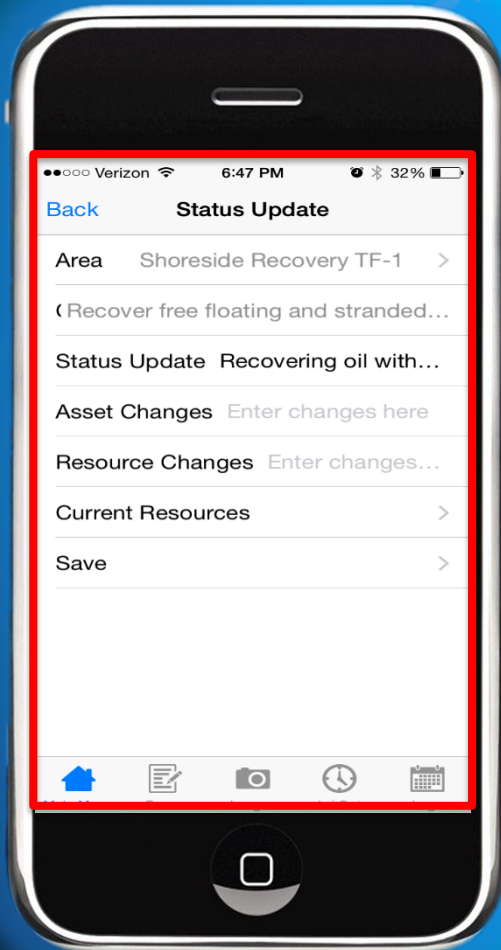
Mobile IAP for Version 5.0

- Ability to use Mobile devices to view and provide real-time updates



Operational Status updates from field

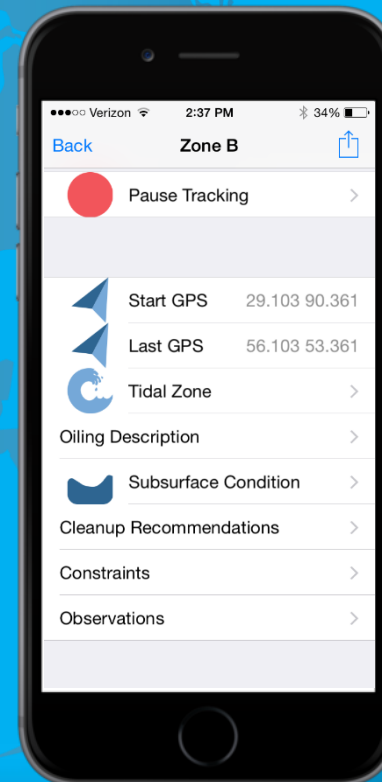
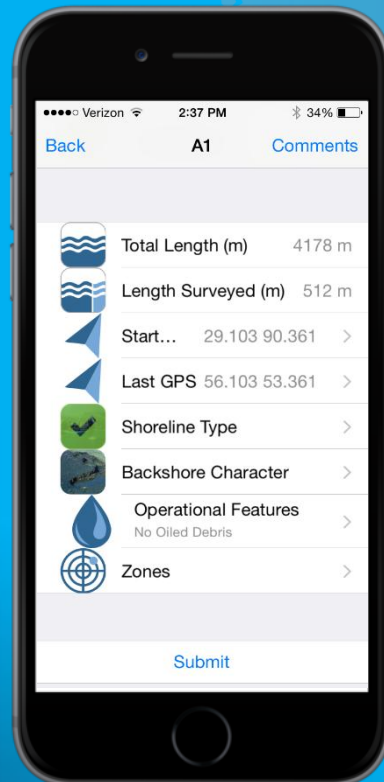
- Operational Field status updates (assignments & resources) feed directly into the Command Post from the field via ICS 234 & ICS 215



- Mobile app for data collection in the field
- Offline capability with cached maps
- Real-time updates available to view



- Create NOAA Shoreline Oiling Summary forms in the field using mobile devices
- Create SCAT Segments tracing footsteps using “breadcrumbs”
- Direct integration with IAP Software
 - NOAA Shoreline Oiling Summary (SOS) Form
 - Common Operating Picture (COP)



IAP SCAT Forms

- Shoreline Oiling Summary (SOS)
- Shoreline Treatment Recommendation (STR)
- Manage personnel for SCAT Teams
- SCAT Summary form to easily manage data

Incident Name: San Luis Pass Break
Version Name: San Luis Pass - 1
Prepared By: Lindsey, David
At: 12/03/2014 10:55:27 GMT -6:00

General Information

Segment ID	San Luis Pass - 1 (Pre)	Survey Start	12/02/2014 10:20:00 AM	Tide Height	-0.5 mtr
Operations Division	SCAT TF-1	Survey End	12/02/2014 11:20:00 AM	Tide State	Rising
Survey By	Foot	Weather	Clouds	Air Temp	45 F

Survey Team (Alpha)

Name	Organization	Contact Number
Abel, Boyd	The Response Group	(832) 334-9211
Adams, Hannah	The Response Group	(210) 416-1344
Archer, Cole	The Response Group	(308) 440-4303

Segment

Total Segment Length	800 mtr	Length Surveyed	800 mtr	Maximum Interstitial Width	8 mtr
Start GPS	-95.12308909 29.089542936				
End GPS	-95.119413174 29.089542936				

Shoreline Type

Primary	Secondary	Oiled	Shoreline Type
X			Fine-grained Sand Beaches

Coastal/Backshore Character

Primary	Secondary	Type	Note
X		River Inlet/Channel	
	X	Beach	

Operational Features

Oiled Debris?	No	Type		Debris Amount	
Direct backshore access?	No	Access restrictions	Use ATVs to access sandy areas		
Alongshore access from next segment?	No	Suitable Backshore Staging?	No		

Surface Oiling Conditions

Zone ID	Oil Cover					Oil Character													
	LI	MI	UI	SU	HT	%	PG	CV	CT	ST	FL	FR	MS	TB	TC	SR	AP	No	
A					0	0													X

Observations

heavy bands of fresh oil and mucus in middle and upper foreshore zones.

Constraints

Use ATVs to access fine sandy areas.

Cleanup Recommendations: Ecological/Recreational/Cultural Issues/Wildlife Obs.

Recommend mechanical and manual removal of oil.
Piping plover and other shorebirds may use this area for nesting or foraging.
Can be a high traffic area for fishermen.

SCAT Shoreline Oiling Summary
Printed: 12/03/2014 10:55:27 GMT -6:00
Last Update by Lindsey, David At: 12/03/2014 10:55:27 GMT -6:00
Page 1 of 1
© TRG

Situation Map

Incident Name: San Luis Pass Break
Period: Period 2

Map Search Tools Weather TRG Video Feeds Active Tool: Pan

Protection Group TF-2

CHRIS ELLIS POINT

San Luis Pass

Blowdown Alley

West Bay

1:12500
X: -95.13882, Y: 29.08885

Tactical Response Plans

- Field Data Collector to capture field data and pictures
- Automates process to create Site Sheets and ICS 204s
- Integrated with IAP database and Common Operating Picture



Tactical Response Plan Division F – Site A25 Protection Site High River

Site Information **Site Picture**

Site Name: Smith Creek
 Strategic Objective: Minimize impact to shoreline and creek to extent possible.
 Latitude: 43° 33' 00" N
 Longitude: 64° 15' 18" W
 Species: Catfish
 Population Density: Low
 Land Use: Recreational/Recreational Use from Pipelines: N/A
 Line No.: N/A
 Vetus Locations:
 Upstream: N/A Downstream: N/A
 Existing Facilities: Boat Ramp at Marina Park, Parking

Access Information

Site Access: Boat
 Road Type: N/A
 Road Surface Type: N/A
 Road Condition: N/A
 Access Type: Public
 Bridge Height: N/A

Waterway Information

Type of Waterway: River
 Waterway Name: High River
 Average Current Speed: 1 mph
 Waterway Width: Low Water: ~ 15'
 High Water: ~ 30'
 Tidally Influenced: Yes

Shoreline Type: Fine sand beaches, coarse sand beaches, exposed tidal flats, marshes.

Bank Slope: Slight
Bank Height: ~ 1.5'
Existing Facilities: Boat Ramp at Marina Park, Parking

Response Information **Contact Information**

Site Priority: B
 Deployment Strategy: Protection
 Low Water: Booming High Water: Booming
 Boom Required: 600'
 Recovery Method: N/A
 Tank Truck Access: Yes
 Pump/Truck Mounted: Yes
 Nearest Staging Area: Refinery (BWRF-2)
 Nearest Boat Ramp & Ops: Marina Park, At Site

Agency Name: Contact Info
 Agency Name: Contact Info
 Stakeholder Name: Contact Info
 Organization Name: Contact Info
 Organization Name: Contact Info
 Communications Availability: Adequate Cellular Service

Site Description **Considerations**

Access Location Description: Pocket marsh about 1 1/2 miles long by 1/2 mile wide surrounded by industrial facilities.
 Hazards: Wildlife, Boat Traffic.
 Obstructions/Limitations: Grass and dirt shoreline. Slight slope to river. Accessible from left descending bank.
 Nearby Sensitivity: WILDLIFE: Nesting waterfowl, including mallard, black ducks, swagwrens, ring neck gulls, noddys ducks, coot, C. greys, and mute swans; hooded, red breasted, and common mergansers (shell-neck); canvasbacks, scup, parakeets, buffbreasted, open water, winter; pintails and egrets; blue crabs, killifish, weakfish, bluefish, winter flounder, HABITAT: Nesting sites for numerous waterfowl species.
 Alternate Strategies: During low water periods, underflow dam construction may be used for protection and recovery of spilled material in the creek.

Photo 1: Looking S and upstream with the access and recovery area visible in the foreground.

The Response Group Copyright © 2014 TRG The Response Group, LLC F-A25

Tactical Response Plan Division F – Site A25 Protection Site High River

Site Pictures **Strategy Map**

Photo 1: Looking S and upstream with the access and recovery area visible in the foreground.
 Photo 2: Near the mouth of Smith Creek and
 Photo 3: Near the mouth of Smith Creek and

Assignments

Personnel and response personnel of hard boom to protect the opening of High River. Seawren Marina Park as a staging area as necessary, as the course of the response. Track out of resources.

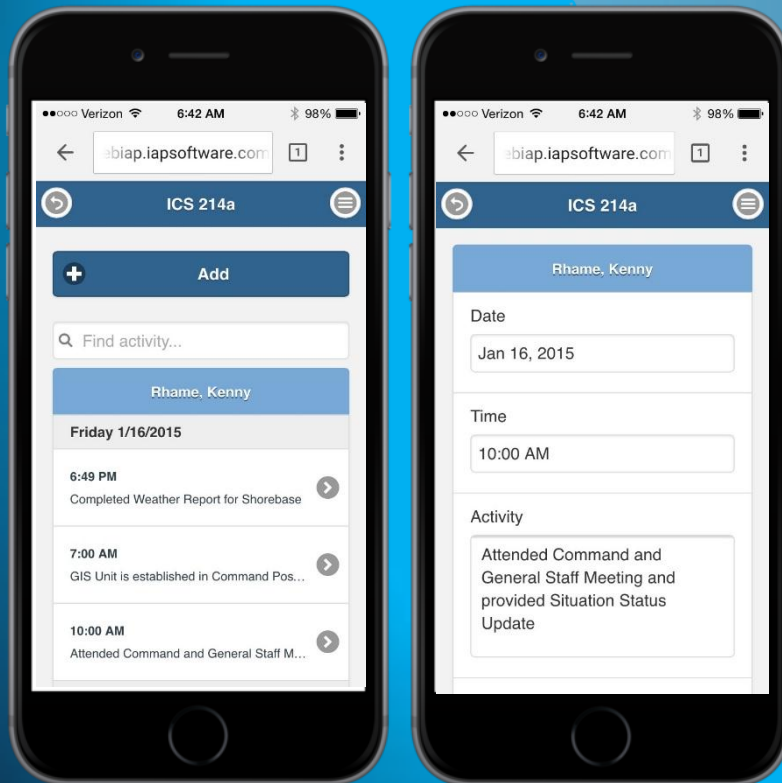
Resources Required

Description	Qty.	Size	Type	Description	Qty.	Size
Anchor Stakes	50	each	Boom Accessories	Anchor Stakes	50	each
Boat Operator	1	each	Mangrove Operator	Boat Operator	1	each
Fast Tank	1	each	Storage: Liquid	Fast Tank	1	each
Frack Tank	1	each	Storage: Liquid	Frack Tank	1	each
Hard Boom	850	feet	Boom	Hard Boom	850	feet
Jet Boat	1	each	Yessel	Jet Boat	1	each
Portable Skimmer	2	each	Skimmer	Portable Skimmer	2	each

The Response Group Copyright © 2014 TRG The Response Group, LLC F-A25

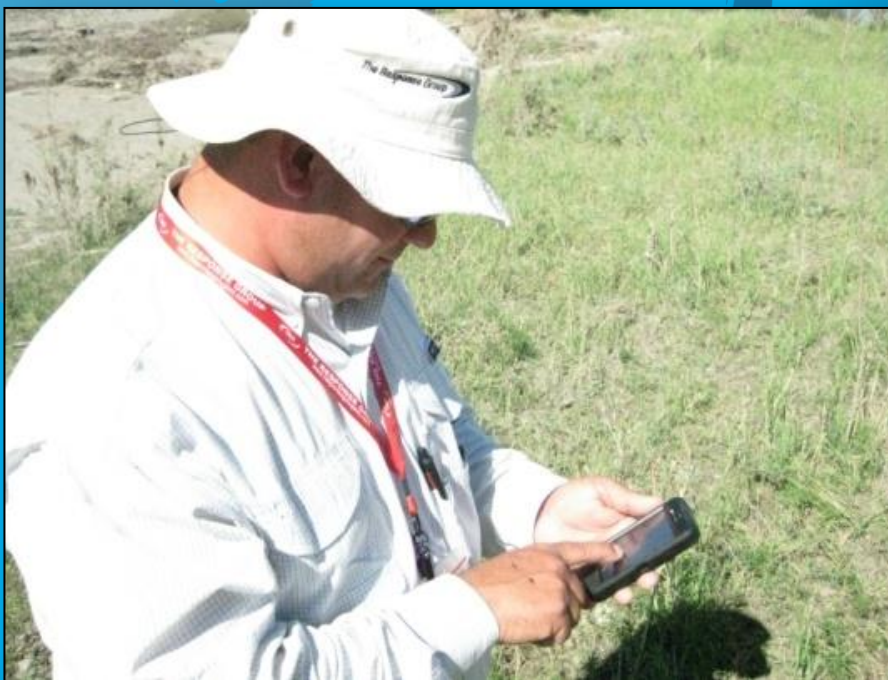
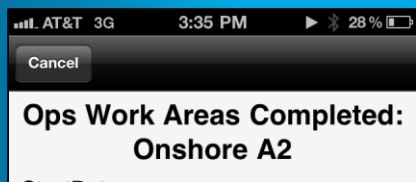
Indonesia Exercise

- Access approved forms from mobile devices
- Complete ICS 214a Individual Logs
- COP Viewer from mobile devices



Yellowstone River Response

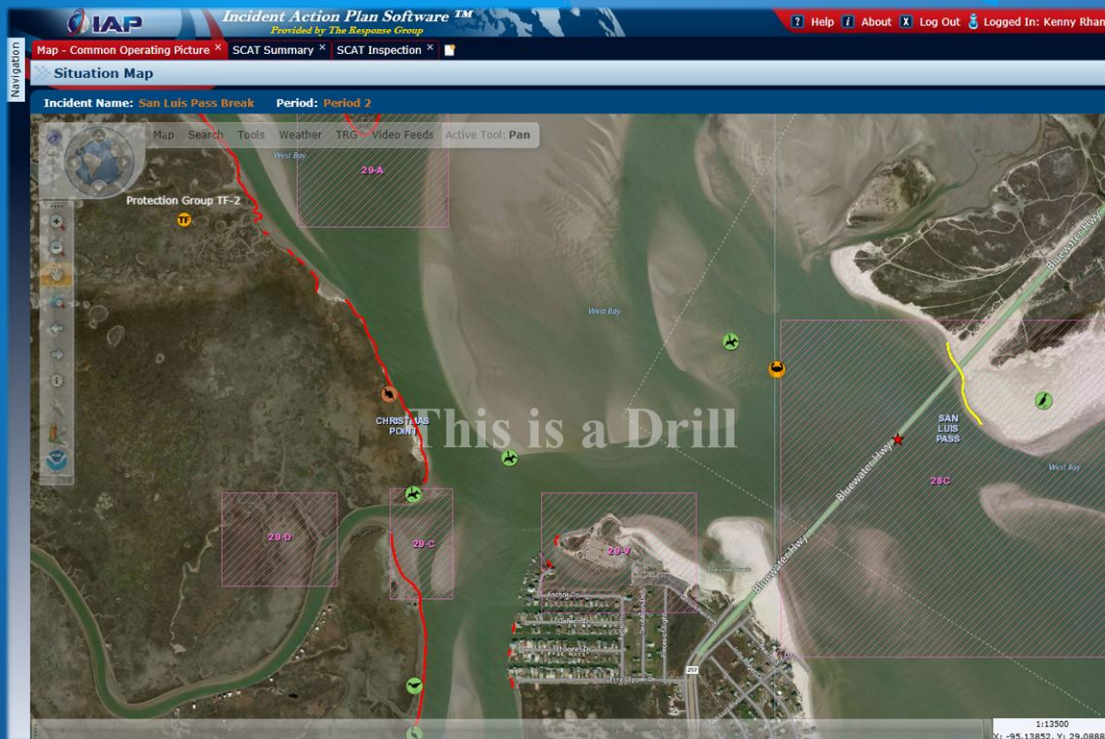
- Operational status updates from the field using mobile devices
- Remote mapping support from staging areas using COP
- Processing claims data from field with mobile devices



Examples

Galveston Exercise

- Collecting SCAT data from the field
- Collecting Wildlife Observations from the field
- Near real-time updates to the COP



The Response Group
Emergency Response | Pre-Planning & Support



IAP

Questions/Comments?

IAP Software - Developed for Responders by Responders

Your ability to respond is our shared responsibility™