

### What is a California marine protected area (or "MPA")?

An MPA is a type of managed area primarily set aside to protect or conserve marine life and habitats in marine or estuarine waters. California's MPA Network consists of 124 areas with varying levels of protection, and 14 special closures, all designed to help safeguard the state's marine ecosystems. Fishing and collecting are banned at marine reserves such as Point Conception State Marine Reserve, providing this MPA with the highest level of protection.

One goal for California's MPAs was to strategically place them near each other to form an interconnected network that would help to preserve the flow of life between marine ecosystems. Within that network each MPA has unique goals and regulations, and non-consumptive activities, permitted scientific research, monitoring, and educational pursuits may be allowed.

### Why was this location chosen for a state marine reserve?

One of the goals for [Point Conception State Marine Reserve](#) is to protect the fish and invertebrates at this location, where warm water currents from the tropics and cold water currents from Alaska converge. This unique reserve protects deepwater rocky reefs and pinnacles, and natural petroleum deposits that form sediment-covered tar mounds covering nearly 1½ square miles of the seafloor. Brittle stars and a variety of rays, soles, and other flatfish inhabit the soft, sandy seafloor. Kelp forests and deep rocky reefs, often surrounded by sand, provide shelter and hunting grounds for the reserve's copper rockfish, wolf-eels, longspined combfishes, red rock crabs, Kellet's whelks, and gorgonian soft corals. The reserve's extensive surfgrass beds support many species of invertebrates and young fish, while its sandy beaches are used as pupping and haulout areas by harbor seals and other seals and sea lions.

Placing a state marine reserve here provides very high levels of protection for local marine species and the habitats they use.



Report poachers and polluters  
Call CalTIP: 1 (888) 334-2258

or text 847411 - begin message with "Caltip"  
followed by the details.



### Quick Facts: Point Conception State Marine Reserve

- **MPA size:** 22.52 square miles
- **Shoreline span:** 3.7 miles
- **Depth range:** 0 to 489 feet
- **Habitat composition:**  
Rock: 1.70 square miles  
Sand/mud: 20.85 square miles



Non-Consumptive Activities

No Fishing

No Collecting

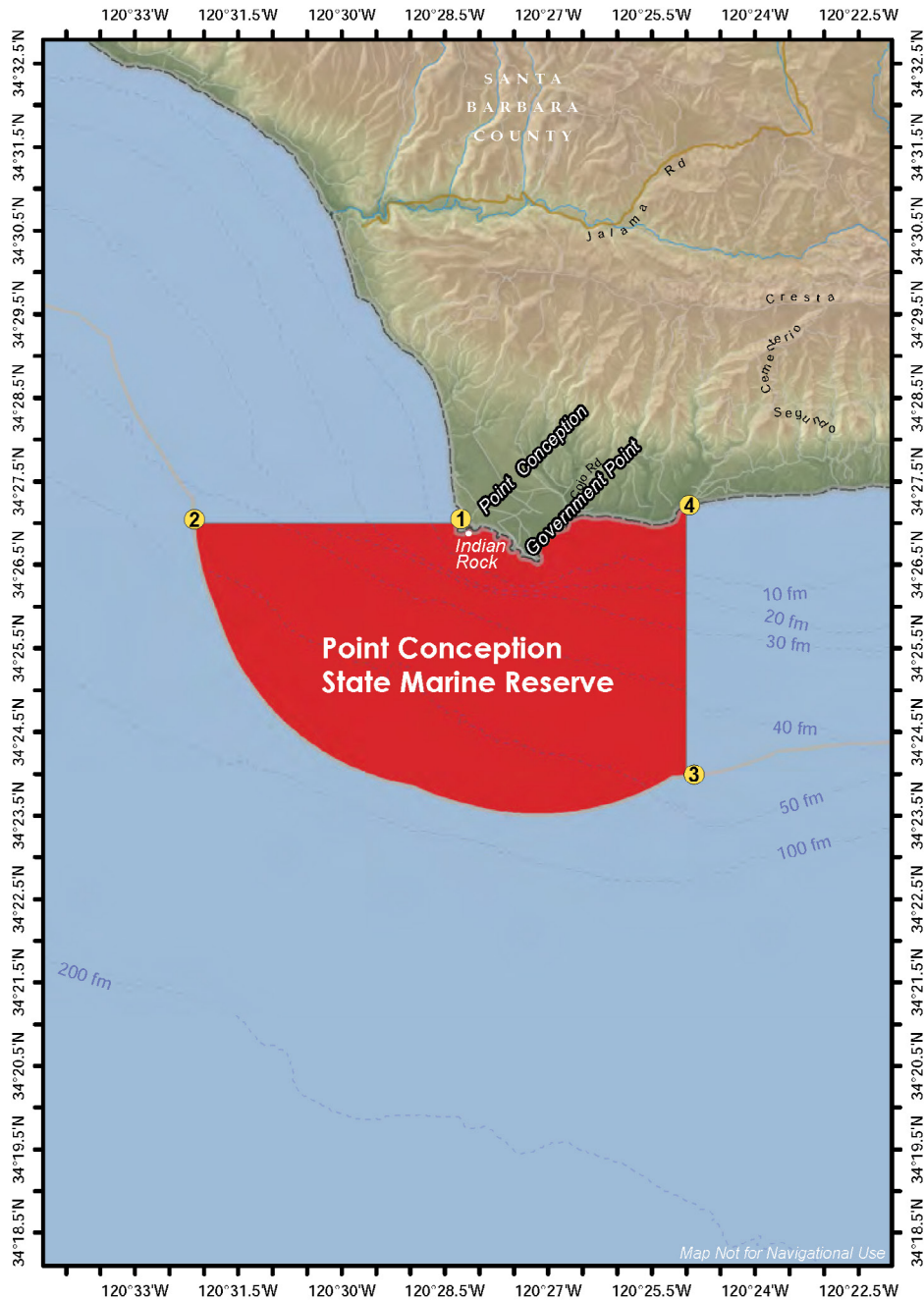
### Further Information:

- MPA Website: [www.wildlife.ca.gov/MPAs](http://www.wildlife.ca.gov/MPAs)
- MPA and Sportfishing Interactive Map: [www.wildlife.ca.gov/OceanSportfishMap](http://www.wildlife.ca.gov/OceanSportfishMap)
- Email: [AskMarine@wildlife.ca.gov](mailto:AskMarine@wildlife.ca.gov)

Photos - Upper: Point Conception, photo © Robert Schwemmer, NOAA Photo Library CC BY 2.0  
Lower right: Longspined combfish at Point Conception State Marine Reserve, CDFW/MARE photo.  
Lower left: Pink gorgonian at Point Conception State Marine Reserve, CDFW/MARE photo.

# Point Conception State Marine Reserve

Southern California - Santa Barbara County



## Point Conception State Marine Reserve Boundaries and Regulations from California Code of Regulations Title 14, Section 632

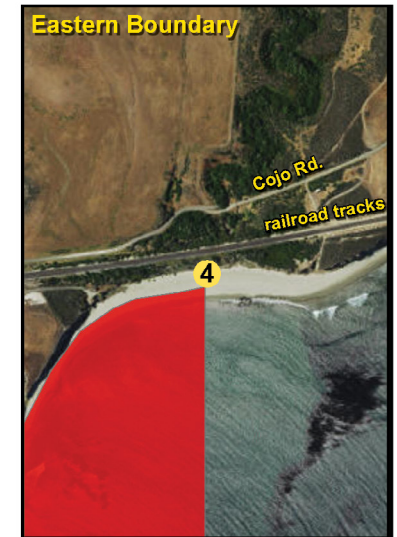
### Boundary:

This area is bounded by the mean high tide line and straight lines connecting the following points in the order listed except where noted:

- 34° 27.000' N. lat. 120° 28.280' W. long. ①;
- 34° 27.000' N. lat. 120° 32.151' W. long. ②; thence south-eastward along the three nautical mile offshore boundary to
- 34° 23.961' N. lat. 120° 25.000' W. long. ③; and
- 34° 27.211' N. lat. 120° 25.000' W. long. ④

### Permitted/Prohibited Uses:

It is unlawful to injure, damage, take, or possess any living, geological, or cultural marine resource.



Take may be authorized for research, restoration, and monitoring purposes under a scientific collecting permit. See California Code of Regulations Title 14, Section 632(a).

The information in this document does not replace the official regulatory language found in the California Code of Regulations Title 14, Section 632. View these regulations online at [www.wildlife.ca.gov/Conservation/Marine/MPAs/Network](http://www.wildlife.ca.gov/Conservation/Marine/MPAs/Network).